



Removing resistance?

An innovative method for nuanced, large-scale citizen participation in the mobility transition

📍 Wednesday, 26 November 2025

🕒 14:30 - 16:00

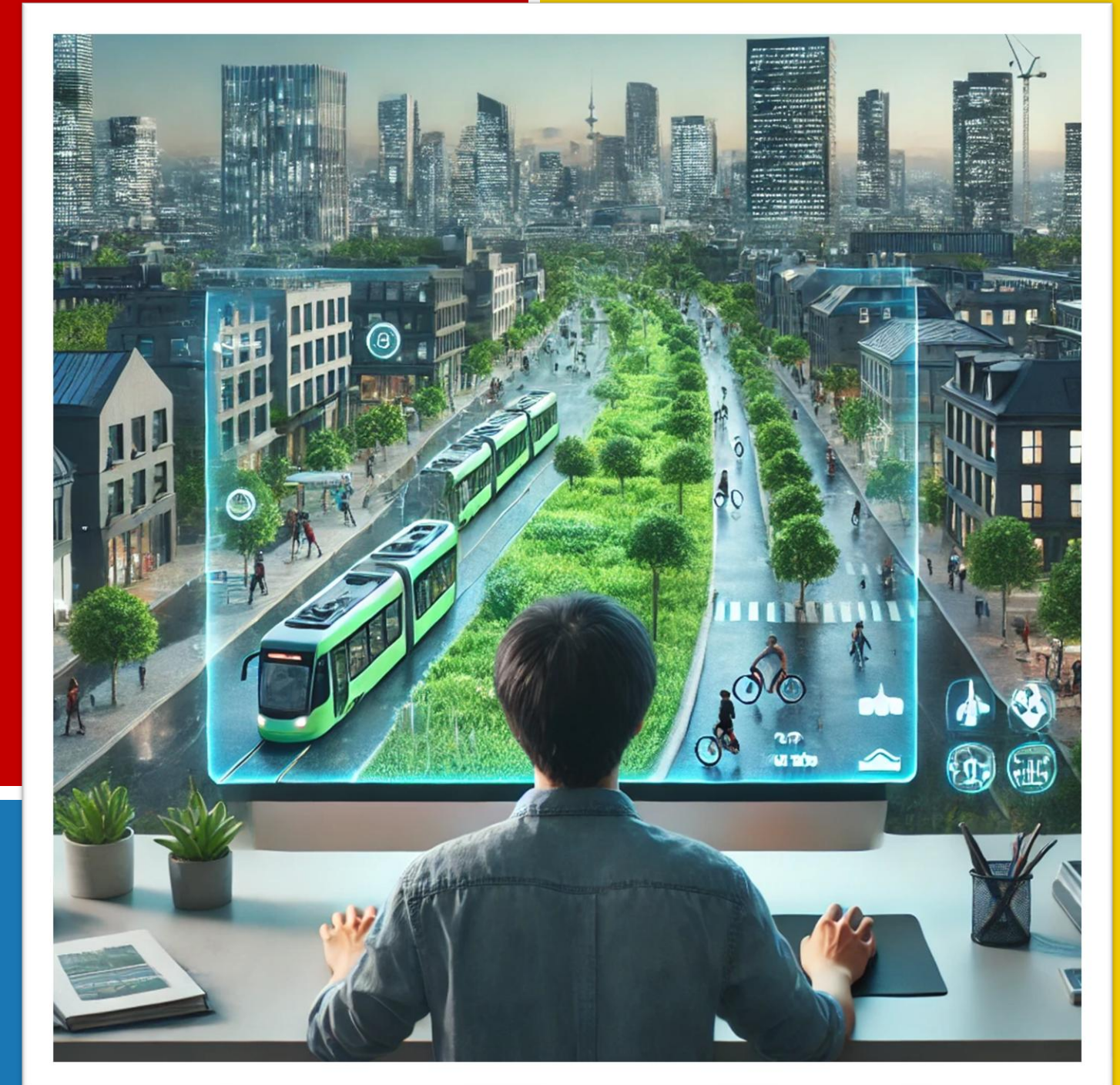
SESSION 2D

Confronting the Climate Crisis

SPEAKERS

Martijn de Vries, TU Delft / Populytics






m.o.devries@tudelft.nl / martijn@populytics.nl

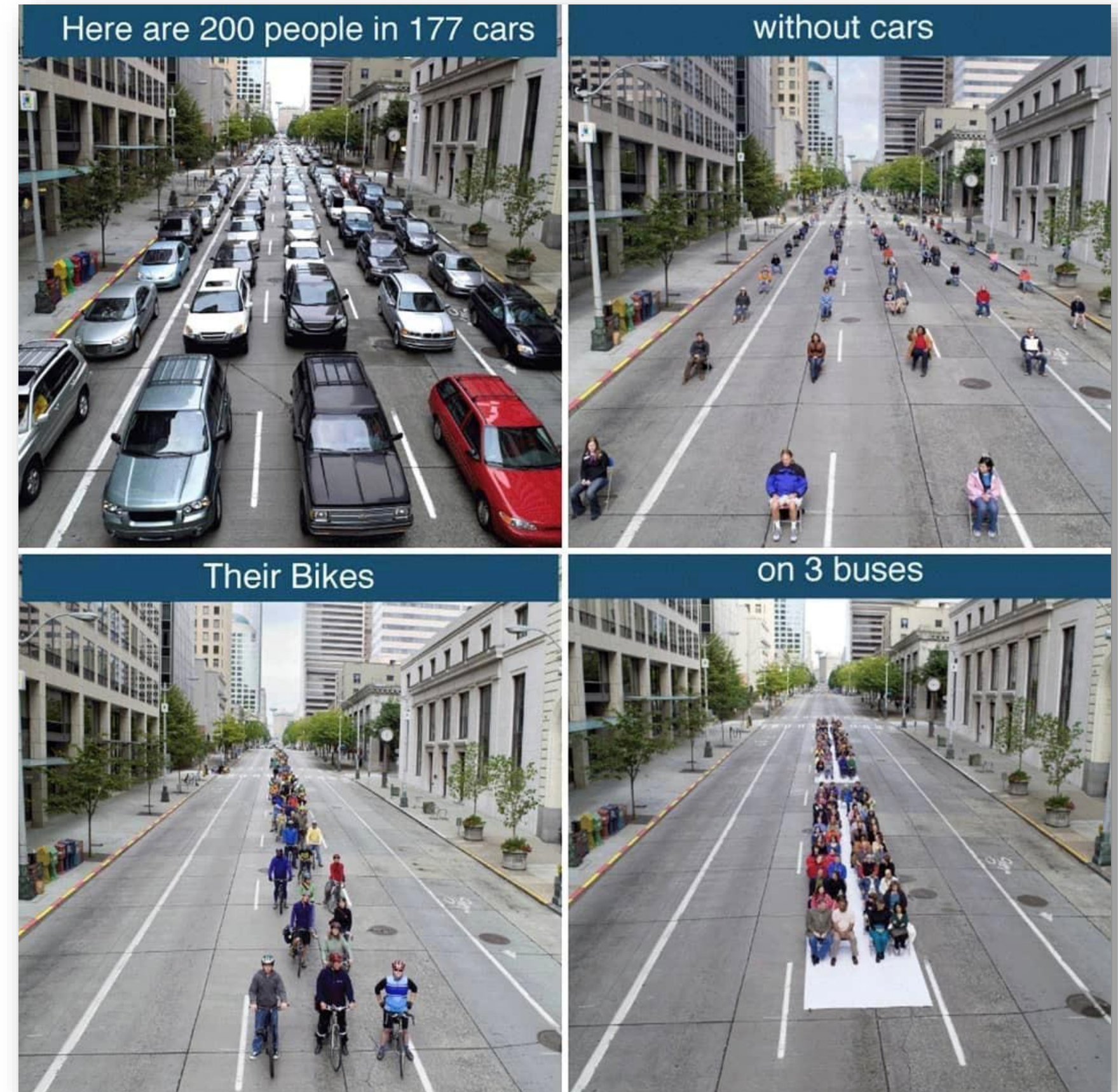


Cities face a difficult question

How do we allocate scarce public space?

Space is scarce and many things compete for it:

-  Growing housing demands
-  Public transport for growing #residents
-  Energy transition
-  Biodiversity & climate adaptation
-  Safe playgrounds & pavements



Source: International Sustainability Institute

A widely shared solution

Among experts

The compact / 15-minute city model

A nice idea for new neighborhoods

But a big challenge in existing neighborhoods

- Requires **transformative change** in public spaces, away from private cars



Source: Merwede

Transformation challenge

How to involve residents on a large scale?

If residents feel their values and concerns are not heard, this creates resistance

“**Overflow**”¹ = citizens start looking for alternative ways to voice values and concerns

In **energetic** and **mediatized**² societies,

- This often leads to **protests** and (radical) **contestation** of the 15-minute city model



Source: Gemeente.nu

A common method

Referenda are often used

Often lead to **majority rejection** of transformative proposals*

- Recently in *Amersfoort, Haarlem, Amsterdam, Katwijk*

Could mean there is no public support for transformative change

But perhaps, this is an **incorrect measure** of public support?



REFERENDUM
over betaald parkeren
voor alle bewoners in héél Haarlem

STEM OOK!



scan mij en sluit je aan bij
Haarlem Betaald Parkeren op Facebook
voor meer informatie over het referendum
of kijk op www.parkeerreferendum.nl

**op
6 MAART
2024**

**Bij een opkomst van
min. 30% beslis jij
mee over JOUW stad!**

Ben jij 16 jaar of ouder.... dan is het nú of nooit!

An alternative method

Participatory Value Evaluation

An innovative method for **large-scale** and **nuanced** citizen participation, developed at TU Delft*

The essence: residents virtually 'step into the shoes' of a policymaker and **experience a dilemma.**

Recently **tested** for transformative urban mobility policy proposals in Gouda, Haarlem & Amsterdam.



Case study in Haarlem (NL) *

Referendum conducted within a short timespan (Q2 2024)



Gemeente
Haarlem

Complex policy package

2 demand-oriented measures

- *Expand paid parking from city center to 11 neighborhoods*
- *Limited amount of parking permits per neighborhoods*

Many stimulating measures

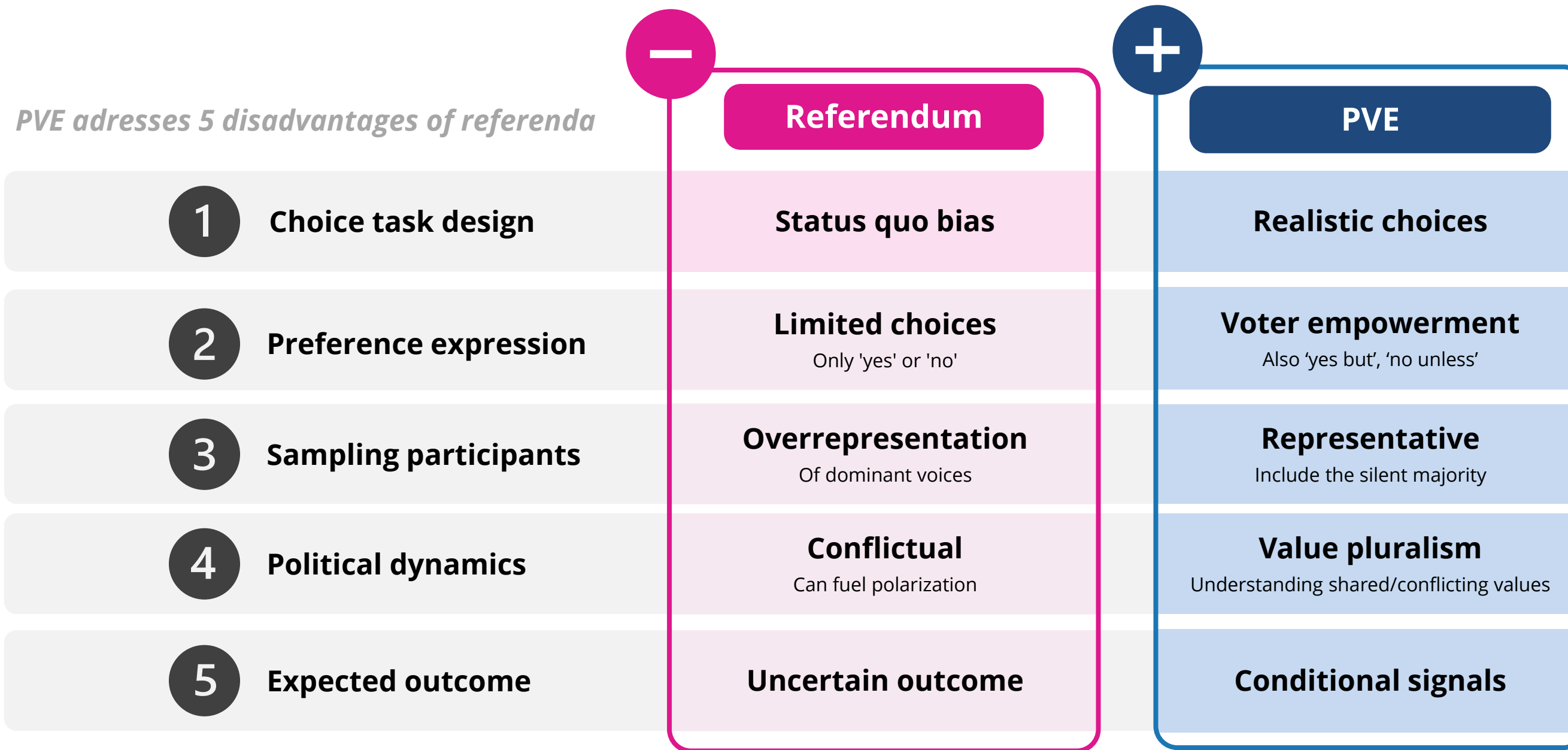
- *E.g. stimulating shared mobility*
- *E.g. effective use of parking spaces*



Source: Aerovista Luchtfotografie

Comparing voting instruments

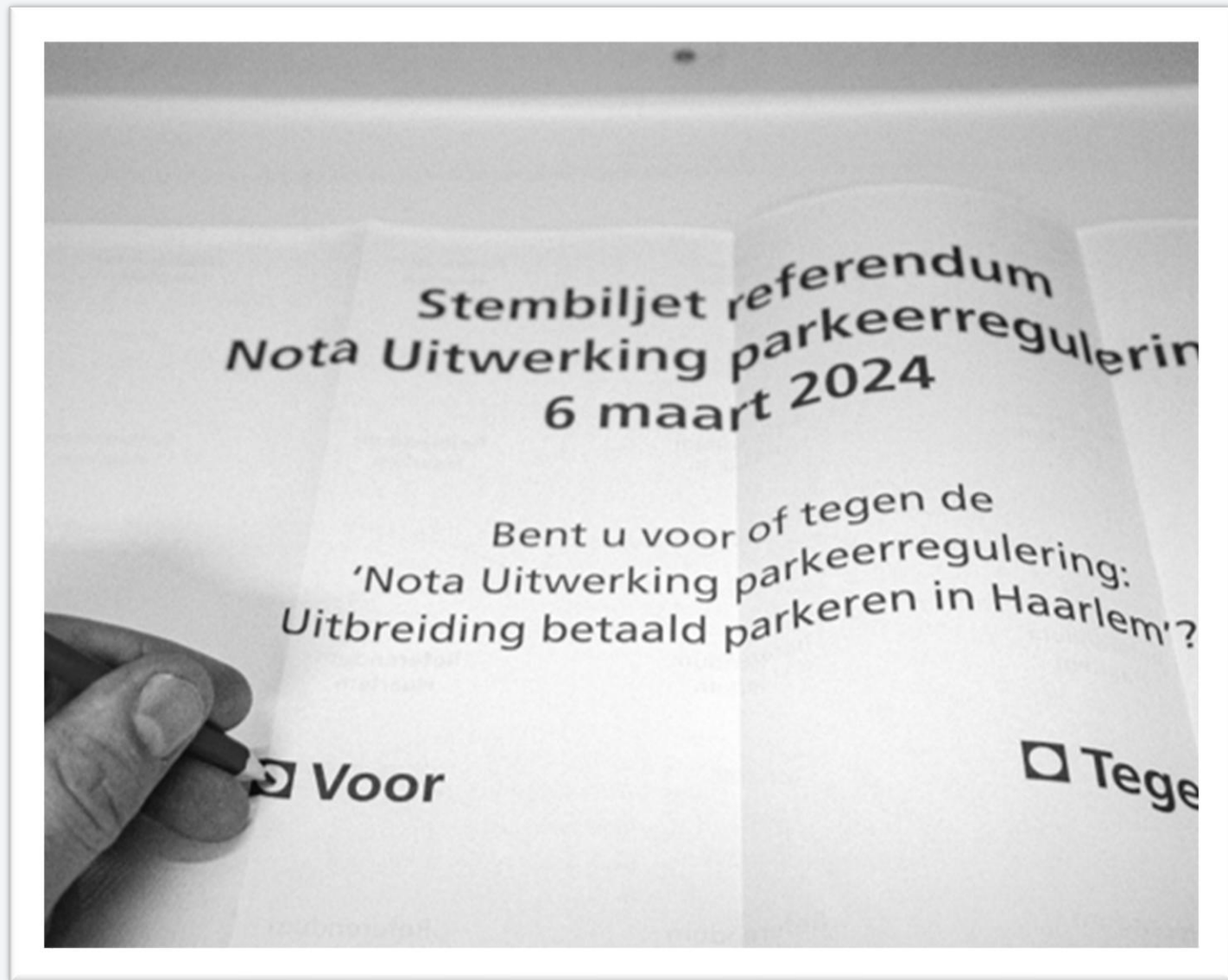
In the context of transformative urban mobility policies*



1 Choice task design

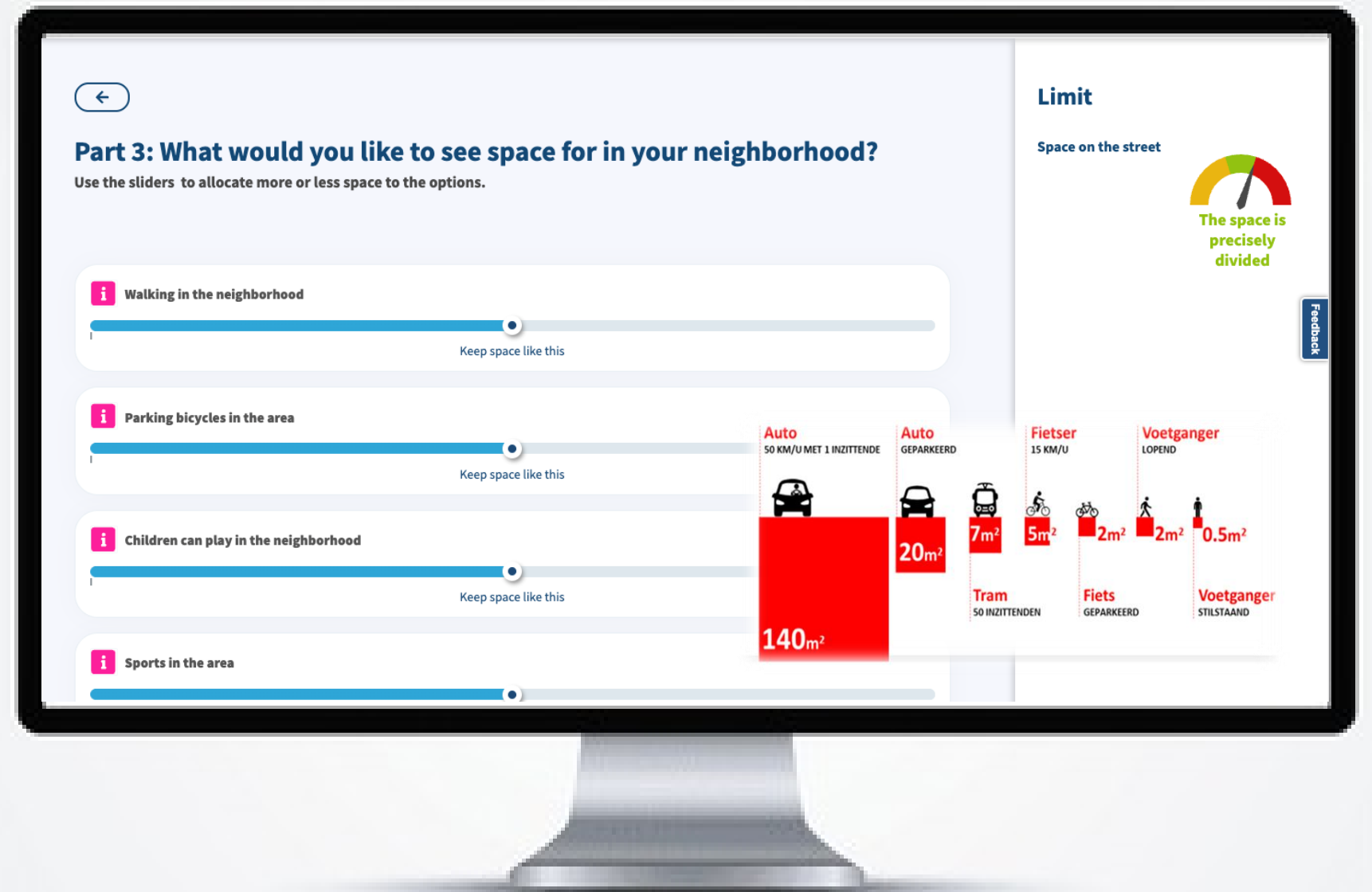
Referendum

Susceptible to status quo bias



PVE

Consider constraints such as limited public space



2 Preference expression

Simplicity vs complexity

Referendum

I think referendums are pointless. I'd like to express my opinion, but not as bluntly as "for" or "against"

Quote participant



Voter experience

PVE

It takes quite a bit of time, especially typing explanations. [The PVE] was tricky, but it provides a lot of insight

Quote participant

3 Sampling participants

Referendum

Overrepresentation of dominant voices

37% voter turnout

Underrepresentation of

Young people (< 35 years old)
People without a car

PVE

Representative sampling

13% voter turnout

10.000+ participants

Representative through
stratified sampling

3 Sampling participants

Referendum

Overrepresentation of dominant voices

Reasons for not voting

Qualitative analysis of 300 participants

16% - Referendum was not relevant for me (e.g. because I do not own a car).

11% - Limited ability to express my preferences

9% - Strategic, prevent threshold from being met

"I didn't feel addressed. Thought it was about parking and I do not have a car"

"I was hoping the turnout quota would not be met. I'm a big proponent of regulation, but the "counter brigade" was very active."

PVE

Representative sampling

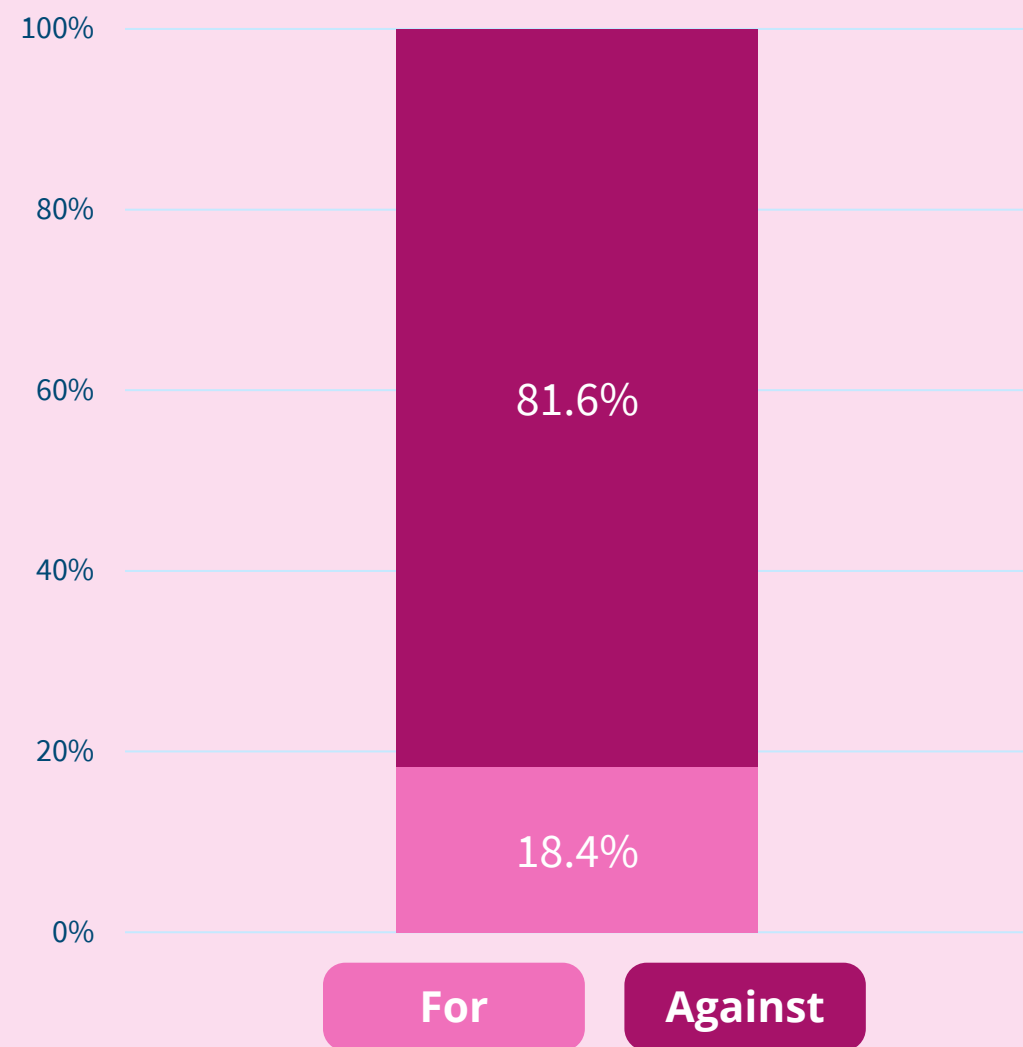
4

Political dynamics

Different results & debates

Referendum

Guaranteed majority outcome



PVE

Detailed insight into priorities of different groups

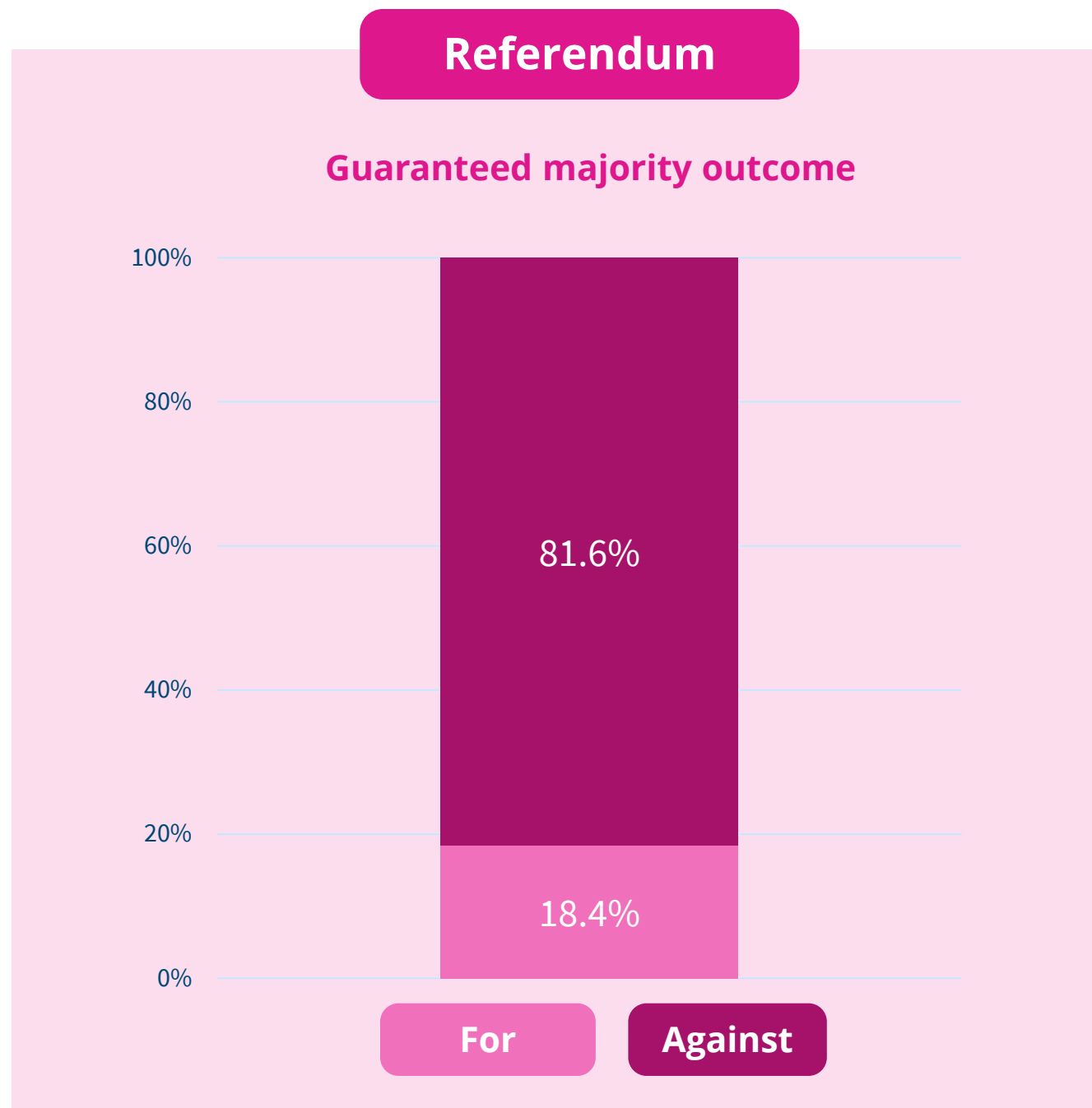
	1 (40%)	2 (27%)	3 (23%)	4 (10%)	Average
Accessibility of key facilities by bike or on foot	12,9	12,5	16,9	12,5	13,4
More green spaces	13,1	12,0	19,5	10,6	13,3
Car parking	7,9	16,6	0,0	27,6	11,9
Safety	10,8	8,9	12,2	10,7	10,3
Playing	11,2	8,7	12,8	6,6	10,0
Accessibility for disabled people	9,7	7,1	10,0	7,7	8,8
Driving cars	6,6	11,8	0,0	17,4	8,5
Social meeting spaces	9,7	8,7	10,5	0,0	8,4
Climate adaptation	9,0	6,8	9,5	7,4	8,2
Sport locations	9,0	7,4	8,7	0,0	7,6

No priority Low priority Med priority High priority Max priority

4

Political dynamics

Different results & debates



PVE

Detailed insight into priorities of different groups

Group	Percentage	Priority
Moderate group	40%	Open to incremental changes
Principled reformers	23%	"We must do everything we can to make cities suitable for plants, birds, etc."
Pragmatic commuters	27%	Open to change, under conditions
Car prioritizers	10%	"I make sure I'm home before 4 pm so I can park."

4

Political dynamic

Simplicity vs complexity

Referendum

"You don't know exactly which parts of the policy people voted against."

Quote Alderman



Political contest

PVE

We believe the questions were very biased. If you say you're in favor of more green spaces, the municipality thinks you're against cars, which is nonsense.

Quote action group

5

Expected outcome

Simplicity vs complexity

Referendum

Unclear what happens after rejection

Withdrawing is canceling, and that's not the same as amending. Don't play with words!

Quote opposition party

This breeds polarization

"Politicians and residents have grown apart in recent weeks, so we need to come together again to find a solution"

Quote alderman

PVE

5 Expected outcome

Simplicity vs complexity

Referendum

PVE

Detailed insights contribute to consensus building

Input for opinion note 'parking policy dilemmas', discussed in the municipal council

Policymaker

"The parking debate softened after consultation of residents"

Quote news reporter

Another case study *

✘ Gemeente
✘ Amsterdam
✘

The Amsterdam alderman referred to the PVE results to **legitimize a stringent policy**: 30km/h in the entire city

The message that this contributes to **road safety** was easier to convey since most residents also prioritized this public value



Source: NRC

Another case study *

“ Policy choices for specific parking permits at the neighborhood level were based on and legitimized by referring to the preferences of PVE participants.”

Quote policymaker



Source: Omroep West

Further research

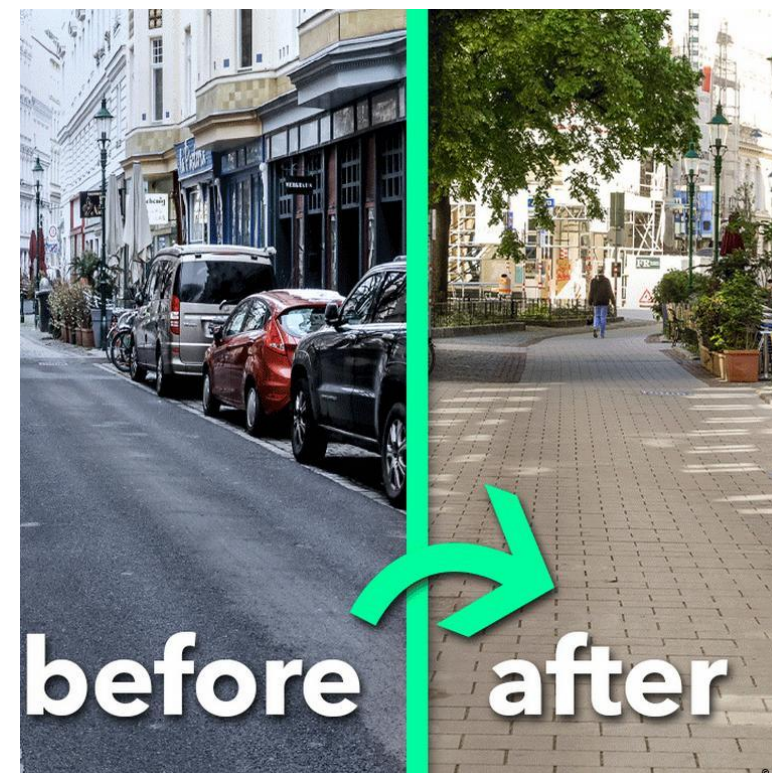
Applicable in other countries?

Lisbon



Source: Rita Prates

Vienna



Source: DW

Ankara



Source: Ekathimerini



Thank you for your attention!

For more information:

Martijn de Vries, TU Delft / Populytics

m.o.devries@tudelft.nl / martijn@populytics.nl

POLIS

CITIES AND REGIONS FOR TRANSPORT INNOVATION



POLIS25
ANNUAL CONFERENCE

26-27 November 2025
Royal Jaarbeurs | Utrecht, Netherlands

Use our hashtag:
#POLIS25