



# Reshaping spatial & mobility patterns to sculpt a futureproof urban landscape

★ Wednesday, 26 November 2025

☐☐ 9:00 - 10:30

## SESSION 1G

Thinking ahead: Innovative steps forward in Small and Medium-Sizes Cities

## SPEAKER

Wim Schuddinck, City of Gent

**POLIS25**  
ANNUAL CONFERENCE

**26-27 November 2025**

Royal Jaarbeurs | Utrecht, Netherlands

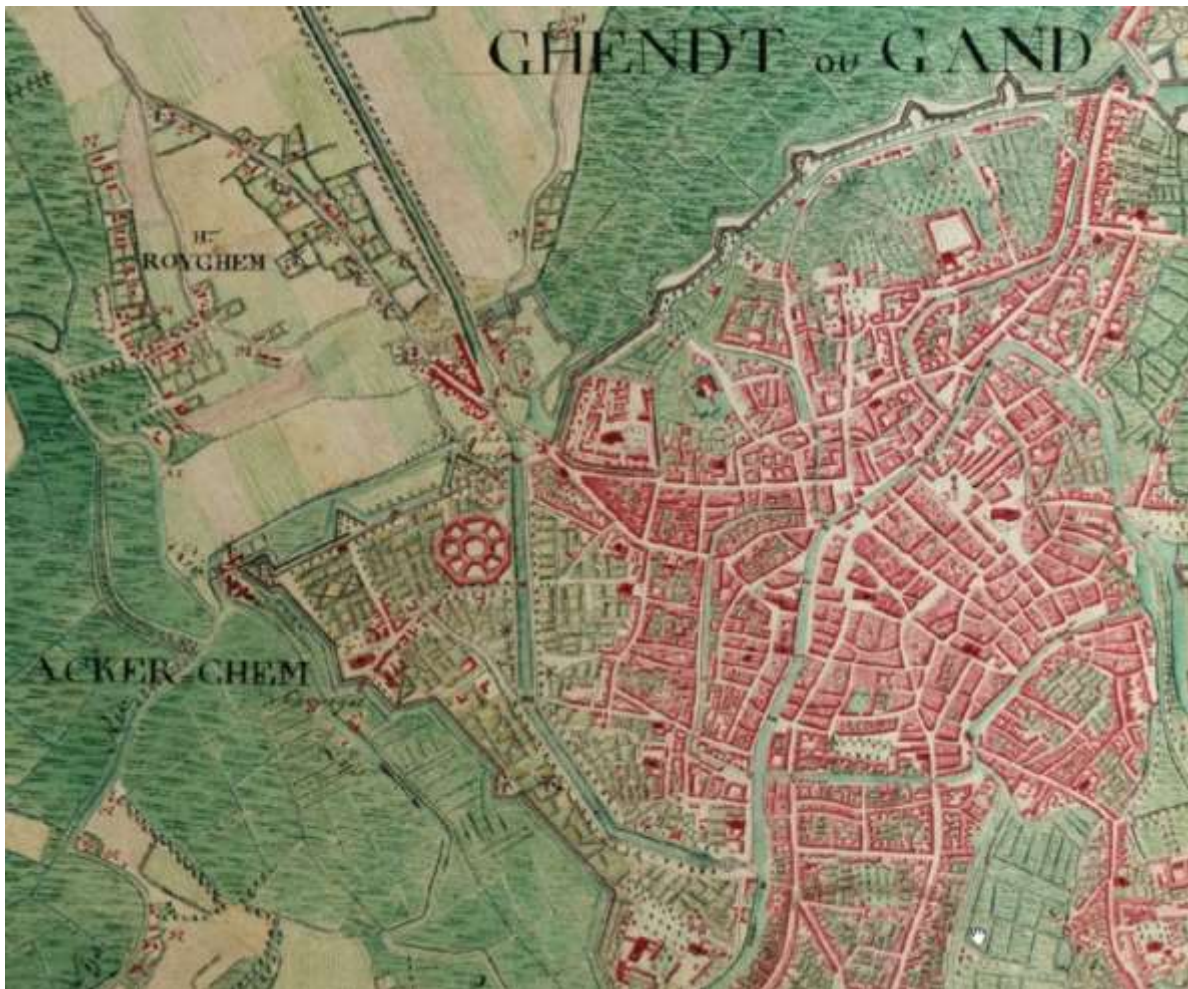


# *Previously in Gent (630 – 1997)*

Historic city without cars

Progress = car domination

Correction = pedestrian area



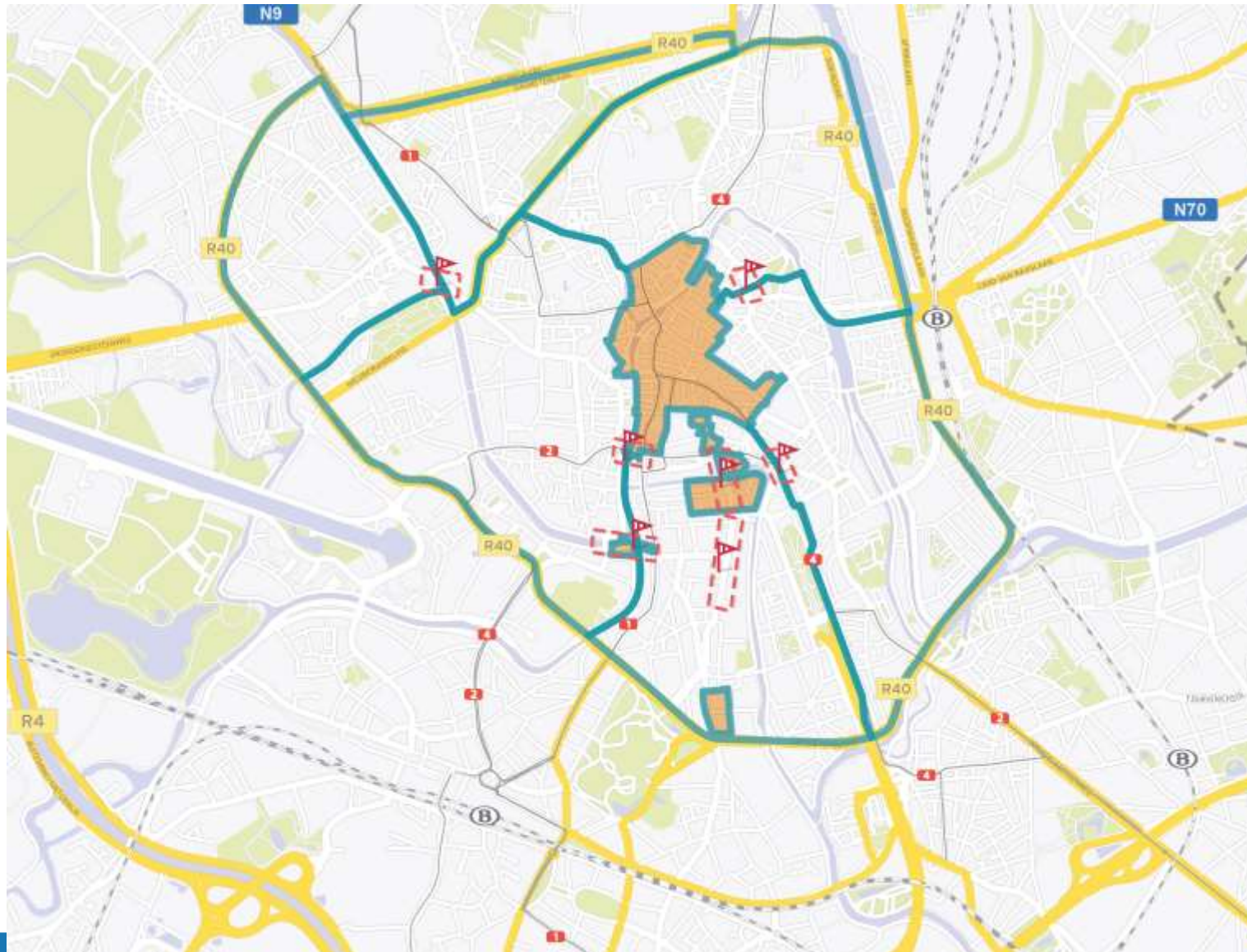


# 'Circulation plan' within city ring road (2017)

New correction: doubled pedestrian area

6 zones to prevent through traffic

More public space: temporary > permanent



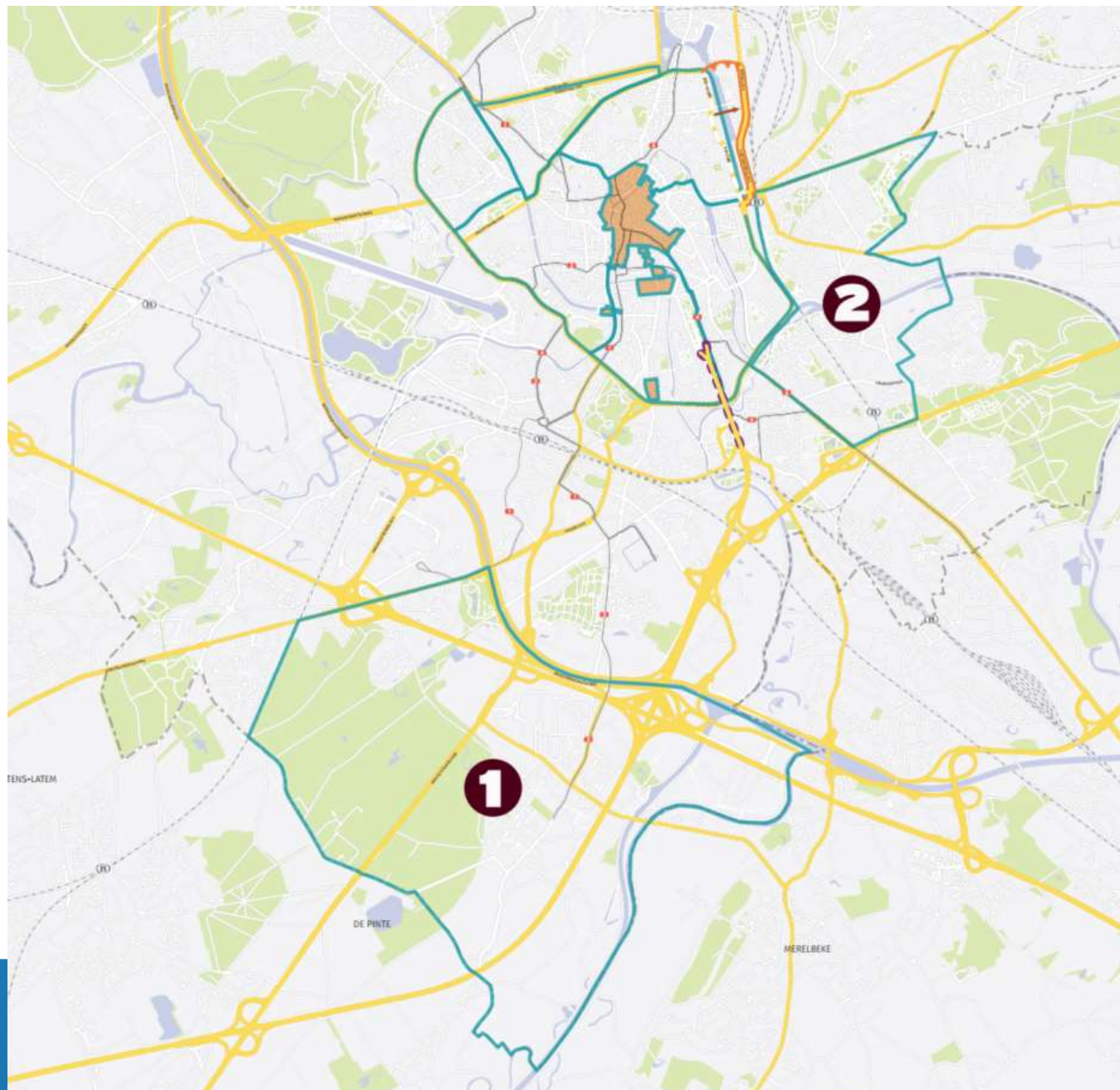


# 'District mobility plans' outside city center (2024)

Bottom up participation

(Sub)urban context & different opposition

Quick measures + planning infrastructure



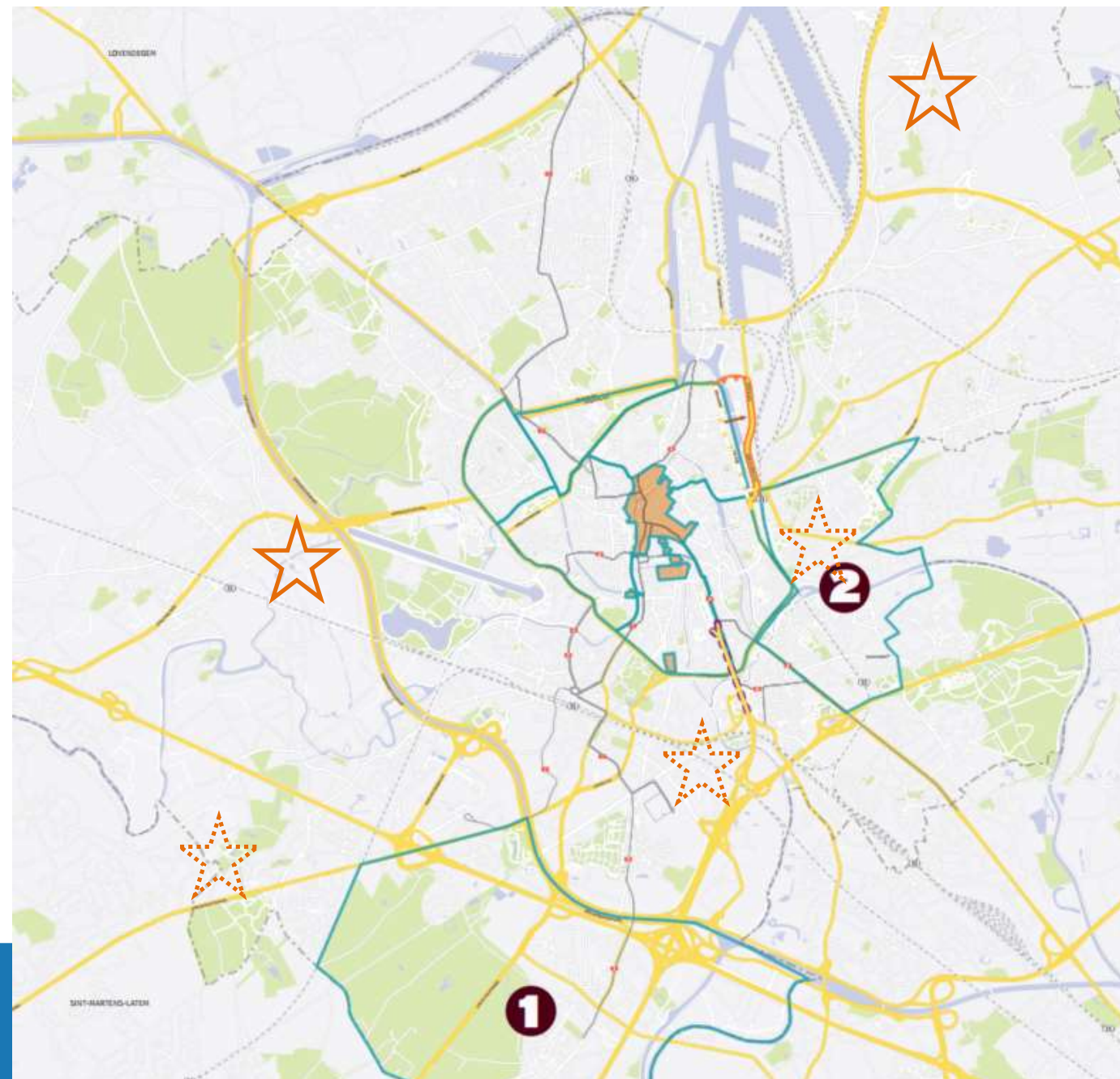


# 'Neighbourhood quality plans' (°2025)

Small & medium scale, integrated approach

Piloting & new public domain

Inspired by projects in sub-municipalities



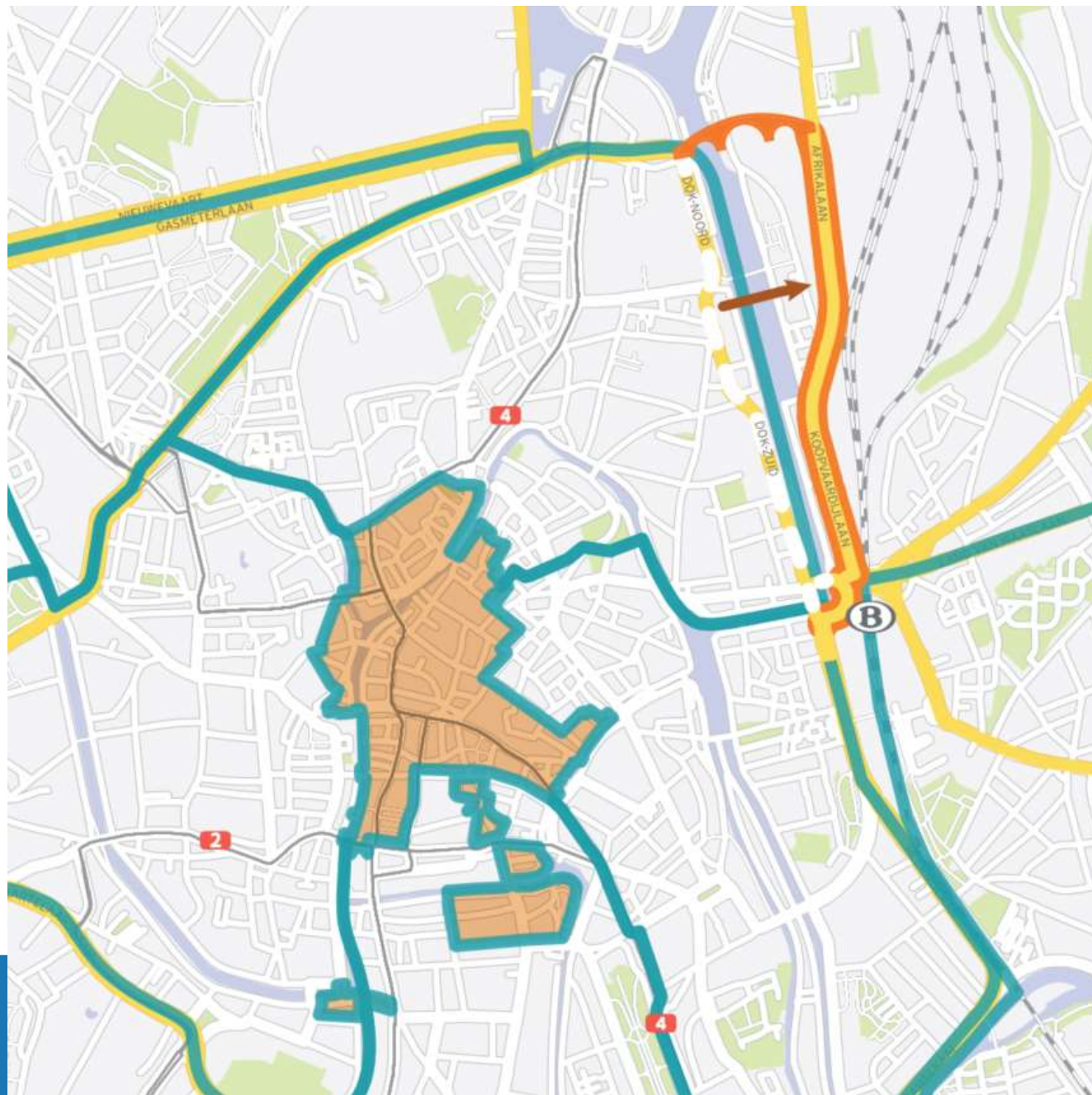


# New bridge for a bigger city center (°2021)

Push city ring road outwards

Adaptation of circulation plan

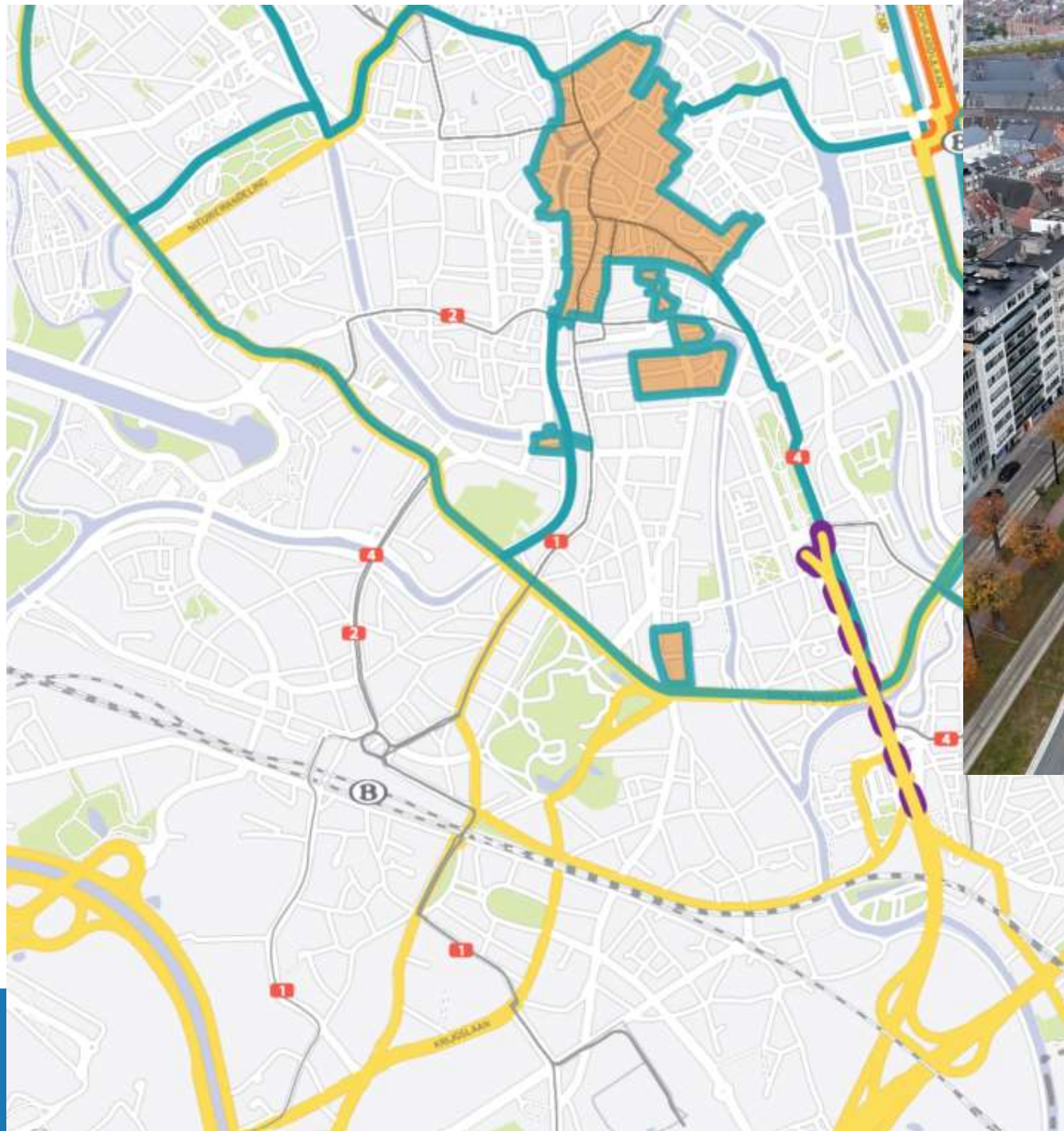
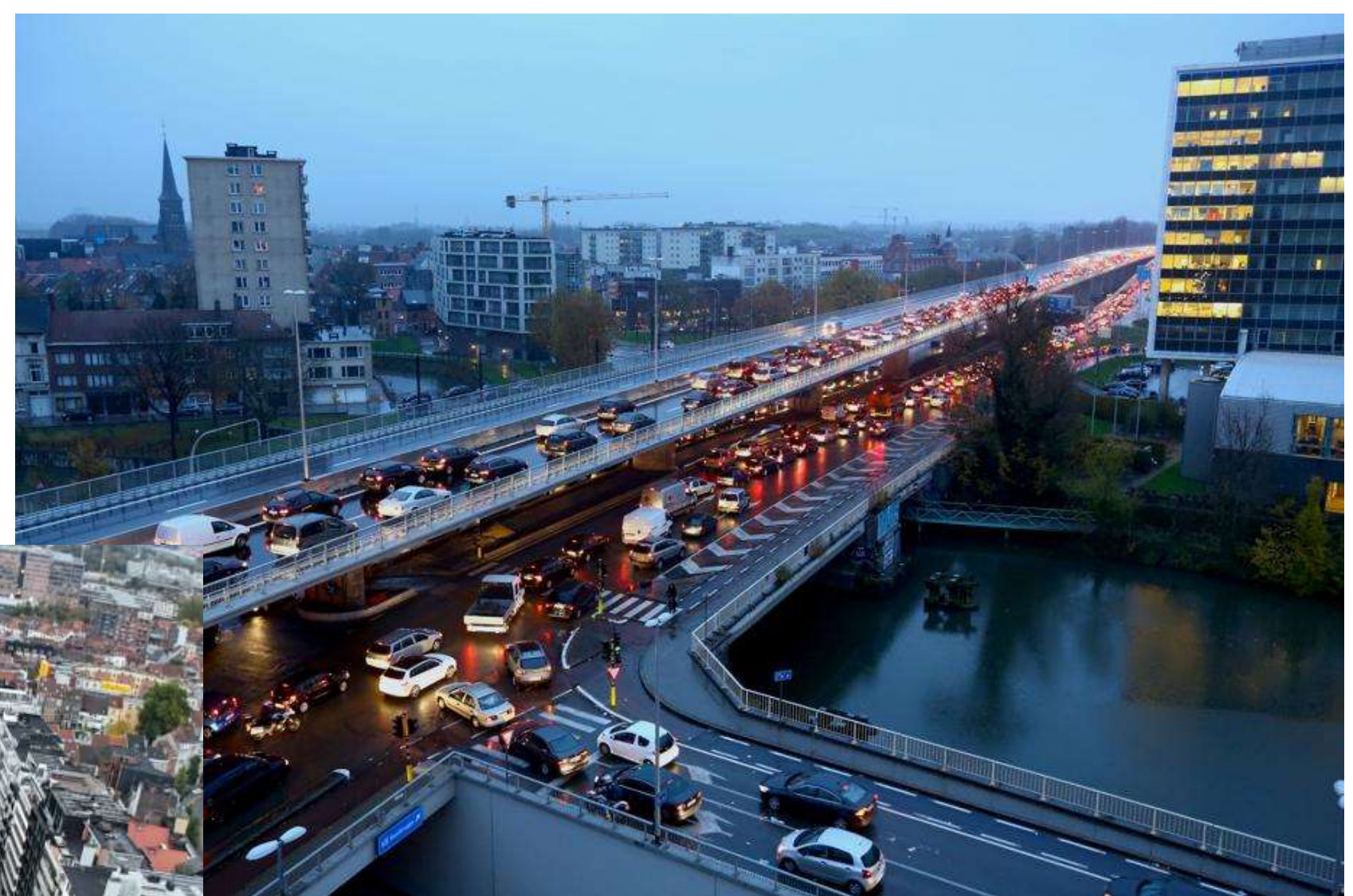
Old harbour => part of low-traffic city center





# New future for big car infrastructure?

B401-study to undo car-oriented choice to inject highway traffic straight into city center





# Push out long distance through traffic

Push out long distance through traffic

-> more life quality & traffic safety

Large scale 'Circulation plan' on regional level



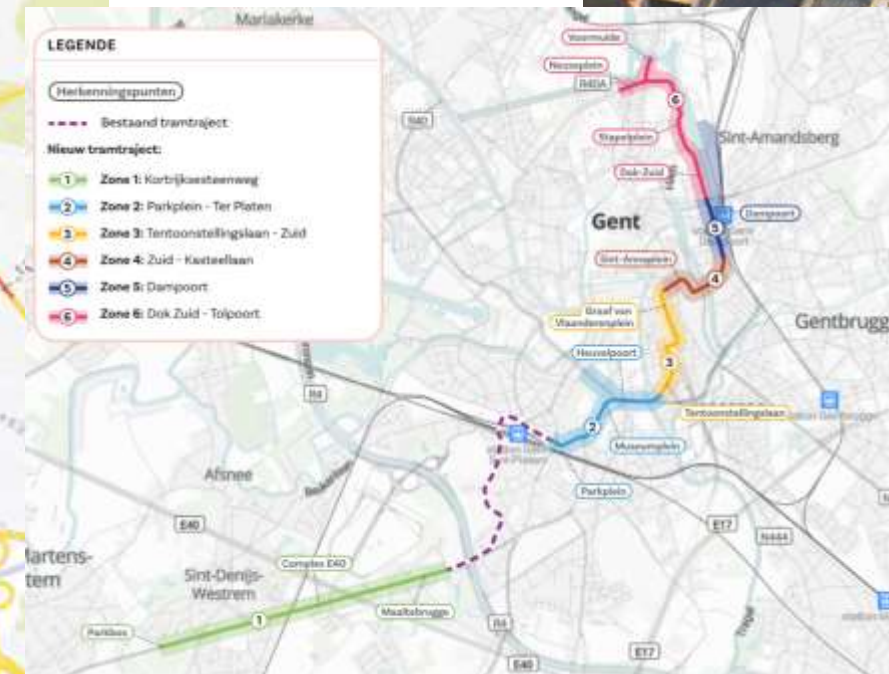
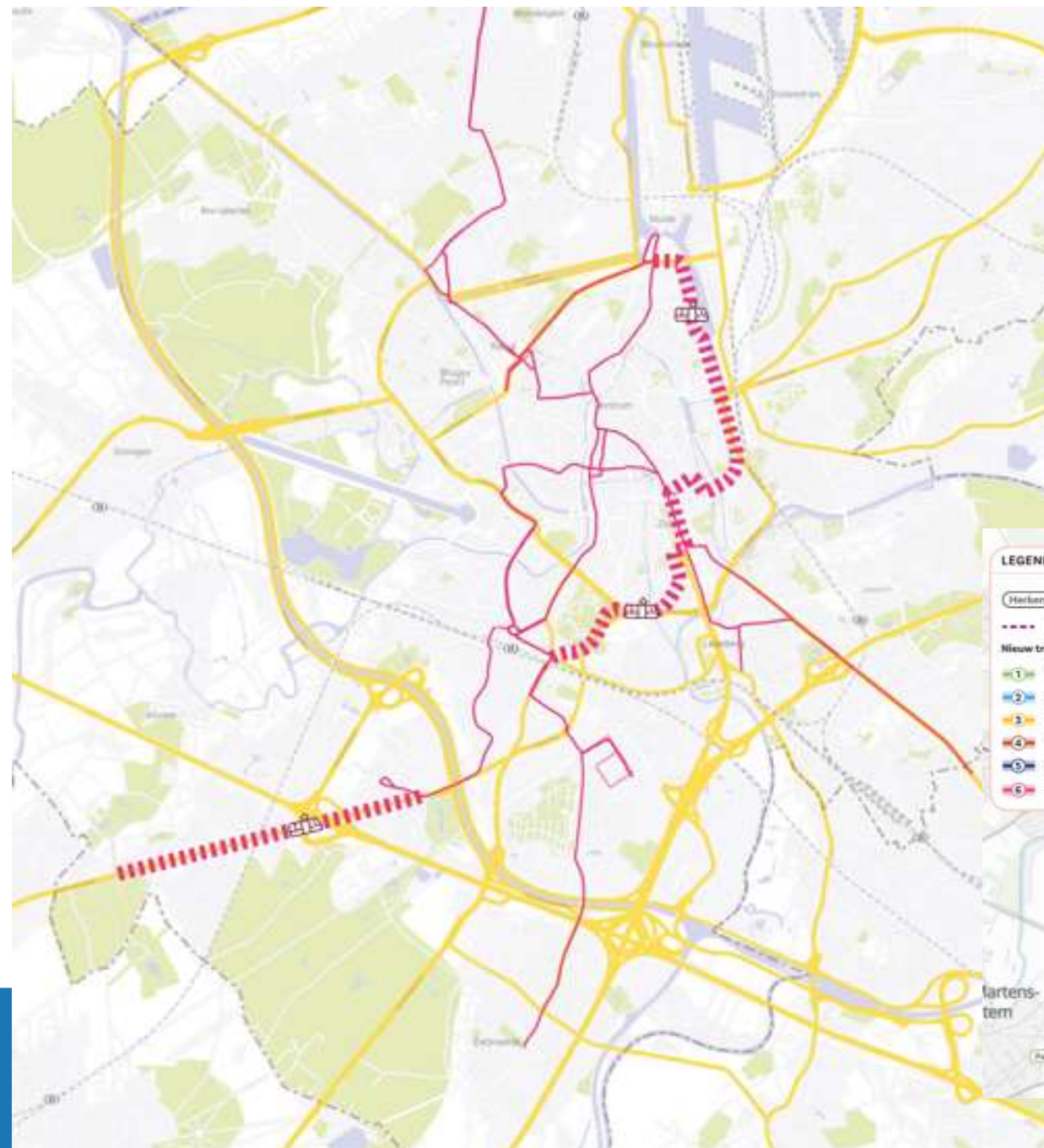


# Space for public transport (°2021)

10 km new tramlines

2 car tunnels to solve barriers city ring road

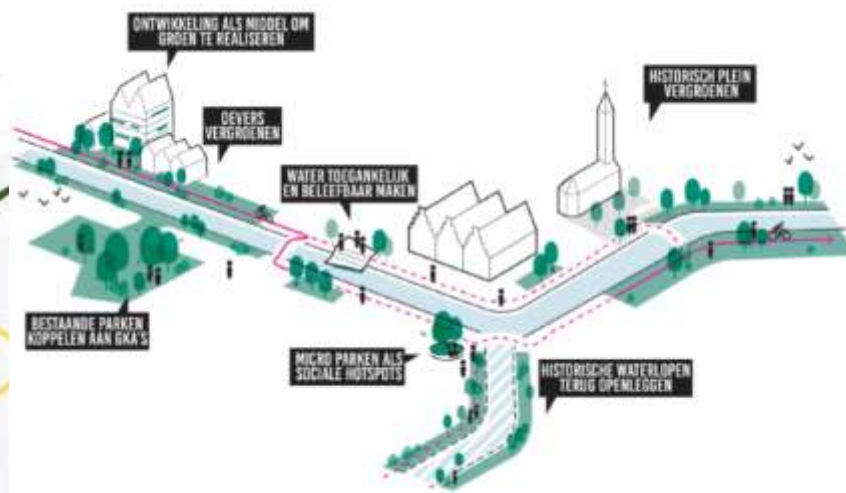
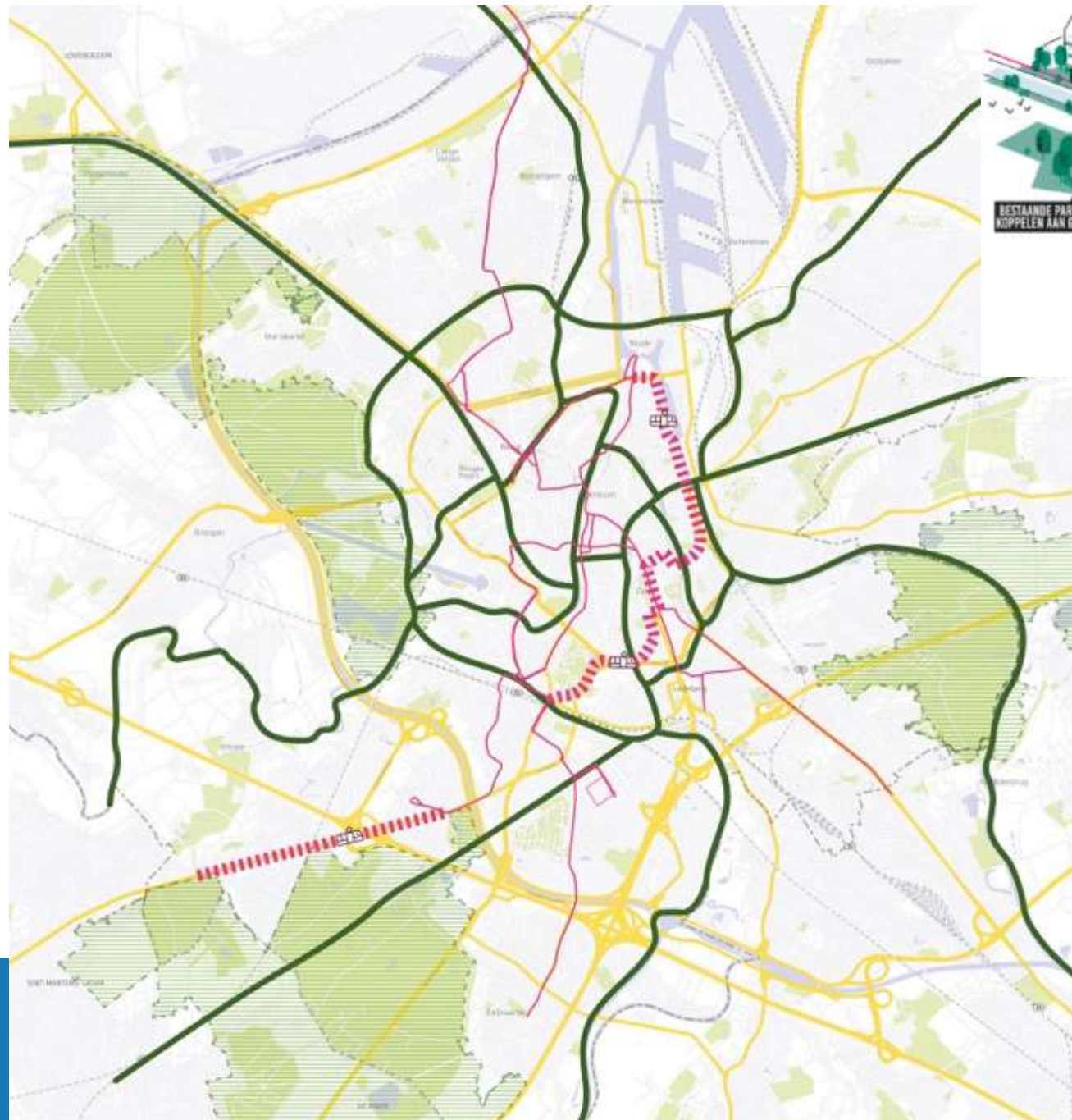
Upgrade to futureproof public domain





# Pull in green and blue oxygen

- Building network with 8 green climate axes + 5 green poles
- Integration with active mobility

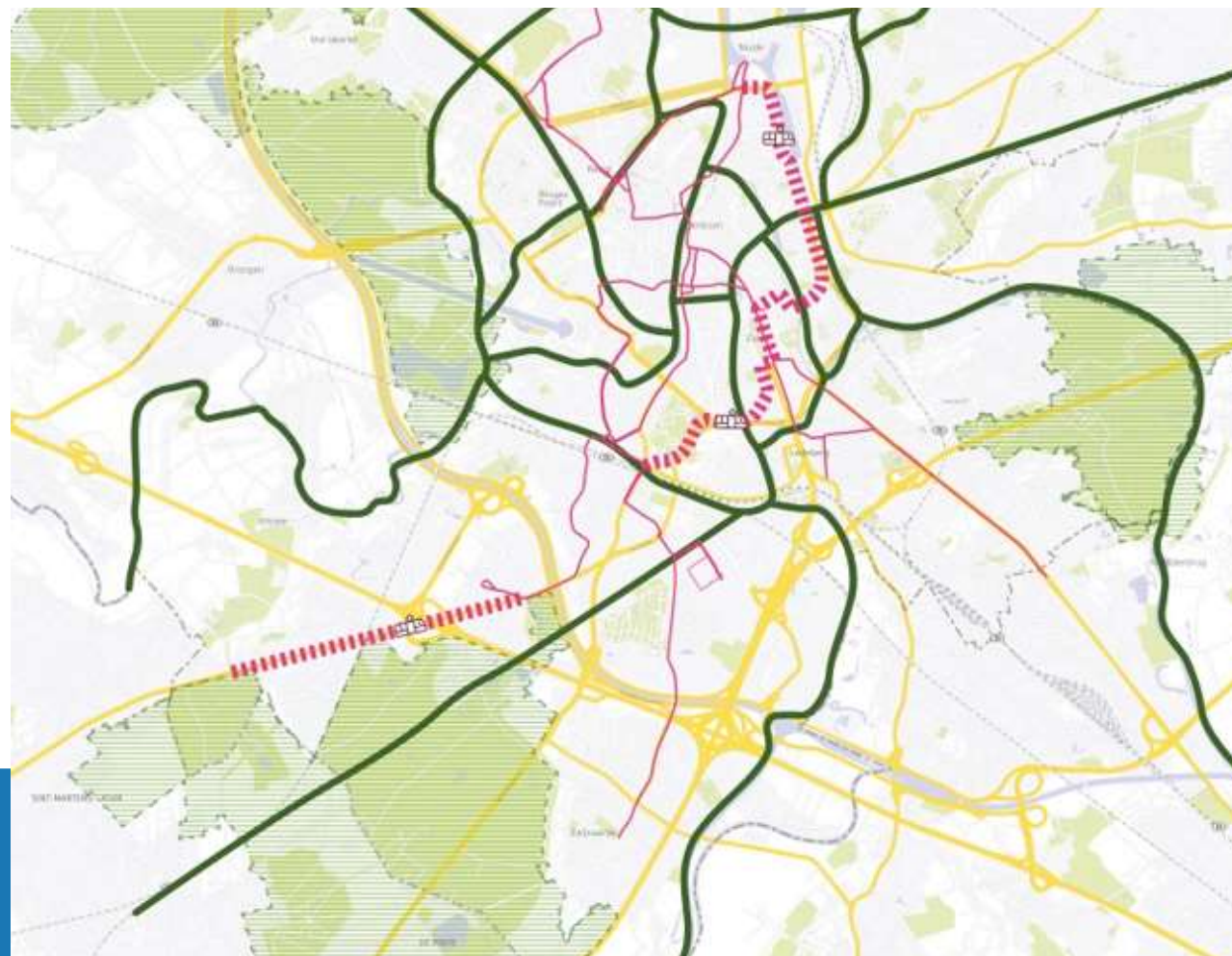




# Copenhagenize INDEX 2025

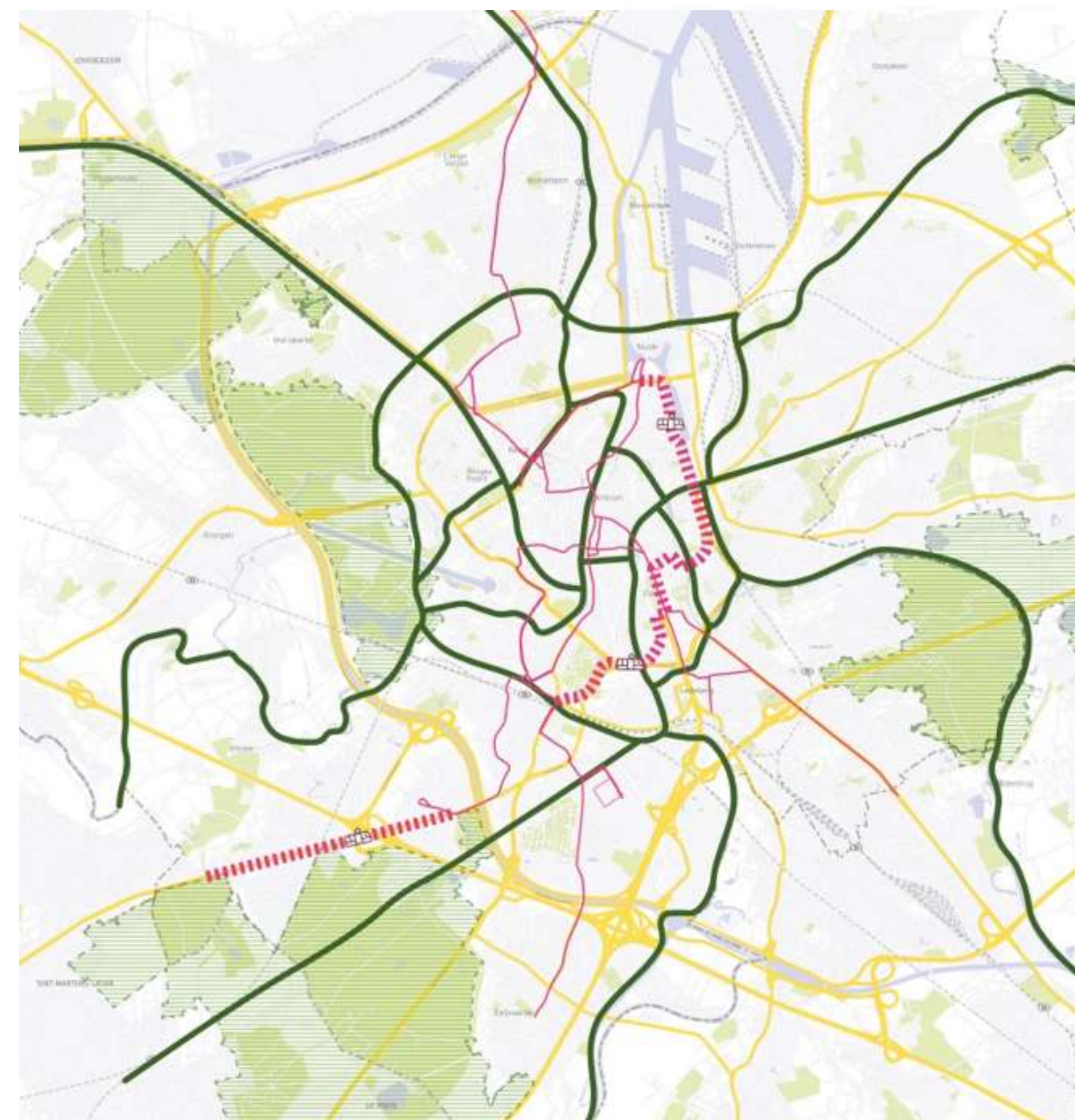
- Ghent = third European city in ranking of Bicycle-Friendly Cities

" The turning point in Ghent came with the new circulation plan in 2017, a masterwork in human-centered urban planning. "





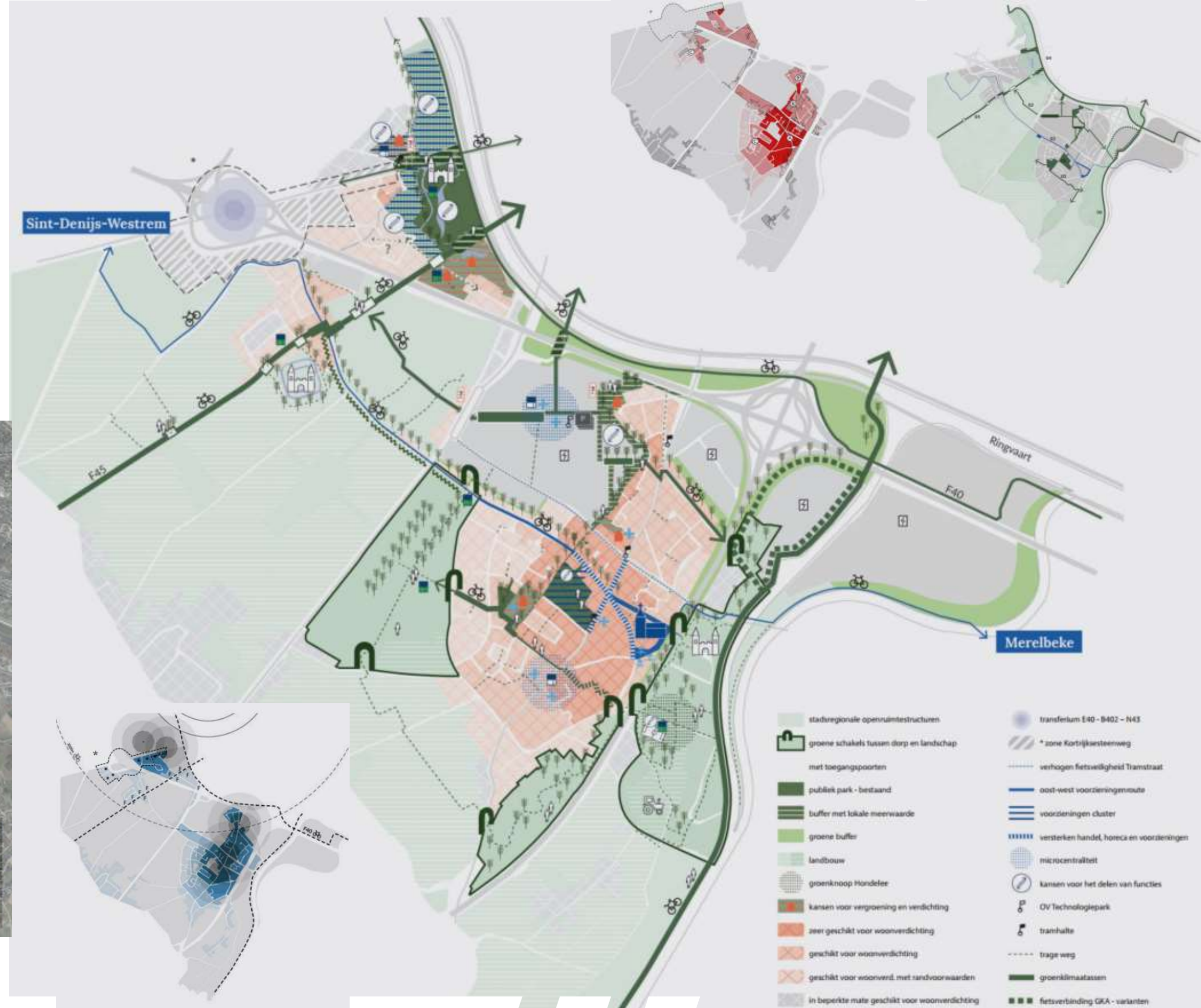
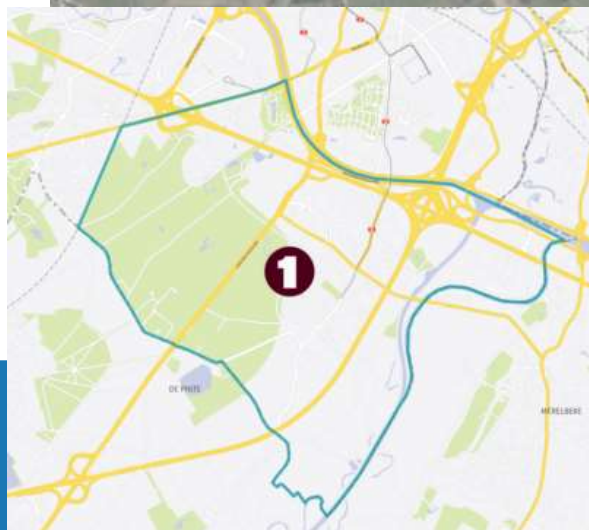
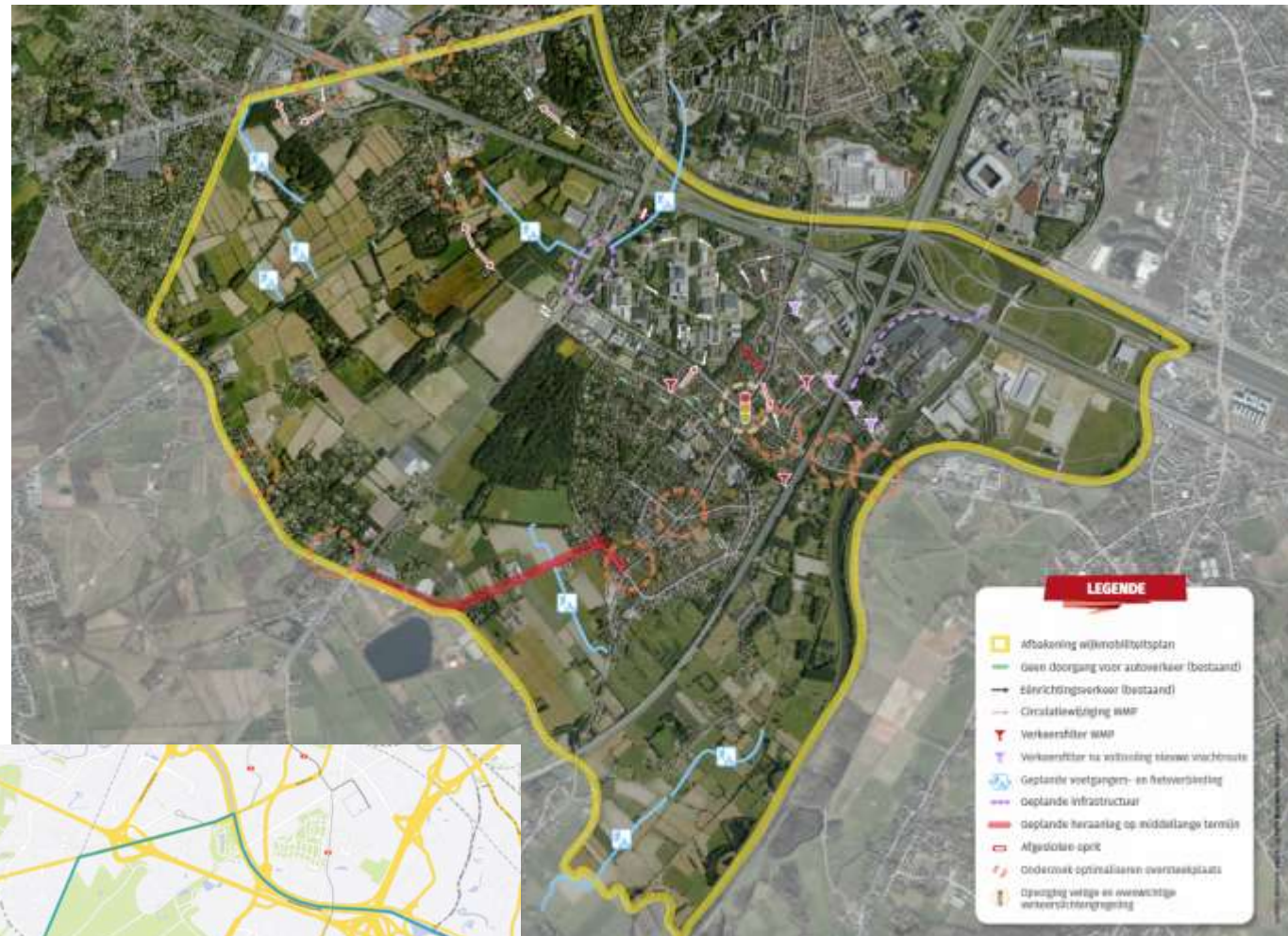
Space for public transport is to be combined with other ambitions (e.g. green/blue network)





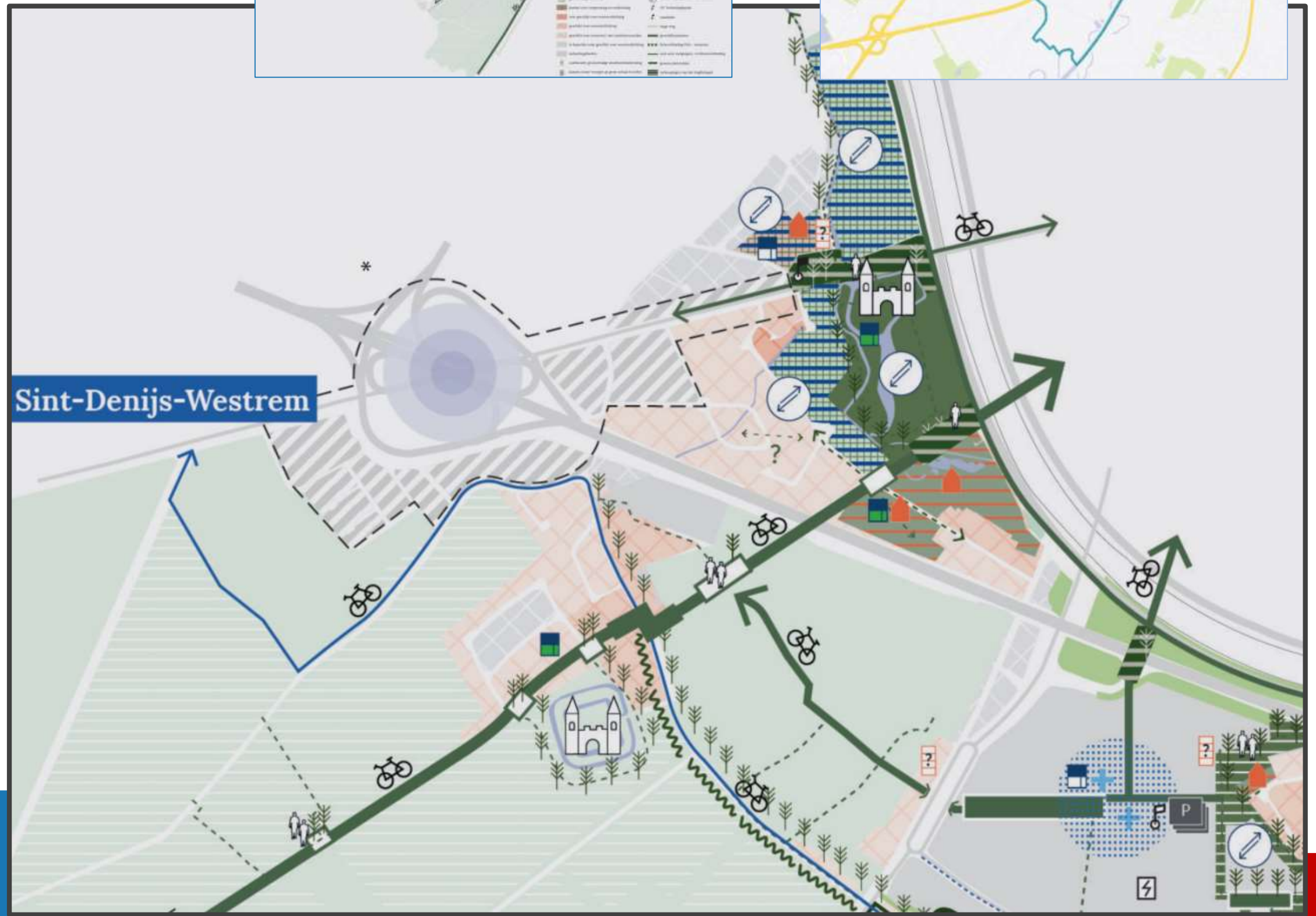
# Urban district plan

Long term vision >< quick measures  
4 integrated layers for more impact:  
**mobility**, **residential densification**,  
**green structures**, **facilities**





# Integrated urban puzzle

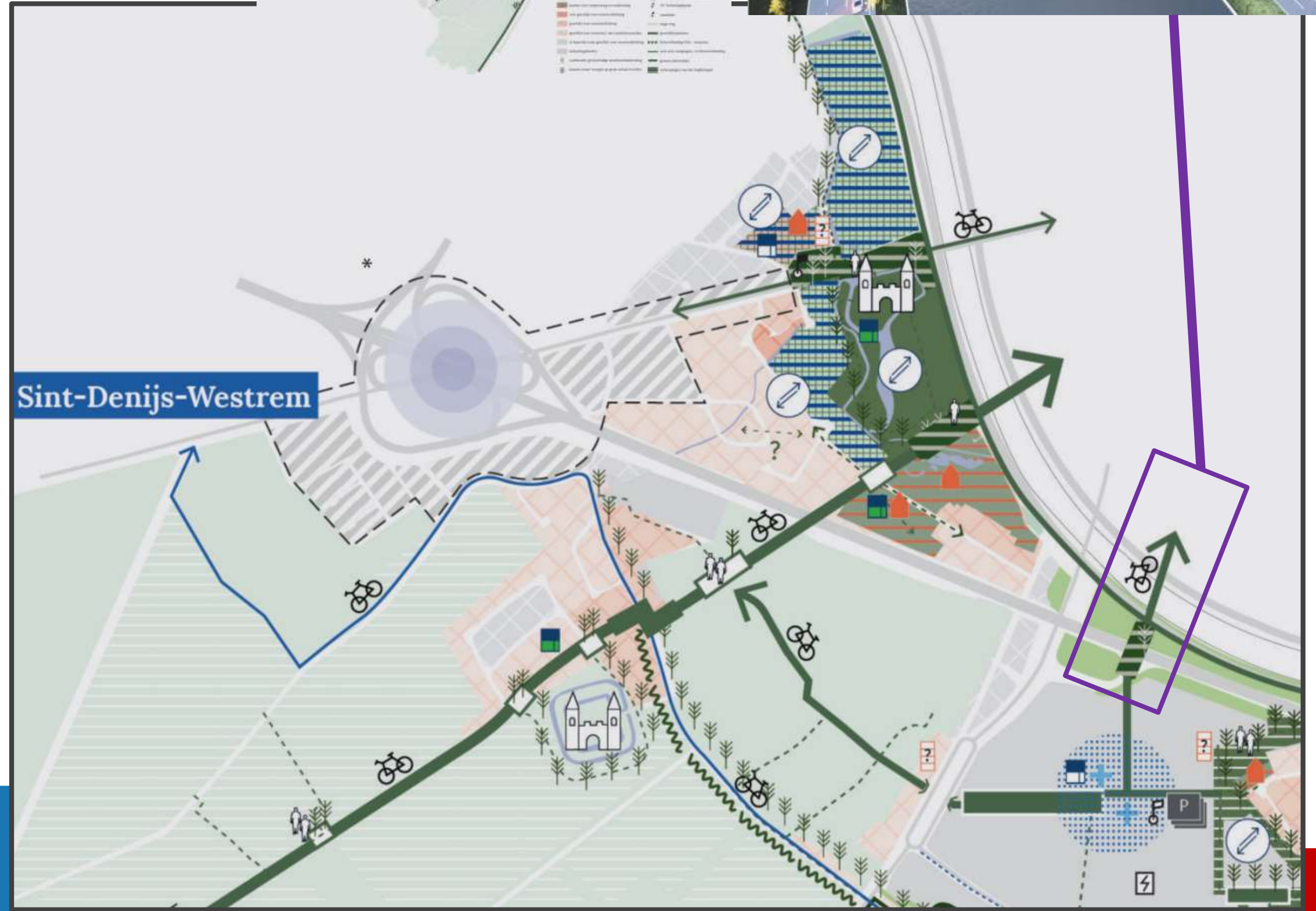




# Integrated urban puzzle



Planning infrastructure





# Integrated urban puzzle

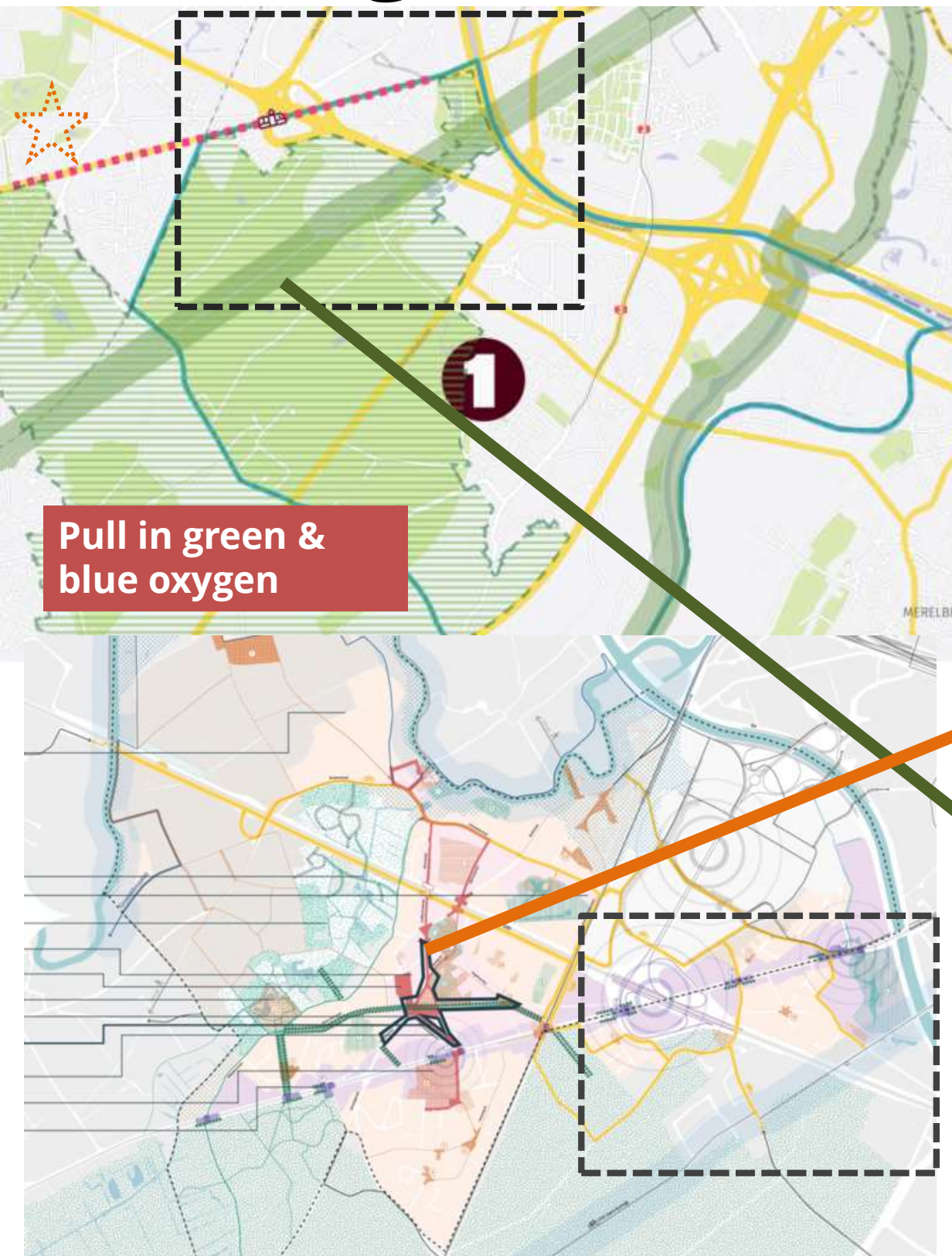


Neighbourhood quality plan





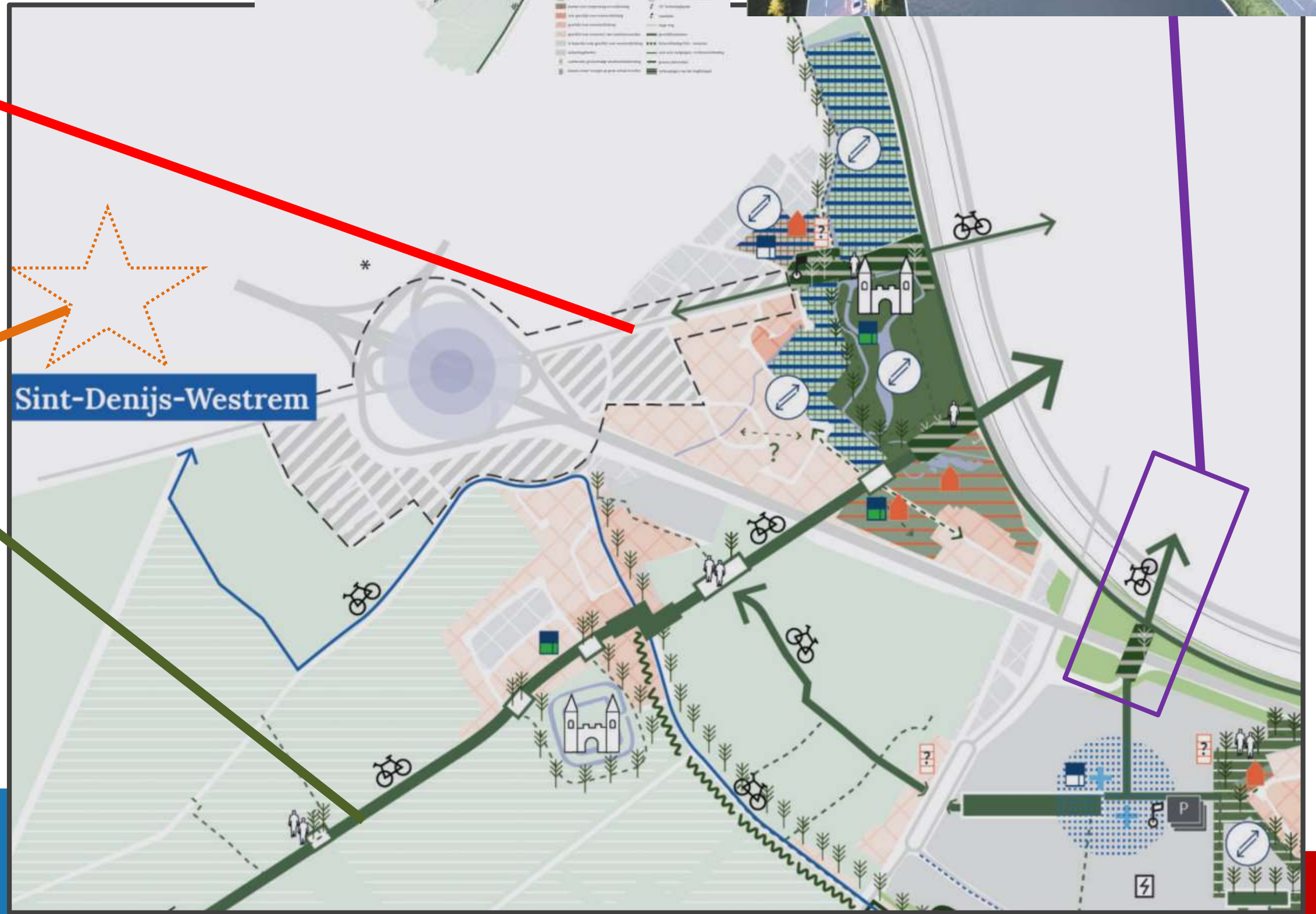
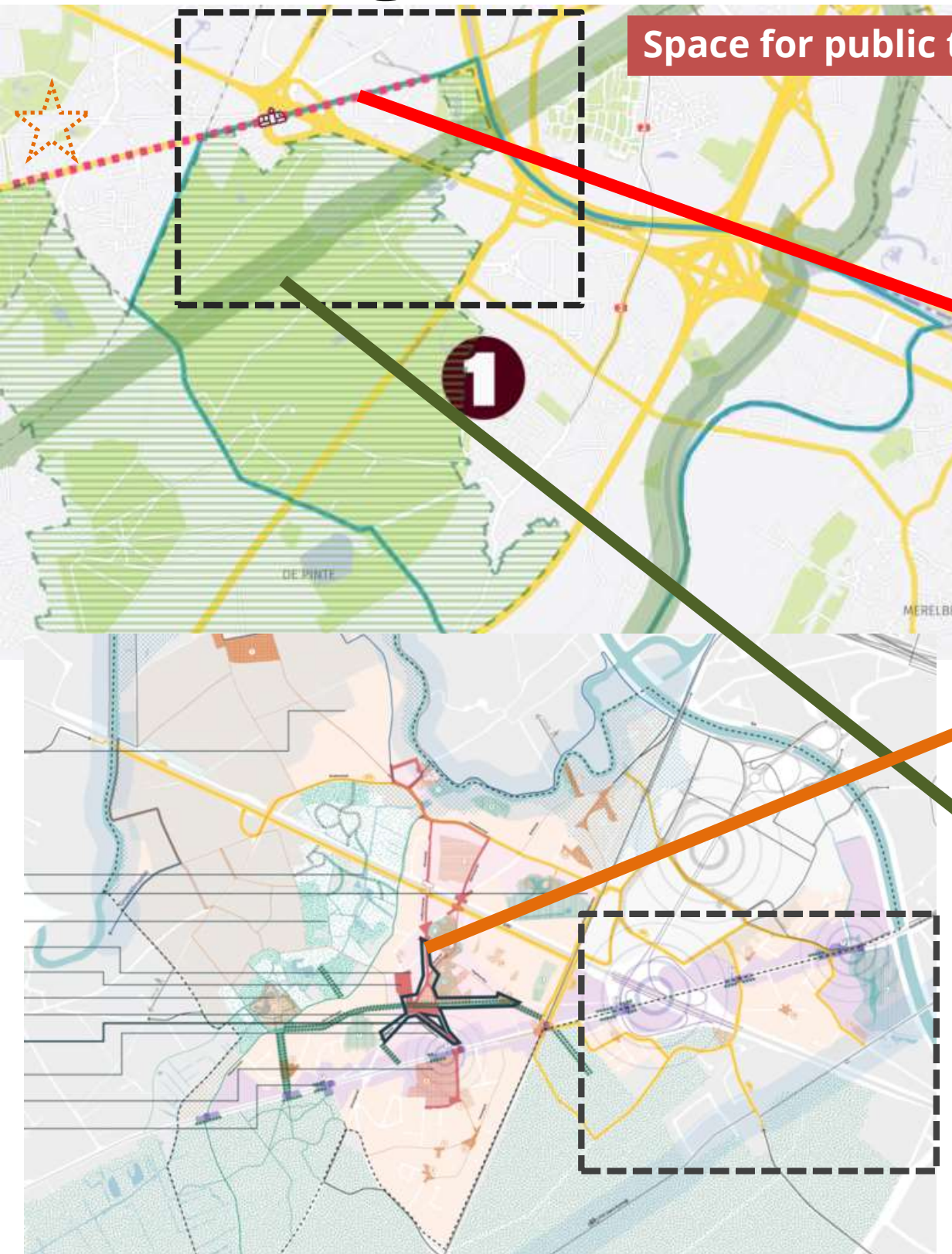
# Integrated urban puzzle





# Integrated urban puzzle

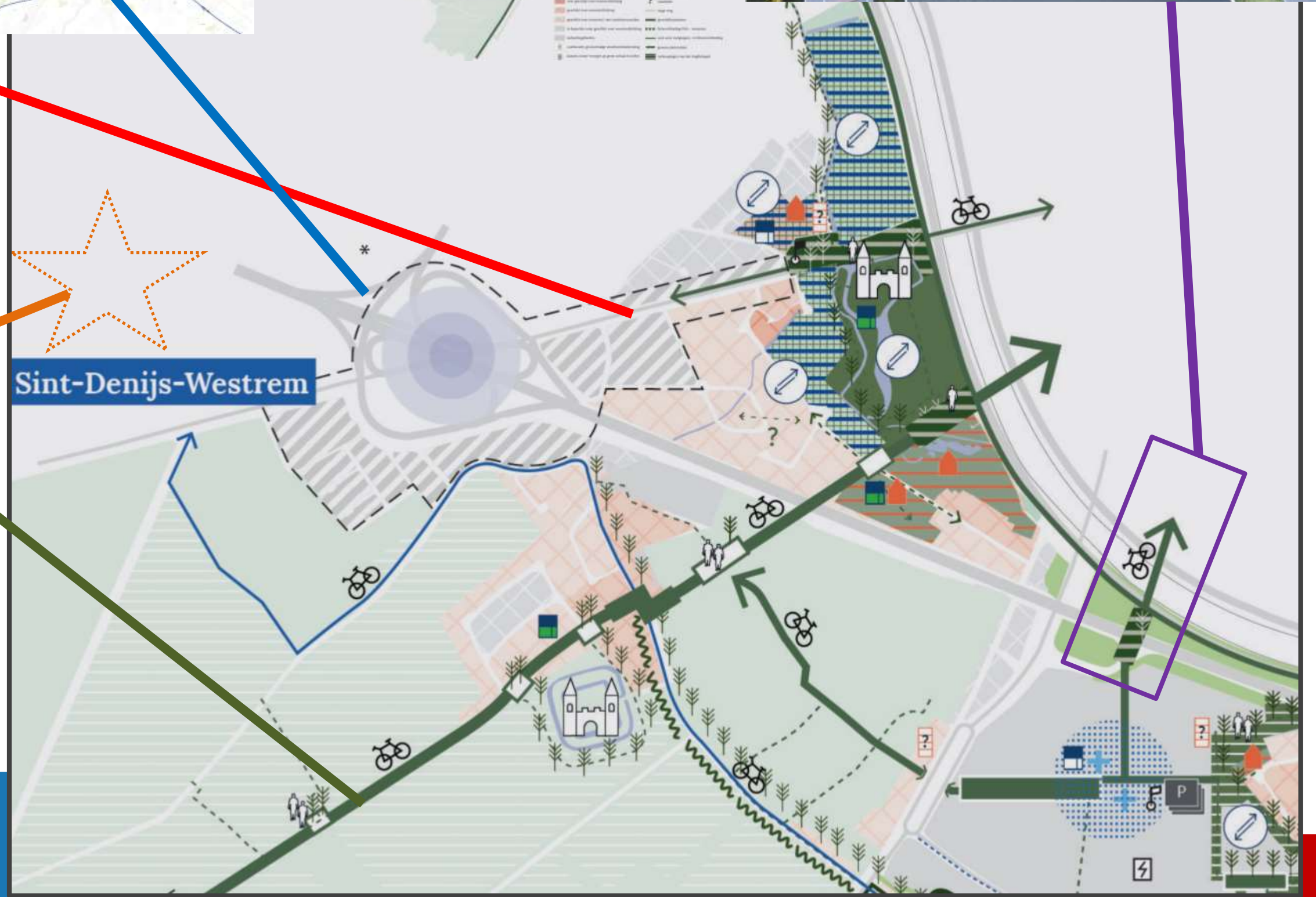
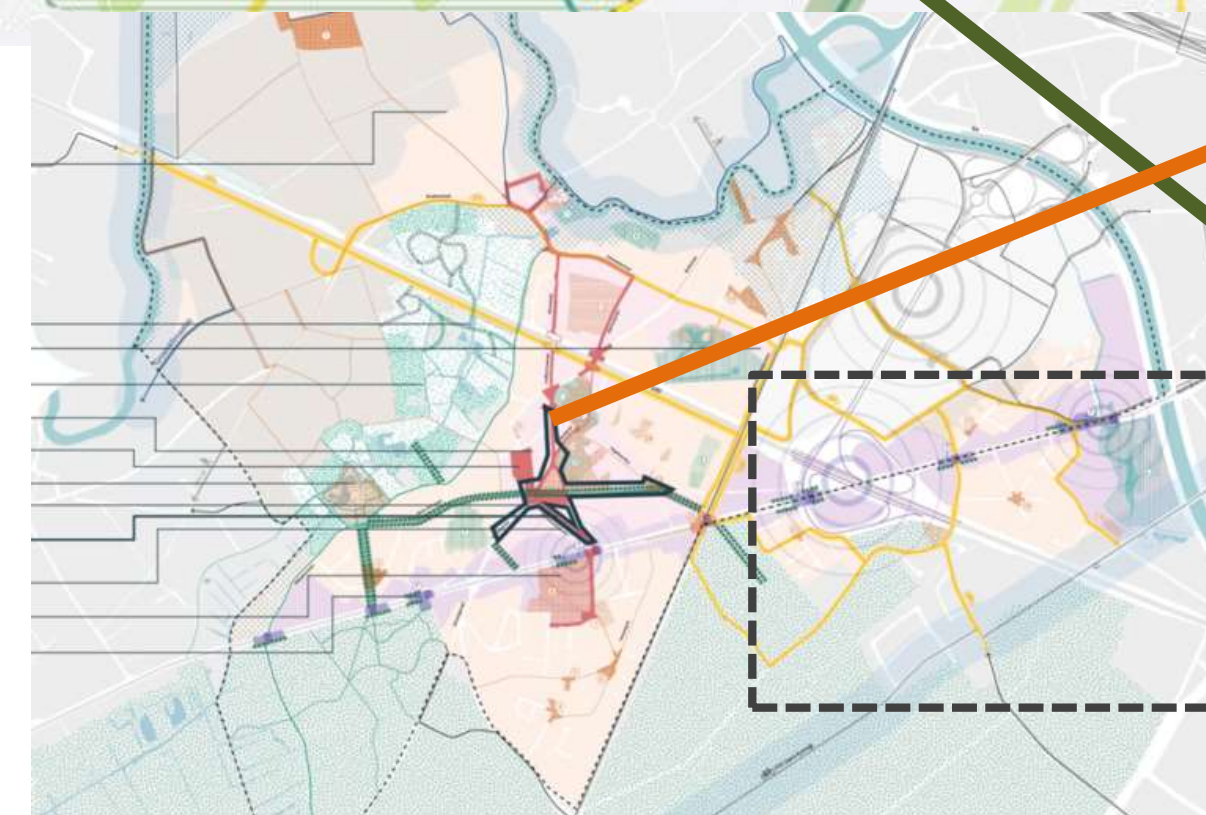
Space for public transport





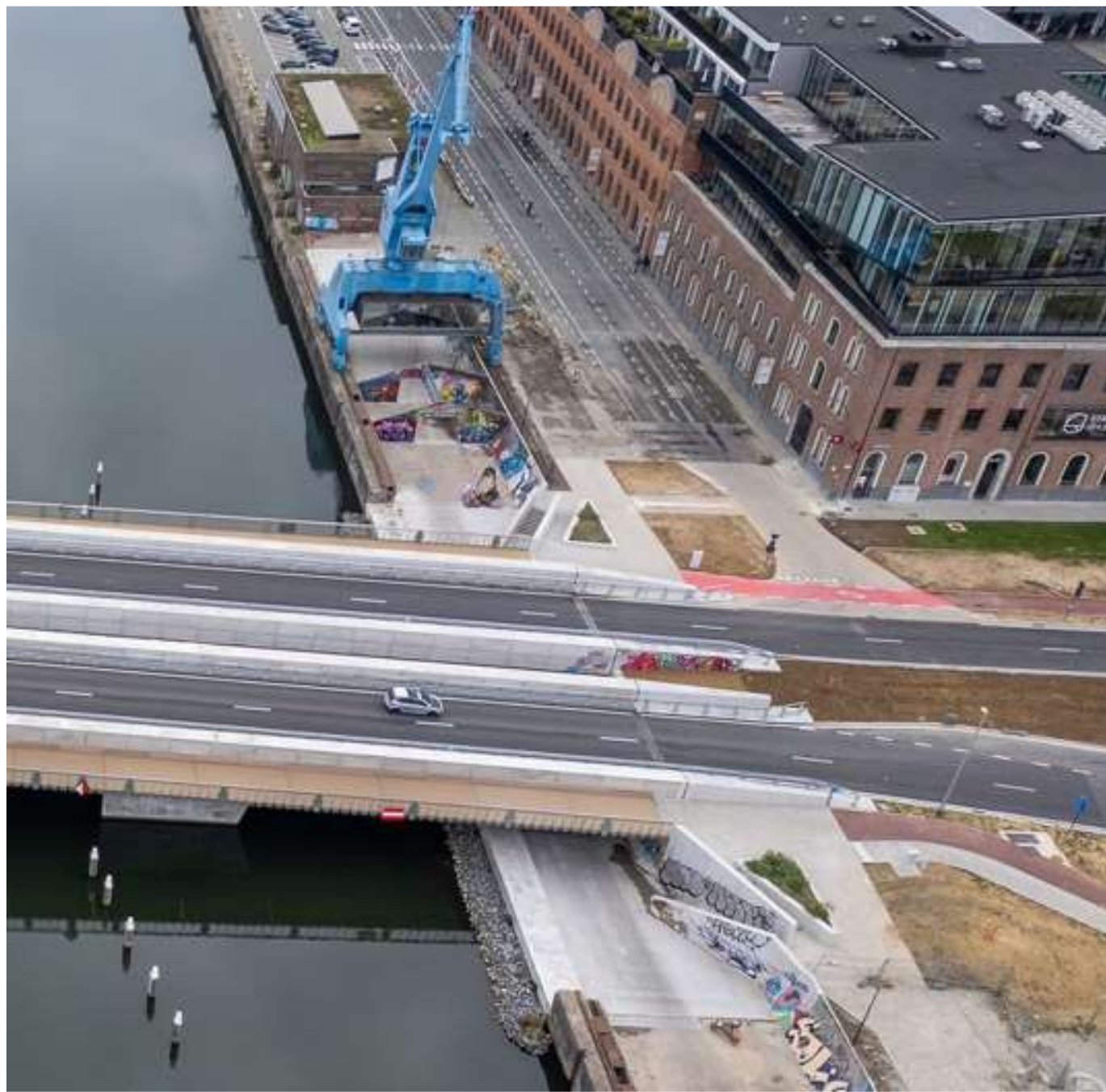
Push out long distance through traffic

# Integrated urban puzzle





# Bigger city center with room for new tramline (2025)







# Thank you for your attention!

## For more information:

Wim Schuddinck - Mobility Company, City of Gent  
Wim.Schuddinck@stad.gent

**POLIS**  
CITIES AND REGIONS FOR TRANSPORT INNOVATION



**POLIS25**  
ANNUAL CONFERENCE

26-27 November 2025  
Royal Jaarbeurs | Utrecht, Netherlands

Use our hashtag:  
#POLIS25