

# POLIS

CITIES AND REGIONS FOR TRANSPORT INNOVATION

ANNUAL  
CONFERENCE  
**2024**

27-28 NOVEMBER 2024

KARLSRUHE (DE)



Baden-Württemberg  
Ministry of Transport



Karlsruhe

# Rural Mobility

Towards a new public mobility eco-system

Wim Dijkstra

Province of Overijssel

the Netherlands

# Life in the Rural Areas

~ 129 Million



EU citizens living in rural  
areas

~82 Million



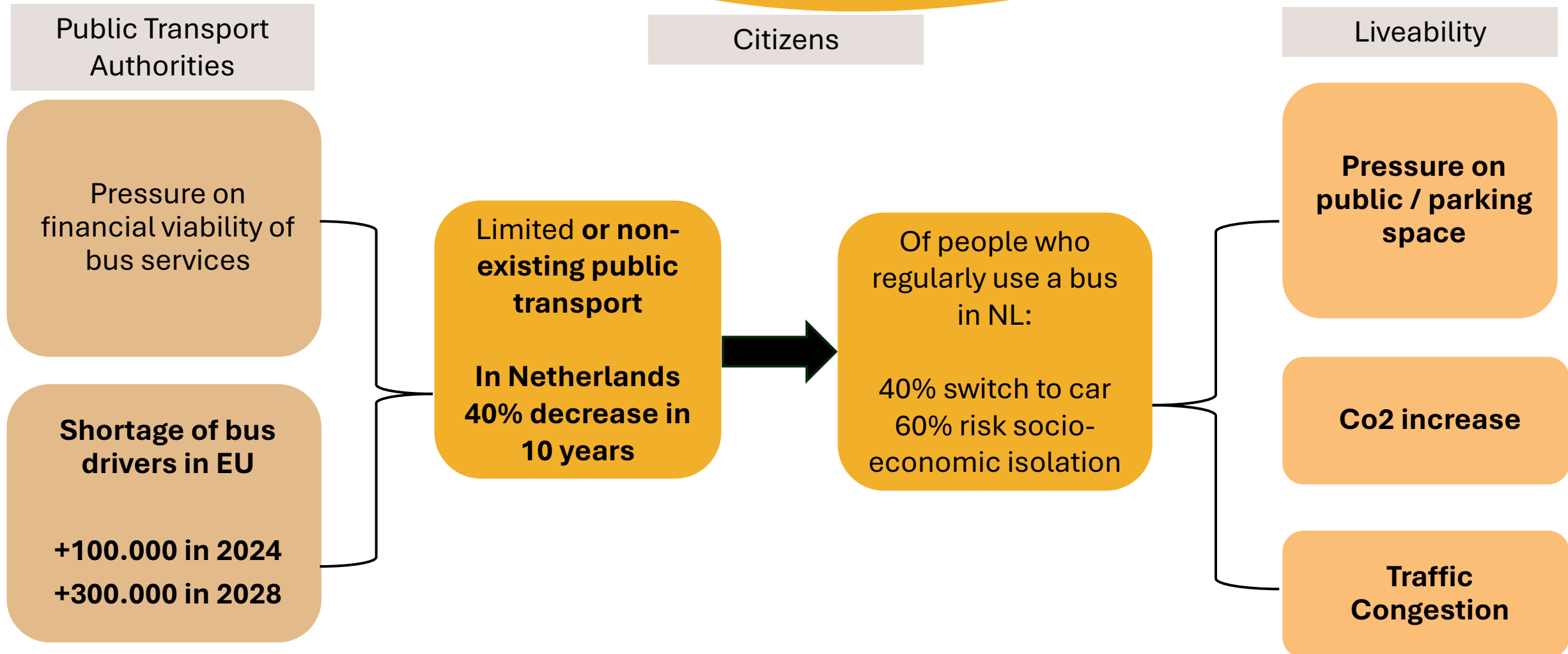
people in the rural areas are  
dependent on their cars

~13 Million



people in rural areas depend  
on public transportation

# The Challenge in rural areas



# Rural Mobility – Interreg Europe 2024-2027

**Mission:** Create an integrated, inclusive, and sustainable transport network for Europe's rural areas.

## **Policy Mapping:**

Identify current policies affecting rural transport.

## **Piloting New Solutions:**

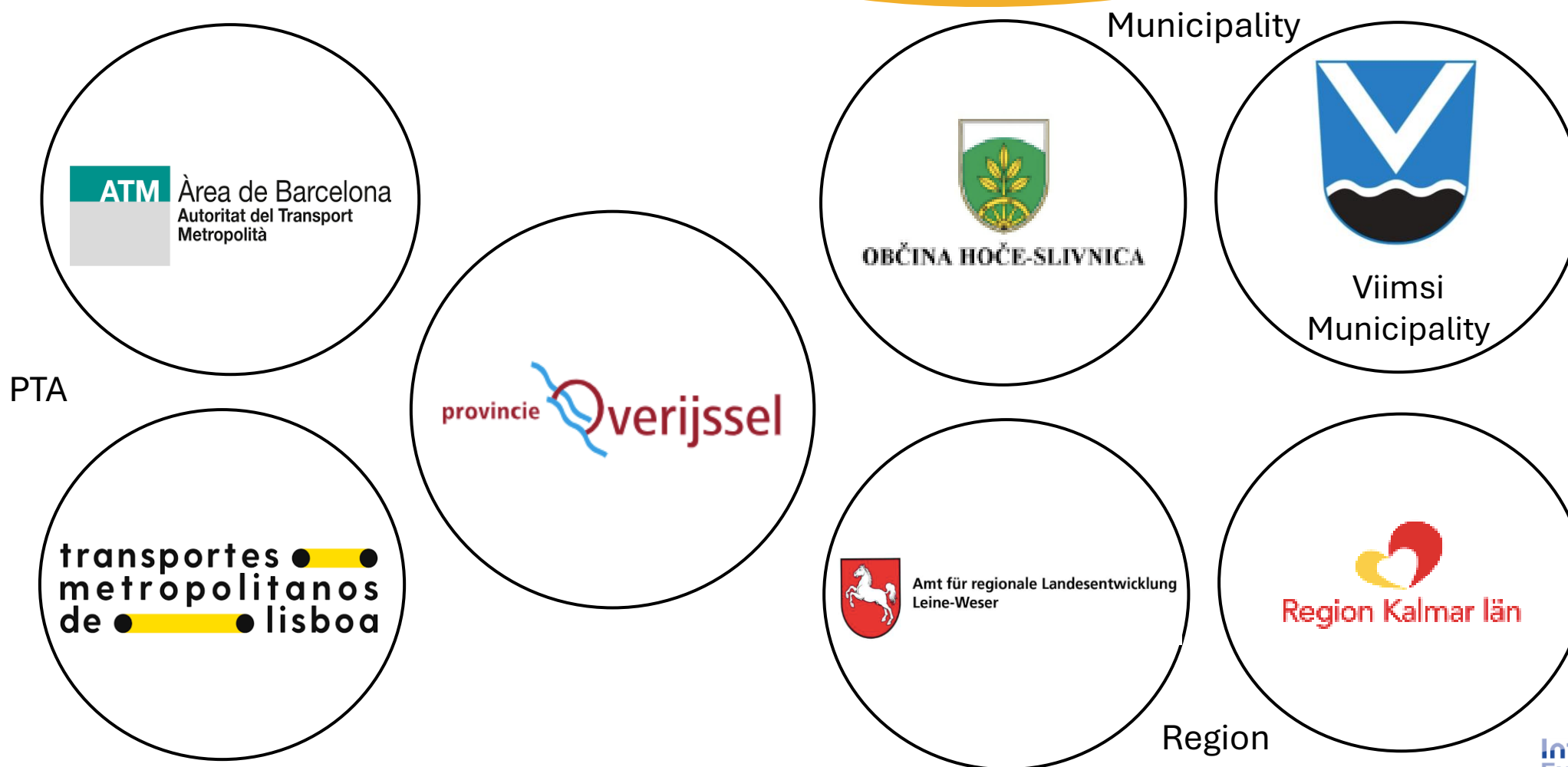
Test and integrate ITS with public transport in seven European regions.

## **Developing a Policy Toolbox:**

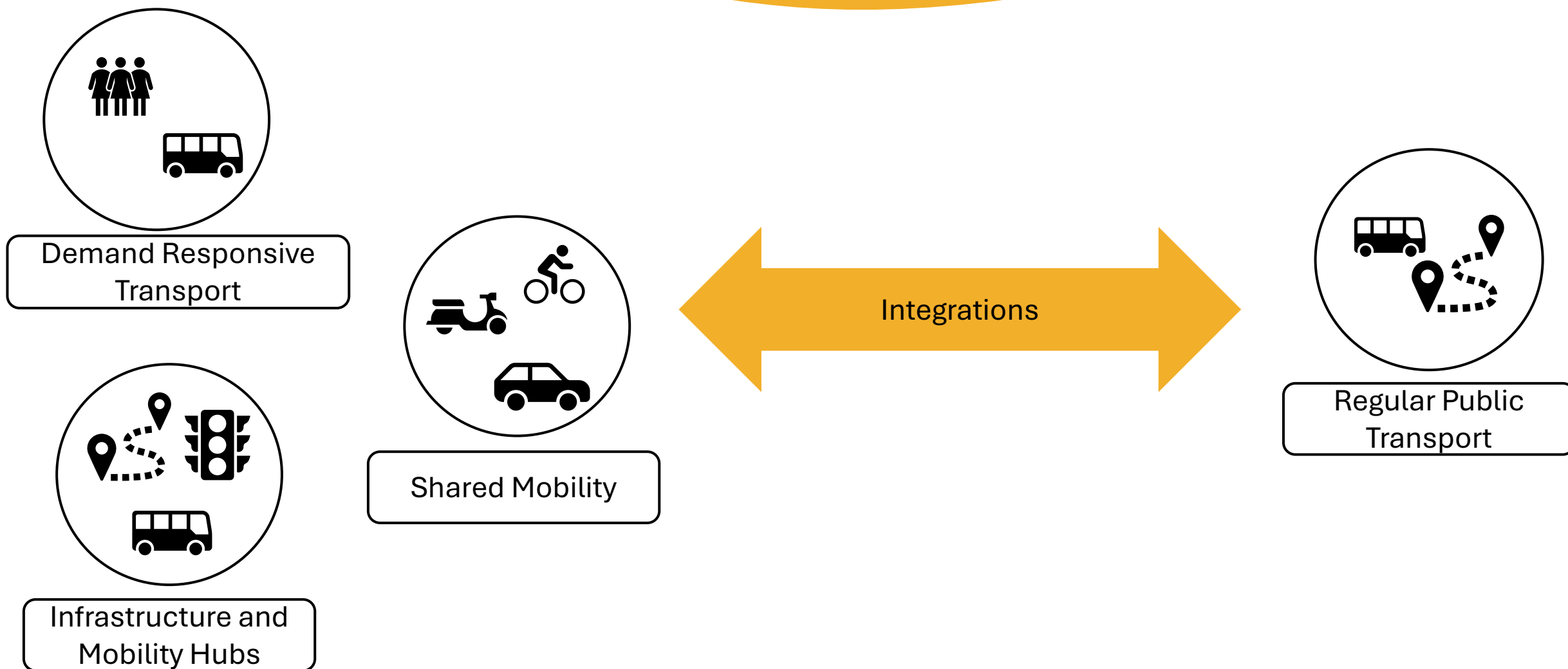
Provide public authorities with resources for integrating ITS and paratransit into their mobility planning



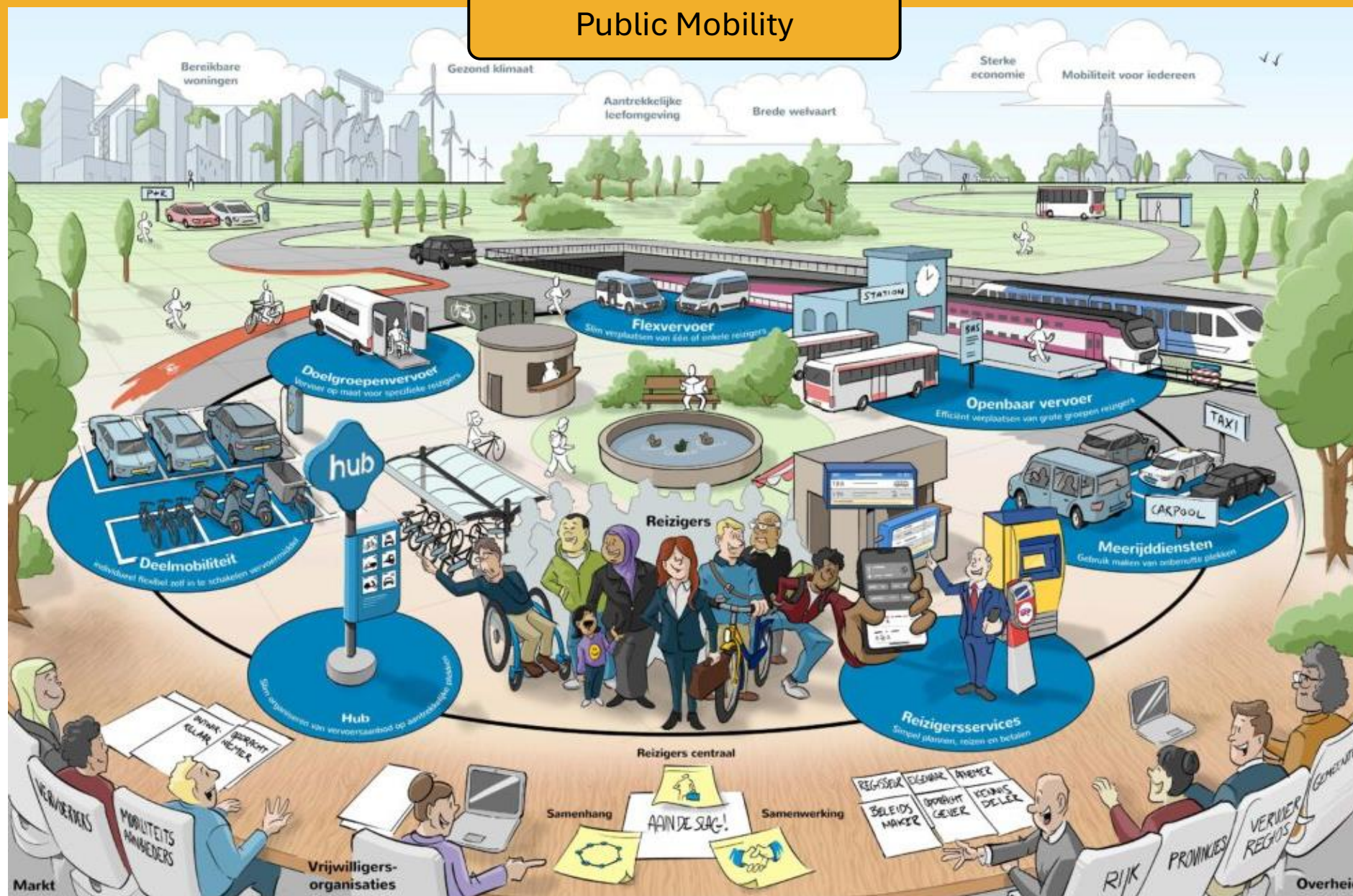
# Rural Mobility Project Partners



# New mobility solutions

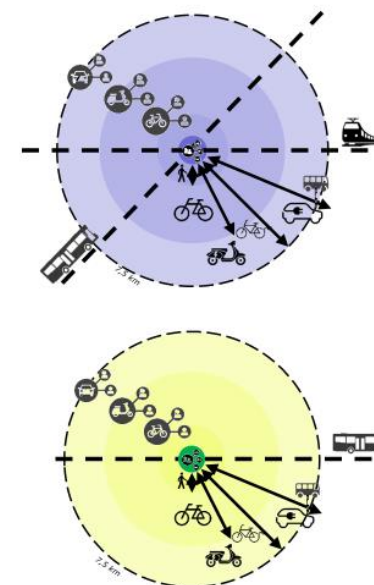
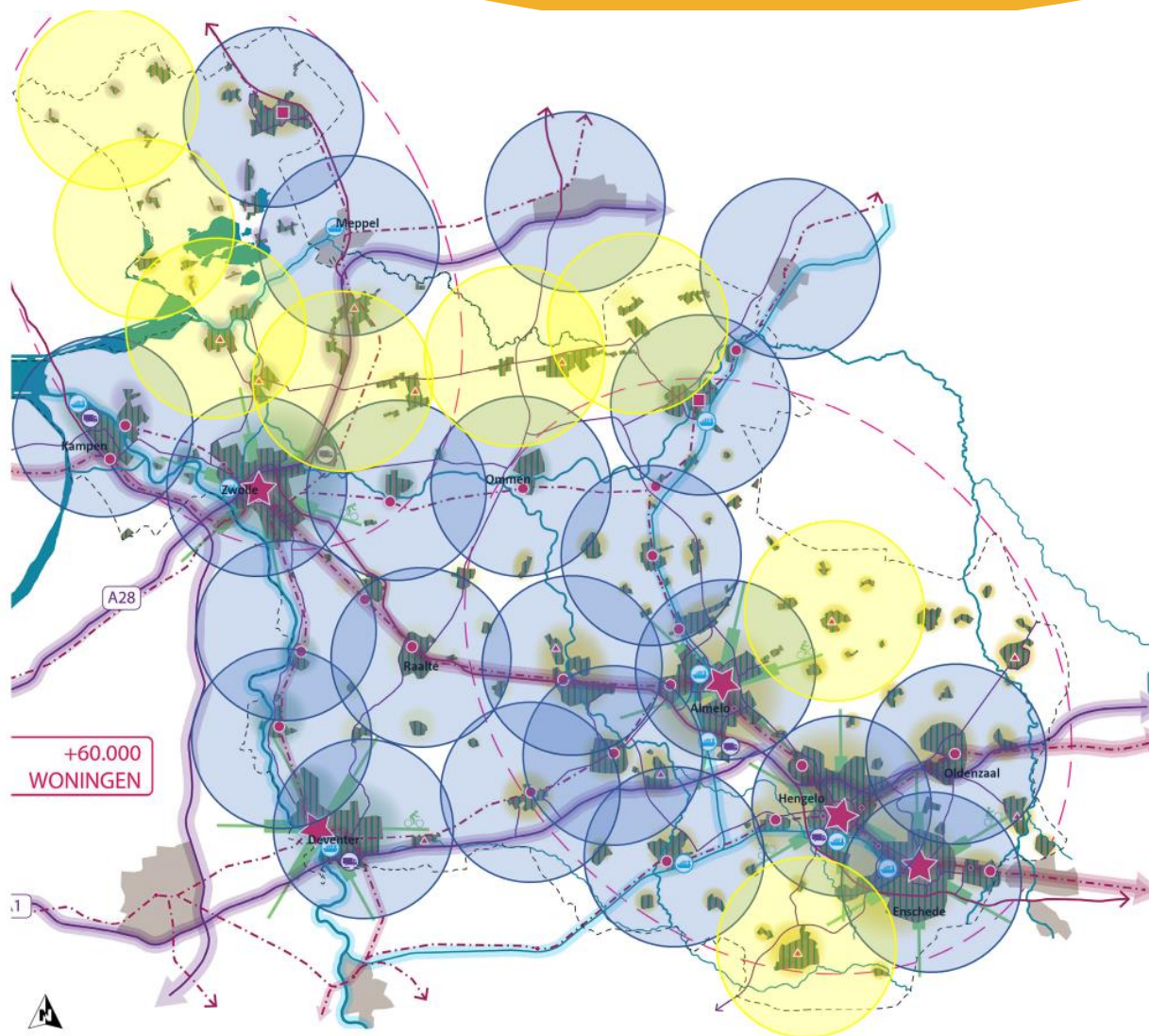


## Public Mobility





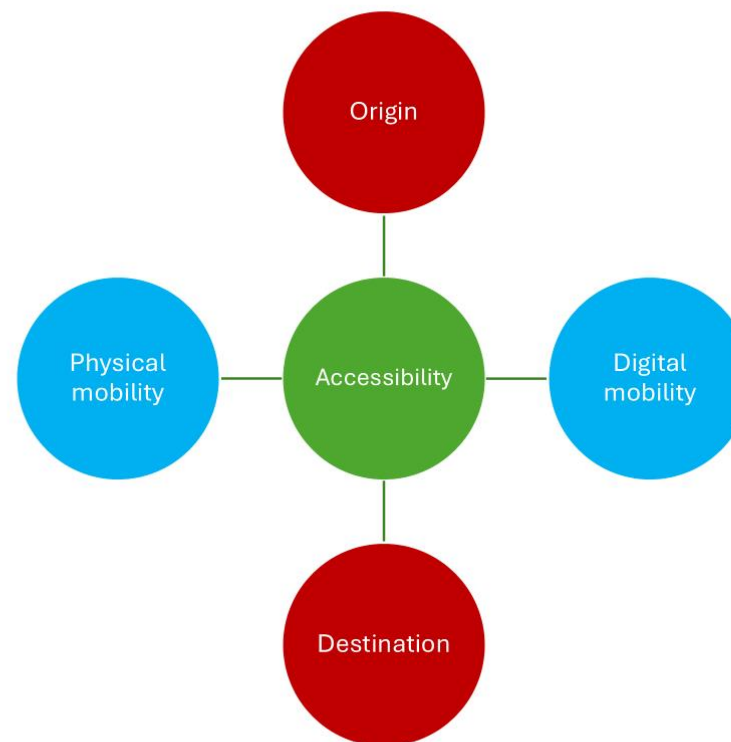
# Public Mobility Overijssel – Proximity of PT



# Rural Mobility and spatial planning

1.

Accessibility  
through  
proximity and  
mobility

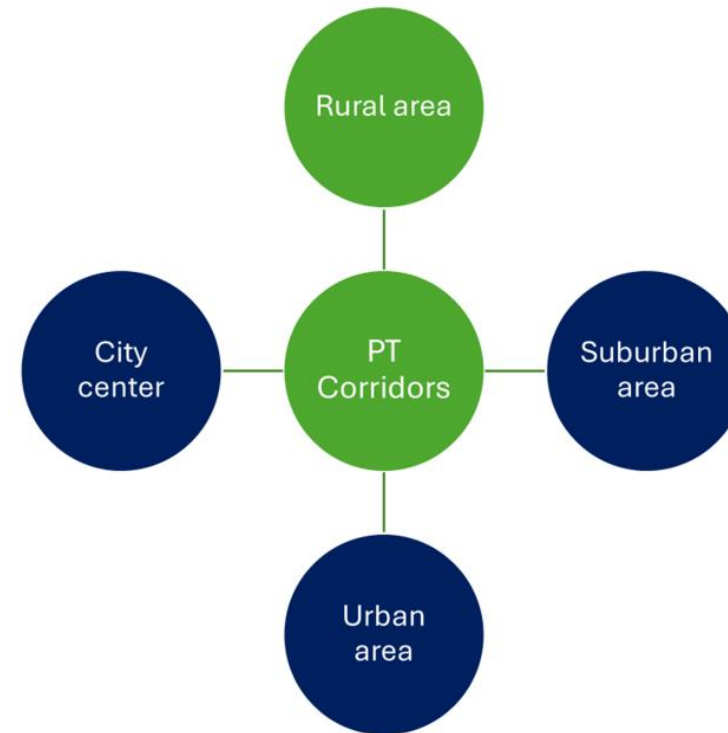


# Scope of Rural Mobility



2.

“Rural” mobility  
is everywhere  
away from the  
PT corridors

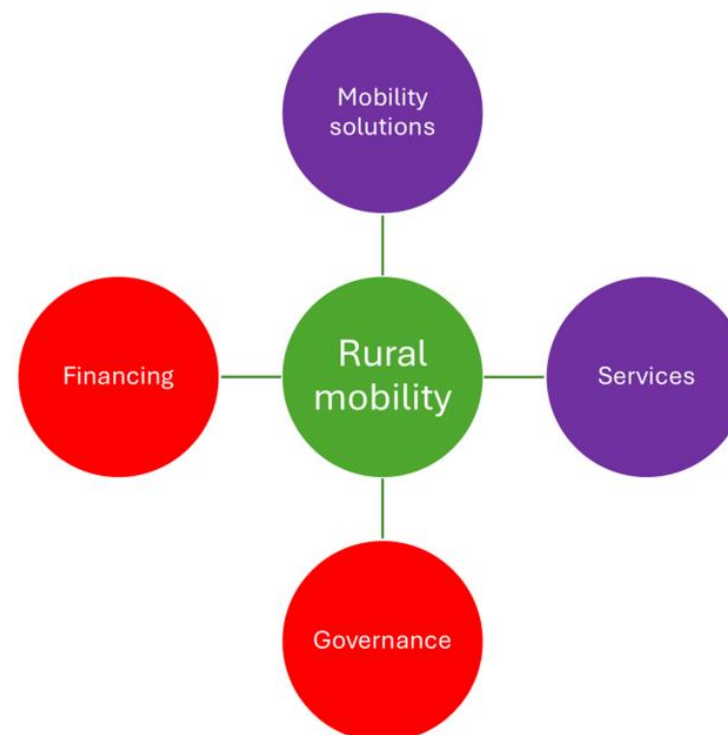


# Making Rural Mobility possible



3.

Rural mobility  
is more than  
just mobility  
solutions



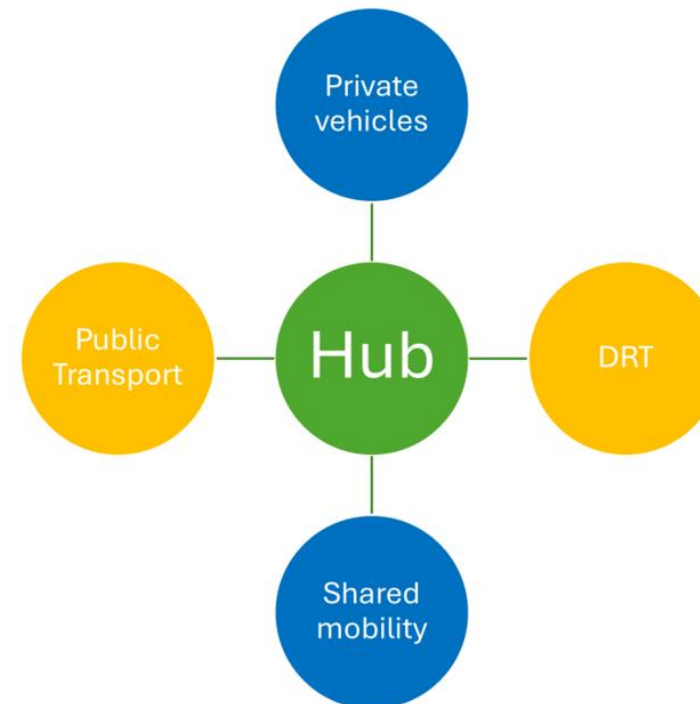


# Rural Mobility and target groups

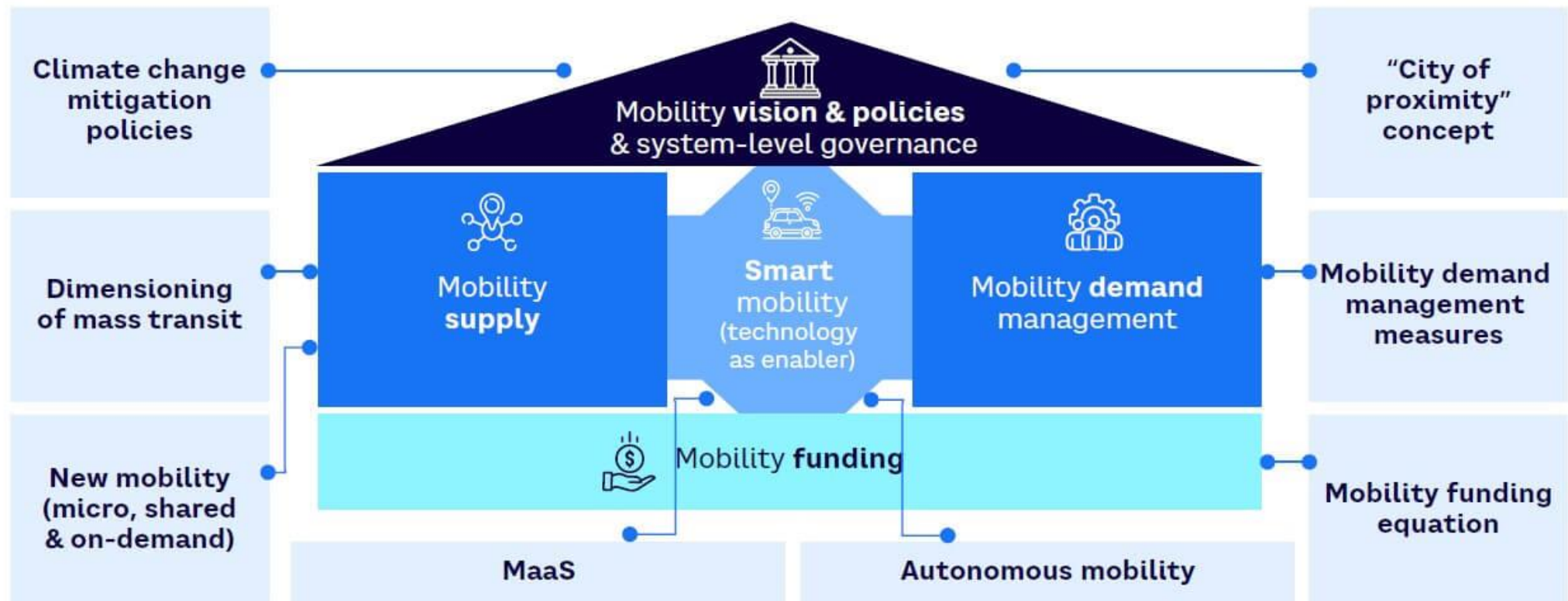


4.

Rural mobility is about “self-drive” and “been driven” (both are needed)



# Guideline Rural Mobility - Future of mobility 5.0

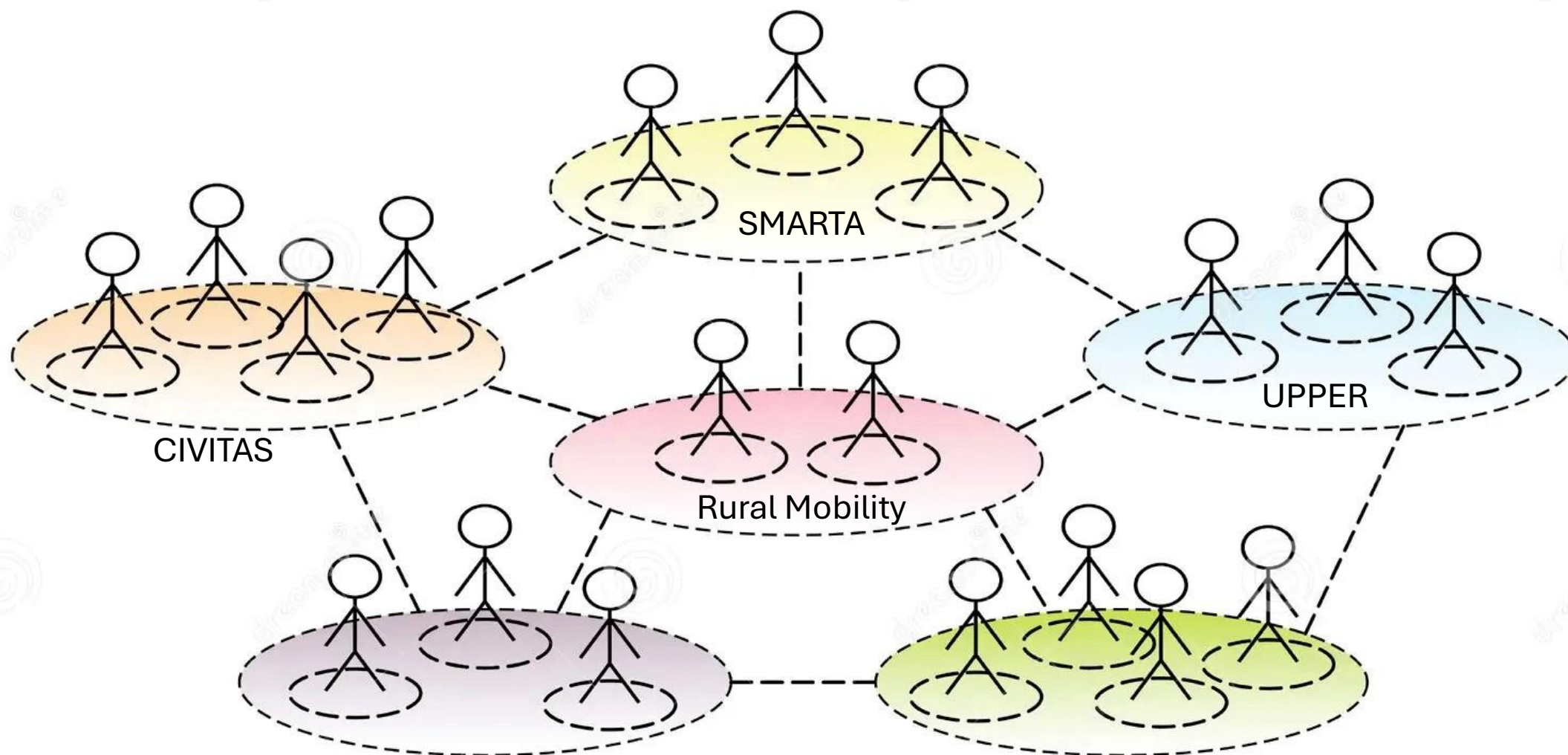


# Relations to some other EU initiatives



But there will be more projects or networks working on this topic !  
Find us or we will find you !

# Eco-System Rural Mobility





# Thank you for your attention!

## Follow our project:



<https://www.interregeurope.eu/rural-mobility>



<https://www.linkedin.com/company/rural-mobility>

## To get in touch:

Wim Dijkstra

[w.dijkstra@overijssel.nl](mailto:w.dijkstra@overijssel.nl)

Tel: +31630381260

**POLIS** | ANNUAL  
CONFERENCE  
**2024**  
CITIES AND REGIONS FOR TRANSPORT INNOVATION

**27 - 28 NOVEMBER 2024**

**KARLSRUHE (DE)**



**Baden-Württemberg  
Ministry of Transport**

