

POLIS

CITIES AND REGIONS FOR TRANSPORT INNOVATION

ANNUAL
CONFERENCE
2024

27-28 NOVEMBER 2024

KARLSRUHE (DE)



Baden-Württemberg
Ministry of Transport



Karlsruhe



Building accessibility with collective intelligence & open-source tools

09:00 AM - 11:15 AM

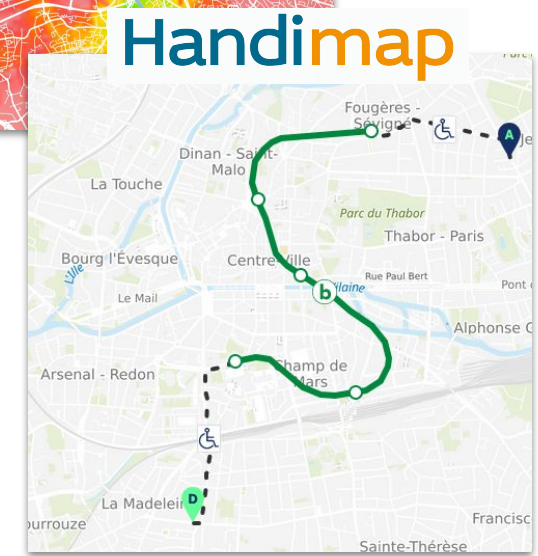
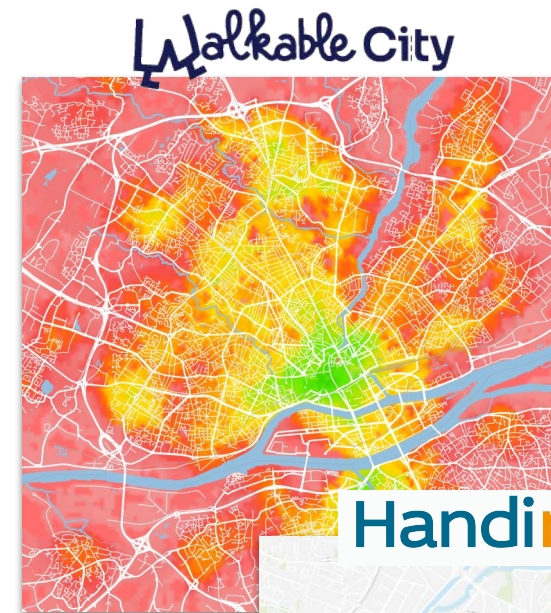
28 November 2024

Bertrand Gervais, SOMEWARE



We create digital tools to make cities more walkable and accessible for everyone

- Software to map and analyse walkability/accessibility, so that cities can reallocate street space and rethink their mobility plan with their operators
- The Handimap routing engine (Web API), so that users / travellers / citizens can easily plan customized routes based on their mobility needs



Walking & Public Transport



LEADING
THE WALKING
MOVEMENT

“INTEGRATING WALKING + PUBLIC TRANSPORT”

April 2024

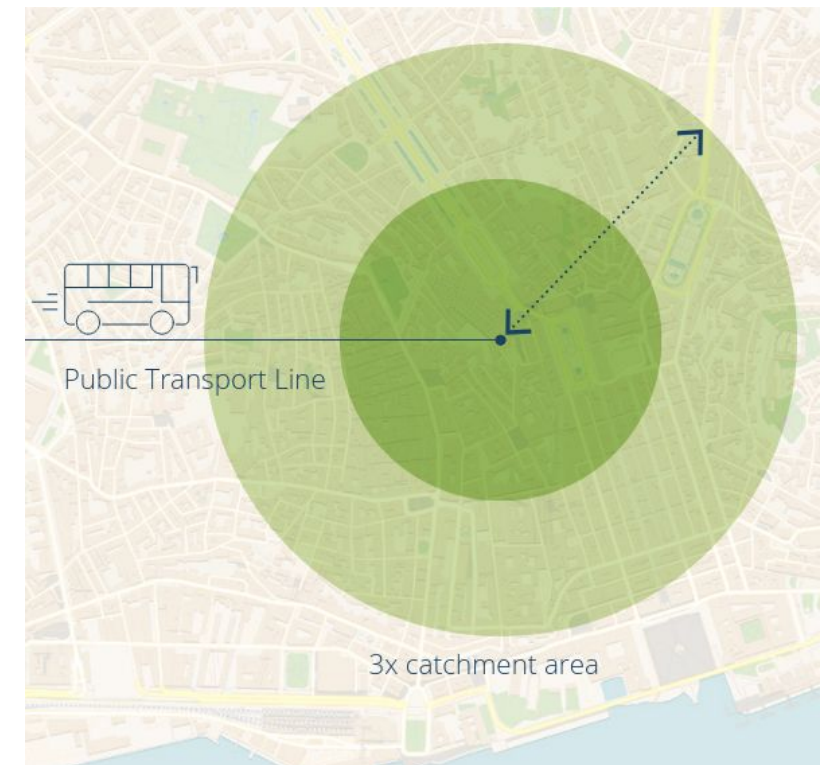
**On average
50% of public transport user’s trip time
is spent walking or waiting/transferring**



Walking & Public Transport

Walking that defines 70% of the public transport experience

People are willing to walk longer distances (x3) to access public transport in cities that offer high-quality walking experiences



Introduction to France's Accessibility Initiative for Public Transport



French Mobility Orientation Law (2019)

Make daily transportation more accessible, inclusive, and environmentally sustainable. Among the 5 key objectives:

1. **Promote New Mobility Services**, like Demand-Responsive Transport (DRT).
2. **Reduce Car Dependency**: improve access for disabled people.

Data Accessibility and MaaS

- **All local authorities must map their public transport and street accessibility** according to the NeTEx standard within a 200 m radius around main transport stops. **These data must be published on <https://transport.data.gouv.fr>**
- **French Regions must provide route planners that suggest accessible routes.**



The NeTEx Standard & European Passenger Information Accessibility Profile

NeTEx (Network Timetable Exchange): European standard for sharing public transport data (stops, routes, timetables, fares, and indoor/outdoor accessibility)

For accessibility, NeTEx can be used to describe :

- outdoor pedestrian routes (roads),
- indoor pedestrian walkways and facilities
- transport platforms
- vehicles
- facilities



3 levels of accessibility:

1. an assessment of accessibility by major disability family, based on compliance with 'wheelchair accessible' regulations...
2. the available services (toilets, ticket office, etc.)
3. a description of accessibility (routes and equipment)





Key Milestones in Accessibility Achievements

Accèslibre Mobilités

An open-source software, funded by the French Ministry of Transport

Allows local authorities to collect, edit and manage all accessibility information and export it in NeTEx



Accessibility Work Groups

Created in 2028

Gather cities, associations, companies to define standards and good practices to map accessibility and compute routes





Acceslibre Mobilites: An Open-Source Tool for Accessibility Mapping



Project started in 2022 / Funded by French Ministry of Transport

2 years to create and test a desktop / mobile software suite to map accessibility according to the NeTEx Accessibility standard

The only tool that can create and manage NeTEx Accessibility data

Now used in production in 3 urbans areas (around 3000 km mapped).



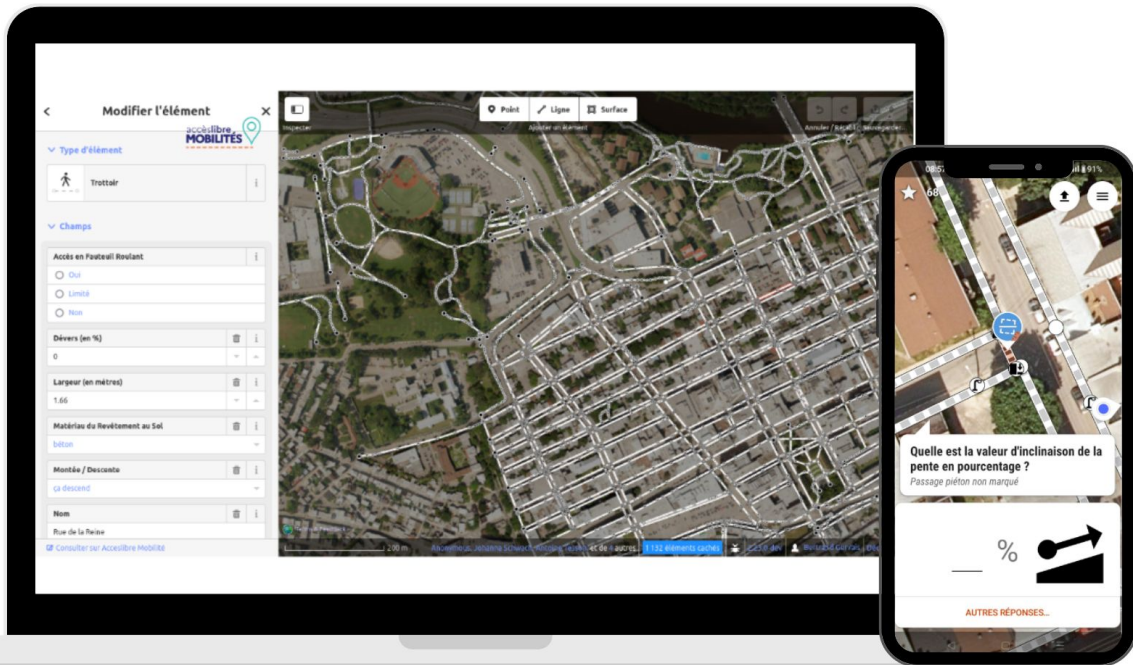
Five cities to test the tools :



This 3 cities will then use this data to improve their routing engine.

Also tested in Quebec City (Canada).

Acceslibre Mobilites: An Open-Source Tool for Accessibility Mapping



Desktop Web App

Visualize along with city data / 360° images
Create, Validate, Import / Export

Field Data collection App for Professionals

Fill all attributes
Make small fixes on geometries
Take pictures and notes

Field Data collection App for Citizens

Fill some attributes
Take pictures and notes
Intuitive UX / ergonomics

Common requirements

100% open source technology
Can be installed on premise
Multi-user
Multilingual
Data interfaces to integrate into GIS tools



Acceslibre Mobilites: An Open-Source Tool for Accessibility Mapping

Modifier l'élément

Type d'élément

Trottoir

Champs

Repère linéaire
bordure ou muret

Montée / Descente
ça monte

Couverture
à l'extérieur, en plein air

Type de Passage
en surface

Éclairage
éclairé et adapté aux déficients visuels

Matériau du Revêtement au Sol
asphalte

État du Revêtement au Sol
revêtement en bon état

Largeur (en mètres)
3

Pente (en %)
5

Dévers (en %)
6

Consultez sur Acceslibre Mobilité

Point Ligne Surface

Inspecter Ajouter un élément Annuler / Rétablir Sauvegarder...

Place de la Cantine Collège Saint-Joseph Caudan Mairie

150 m

Modifications de Julie Bouchez, Jean-Marc Morin, Léa Léauté et de 7 autres 2/23/2024 Bertrand Genin Déconnexion

Routing using NeTEx Accessibility data

Rennes Métropole (450K inhabitants)

STAR

Calculateur d'itinéraires

Départ **Aujourd'hui à 10:59**

De : 4C Avenue des Peupliers (Cesson-Sévigé)

À : Mairie - Opéra (Rennes)

10:59 Départ : Aujourd'hui
4C Avenue des Peupliers (Cesson-Sévigé)
8min de marche

11:07 Sports et Nature (Cesson-Sévigé)
Prendre le bus C6
Direction : Aéroport (Saint-Jacques-de-la-Lande)
Prochains passages : 10 min 25 min 40 min

C6

Web + Mobile integration of Handimap

Better pedestrian trips for everyone
Electric Wheelchair trips
Next year: other motor + visual impairments

NeTEx + live data : pedestrian reports, street works

~800K API calls per day / 100K trips



Future Steps for Enhanced Accessibility Across Europe

Test

AccesLibre Mobilites
in your city

Explore

The use of NeTEx
Accessibility

Share with us

Your input /
feedback to take it
to the next level

**Let's build a
community to
work on it!**





Thank you for your attention!

Bertrand Gervais

contact@someware.fr

 [someware-fr](https://www.linkedin.com/company/someware-fr)



POLIS | ANNUAL
CONFERENCE
2024
CITIES AND REGIONS FOR TRANSPORT INNOVATION

27 - 28 NOVEMBER 2024

KARLSRUHE (DE)

For more information:

www.someware.fr

<https://www.ecologie.gouv.fr/politiques-publiques/donnees-daccessibilite>



Baden-Württemberg
Ministry of Transport

