

Farewell to the car-free city!

The creation and implementation of the
Karlsruhe Public Space and Mobility Plan

POLIS Conference
28. November 2024

Leon Legeland
leon@gehlpeople.com

Roads often
account for 80%
of our public
spaces in our
cities

Green Spaces



Roads

Dual function of streets

Link



Street as a movement conduit

Place



Street as a destination

The space potentials lie in the street spaces

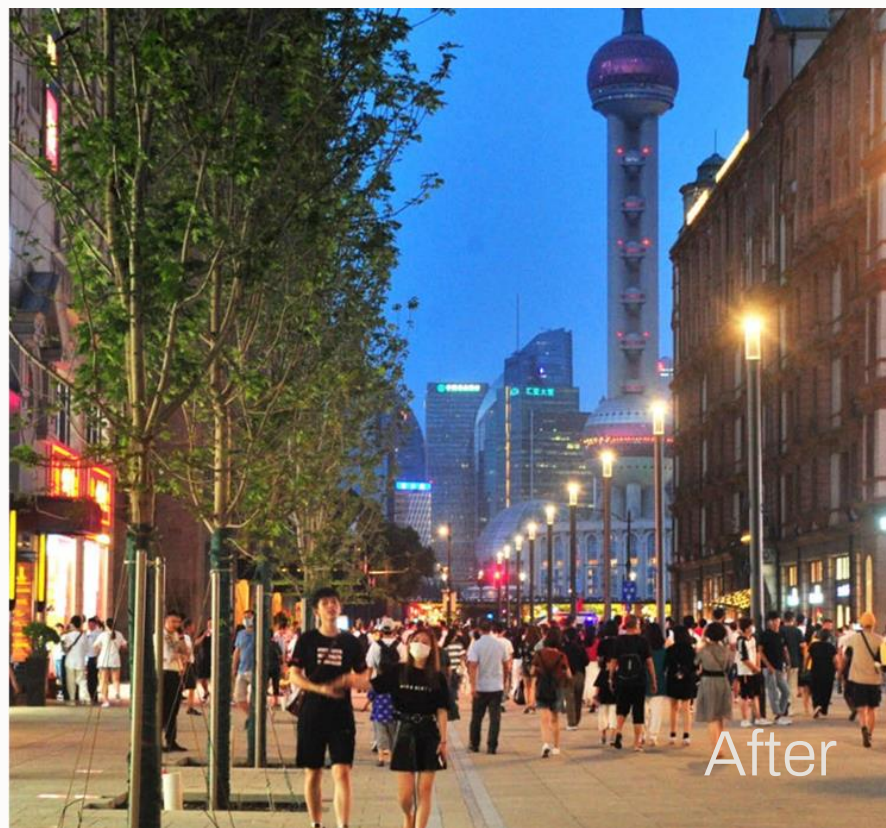
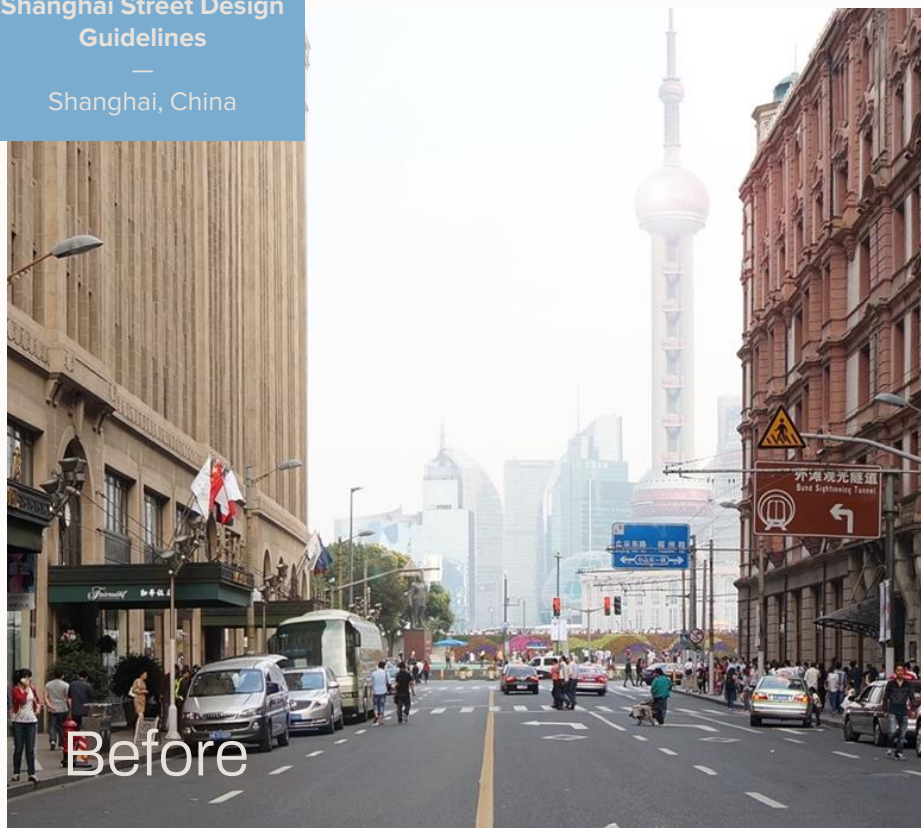
Sydney George Street
- A Spine an three
Squares

Sydney , Australien



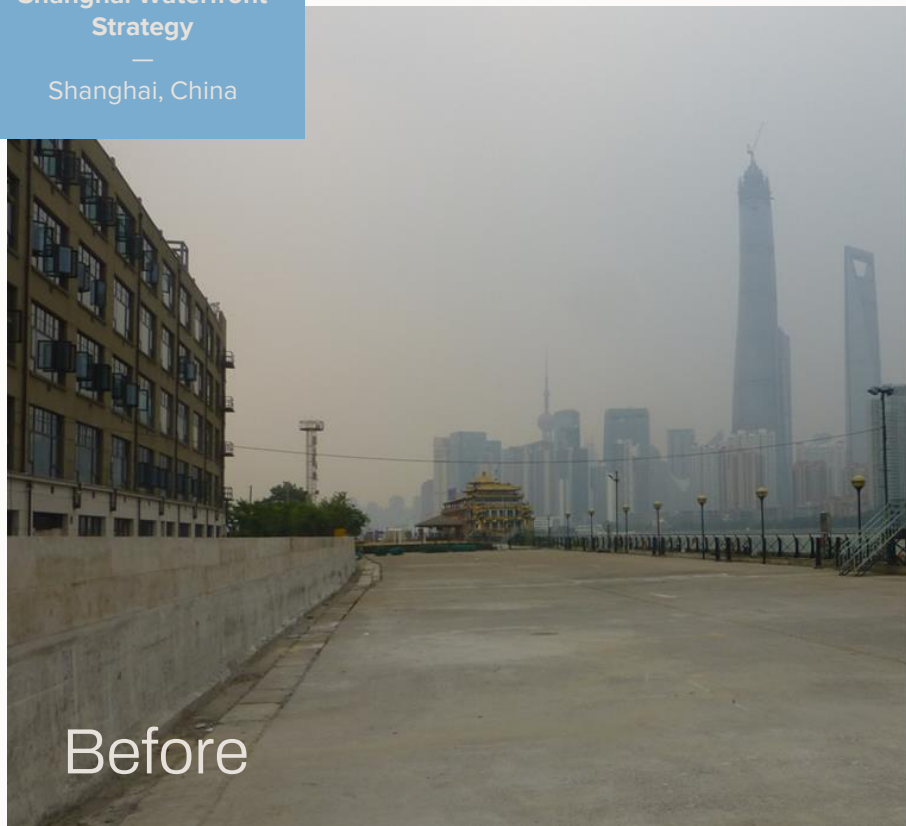
Shanghai Street Design Guidelines

—
Shanghai, China



Shanghai Waterfront Strategy

—
Shanghai, China



A global trend

mostly european



Amsterdam
*"A New Push to
Keep Cars Out"*



Oslo
"Carfree city life"



Helsinki
"Making the car unnecessary"



Paris
*"The Car-free
Revolution continues"*

...Worries, fears, resistance

Berlin

*“Berlin is for everyone.
For car drivers, too”*



UK, The 15-Minute City
*“Where Urban Planning Meets
Conspiracy Theories”*

Communication, collaboration
and political will are key!

Communication is key!



Oslo

"Open Street, free streets"

New York

*"Open Streets" &
"Vision Zero Plan"*



Copenhagen

*"Citizen panel for the
inner city"*



Munich

"Oldtown for Everyone!"



Vienna

"Together we are mobile"

“

What's in it for me?

Answer the Why!

Space for more Platz für mehr



Platz für mehr

Grün, Leben und gesunde Mobilität

Stadt Karlsruhe
Stadtplanungsamt

IQ-Leitprojekt
Öffentlicher Raum und
Mobilität Innenstadt (ÖRMI)

Gehl
ARGUS
STADT UND UMGEBUNG - MOBILITÄT UND LEBENSQUALITÄT

WEEBER + PARTNER





Space for more...



Greenery

A circular image with a green tint showing a city street with several large potted palm trees in the foreground and buildings in the background.

**Healthy
Mobility**

A circular image with a blue tint showing a busy city street with many people walking and riding bicycles.

**Public
Life**

A circular image with a yellow tint showing a group of people sitting on a bench in a public space, with buildings in the background.

Public Life

Public
Life

Legende

Wohnen und
Nachbarschaft

Quartiersleben

Stadtleben

Bedeutung des
öffentlichen
Raumes für
das öffentliche
Leben und seine
Intensität

Kulturpfad



“

Transport is too important to
leave solely to the transport
planners

Andreas Røhl,
Transport Planner and Mobility Lead at Gehl

Public space is too valuable,
it should not be left solely to
transport planners

Greenery



Lammstraße

Today



Lammstraße

Future



Lammstraße

From a grey street...



Lammstraße

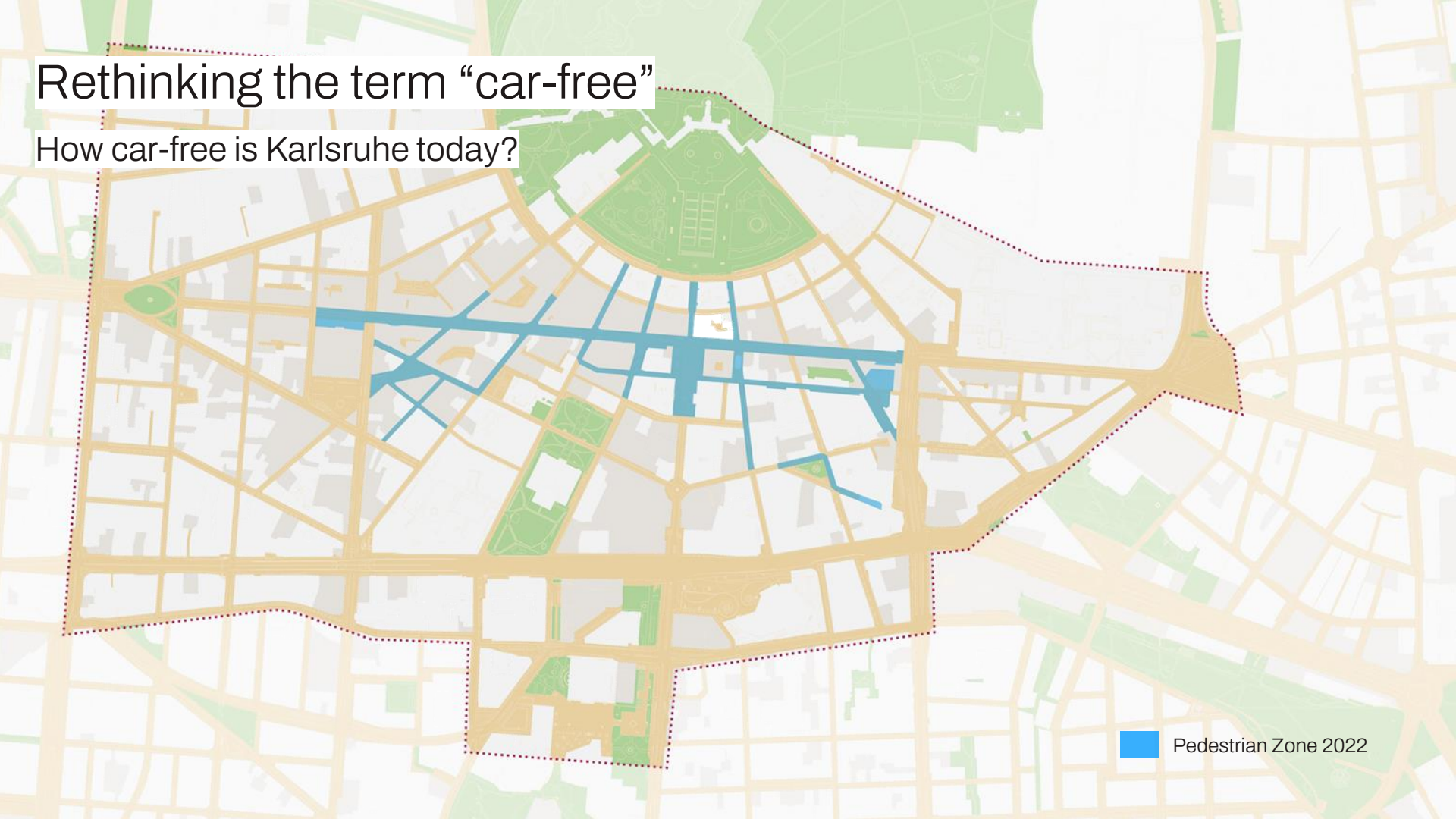
...to a green corridor.




Mobility planning has to go
hand in hand with
public space design

Rethinking the term “car-free”

How car-free is Karlsruhe today?



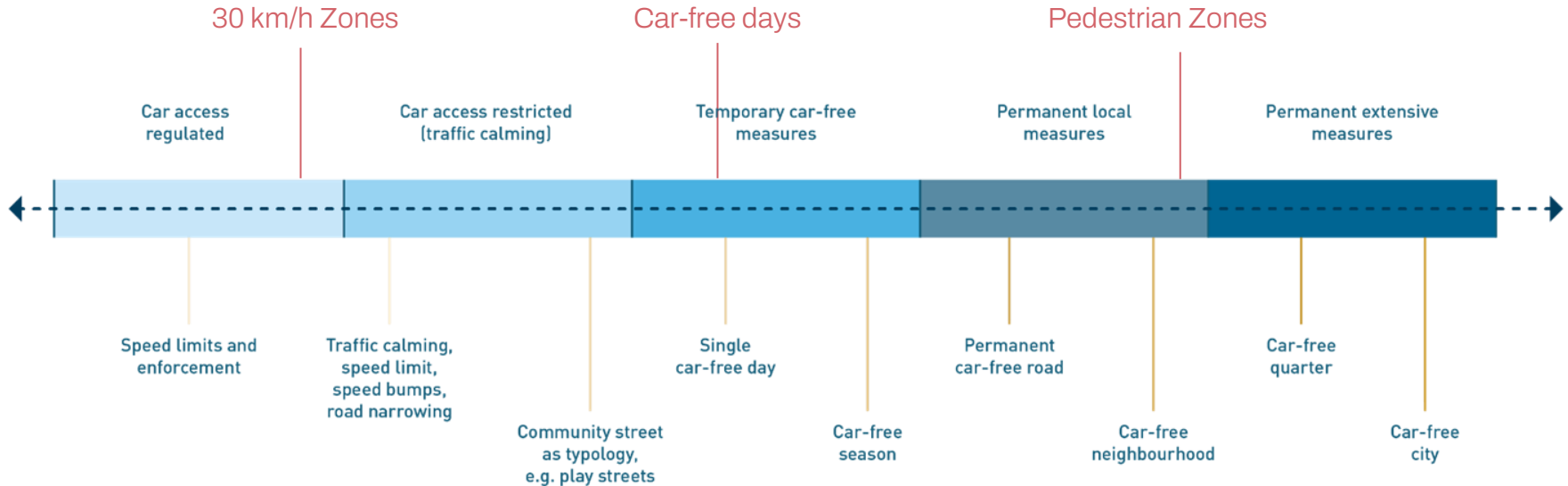
 Pedestrian Zone 2022

Spectrum of regulation of car traffic

“scale of carless-ness”

Low regulation

High regulation

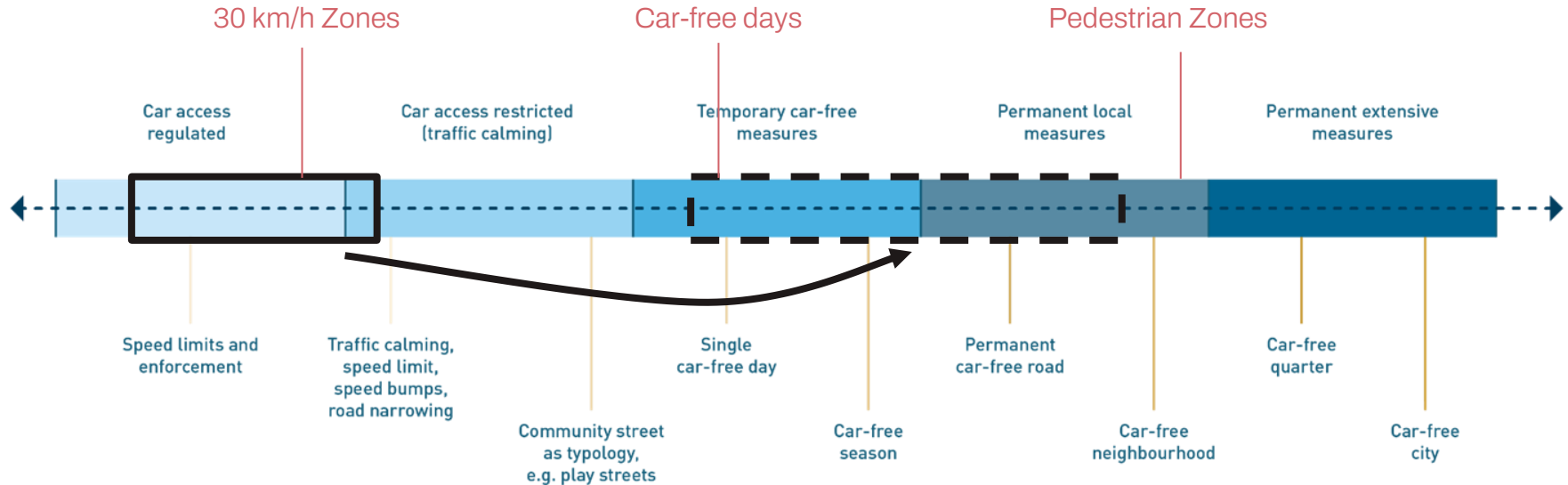


Spectrum of regulation of car traffic

“scale of carless-ness”

Low regulation

High regulation



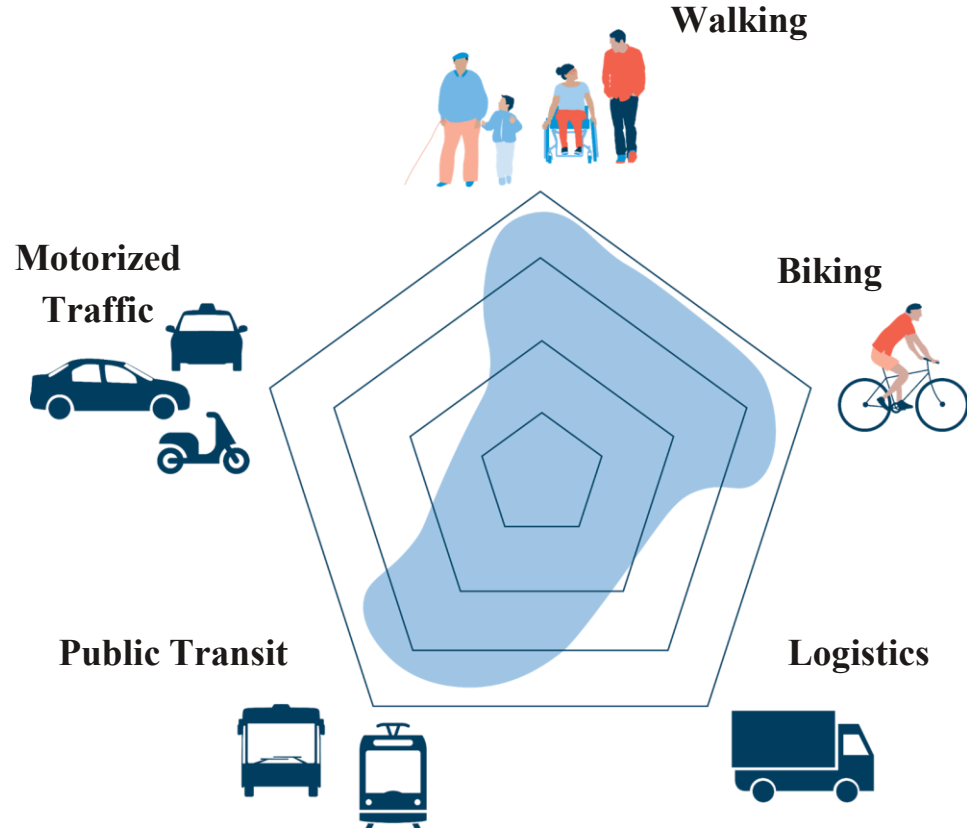
Say farewell to
the car-free city!

Defining priorities for different road users

Not every street is the same

Not all aspects of the modes of transport can be represented in the limited road space. In order to strengthen individual aspects, priorities should be defined for individual modes of transport without completely excluding others:

Network function (link),
spatial function (place).



Mobility

Healthy
Mobility

Legende

- Priorisierung des Fußverkehrs
- Priorisierung des Radverkehrs
- Nachbarschaftsstraße
- Kfz-Verkehrsflächen
- Parkhaus Kfz inkl. Zufahrten
- Langfristig: Fuß- und Radverkehrsquerung
- Routen des Busverkehrs
- Straßen- und Stadtbahn oberirdisch
- Straßen- und Stadtbahn unterirdisch
- Eingeschränkte Fahrtrichtung für Kfz
- Kfz-Flächenreduzierung
- Sperrung für Kfz in diesem Bereich
- Langfristig: Sperrung des Tunnels für Kfz-Durchgangsverkehr



Greenery

Healthy
Mobility

Public
Life



Legende

- Stadtplätze und Stadtstraßen
- Quartiersplätze und Quartiersstraßen
- Verbindungsstraßen
- Wohnstraßen
- Grüne Verbindungen
- Grünflächen
- Grüne Höfe
- Kulturelle Institutionen am Kulturpfad
- Kulturplätze
- Bildungscampus
- Radverkehrskorridore
- Synergien fördern
- Neue Verbindungen
- Parkhäuser
- Straßen- und Stadtbahnstrecken
- Kultureller und historischer Stadtkern

Measure, Test, Refine!

Make the Why
tangible and “feelable”

Passagehof

From a parking lot...
2021



Passagehof

Our Vision

2022



Passagehof

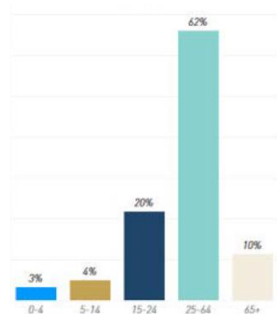
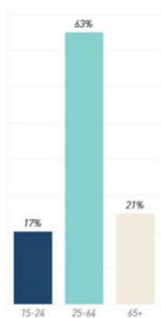
Pilot project
2022



Foto: Patrick Waldschmitt

Passagehof Evaluation

Staying activities before and during the pilot project



Evaluation with Feedback Poster and Postcards for ideas for improvements



Passagehof

Permanent
pedestrian zone
2023



Foto: Stadt Karlsruhe, Monika Müller-Gmelin

Passagehof

Temporary Art Installations 2024



Foto: Stadt Karlsruhe, Monika Müller-Gmelin

Conclusions

1. The space potential lies in the street spaces
2. Communication, collaboration and political will are key!
3. Public space is too valuable, it should not be left solely to transport planners
4. Mobility planning has to go hand in hand with public space design
5. Farewell to the car-free city!
6. Measure - Test - Refine

Danke!

POLIS Conference
28. November 2024

Leon Legeland
leon@gehlpeople.com