



Unlocking the last mile: innovation in urban freight

Nantes Metropolis strategies regarding urban freight planning

Mélanie Legat, Interface Transport

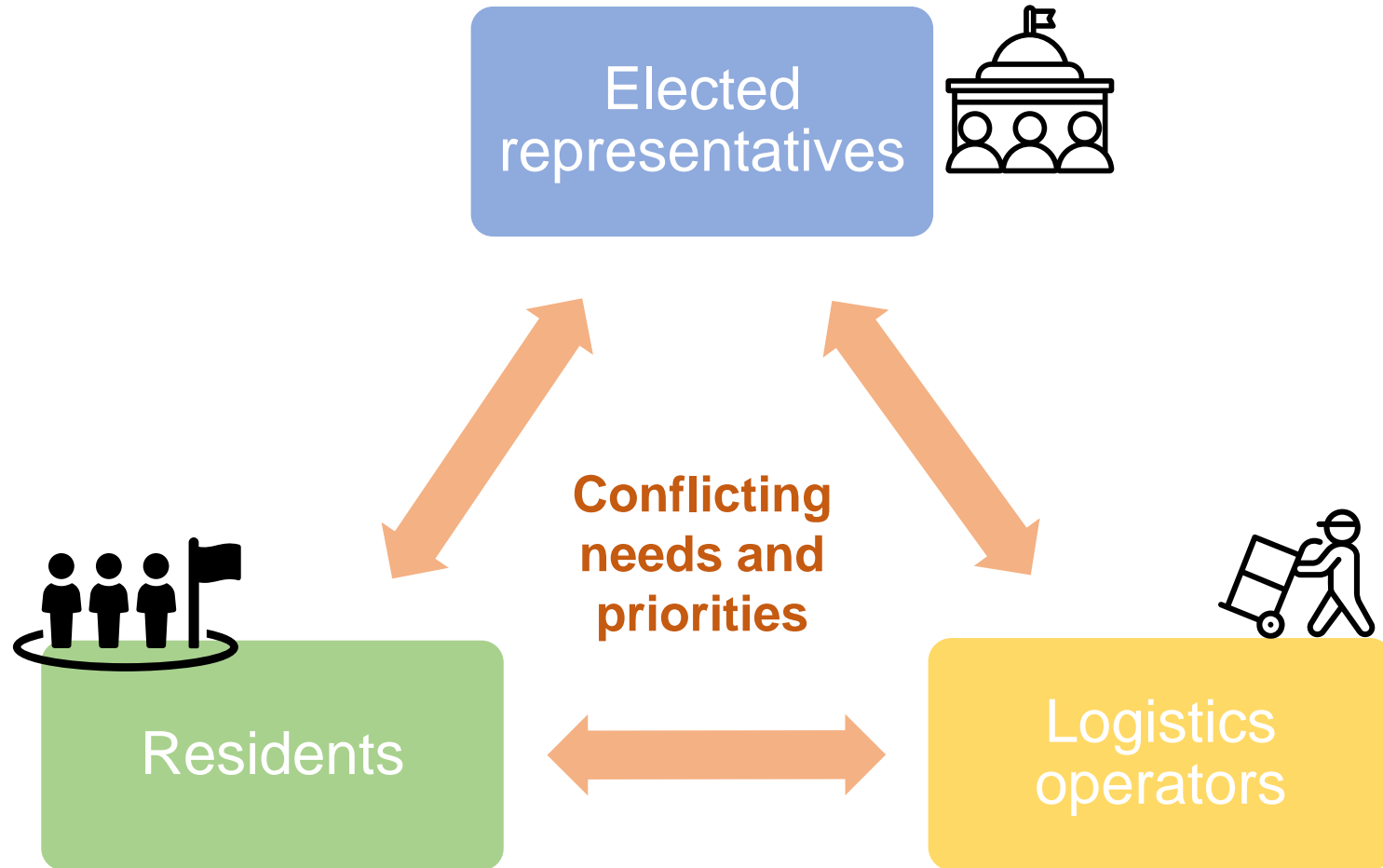
Clarissa Realì, Interface Transport



A Sustainable Urban Mobility Plan (SUMP), but what for ?

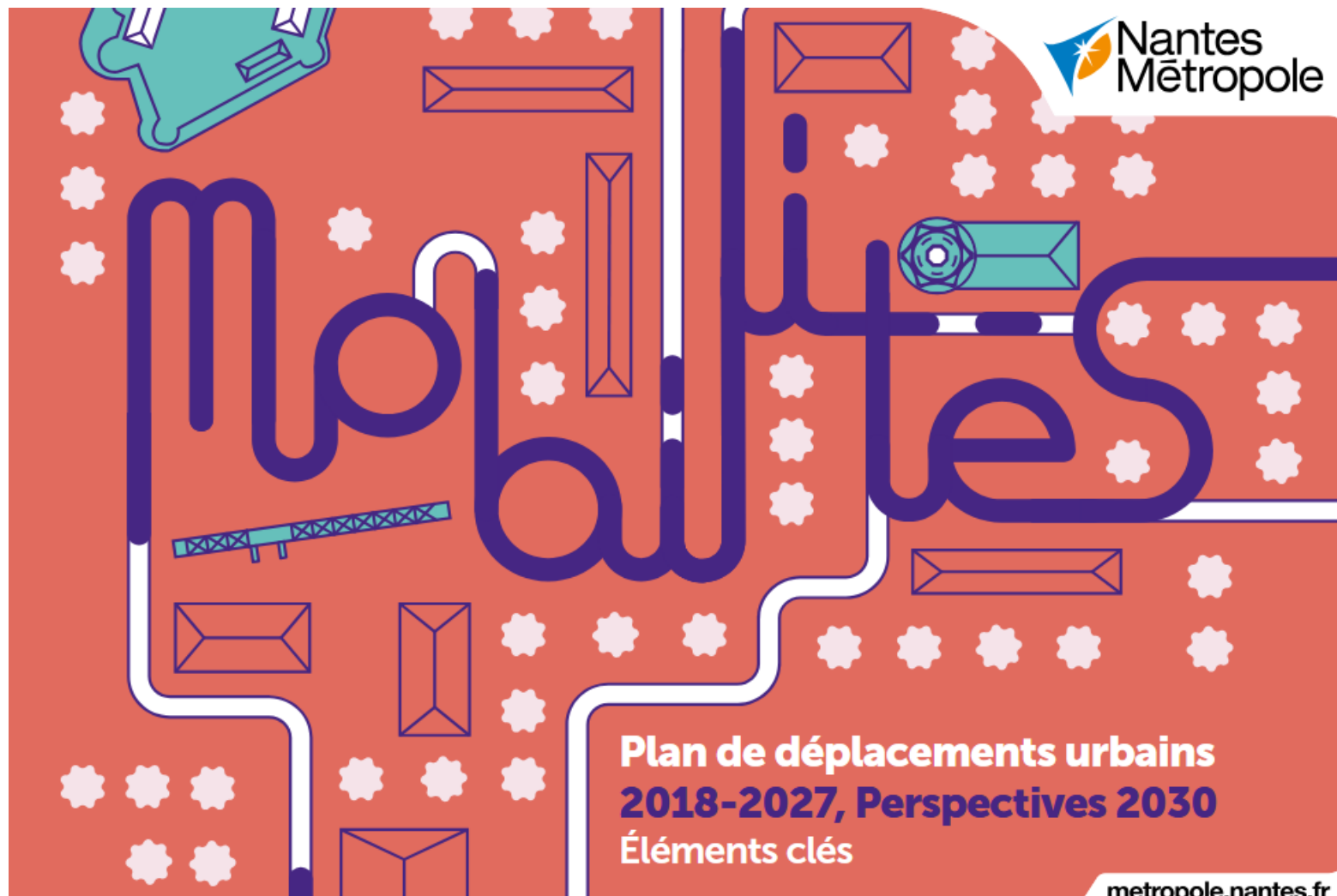


Challenges to tackle





Nantes' SUMP



SUMP's action points

- Facilitating Urban Logistics Experiments
- Anticipating Evolving Needs



© Jean Baptiste Thébaud



© Patrick Garçon

SUMP's action points

- Facilitating Urban Logistics Experiments
- Anticipating Evolving Needs
- Adapting Urban Regulations
- Integrating Urban Logistics into urban development
- Building Strong Partnerships



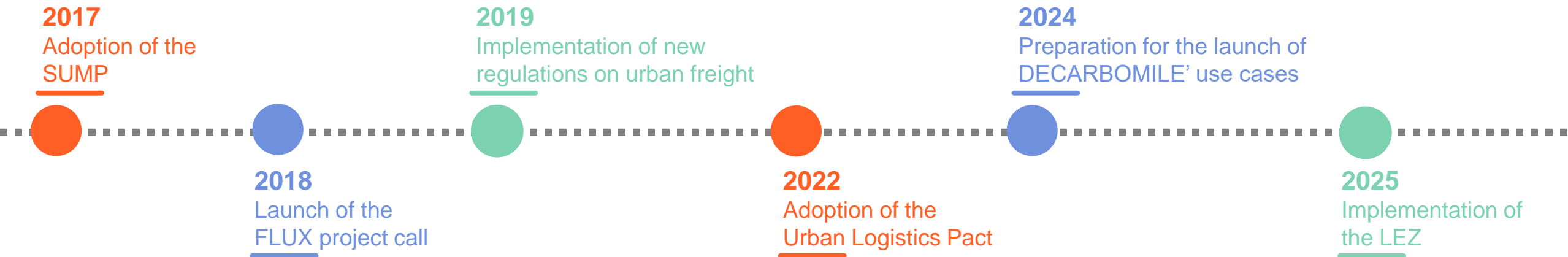
© Jean Baptiste Thébaud



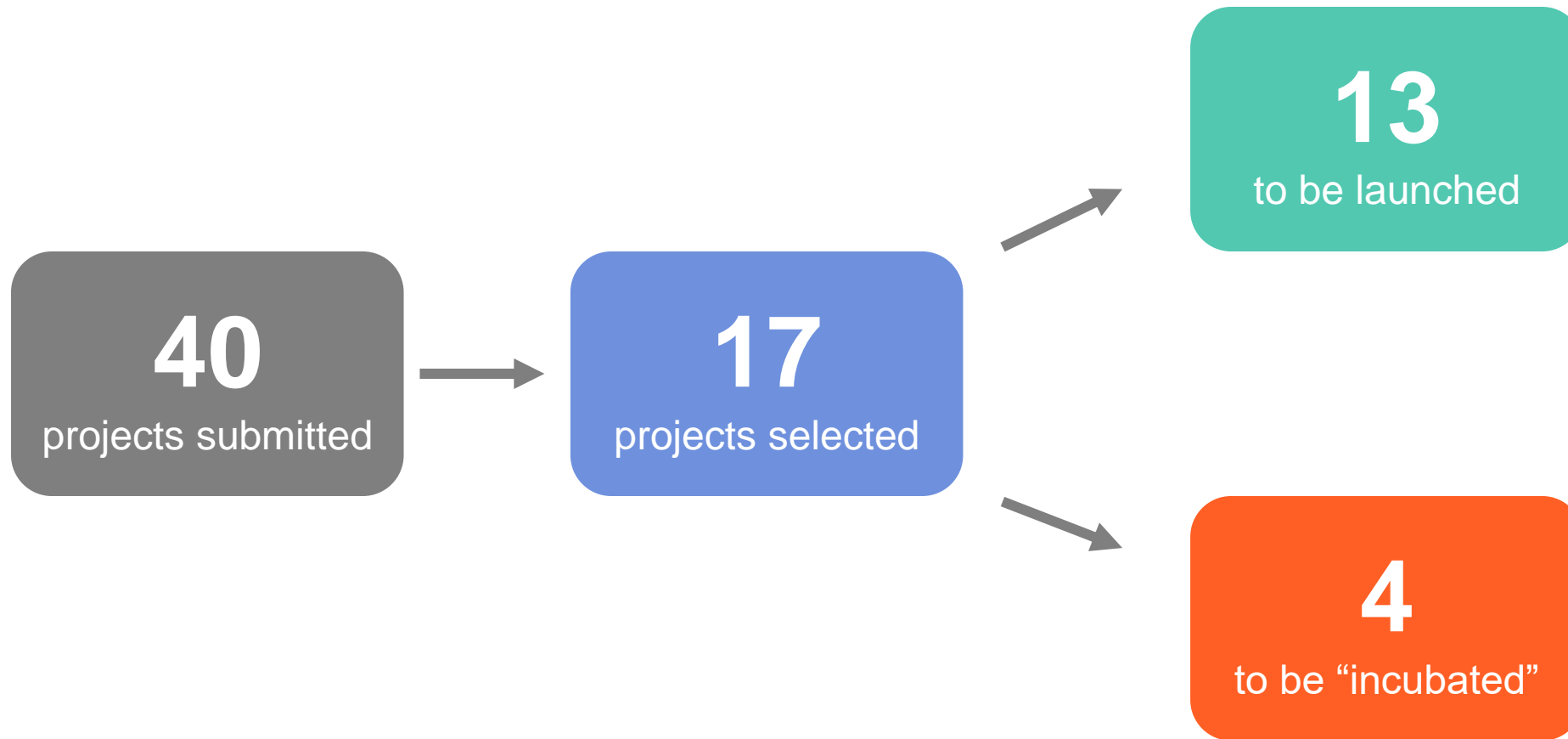
© Patrick Garçon



Planning



FLUX call for projects





Highlighting ICI Nantes, one of the most successful FLUX project



NANTES

1 material hub

in the centre of Nantes, the only one in the region

300 sqm

shared storage space

54

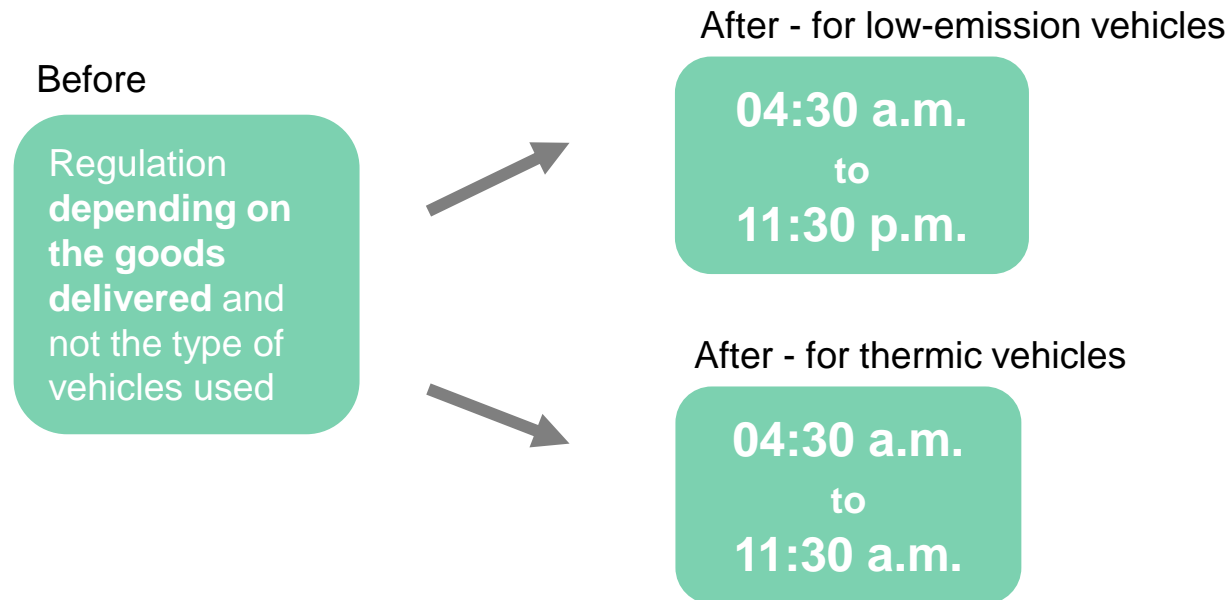
craftsmen sharing workspaces

1

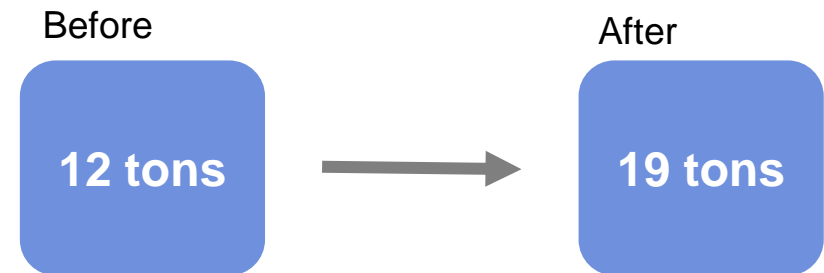
shared e-van

New regulations on urban freight

Authorized delivery times in the pedestrian and restricted areas



Authorised trucks' load capacity in the city centre





The Urban Logistics Pact



flux

Fabriquons
La logistique
Urbaine
X ensemble

LE PACTE DURABLE



The Urban Logistics Pact's commitments



**DIALOGUE
AND TRUST**



**ACTION AND
LEADERSHIP**



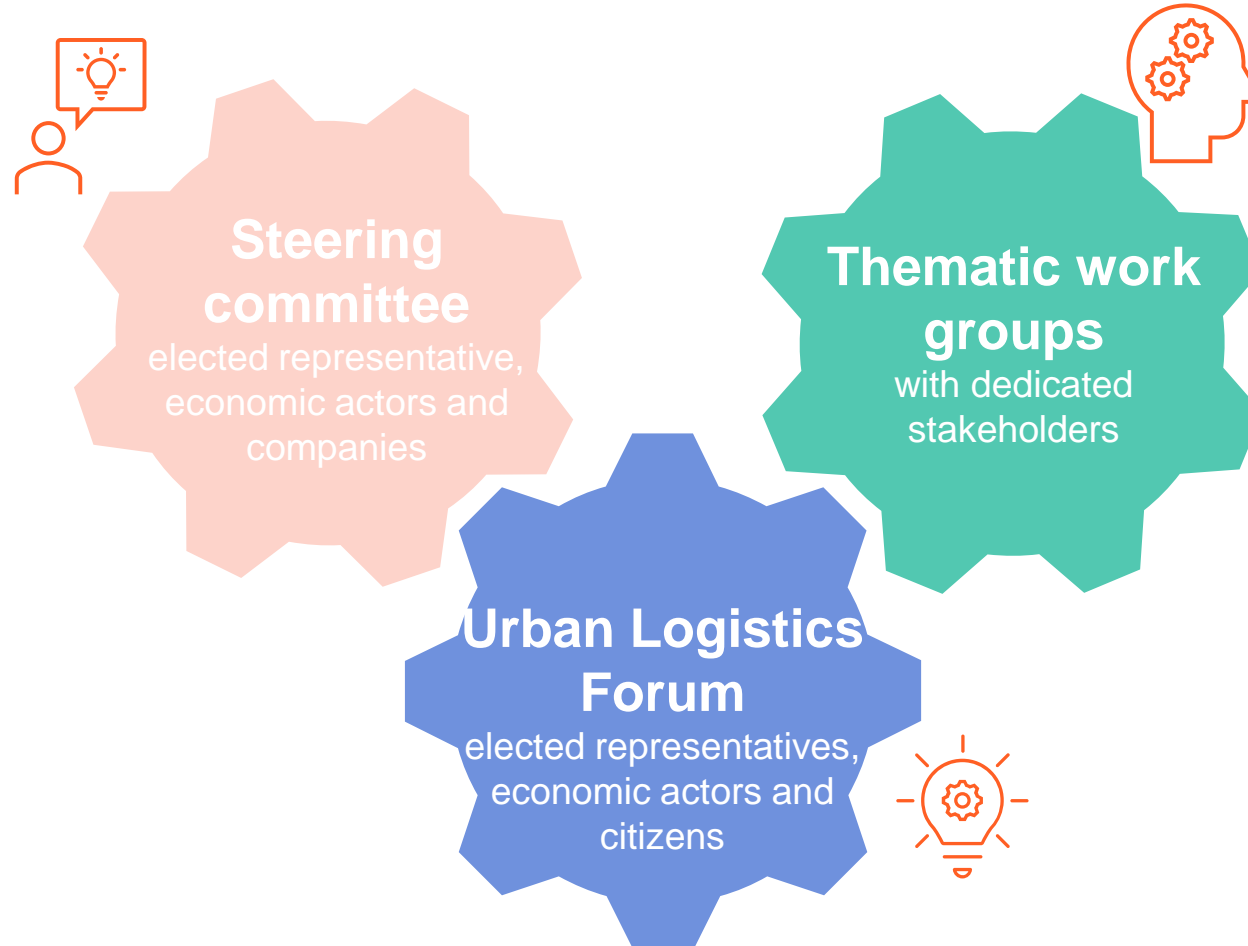
**LOCAL AND
GLOBAL**



EVALUATION



The Urban Logistics Pact's governance



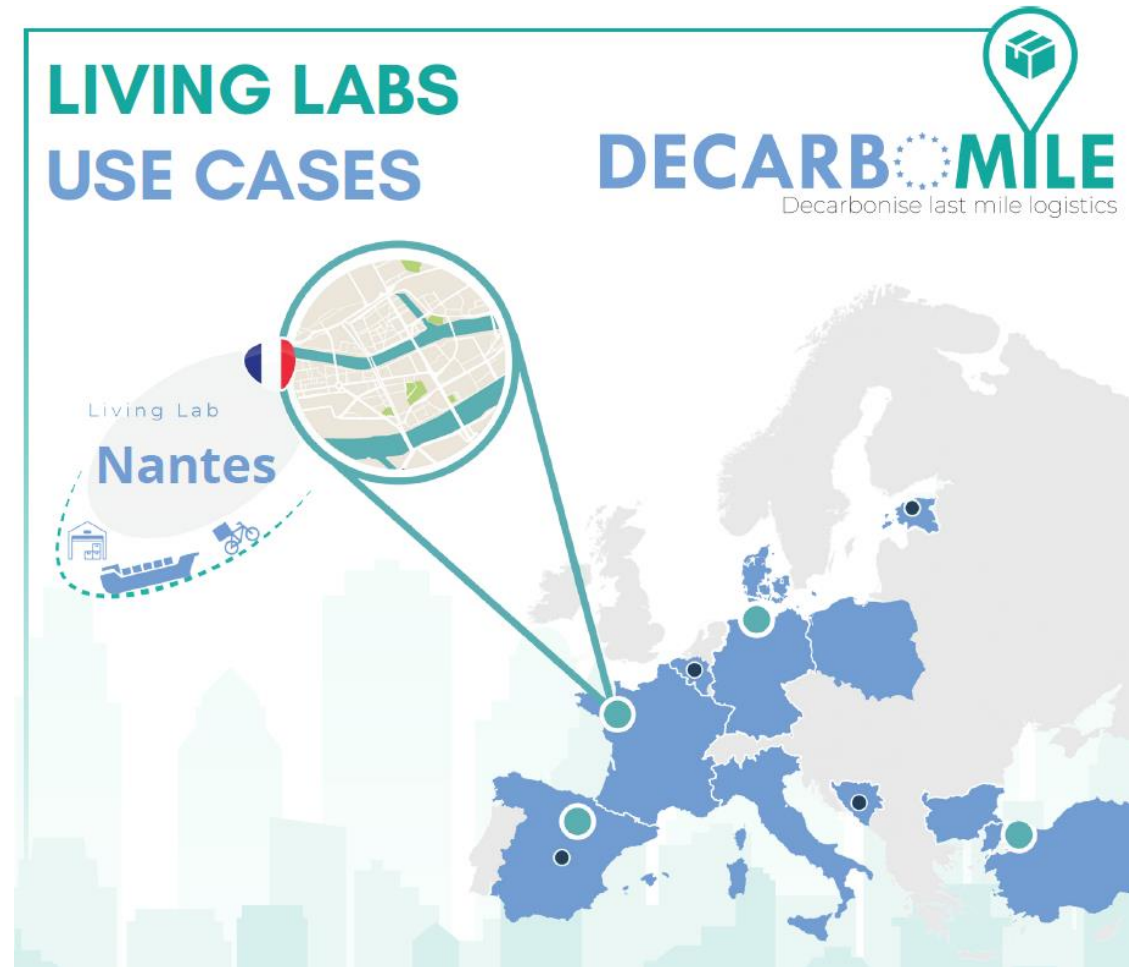


The Urban Logistics Pact's annual forum



Launching DEARBOMILE

- **31** partners
- **10** countries
- **4** Living Labs
- **4** Satellite Cities



Enhancing existing cycle-logistics operations

#1 LEVERAGING EXISTING LOGISTICS HUBS AND PROCESSES



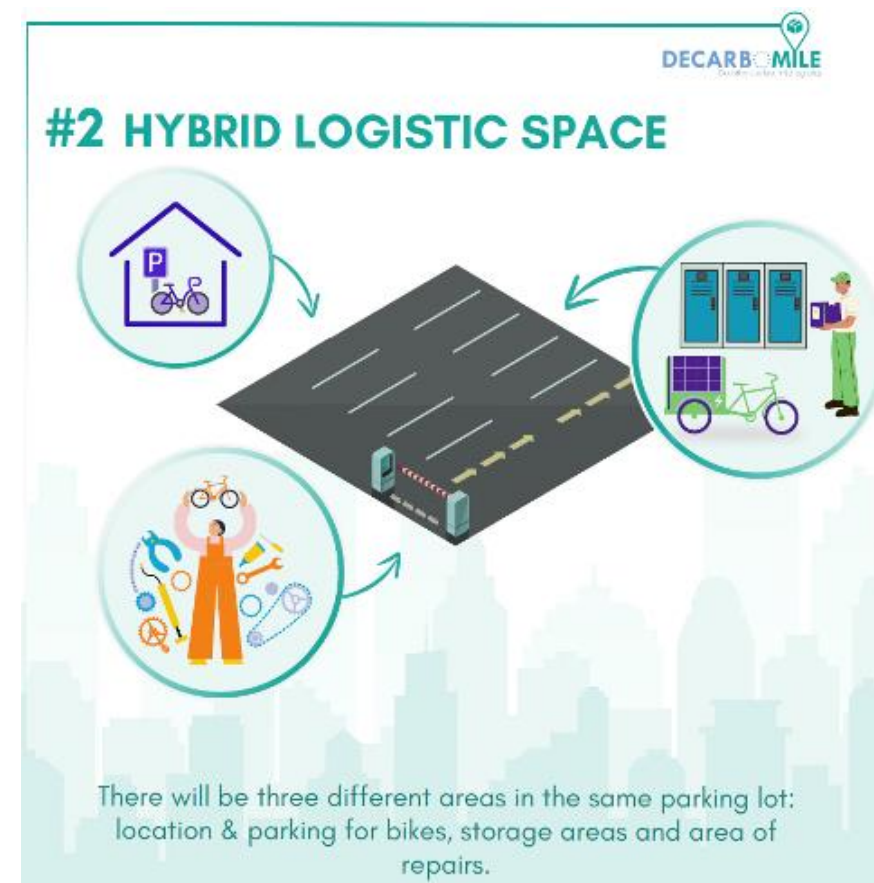
An existing hubs will be used to consolidate flows from suppliers.

#1 LEVERAGING EXISTING LOGISTICS HUBS AND PROCESSES



The Triporteurs existing hub will be used to test trackers and sensors attached to dedicated new cargo-bikes (including the TricyLift from Fleximodal).

Implementing a mobility station in the city centre

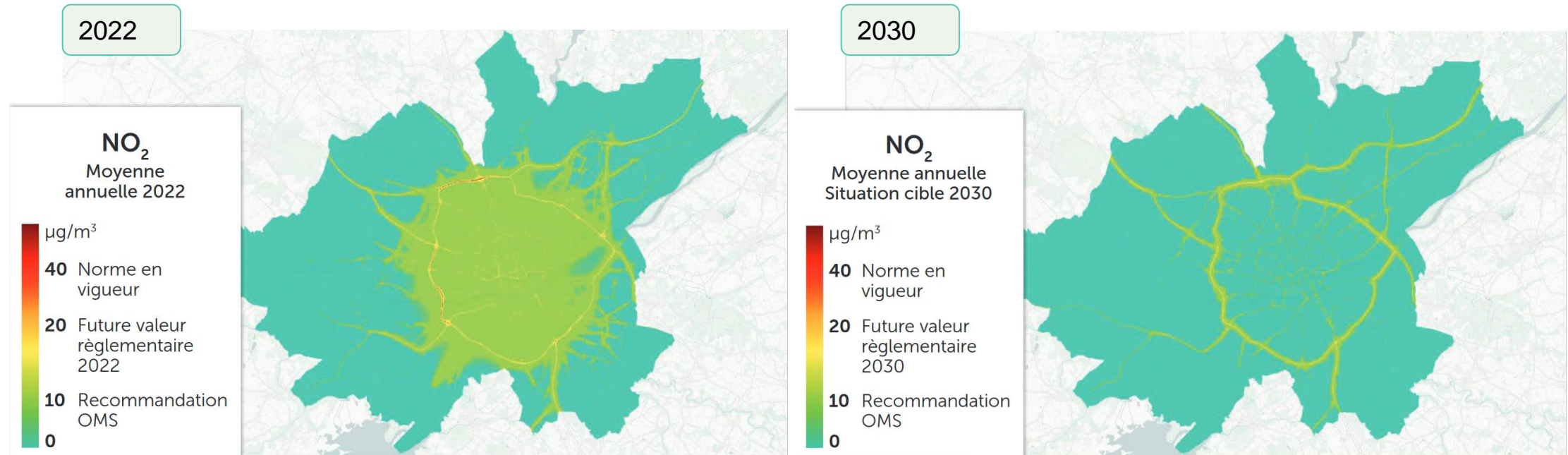


Testing an innovative micro consolidation centre



Nantes' Low Emission Zone

Objective of decreasing the amount of NO_2 in the metropolitan area of Nantes



A background photograph of a city street scene. In the foreground, a white tram with green accents is stopped at a crosswalk. Three cyclists are riding past the tram: one in a teal shirt and white helmet, one in a red shirt, and one in a dark shirt riding a cargo bike with a large white delivery box. To the right, a delivery person is also on a cargo bike with a large white box. In the background, there are trees, a traffic light, and a signpost with directions to 'l'Érdre', 'Musée d'arts de Nantes', and 'Rond-point'. A sign for 'PIÉTONS PRIORITAIRES' is also visible.

Urban logistics, how can we go even further?