



PARKPAD
PARKING POLICY AUDIT

**The parking audit tool for Small
and Medium Sized cities**

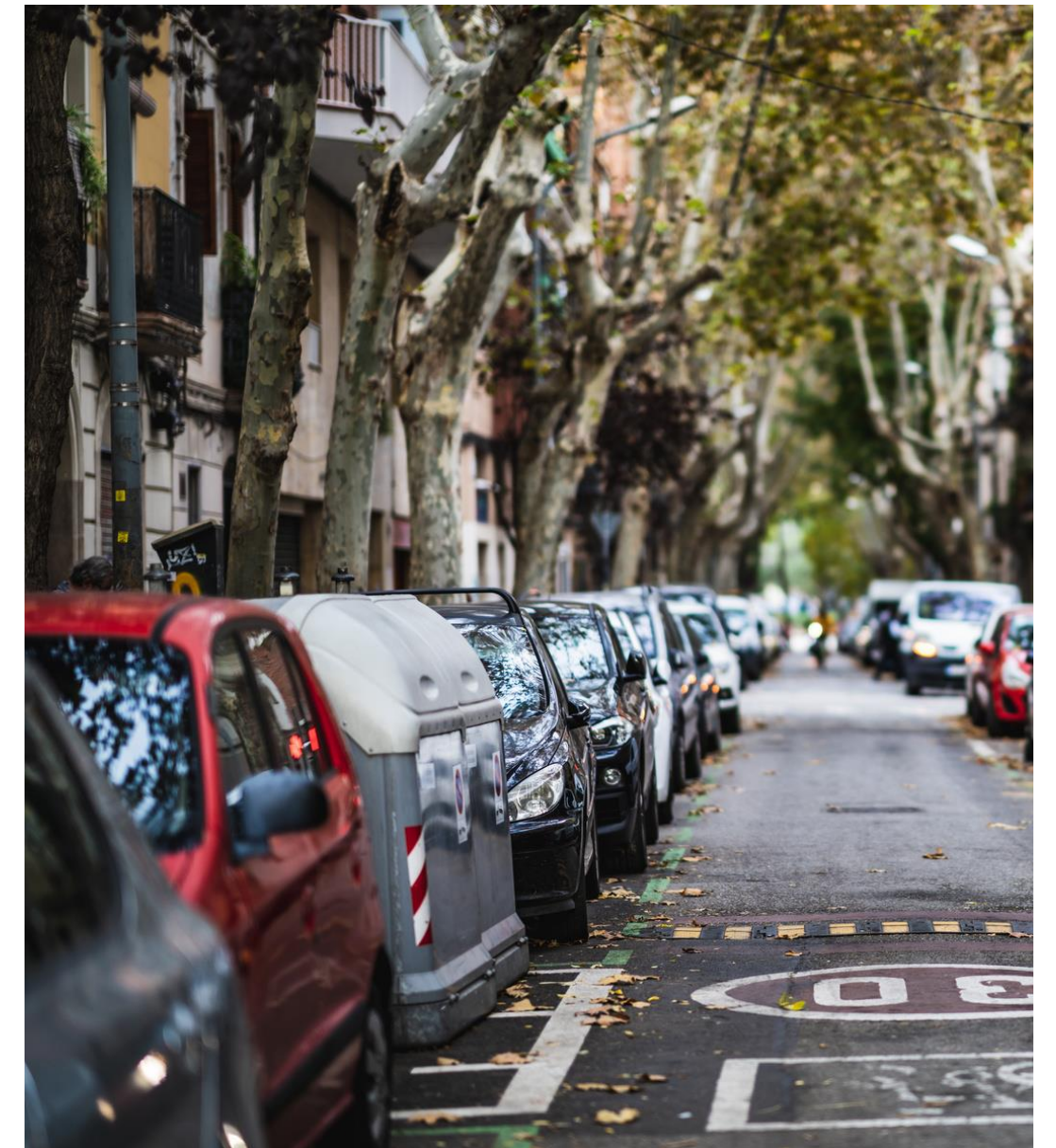
Glenn Godin



SETTING PEOPLE IN MOTION



Parked cars are everywhere



Meanwhile...

PARKING CONTINUES TO POSE CHALLENGES



Every car trip starts and ends at a parking spot



Parking space is not free





PARKING IS A KEY DRIVER OF SUSTAINABLE URBAN MOBILITY

- quality of life
- health
- environment
- economic development
- social inclusion
- road safety
- accessibility
- ...



Parking management as a multi-purpose tool

- balance parking demand and supply
- influence people's travel behaviour
- put sustainable urban mobility into practice





PARKPAD

PARKING POLICY AUDIT



PARKPAD'S BUILDING BLOCKS

1

SURVEY

Self-assessment exercise to capture status of current parking policy

2

ROUND TABLE DISCUSSIONS

Building consensus, match-making and aligning with SUMP

3

FINAL REPORT

Action Plan to guide a city's future parking actions and activities

A unique audit

- comprehensive quality management
- support for SUMP
- co-creative audit process with stakeholder involvement and consensus-building
- part of a larger ParkPAD Community
- guided by a ParkPAD auditor who understands local language and context



How it started...

DEVELOPED WITHIN PARK4SUMP (2018-2022)



Park4SUMP

- EU Horizon 2020 Urban Mobility Innovation Action
- 22 partners: 16 cities and 6 expert organisations
- ParkPAD was used in the project and in 10 additional cities across Europe



On the market

SINCE 2023



The background image shows a vibrant urban park scene. On the left, a prominent modern building with a curved facade and horizontal bands of windows stands tall. In the foreground, several people, including children and an adult, are engaged in outdoor exercise using a series of blue and red stationary bike-like equipment on a blue mat. The park is lush with green grass and young trees. In the background, a mix of architectural styles is visible, including a tall white skyscraper and a brick building with a green dome. The sky is clear and blue.

PARKPAD IN ACTION TODAY

NXTLVL Interreg programme

- 28 cities and towns in the Czech Republic, Germany, Hungary, Italy, Poland, Slovakia and Slovenia

Baden-Württemberg

- Kehl, Heidelberg, Baden-Baden

Flanders

- 8 cities and towns, including Genk

WINGRIBS
TAKEAWAY & DELIVERY



PARKPAD

PARKING POLICY AUDIT

**Your turn to prepare your city
for the future of urban parking!**





parkpad@mobi21.be
www.parkpad.eu



Patrick Auwerx

patrick.auwerx@mobi21.be



Glenn Godin

glenn.godin@mobi21.be



Joeri de Visser

joeri.devisser@mobi21.be

NXTLVL

TOM RYE (UIRS)
Tom.rye@himolde.no

Interreg
CENTRAL EUROPE



Co-funded by
the European Union



NXTLVL Parking

GENERAL IDEA OF NXTLVL PARKING PROJECT

KEY CHALLENGE

Promoting and ensuring efficient, greener and sustainable urban mobility

PROJECT OBJECTIVES AND CHANGES

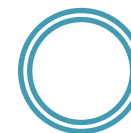
Wider use of parking management



Improving the provision of sustainable alternatives, and more livable environments



Reducing car use in CE functional urban areas



OUTPUTS AND SOLUTIONS

- ✓ ParkPAD audits done in all partner cities and pilot parking projects implemented in project lifetime (with action plan for later).
- ✓ ParkPAD tool itself will be improved based on experience from project.
- ✓ Guidance documents in all partner languages and national & transnational trainings transfer results to interested followers free of charge.

Consortium



COUNTRIES & REGIONS

AUSTRIA

Steiermark

CZECHIA

Jihovýchod | Střední Morava

GERMANY

Mecklenburg-Vorpommern

HUNGARY

Budapest

ITALY

Provincia Autonoma di Bolzano/Bozen

POLAND

Małopolskie

SLOVAKIA

Stredné Slovensko

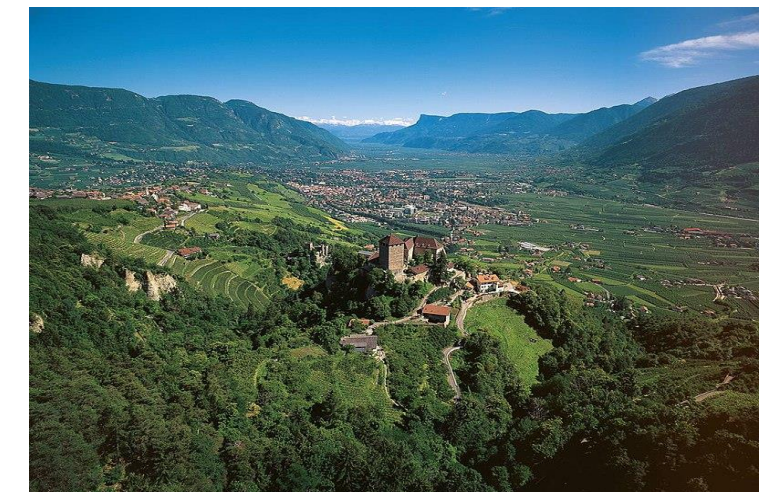
SLOVENIA

Vzhodna Slovenija | Zahodna Slovenija



Consortium Partners' cities/regions

- Žilina (SK)
- Olomouc (CZ)
- Ferencvaros (Municipality of the 9th District of Budapest) (HU)
- Ljutomer (SI)
- Rostok (DE)
- Autonomous Province of Bozen/Bolzano - South Tyrol (IT)
- Also Ministries from PL, SK, SI, CZ



Special mention to the prime movers of the project (and originators of ParkPAD together with DIFU, M21 and ENU)

Robert Pressl rpressl@outlook.com



Claus Koellinger koellinger@vision5.at



Baden - Württemberg

MARTINA HERTEL (DIFU)



Baden-Württemberg



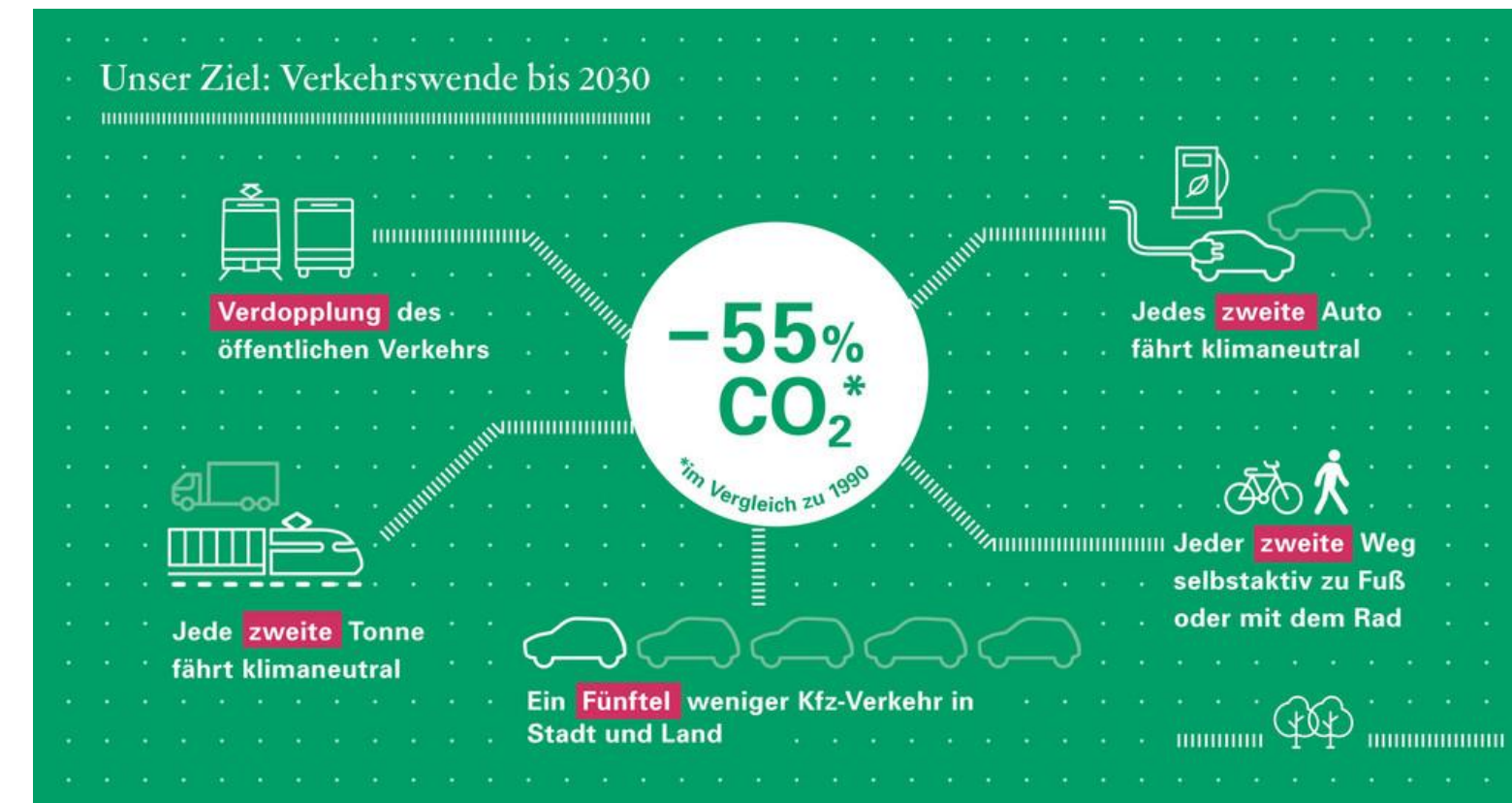
nvbw

Nahverkehrsgesellschaft
Baden-Württemberg mbH



ParkPAD and Climate protection

- Due to the need that transport sector has to lower its CO2 emissions, a strategic parking policy plays a central role
 - Almost 7 million cars in Baden-Württemberg are responsible for high CO2 emissions and traffic congestion
 - Strong competition for public space and uneven utilisation of public and private parking facilities
 - Increasing space requirements for pedestrian and cyclists, car sharing, e-charging stations, public transport and green or open space areas
- Expanding the supply (PULL measures) is not enough to achieve the climate targets. Restrictive PUSH measures (pricing + reduction of parking space) are necessary.
- Parking management has to be strategically implemented and belongs as an instrument in the kit of climate-friendly transport planning



Source: Ministry for transportation Baden Württemberg (2023)

Participating cities in Baden-Württemberg



Baden-Baden

Ca. 55.000 inhabitants

Consensus meeting: 18.04.2023

Action plan meeting: 27.06.2023



Kehl

Ca. 35.000 inhabitants

Consensus meeting: 20.04.2023

Action plan meeting: 21.06.2023



Heidelberg

Ca. 160.000 inhabitants

Consensus meeting: 16.05.2023

Action plan meeting: 26.06.2023

Action plan meeting in Heidelberg



ParkPAD-Maßnahmensteckbrief Nr. 1 – Integriertes Parkraummanagementkonzept

MAßNAHMENBESCHREIBUNG
Wie lässt sich die Maßnahme in wenigen Sätzen beschreiben? In welche Bereiche gliedert sich die Maßnahme? Was sind die Inhalte?

WAS?

IDEEN UND VORSCHLÄGE
Wie lässt sich die Maßnahme konkret umsetzen? Welche Ideen, Gedanken, Vorschläge und Hinweise gibt es bereits?

TEAM
Welche Personen oder Institutionen sind für die Umsetzung der Maßnahme verantwortlich? Welche werden?

MIT WEM?

ZWECK UND ZIELE
Warum ist die Maßnahme wichtig? Welche zentrale Ziele werden durch die Umsetzung verfolgt?

WARUM?

RESSOURCEN
Welche Arten von Ressourcen benötigen wir? (Know How, Fähigkeiten, Daten, Technik, Strukturen, Finanzmittel, ...)

Priorität der Maßnahme
Welche Priorität hat diese Maßnahme (niedrig, mittel, hoch)

WIE?

CHANCEN
Welche Umstände spielen der Maßnahme in die Karten?

RISIKEN
Welche Risiken stehen dem Erfolg der Maßnahme entgegen?

Zeithorizont für die Umsetzung der Maßnahme
Welche Aspekte der Maßnahmen können wie rasch umgesetzt werden?

Heidelberg **PARKPAD** **Kompetenznetz KLIMA MOBIL**

Handwritten notes on the board include:
 - Information: - Daten zu Umgebungscharakteristika, - Flächen / Stellplätze, - Handlungsfelder für die Maßnahme, - Ausdehnung des Bereichs
 - Steuerung: - Anlaufphase, - Zeitplan, - Risiko
 - Berücksichtigung: - digital, - Barrierefreiheit, - Integration in die Planung
 - P+Z aufbauen der Bestandsfläche
 - Flächenstruktur: Innen- / Außenbereich, - Barrierefreiheit, - Barrierefreiheit, - Barrierefreiheit, - Barrierefreiheit
 - Nutzung: - Kleinstflächen, - Kleinstflächen, - Kleinstflächen, - Kleinstflächen
 - Attraktives Angebot: - Attraktivität, - Attraktivität, - Attraktivität
 - Team: - Experten, - Experten, - Experten, - Experten
 - Ressourcen: - Know How, - Know How, - Know How, - Know How
 - Chancen: - Einzigartiges, - Einzigartiges, - Einzigartiges, - Einzigartiges
 - Risiken: - Populismus, - Populismus, - Populismus, - Populismus
 - Zeithorizont: - Kurzfristig, - Kurzfristig, - Kurzfristig, - Kurzfristig
 - WIE?: - Was ist, - Was ist, - Was ist, - Was ist
 - Handwritten notes at the bottom: - Verknüpfung Kontrolle, - Verknüpfung mit kommunalem Strategie

Action plan meeting in Baden-Baden



Kompetenznetz
KLIMA MOBIL

4 Runden à 20 Min

- Welches **Niveau** haben Sie bei den Fragen gewählt und **warum**?
- Welche **Ideen** haben Sie zur Verbesserung des **Niveaus**?

Bitte notieren Sie die Antworten in Stichpunkten auf den Karten

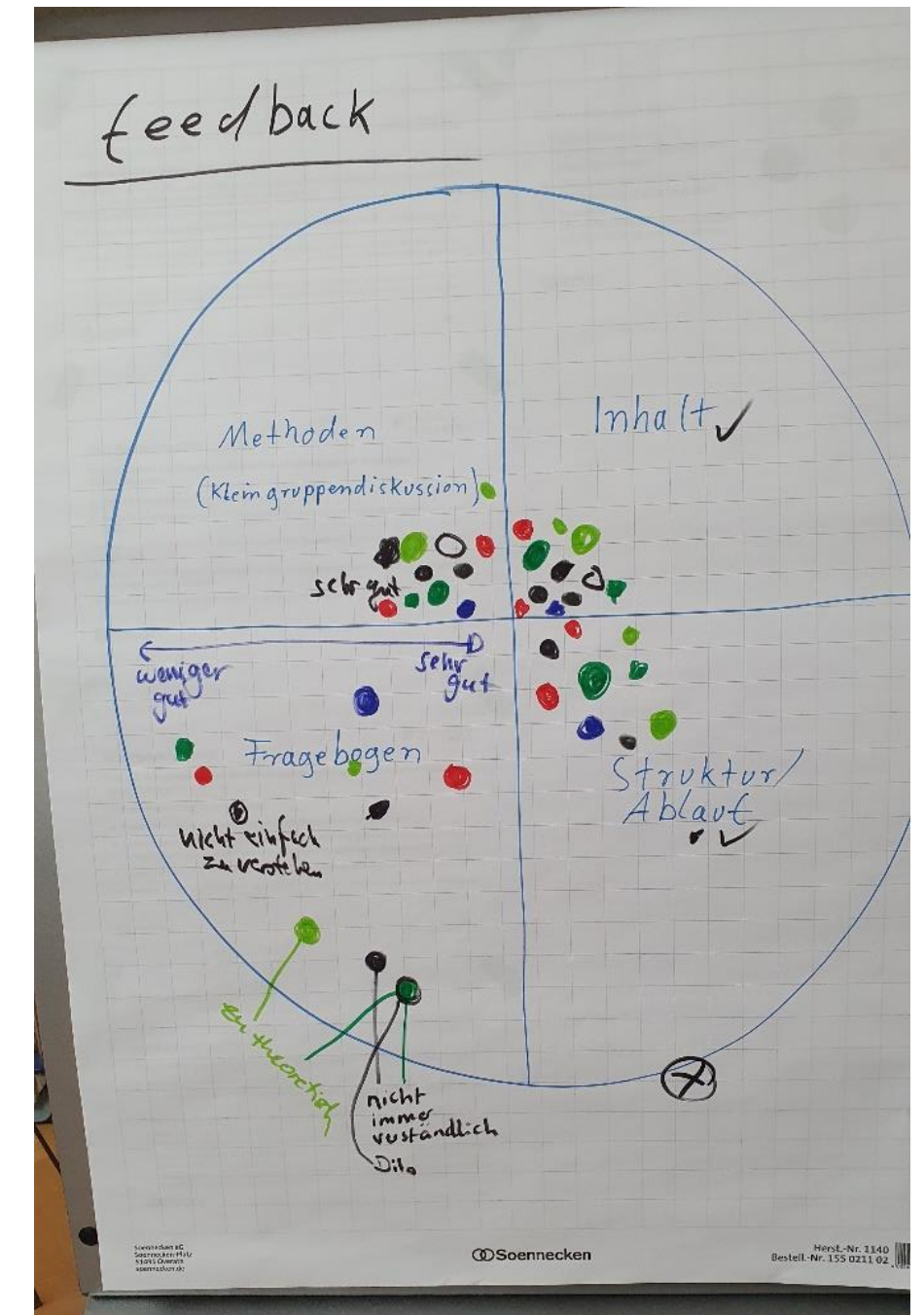
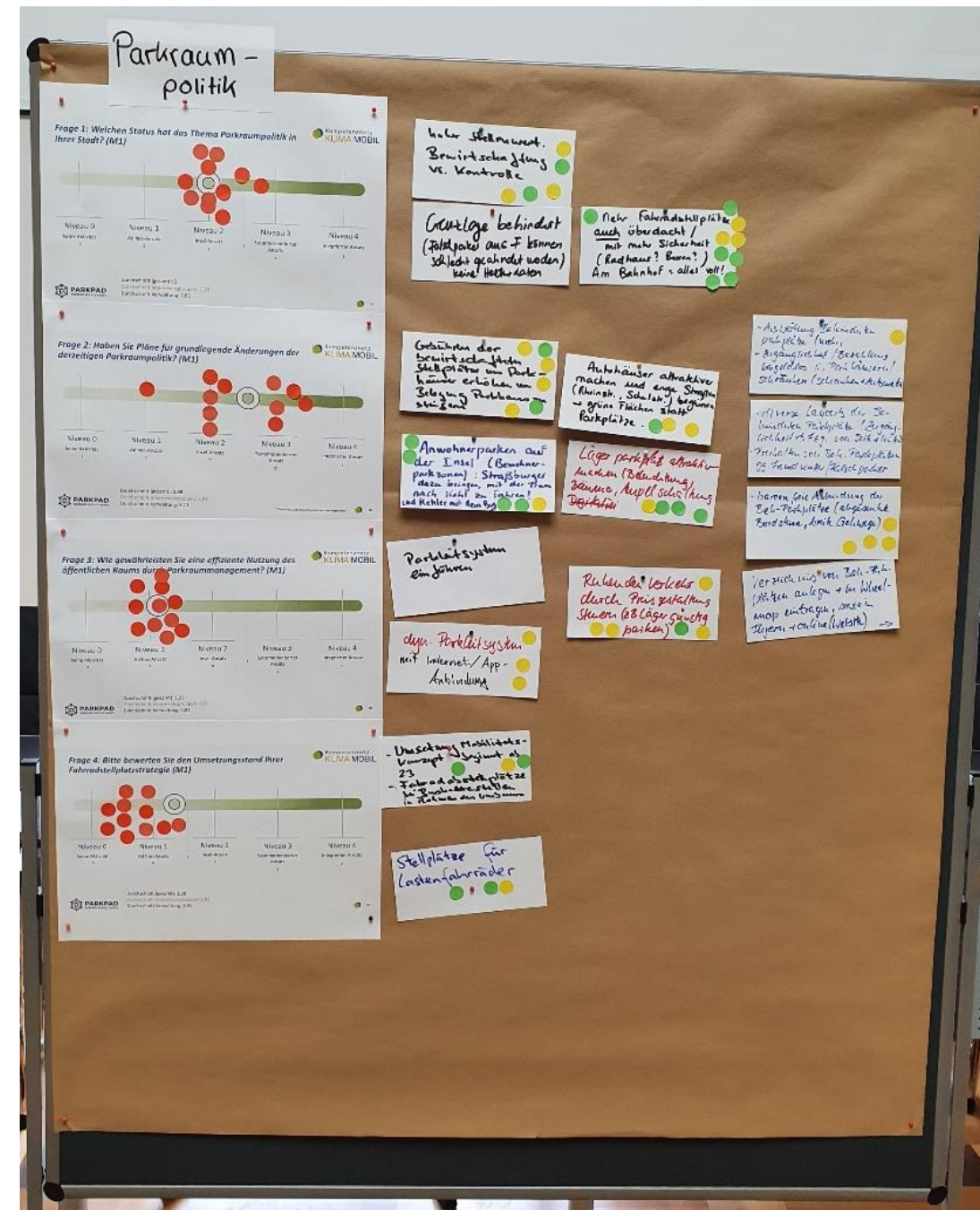
```

    graph TD
      M1((Modul 1)) -.-> M23((Modul 2 und 3))
      M23 -.-> M4((Modul 4))
      M4 -.-> M5((Modul 5))
      M5 -.-> M1
  
```

PARKPAD
PARKING POLICY AUDIT

43

Consens- and Action plan meeting in Kehl



Strategic parking management policy in Baden-Württemberg

- Local stakeholder dialogue on a strategic parking policy has proven to be worth and fruitful
- The process will be enhanced in 2024 and adapted to the conditions in Baden-Württemberg
- Presentation under a new brand, development of an adapted questionnaire and specific workshop methods
- The aim is to focus more on climate protection in transport in the municipal area of responsibility
- The implementation of the measures discussed for parking should be achieved and, if possible, linked to other municipal projects such as the climate mobility plan
- Strong coordination of actions with the Baden-Württemberg Ministry of Transport



Baden-Württemberg

MINISTERIUM FÜR VERKEHR

 Kompetenznetz
KLIMA MOBIL



Thank you for your attention!

Martina Hertel

Contact Details

Difu – Deutsches Institute für Urbanistik

German Institute of Urban affairs

Zimmerstr. 13 – 15,

10969 Berlin, Germany

Hertel@difu.de