

POLIS

CITIES AND REGIONS FOR TRANSPORT INNOVATION

ANNUAL
CONFERENCE

2023

LEUVEN, BELGIUM • 29-30 NOVEMBER 2023



leuven



BICIPOLITANA

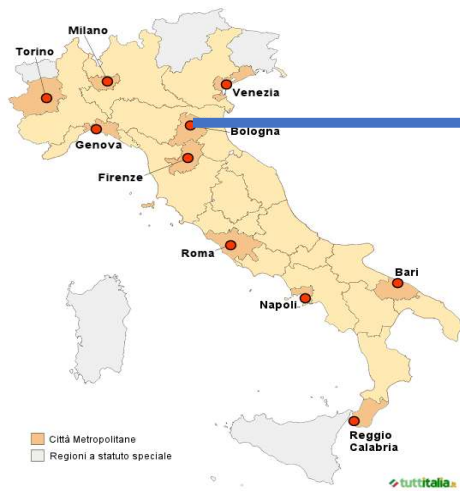
a cycling-oriented cultural transition

Giulia Maroni

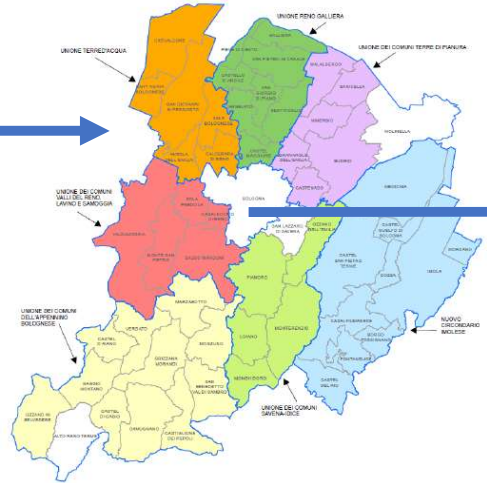
Member of the Mobility Planning Office
the Metropolitan City of Bologna



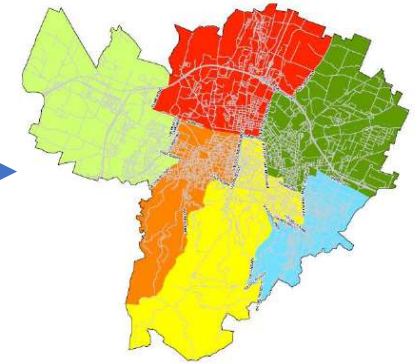
INSTITUTIONAL OVERVIEW



Italy
10 Metropolitan Cities since 2014



Metropolitan City of Bologna
55 Municipalities, 7 Union of Municipalities
1.000.000 inhabitants



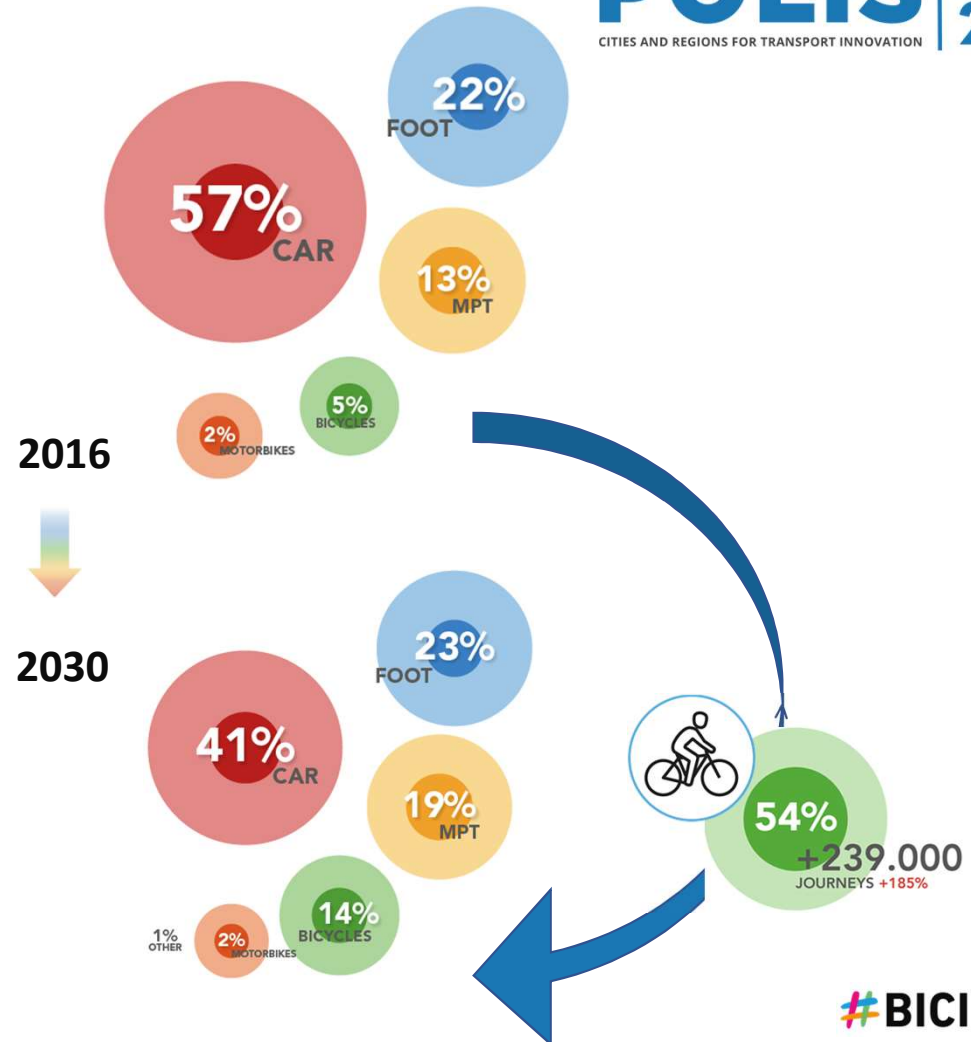
THE METROPOLITAN SUMP: A COMPETITIVE ADVANTAGE



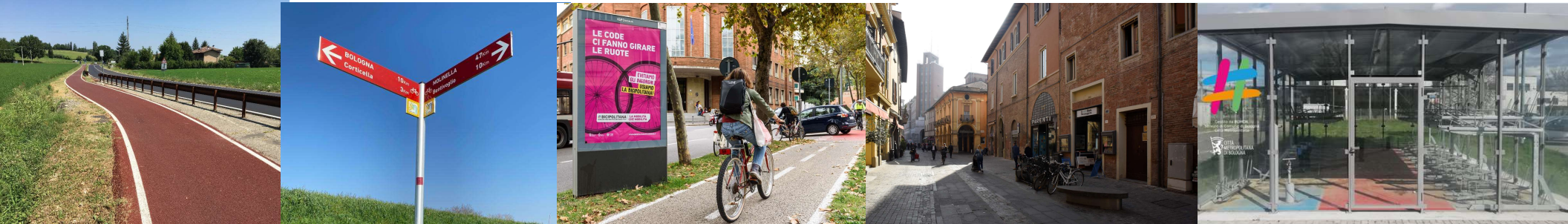
Objective 2030



440.000 journeys to be directed to public transport and bicycles



STRATEGIES FOR CYCLING MOBILITY



Cycling mobility network



Shared space and widespread cycling



Cycling services



Coordinated wayfindg system and signage

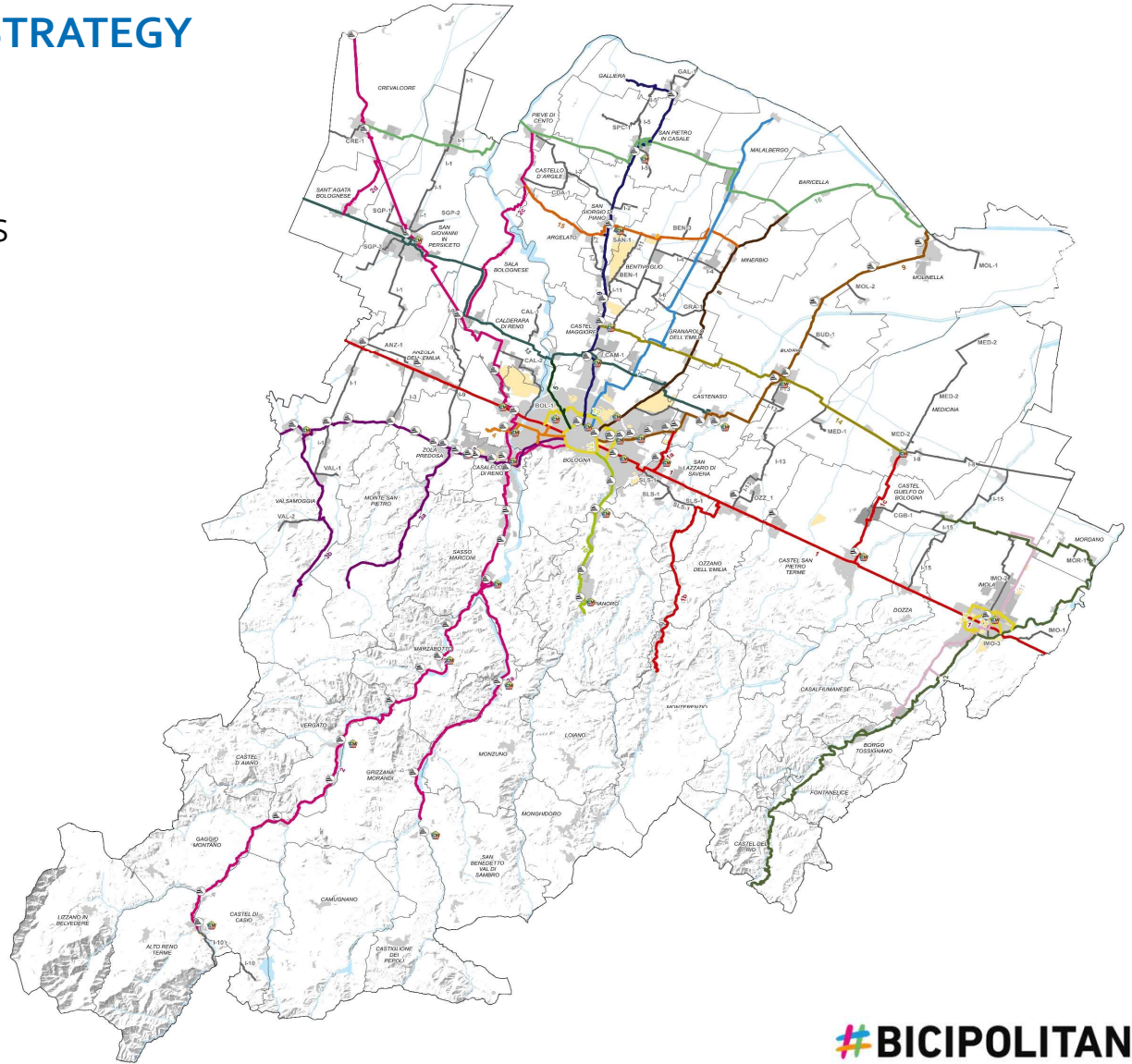


Communication and training

BICIPOLITANA: A TERRITORIAL STRATEGY

The Network connects:

- BOLOGNA
- OTHER MEDIUM CITIES
- SMALL VILLAGE
- RURAL CONNECTION
- TRAIN STATIONS
- INDUSTRIAL AREAS
- LOGISTIC AREAS
- SCHOOLS
- SERVICES



BICIPOLITANA IS NOT ONLY ENVIRONMENTAL SUSTAINABILITY

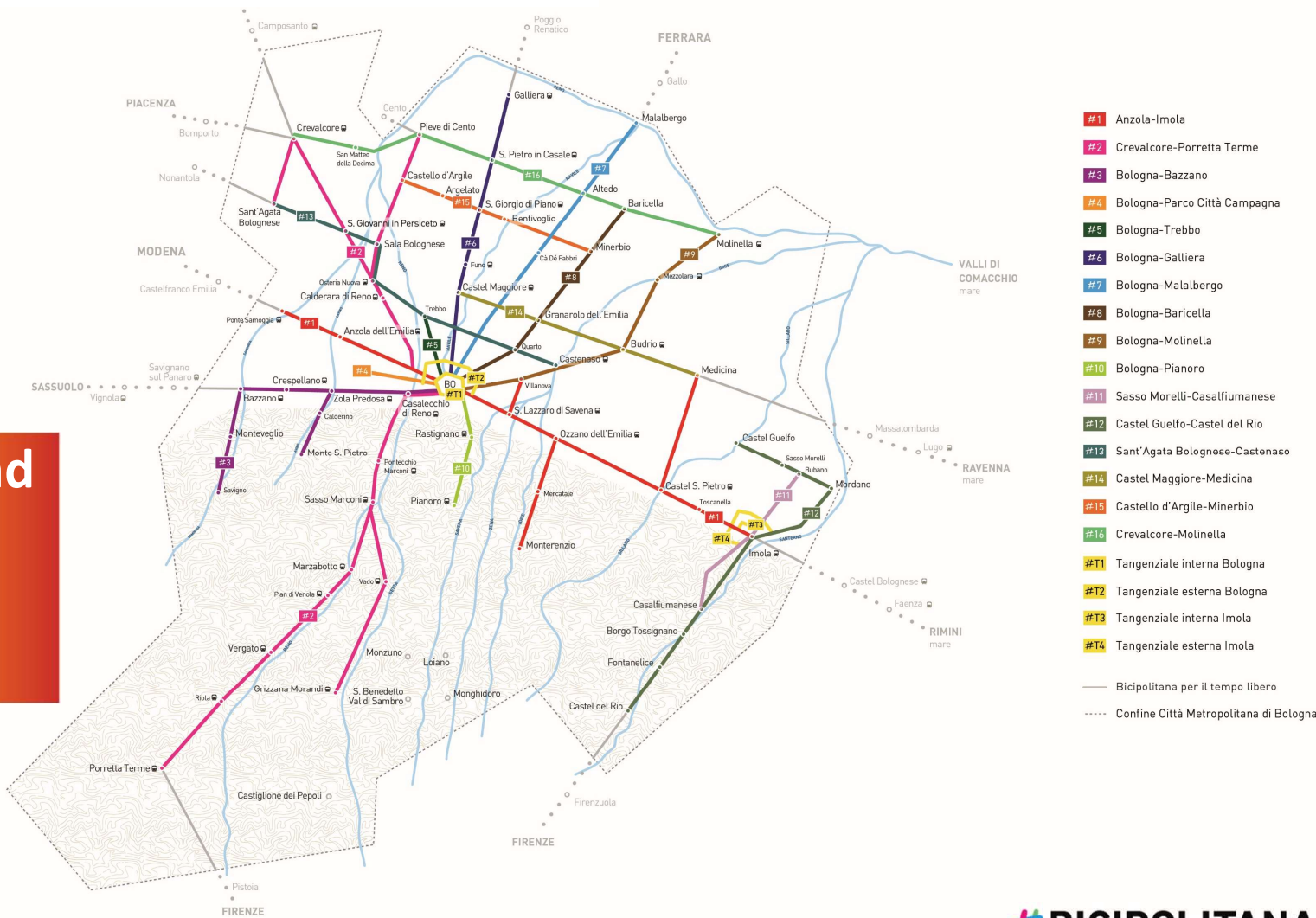
- ACCESSIBILITY
- QUALITY OF LIFE
- EQUITY FOR PEOPLE
- EQUAL OPPORTUNITY
- TERRITORIAL EQUALIZATION



BICIPOLITANA FOR DAILY JOURNEY

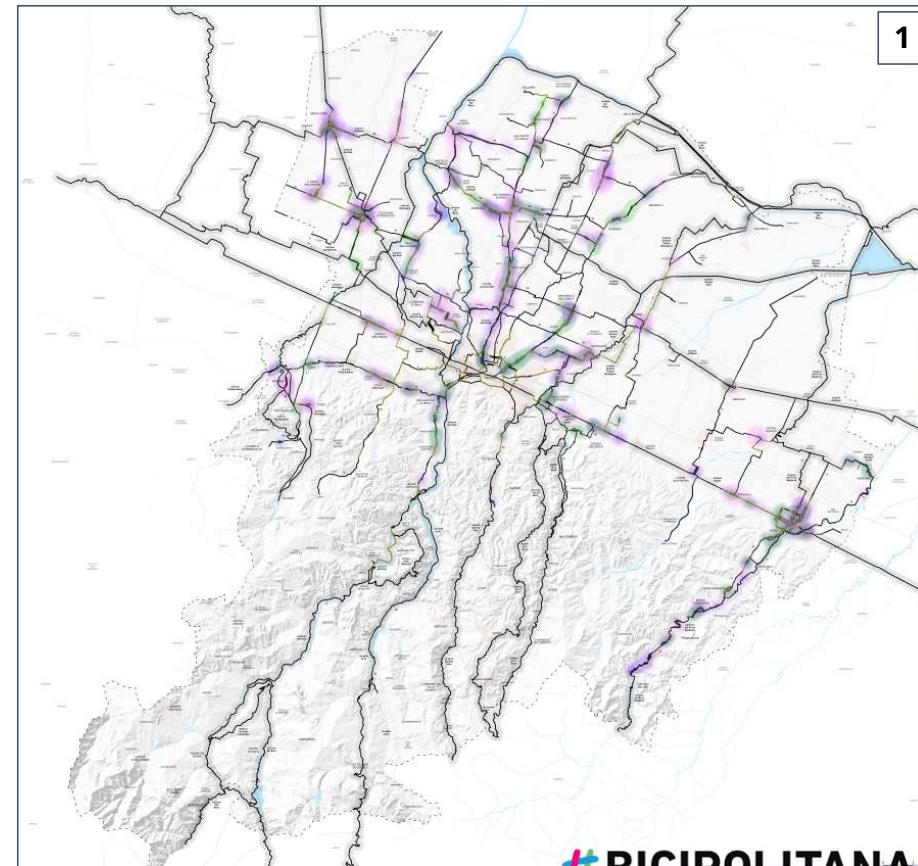
20 bike lines
980 km

400 km existing and
on going network
160 km funded
415 km planned

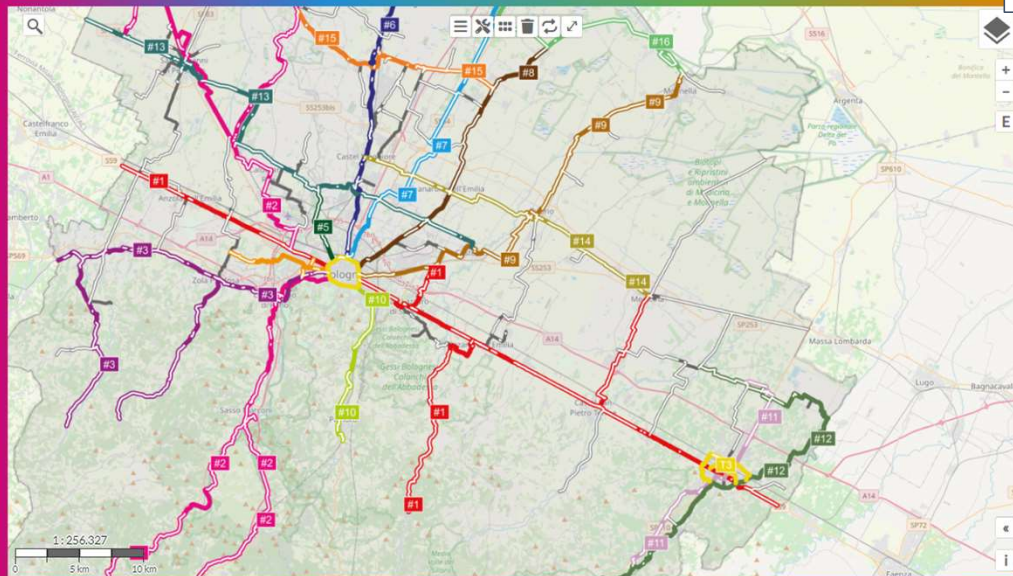


WHAT WE ARE DOING – ANALYSIS OF THE EXISTING NETWORK

- SURVEY AND NETWORK ANALYSIS
- STANDARD ANALYSIS
- IDENTIFICATION OF CRITICAL PARTS/POINTS (1)
- GEOREFERENTIATION OF DATA (2)

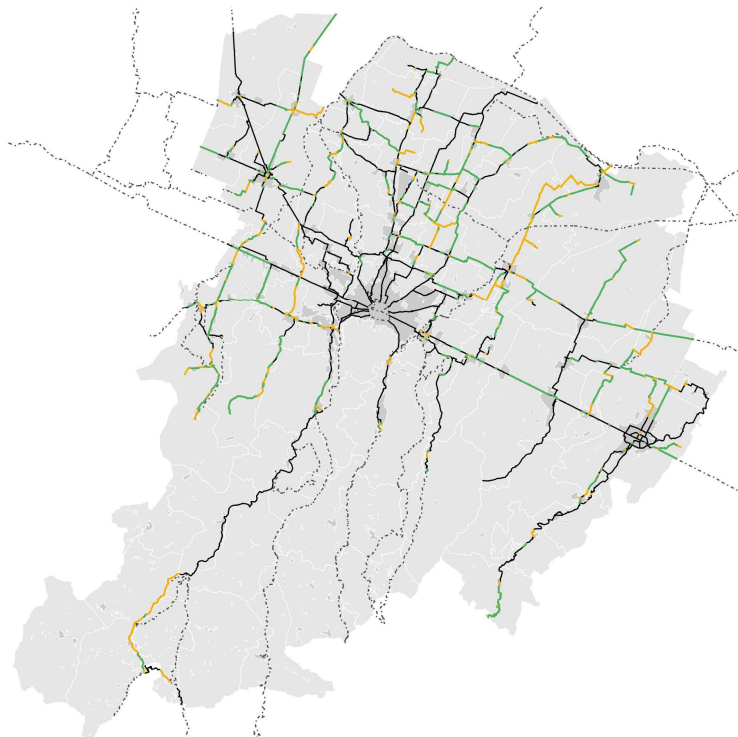


LA MAPPA

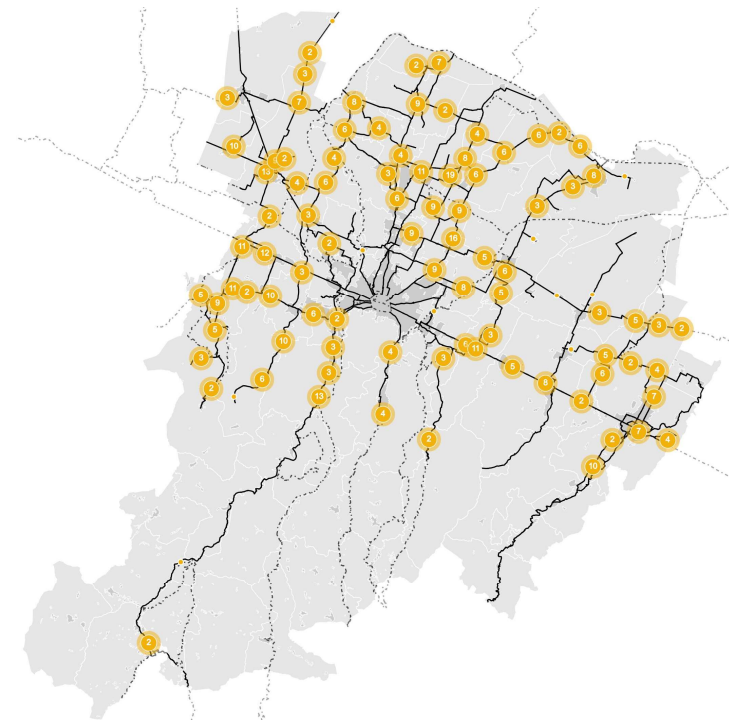


CONDITION OF THINGS: FEASIBILITY OF PLANNED NETWORK

- DEFINITION OF CYCLE ROUTES
- SHARING OF ROUTES WITH MUNICIPALITIES
- TRACKING IDENTIFICATION
- DEFINITION OF HOMOGENEOUS DESIGN PRINCIPLES
- IDENTIFICATION OF INTERVENTIONS AND COSTS



design proposal for new cycle paths



specific measures

WHAT WE ARE DOING – THE SAME STANDARDS FOR EVERYONE

HANDBOOK FOR DESIGNING THE CYCLE NETWORK

with design criteria and
homogeneous quality standards
for different contexts

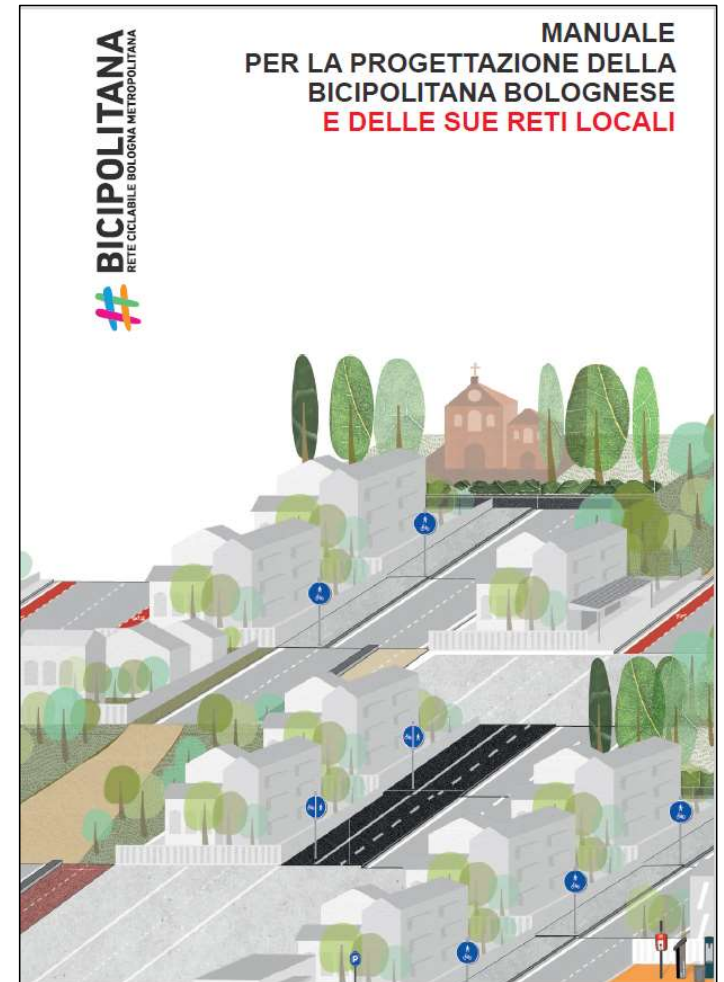


MUNICIPAL OFFICE TECHNICIANS
PRIVATE DESIGNER

PRINCIPLES



ATTENTION TO DIFFERENT CYCLIST'S NEEDS
CONTEXT CARE
QUALITY OF THE DESIGN ELEMENTS
SIMPLICITY OF MAINTENANCE

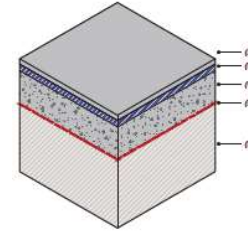
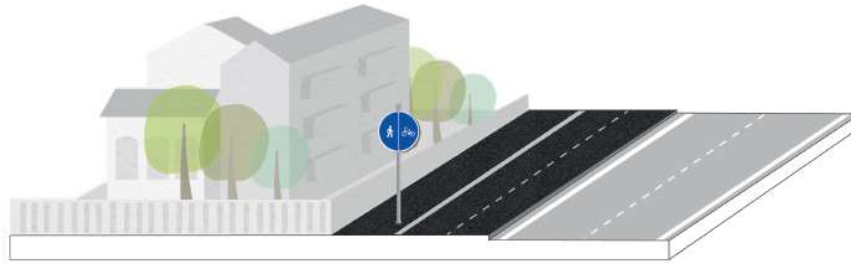


 **BICIPOLITANA**

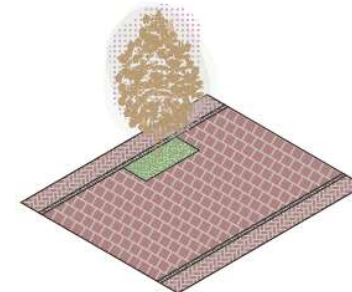
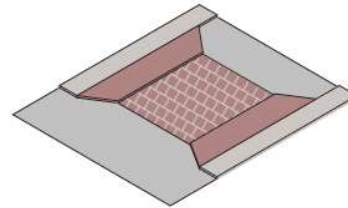
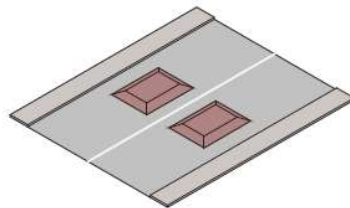
WHAT WE ARE DOING – THE SAME STANDARDS FOR EVERYONE



TYPE AND MATERIALS OF CYCLE PATH



TRAFFIC MODERATION ELEMENTS

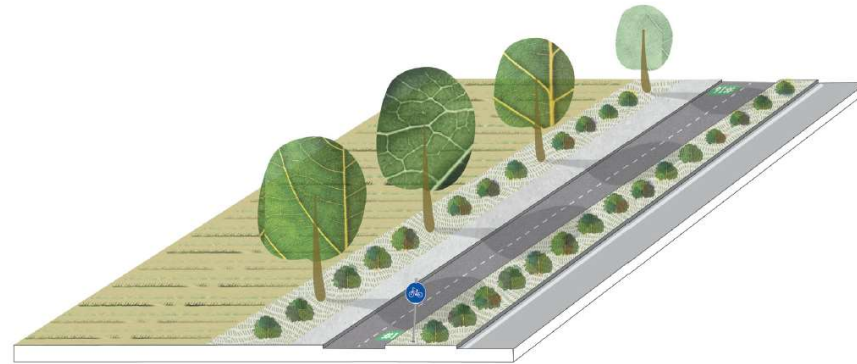


BICYCLE FACILITIES

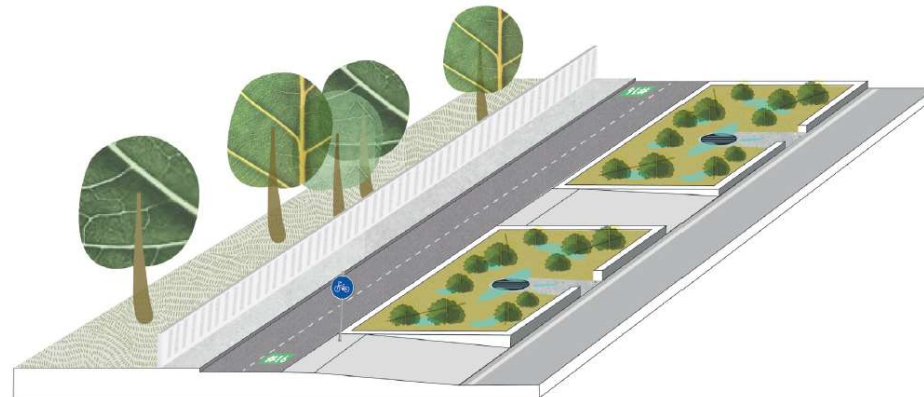




WHAT WE ARE DOING – THE SAME STANDARDS FOR EVERYONE

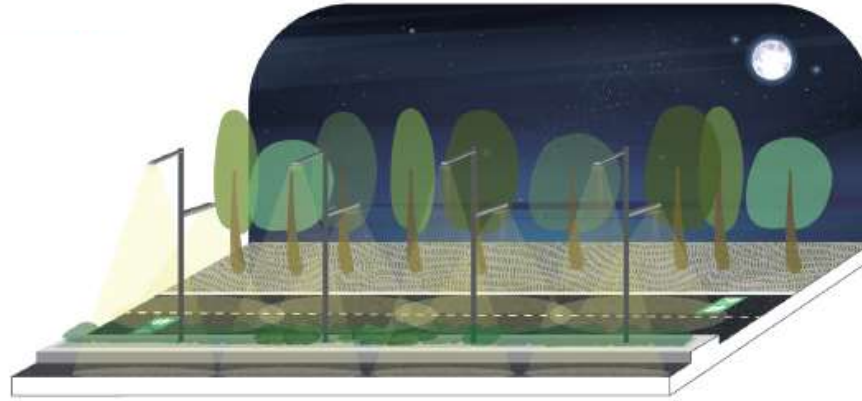


VEGETATION-BASED MITIGATION





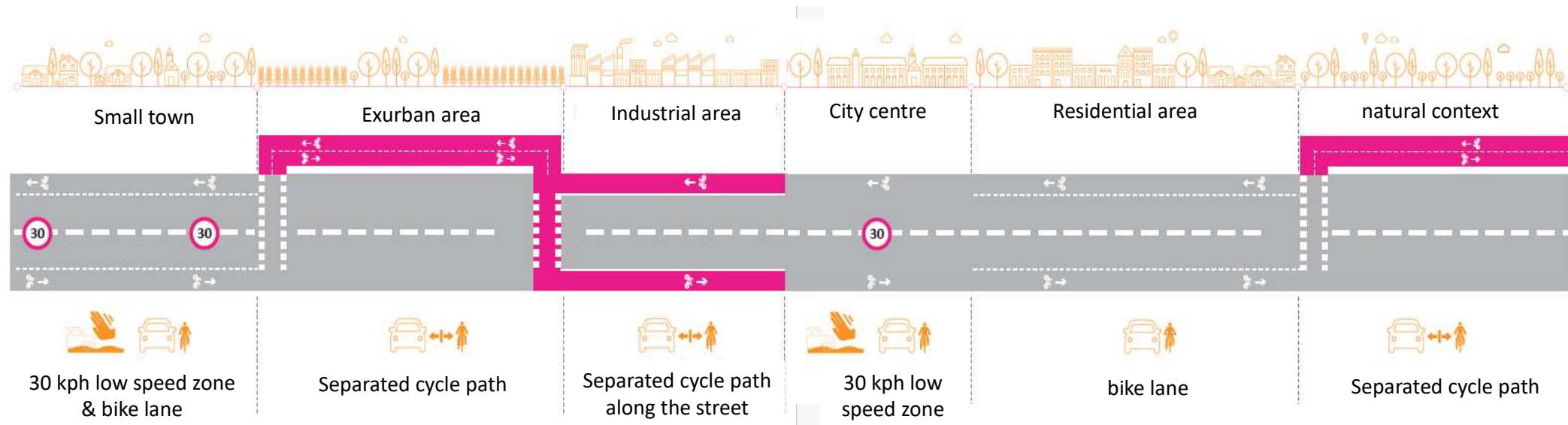
WHAT WE ARE DOING – THE SAME STANDARDS FOR EVERYONE



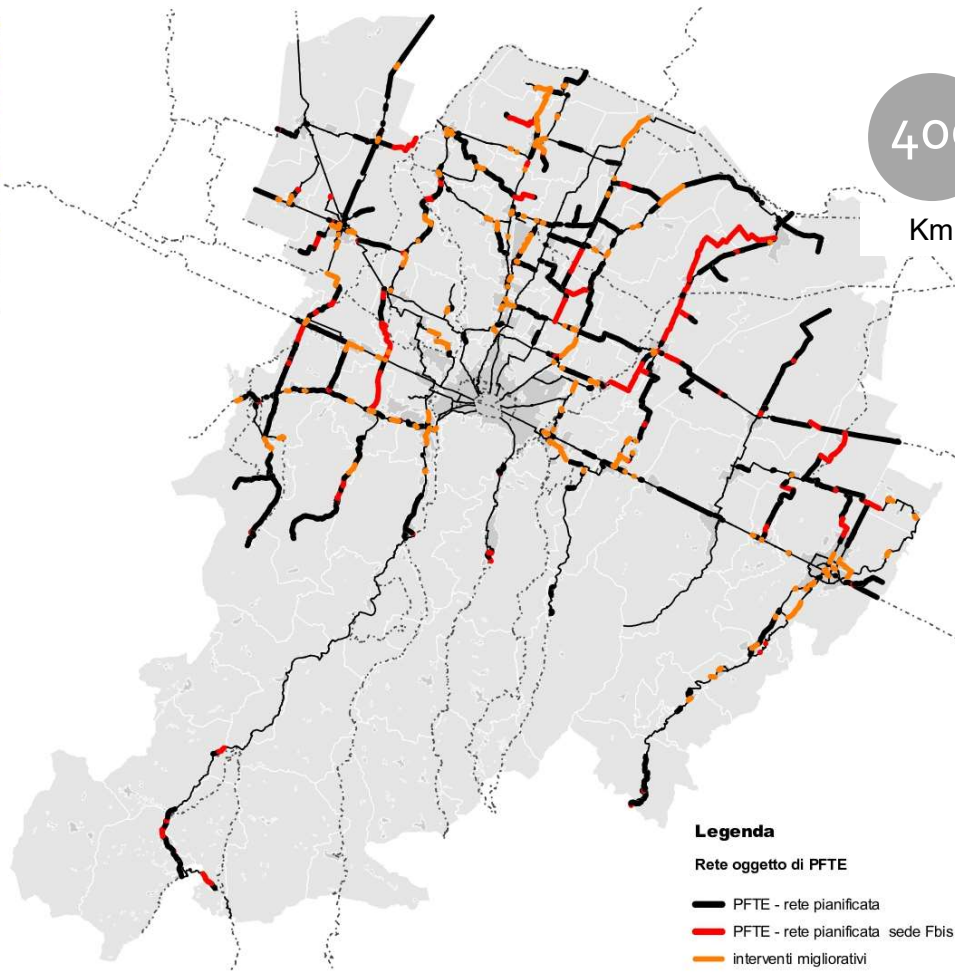
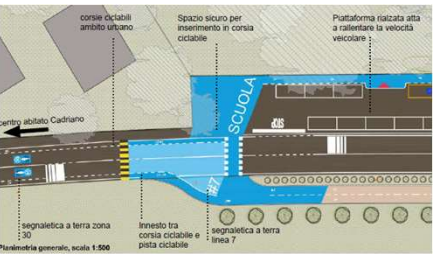
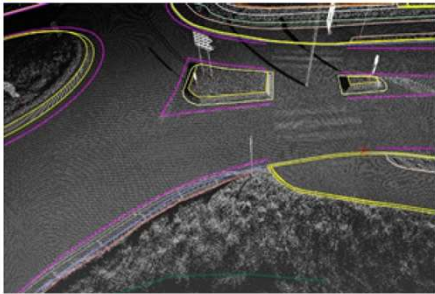
ILLUMINATION SYSTEM



WHAT WE ARE DOING – FEASIBILITY PRINCIPLES



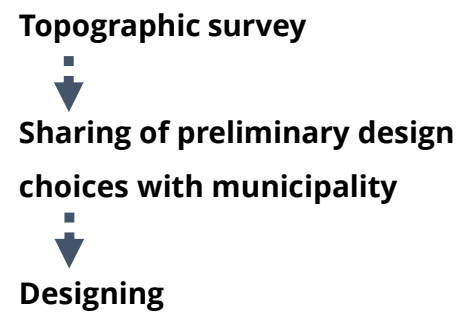
WHAT WE ARE DOING - DESIGNING



Legenda
Rete oggetto di PFTE

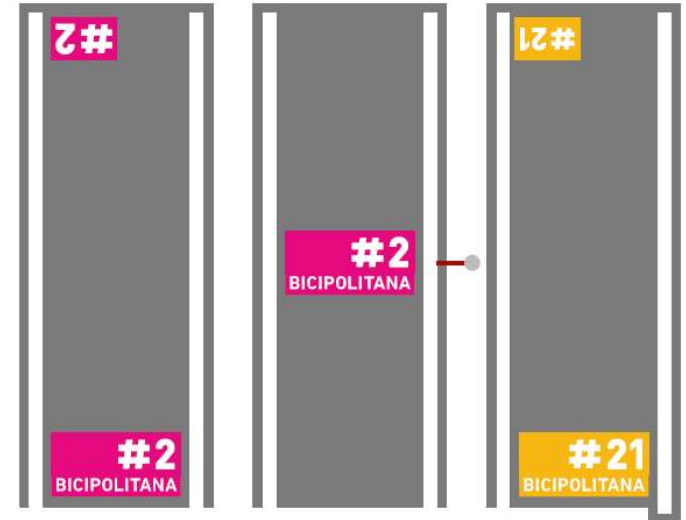
- PFTE - rete pianificata
- PFTE - rete pianificata sede Fbis
- interventi migliorativi

PROJECTS OF ROUTES IN COOPERATION WITH MUNICIPALITIES



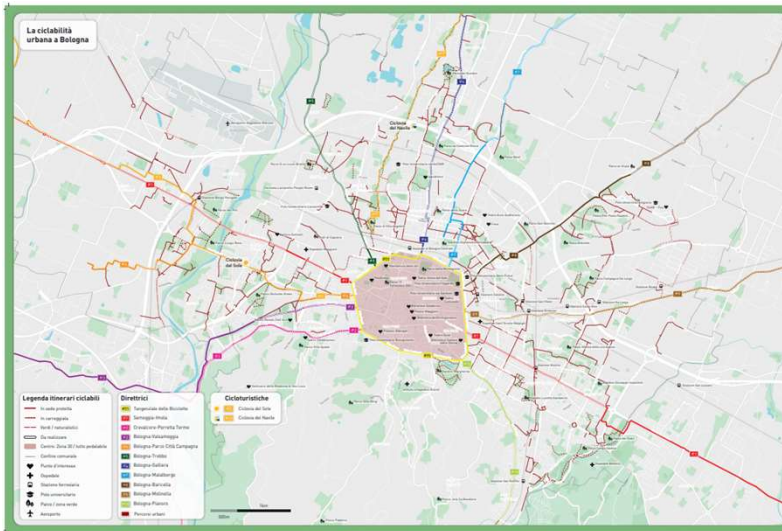


WHAT WE ARE DOING- WAYFINDING



BICIPOLITANA

WHAT WE ARE DOING - COMMUNICATION



#BICIPOLITANA
RETE CICLABILE BOLOGNA METROPOLITANA

HOME > LINEE PER TUTTI I GIORNI

LINEE PER TUTTI I GIORNI

Una rete di ciclabili che connette tutti i principali centri abitati, poli produttivi, ospedalieri e funzionali del territorio metropolitano garantendoti una valida alternativa all'auto anche fuori Bologna. Le linee sono pensate per collegare le città nella maniera più rapida possibile e hanno diversi colori per riconoscerle velocemente. Incredibile vero? Provala!

Clicca sul numero di linea che ti interessa per aprire il dettaglio oppure vai sulle mappe interattive per conoscere dove e localizzate.

- Materiale scaricabile
- Mappe interattive

#1 1 - Anzola - Imola	#2 2 - Crevalcore - Porretta Terme	#3 3 - Bologna - Bezzano	#4 4 - Bologna - Parco Città campagna
#5 5 - Bologna - Trebbio	#6 6 - Bologna - Galliera	#7 7 - Bologna - Malalbergo	#8 8 - Bologna - Bancella
#9 9 - Bologna - Molinella	#10 10 - Bologna - Pianoro	#11 11 - Sasso Marconi - Casalfumane	#12 12 - Castel Guelfo - Castel del Rio
#13 13 - Sant'Agata Bolognese - Castenaso	#14 14 - Castel Maggiore - Medicina	#15 15 - Castello D'Argile - Minerio	#16 16 - Crevalcore - Molinella
#T1 T1 Tangenziale Interna Bologna	#T2 T2 Tangenziale esterna Bologna		



WHAT WE ARE DOING - INVOLVEMENT



BIKE PRIDE
EDIZIONE BICIPOLITANA

SABATO 17 SETTEMBRE
PIAZZA LUCIO DALLA BOLOGNA

INDOSSA UNO DEI COLORI DELL'HASHTAG BICIPOLITANA

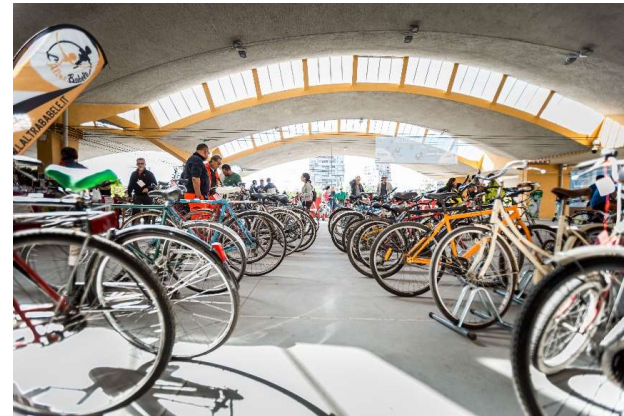
LA PARTECIPAZIONE È LIBERA MA ALLE PRIME 500 ISCRIZIONI IN REGALO LA T-SHIRT BICIPOLITANA. COLLEGATI QUI

FOSSIBILITÀ DI NOLEGGIO BICI

#BICIPOLITANA
RETE CICLABILE BOLOGNA METROPOLITANA
WWW.BICIPOLITANABOLOGNESE.IT

BIKE PRIDE BOLOGNA

Logos: Comune di Bologna, Città Metropolitana di Bologna, prepAIR, MADRO BRUNO, SETTIMANA EUROPEA DELL'AMBIENTE, FIAB, sportfund, LEGAMBIENTE



#BICIPOLITANA



**Thank you for
your attention!**



For information:

GIULIA MARONI

giulia.maroni@cittametropolitana.bo.it

 [@POLISnetwork](https://twitter.com/POLISnetwork)

 [POLIS Network](https://www.linkedin.com/company/POLIS%20Network)

 [polis.network](https://www.instagram.com/polis.network)

 [@polisvideo](https://www.youtube.com/@polisvideo)

POLIS | ANNUAL
CONFERENCE
2023
CITIES AND REGIONS FOR TRANSPORT INNOVATION



 **BICIPOLITANA**
RETE CICLABILE BOLOGNA METROPOLITANA

www.bicipolitanabolognese.it

Instagram: [@bicipolitana_bolognese](https://www.instagram.com/bicipolitana_bolognese)

Facebook: [Bicipolitana bolognese](https://www.facebook.com/Bicipolitana%20bolognese)