

POLIS

CITIES AND REGIONS FOR TRANSPORT INNOVATION

ANNUAL CONFERENCE 2023

LEUVEN, BELGIUM • 29-30 NOVEMBER 2023



leuven



What is the scale of violence on our roadways?

20,600

Collisions in 2022

Conflict between vehicles and vulnerable users



Safety is an increasingly important issue



Why the existing approach is a problem



How can we be more proactive?

Leading indicators

TYPICALLY
UNDOCUMENTED

Lagging indicators

TYPICALLY
DOCUMENTED

Lots of other leading indicators

Safety Triangle, HEINRICH, 1931
& BIRD, 1969

300,000 Unsafe acts

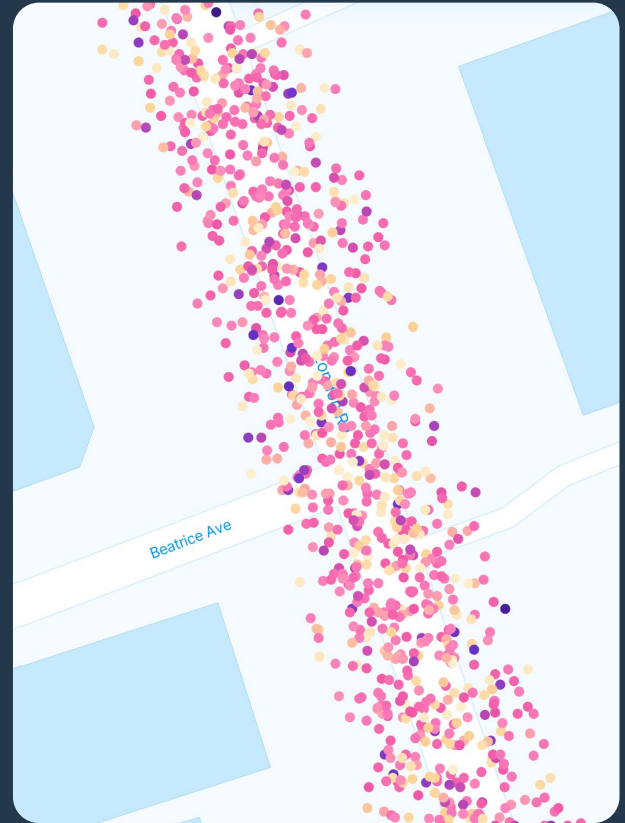
600 Near Miss

30 Minor

10 Serious

1 Fatal

Data for Informed Road Safety Interventions



Collisions, why does it matter?



Floating car data, why does it matter?



Shared micro-mobility, why does it matter?



Putting it all together



- Collision history

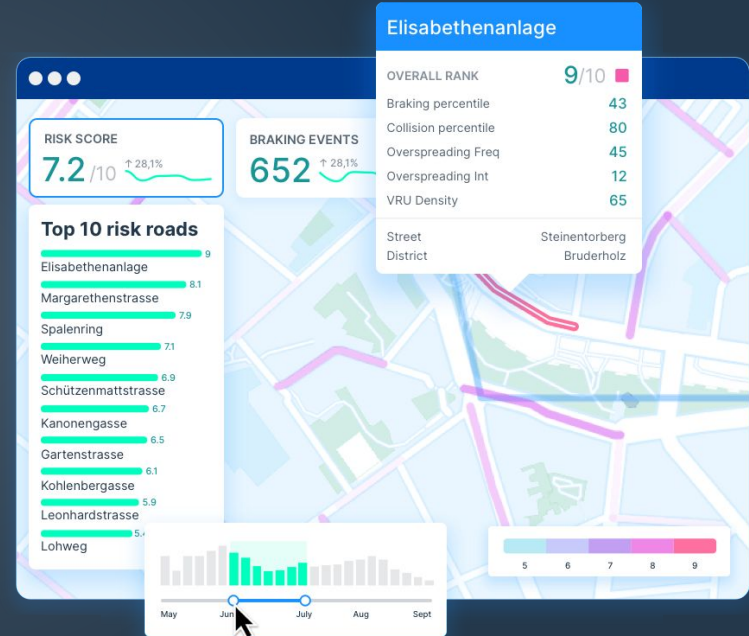


- Harsh braking events
- Speeding data
- Vehicle density

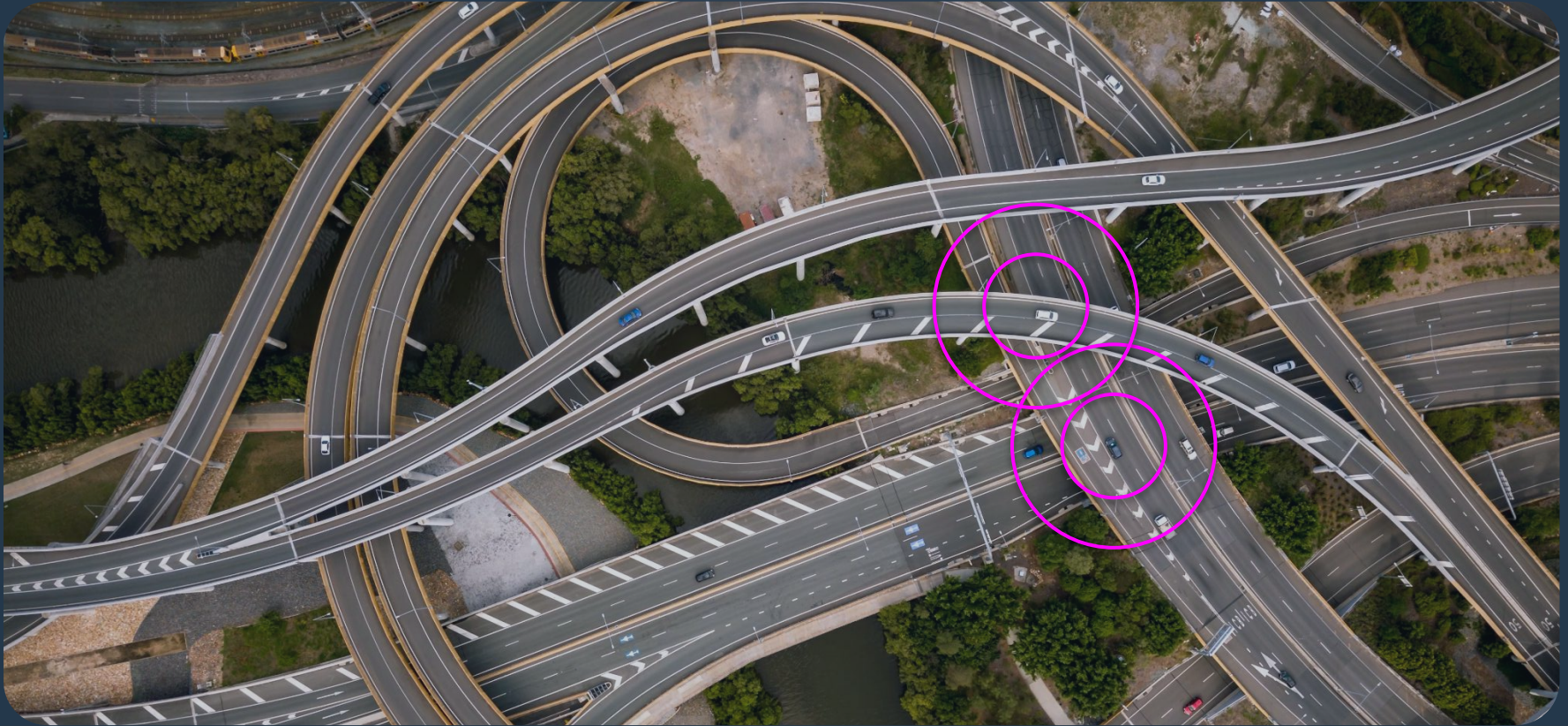


- Vulnerable user density

Putting it all together



Limitations



Transport for London ambition








Problem with existing data collection



Early learnings

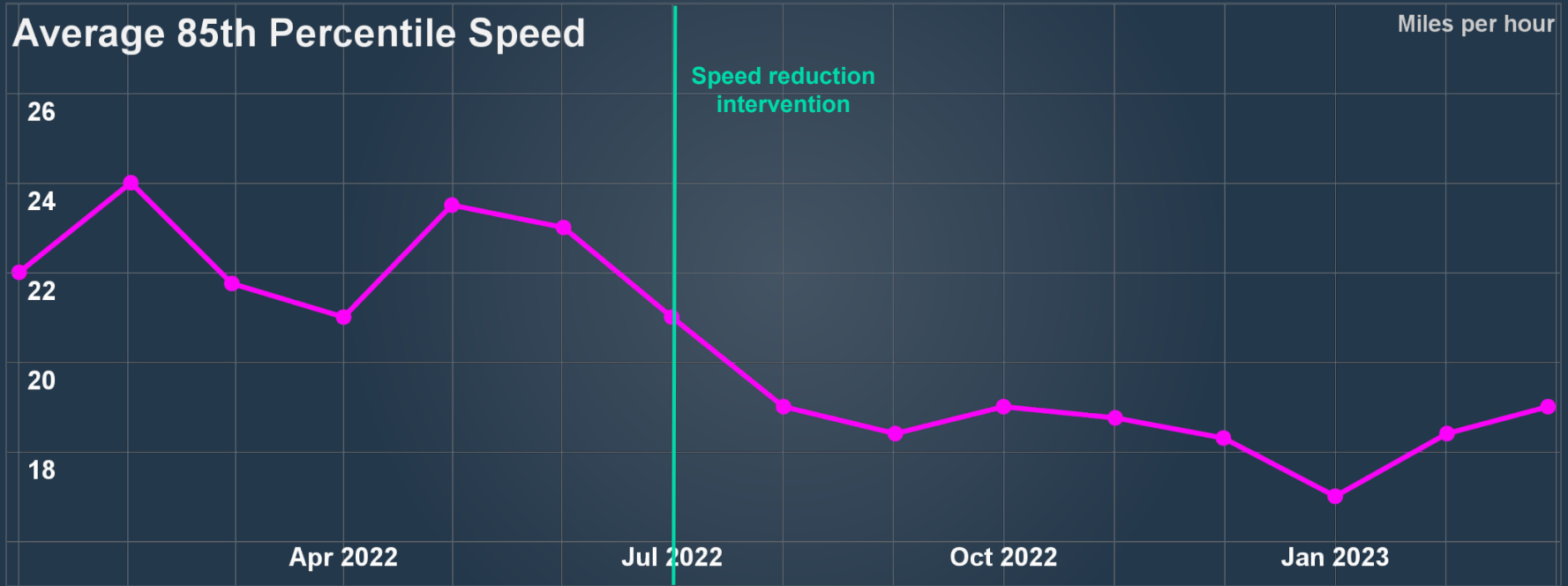
Simulated data for illustrative purposes



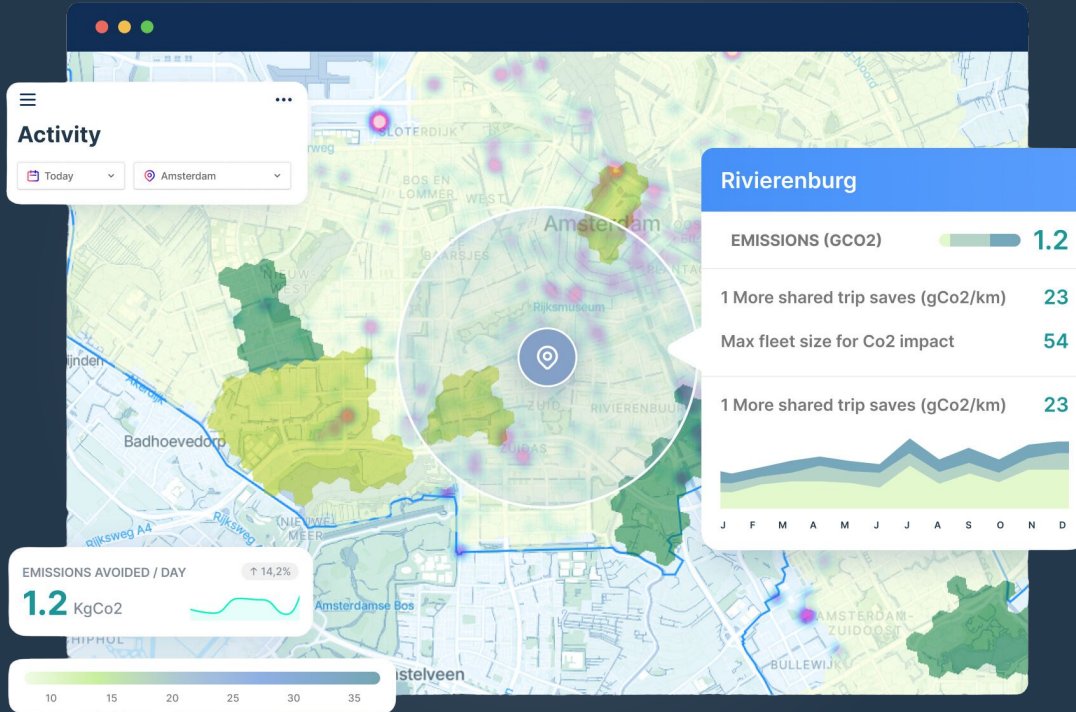
Project	Speed trend post intervention
High Road Plus Monument Way	
Westminster	
 A107 Clapton Common to Kenworthy Rd	
London Road	

Results

Simulated data for illustrative purposes



Thinking about co-benefits



Weighting and reprioritizing for VRUs



Our vision for better roads



Stay safe!



Want to know more?

**Download our White Paper
New Approaches to Road Safety:**

