

POLIS

CITIES AND REGIONS FOR TRANSPORT INNOVATION

ANNUAL
CONFERENCE

2023

LEUVEN, BELGIUM • 29-30 NOVEMBER 2023



leuven

Transportation Justice from an American Perspective

Paulo Nunes-Ueno
Nunes-Ueno Consulting



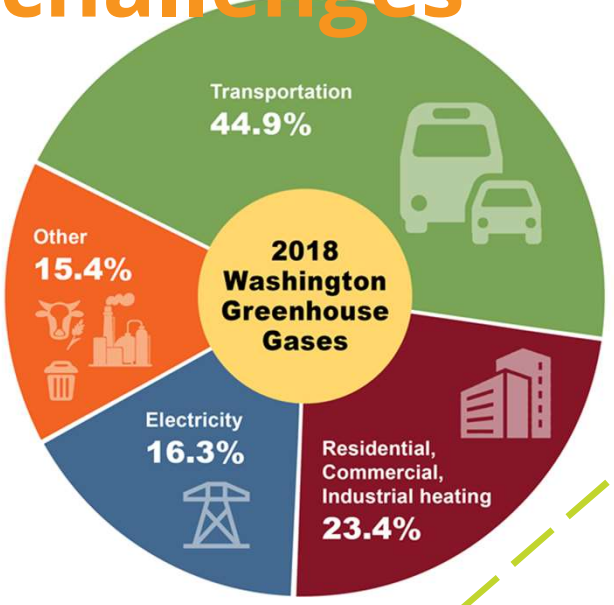
A TRANSPORTATION JUSTICE AGENDA

For

WASHINGTON STATE



Climate and Equity: Our two biggest challenges





**TRANSIT AND
SIDEWALKS
ARE
POWERFUL
CLIMATE AND
EQUITY TOOLS**

**That are
largely
going
untapped
...**



Why?

**BECAUSE BIPOC
VOICES HAVE
BEEN SIDELINED**



**60% OF RIDERS ARE
BIPOC
MANY ARE LOW
INCOME OR
DISABLED**

**We have been
easy to ignore**

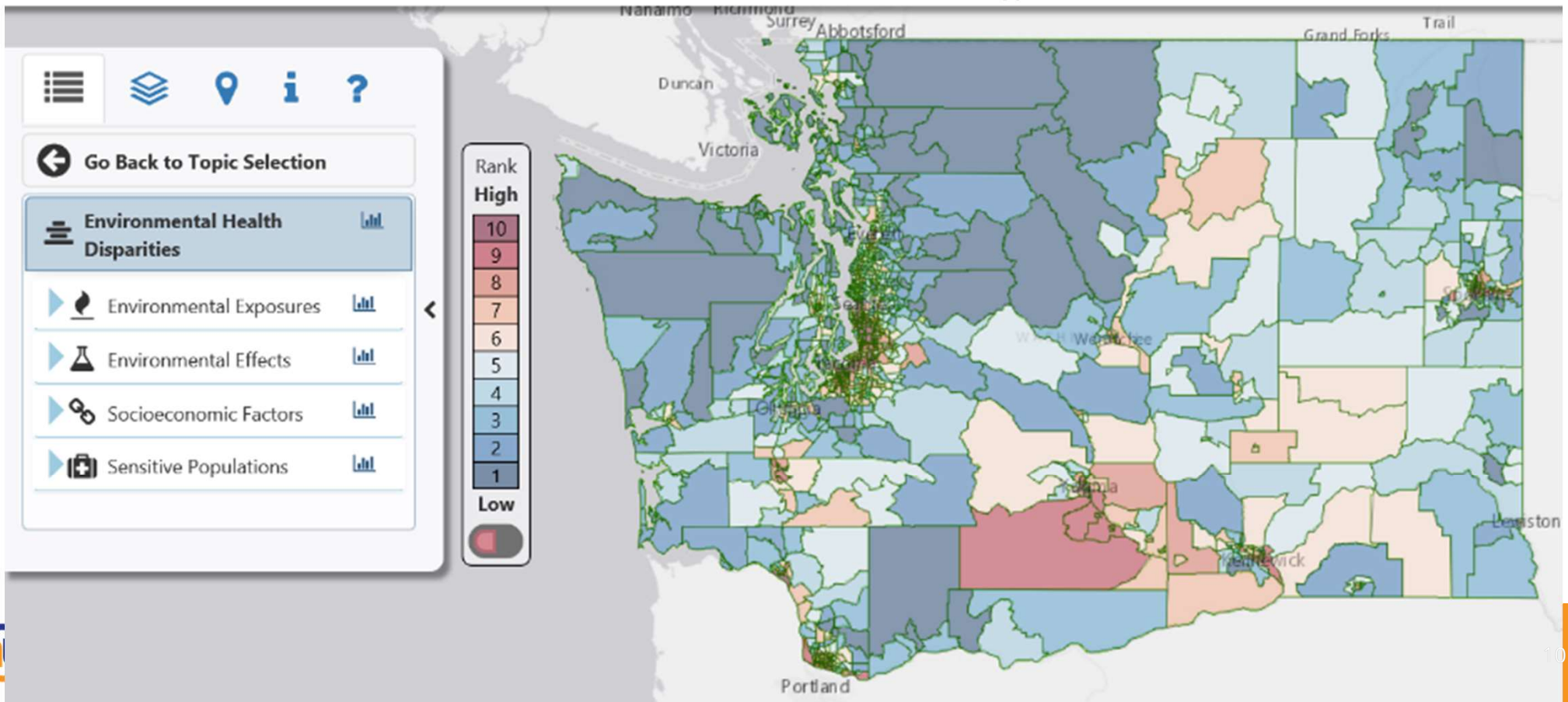


HOW DO WE CHANGE THAT?




Transportation Justice Recipe:

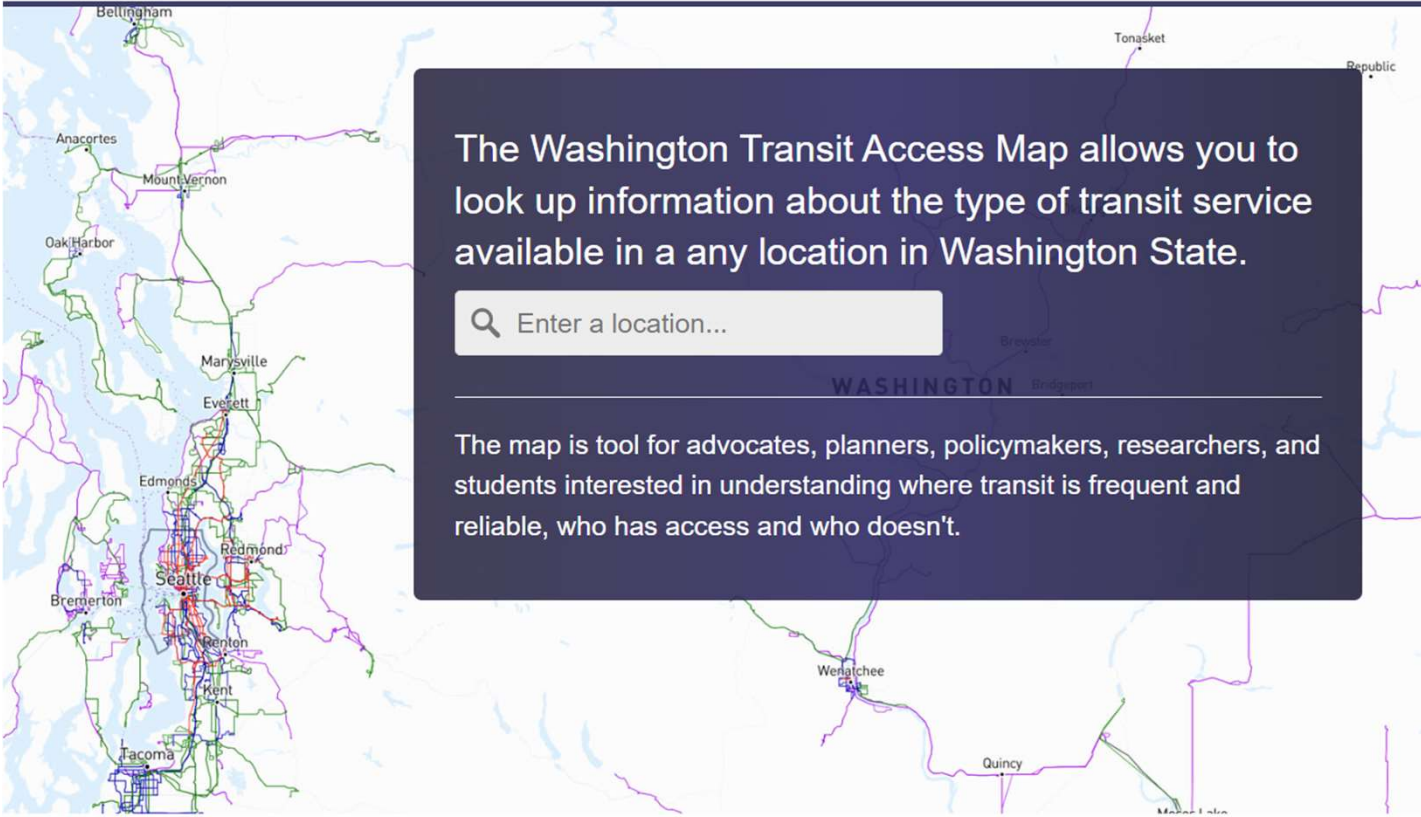
- 1) ASSERT RIGHTS
- 2) SHOW VIOLATIONS
- 3) DEMAND JUSTICE





watransitaccessmap.org


 **Washington
Transit Access Map**



The Washington Transit Access Map allows you to look up information about the type of transit service available in a any location in Washington State.

WASHINGTON

The map is tool for advocates, planners, policymakers, researchers, and students interested in understanding where transit is frequent and reliable, who has access and who doesn't.





TRANSPORTATION JUSTICE AGENDA



Stop building highways in most polluted communities



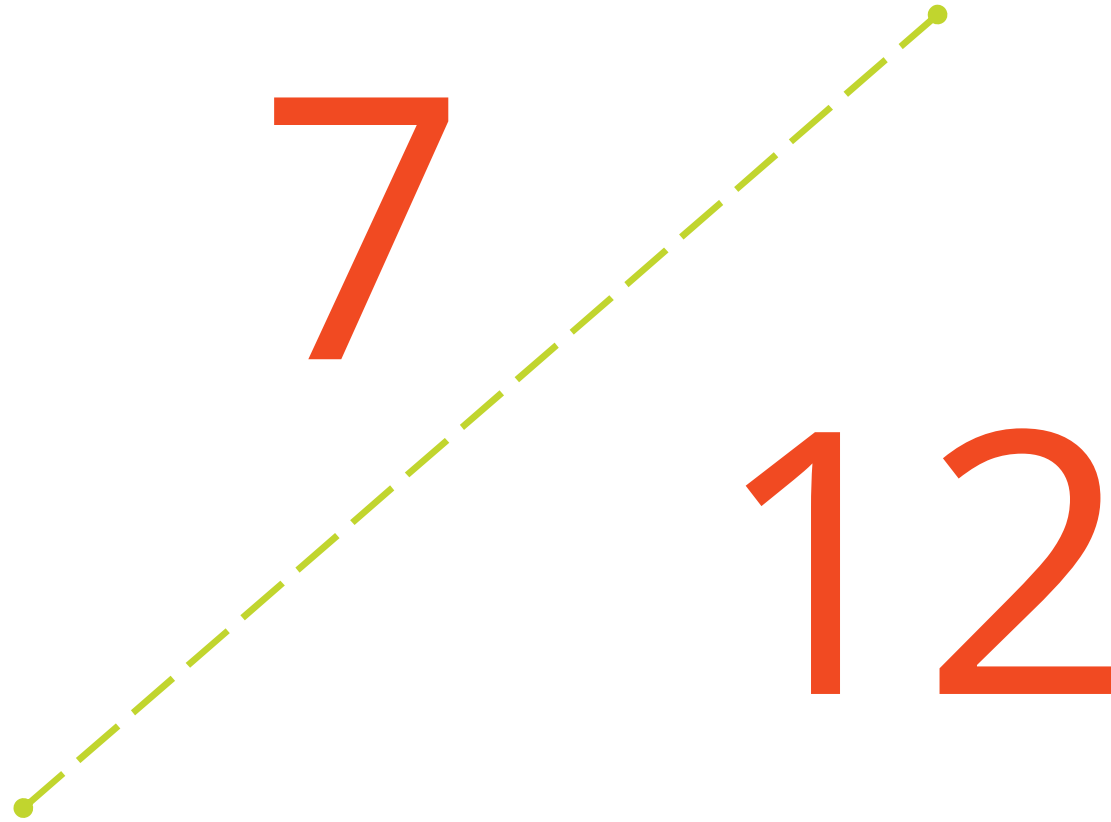
Set clear targets for sidewalks and transit

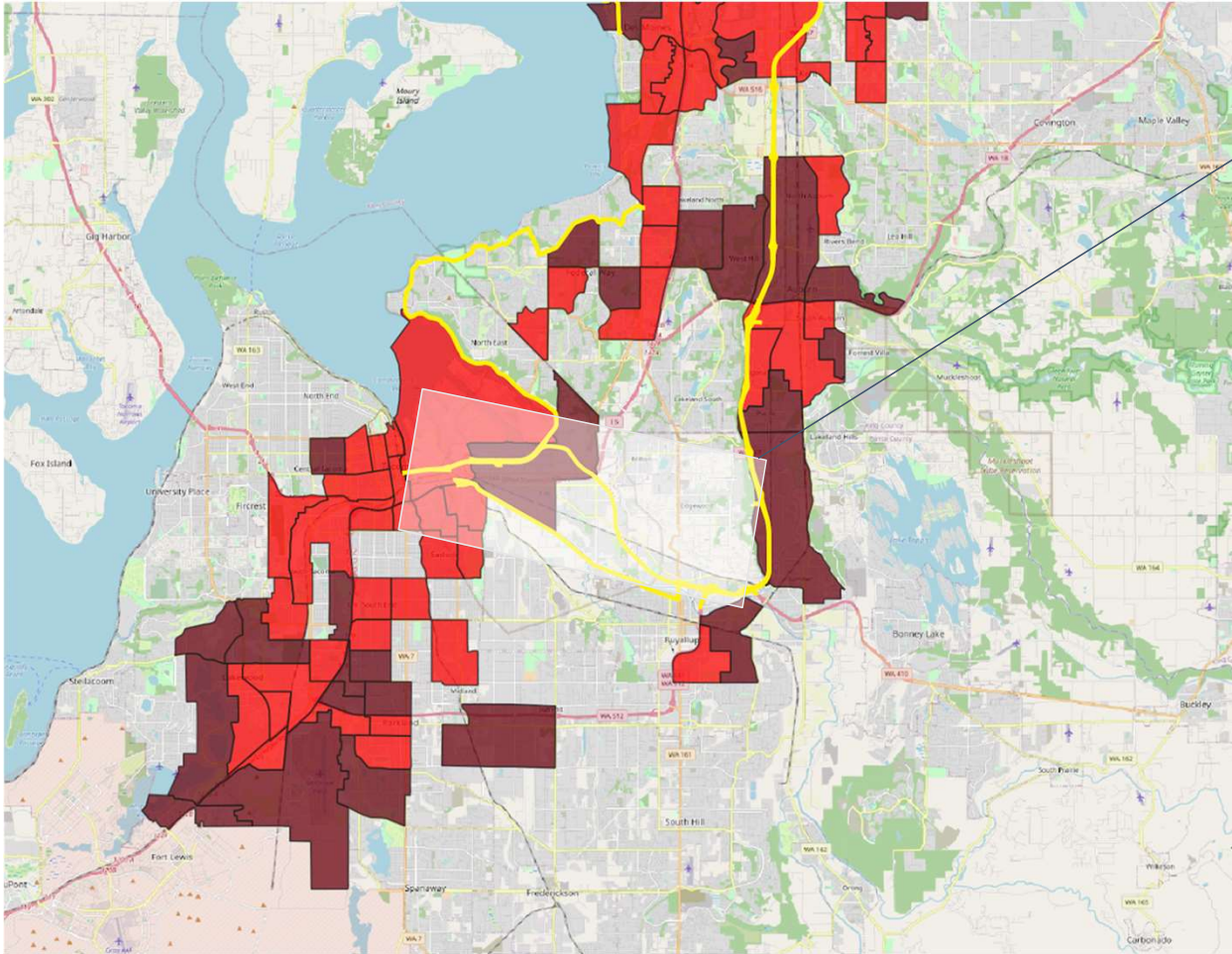


Make stable investments to meet targets



Stop building highways in most polluted communities







Puget Sound Gateway

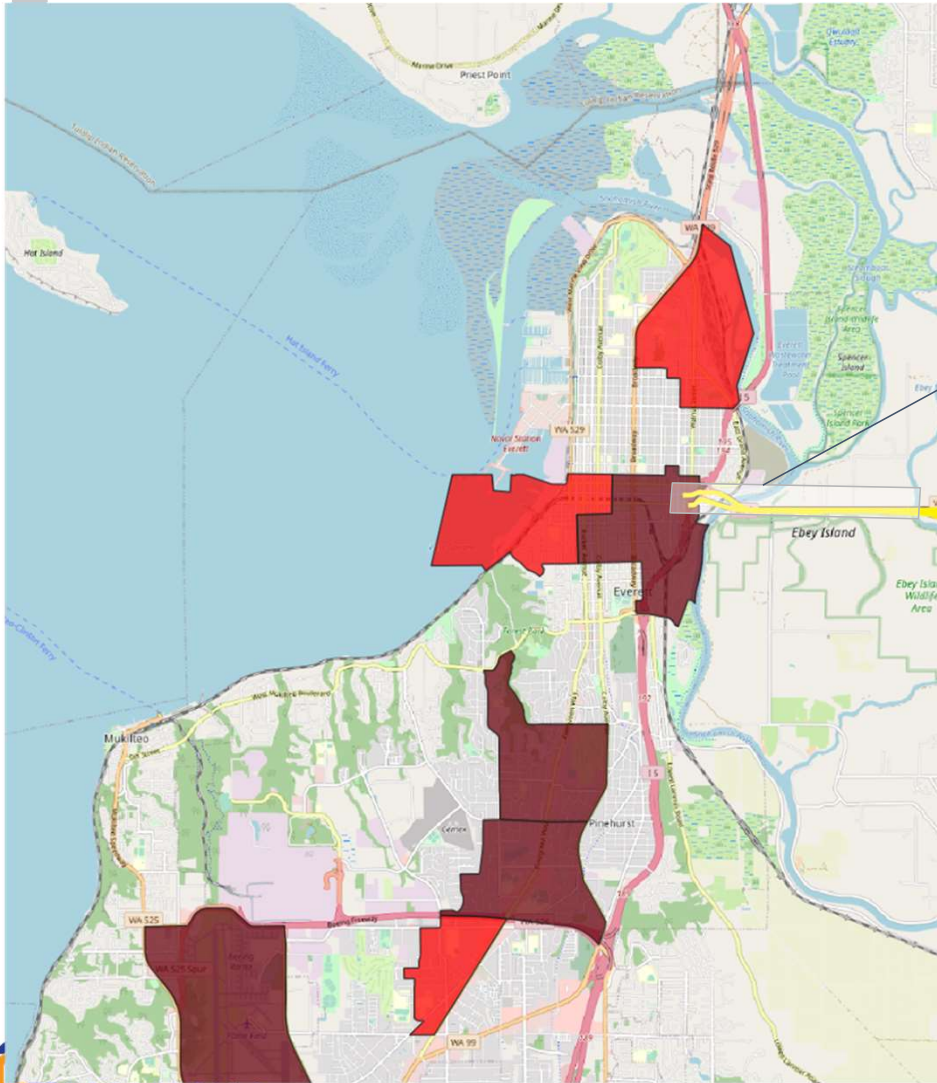
New Lane Miles: 36
Additional VMT: 154 million
Additional GHG: .9 million tons

**Environmental Health
Disparity Areas Impacted: 10**

Budget: \$TBD
**Move Ahead WA Funding:
\$813M**

-  Highest Environmental Health Disparity (10)
-  Second Highest Environmental Health Disparity (9)





US 2 Trestle Expansion

New Lane Miles: 10

Additional VMT: 24 million

Additional GHG: .2 million tons

Environmental Health

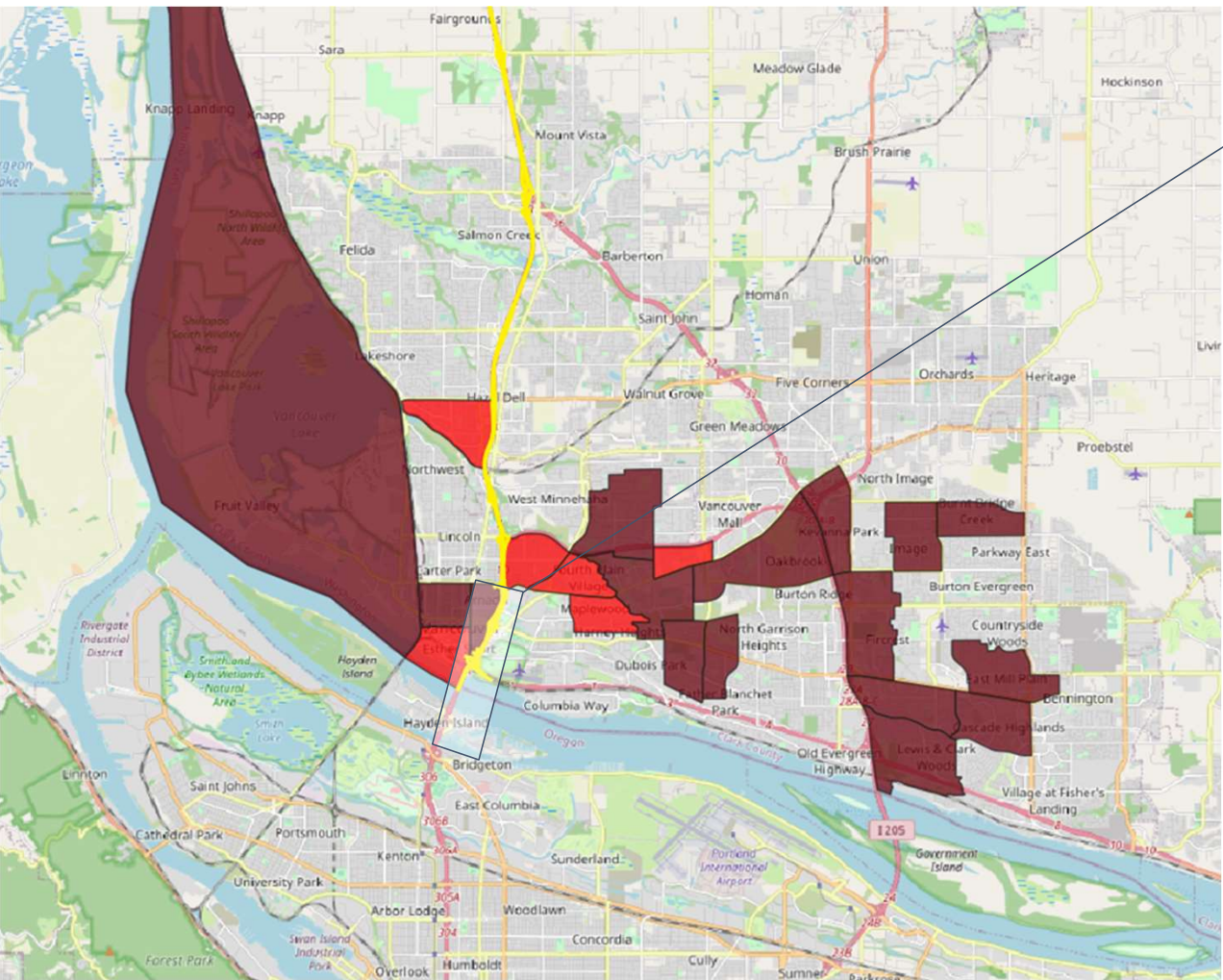
Disparity Areas Impacted: 13

Budget: \$1B

**Move Ahead WA Funding:
\$210M**

- Highest Environmental Health Disparity (10)
- Second Highest Environmental Health Disparity (9)





Columbia River Crossing

New Lane Miles: 10
Additional VMT: 61 million
Additional GHG: .8 million tons

Environmental Health Disparity Areas Impacted: 5

Budget: \$TBD
Move Ahead WA Funding: \$1B

- Highest Environmental Health Disparity (10)
- Second Highest Environmental Health Disparity (9)





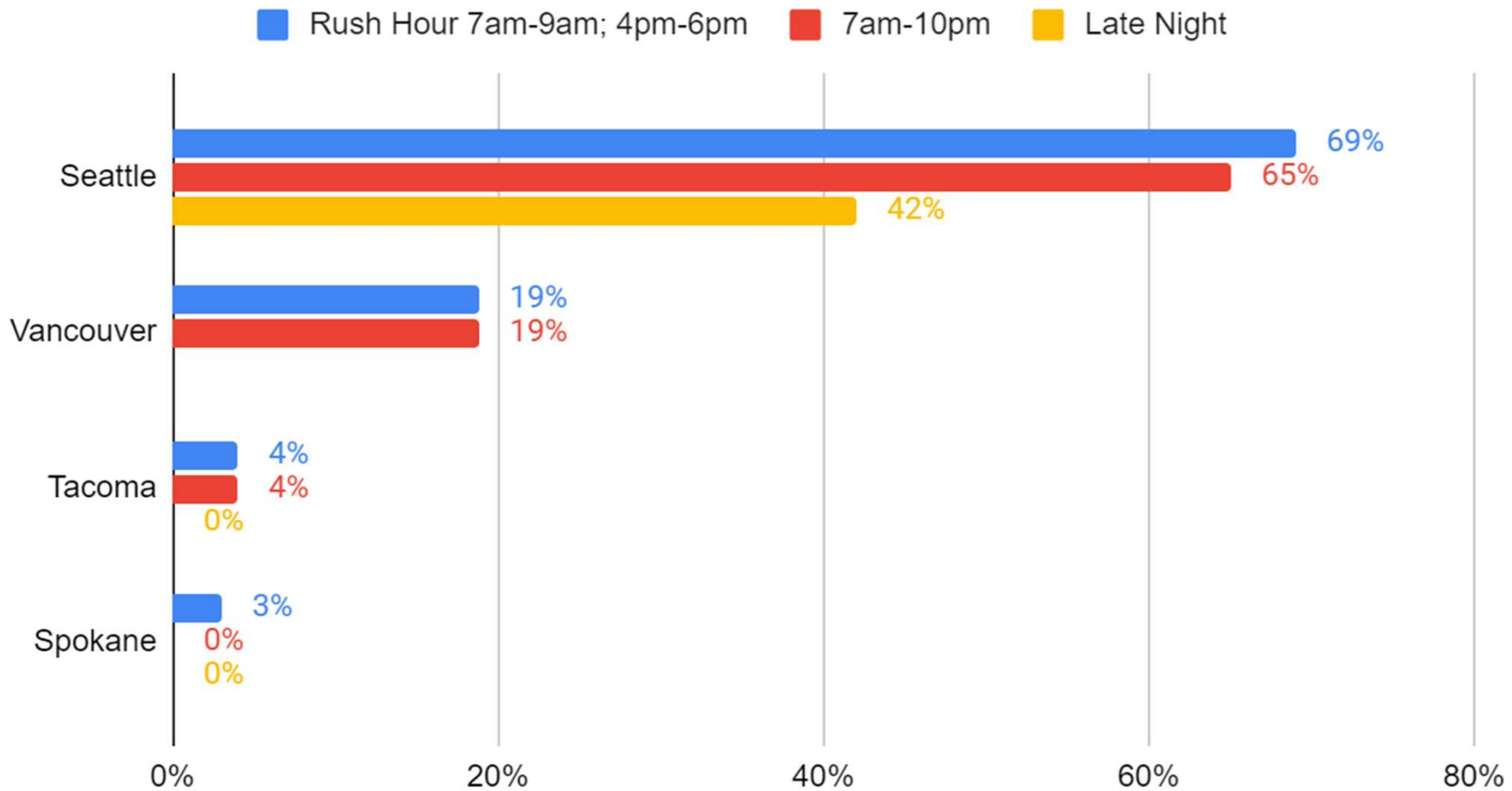
Set clear targets for sidewalks and transit

**TRANSIT
FREQUENCY +
SPANS =
FREEDOM**

**Who ~~Gets~~
Deserves
Freedom?**



People with Access to Frequent Transit





Set clear standards

- ★ **Ensure that at least 65% of Washington residents have access to frequent and reliable transit by 2035**
- ★ **Ensure all transit stops have safe and accessible sidewalks in a half-mile radius by 2035**



**When You Were
Looking For A
House Or Apt Did
You Ask?**

DOES IT HAVE ELECTRICITY?

IS THERE WATER?

IS THE TOILET INSIDE?

ARE THERE ROADS?



**CAN YOU IMAGINE A
FUTURE WHERE
SIDEWALKS AND
TRANSIT ARE AS
COMMON AS INDOOR
TOILETS?**



THE TRANSPORTATION JUSTICE AGENDA IS THE FIRST STEP



**Thank you for
your attention!**



For information: Paulo Nunes-Ueno

+1.206.618.2201

paulo@nunes-ueno.com

 [@POLISnetwork](https://twitter.com/POLISnetwork)

 [POLIS Network](https://www.linkedin.com/company/POLIS Network)

 [polis.network](https://www.instagram.com/polis.network)

 [@polisvideo](https://www.youtube.com/@polisvideo)