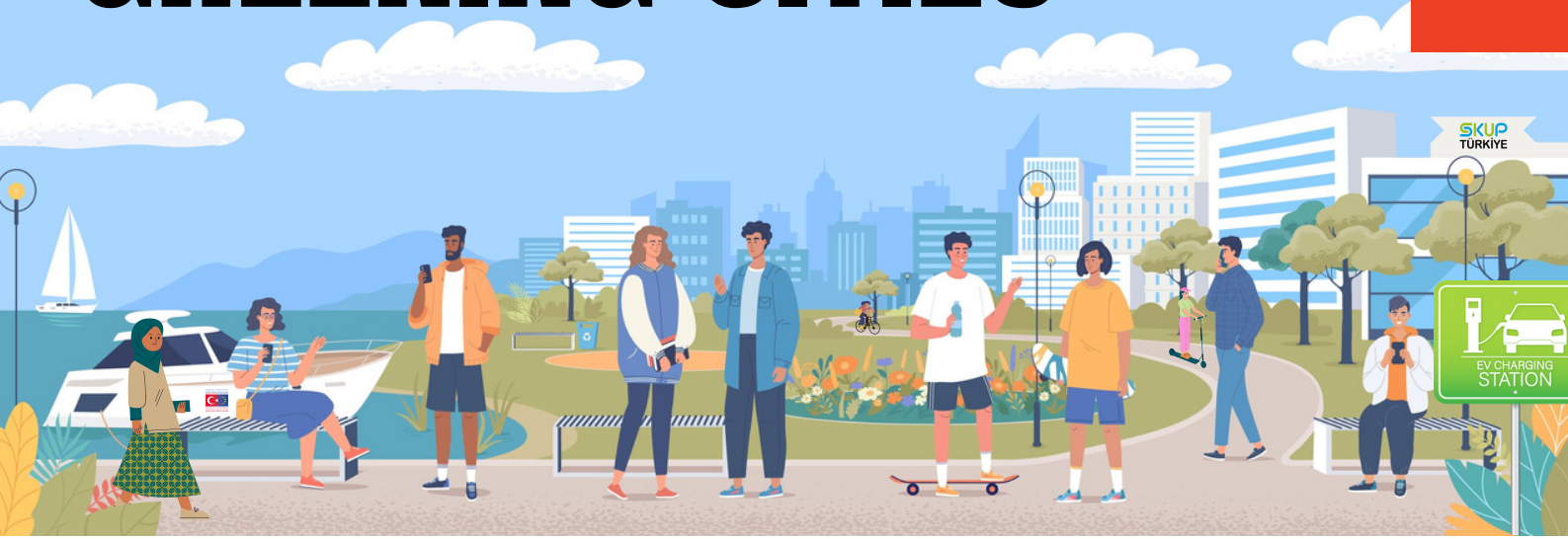


BUILDING BRIDGES, GREENING CITIES



FROM A CONVERSATION WITH
NAZAN KOÇAK
WOLFGANG BACKHAUS

ELABORATED BY
MARKO STANČEC

Project **SUMP Turkey** is designed to enable and promote the uptake and implementation of the SUMP concept in Turkish cities. It fosters continuous Policy Dialogue among Turkish stakeholders and EU counterparts. The forthcoming White Policy Paper (2030-2050) will address current and future issues, offering recommendations aligned with national and EU strategies.

In a bid to foster the implementation of Sustainable Urban Mobility Plans (SUMP) across Turkish cities, Project **SUMP Türkiye** takes the stage. This ambitious initiative aims to support Policy Dialogue and capacity building at both local and national levels, paving the way for a more sustainable urban mobility landscape. As part of its comprehensive approach, the project actively promotes European Mobility Week (EMW) and its associated activities throughout Türkiye.

With Turkish municipalities emerging as vital economic hubs brimming with dynamism, urban mobility challenges and solutions have taken centre stage in public discourse and local policies. 'Recognising the critical support required by planners and policymakers, the Ministry of Transport and Infrastructure, in collaboration with the European Commission, is co-funding the nationwide SUMP Türkiye program,' says Wolfgang Backhaus, Managing Director at Rupprecht Consult and Team Leader of the SUMP Türkiye project.



Wolfgang Backhaus

Managing Director and Team Leader
SUMP Türkiye project
Rupprecht Consult

'At its core, SUMP Türkiye represents a transformative shift from individual transport to sustainable, accessible, and inclusive modes of urban mobility,' continues Backhaus, 'by providing a robust support mechanism, the project empowers governance at all levels to enhance their capacities in embracing sustainable urban mobility within their policies. It is a testament to our collective commitment to driving structural change and championing the widespread adoption of sustainable urban mobility practices in Türkiye.'

Shaping Sustainable Cities: EU-Türkiye Policy Dialogue on Urban Mobility

In Türkiye, the pursuit of sustainable urban mobility is a collective endeavour that involves numerous stakeholders operating at national, regional, and local levels. These dedicated individuals and organizations play integral roles in the planning, implementation, and maintenance of urban transport systems across cities in the country.

For several years now, the government of Türkiye has taken proactive steps to promote sustainable urban mobility and positively impact the quality of life in Turkish cities and regions. Through various programs and activities, Türkiye has demonstrated its commitment to fostering more livable, accessible, inclusive, and environmentally friendly urban environments.

To support the promotion of sustainable urban mobility and knowledge transfer, SUMP Türkiye has established a permanent Policy Dialogue between Turkish stakeholders and European counterparts. Moreover, the establishment of Policy Dialogue has been supported by urban mobility situation analysis.

In particular, to ensure that permanent Policy Dialogue fosters mutually beneficial cooperation between Turkish and European stakeholders, the SUMP Türkiye Taskforce has been established so that it may provide a platform for peer-to-peer exchange on sustainable urban mobility planning with major European stakeholders, including networks of cities, EU institutions, and expert groups dealing with SUMP, as well as enable synergies and cooperation to access European funding opportunities and Research & Innovation projects.

Additionally, to ensure knowledge transfer of best practices from the EU, a portfolio of examples of different European regions and case studies will be shared with the Union of Turkish Municipalities, which gathers almost 1,400 municipalities.

Four principal meeting formats will be used for the Policy Dialogue:



STUDY VISIT

FOCUS GROUP



PEER-TO-PEER REVIEW

TRANSFERABILITY ANALYSIS



The Policy Dialogue work plan is established and updated on an annual basis and will include thematic coverage following the new EU Urban Mobility Framework.

**A reinforced approach to
TEN-T urban nodes**

**A reinforced approach to
SUMPs and mobility
management plans**

**Monitoring progress
sustainable mobility
indicators**

**Attractive public transport
services, supported by a
multimodal approach and by
digitalization**

**Healthier and safer mobility
a renewed focus on
walking, cycling and
micromobility**

**Zero-emission
urban logistics**

**Digitalisation, innovation and
new mobility services**

**Towards climate-neutral
cities: resilient,
environmentally friendly and
energy-efficient urban
transport**

**Increasing awareness,
citizen engagement and
assistance to local
authorities**

**Reformed and more
inclusive expert group on
urban mobility**

**Governance and
coordination**

**Funding and financing Urban
Mobility Projects**

Global outreach

Development of the White Policy Paper on Sustainable Urban Mobility (2030 – 2050)

The White Policy Paper aims to establish the national-level policy approach necessary for successfully adopting and implementing the Sustainable Urban Mobility Planning (SUMP) concept in Turkish cities.

It will outline the medium and long-term strategies required to achieve this goal, providing a comprehensive framework for sustainable urban mobility initiatives in the country.

Specifically, the White Policy Paper will sketch the actions to be taken toward the 2030- and 2050-time horizons. It will set forth the following main items:

- Current issues about sustainable urban mobility in Türkiye
- Possible future issues
- Outline of targets set by national and EU strategies (including the European 'Sustainable and Smart Mobility Strategy')
- Exploration and recommendations of steps to be taken to reach these targets
- Recommendations for a legislative package to mitigate any obstacles to the harmonization of Turkish and EU legislation (to be recommended by the UMT to the Turkish ministry)
- Proposals for concrete actions to be taken at national level, including an integral Action Plan in line with the EU mobility strategy

In a logical sequence, the White Policy Paper will build upon the situation analysis in the Green Policy Paper and continuous Policy Dialogue.

Per the situation analysis and Green Policy Paper, the present situation in Turkish cities will be described through the lens of the following five pillars. They will also be reflected in the White Paper:

Governance

Legal & Institutional Framework, Cooperation, Policies

Collective Mobility

Buses, trams, subways, minibuses, ferries, shuttle services; complementary services such as car, bike or ride-sharing, MaaS, micromobility

Active Mobility

Walking & Cycling (adequate infrastructure, livable streets)

Freight & Logistics

Supply chains, consolidation centres, last-mile logistics, and green transportation vehicles like cargo bikes or electric cargo vehicles

Space & Access

Public space re-allocation, congestion charge, car access restriction, car speed limit, parking policies



Nazan Koçak

Transport Planner and Team Leader
SUMP Türkiye project
SUMP Türkiye

Five key pillars for the Green Policy and White Policy Papers

Rupprecht Consult

As Wolfgang Backhaus concludes, 'The concept of SUMP has been embraced by the European institutions and placed at the forefront of their broader policy framework, aimed at achieving targets related to transport, health, social policy, and climate action in cities and regions. As a candidate for EU membership, Türkiye is following in the EU's footsteps by aligning its policies and practices with EU standards. It is a timely initiative for the SUMP Türkiye project to collaborate with cities and relevant government agencies, establish a permanent policy dialogue with EU counterparts, and produce a White Paper on sustainable urban mobility.'