



new mobility
Inner city Aachen

Dr. Armin Langweg
City of Aachen

Foto: Jens Stachowitz

www.aachen.de/vep

transformation of mobility and town

european mobility week 2020 at Theaterplatz



car free Theaterplatz

successful laboratory - political Go! - competition - decision -



Aachens city always in change

u.a.

1969: first pedestrian zone

1998: car free Elisenbrunne

2009: „opening“ Elisengarten

residential trips in 2017:

30 % walking

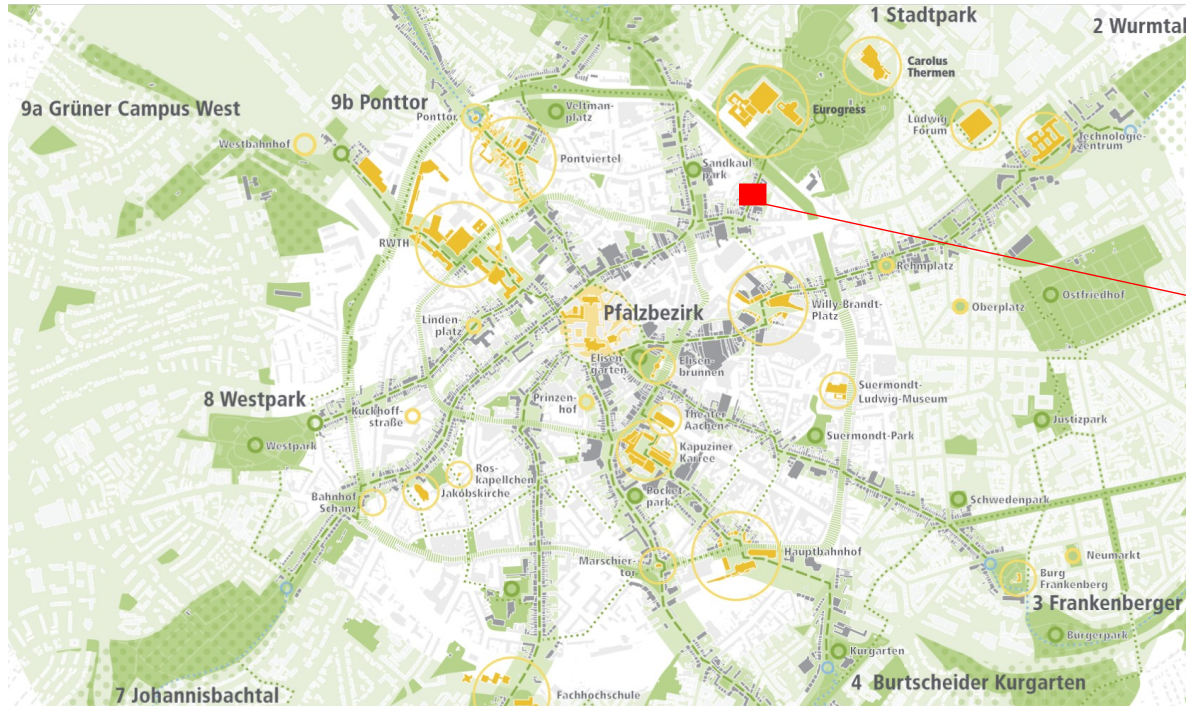
11 % cycling

13 % pt

46 % cars

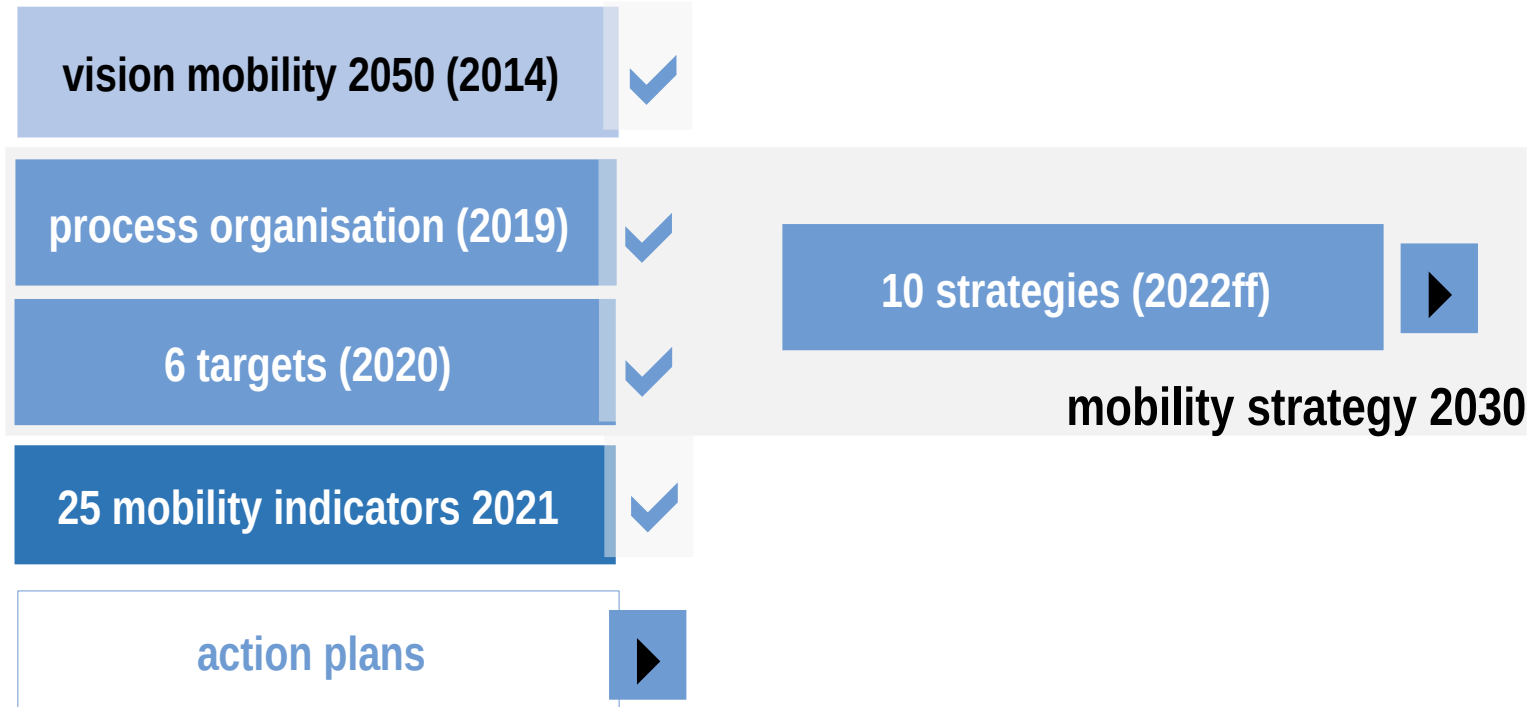


„Premiumfußwege“ comfortable walkways from city to parks



SUMP Aachen

process with modular plans



10 strategies for 6 targets

transport safety
environmental friendly
short trips
accessibility
comfort
affordability

walking	x	x	xx		xx	
cycling	x	x	xx		xx	
pt		x		xx	xx	xx
car	x	xx		xx		xx
freight traffic		xx				
e-mobility		xx				
mobility management		x				xx
transport safety	xx					
accessibility				xx		
street design			xx		xx	

In addition:
mobility strategy
innercity

living healthy
and quiet

work and deal
successful

recreation and
pleasant residence

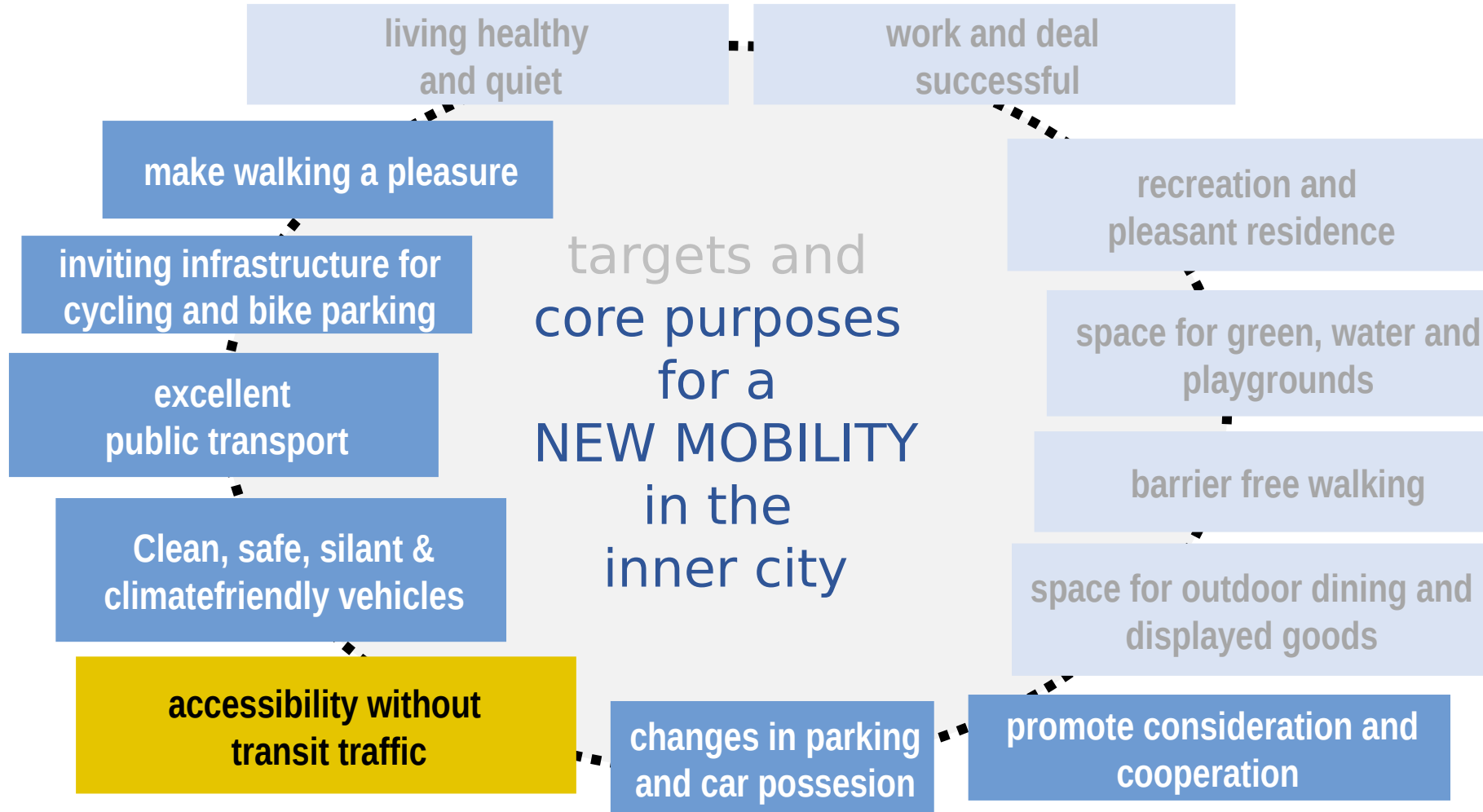
space for green, water and
playgrounds

barrier free walking

space for outdoor dining and
displayed goods

adequate
accessibility

targets
for a
NEW MOBILITY
in the
inner city



Learning from others

- Circulation plan Gent
- implemented in 2017
- presentation from Ann Plas in Aachen in Nov. 2022



Suchen



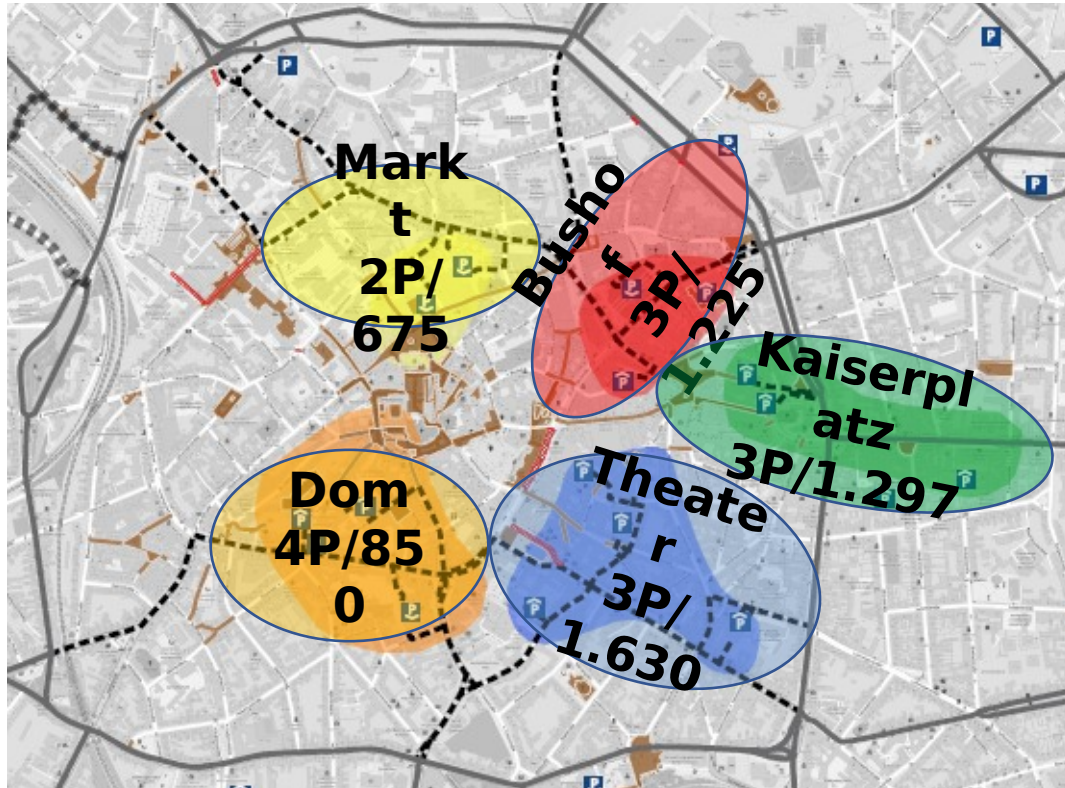
Mobility Forum Aachen - Circulation Plan - City of Gent - English version

ring roads Aachen and Gent



park guidance system with 5 zones

first system 1971 // new system 1991 // update



City parking

15 buildings in 5 areas

7.200 places

Am Dom: 1 € / 30 Min.

Kaufhof: 2,5 € / 60 Min.

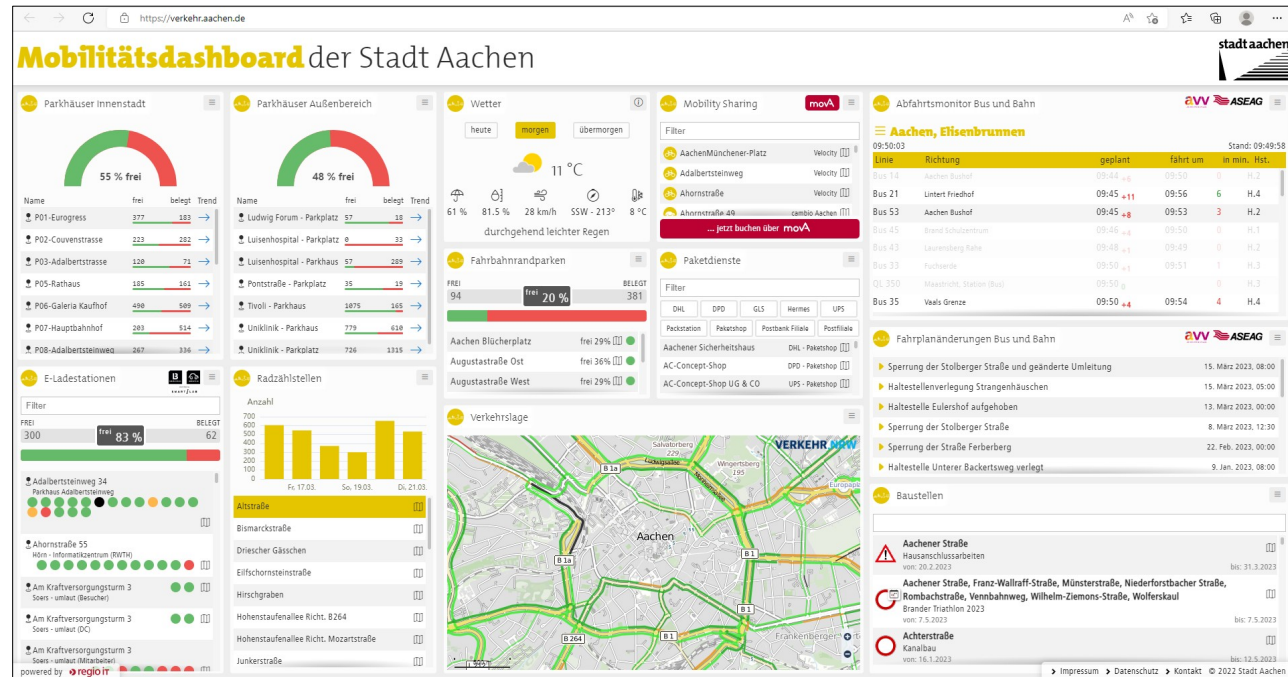
home parking APAG:

16pm to 9am: 43 € / month

mobility dashboard verkehr.aachen.de

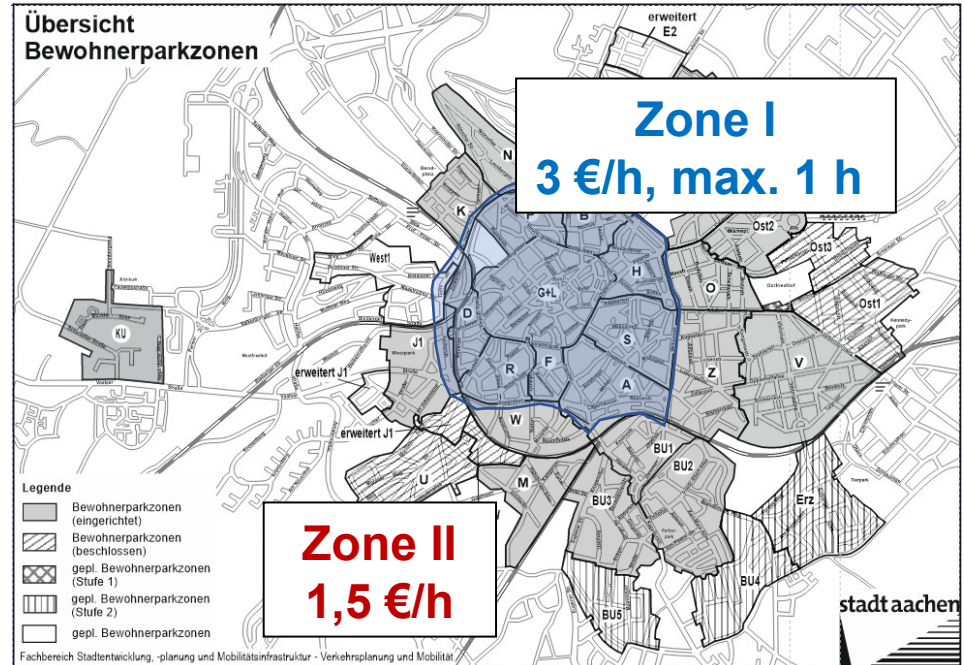
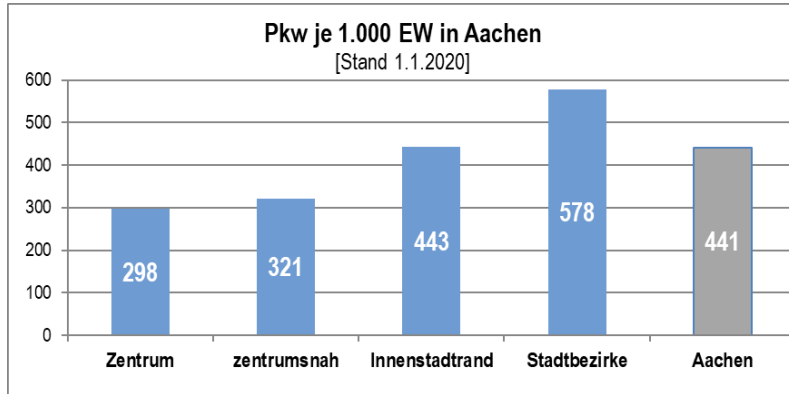
amongst others

- status charging stations
- free parking lots
- traffic jam (TomTom)
- realtime data pt & sharing offers
- bicycle counting data



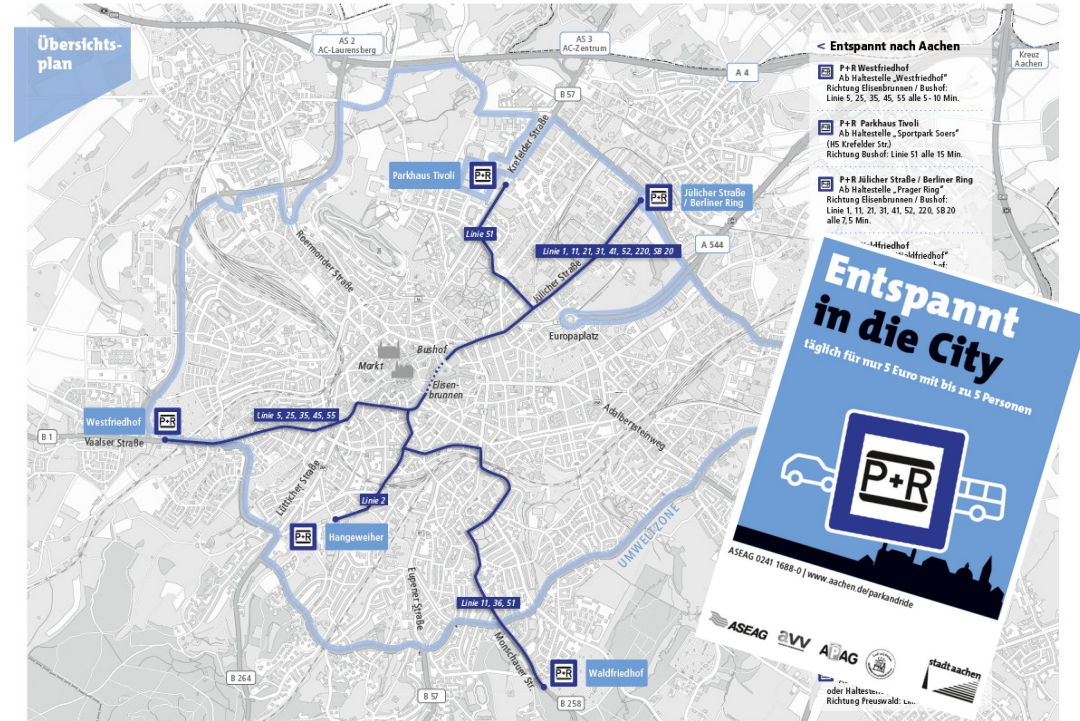
on street regulation and tariffs for parking in 2023

- tariffs for short parking
 - inner city: 3 € min. & max. coin slot (1 h)
- e-cars: 2 h for free
- resident parking: 30 € / a \square 120 € / a



Park + Ride Aachen with buses

- 5 x Park+Ride
 - Tivoli: 1.200 parking lots
 - others: 450
- 1 ticket, 5 people, 5 € for park and ride



priority cycling network

aim: safe and comfortable cycling

🇩🇪 Mobilität in Aachen



„Priorität in der Innenstadt hat der Mensch und nicht das Blech“

19. DEZEMBER 2022 UM 08:37 UHR | Lesedauer: 3 Minuten



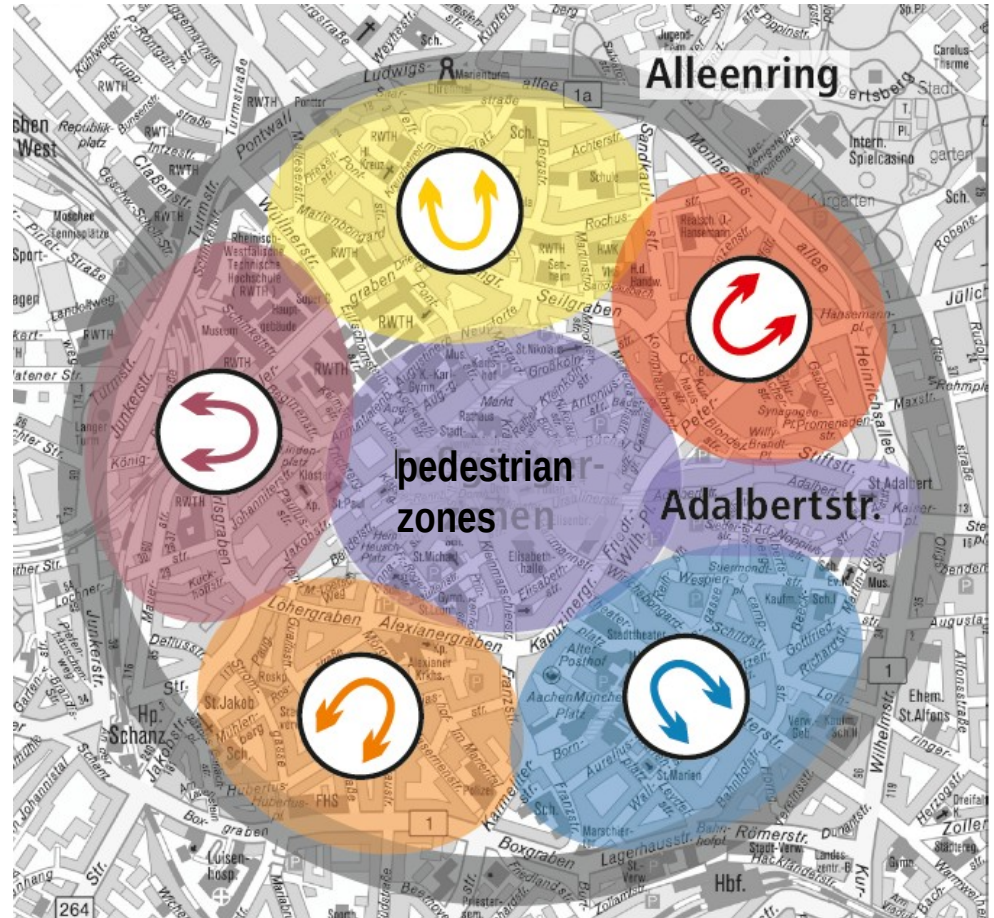
Der Grabenring – im Bild der Templergraben – soll den Radverkehr „verteilen“. Foto: Harald Krömer



circulation plan

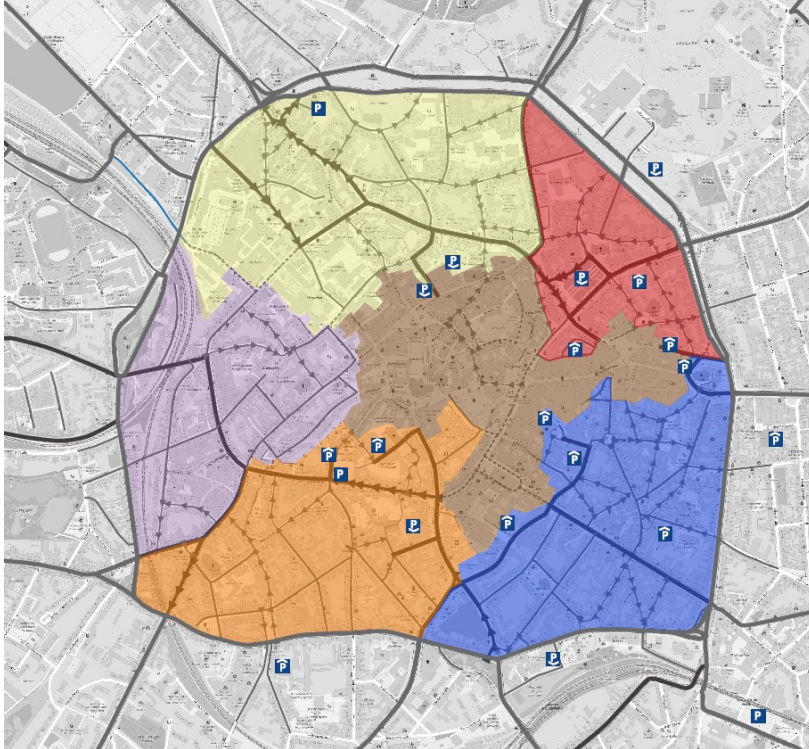
political task since Dec. 2020

- max. speed 30 km/h (since 2019)
- avoid transit traffic with exceptions for residents, commerce ...
- better conditions for walking, cycling and public transport



concept

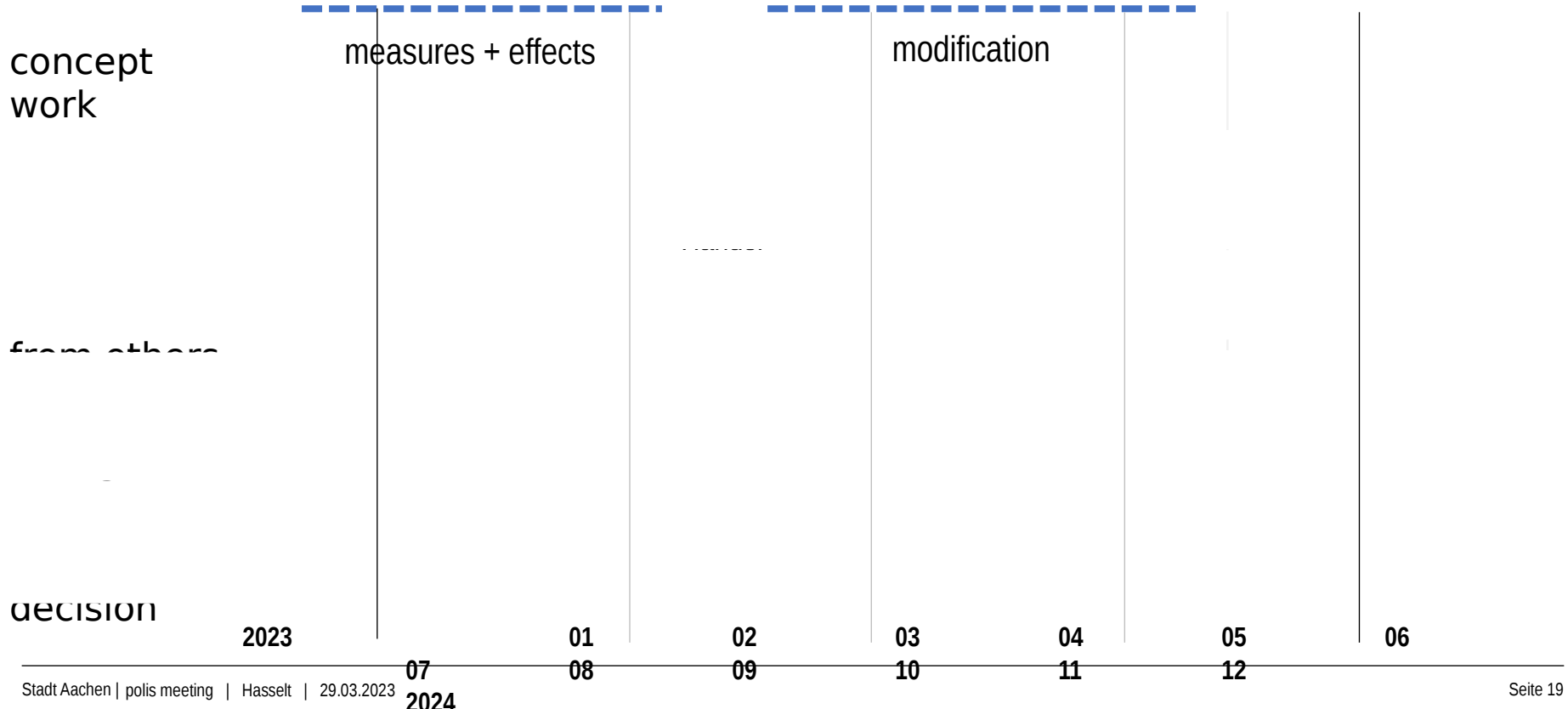
five zones with separate accessibility



- Per zone
 - parking spaces and residents cars
 - number of inhabitants and shops and resulting trips
 - accessibility hotels
- main challenges
 - „exception rules“ for delivery and nursing services ...
 - estimation of modal shift
- communication planning
 - explain concept and measures
 - spotlight on the benefits
 - Using avatars: Who will be concerned and why?

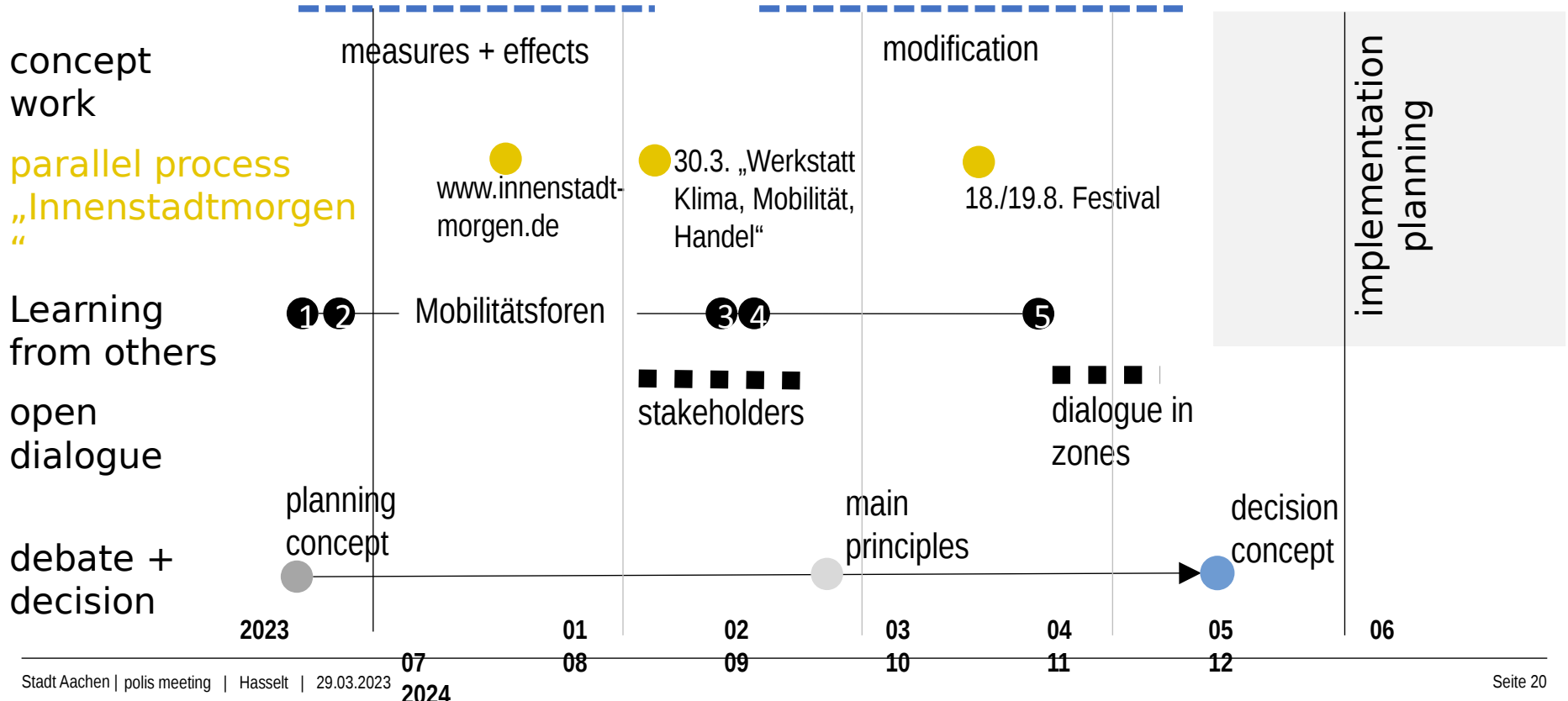
time line 2023

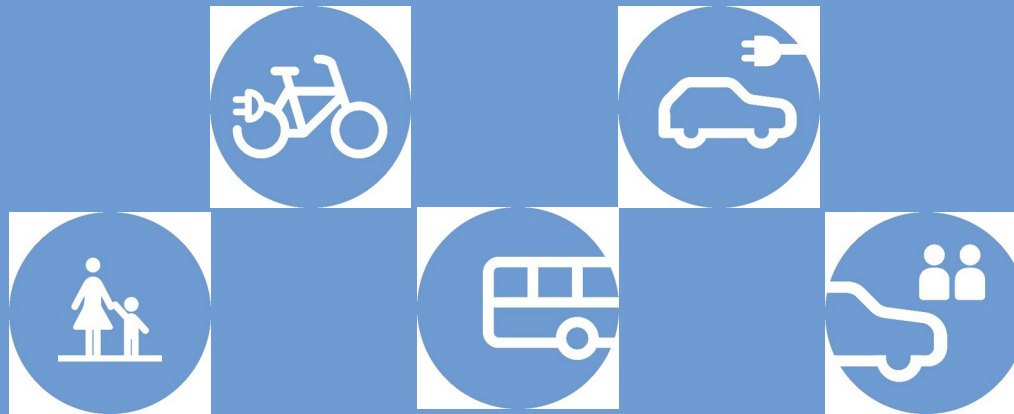
circulation plan Aachen



time line 2023

circulation plan Aachen





Stadt Aachen

Fachbereich Stadtentwicklung, -planung und Mobilitätsinfrastruktur

Projektleitung: Dr. Armin Langweg

Verkehrsentwicklungsplanung

Tel. 0241-432-6176

armin.langweg@mail.aachen.de

aachen.de/anreise

aachen.de/clevermobil

aachen.de/vdp