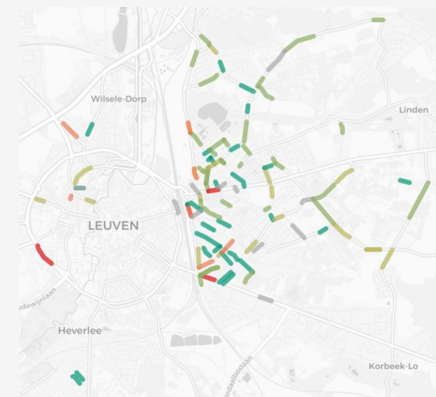
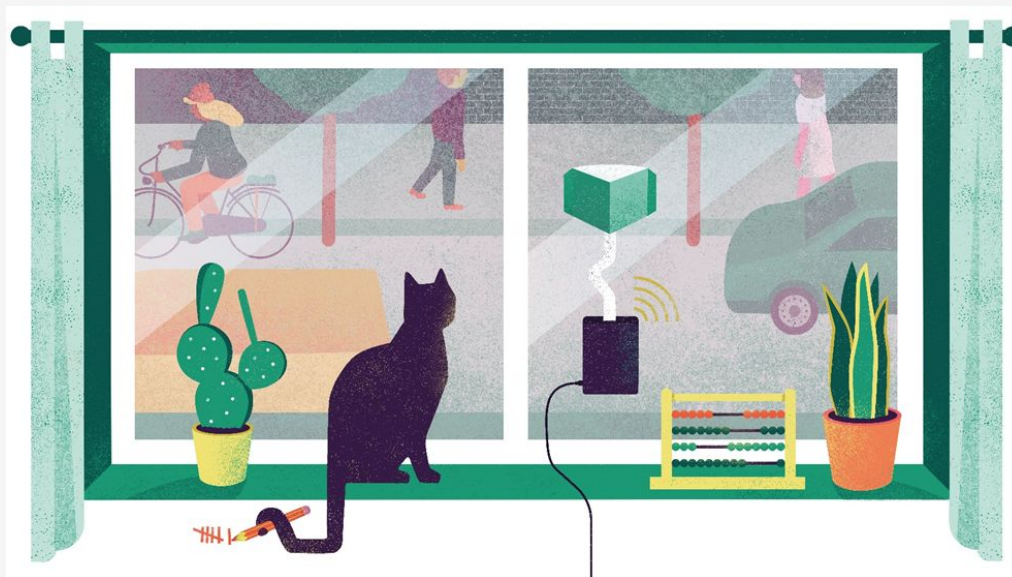


# WECOUNT empowered by Telraam Enabling citizens to initiate a policy-making process with fully automated traffic data collection

03/03/2023 - Euregio Mobility Workshop Aachen



# Introducing: What's WeCount? What's Telraam?

- Low-cost traffic counting sensor + open data platform ([www.telraam.net](http://www.telraam.net))
- Continuous traffic counting of 4 modes: pedestrians, bikes, cars, large vehicles
- Citizen science: Installed, owned, managed and data interpretation by citizens



# Introducing: What's WeCount? What's Telraam?

- WeCount (Citizens Observing Urban Transport; 11/2019-11/2021) was a Horizon 2020 funded project, part of a Science with and for Society call (SwafS)
- Citizen science project empowering citizens to take a leading role in the production of data, evidence and knowledge around mobility in their own neighbourhoods
- 5 case studies, citizen science pilots, using Telraam



Univerza v Ljubljani  
Fakulteta za arhitekturo



The WeCount Project has received funding from the European Union's Horizon 2020 research and innovation programme under grant agreement No. 872743



# Telraam, the sensor



V1



S2



**Purposely build Telraam**

- Custom PCB
- Designated AI chip
- IoT framework
- USB C-powered

**Built-in camera**

- Wide angle camera
- Automatic region of interest selection

**LCD display**

- Interaction with device
- Instant visualization of counting data

**Data connection**

- AI counts on device
- No images saved
- No wifi needed

**AWS server**

- Classification
- Agrégation de données
- API

# Together with citizens



**Telraam** @TelraamTelraam · Oct 10, 2021

Traffic volumes around schools are a major concern for citizens in Dublin. The Dublin case study is providing traffic and air quality monitors to local schools to help them collect objective measurements outside the school gate. @WecountH

[we-count.net/news/dublin-sc...](https://we-count.net/news/dublin-sc...)



# In partnership with civilians

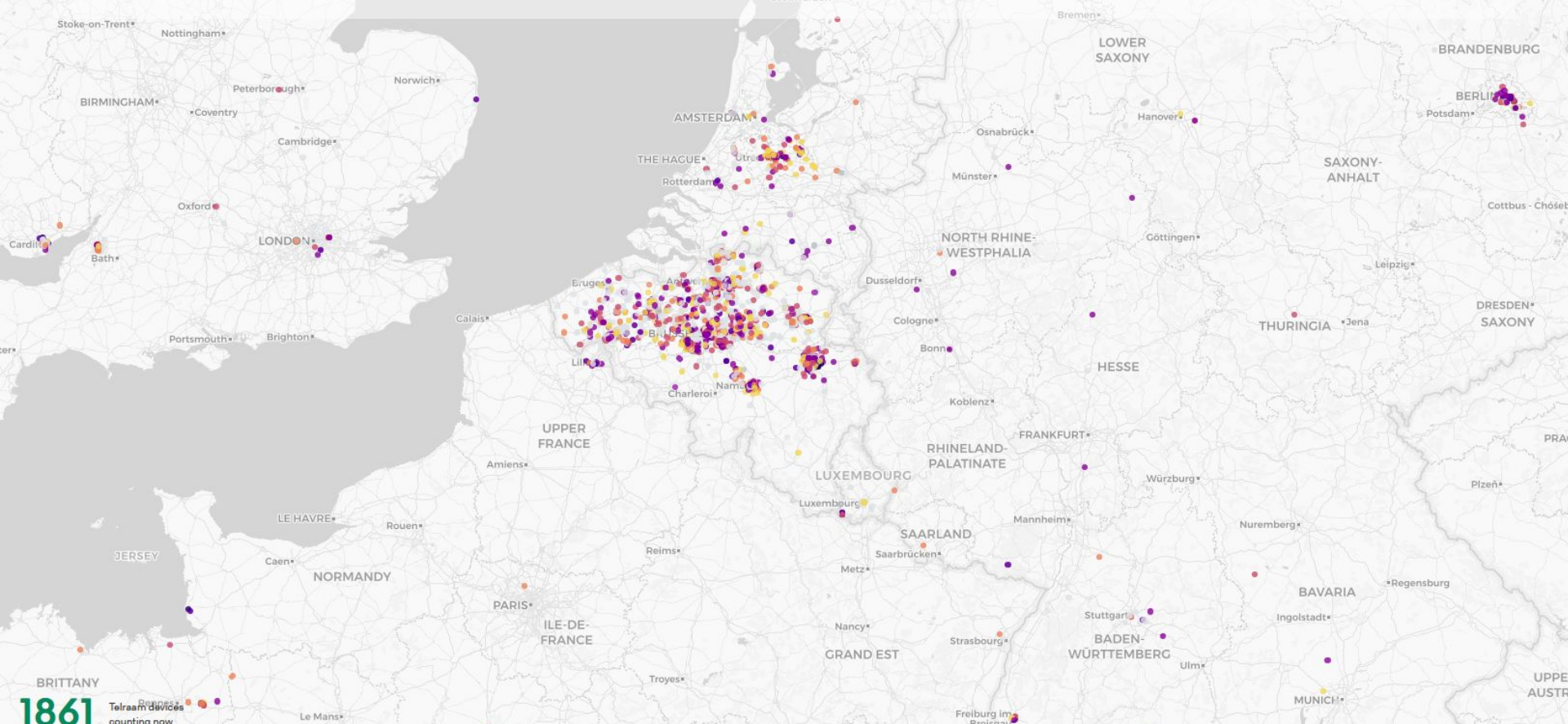
Possibility to set up networks of grassroots (NGOs) and top-down (village - district - city - national bodies) measurement networks

- ✓ Installation possible in every home (that complies to the technical requirements).
- ✓ Gives citizens a key role, involving them in the process (public engagement + citizen science)
- ✓ Objective tool to support needs and intuitions (*"There are too many cars here in the morning..."* But what does "too many" mean, and is it really not in line with the infrastructure and traffic plans?)
- ✓ Provides the opportunity to assess and long-term monitor conditions at local level





# Telraam, the open data platform - publicly available



1861 Telraam devices counting now



```
{
  "status_code": 200,
  "message": "ok",
  "report": [
    {
      "segment_id": 348917,
      "date": "2020-10-30T07:00:00.000Z",
      "interval": "hourly",
      "uptime": 0.73,
      "heavy": 78.0821917808,
      "car": 619.1780821918,
      "bike": 263.0136986301,
      "pedestrian": 72.602739726,
      "heavy_lft": 52.0547945205,
      "heavy_rgt": 26.0273972603,
      "car_lft": 202.7397260274,
      "car_rgt": 416.4383561644,
      "bike_lft": 156.1643835616,
      "bike_rgt": 106.8493150685,
      "pedestrian_lft": 41.095890411,
      "pedestrian_rgt": 31.5068493151,
      "direction": 1,
      "timezone": "Europe/Brussels",
      "car_speed_hist_0to70plus": [
        15.9292035398,
        44.2477876106,
        29.203539823,
        5.9734513274,
        1.5486725664,
        0.4424778761,
        0.6637168142,
        1.9911504425
      ],
      "car_speed_hist_0to120plus": [
        5.7522123894,
        10.1769911504,
        19.6902654867,
        24.5575271239
      ]
    }
  ]
}
```

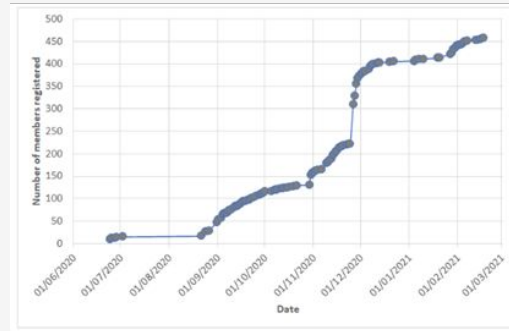
# Telraam, the open data platform (API) - publicly available

## WeCount research question:

**How to set up an inclusive, durable, self-supporting citizen science community (“ecosystem”), and realize policy change?**

# The WeCount method

1. Scoping & community building
2. Co-design
3. Data collection
4. Data analysis & awareness
5. Reflection & policy impact

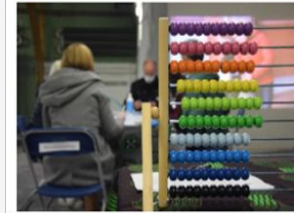
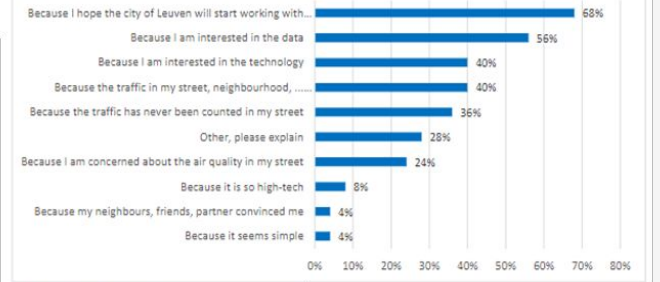
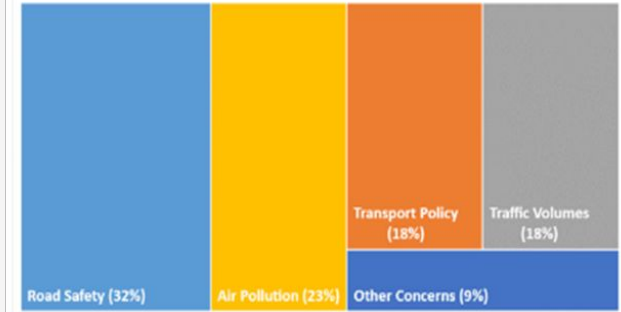


# The WeCount method

1. Scoping & community building
2. Co-design
3. Data collection
4. Data analysis & awareness
5. Reflection & policy impact

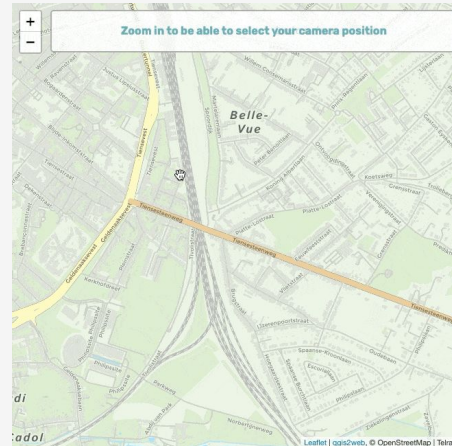
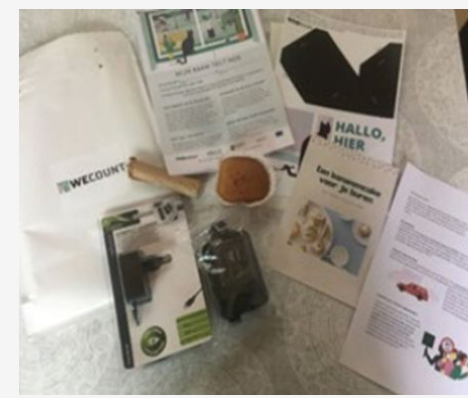


GRANGETOWN: CONCERNS AND MOTIVATIONS



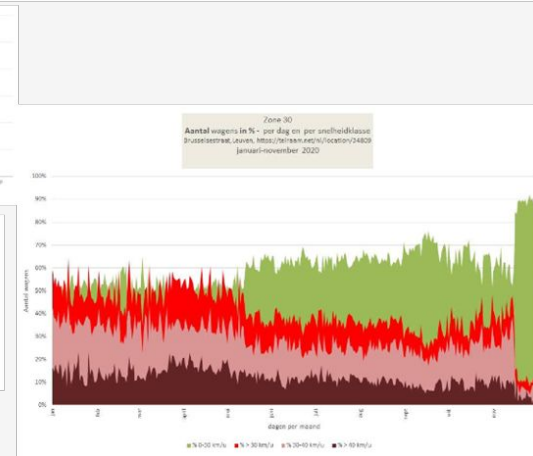
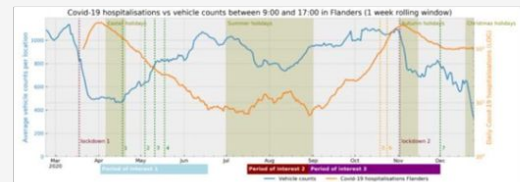
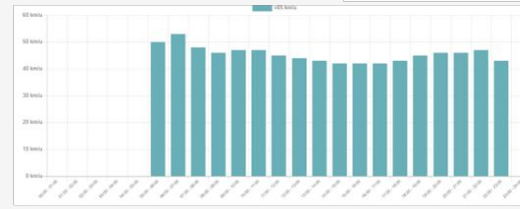
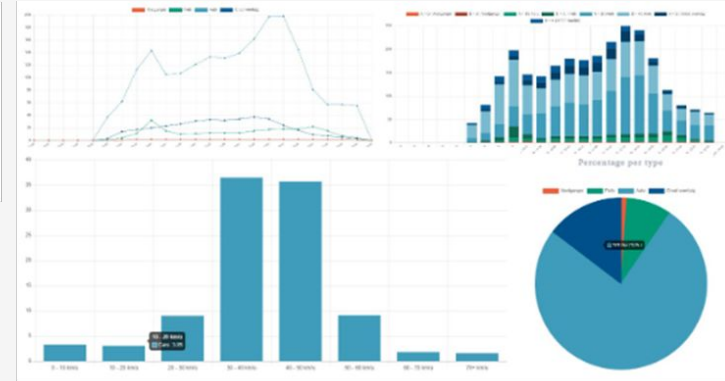
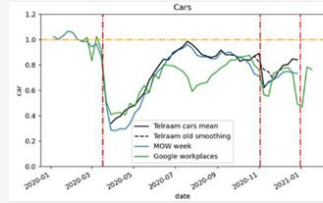
# The WeCount method

1. Scoping & community building
2. Co-design
- 3. Data collection**
4. Data analysis & awareness
5. Reflection & policy impact



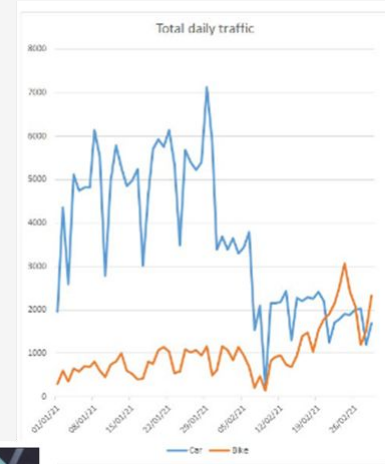
# The WeCount method

1. Scoping & community building
2. Co-design
3. Data collection
- 4. Data analysis & awareness**
5. Reflection & policy impact



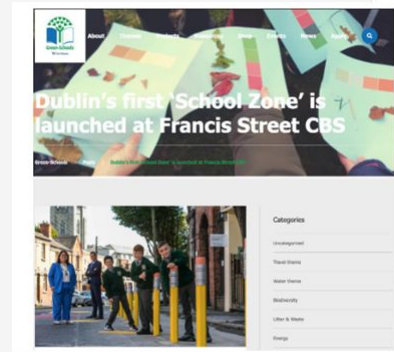
# The WeCount method

1. Scoping & community building
2. Co-design
3. Data collection
4. Data analysis & awareness
- 5. Reflection & policy impact**



**El tancament dels dies 4 i 5 va triplicar el trànsit als carrers secundaris**

El comptador del projecte We Count del carrer Belver va registrar en el tancament extra de carrers dels 4 i 5 de gener el triple de trànsit de cotxes, motos i bicicletes pels desviaments aplicats en aquest cas de Torrent de l'Oliva. Dijous 7, per exemple, hi va haver uns 1500 vianants, 300 bicis o motos i 200 cotxes; en canvi, dimarts 5 van ser 1500 vianants, 800 bicis o motos i 600 cotxes.



**Eva Elliot**  
Cardiff  
Eva is a 60-year-old honorary research fellow at Cardiff University School of Social Sciences. Eva is one of WeCount's local champions.

**Mark Barrett**  
Cardiff  
Mark (58) lives near the centre of Cardiff, working as a teacher at a local primary school. Mark is also a WeCount local champion.

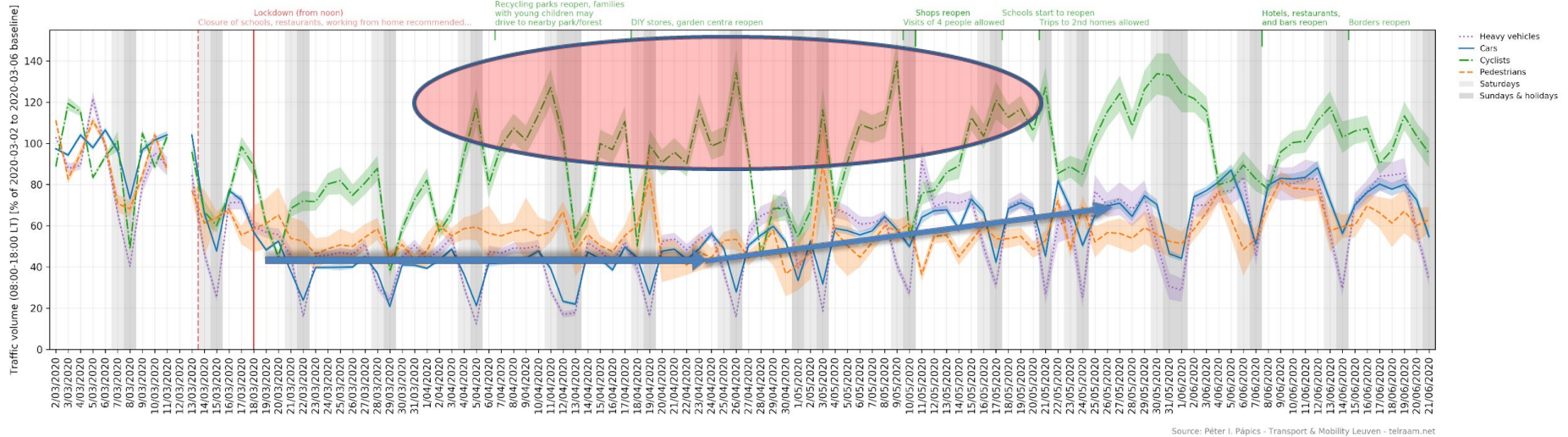


# Case studies



# Covid-19 lockdown impact on Belgian traffic

(analysis of data exported with API)



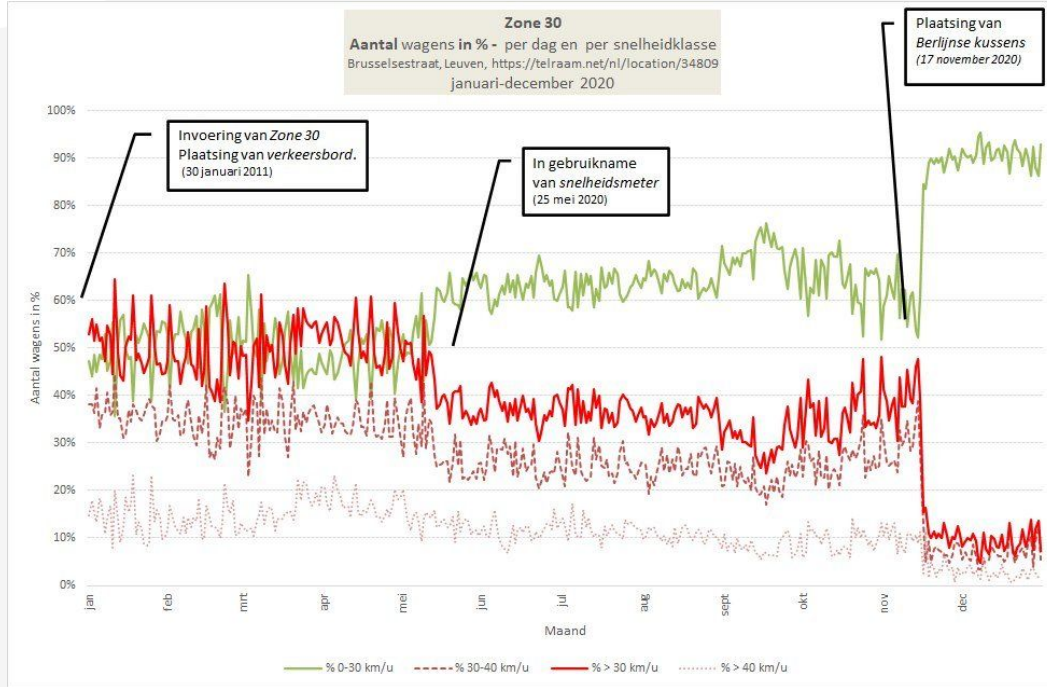
Impact of:

(a) placement of digital speed sign

(b) placement of Berlin cushion on average speed in zone 30.

# Traffic speed reduction after Telraam

(speed below and above 30 km/h %)



Impact of:

- (a) placement of digital speed sign
- (b) placement of Berlin cushion on average speed in zone 30.

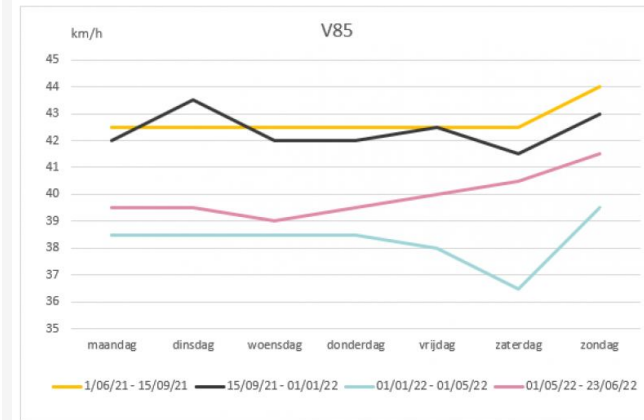
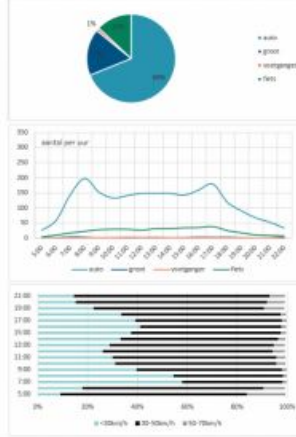
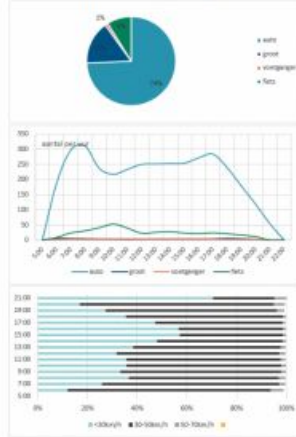
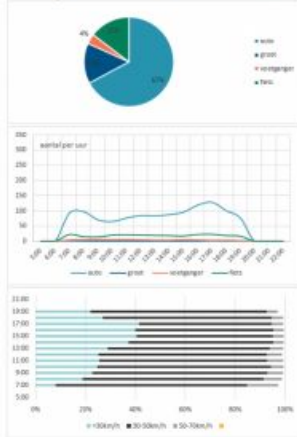
# Tracking impact of construction works

June 2021 - Sept 2021

Sept 2021 - Jan 2022 (hooftide)

Jan 2022 - May 2022

May 2022 - July 2022



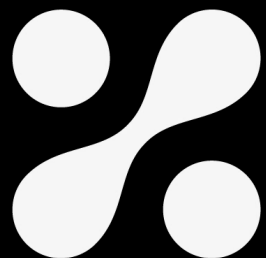
# CONCLUSION - WeCount key learnings

*Technology/equipment needs to be simple!*

*“The more involved you are, the more likely you are to act”*

*Citizen science  $\neq$  passive data collection*

*If you start a citizen science project, commit to it or you will frustrate participants!*



# Telraam

Algemene vragen:  
[info@telraam.net](mailto:info@telraam.net)

Diestsesteenweg 71  
B-3010 Leuven

[www.telraam-api.net](http://www.telraam-api.net)  
[www.telraam.net](http://www.telraam.net)

# BACKUP SLIDES





## Technical criteria to install Telraam

- ✓ WiFi connection
- ✓ Clear view (= no flyscreen, no shutters, no big trees, ...)
- ✓ 1st floor
- ✓ Not too far from the street (max. +-15m)
- ✓ Camera pointed to the middle of the road
- ✓ Not near traffic lights or crossroad
- ✓ No movement not related to traffic

**Around 65% of the houses are suited to install a Telraam**

**Privacy: not ANPR, no face recognition, no license plate recognition, camera legislation not applicable, no video images, image processing 'on the edge'**



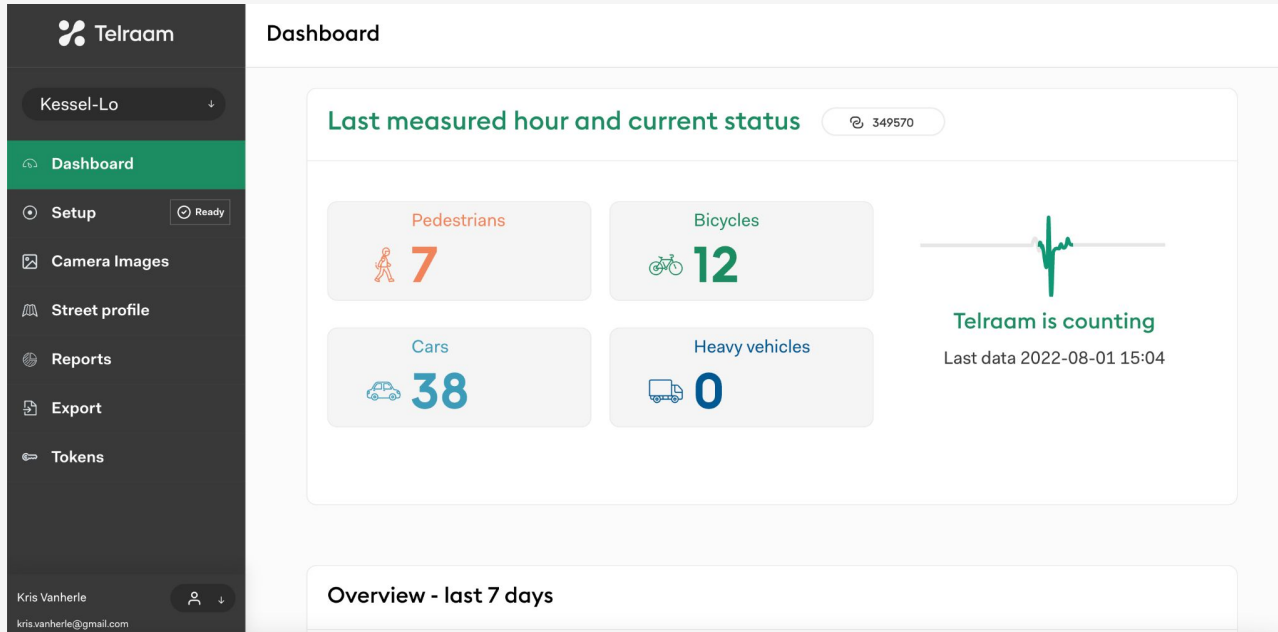




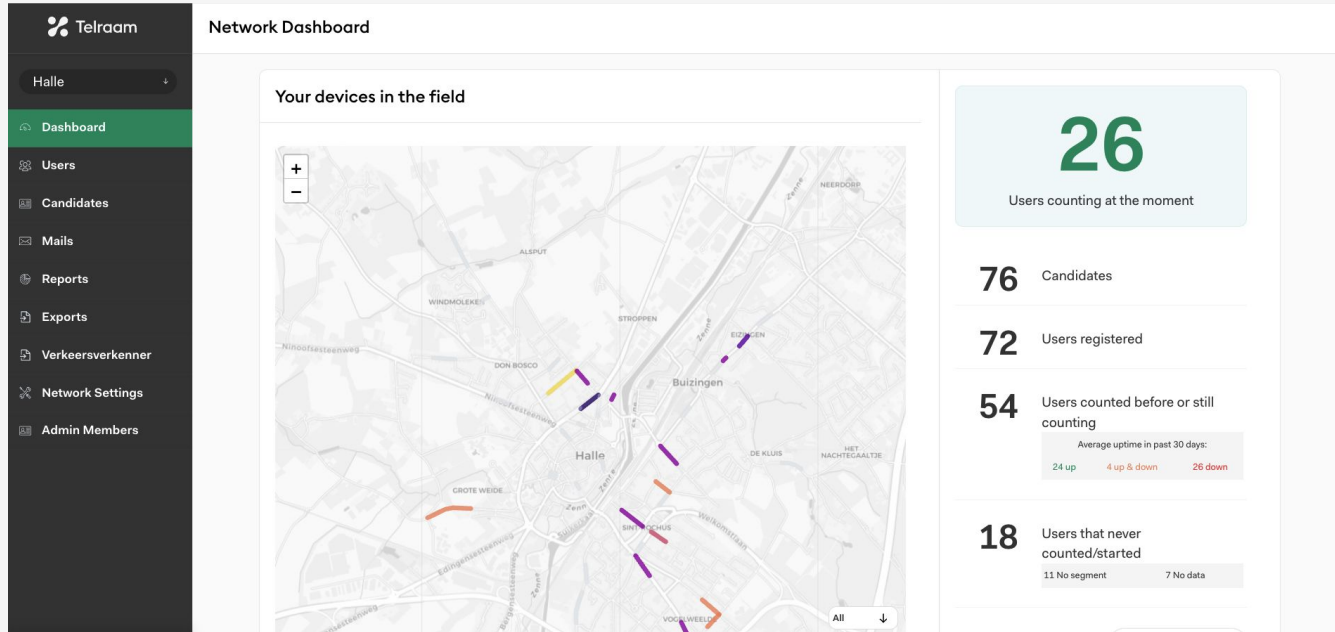
# Telraam, the dashboard

# (1) Personal Telraam dashboard - own data, settings, ...

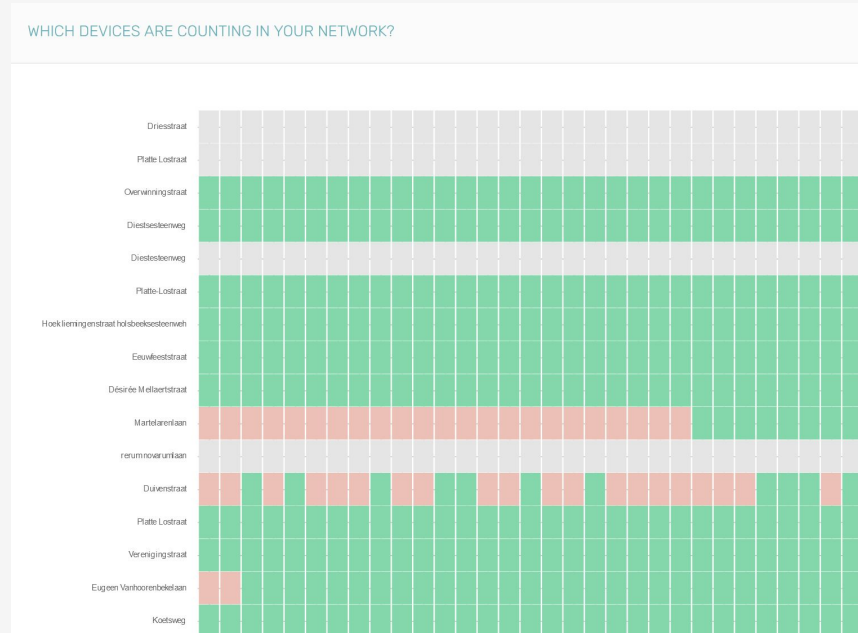
...



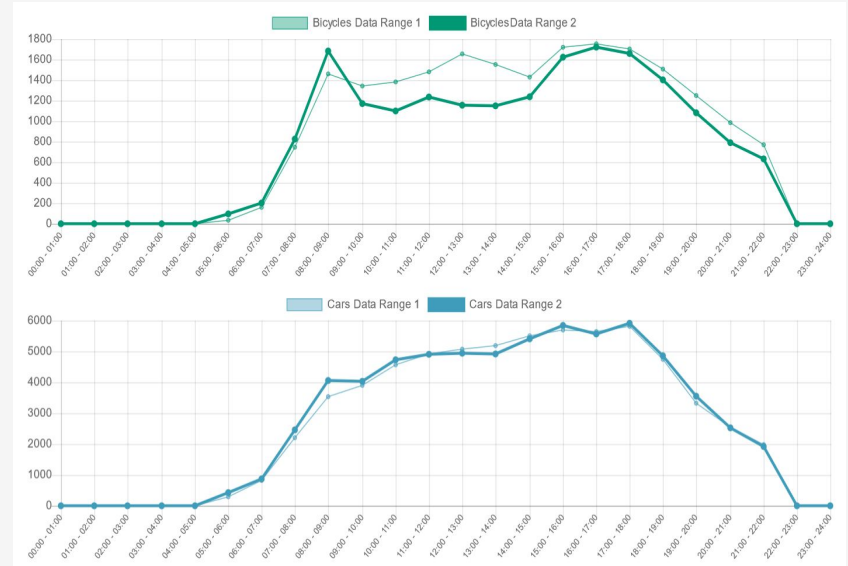
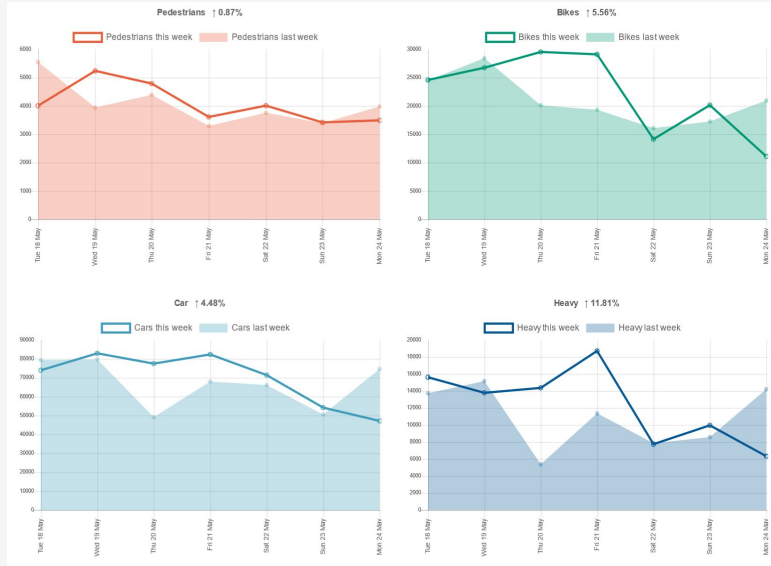
## (2) Network administrator dashboard



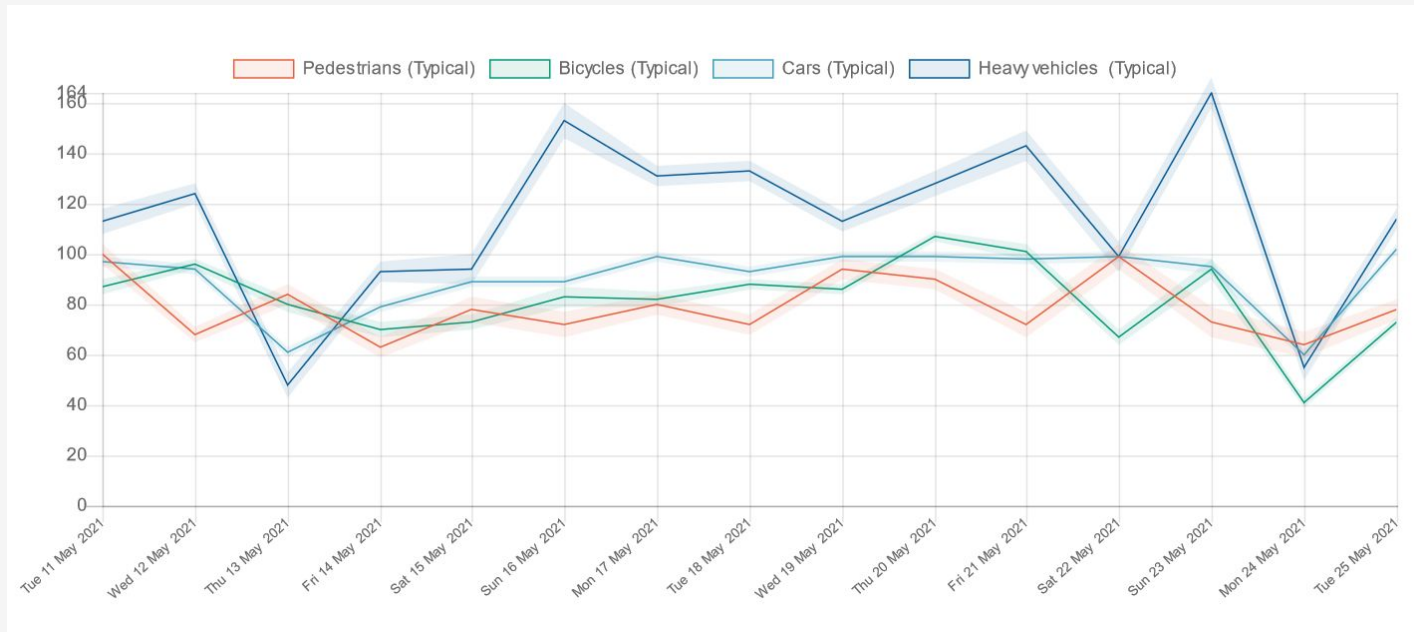
## (2) Network administrator dashboard: statuses



# (2) Network administrator dashboard: relative data series



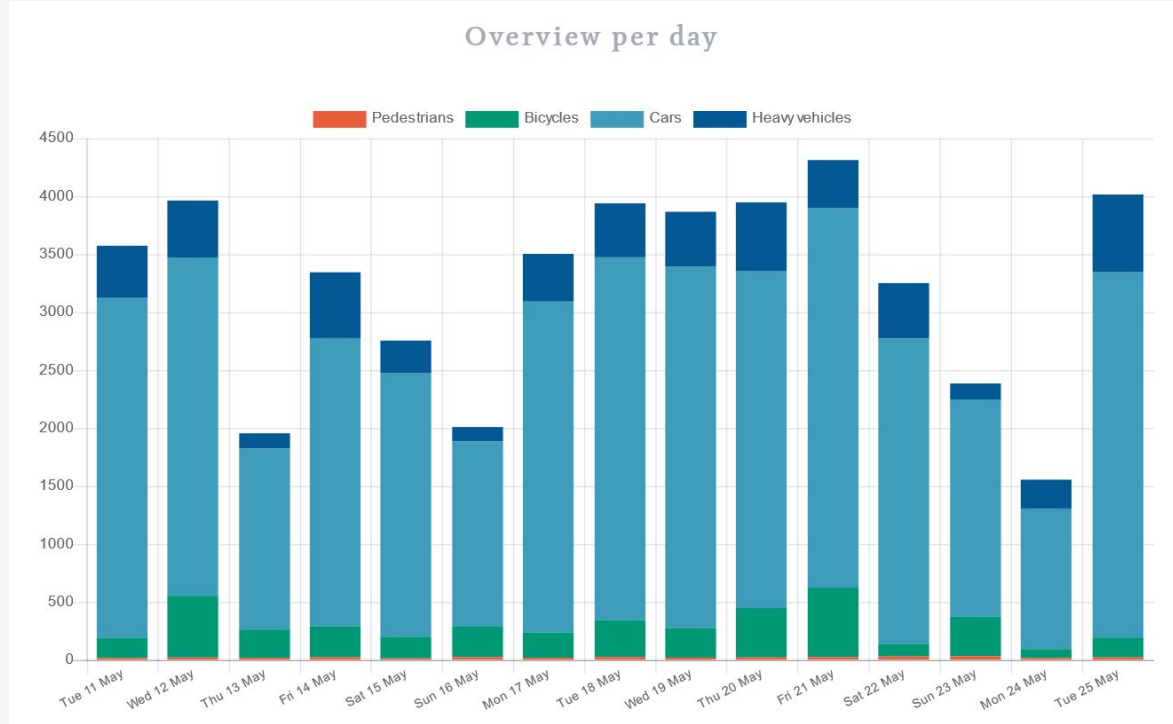
## (2) Network administrator dashboard: comparison of different time-intervals





**The data**

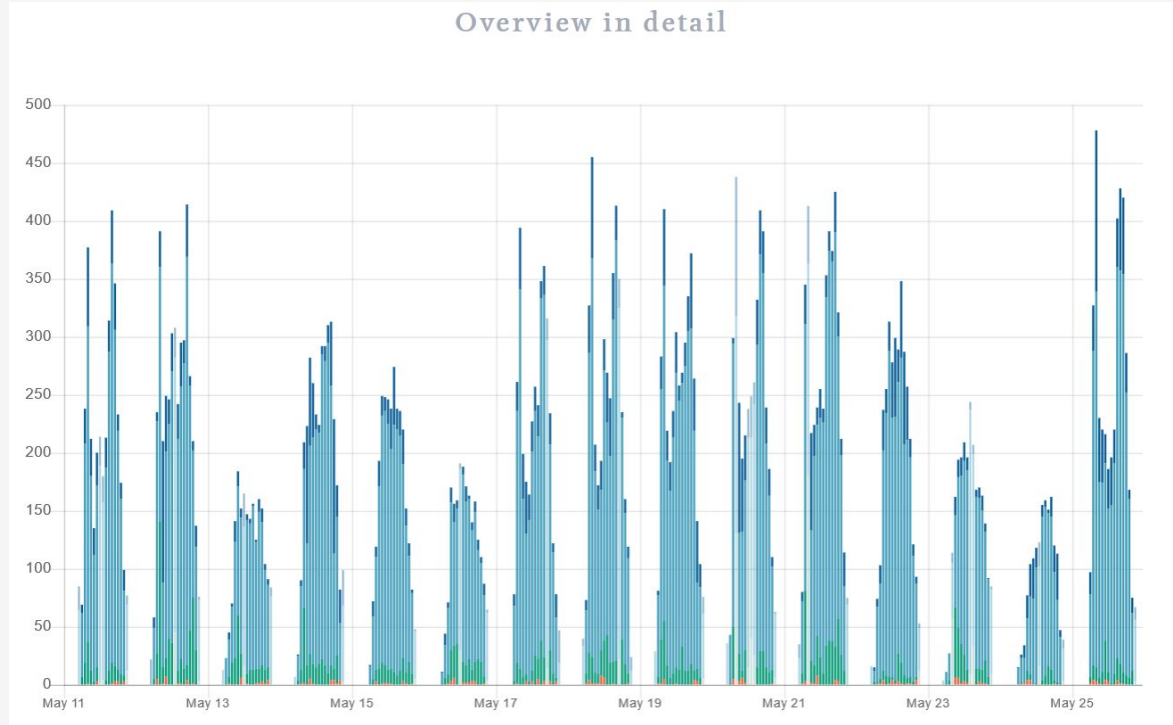
# Daily traffic



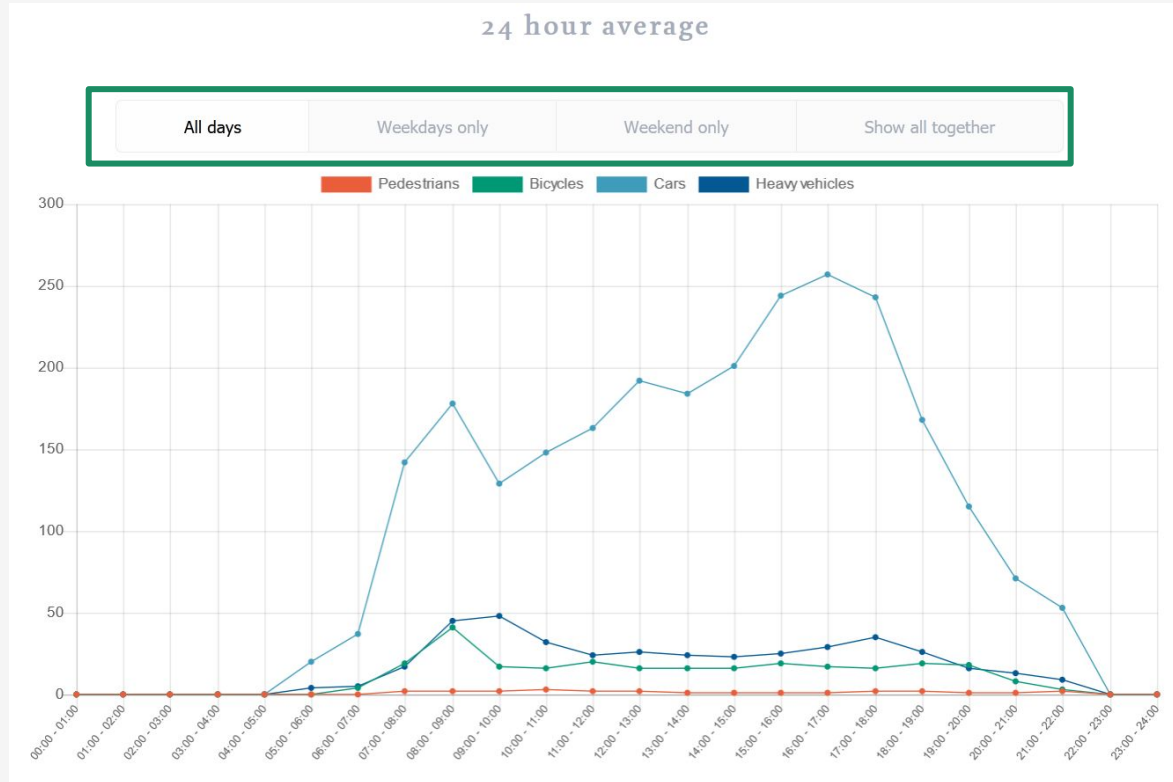


# Hourly traffic

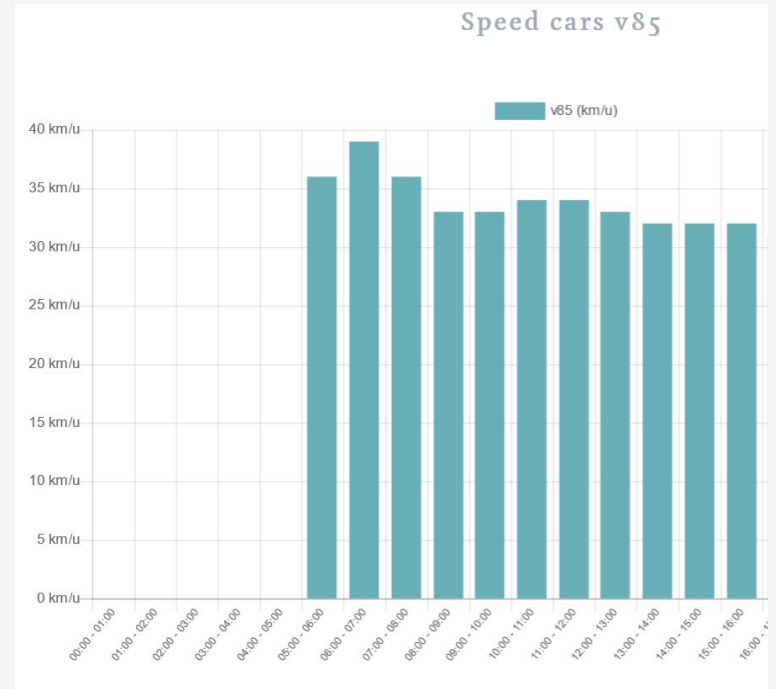
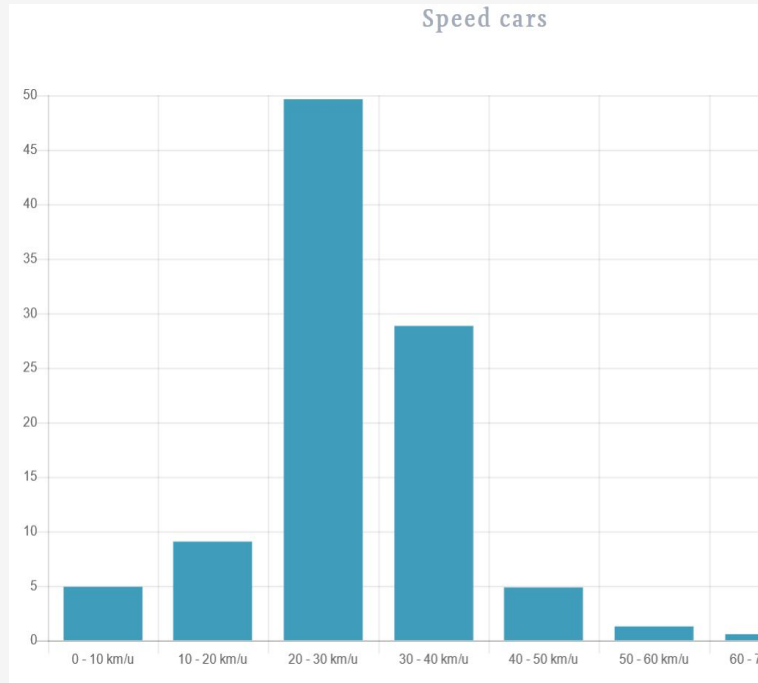
Morning and evening peaks during weekdays



# Average turnover



# Speed of cars: histogram and V85



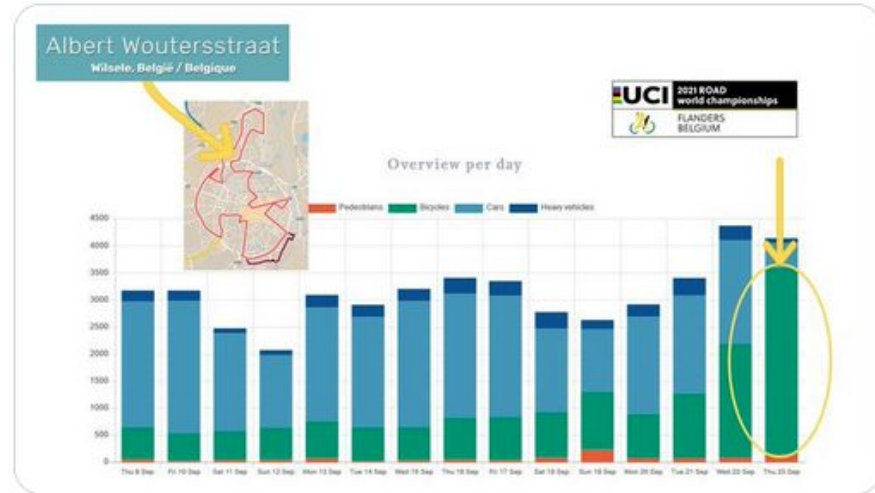
# Worldchampionship cycling (Leuven, BE)



**Telraam** @TelraamTelraam · 23 sep.

De wielervliefhebbers zijn deze namiddag aan de 'Flanders 2021 Ride Leuven' begonnen en dat zorgt voor 10 keer zoveel fietspassanten als op een normale donderdag in de Albert Woutersstraat in Wilsele. Volg het zelf via onderstaande link 📍

[telraam.net/en/location/90...](https://telraam.net/en/location/90...)





# **Timeline of Telraam project**

# Timeline of a typical Telraam network

