

**POLIS**

CITIES AND REGIONS FOR TRANSPORT INNOVATION

ANNUAL  
CONFERENCE

**2022**

30 November  
1 December, 2022  
Brussels, Belgium



#POLIS2022

# Canalejas 360: Strategic mobility hub in Madrid

Session 4G. More multimodal moves? The potential of mobility hubs



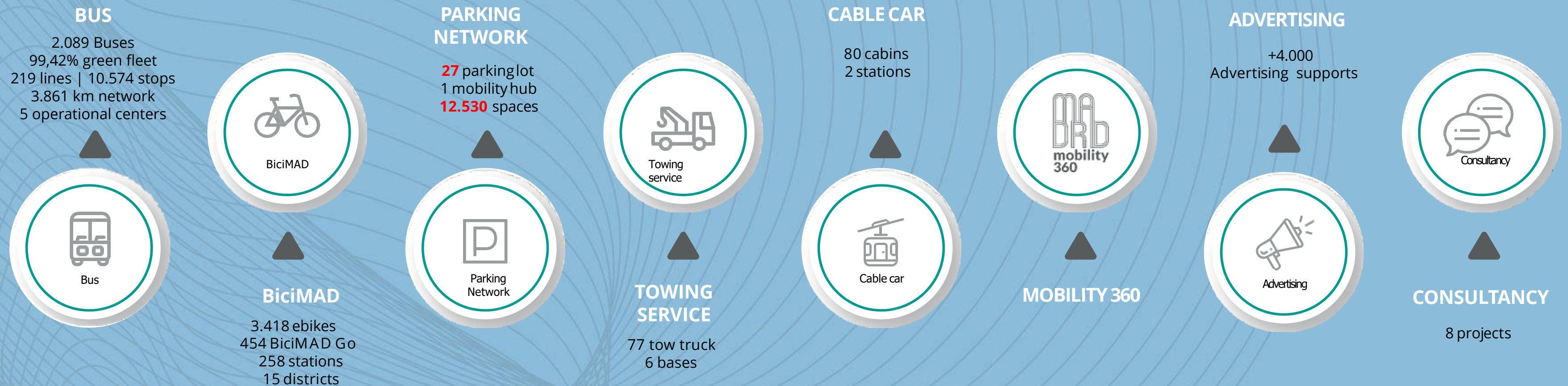
*Sergio Fernández Balaguer,  
Head of International Department, EMT Madrid*





## EMT 2021

EMT is the reference of surface mobility in the city of Madrid. It count with **9.816 workers**, **8 business lines** y **5 Operational Centers** that enables the company to provide integrated, client-oriented services that foster a sustainable and efficient mobility.





# POLIS

CITIES AND REGIONS FOR TRANSPORT INNOVATION

ANNUAL  
CONFERENCE

# 2022

30 November  
1 December, 2022  
Brussels, Belgium



#POLIS2022



# LOCATION

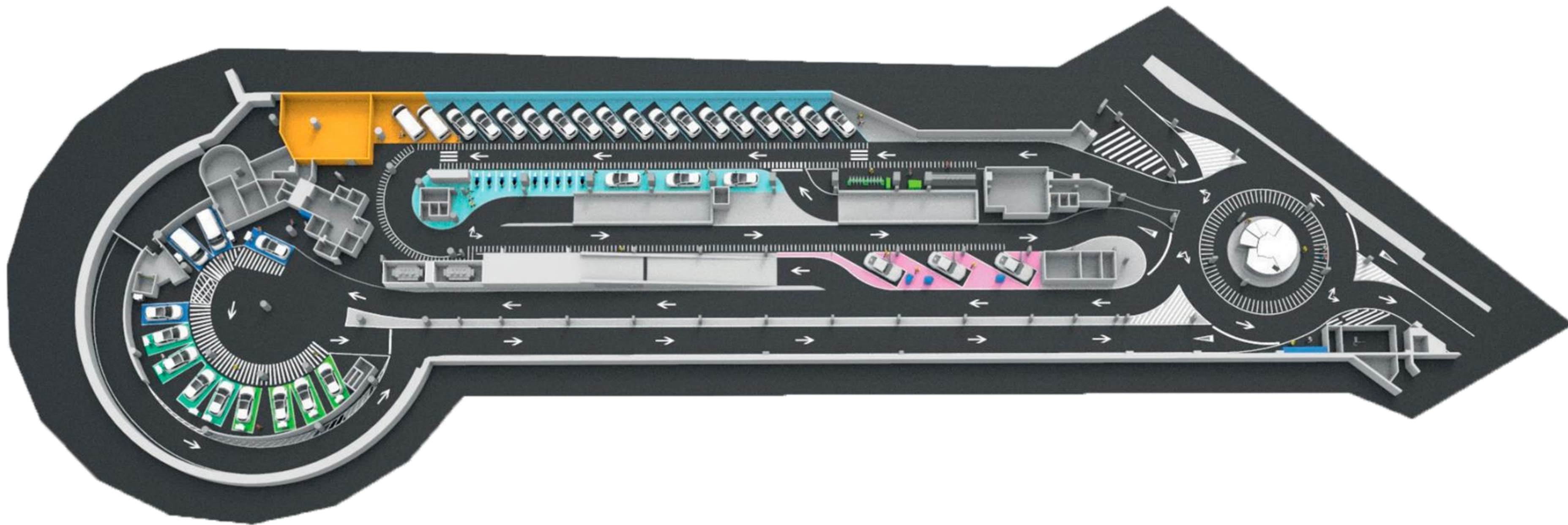
CANALEJAS  
Hub de movilidad



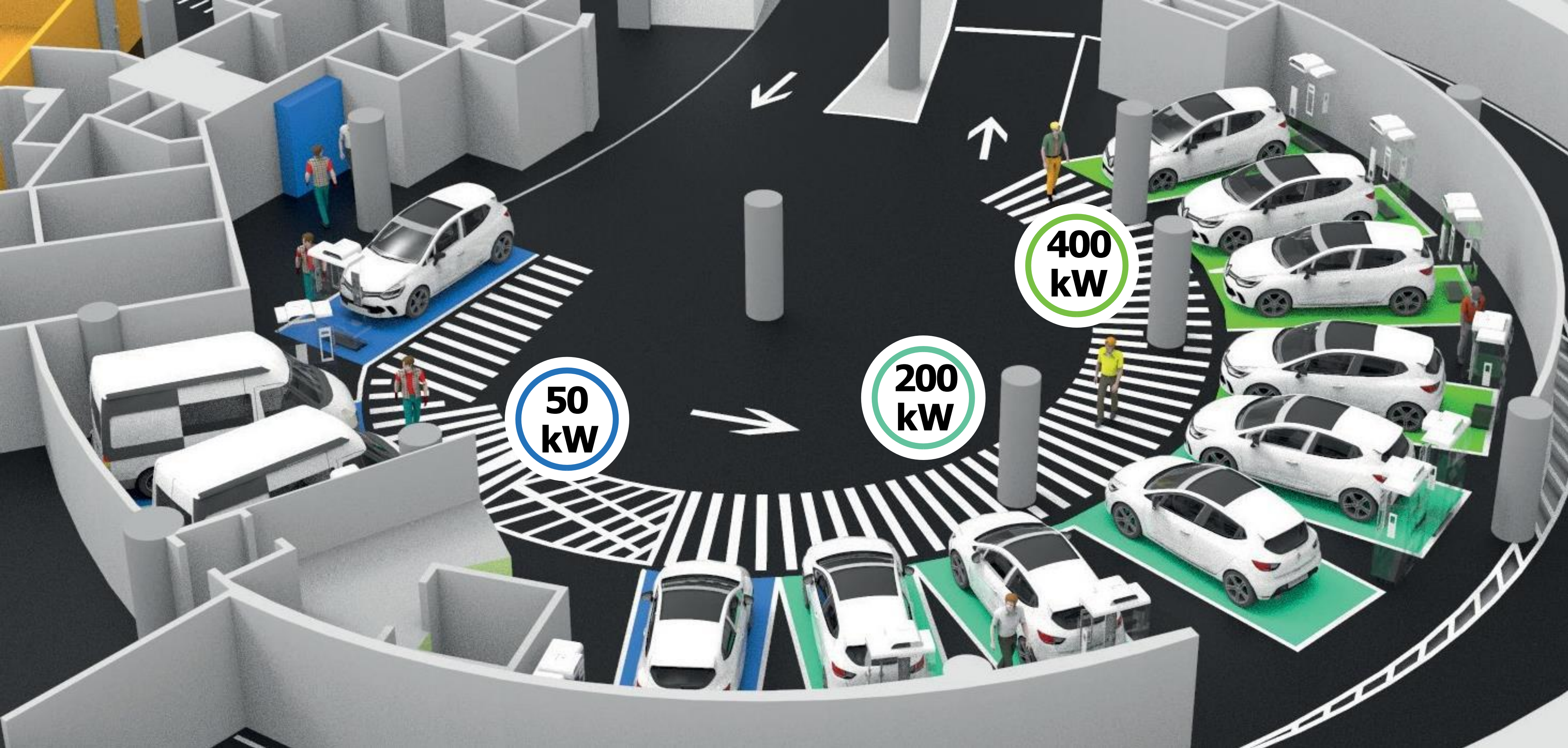
EMT MADRID



# EMPRESA MUNICIPAL DE TRANSPORTES DE MADRID

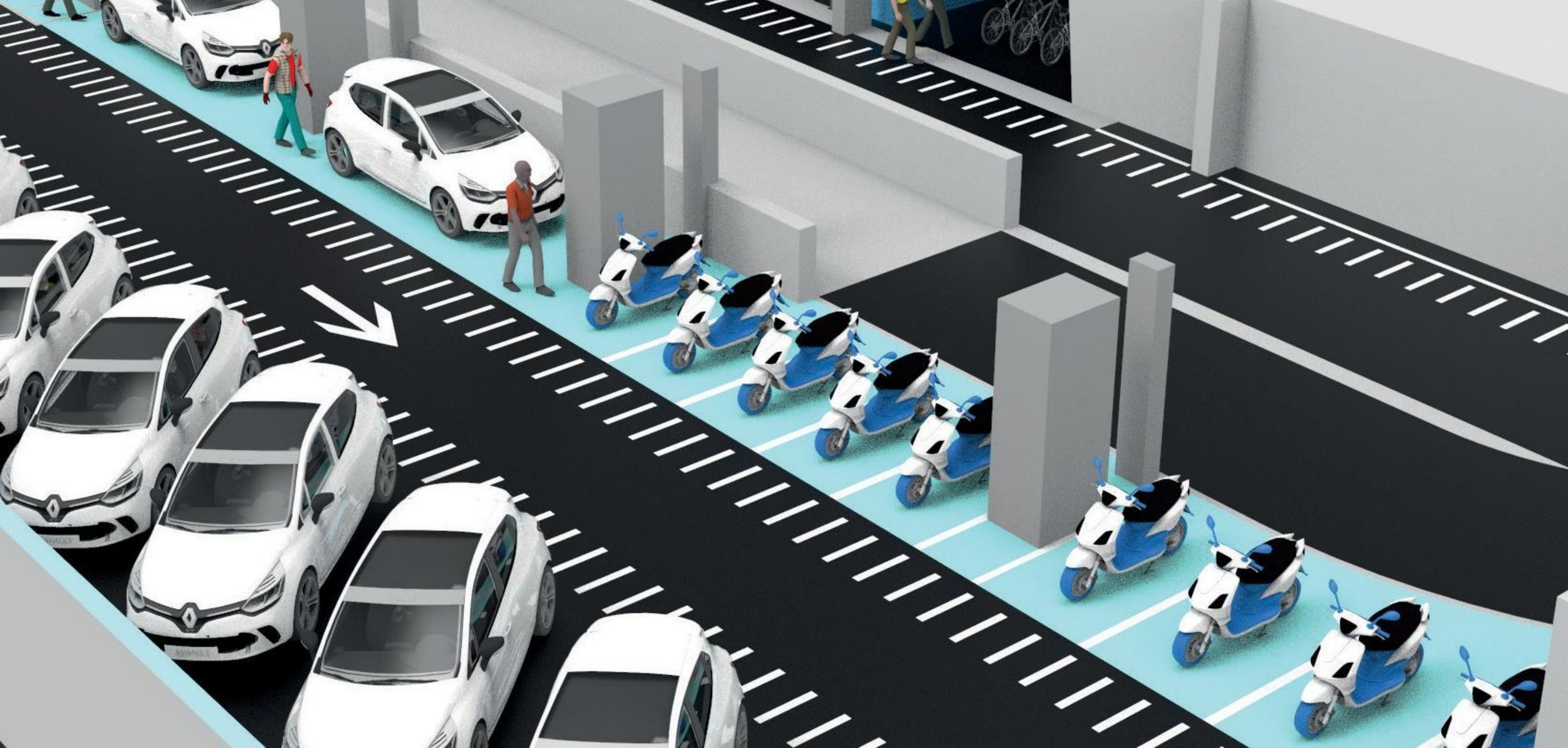






# EV CHARGING STATION





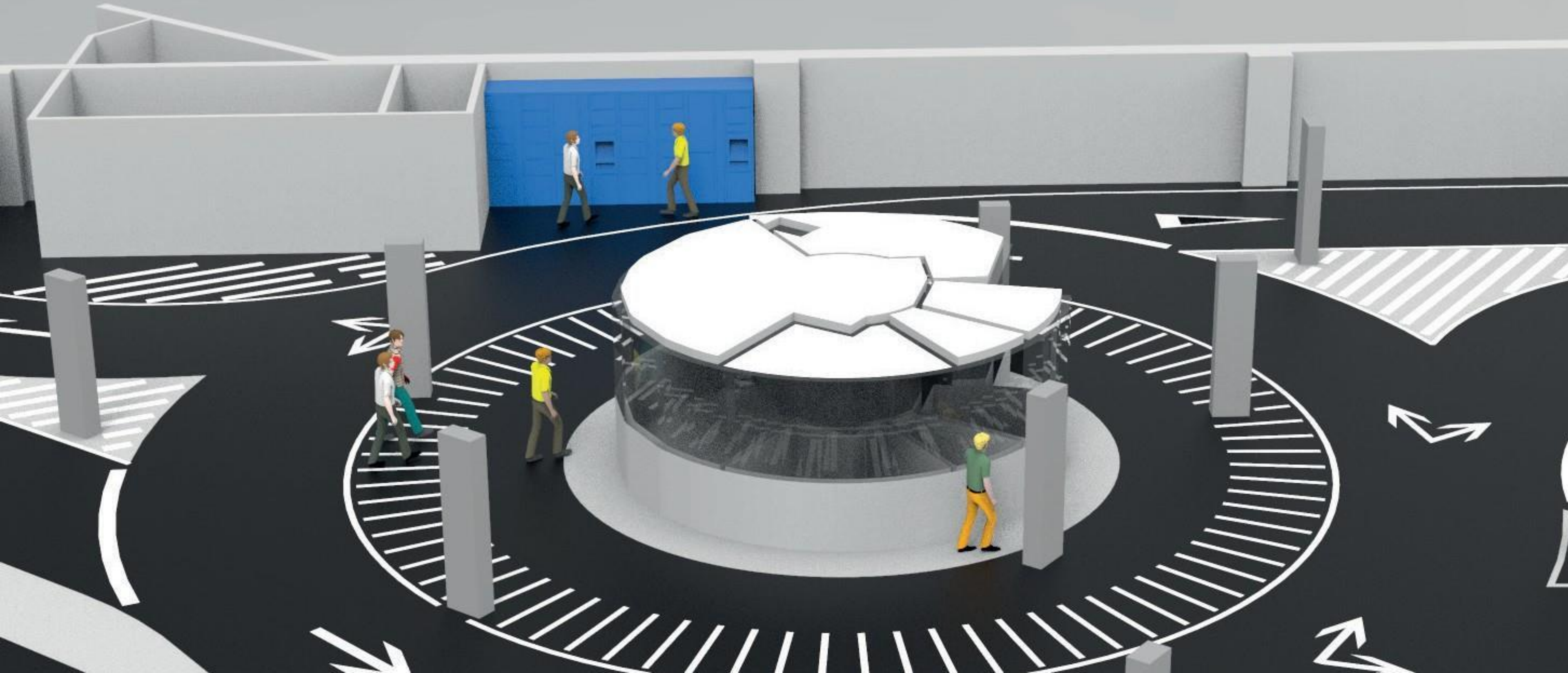
## SHARING AREA





# URBAN CONSOLIDATION CENTER





# LOCKERS



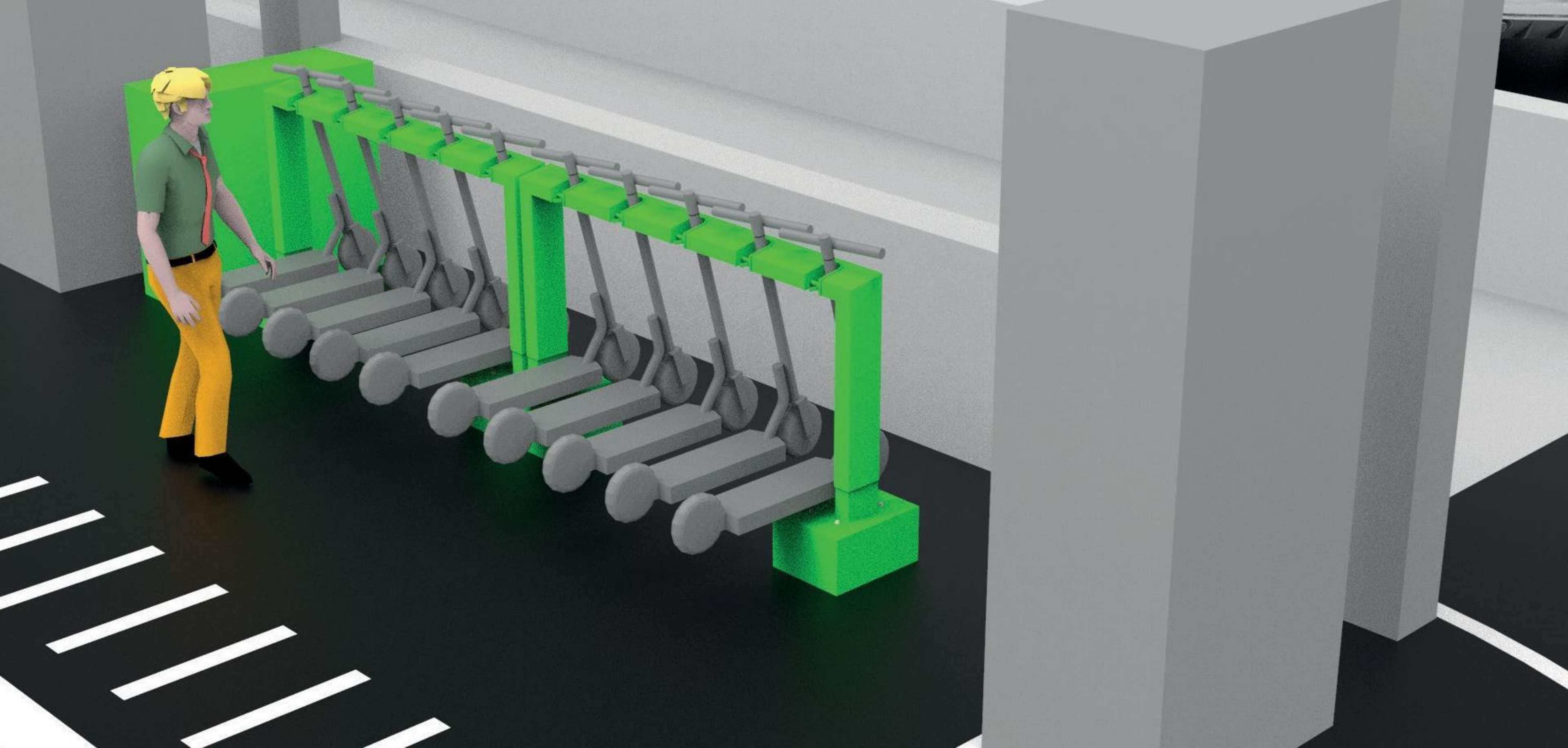


[www.polisnetwork.eu](http://www.polisnetwork.eu) #POLIS2022

## BiciPARK – SAFE BIKE PARKING





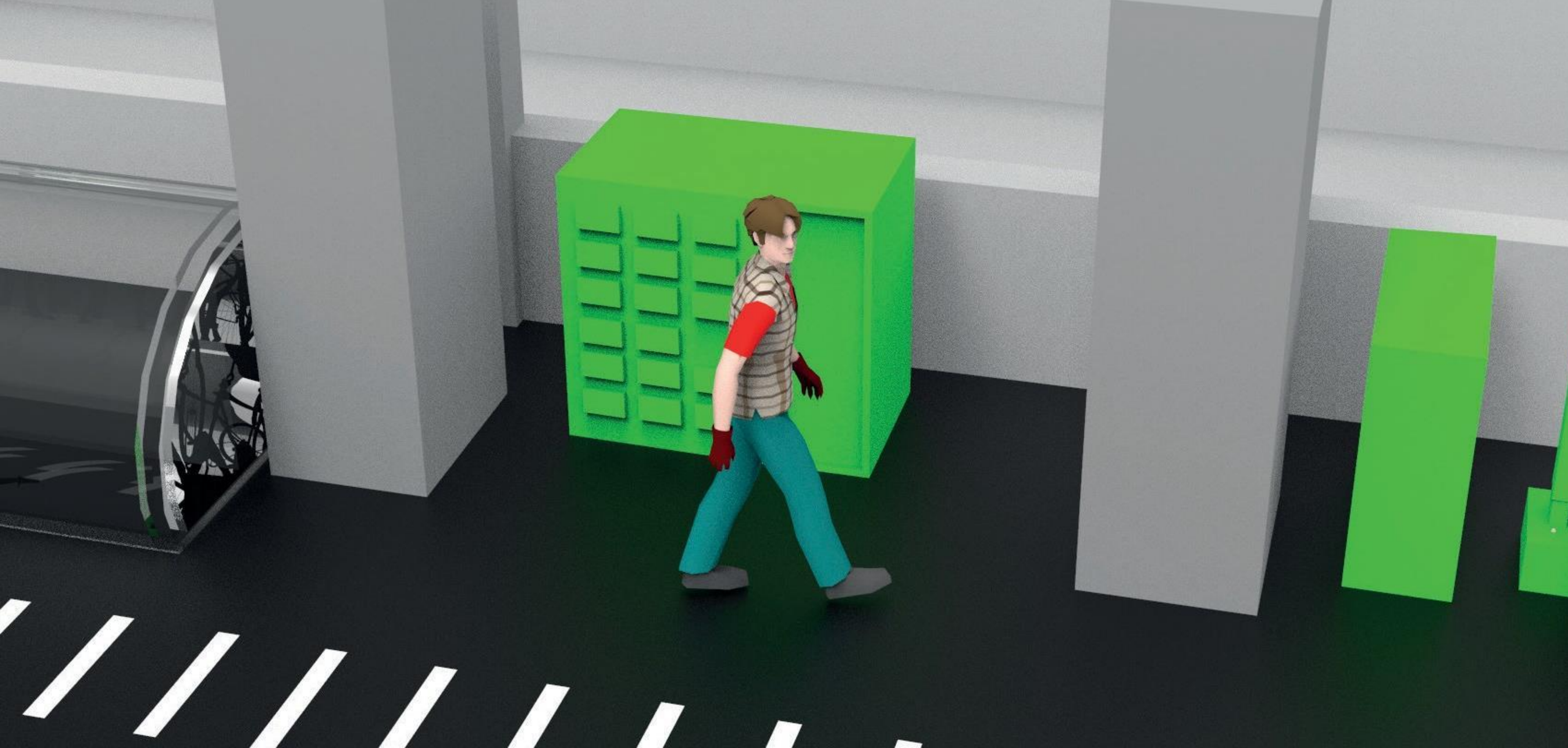


[www.polisnetwork.eu](http://www.polisnetwork.eu) #POLIS2022

## SAFE SCOOTER PARKING





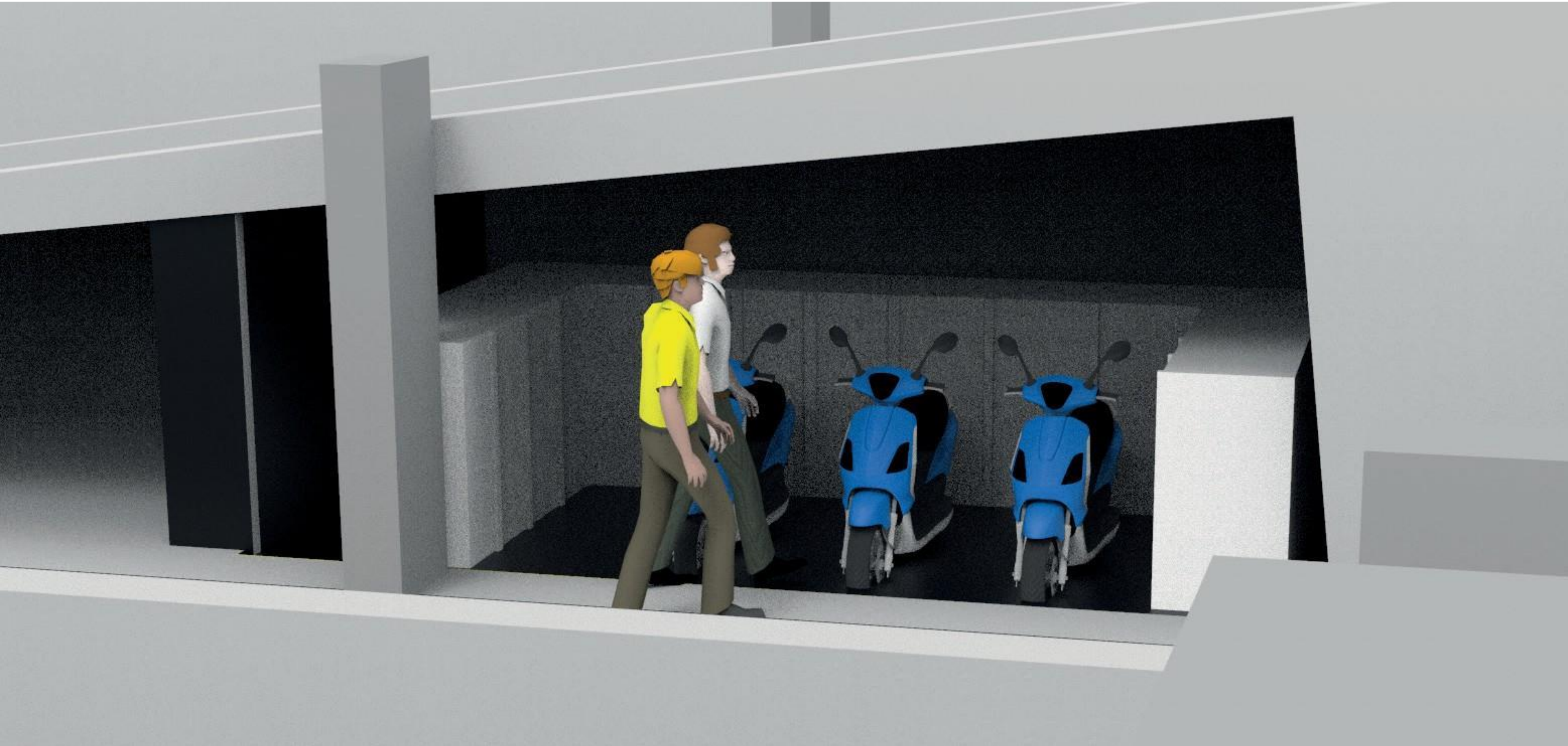


[www.polisnetwork.eu](http://www.polisnetwork.eu) #POLIS2022

## BATTERY SWAP FOR FLEETS







[www.polisnetwork.eu](http://www.polisnetwork.eu) #POLIS2022

## CLIENT-OWNED E-SCOOTER, MOPED OR MICROCAR BATTERY SWAP







**WITH AN  
AVANT-GARDE DESIGN**







NOW IT'S  
REAL

EMPRESA MUNICIPAL DE TRANSPORTES DE MADRID









# Thank you for your attention!

For questions:

SCAN ME



**Carlos Mateo Martín**

Mobility Director

<https://www.linkedin.com/in/cmateomartin/>

