

POLIS

CITIES AND REGIONS FOR TRANSPORT INNOVATION

ANNUAL
CONFERENCE

2022

30 November
1 December, 2022
Brussels, Belgium



#POLIS2022

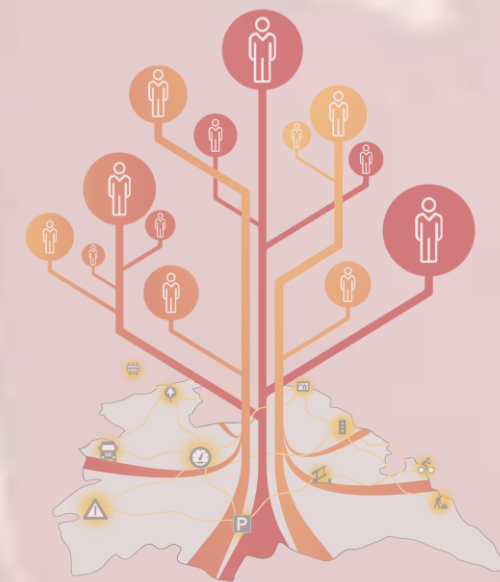
Use data, don't build new infrastructure
to meet today's and tomorrow's demand for safe and healthy journeys

Province of Utrecht



<i>Founded</i>	1375
<i>Capital</i>	Utrecht
<i>Area</i>	1.560,05 km ²
<i>Population</i>	1.354.834
<i>Density</i>	912 inh/km ²

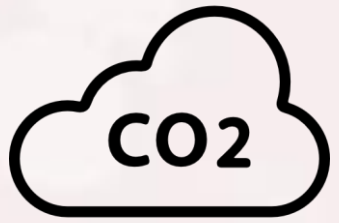
Road authority regional roads
Public transport authority
Road safety authority
National/ EU advocacy/promotion
Investments, subsidies, programs



Preparing for tomorrow



Demand for housing +83.500 until 2030



CO2/N regulations delay new developments



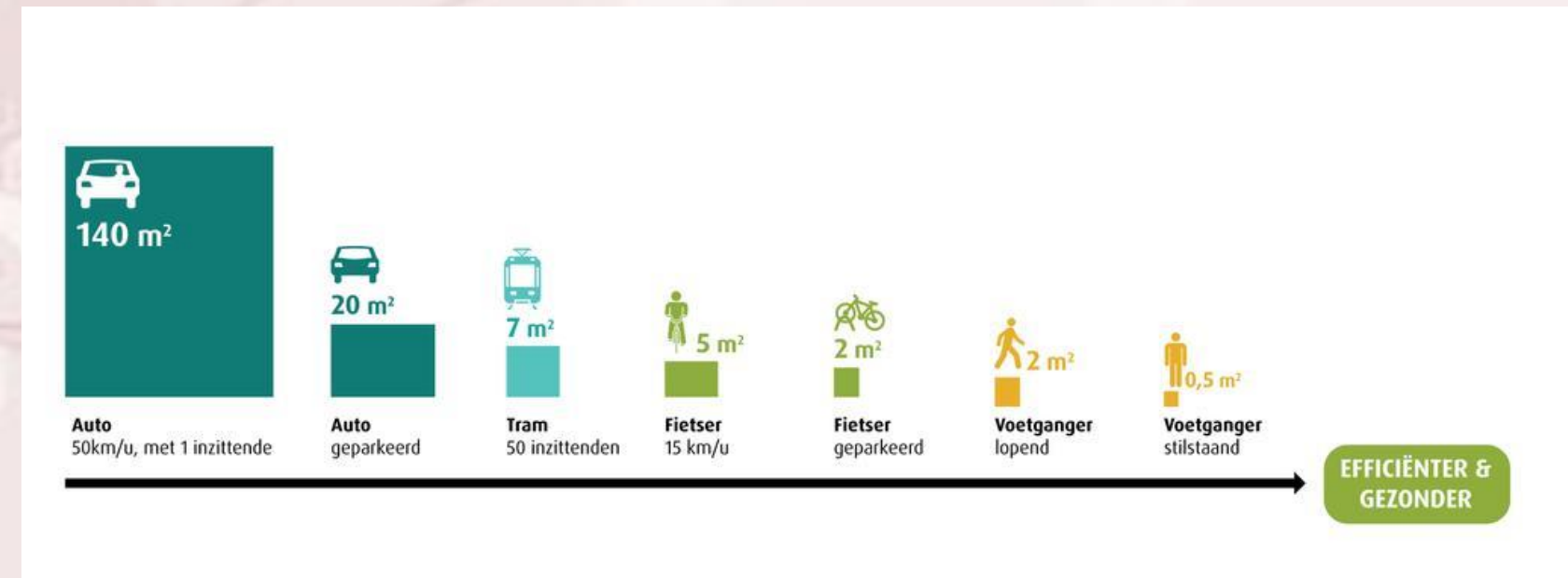
Ground use and mobility needs out of alignment



Too much work for too few colleagues



Public budget cuts



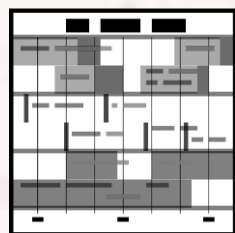
ITS directive 2010-40-EU



Data publicly accessible



real time



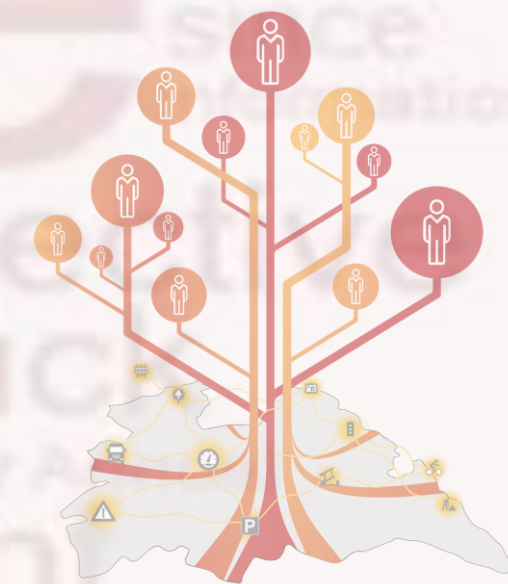
machine-readable



obliged to be used



phased in between 2023 and 2027



Three steps for combined succes



1

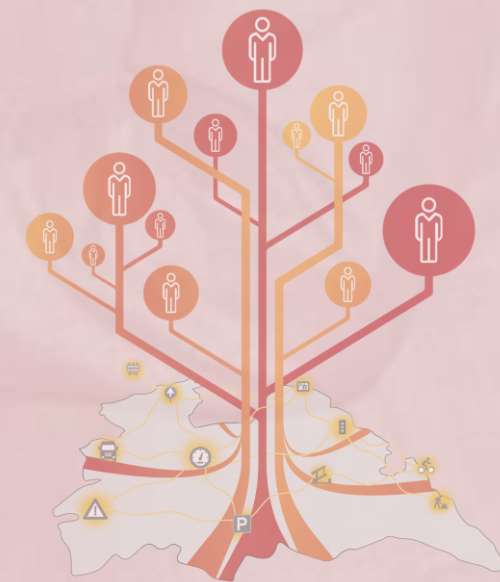
Group up

2

Find and combine

3

Unlock value



@ What's in it for them



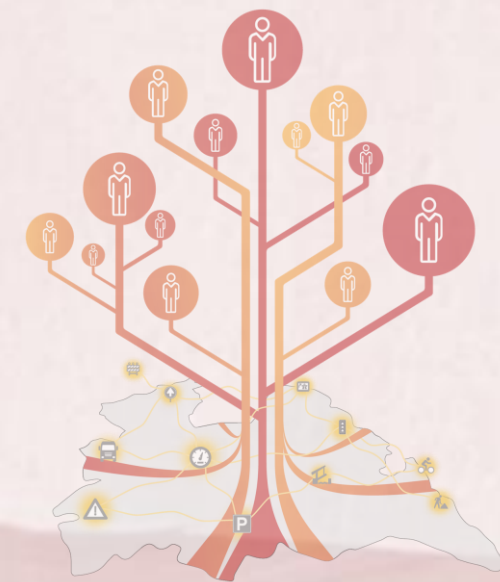
Team up with (regional) colleagues



Search and find those with questions that can be solved with information from data



Set up a business case with them (shared ownership), means data is secure for future

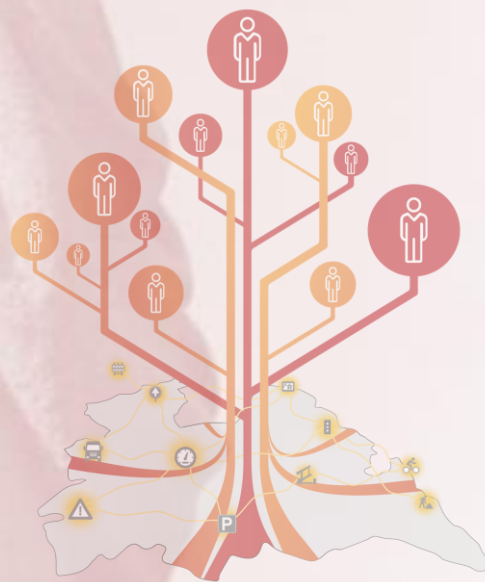


Unlocking potential



1. Find the right algorithmic to transform data into information
2. Make information very easily accessible for the users
3. Find other people with challenges that can be solved using the same information

TIP: start a algorithms community



From theory to practice



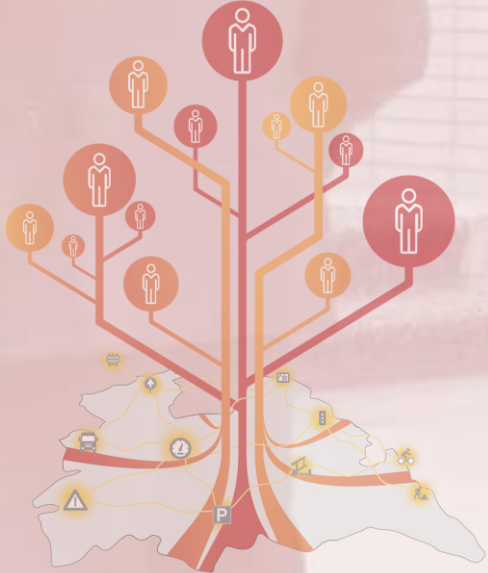
Challenge: *To build housing you need money, when building, you need to protect nature (CO2), after building citizens want to live in a healthy environment (clean urban traffic)*

Solution: *create extra funding by lowering asset management cost
Reduce traffic with high pollution, by enhancing other mobility
support faster journeys for clean mobility*



You therefor need:

*Reliable, actual, accurate and machine readable data that's available for everyone
Data such as sign's, maximum speed, road design etc..*



Data in order to meet ITS directives



Predict tarmac replacement

is a enormous benefit for road authorities, helpful for road users and the ITS directives

Scraping of the fog from data

Existing: Traffic data

Existing: budget data

Existing road inspection data

Existing public open weather data

The result

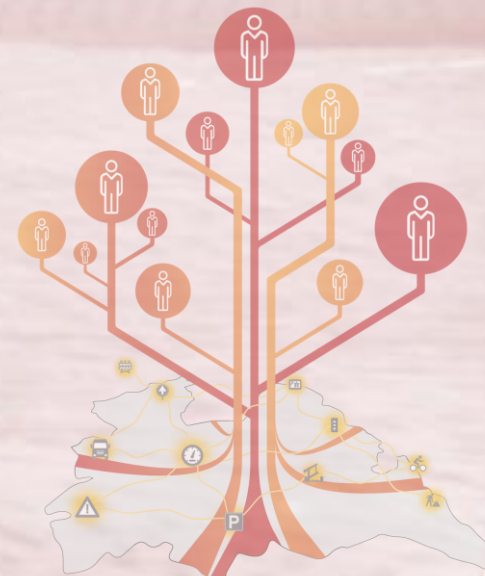
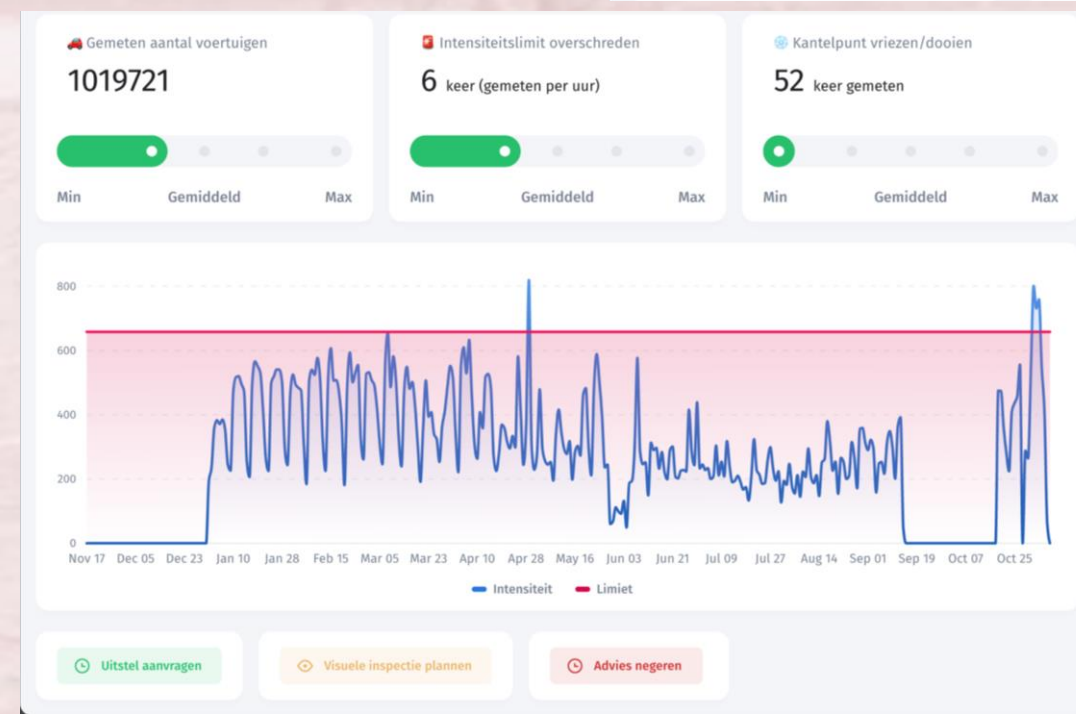
Datagedreven onderbouwing

Gepland onderhoud op N414 lijkt onnodig te zijn

- Het intensiteitslimiet is niet vaak overschreden
- Er hebben minder voertuigen gereden dan gemiddeld
- Vanwege de zachte winter is het nauwelijks voorgekomen dat de temperatuur rond het vriespunt

NIET DRUK OP DE WEG
Zachte winter

RAPPORTCIJFER WEG
★★★★★



POLIS

CITIES AND REGIONS FOR TRANSPORT INNOVATION

ANNUAL
CONFERENCE
2022

Use data, don't build new infrastructure

to meet today's and tomorrow's demand for safe and healthy journeys
4F. UNLOCKING THE VALUE OF DATA

30 November
1 December, 2022
Brussels, Belgium



#POLIS2022

Thank you for your attention.

Waldo Kolk

MY AIM: together with our municipalities standardize and uplift the quality of 15 mobility data items to improve safety, better use of existing infrastructure keeping our province a nice place to life.

MY PASSION: bringing people together
Transforming data into valuable information

<https://www.linkedin.com/in/waldo-kolk-8b001424/>



Eric van Dijk

My goal is to analyse and improve the quality of life in general and of traffic and traffic information in particular. I work mainly on policy evaluation, issue identification and policy analysis.

<https://www.linkedin.com/in/edijk/>



Provincie Utrecht / Domein Mobiliteit
Archimedeslaan 6 | p.o. box 80300 | NL 3508 TH | Utrecht
<https://www.provincie-utrecht.nl/onderwerpen/mobiliteit/smart-mobility>