



urbanradar.io



FlexCurb: smarter curbside management

December 1st, 2022

Philippe Rapin, CEO

Sandra Rothbard, Freight Matters

POLIS
CITIES AND REGIONS FOR TRANSPORT INNOVATION

 eit Urban Mobility

 Co-funded by the European Union

”

Cities curbs are an increasingly valuable and contested resource for urban freight, cars, bikes, and others.

Now more than ever, cities need to take an evidence based approach to allocate the curb for all its users.

1. Digital inventory of curb assets and regulations for curb planning
2. Reveal curb use patterns to inform public space interventions
3. Mobile app for freight drivers to access loading zones

Goals of 4 pilot projects

- Prioritize changes to loading zones and other curb uses
- Improve analysis of parking sensor data in light of local regulations
- Communicate temporary loading zone closures and regulations directly to their users (drivers)



Before, our curb data was fragmented and we could never really understand how well we were doing. With FlexCurb, I can see clearly the actions we need to take to advance our sustainability plans, with data to convince our politicians

**Mobility Projects Coordinator,
City of Leuven**



FlexCurb is built to address cities needs



leuven

Pop: 100k

Identify and evaluate changes to parking regulations and loading zones



Pop: 105k

Share loading zones occupation with freight drivers



Pop: 480k

Understand activity and improve regulations in Low-emissions zone



Pop: 1M

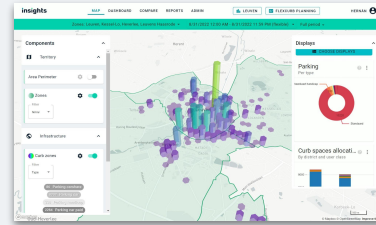
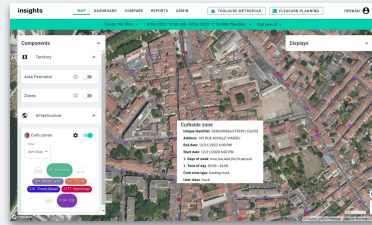
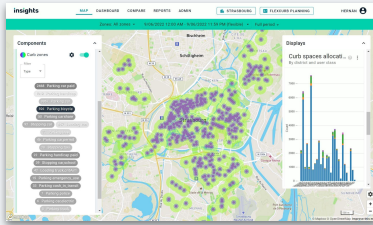
Share curbside closures with logisticians





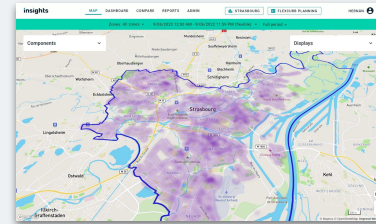
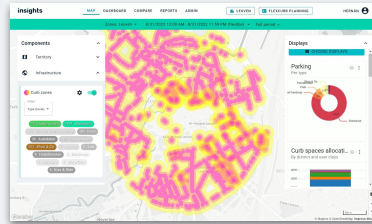
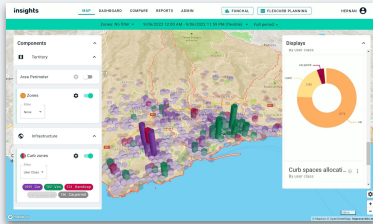
Answer complex curb-related questions in minutes

Loading Zone planning



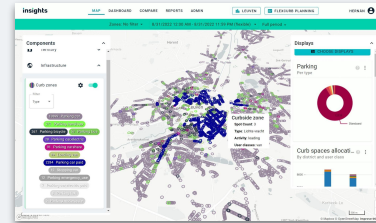
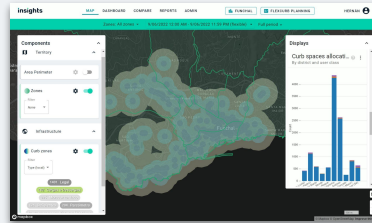
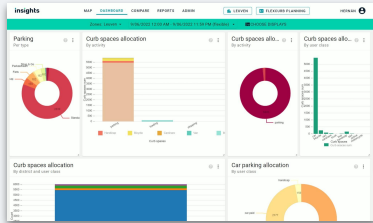
Activity patterns

Regulations evaluation

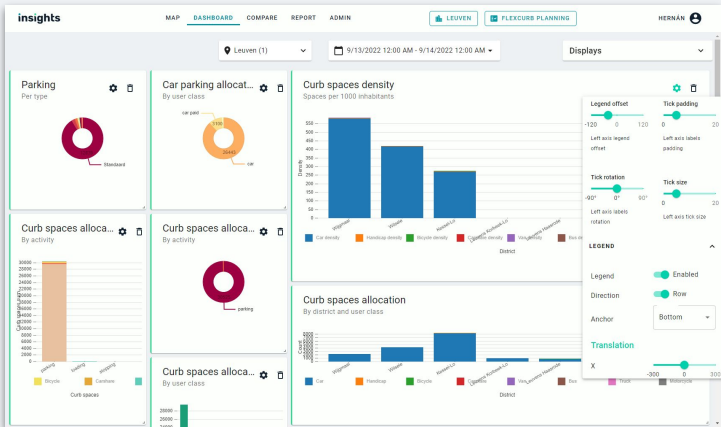


Allocation imbalance

Curb use imbalance



Underused zones



Daily insights for curb managers

Ready to use curbside inventory for city managers



Quickly answer daily questions about how the curb is allocated and used without the need of mapping or data specialists

Improve mobility and logistics efficiency through better curb access



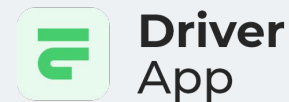
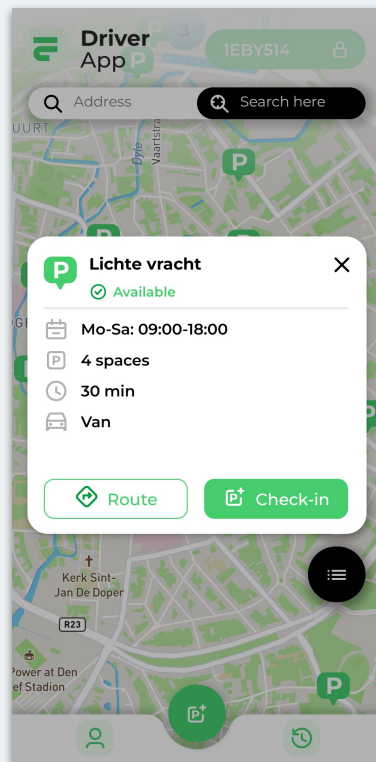
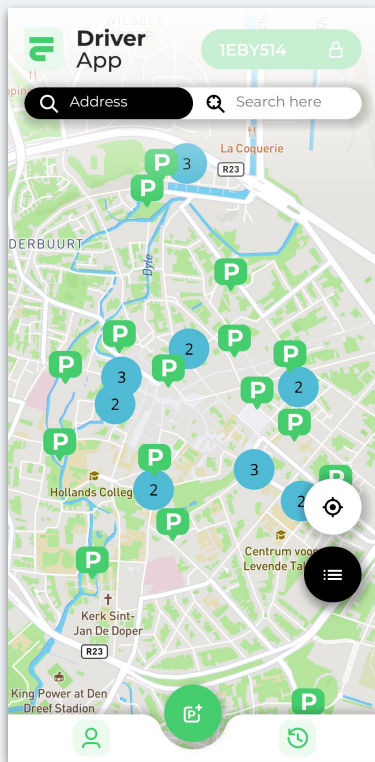
Minimize frictions between competing curb uses. Prioritize curb access to incentivize sustainable mobility and logistics

Digitize and communicate the curb inventory



Communicate with citizens and businesses using an interoperable data format of the curb and clear performance metrics

FlexCurb Driver App©: seamless access to the curb



Efficient curb access for freight parking

Locate best loading zones for freight

- ✓ Assist navigation and access to the closest and most convenient loading zones

Minimize logistics inefficiencies and curb conflicts

- ✓ Prevent congestion and freight delays by reducing illegal and double parking events

Seamless communication and compliance of curb regulations with logisticians

- ✓ Empower drivers to comply with complex curb and loading zones regulations



Before having FlexCurb, we could not take full advantage of some data we had because we lacked functionalities to use them. In particular, data on curb occupation were not fully exploited

Jean Melounou,
Eurométropole de Strasbourg



Informing decision-making at the curb

- “ Flexible curb regulations for cars, bikes, and deliveries now seem doable
- “ FlexCurb supported our policy goals by helping rethink curb use
- “ We could more easily decide where to position new loading zones and bike racks



Improving urban logistics

- “ It's a promising way to reconcile last mile logistics and improve quality of life in the city

Augmenting collaborations

- “ Thanks to FlexCurb, we improved city collaborations with the logistics industry
- “ It has the potential to improve our workflows with external consultants



Philippe Rapin
CEO, Urban Radar

 philippe@urbanradar.io

 @RapinPhilippe

 philipperapin1/



Sandra Rothbard
Principal, Freight Matters

sandra@freightmatters.org

@freight_matters

sandrarothebard/



Spatial analytics for
smart cities

FlexCurb
Smarter Curbside Management