

POLIS

CITIES AND REGIONS FOR TRANSPORT INNOVATION

ANNUAL
CONFERENCE

2022

30 November
1 December, 2022
Brussels, Belgium



#POLIS2022

Assessing the impacts of vehicle automation

Session 4B: ARE CITIES READY FOR VEHICLE AUTOMATION?

Suzanne Hoadley, Polis

Project basics

- 12/18-05/22 – H2020 – 12 partners/10 countries
- Scope: CCAM impact assessment focusing on cities
- Why?
 - High expectations about CAVs
 - Most CAV research focuses on technology and functionality
 - Knowledge gap of likely impacts of CAVs/services, particularly during transition phase
 - Major challenge to forecast impact of future systems
 - Huge array of impact areas (next slide) adds to complexity of future mobility forecasts
- Outputs
 - Impact assessment methodology
 - Case studies x 6: Vienna: road pricing, platooning on urban bridges, last mile shuttle, automated delivery/consolidation; Leicester: Automated ride sharing, GLOSA; Manchester: automated delivery
 - Policy Support Tool – interactive, intuitive tool to forecast impacts and for backcasting



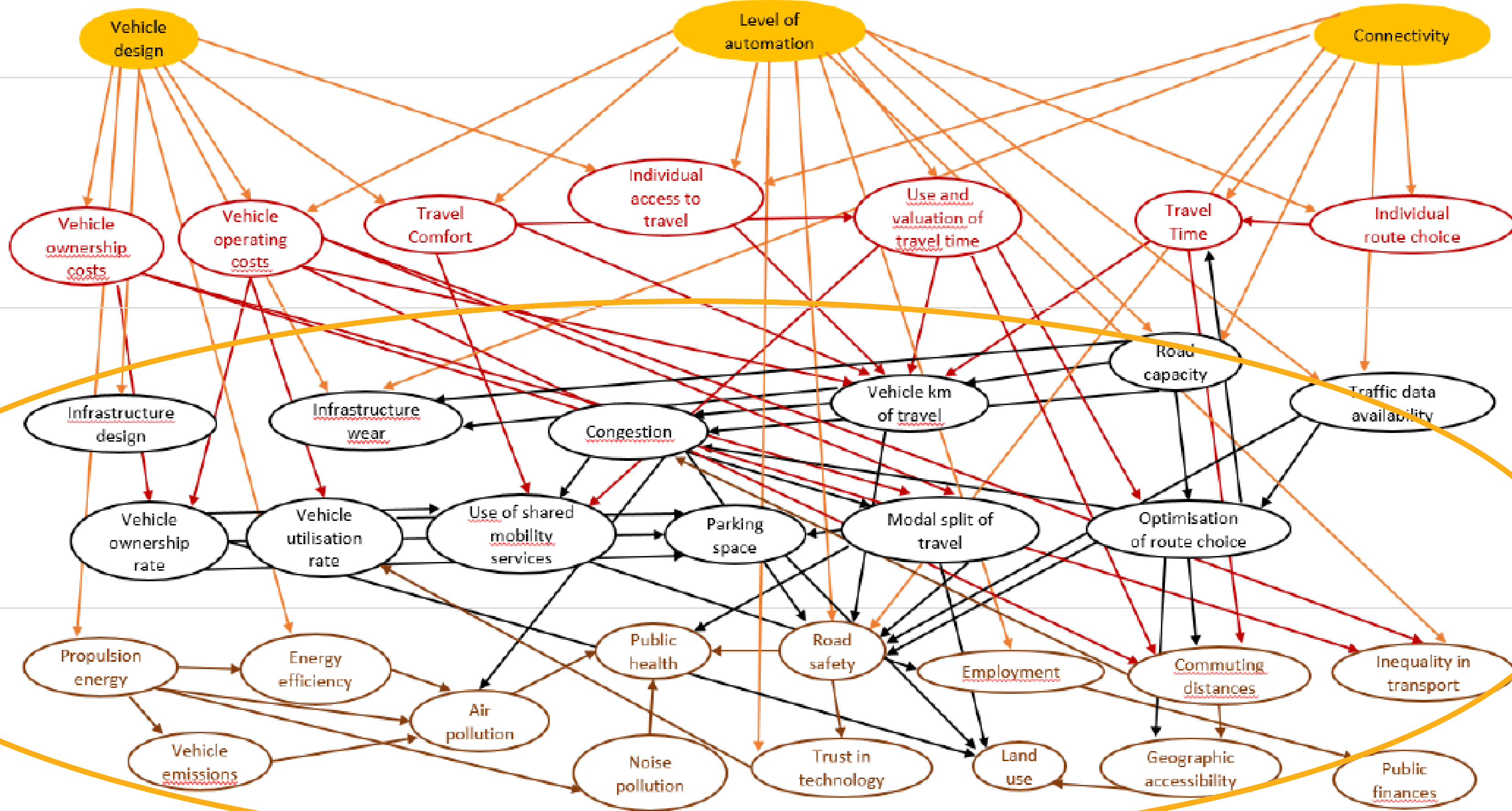
Primary impacts

Impact generators




Direct impacts

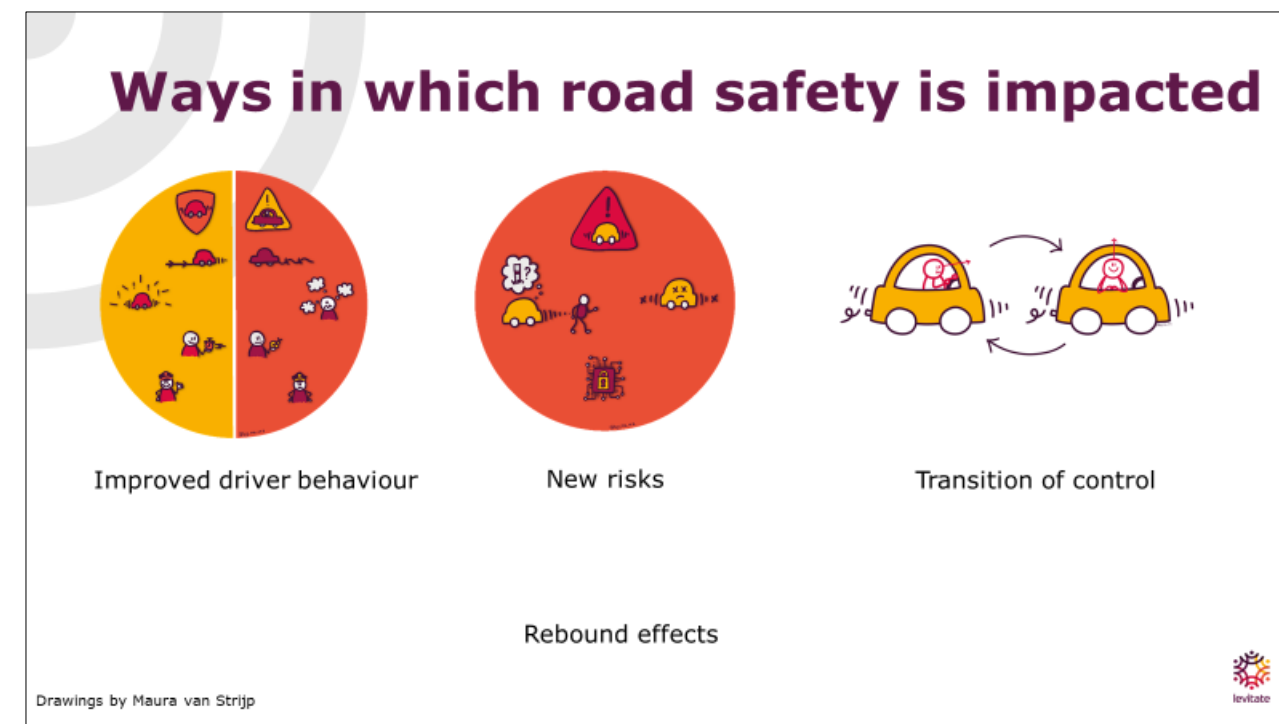
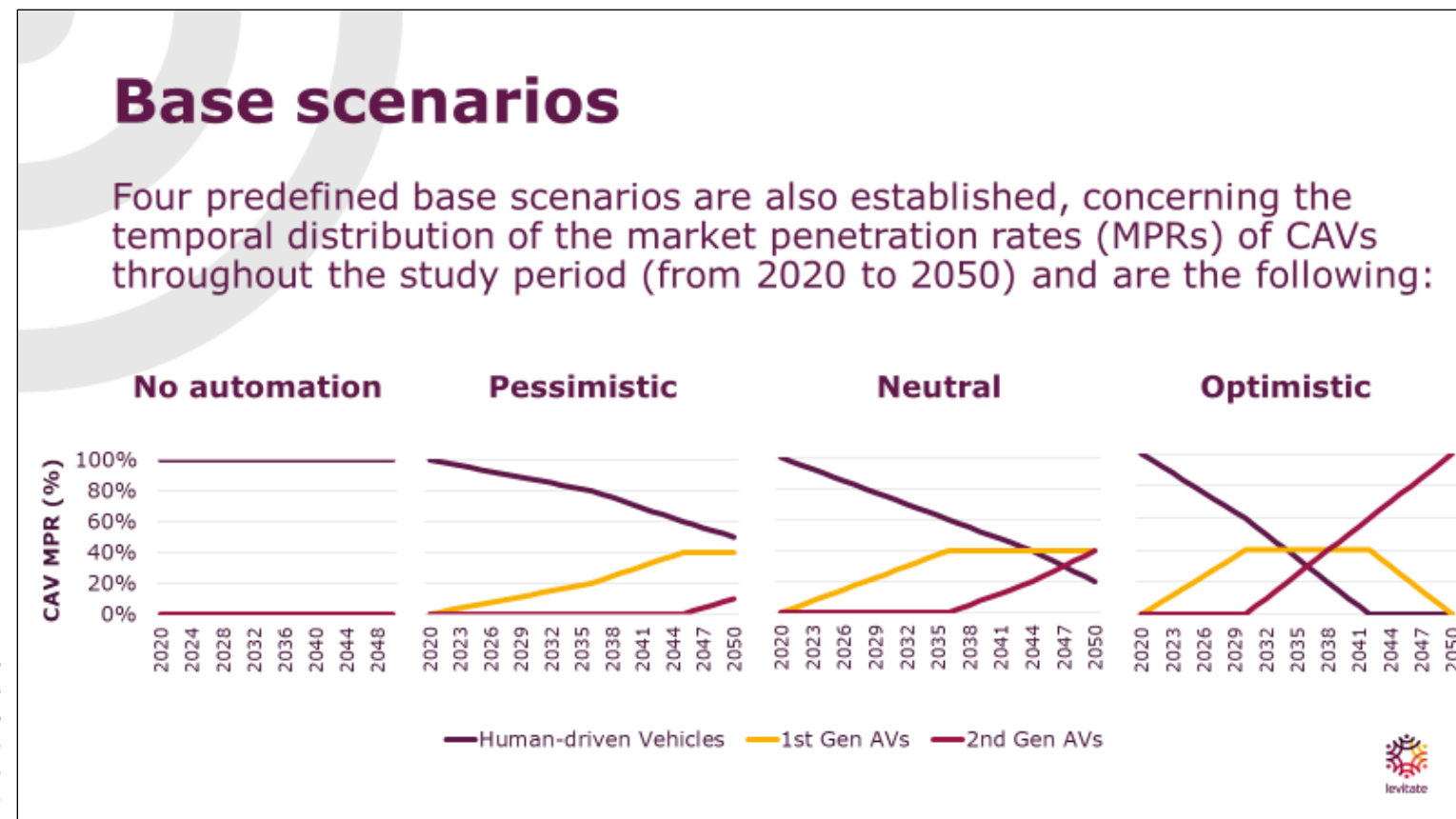
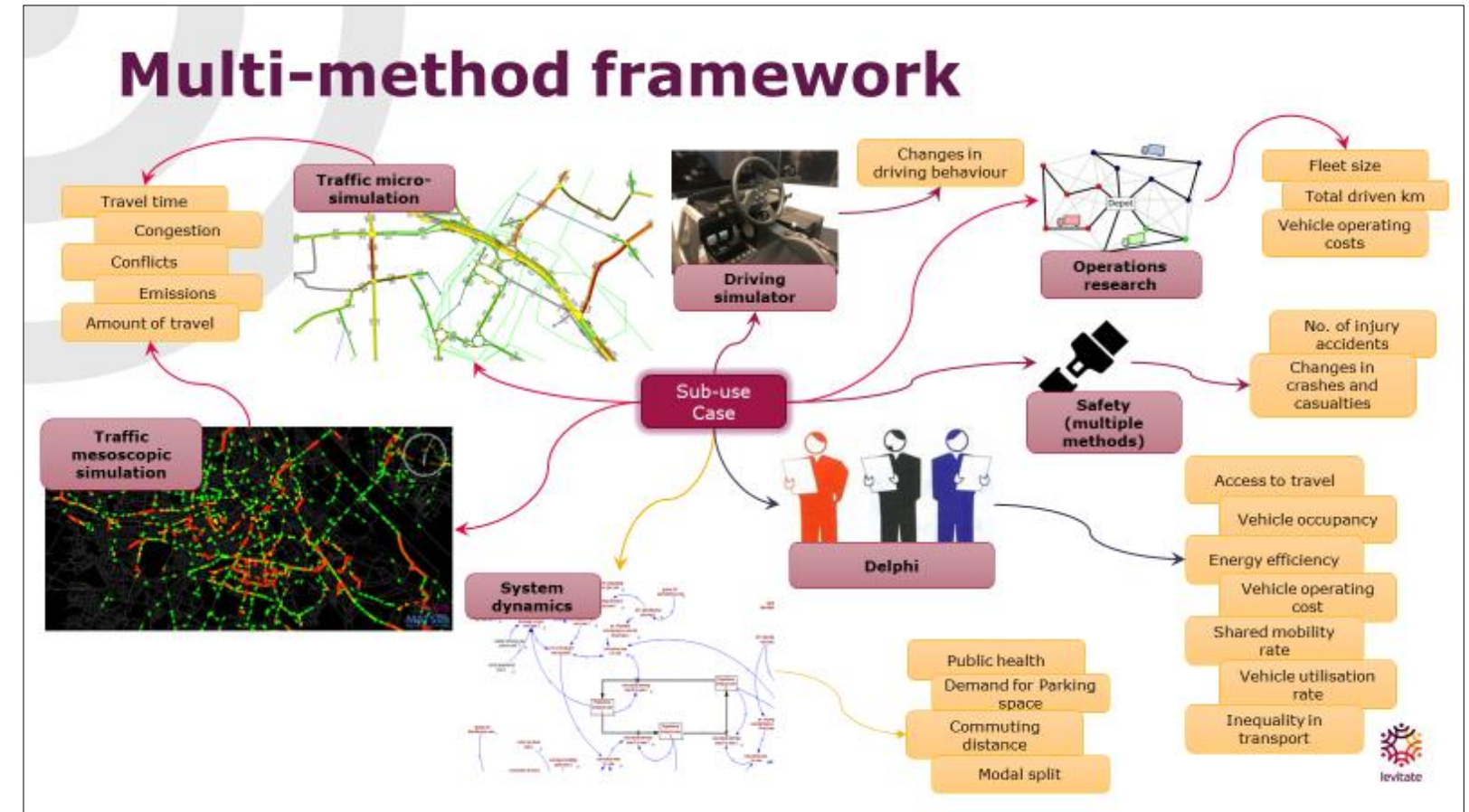
Systemic impacts

Wider impacts



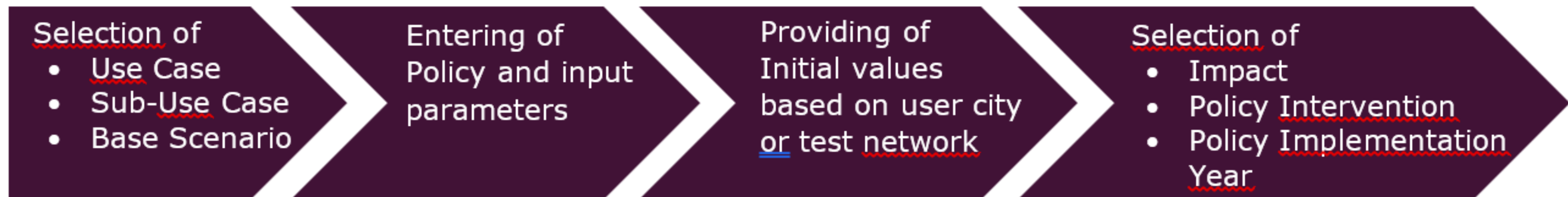
IA methodology building blocks

Use case	Sub-use cases				
Urban mobility 	Single point to point shuttle	Point to point shuttle across wide area	On demand anywhere to anywhere shuttle	On demand last mile shuttle	On demand e-hailing service
Passenger cars 	Dedicated lanes for CAVs	Road use pricing	Parking space regulations	Automated ride sharing	Green light optimal speed advisory
Freight and logistics 	Automated urban delivery	Automated freight consolidation	Hub to hub automated transport	Platooning on urban bridges	

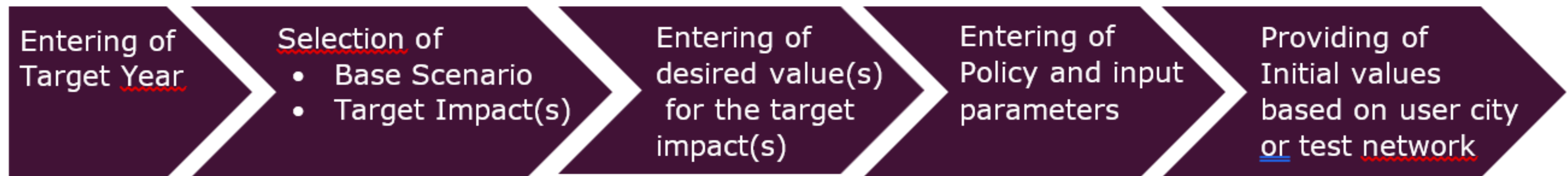


LEVITATE PST – www.ccam-impacts.eu

FORECASTING provides quantified and/or monetized output on the expected impacts of automation and CCAM related policies, featuring customizability of parameter quantities.



BACKCASTING enables users to identify the sequences of CCAM measures that are expected to result in their desired policy objectives and monetize their implementation.



Video

Thank you for your attention!

