

# POLIS

CITIES AND REGIONS FOR TRANSPORT INNOVATION

ANNUAL  
CONFERENCE

# 2022

30 November  
1 December, 2022  
Brussels, Belgium



#POLIS2022

# Improving automated shuttle services

Session 4B. ARE CITIES READY FOR VEHICLE AUTOMATION?

*Patrick Hofman*

*Senior Project Manager Smart & Green Mobility*

*City of Helmond*

Gemeente Helmond



# Agenda

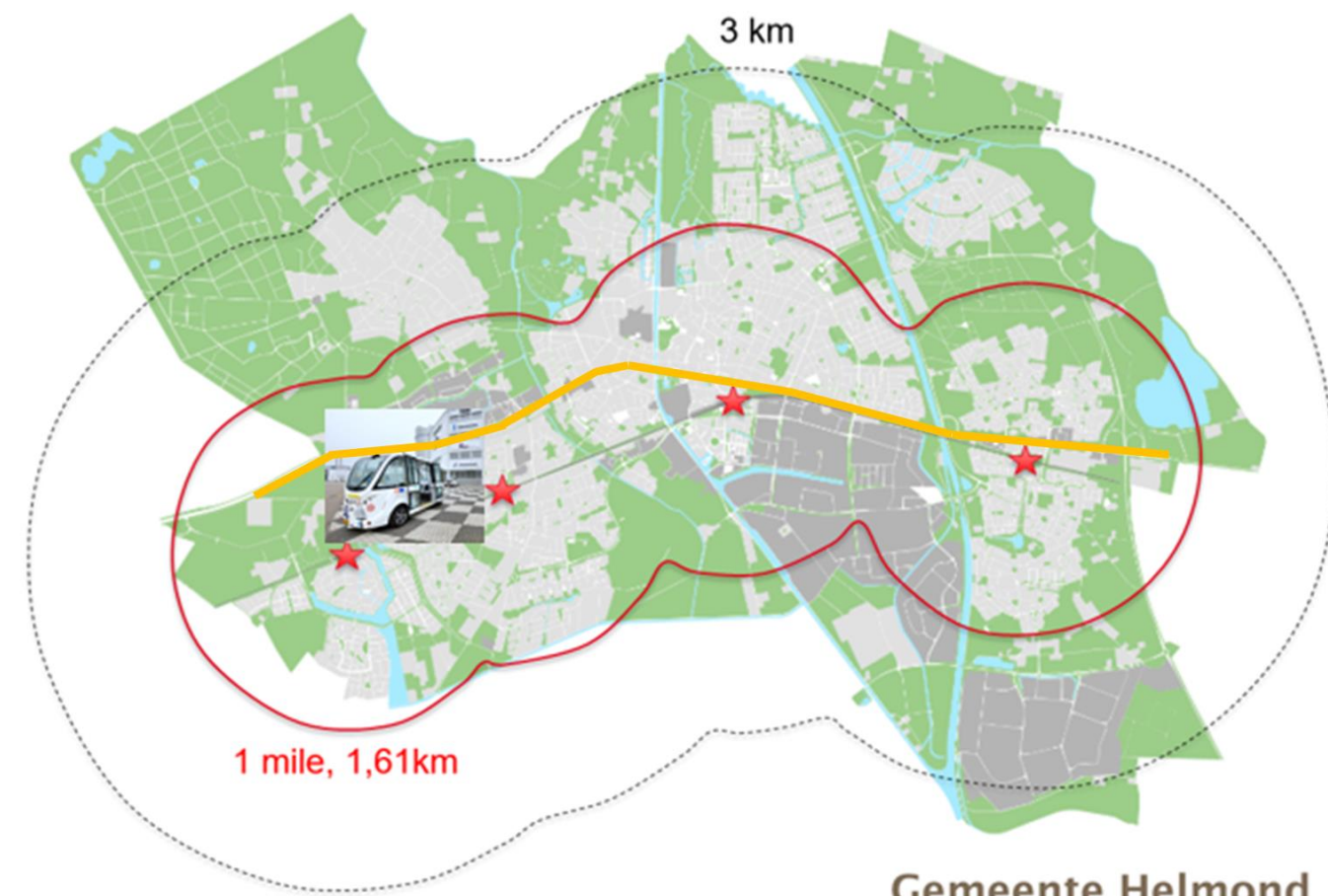
1. Introduction
2. Previous projects / learnings
3. Next steps



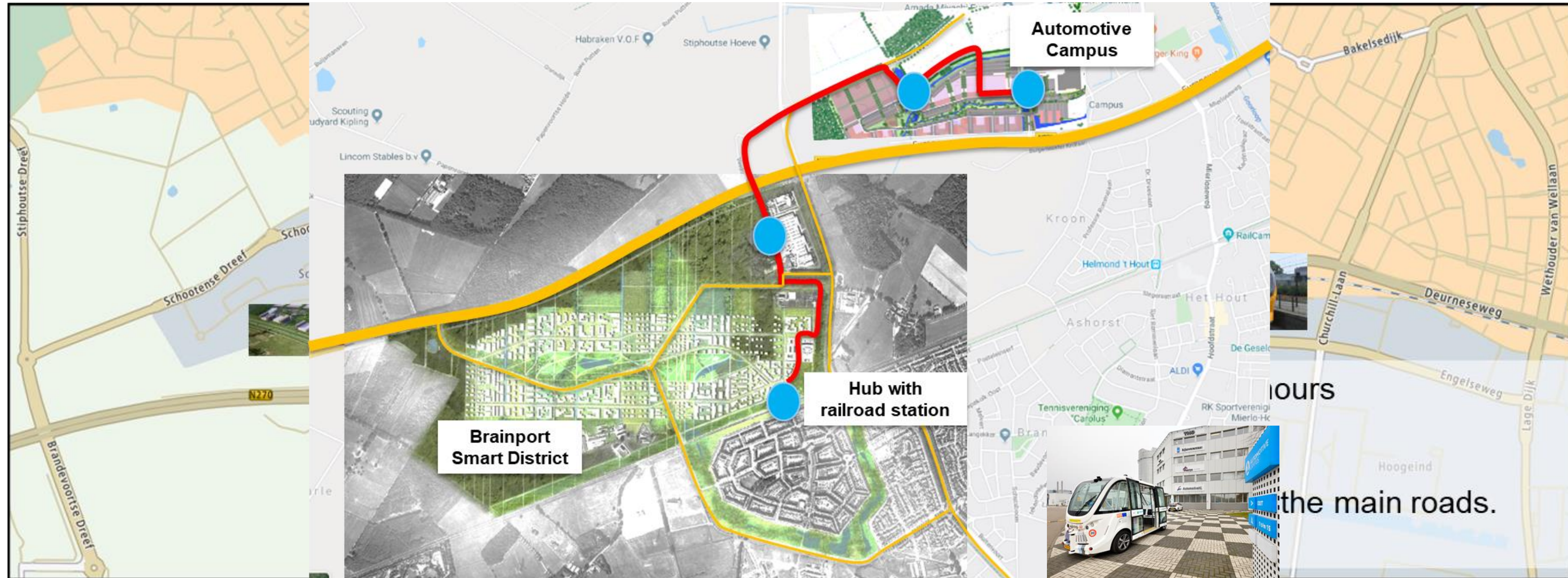
# Introduction

- Relatively short distances in the city – first/last mile service oriented
- 4 train stations, limited offer of local PT
- 1 main road, reaching its max capacity & traffic causing environmental and noise pollution

• 95.000 inhabitants  
• Urban area



# Previous projects / learnings



# Previous projects / learnings

## Lessons, benefits, impacts of FABULOS project

- FABULOS was a great success in many ways
  - Most difficult route in NL so far
  - Successful pilot and Pre Commercial Procurement process
  - Better understanding of current status technology and procedures
  - Resulted in new collaborations / initiatives in NL & Brainport area
- Using FABULOS experiences to improve procedures NL and accelerate innovation.

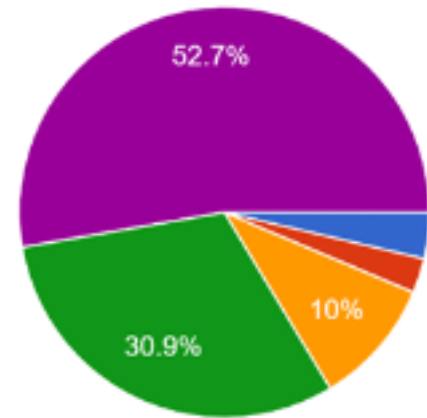


# Previous projects / learnings

# Previous projects / learnings

Hoe (on)tevreden bent u met uw rit in de zelfrijdende shuttle?

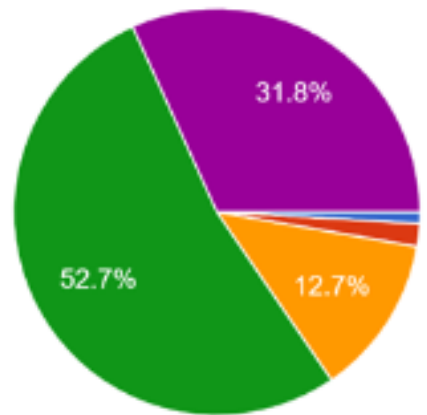
110 responses



- Erg ontevreden
- Een beetje ontevreden
- Neutraal
- Een beetje tevreden
- Erg tevreden

Hoeveel vertrouwen heeft u in de TOEKOMSTIGE techniek van de zelfrijdende shuttle?

110 responses



- Helemaal geen vertrouwen
- Een beetje vertrouwen
- Een gemiddelde hoeveelheid vertrouwen
- Veel vertrouwen
- Volledig vertrouwen



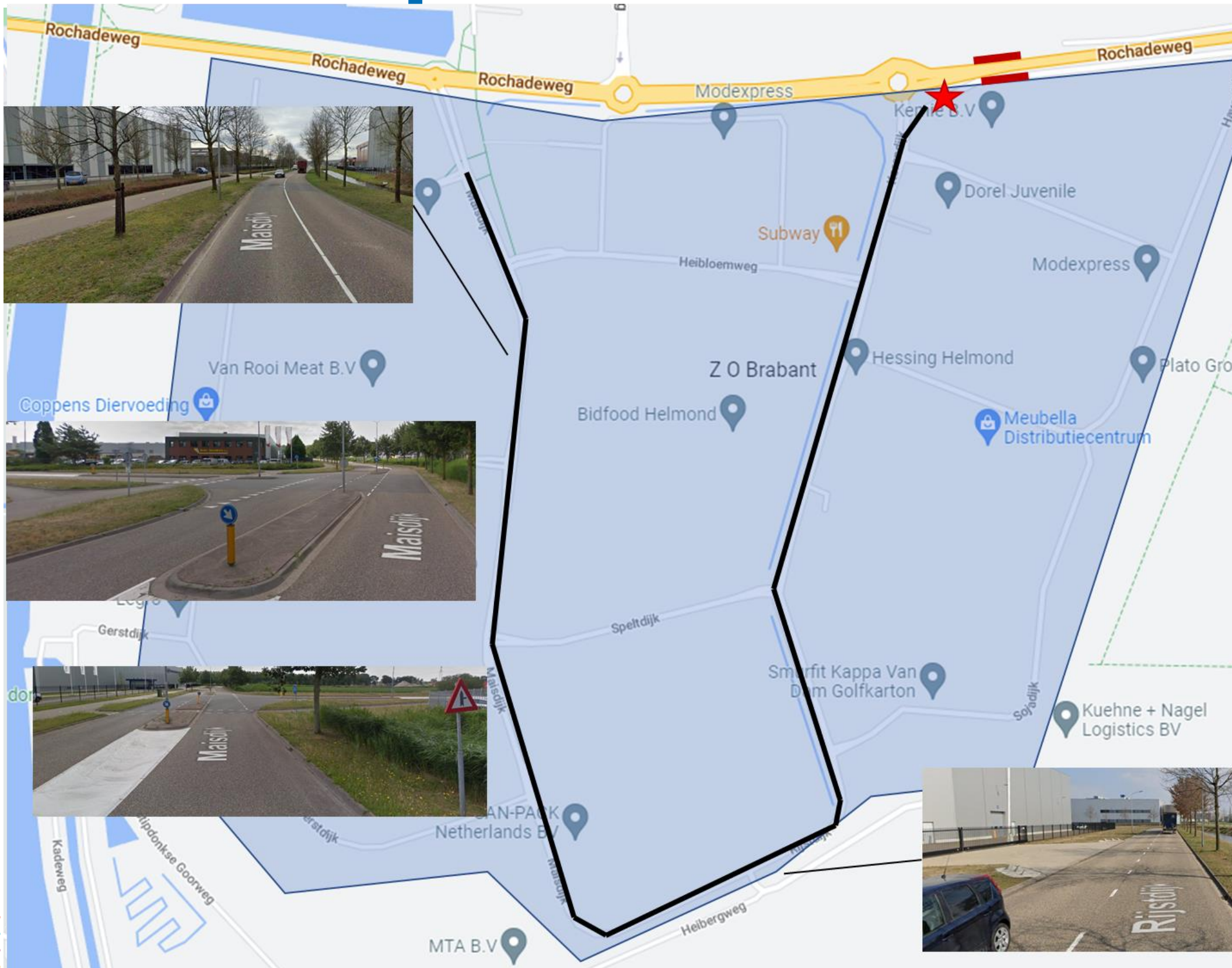
# Next steps

- National working groups for knowledge sharing  
[www.dutchmobilityinnovations.com](http://www.dutchmobilityinnovations.com) – community “Automatisch Rijden”
- Implementation General Safety Regulations & Implementing Act ADS (a.o. adaptation national laws)
- National roadmap shuttles & pods
- FABULOS AI
- FABULOS phase X program
  - Triple Helix collaboration
  - Learning by doing





# Next steps



## Last-mile transport service area

- Blue area = last-mile transport service area / speed limit = 50 km/h
  - Currently, no PT available in this area
- Black line = scope for last-mile transport service with AV / 2,6km
  - AV would run on vehicle lane
  - Priority road
  - Seperated cycle lane
  - Cycle path crossings
  - Company entrances/exits



# Thank you for your attention!

For questions:

[Patrick.hofman@helmond.nl](mailto:Patrick.hofman@helmond.nl)

