



# How NextGenEU funds are helping EMT Madrid in achieving climate neutrality

Session 2.H **“From climate ambition to climate action”** (Governance & Integration)

*Maria José Rojo Callizo, EMT Madrid*



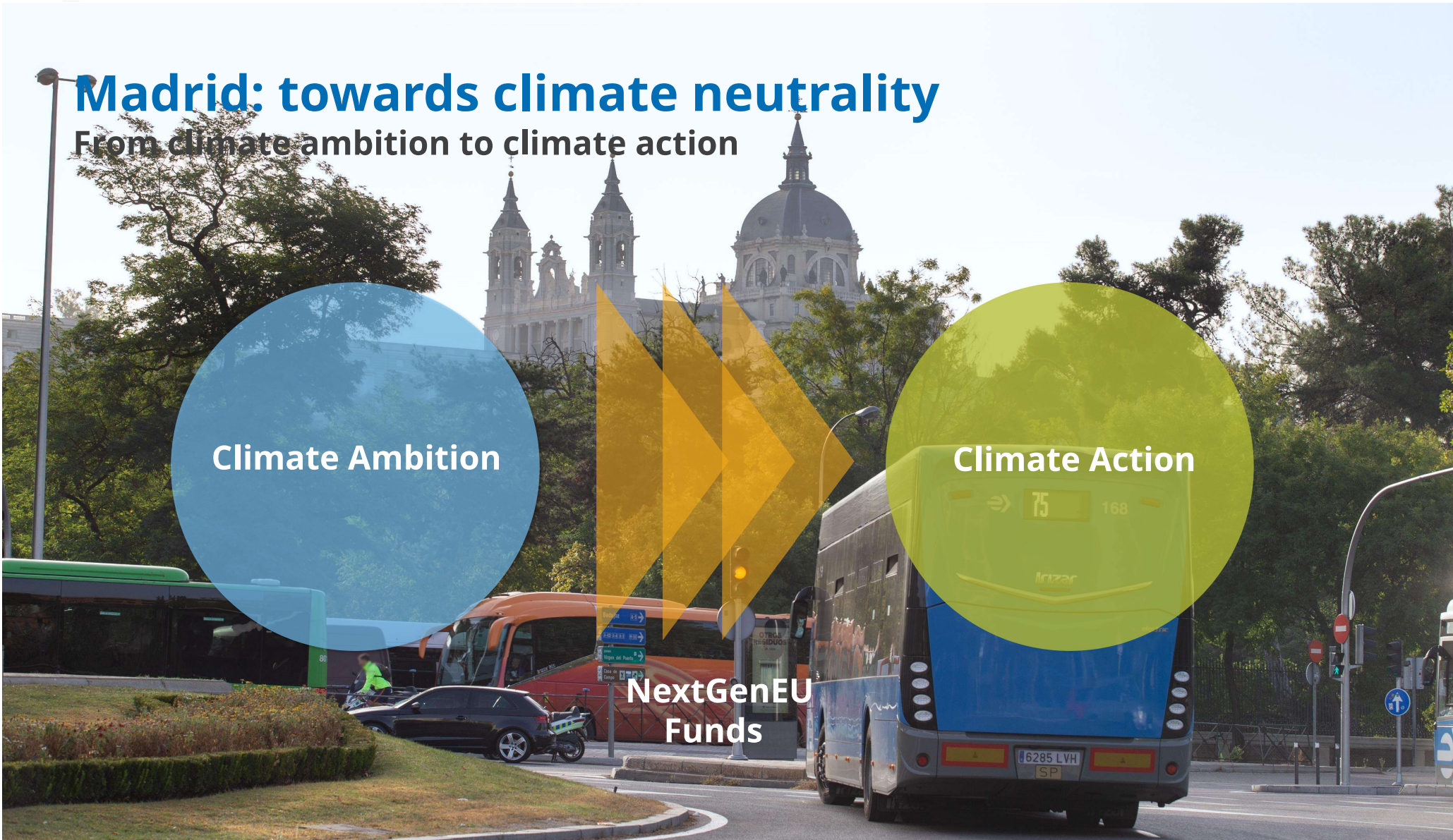
# Madrid: towards climate neutrality

From climate ambition to climate action

Climate Ambition

NextGenEU  
Funds

Climate Action



# Climate ambition



[www.polisnetwork.eu](http://www.polisnetwork.eu) #POLIS2022



Funded by  
the European Union  
NextGenerationEU

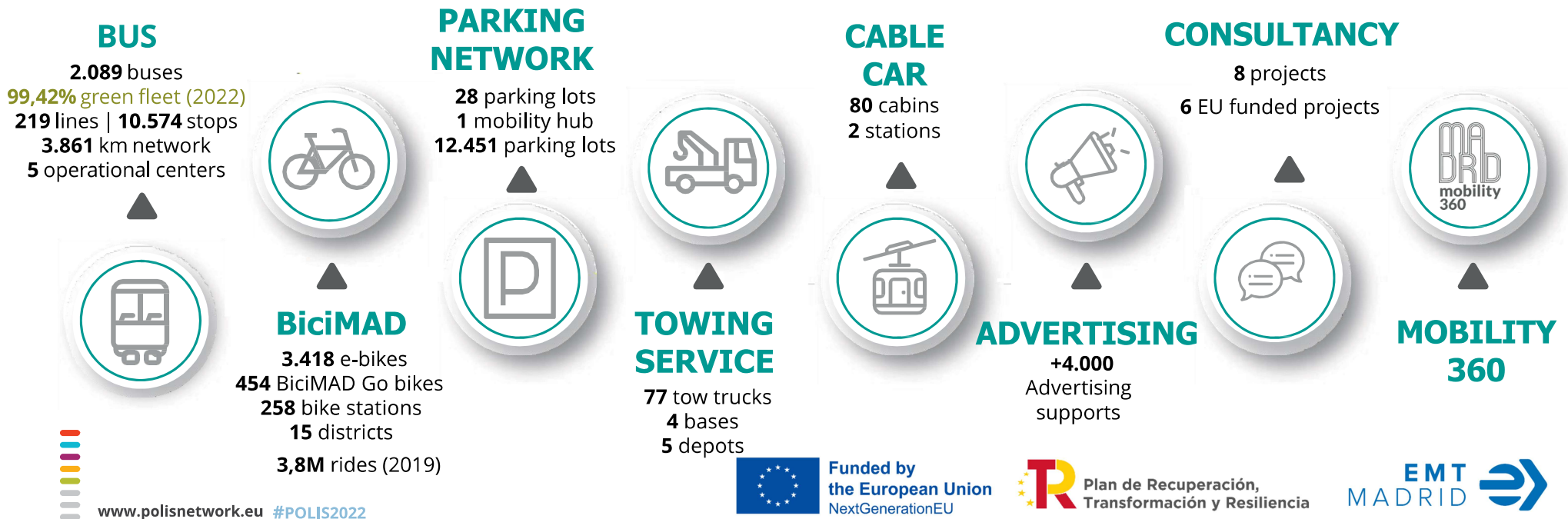


Plan de Recuperación,  
Transformación y Resiliencia



# EMT Madrid – Reference in surface mobility

EMT is the **reference of surface mobility** in the city of Madrid. It counts with 9.816 workers, 8 business lines and 5 Bus Depots that enable the company to provide integrated and client-oriented services that foster a **sustainable and efficient mobility**.





# EMT Madrid – Reference in surface mobility

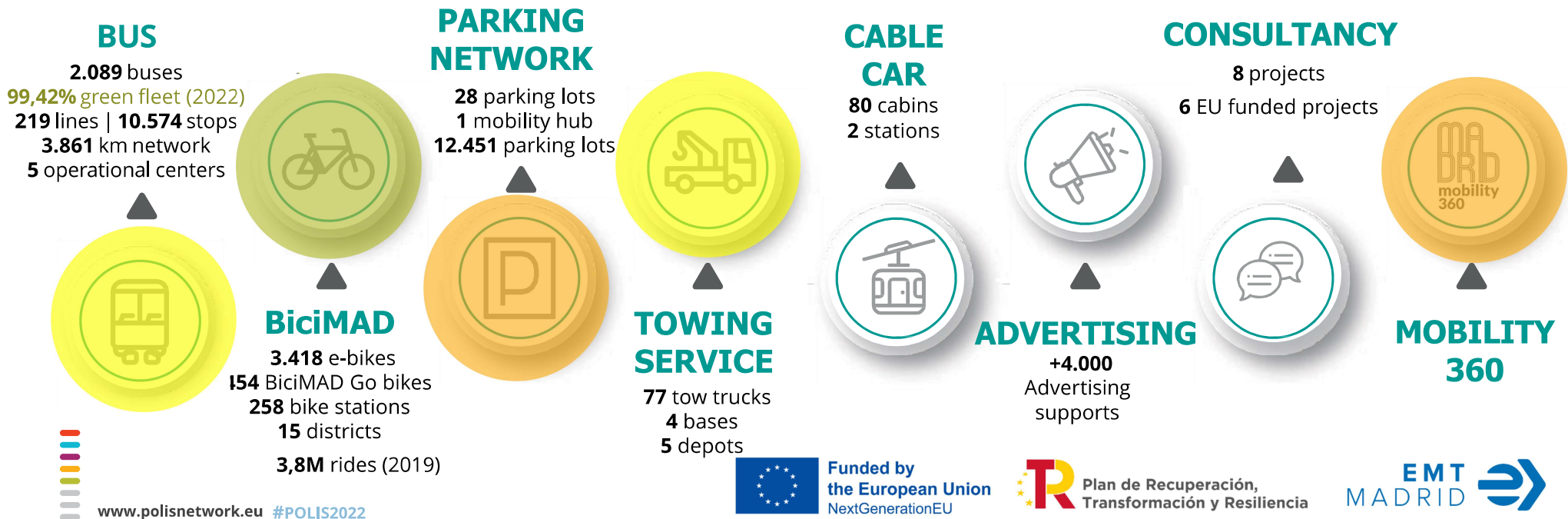
## Strategies to achieve climate neutrality in surface mobility

Strategy 1: Increasing the share in active travel

Strategy 2: Decarbonising public transport

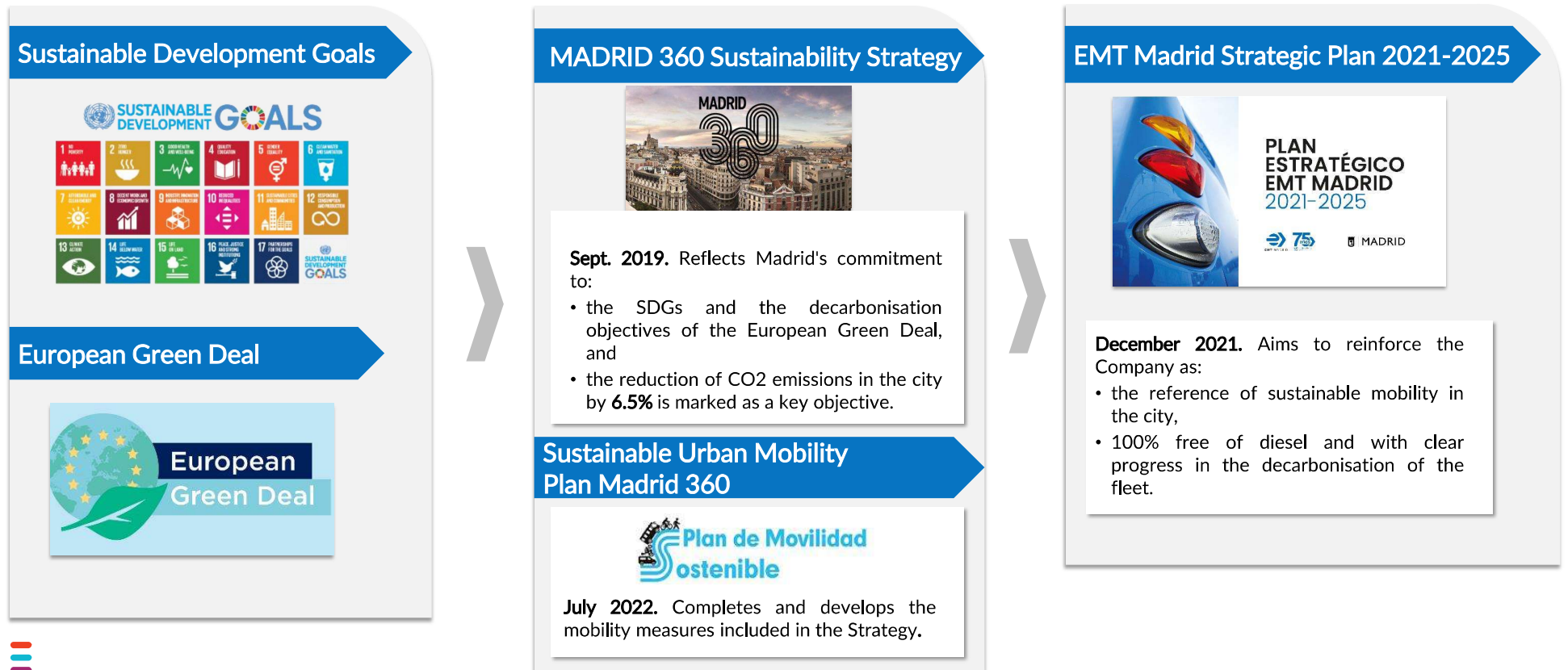
Strategy 3: Promoting multimodality

Strategy 4: Improving access to public transport

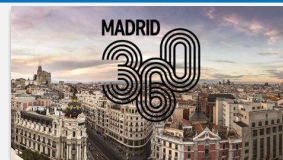


# Strategic framework for EMT

## International roadmap transferred to the local level



### European Green Deal



**Sept. 2019.** Reflects Madrid's commitment to:

- the SDGs and the decarbonisation objectives of the European Green Deal, and
- the reduction of CO2 emissions in the city by **6.5%** is marked as a key objective.

### Sustainable Urban Mobility Plan Madrid 360



**July 2022.** Completes and develops the mobility measures included in the Strategy.



**December 2021.** Aims to reinforce the Company as:

- the reference of sustainable mobility in the city,
- 100% free of diesel and with clear progress in the decarbonisation of the fleet.



# EMT's commitment to climate neutrality

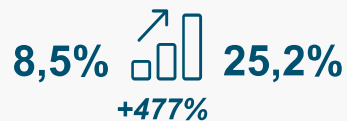
## EMT's Strategic Plan (2021-2025). Main reference indicators

**Vision:** EMT, public company of the city of Madrid, reference and integrating sustainability mobility.

**Corporate objective no. 1:** advance towards a green and decarbonized company, which makes the most of the advantages provided by circular economy.



% electric fleet



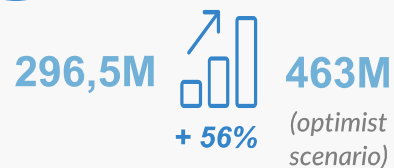
Reduction in NOx emissions (Tons)



Installed solar panels (m<sup>2</sup>)



Million passengers



Total investment

**+1.000 M€**

534M € Bus Acquisition  
290M € Constructions and installations  
177M € Other investments



# NextGenEU Funds



[www.polisnetwork.eu](http://www.polisnetwork.eu) #POLIS2022



Funded by  
the European Union  
NextGenerationEU



Plan de Recuperación,  
Transformación y Resiliencia

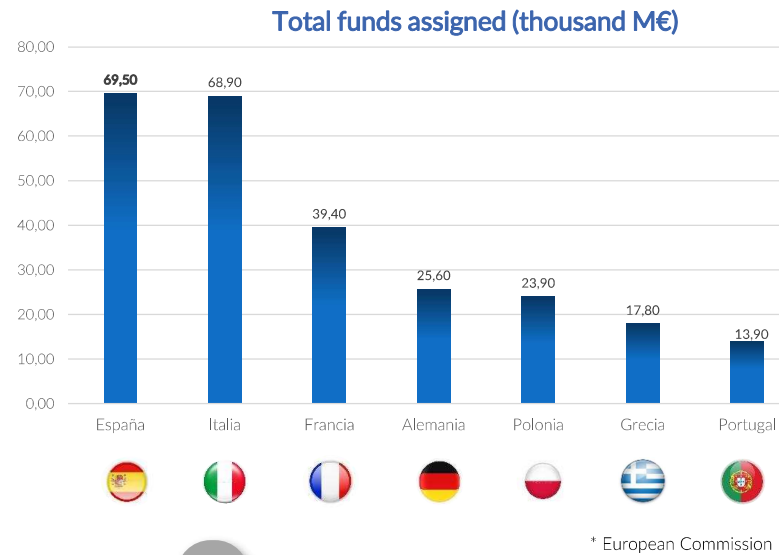




# Next Generation EU funds

## Recovery and Resilience Facility (RRF) in Europe

Within the RRF, the assignment of funds to each country is based on the following parameters



A

70% committed in 2021 and 2022

Assignment criteria:

- Population
- GDP
- Unemployment rates between 2015 and 2019

B

30% remaining until the end of 2023

Assignment criteria:

- Population
- GDP
- Gap GDP 2020 – 2021 (to be calculated in 2022)



# Next Generation EU funds

## Recovery and Resilience Facility in Spain

➤ Total funds assigned to Spain (2021-2023): **69.528 M€**

➤ Total funds received by Spain: **19.000 M€**

➤ Total funds published in calls: **9.300 M€**



Data January 2022 (to update)

Recovery and Resilience Plan: *España Puede*



4 Thematic Areas










10 Levers

30 Components

212 Measures



# Overview of projects funded by NextGenEU

Organising body / Ministries	Call	Status	Funding Amount	Deadline for implementation	Project
MINCOTUR Industry Commerce Tourism	PSTD Local entities 2021	 <b>Granted</b>	2.000.000 €	Dec. 2022	<ul style="list-style-type: none"> <li>• Electric Charging Station Canalejas</li> </ul>
	Integral process of commercial activity (PIAC) 2021	 <b>Granted</b>	562.000 €	Dec. 2023	<ul style="list-style-type: none"> <li>• Charging points (PdR) Parking</li> </ul>
	Strengthening of commercial activity 2021	 <b>Granted</b>	3.500.000 €	Dec. 2022	<ul style="list-style-type: none"> <li>• Support activities Canalejas (Screens)</li> <li>• Accessible bus stops</li> <li>• Parking Recoletos</li> </ul>
	Network of Intelligent Tourism Destinations	 <b>Resolution pending</b>	180.000 €	Dec. 2023	<ul style="list-style-type: none"> <li>• Smart Tourism and Mobility Madrid</li> </ul>
	Strengthening of commercial activity 2022	 <b>Resolution pending</b>	2.000.000 €	June 2024	<ul style="list-style-type: none"> <li>• Accessible bus stops</li> <li>• Improvement accessibility parkings</li> </ul>
MITECO Ecological transition Demographic challenge	FES-CO2	 <b>Granted</b>	422.207 €	Jan 2026	<ul style="list-style-type: none"> <li>• Emission reduction</li> </ul>
MITMA Transport Mobility Urban agenda	Low emission zones 2021	 <b>Granted</b>	99.700.000 €	Dec. 2024	<ul style="list-style-type: none"> <li>• Fleet renovation with 100% electric buses (206 buses)</li> <li>• Electrification del Carabanchel Operational Centre</li> <li>• BiciMAD transformation and system extension</li> <li>• MaaS. Evolution of the Mobility 360 ecosystem</li> </ul>
	Direct financial support bus	 <b>Granted</b>	2.019.700 €	N/A	<ul style="list-style-type: none"> <li>• Direct fin. Aid for public companies of urban buses affected by the rise in prices of fuel</li> </ul>
	Low emission zones 2022	 <b>Resolution pending</b>		Dec. 2024	<ul style="list-style-type: none"> <li>• BiciMAD system extension</li> <li>• Electric and hydrogen bus acquisition</li> <li>• Charging infrastructure (acquisition and installation)</li> </ul>

# Climate Action

## Strategies to achieve climate neutrality in surface mobility

Strategy 1: Increasing the share in active travel

Strategy 2: Decarbonising public transport

Strategy 3: Promoting multimodality

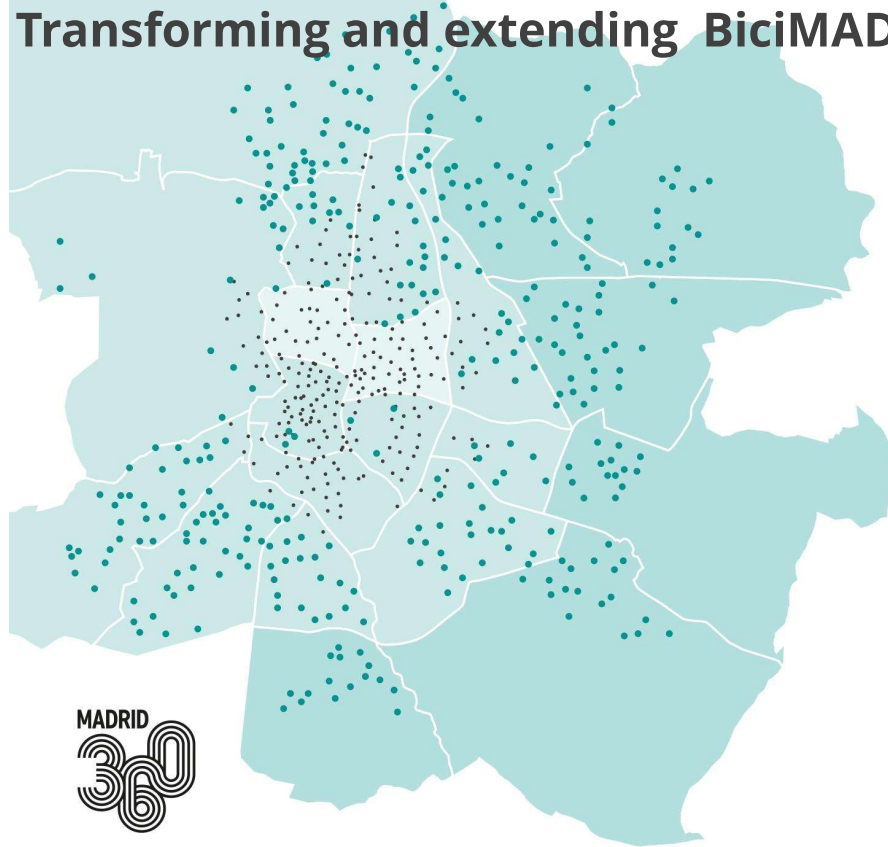
Strategy 4: Improving access to public transport





# S1: Increasing active travel

## Transforming and extending BiciMAD service



NEXTGENFUD FIN. SUPPORT:  
MITMA ZBE 2021: approx. 30 M € ✓  
MITMA ZBE 2022: approx. 10.5 M € ?

**Public tender**  
Technological transformation  
System extension



7.500 bikes  
600 stations  
Hybrid operation

NEXT STEPS: SYSTEM  
EXTENSION TO THE WHOLE  
MUNICIPALITY

# S2: Decarbonising the bus fleet

## Bus fleet electrification

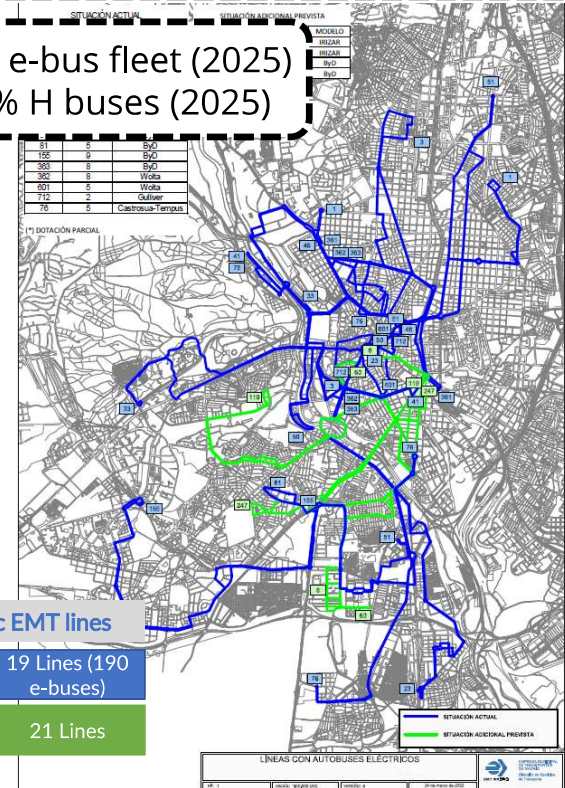
Evolution of the EMT Madrid fleet: Forecast by fuel type

Fuel	2020	2021	2022	2023	2024	2025	2026	2027
Diesel	388	196						
NGC	1.552	1.678	1.829	1.744	1.661	1.561	1.451	1.351
Hybrid	47	47	17					
Hydrogen				10	10	10	20	20
Electric	81	179	254	329	429	529	629	729
Total	2.068	2.100	2.100	2.100	2.100	2.100	2.100	2.100
% Electric fleet	3,9%	8,5%	12,1%	15,7%	20,4%	25,2%	30,0%	34,7%

Evolution of the composition of the EMT bus fleet at the end of the year (units).

NEXTGENFUD FIN. SUPPORT:  
 MITMA 2021: 41.2M € (206 e-buses) ✓  
 MITMA 2022: ?  
 • 22 M € (100 e-buses)  
 • 2.7M € (10 hydrogen buses)

58% e-bus fleet (2025)  
 100% H buses (2025)



100% electric EMT lines

Currently 19 Lines (190 e-buses)

December 2022 forecast 21 Lines

# S2: Decarbonising the bus fleet

## Carabanchel bus depot electrification

NEXTGENFUD FIN. SUPPORT:

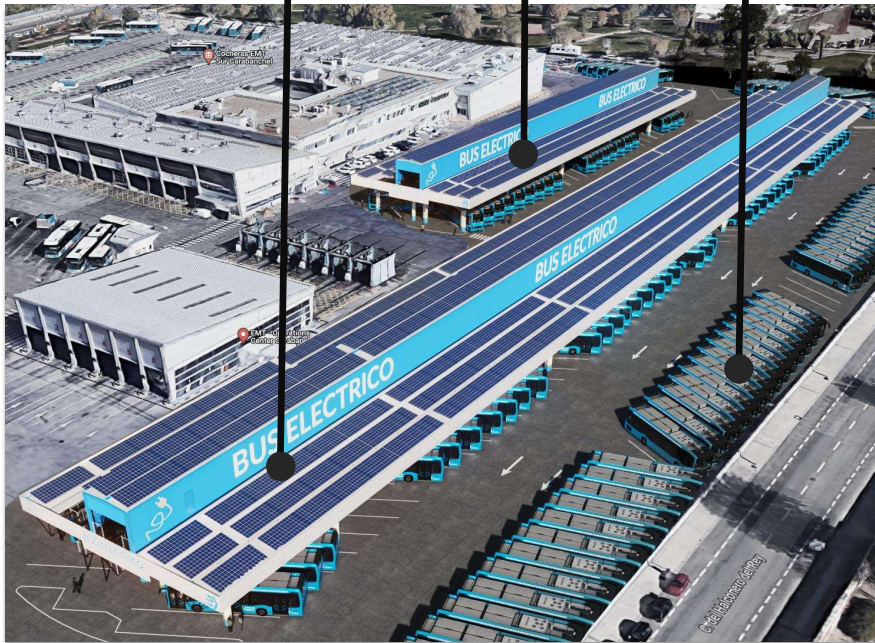
MITMA ZBE 2021: approx. 19 M € ✓

MITMA ZBE 2022: approx. 4M € ?

Phase 3  
Project

Phase 2  
Ongoing  
works

Phase 1  
Executed



Phase 2 – pantograph chargers

C.O. Carabanchel. Phases.  
[www.polisnetwork.eu](http://www.polisnetwork.eu) #POLIS2022

Funded by  
the European Union  
NextGenerationEU

Plan de Recuperación,  
Transformación y Resiliencia

EMT  
MADRID



## S3: Promoting multimodality

### Canalejas 360 mobility hub

NEXTGENFUD FIN. SUPPORT:  
MINCOTUR PSTD 2021: approx. 2M € ✓  
MINCOTUR 2021: 300.000 € ✓

#### REFERENCE MOBILITY HUB

Electric station (2'4 MW) – Chargers (up to 400KW)  
Area for Sharing  
Hub Pick-up / Consolidation Centre  
Lockers  
BiciPARK  
Battery swap

>>Inauguration 2022



[www.polisnetwork.eu](http://www.polisnetwork.eu) #POLIS2022





# S4: Improving access to public transport

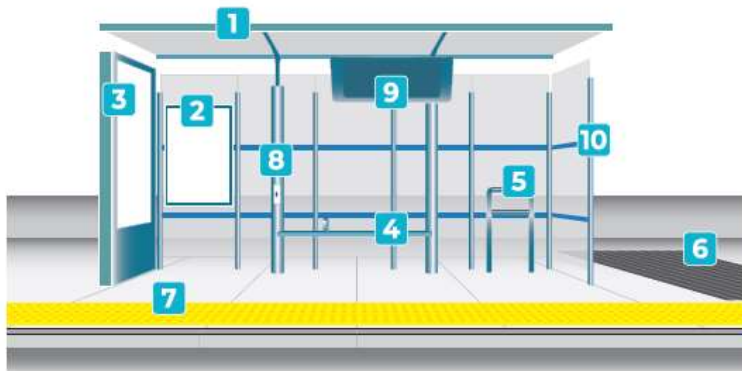
## Improving accessibility of bus stops

NEXTGENFUD FIN. SUPPORT:

MINCOTUR 2021: 300.000€ ✓

MINCOTUR 2022: 640.000€ ?

### Elementos de parada EMT



1 Techo

2 Cuadro horario con braille

3 Mupi

4 Asiento con reposabrazos

5 Apoyo isquiático

6 Franja de detección tacto-visual

7 Franja tacto-visual de bordillo

8 Botón accionamiento audio

9 Panel mensajería con audio

10 Bandas contrastadas



Funded by  
the European Union  
NextGenerationEU



Plan de Recuperación,  
Transformación y Resiliencia



# Conclusions



[www.polisnetwork.eu](http://www.polisnetwork.eu) #POLIS2022



Funded by  
the European Union  
NextGenerationEU



Plan de Recuperación,  
Transformación y Resiliencia



# EMT´s strategy for the management of EU funds

- Ensuring effective communication:
  - Cooperation with Spanish ministries
  - Cooperation with Madrid City Council
  - Internal cooperation: transforming business as usual operation between departments
- Creation of a new department focused specifically on the management of EU funds
- Optimized processes for fund search and project monitoring
- Overall strategy: EU funds are helping fast-track projects that were already included in EMT´s strategy
- Current balance: not only funds have been achieved but they are also being implemented successfully



# Thank you for your attention!

For questions: [mariajose.rojo@emtmadrid.es](mailto:mariajose.rojo@emtmadrid.es)



[www.polisnetwork.eu](http://www.polisnetwork.eu) #POLIS2022



Funded by  
the European Union  
NextGenerationEU



Plan de Recuperación,  
Transformación y Resiliencia

