

POLIS

CITIES AND REGIONS FOR TRANSPORT INNOVATION

ANNUAL
CONFERENCE

2022

30 November
1 December, 2022
Brussels, Belgium



#POLIS2022

Regional sustainable mobility governance

**Enabling long-term resilience within the rural-urban connectivity of
Ljubljana urban region**

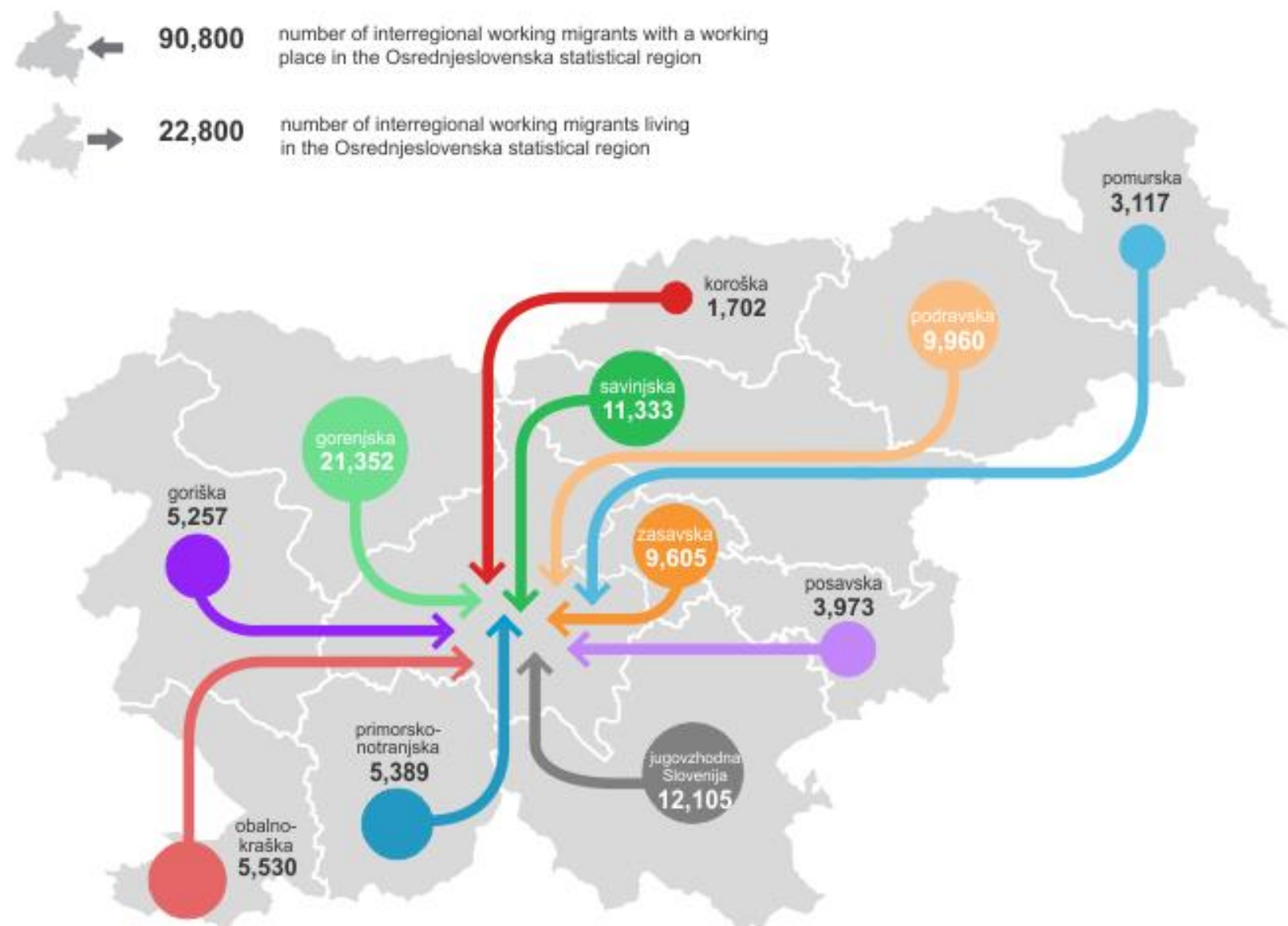
Klemen Gostič

Adviser to the Director for Cohesion Policy

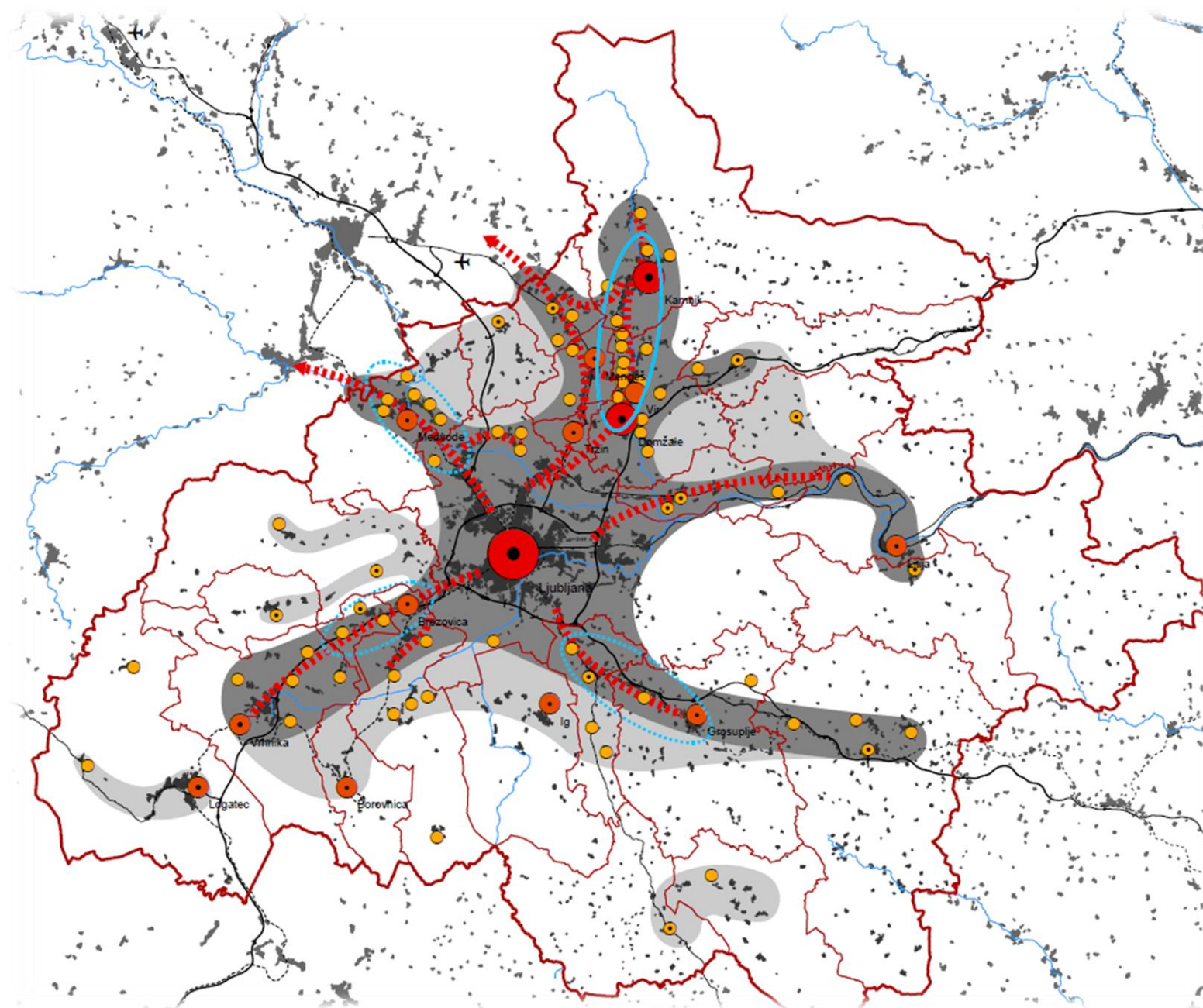
Regional development agency of the Ljubljana urban region

Mobility situation in Ljubljana urban region

Labour migrations, statistical regions, 2018

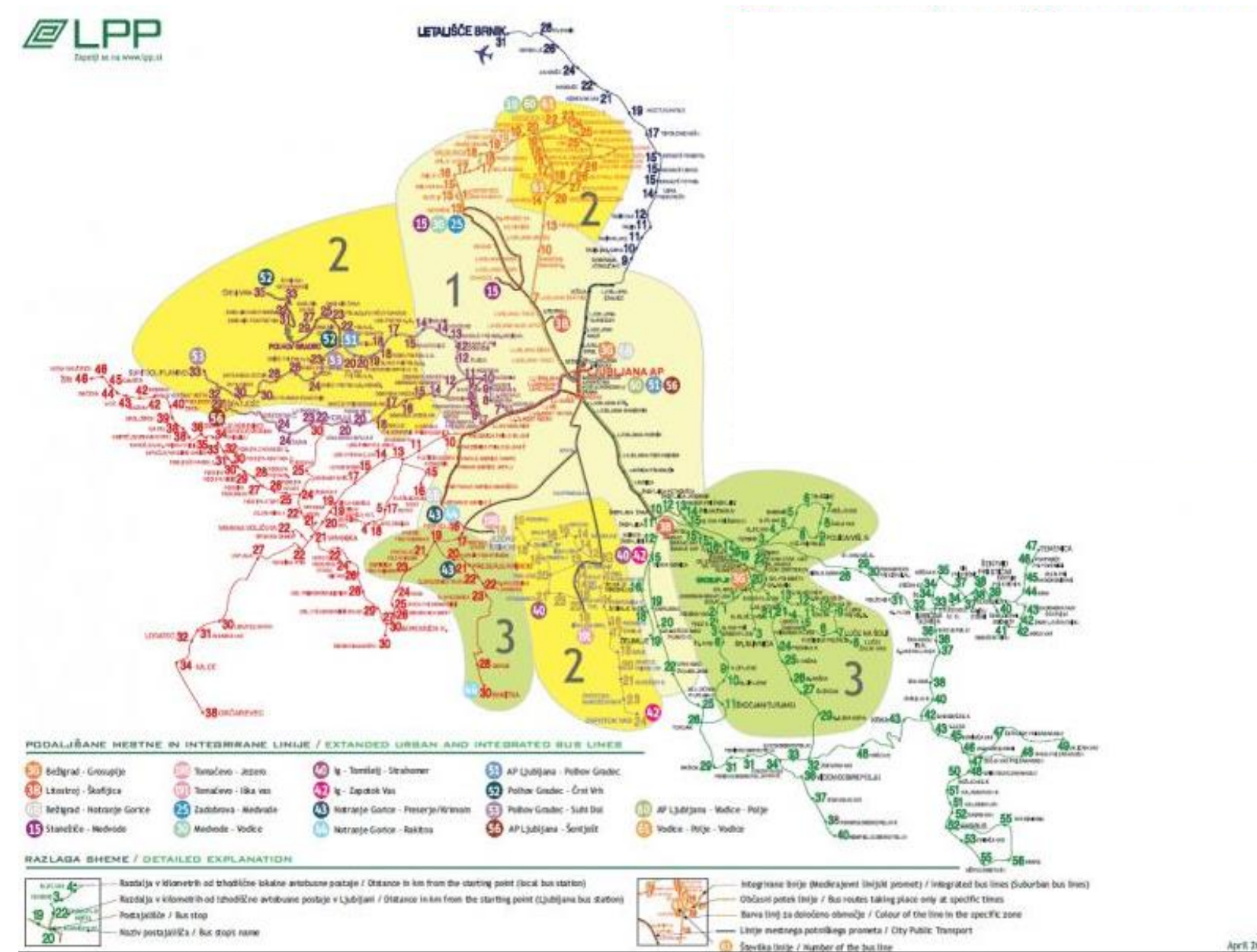


Source: GURS, SURS

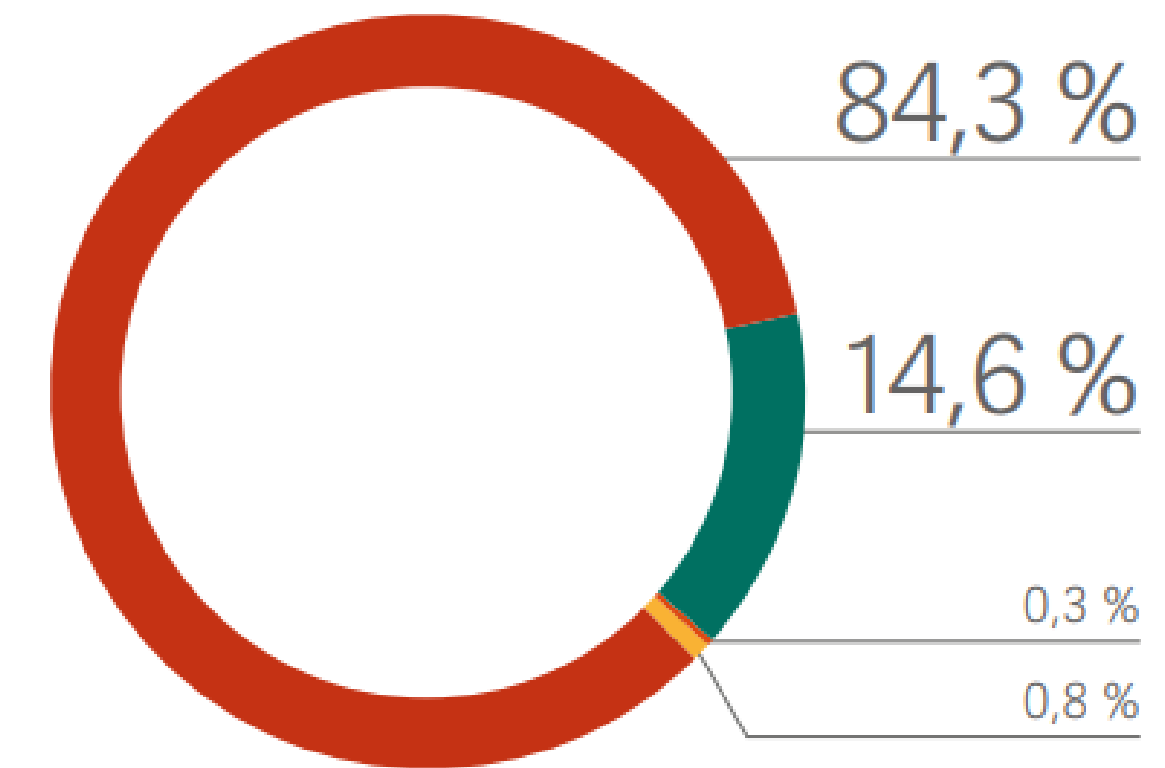


Mobility situation in Ljubljana urban region

Urban & peri-urban bus connections & tariff zones



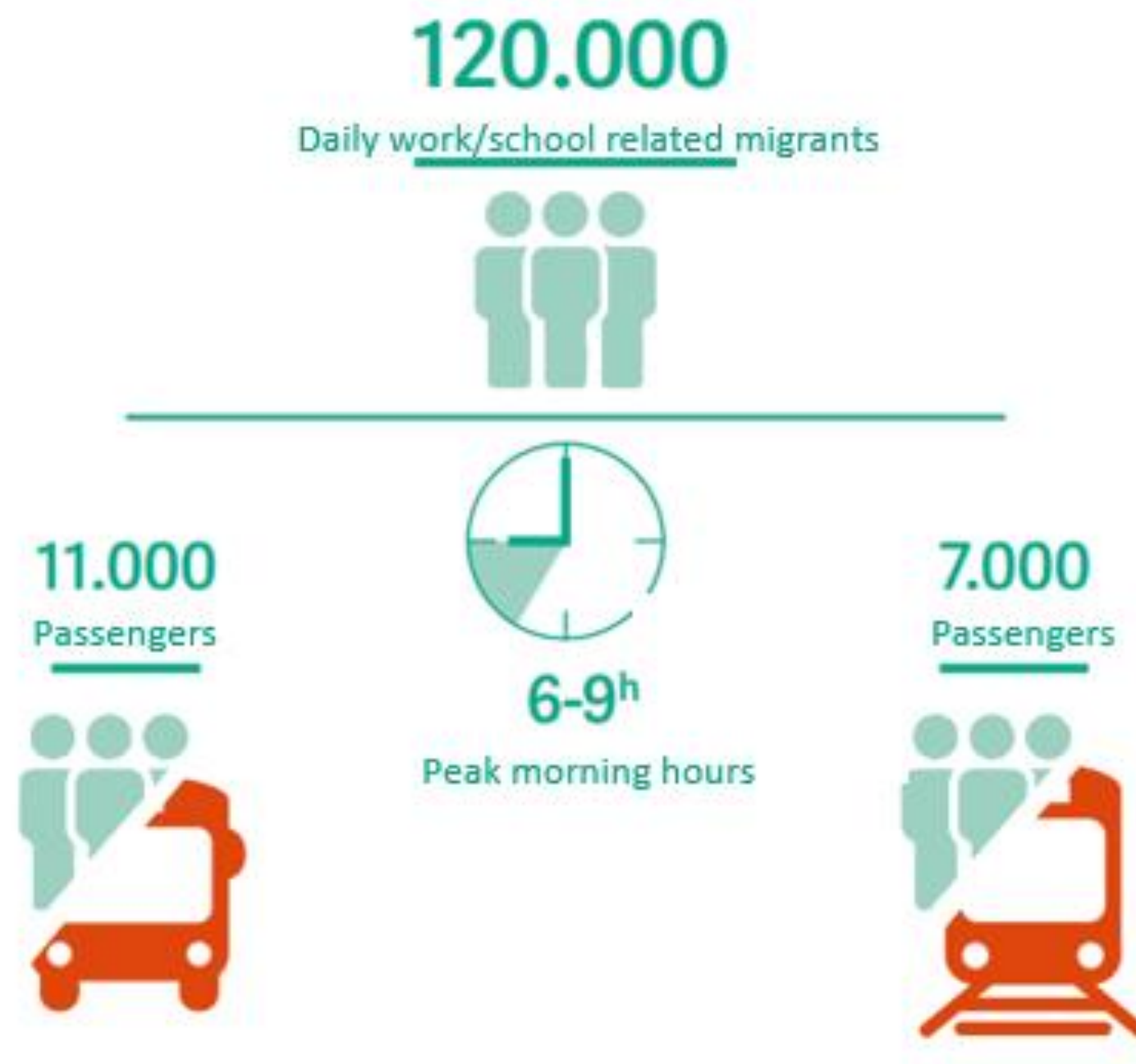
Modal split from other SI regions to LUR



- █ Car
- █ Public transport
- █ Bicycle
- █ Walking

SUMP LUR, 2018





Number of available passengers' places at peak times (6h-9h) in comparison to needs!

Regional approach to mobility



- **Need for better regional approach to the mobility coordination**
- **Multi-level stakeholders inclusion (transport operators, industry, employers, ...)**
- **Increase of public involvement**



https://www.canva.com/sl_si/

www.polisnetwork.eu #POLIS2022

Regional approach to mobility

Decision-making bodies of LUR

Consultative bodies of LUR in transport

LUR council

LUR Development Council

Coordination Committee
for
Public Transport

Coordination
Committee for
Sustainable mobility

Mayors of 25
LUR
municipalities

- 26 municipal officials
- 26 representatives from the private sector
- 13 representatives of NGOs

- 11 members including:
- municipal representatives
 - representatives of Slovenian Railways
 - Regular transport service providers

- Mayors of 25 municipalities of Ljubljana urban region
- Participation from interested parties



Ljubljana urban region SUMP



Ljubljana urban region SUMP

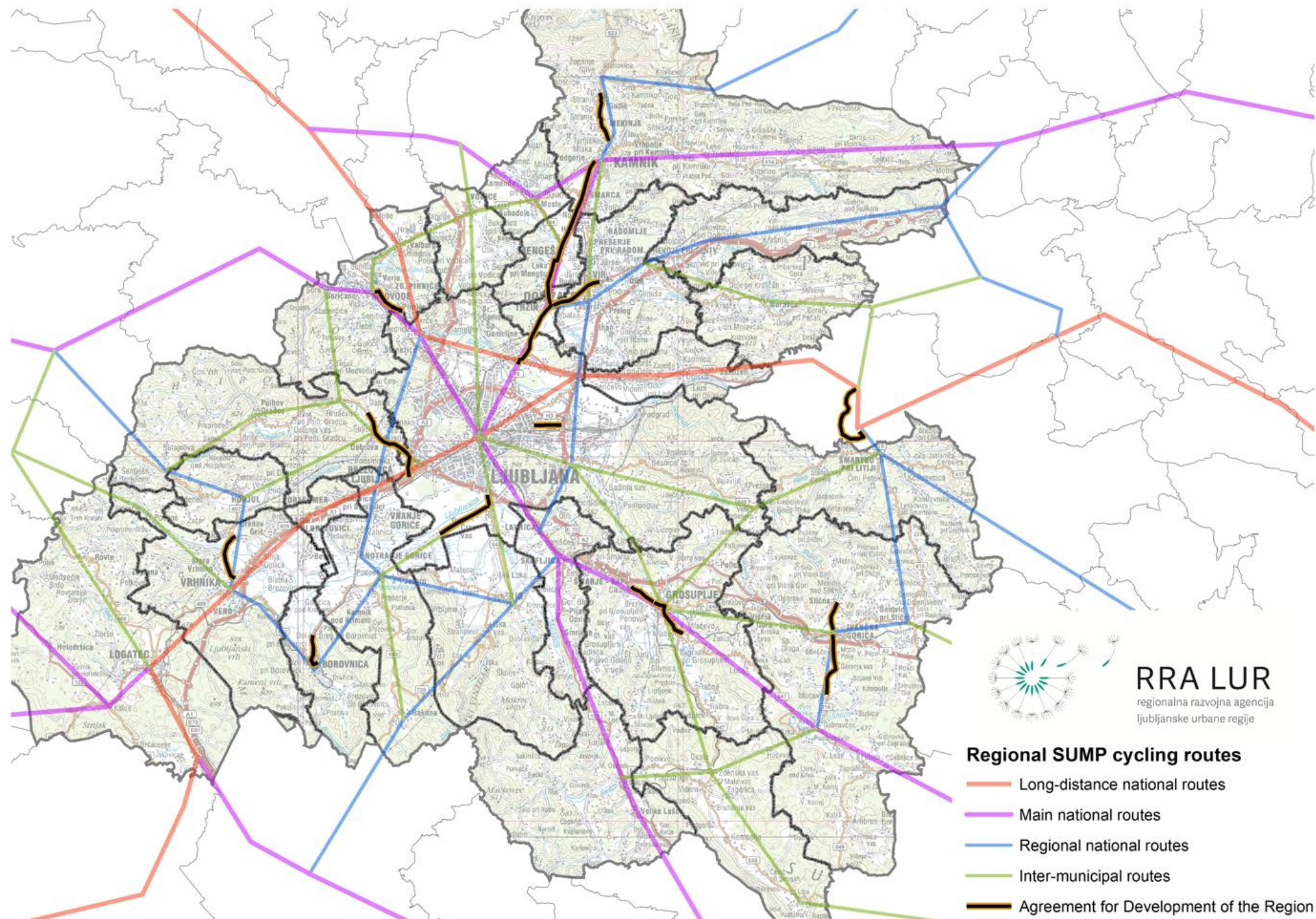


Regional mobility centre's

- Improved system of planning and managing SM
- Up-scaling professional capacities and intensified permanent collaboration
- Employers approach & corporate mobility

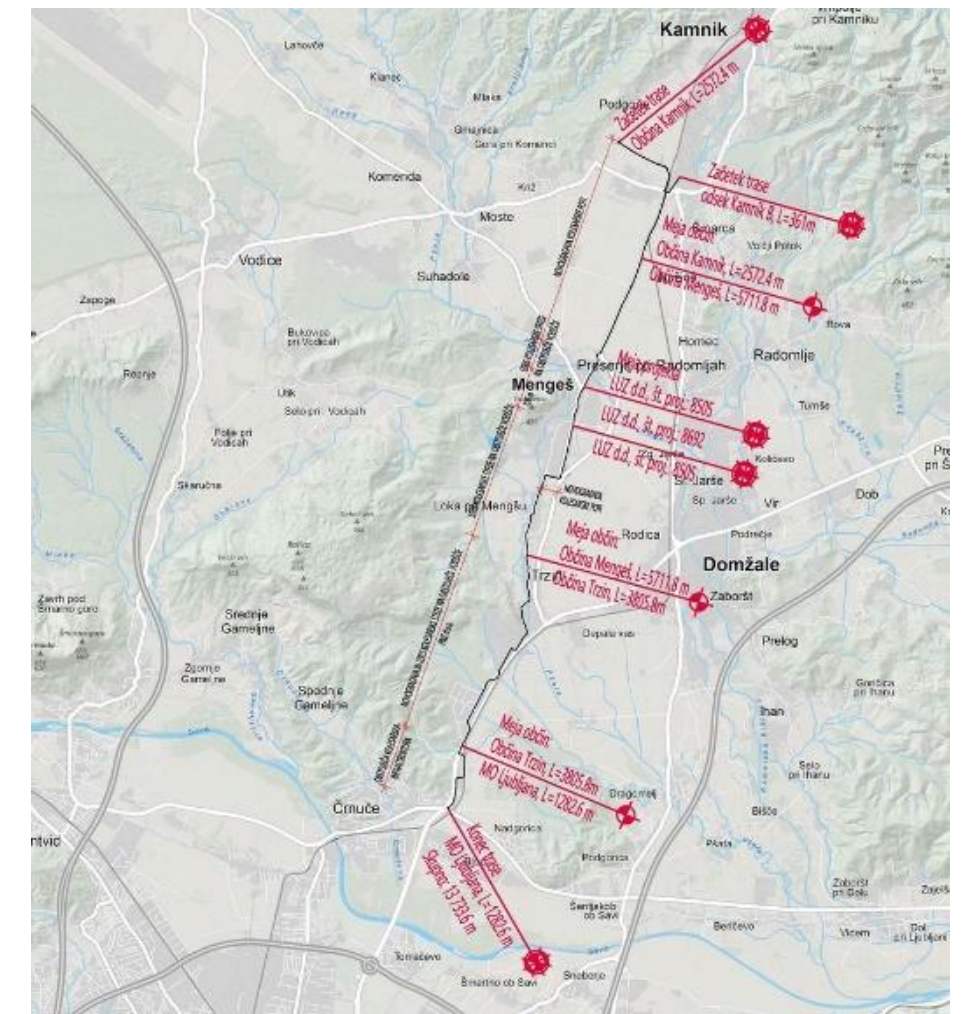


Main interventions - cycling



SUMP LUR, 2018

www.polisnetwork.eu #POLIS2022



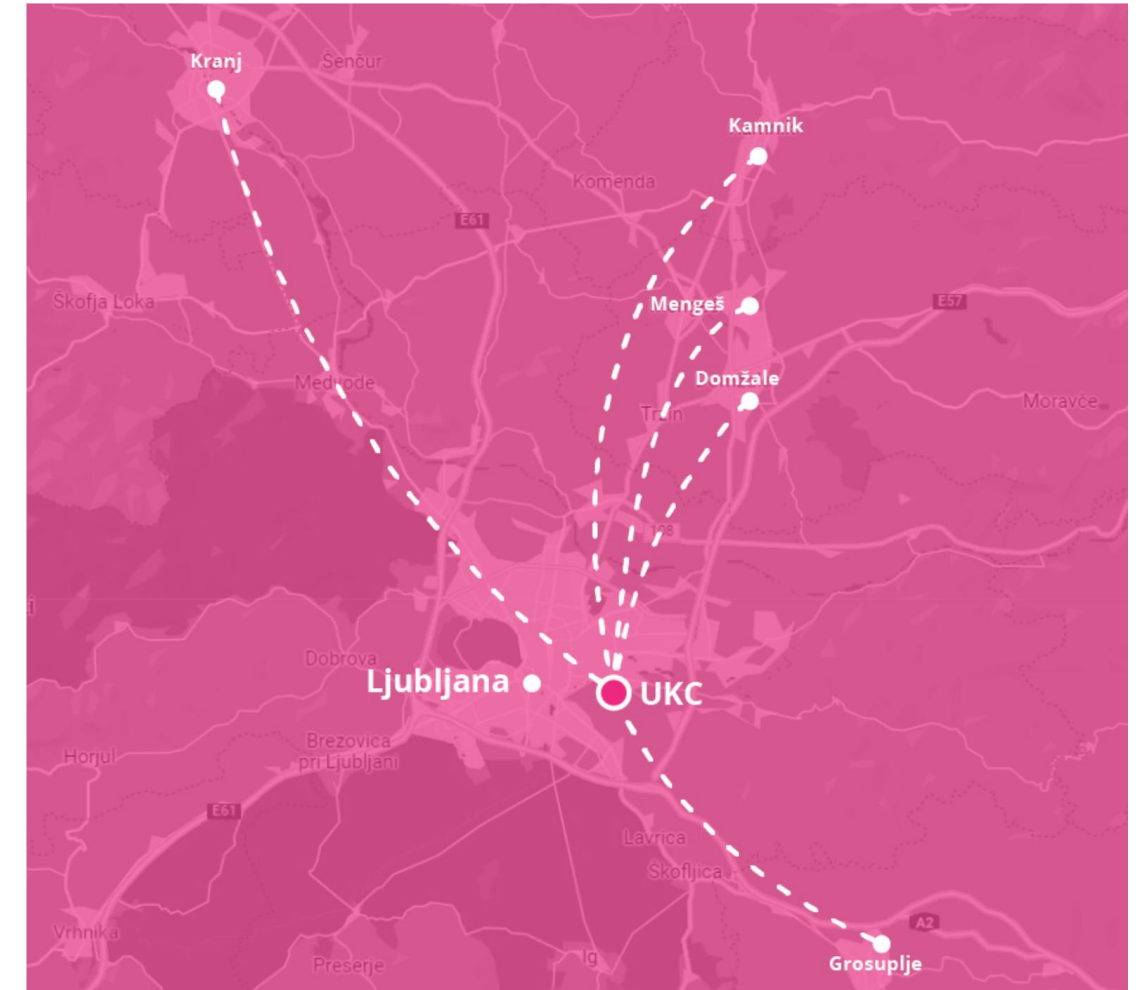
<https://www.gov.si/zbirke/projekti-in-programi/dogovori-za-razvoj-regij/>



<https://projects2014-2020.interregeurope.eu/smart-mr/>

Main interventions – corporate mobility

- **Need for more flexible solutions: 5 regional employers (14.500 employees)**
- **Regional employers mobility auditing & certification**
- **System of „mobility managers“**





RRA LUR

regional development agency
of Ljubljana urban region



**RCM
LUR**

sofinancira

Iceland
Liechtenstein
Norway grants

**SMART
MO**

Smart Solutions for
Sustainable Mobility

Thank you for your attention!

Klemen Gostič

Regional development agency of the Ljubljana urban region

klemen.gostic@rralur.si



00386 51 258 590



klemen.gostic



www.polisnetwork.eu #POLIS2022