

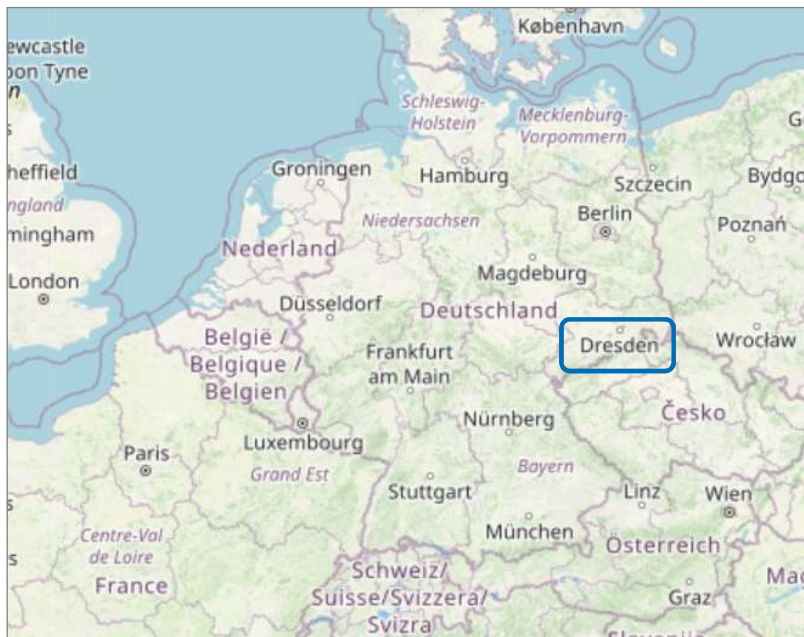


# Connecting the dots

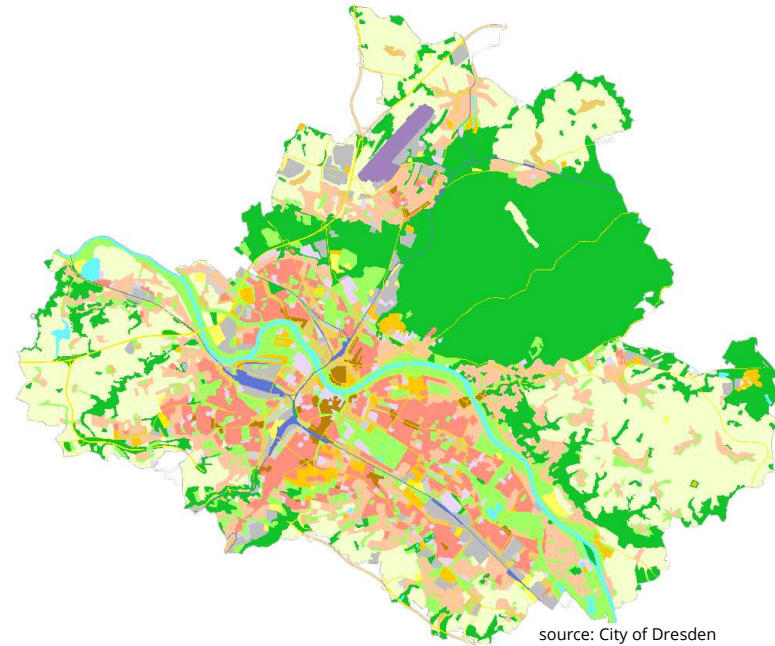
The shift in focus towards cycle route-based planning in the City of Dresden, Germany  
2E. Integrating Cycling On All Levels

*Marie Sanders, Cycling Planner, City of Dresden, Germany*

# Dresden, Germany



source: openstreetmap.org



source: City of Dresden



source: Gerhard Otto Luftbildvertrieb Niederwilligen

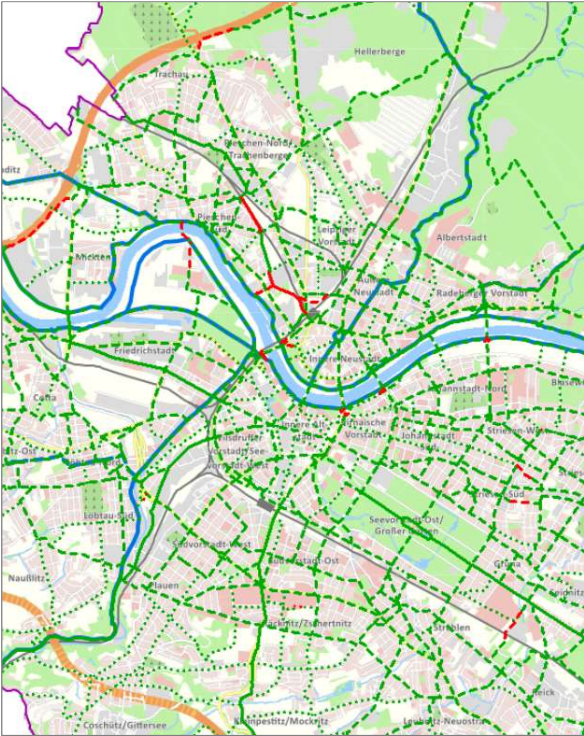
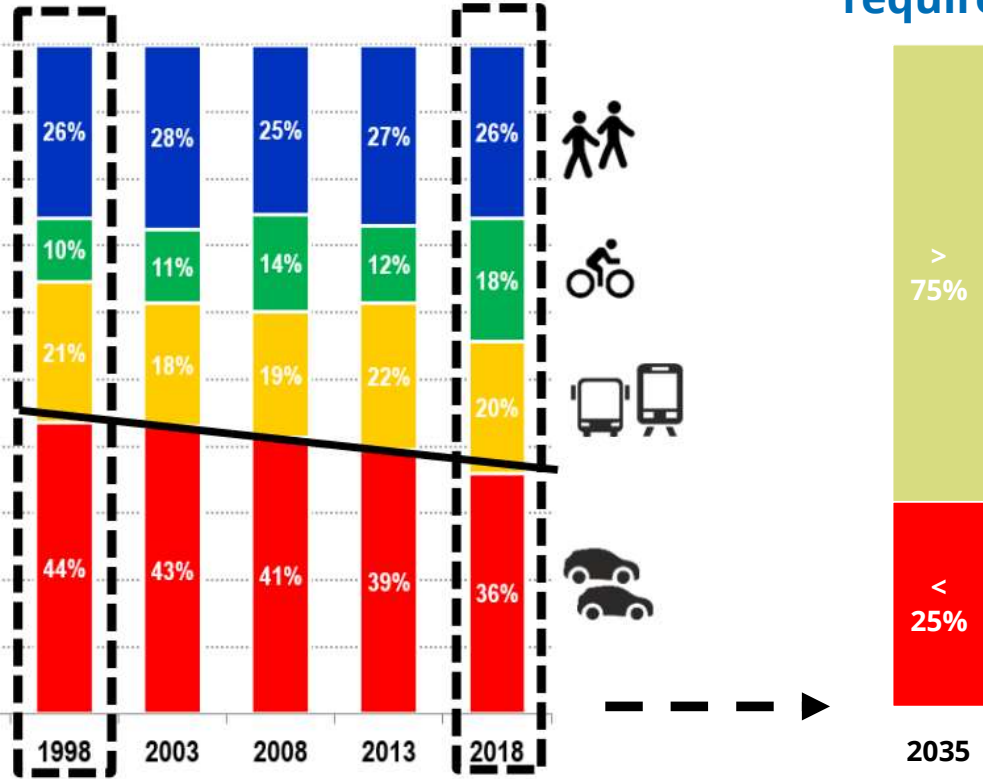




# Shift In Modal Share

climate neutral by 2035 requires:

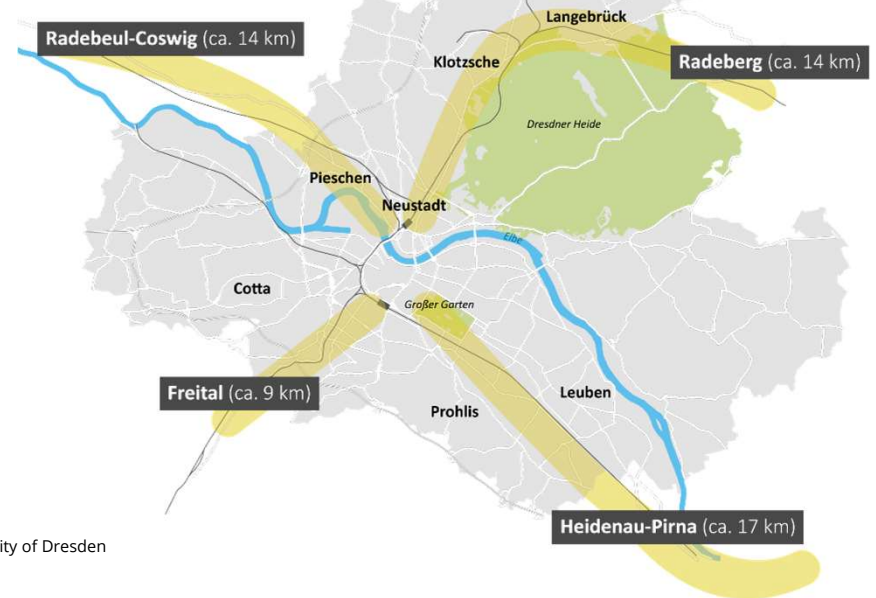
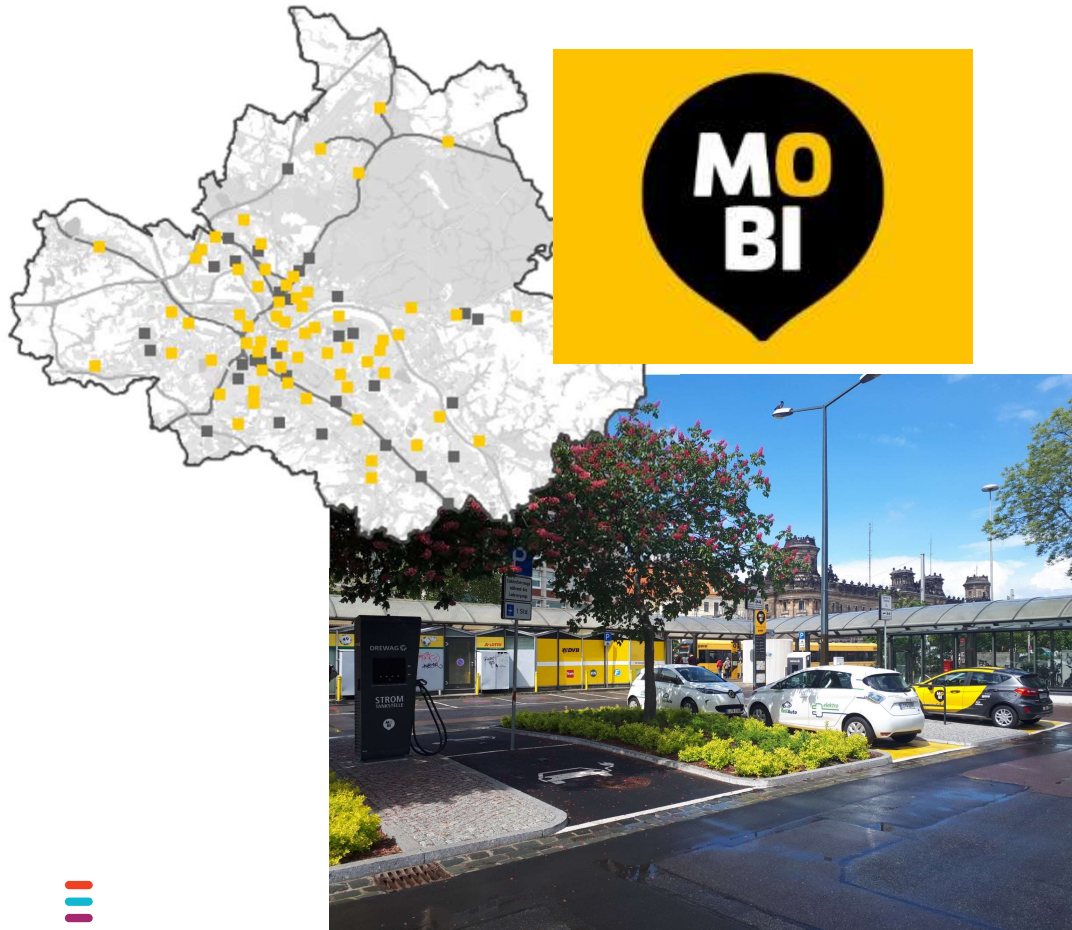
cycling strategy



source: City of Dresden

source: mobility in cities, survey of representative travel surveys, city of Dresden 2018  
[www.polisnetwork.eu](http://www.polisnetwork.eu) #POLIS2022

# Connecting the dots



sources: City of Dresden



# Connecting the dots



**Dresden radelt auf Fahrradstraßen**

entspannt    gemeinsam    sicher

**Fahrradstraße**  
frei

für alle gilt max. 30 km/h    nebeneinander fahren ist erlaubt    Autos nehmen besonders Rücksicht

Dresden



sources: City of Dresden

# Thank you for your attention!

For questions:

Marie Sanders | [msanders@dresden.de](mailto:msanders@dresden.de) | [dresden.de/radverkehr](https://dresden.de/radverkehr)



# Cycle highways – Germany

