

POLIS

CITIES AND REGIONS FOR TRANSPORT INNOVATION

ANNUAL
CONFERENCE
2022

30 November
1 December, 2022
Brussels, Belgium



#POLIS2022

2D: Collecting and monitoring SPI-data in the Netherlands: What about human behaviour?

Wilma Slinger Project manager CROW/Knowledge Center SPV

Introduction

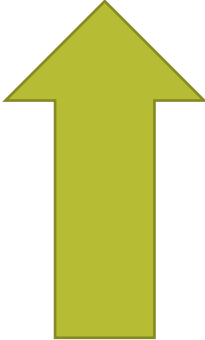
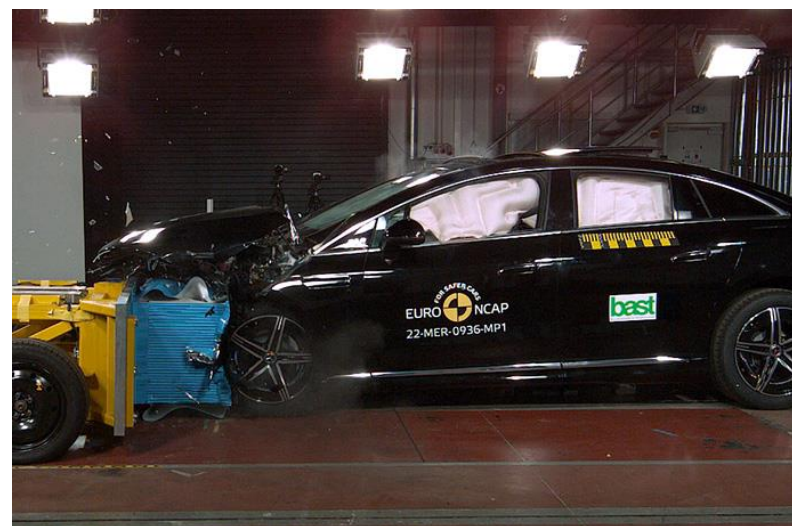




Road safety policy 2030

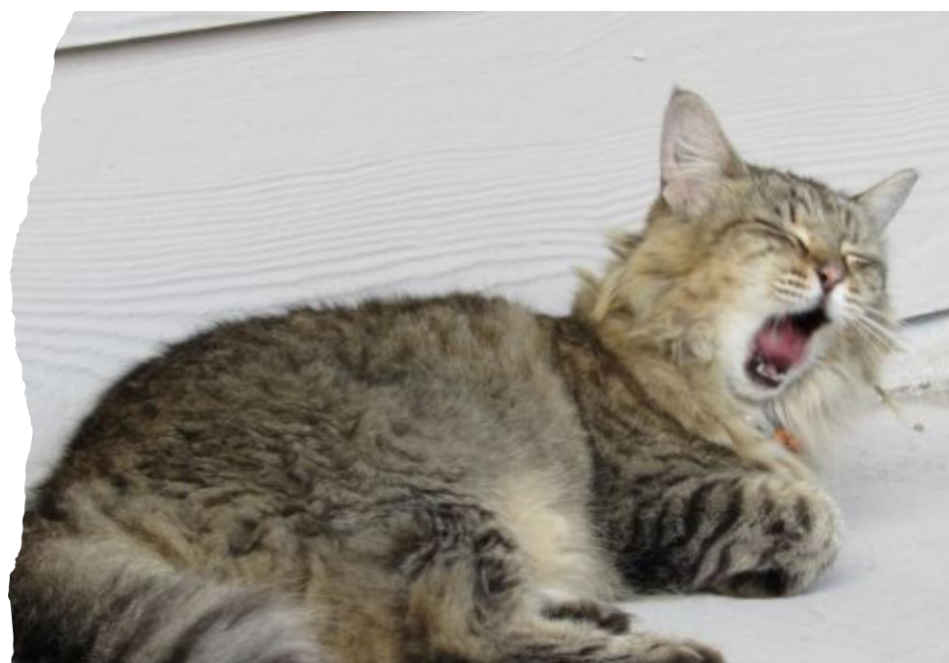


Road Safety Performance Indicators





Safe road user



... operationalisation not easy



Betty Spackman



The research by

Goudappel



veiligheid  nl



Ministerie van Justitie
en Veiligheid



Ministerie van Infrastructuur
en Waterstaat



Choices based on...



Ways of monitoring



Combinations



Monitoringdesign





On-street observations



Self reporting



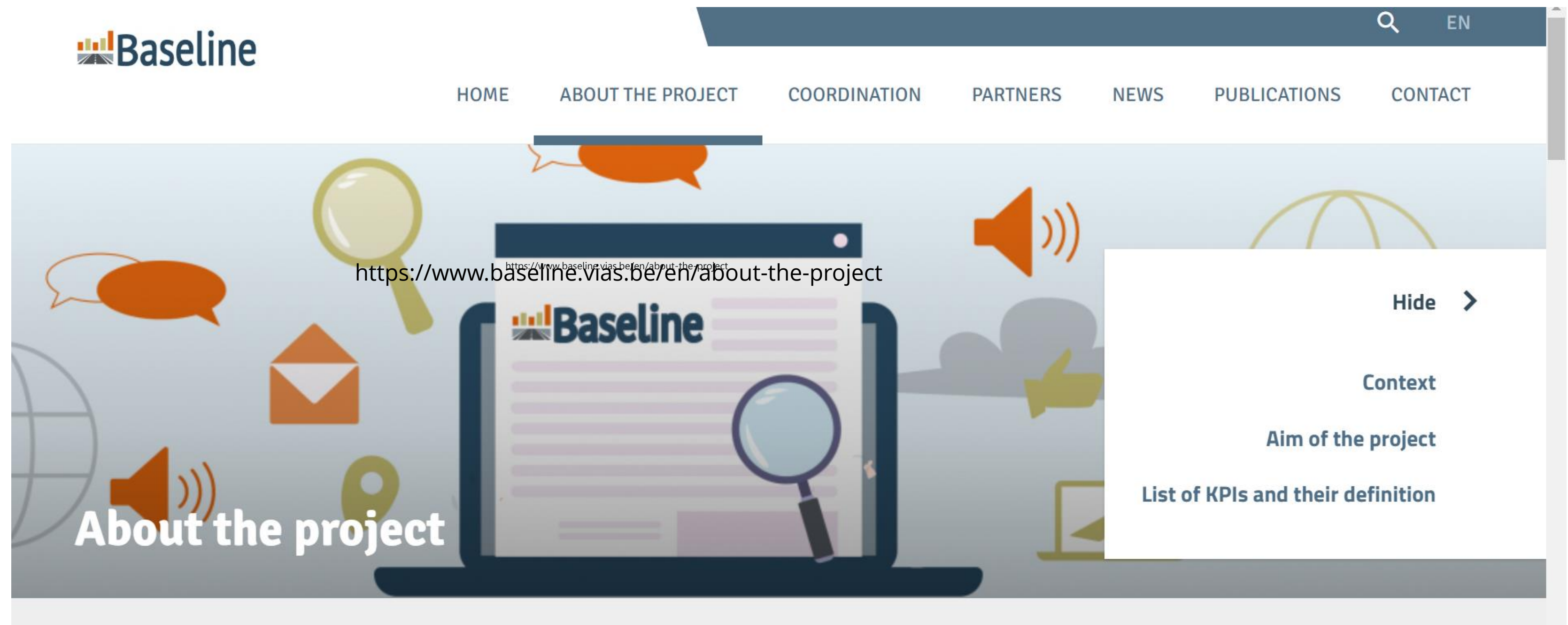


Frequency

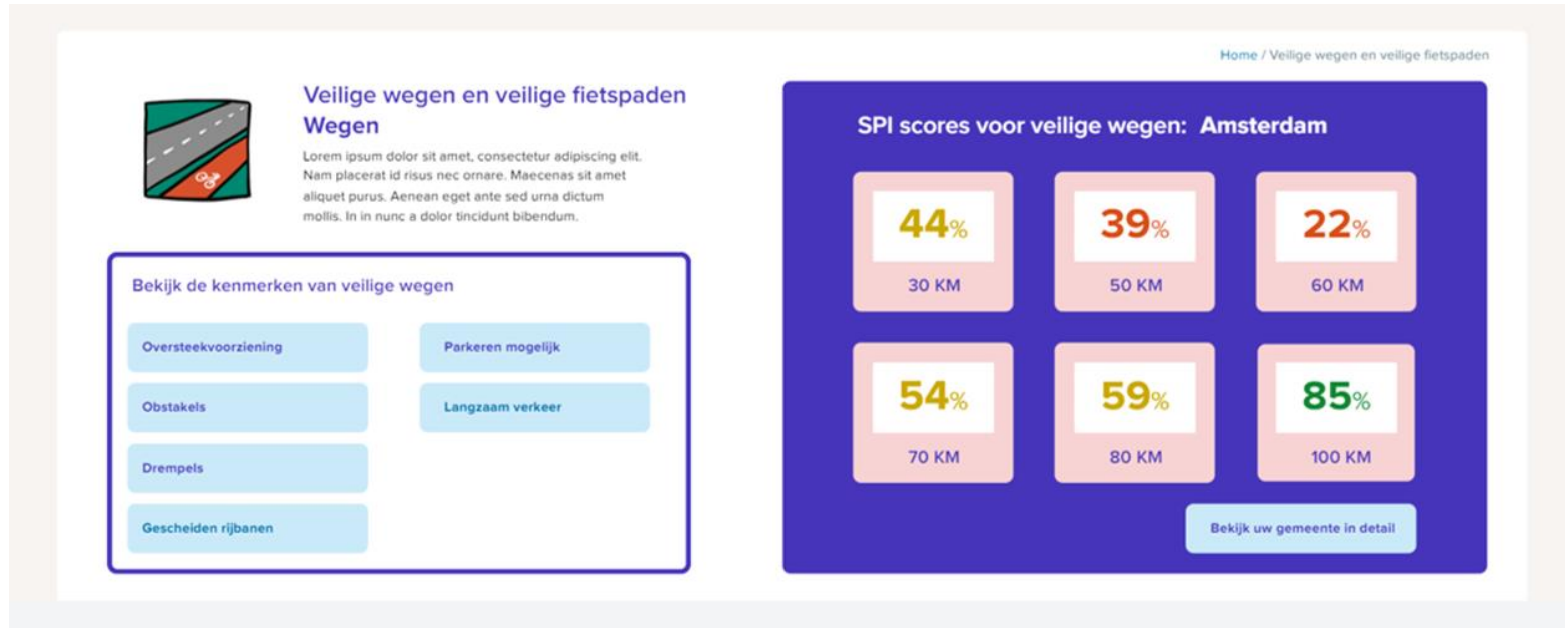
Use of other sources?



Relation with Baseline



Dashboard



Risk-checklist





Innovation

Thank you for your attention!

For questions:

- Wilma Slinger

wilma.slinger@crow.nl , 06-5123 1628

- Lysanne de Gijt

lysanne.de.gijt@rws.nl , 06-5205 7843

