

POLIS

CITIES AND REGIONS FOR TRANSPORT INNOVATION

ANNUAL
CONFERENCE

2022

30 November
1 December, 2022
Brussels, Belgium



#POLIS2022

Empathic vehicles: Detection of occupant emotion in autonomous vehicles to adapt the response

Session 2.D – Squeezing insight from safety data

Dr. José Solaz

Scientific Director

IBV (Instituto de Biomecánica de Valencia)



The Future Is Not What It Used To Be

Lawrence Peter "Yogi" Berra



Picture by Riccardo



Acceptability

4,7

in a scale from 1 to 7

7.600 responses in EU countries

Source: www.suaave.eu

www.polisnetwork.eu





FRAGILE
HANDLE WITH CARE





Do you trust me?

Perceived control	3,7
Perceived pleasure	3,9
Perceived safety	4,1
Perceived convenience	4,2

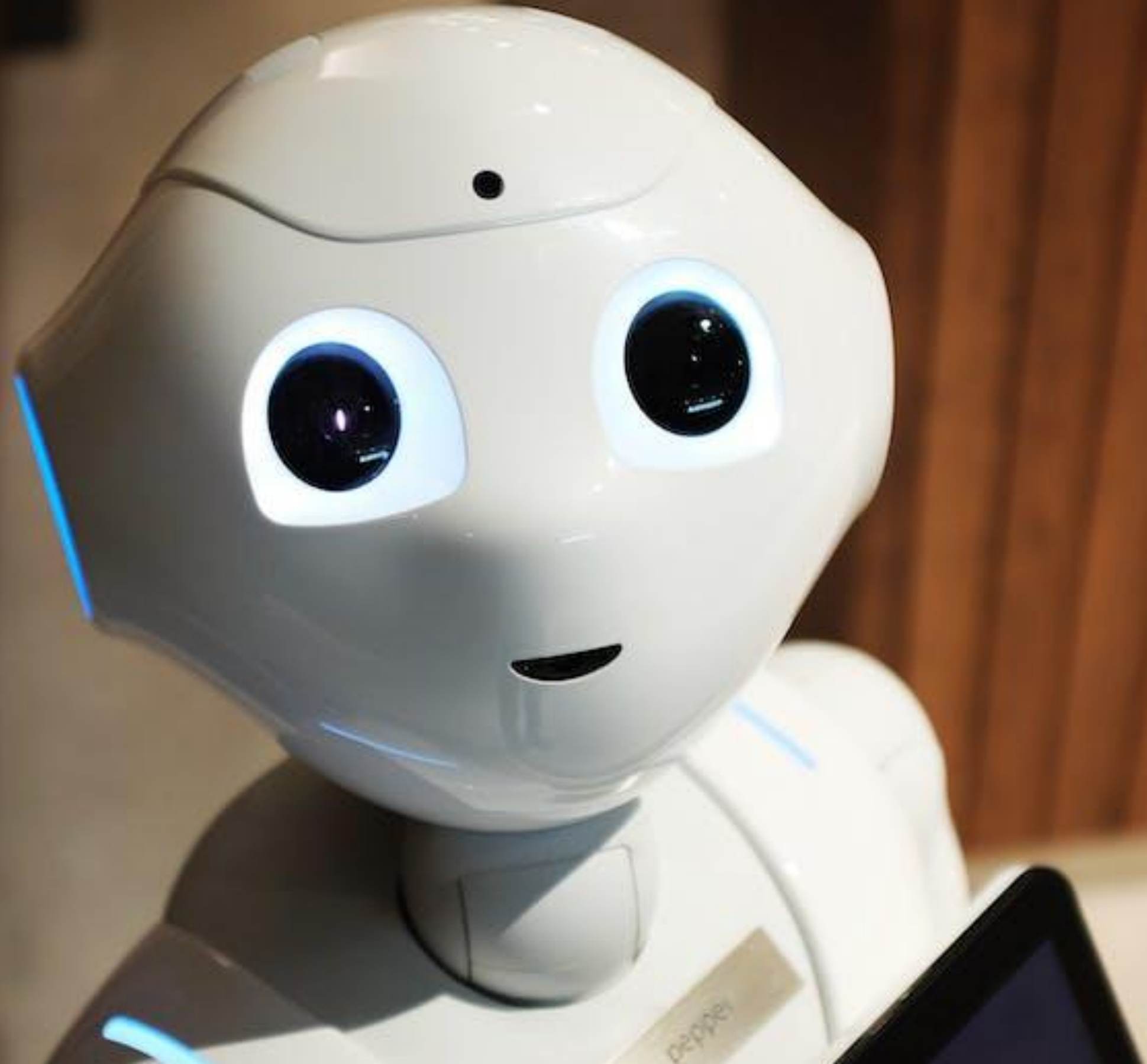
4,3

Trust in CAV technology

in a scale from 1 to 7

Source: www.suaave.eu

Anthropomorphism





Alfred

Anthropomorphism advantages

CAV

4,79

ALFRED

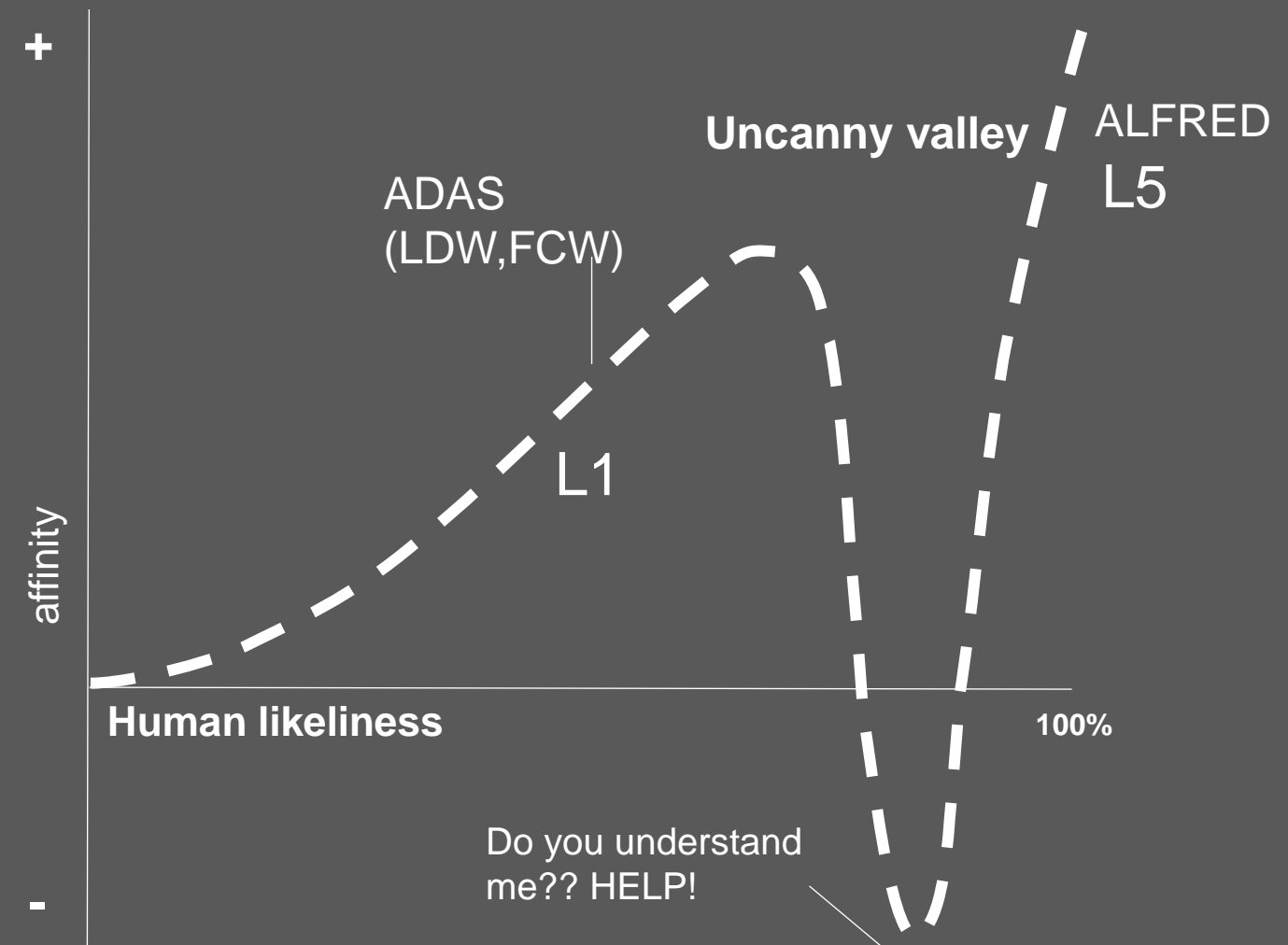
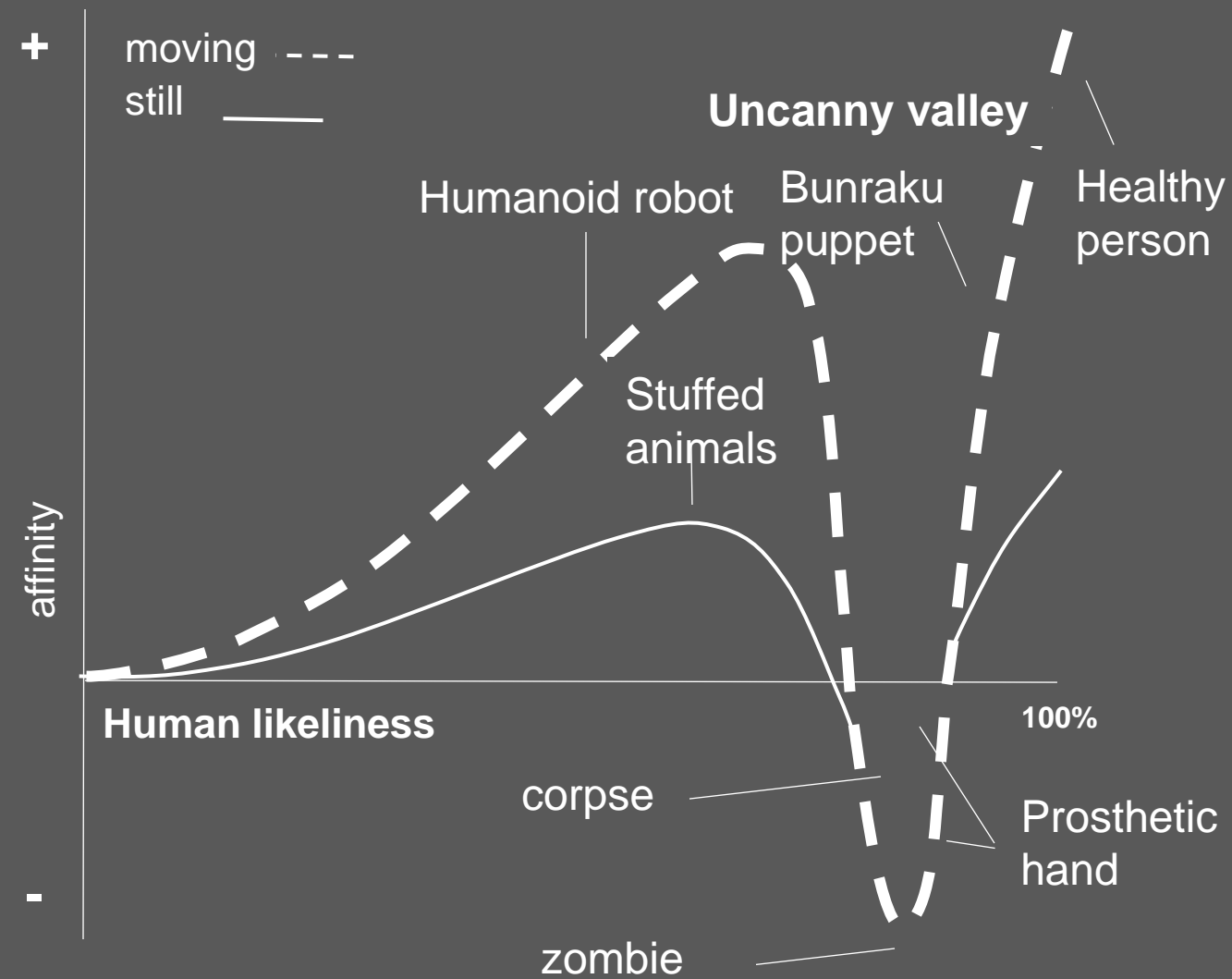
5,38*

Acceptability	5,36	5,79
Perceived safety	4,95	5,14
Perceived control	4,95	5,14
Perceived pleasure	3,03	2,91
Perceived convenience	5,57	5,74

Trust in CAV technology



Uncanny Valley



Bukimi no Tani Genshō (不気味の谷現象)



Pixabay License



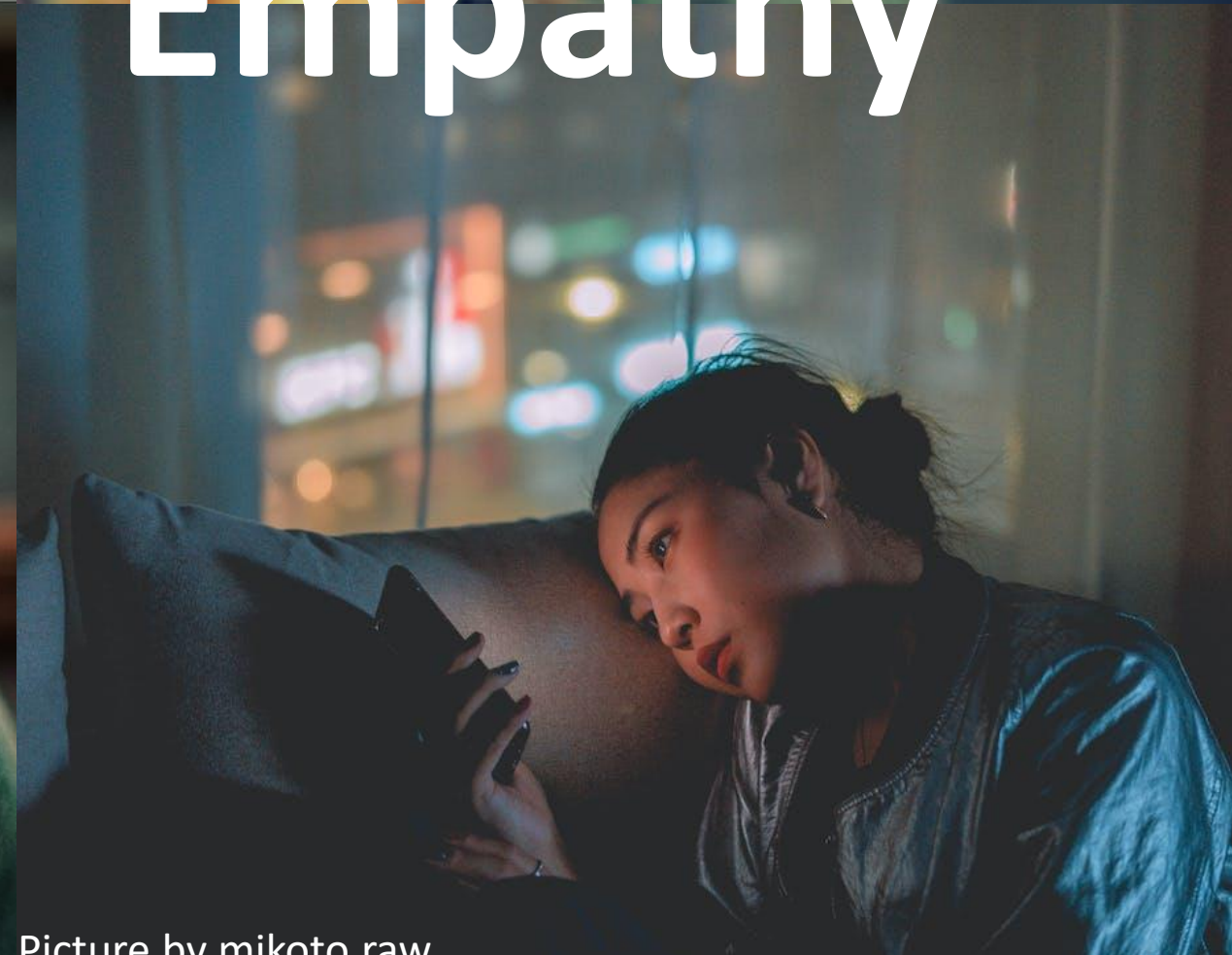
Pixabay License



Picture by Edu Carvalho



Pixabay License



Picture by mikoto raw



Picture by Ron Lach

Empathy

The empathic vehicle

EXTERNAL FACTORS (TRAFFIC, CRASHES, LIGHTS, PEDESTRIANS)

EMPATHIC MODULE

CATEGORICAL MODEL

DIMENSIONAL MODEL

EMOTIONAL STATE

COGNITIVE MODEL

OBSERVER ALGORITHM

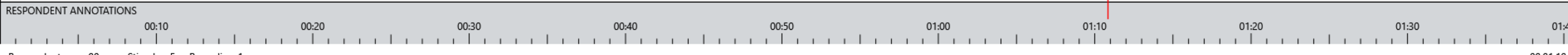
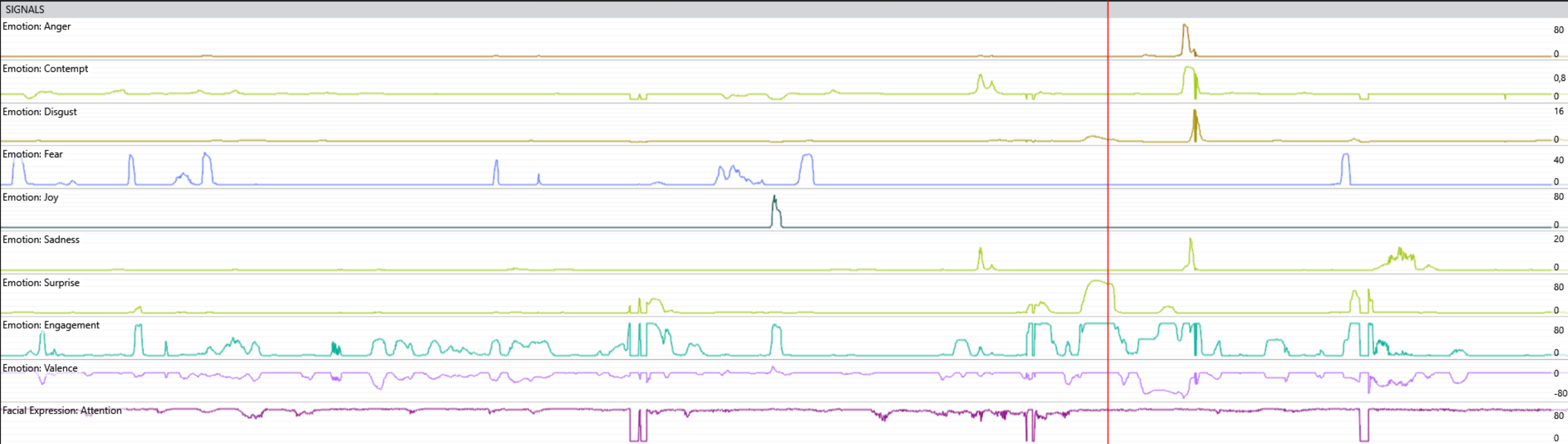
PASSENGER STATE

DRIVER

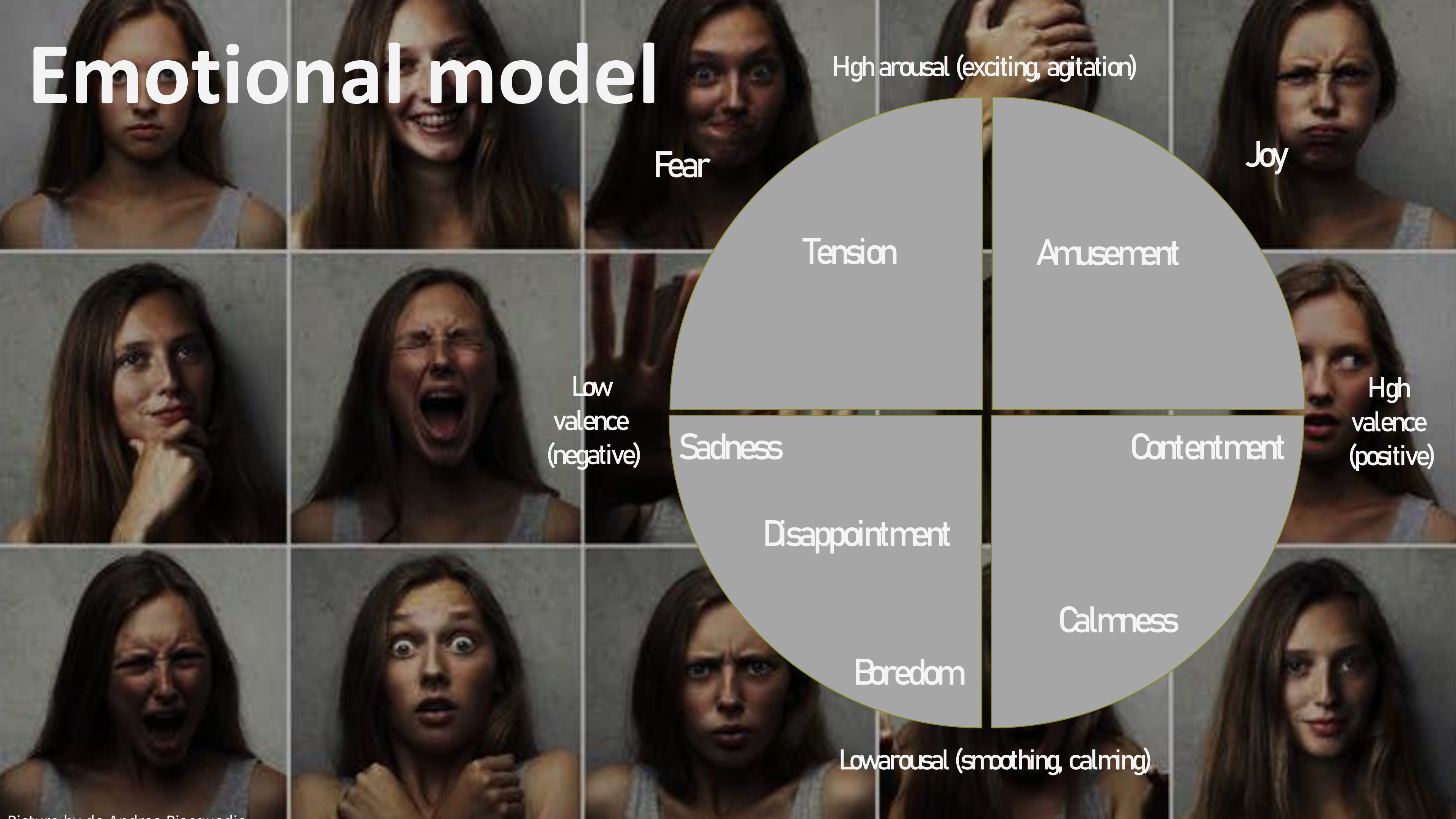


DYNAMICS AND COMFORT

ACE (HUMAN MACHINE INTERFACE)



Emotional model



High arousal (exciting, agitation)

Fear

Joy

Tension

Amusement

Low
valence
(negative)

Sadness

High
valence
(positive)

Contentment

Disappointment

Calmness

Boredom

Low arousal (smoothing, calming)





Picture by Andrea Piacquadio



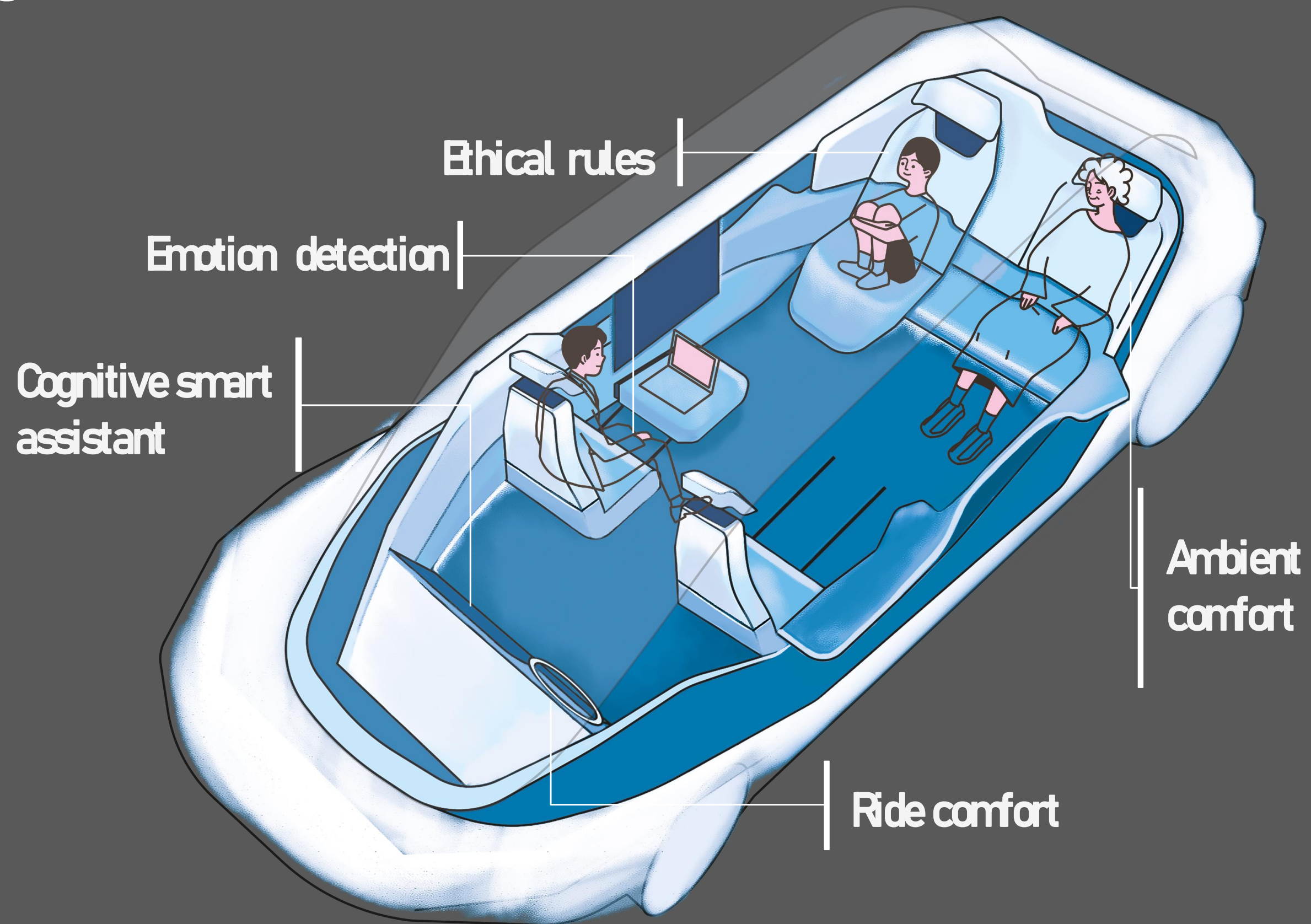
Picture by Vitaly Kushnir





Picture by Andrea Piacquadio

The empathic vehicle



Thank you for your attention!

For questions:

Jose.solaz@ibv.org

Want to know more? www.suave.eu

