

The CoBrACE facilitator

Towards a reduction in the amount of parking available for workers at the workplace



POLIS – 01/12/21 – Gothenburg

François Sabbatini

Bruxelles Environnement

Who is Bruxelles Environnement?

- Created in **1989**, Brussels Environment is responsible for the environment and energy policy in the Brussels-Capital Region.
- Its fields of activity cover the environment in the **broadest sense**, including :
 - **Air quality**
 - **Energy**
 - Soils
 - **Noise pollution**
 - Electromagnetic waves
 - Waste management
 - Sustainable production, construction and consumption
 - Animal welfare
 - Natural areas management
 - Non navigable waterways management
 - **Fight against climate change**

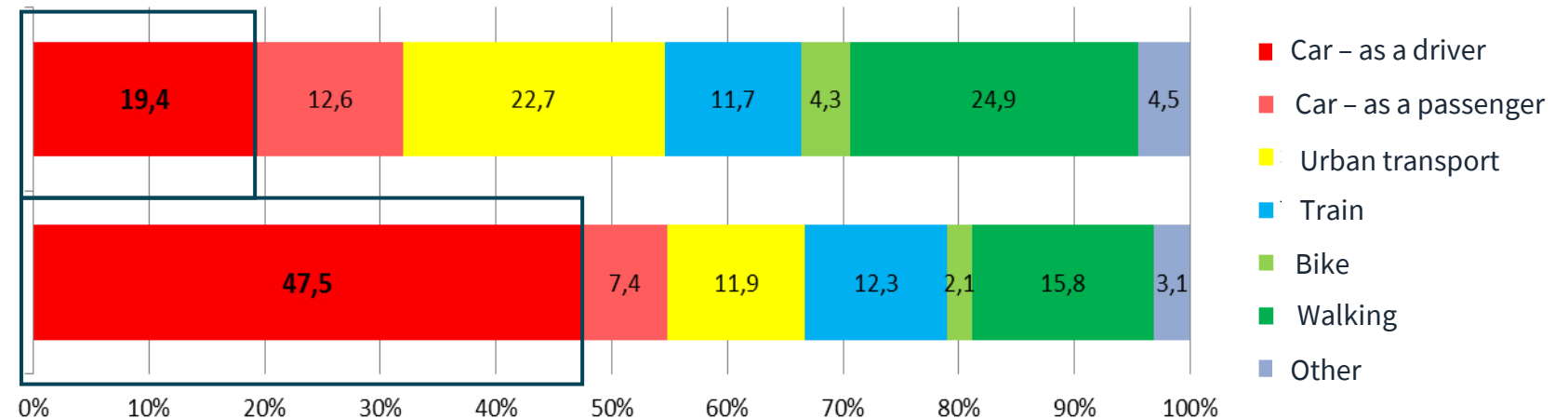
What is CoBrACE ?

COde BRuxellois de l'Air, du Climat et de la maîtrise de l'Energie

A need to take action

No parking spot available at destination.

Parking spot available at destination.



BELDAM, 2010

Aims at regulating the number of parking spots

The number of parking spots allowed depends on :

Floor surface
of the office
building



&

Accessibility
by public
transport

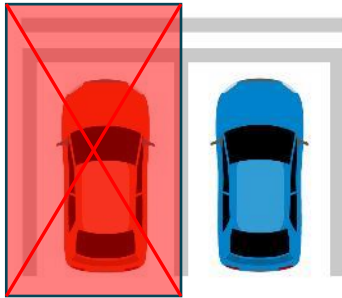


3 zones :

- **A : high accessibility**
- **B : medium accessibility**
- **C : low accessibility**

And if you have/want more?

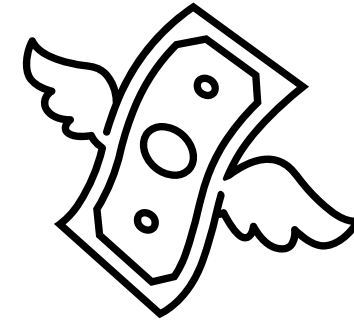
3 options :



Eliminate the spots or change the use (e.g bike parking...)



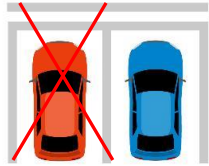
Create a public or a local -resident parking lot, by making the parking spaces available for the public



Maintain the number of spots and pay an environmental fee for each extra spot.

Where are we in 2021?

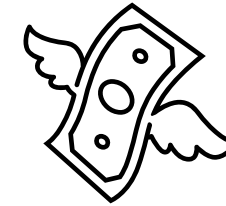
CoBrACE aimed to reduce number of parking spots on the work place
Goal : suppression of 20.000 excess parking spots



More than 3000
parking spots
eliminated



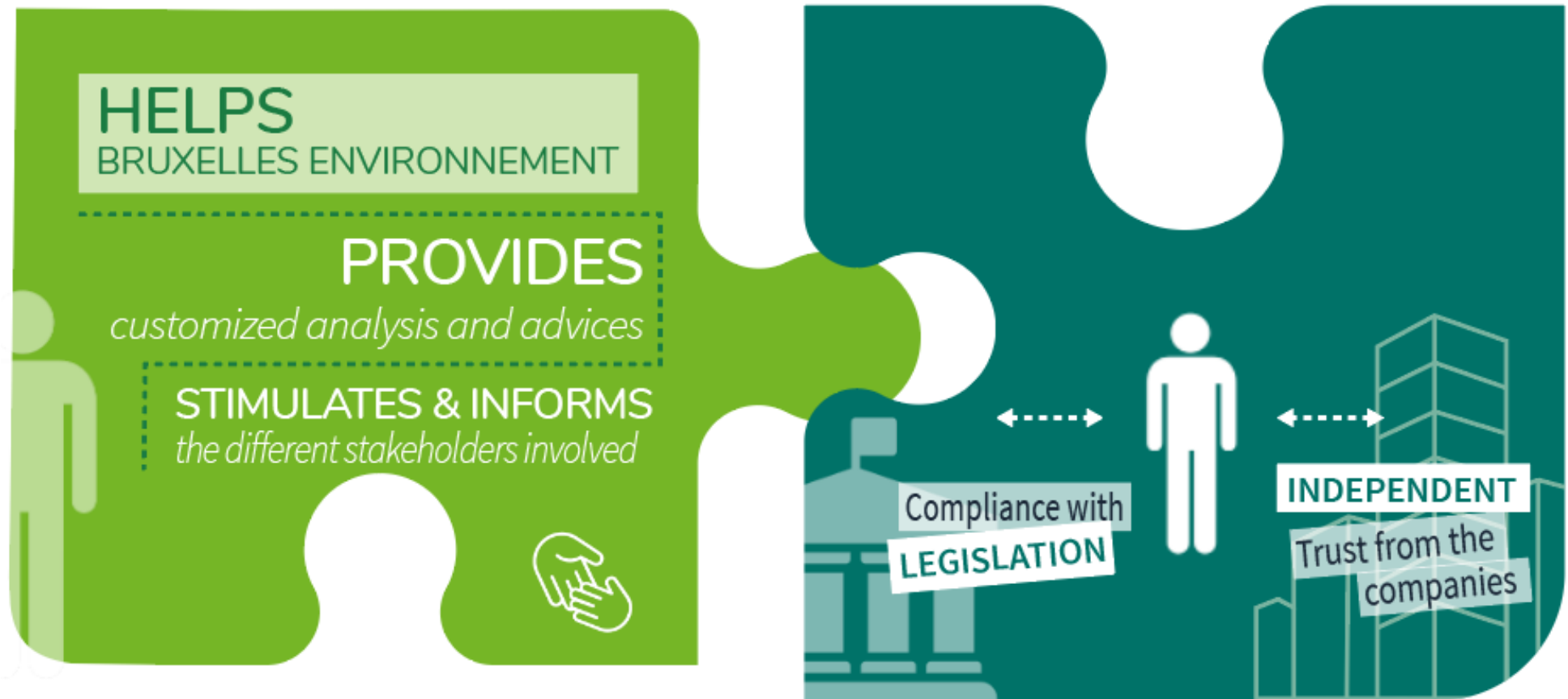
More than 2000
parking spot have
changed of use :
creation of public
parking, resident of
commercial parking



The permit holders
have chosen to pay
the environmental
fee for around 4500
parking spots

Need help? The CoBrACE facilitator is here !

Assistance offered by Bruxelles Environnement



Need help? The CoBrACE facilitator is here !

3 main tasks

2 Pro-active
guidance



1 Guidance



3 Experience
sharing



What has been done in one year ?

13



Companies supported



- ❖ Conversion solutions for parking spaces
- ❖ Details on the criteria for exemptions
- ❖ Information on public parking

366 soon to be removed!

42 questions

In the
HELPDESK



- ❖ How is the fee calculated
- ❖ Calculation of surface areas
- ❖ Activities subject to the rule
- ❖ Accessibility zone
- ❖ Suppression and conversion of spaces
- ❖ Charging stations
- ❖ Public parking
- ❖ ...

What has been done in one year ?



? Research and production of reference documents (creation of thematic files, etc.)



Update of the report

? Adaptation of the report that must be filled out when requesting a waiver



FAQ

? Based on the facilitator's experience and the most frequently asked questions

What has been done in one year ?



Contact with potential partners and stakeholders



Meeting with the concerned services of the local authorities in order to make them aware of the stakes of Cobrace

Thank you !

Contacts :

CoBrACE service : parking@environment.brussels

Facilitator: facilitator.cobrace@bruxelles.environment

Visit our website

<https://environnement.brussels/thematiques/batiment-et-energie/obligations/stationnement-cobrace>

Questions ?