

# Gender Perspectives on Urban Mobility

Women in leadership

MADRID EMT Observatory Women and Safe transport

MADRID EMT Women STEM CHAIR

Julieta de Micheo, Empresa Municipal de Transportes de Madrid

 @UrbanismNextEU #UNextEU 

# EMT Madrid Public Transport Company



- Created in 1947
- 100% owned by Madrid City Council
- 24/7 service
- EMT operates and manages the whole network of public urban buses in Madrid city
- EMT also provides the service of other public mobility services:

Since January 2014, parkings and trucks in Madrid city

Since October 2016, the public bike system BiciMAD

Since January 2018, the cable car system





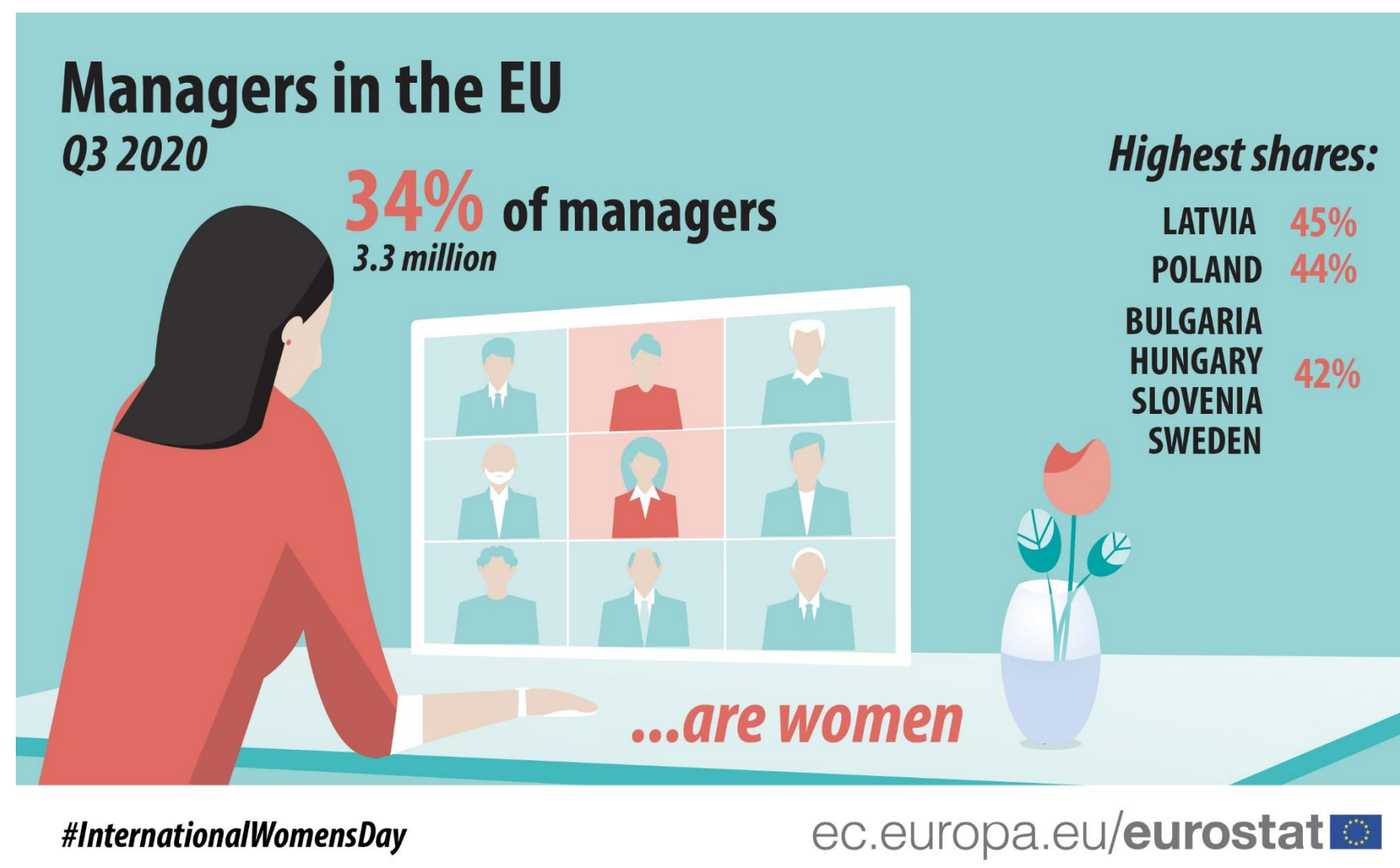
# The Citizen's role

## Users of Public Transport

- Their own space in decision-making
- New information age
- Remake public services



# Women incorporated into positions of responsibility





- Promotion
- Leadership
- Mentoring
- Corporate Policies
- Participation in decision-making
- Monitoring these corporate policies.



**Way for  
women to  
access  
positions of  
responsibility**

**The gender issue is not a feminine issue but everyone's issue.**





# MADRID EMT STEM CHAIR



**Chair STEM for the promotion of women in STEM vocations**

## **Actions:**

- **Research**
- **Vocational guidance**
- **Diffusion**
- **Catalogue of scientific-technological activities**
- **Encourage cultural and social change**





# EMT Observatory "Women and Safe Transport"



Launched: November 25<sup>th</sup> 2020

International Day for the Elimination of  
Violence against Women.

**Double perspective**

- ✓ Women as workers
- ✓ Women as users of Public Transport





# EMT Observatory "Women and Safe Transport"

## ➤ Activities:

1. Best practices.
2. Female employees as new references.
3. Working groups for priorities:
  - Regulatory compliance
  - Safety and security
  - Academic training
  - Wage gap
  - Supporting women
4. - Sharing talent & Workshops
5. - **Reduce the employability gap.**





# EMT Observatory "Women and Safe Transport"



This initiative supports the achievement of:

The 2030 Agenda for Sustainable Development



SDG 11 "make cities more inclusive, safe, resilient and sustainable"



SDG 5 "achieve gender equality and empower all women and girls".



## "Madrid Safe City Project"







# EMT Observatory "Women and Safe Transport"

## Why joining it?

- ✓ No cost or financial commitment
- ✓ Free membership and permanence

We are a community  
supporting women for the effective equality.

**Join us !!**

Foto: Fran Lorente (La vida desde el lago)







[EUROPE.URBANISMNEXT.ORG](http://EUROPE.URBANISMNEXT.ORG)

URBANISM NEXT EUROPE  
**2021** 

# Thank you!

Do you have any question?

Ask Julieta de Micheo, [Julieta.deMicheo@emtmadrid.es](mailto:Julieta.deMicheo@emtmadrid.es)

 [@jmicheo](https://twitter.com/jmicheo)



 [@UrbanismNextEU](https://twitter.com/UrbanismNextEU) [#UNextEU](https://twitter.com/UrbanismNextEU) 