

Playing games to move forward with mobility policies



Carlos F Pardo

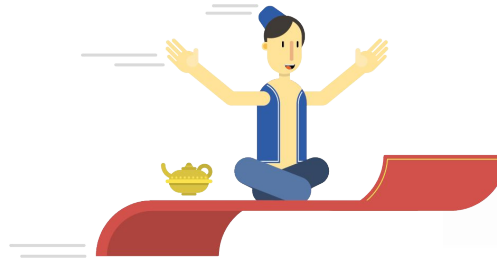
Urbanism Next Europe 2021



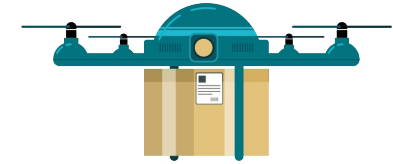
New Urban
Mobility
alliance

Nothing more serious than **transport policy**

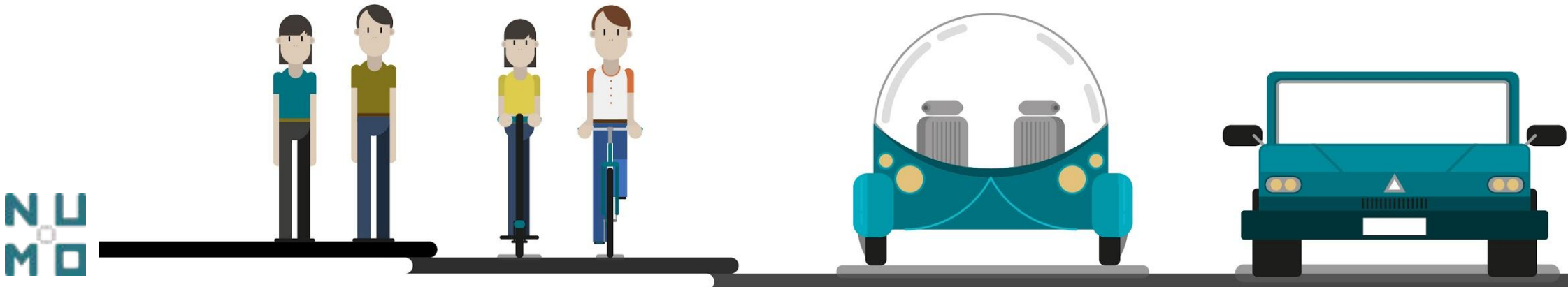
- Lives are at stake



- Great expenditures must be analyzed thoroughly



- Efficiency shall be achieved



Nothing more serious than a game

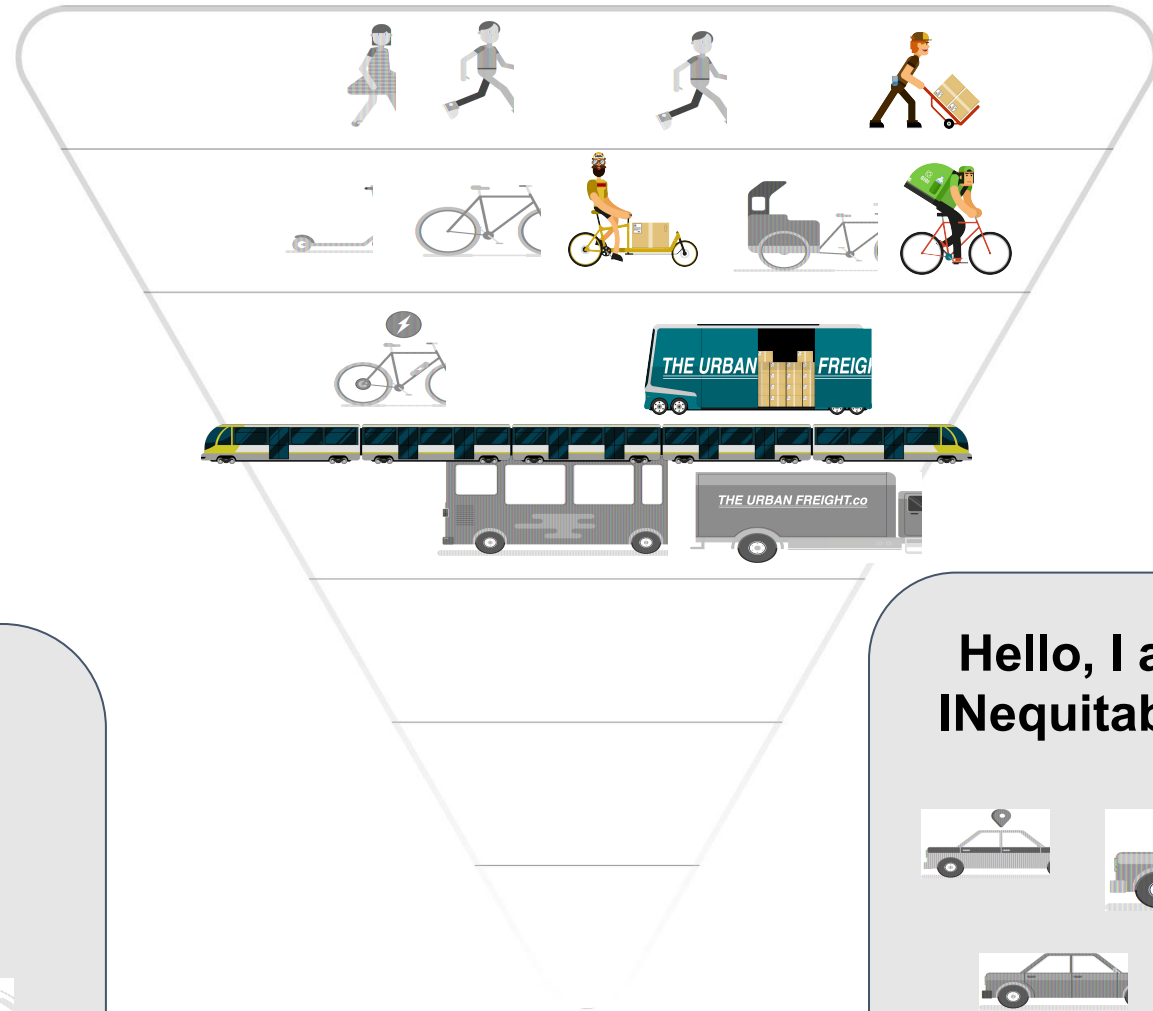
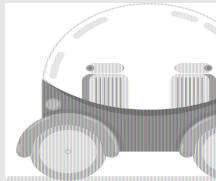
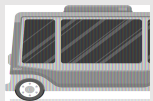
- “proceeds within certain **limits** of time and space
 - in a visible **order**
 - according to **rules** freely accepted
 - outside of the sphere of necessity or material utility.
-
- play mood: rapture and enthusiasm, sacred or festive in accordance with the occasion
-
- Feeling of exaltation and tension accompanies the action, mirth and relaxation follow.”
 -
 - *From Huizinga, 1950. Homo Ludens. p 132.*

Do your own inverted pyramid of mobility

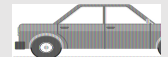
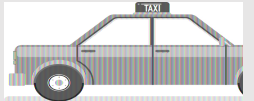
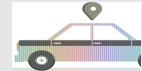
Drag equitable unexpected solutions / modes to
The Equitable Box



Hello, I am the Equitable Box



Hello, I am the
INequitable Box



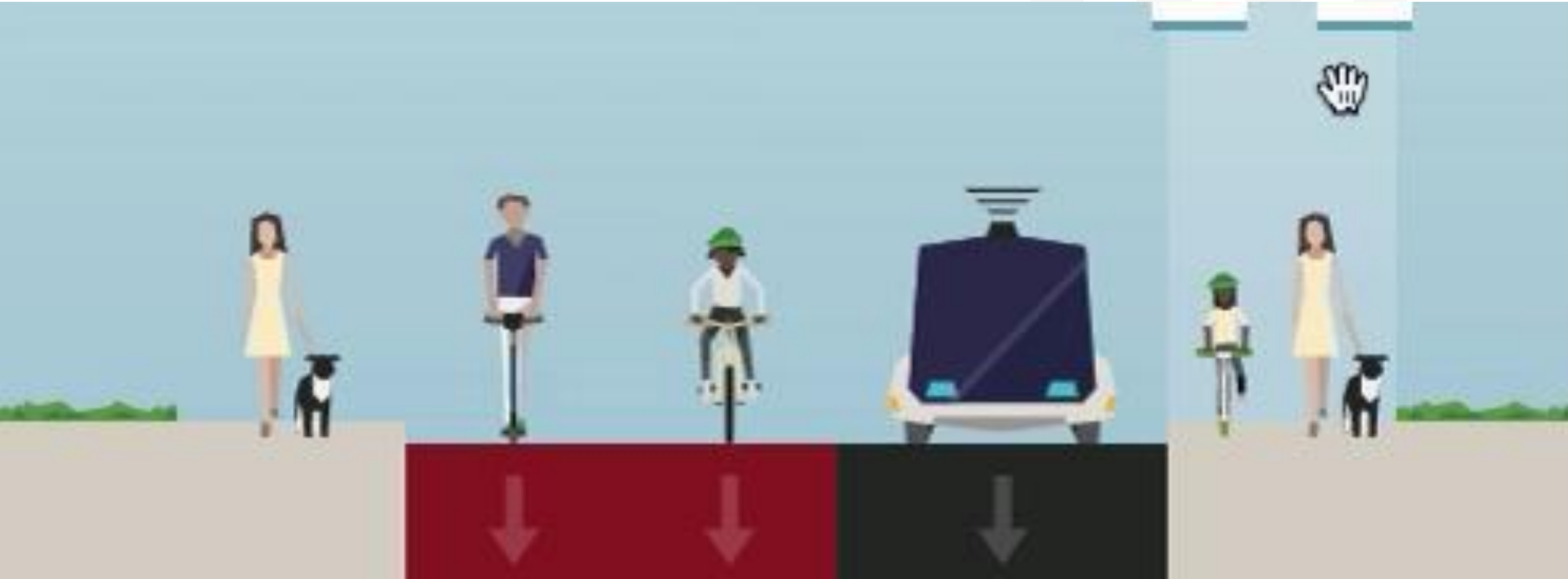
MoMobility card game





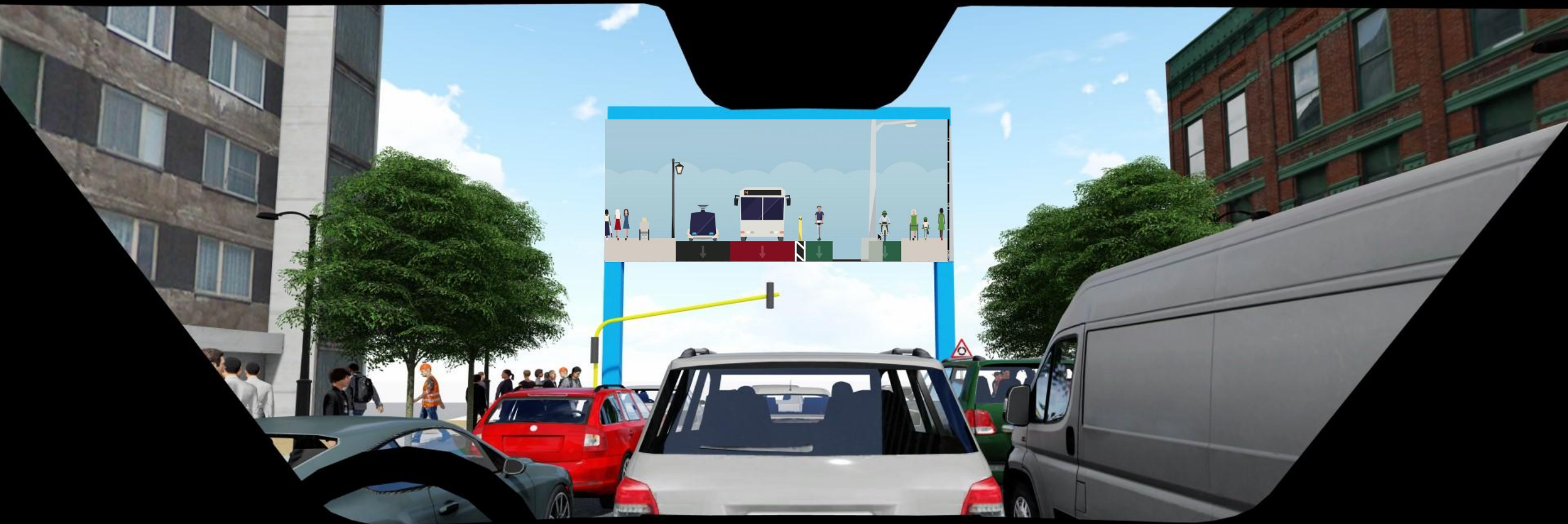
631 people have
played
Momobility in
digital and virtual
version

Redesign streets as games with Streetmix (200k users)



Do your own in www.streetmix.net





Projecting the street on top of a real one

*Test on November 6,
2019 (Bogotá)*



Explode the characteristics of vehicles and assess recommendations

Periodic Table of Mobility

A policy guidance tool by NUMO

This platform helps assess the impact of any vehicle (existing or hypothetical) depending on its attributes. There are pre-loaded values that you can choose to learn the policy implications of existing vehicles. You can add customized characteristics, or create new vehicle types as well. [Learn why this tool exists and how to offer feedback.](#)

Input vehicle attributes

Please choose from the drop-down menu at the bottom or input specific vehicle attributes.

Select pre-loaded vehicle

Vehicle name
(optional)

Bus: Electric

Maximum
capacity

39

Weight

13608

kg

Top speed

105

km/h

Space occupied

31

m²

Emissions

0

CO₂ g/km

ILL-Health

1.67

MET

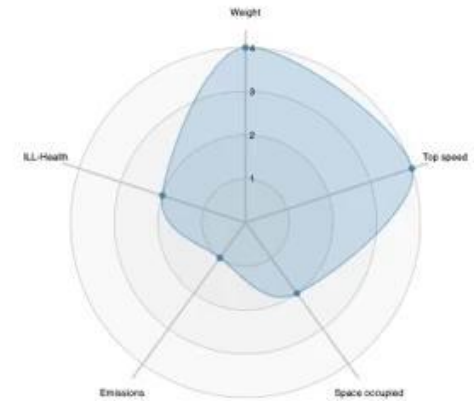


Save profile



This vehicle may be harmful

Policies should be aimed at reducing its overall risk. Consider allocating less space for them, requesting some data from operators, or charging some fees to operate.

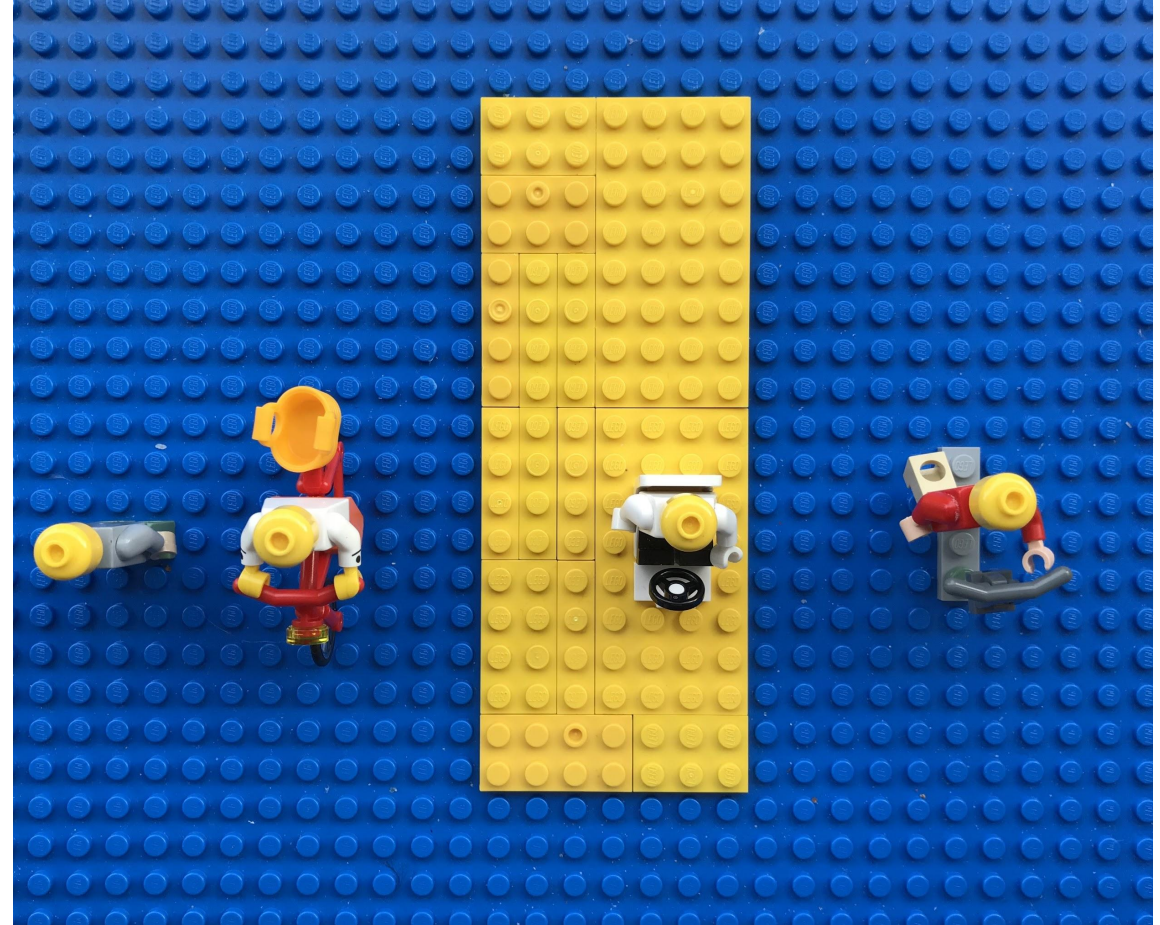


Develop your concept
collaboratively with LEGO



Goals of a LEGO® model

- Generate awareness of transportation-related problems
- Communicate solutions to transportation issues
- Produce and easily present different transportation scenarios



Others are already doing it



Lego Road Safety & Planning
@PlasticPlanners

This reminds me of the major road I crossed earlier - of course it was "full" - full of empty car seats and gaps between the cars!

bike lane = car lanes for people carried (based ~ on Embankment, London)



Get Behind It - The Bike Box 4 Way Intersection

https://www.youtube.com/watch?time_continue=72&v=siixA3FJc1I

PRODUCT IDEA | Jan 25, 2021

BIKE LANES



<https://ideas.lego.com/projects/acdc6e0c-d635-43d4-8292-76510aa54f02>



By MarcelSteeman

10.000
supporters

IN REVIEW

- 302 comments
- Save project
- Share project
- Report project

LEAVE PRIVATE FEEDBACK ?

Originality

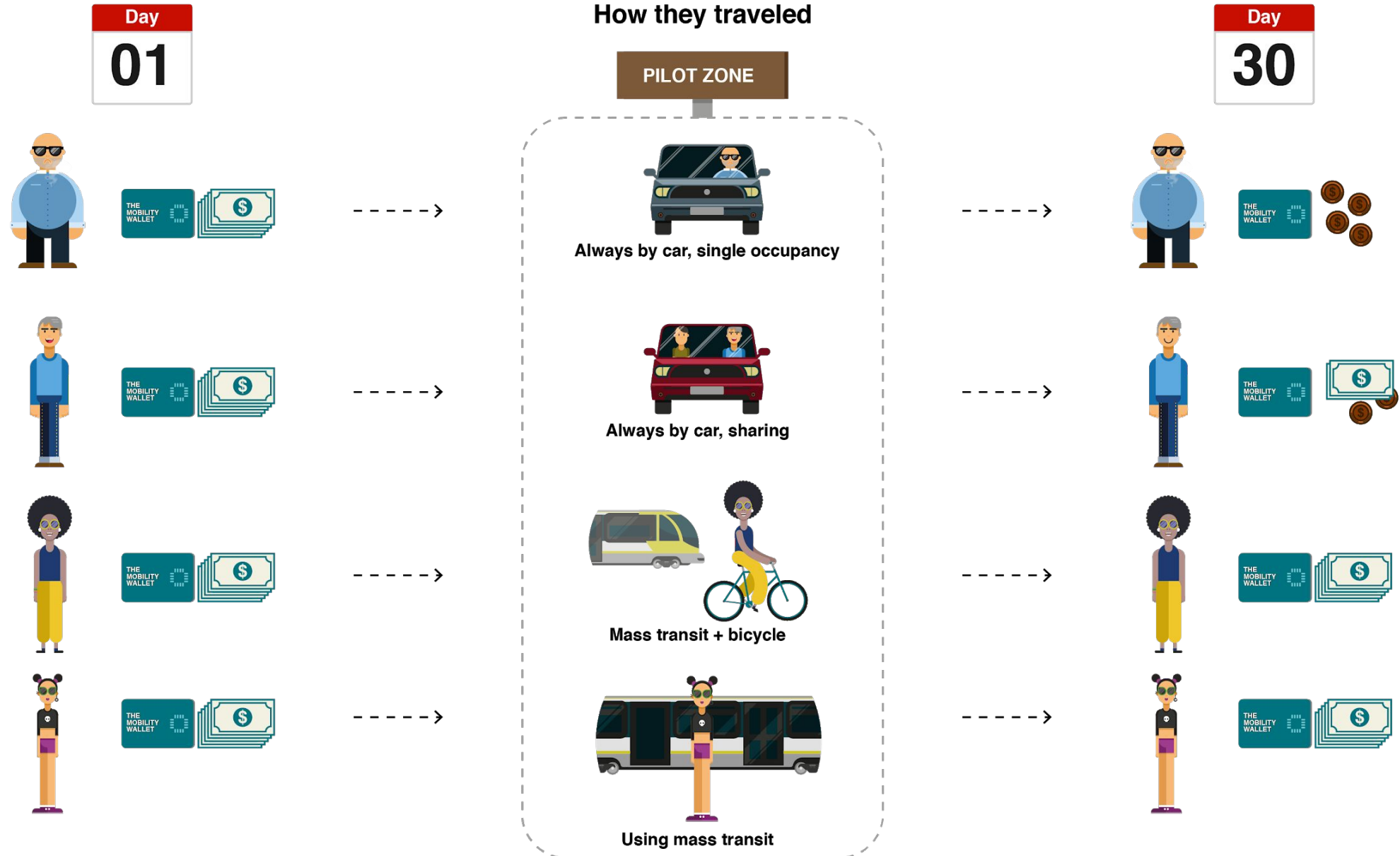


Building Techniques



Details

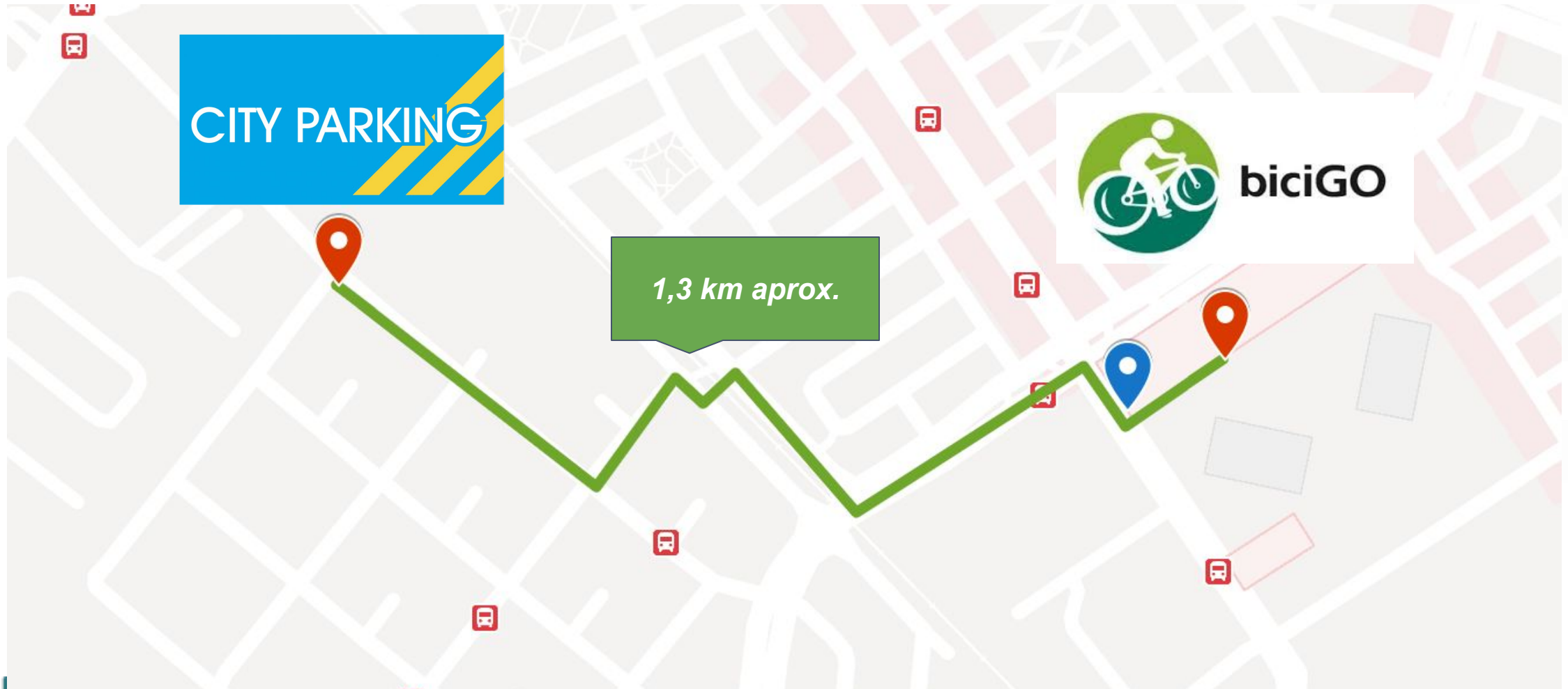
Give people money to NOT spend for a month



Bikes can race a truck - and win?



The ride (a bit less than 1 mile)

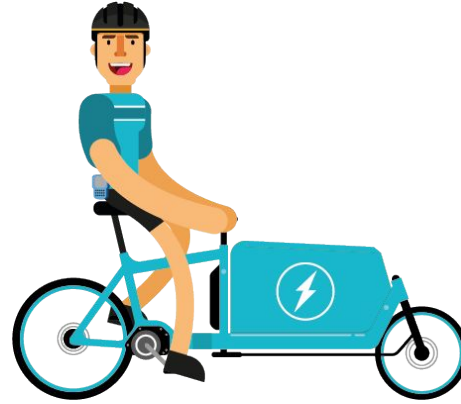


E cargo bike wins!



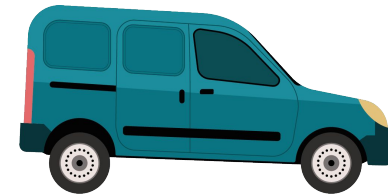
A: cargobike

2
9 minutes



B: e-cargobike

1
7 minutes



C: Camioneta

3
13 minutes

USING **MINECRAFT** FOR COMMUNITY PARTICIPATION

MANUAL



What other games can be played?

Drop us a line at [@carlosfpardo](#) and [@numoalliance](#)