



POLIS Web Conference

Webinar Session 6.c Reallocating space to promote active travel and create better places
2 December 2020

ROME'S APPROACH TO SHARED STREETS: "ISOLE AMBIENTALI"



Enrico Stefàno
Chariman of the Mobility Committee – Rome City Council



Definition of «Isole Ambientali»

The **Urban General Traffic Plan** (P.G.T.U.), approved in 2015, define «Isole Ambientali» such as: «Urban Area whitin mains street» so «into that area we have only local streets»

«**Isole**» in italian means «*islands*». Islands because are sourrounded by mains streets

«**Ambientali**» in italian means «*environmental, green*». Because into the Isole Ambientali the main purpose is to reduce the space for private cars and improve the space for pedestrian, bicycle, increasing the quality of space, the road safety and the street furniture. For a better air quality, reducing noise and pollution.



«Isole Ambientali» what are

To realize Isole Ambientali we put together different measures, with **olistic** approach:

- pedestrianization,
- new street furniture,
- limited traffic zone,
- bike lane,
- bigger sidewalk and safer pedestrian crossing,
- more space for car sharing, public transport and freight delivery.

Why we need «Isole Ambientali»

Road Safety. In Rome we still have several deaths and injuries every year due high speed and the extreme number of private cars. The main purpose is to reduce speed and number of private cars, promoting bicycle and public transport.

Air Quality. In Rome this is a very important problem. Reducing traffic and congestion means better air quality and saving lives.

Social life. Increasing the space for citizen and reducing the space for cars means more opportunity of talking, relaxing, enjoying the public space, childrens' playing.

Economy. More people on the streets means a boost of local shop, more time to observe goods and shops without stress, noise

«Isole Ambientali» a key to valorize history and culture

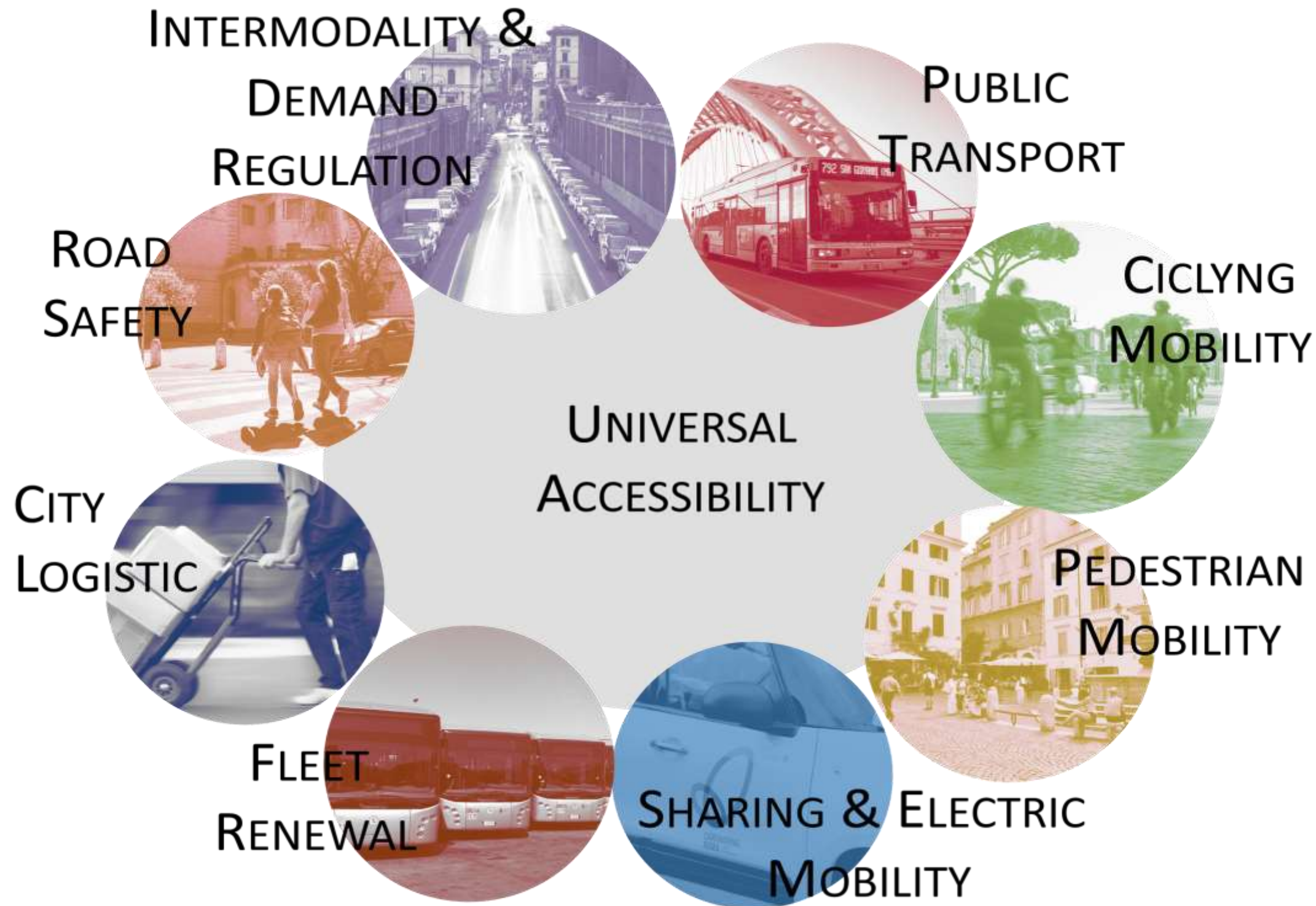
Realizing «Isole Ambientali» it's also a good opportunity to valorize and helping to rediscover the beauty and the most important archeological and cultural site of our city.

For example the «Isola Ambientale» in «Rione Monti» it's very close to Colosseum and Fori Imperiali, in the ancient «Suburra» a neighborhood of the Ancient Rome.

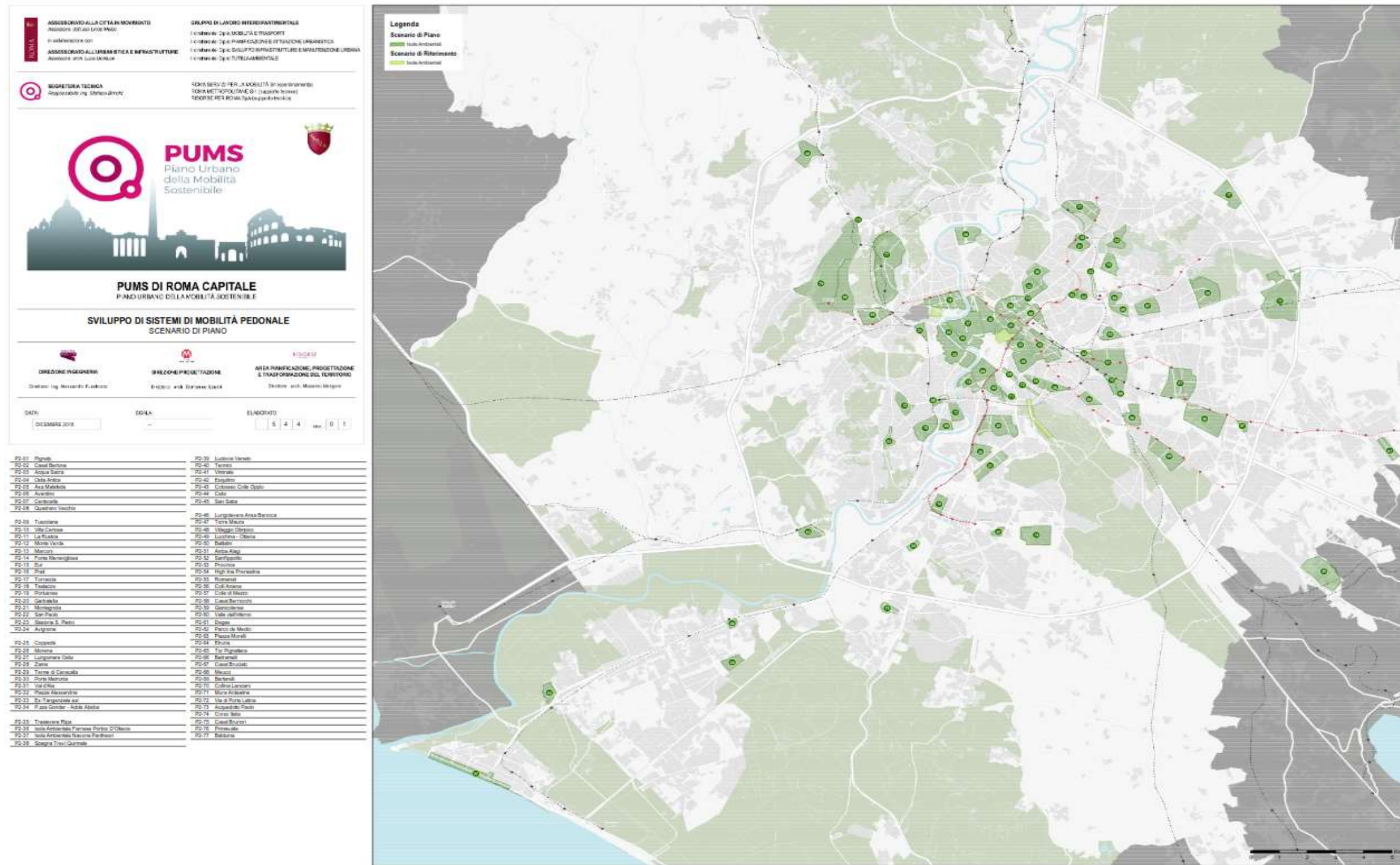
In this way we can encourage citizens to live and enjoy, walking or cycling, the most beautiful site of our city.

The approved SUMP in Rome – 8/2019

DOCUMENTS ON [HTTPS://WWW.PUMSROMA.IT/PARTECIPA/DELIBERE-DI-GIUNTA/](https://www.pumsroma.it/partecipa/delibere-di-giunta/)




«Isole Ambientali» what we planned in the S.U.M.P.




Isole Ambientali some examples

PIANO URBANO DELLA MOBILITÀ SOSTENIBILE


SVILUPPO DI SISTEMI DI MOBILITÀ PEDONALE
SCENARIO DI PIANO



DIREZIONE INGEGNERIA
Direttore: Ing. Alessandro Fuschiotto



DIREZIONE PROGETTAZIONE
Direttore: Arch. Domenico Sandri



**AREA PIANIFICAZIONE, PROGETTAZIONE
E TRASFORMAZIONE DEL TERRITORIO**
Direttore: Arch. Massimo Mengoni

DATA: SCALA: ELABORATO: rev.

P2-01 Pigneto	P2-39 Ludovico Veneto
P2-02 Casal Bertone	P2-40 Termini
P2-03 Acqua Sacra	P2-41 Viminale
P2-04 Ostia Antica	P2-42 Esquilino
P2-05 Axa Malfede	P2-43 Colosseo Colle Oppio
P2-06 Aventino	P2-44 Celio
P2-07 Centocelle	P2-45 San Saba
P2-08 Quadraro Vecchio	
P2-09 Tuscolana	P2-46 Lungotevere Ansa Barocca
P2-10 Villa Ceriosa	P2-47 Torre Maura
P2-11 La Rustica	P2-48 Villaggio Olimpico
P2-12 Monte Verde	P2-49 Lucchina - Ottavia
P2-13 Marconi	P2-50 Battistini
P2-14 Fonte Meravigliosa	P2-51 Arba Alagi
P2-15 Eur	P2-52 Sant'ippolito
P2-16 Prati	P2-53 Province
P2-17 Torracca	P2-54 High line Prenestina
P2-18 Testaccio	P2-55 Romanisti
P2-19 Portuense	P2-56 Colli Aniene
P2-20 Garbatella	P2-57 Colle di Mezzo
P2-21 Montagnola	P2-58 Casal Bernocchi
P2-22 San Paolo	P2-59 Gianicolense
P2-23 Stazione S. Pietro	P2-60 Valle dell'Inferno
P2-24 Avignone	P2-61 Degas
P2-25 Coppede	P2-62 Parco de Medici
P2-26 Morena	P2-63 Piazza Morelli
P2-27 Lungomare Ostia	P2-64 Etruria
P2-28 Zama	P2-65 Tor Pignattara
P2-29 Terme di Caracalla	P2-66 Beltramelli
P2-30 Porta Metronia	P2-67 Casal Bruciato
P2-31 Val d'Ala	P2-68 Meucci
P2-32 Piazza Alessandria	P2-69 Bertarelli
P2-33 Ex-Tangenziale est	P2-70 Collina Landiani
P2-34 P.zza Gondar - Addis Abeba	P2-71 Mura Ardeatine
P2-35 Trastevere Ripa	P2-72 Via di Porta Latina
P2-36 Isola Ambientale Farnese Portico D'Ottavia	P2-73 Acquedotto Paolo
P2-37 Isola Ambientale Navona Pantheon	P2-74 Corso Italia
P2-38 Spagna Trevi Quirinale	P2-75 Casal Brunori
	P2-76 Primavera
	P2-77 Balduina

Rione Monti (before)



Rione Monti (after)



Casal Bertone (before)



Casal Bertone (after)



Casal Bertone II (before)



piazza S. Maria Consolatrice - attuale

Isola Ambientale di "Casal Bertone"

Casal Bertone II (after)



Quadraro Vecchio before



Quadraro Vecchio after



Quadraro Vecchio II (before)



Quadraro Vecchio II (after)



Conclusions

- A new way to live the urban space and **interact** with others citizens
- **Less** cars and reduced speed
- Less pollution, noise, more **safety** for pedestrian
- More **opportunity** for shops and stores
- More **social life** and space quality



POLIS Web Conference

Webinar Session on ...
.. December 2020

Thank you for your attention!

Enrico Stefàno
Chairman of the Mobility Committee – Rome City Council



enrico.stefano@comune.roma.it

<https://twitter.com/EnricoStefano>

<https://www.linkedin.com/in/enricostefano87/>

