



LISETTE HOEKE



# DUTCH CYCLE HIGHWAY WAYFINDING STANDARD

POLIS WEBINAR  
THURSDAY 17<sup>th</sup> December



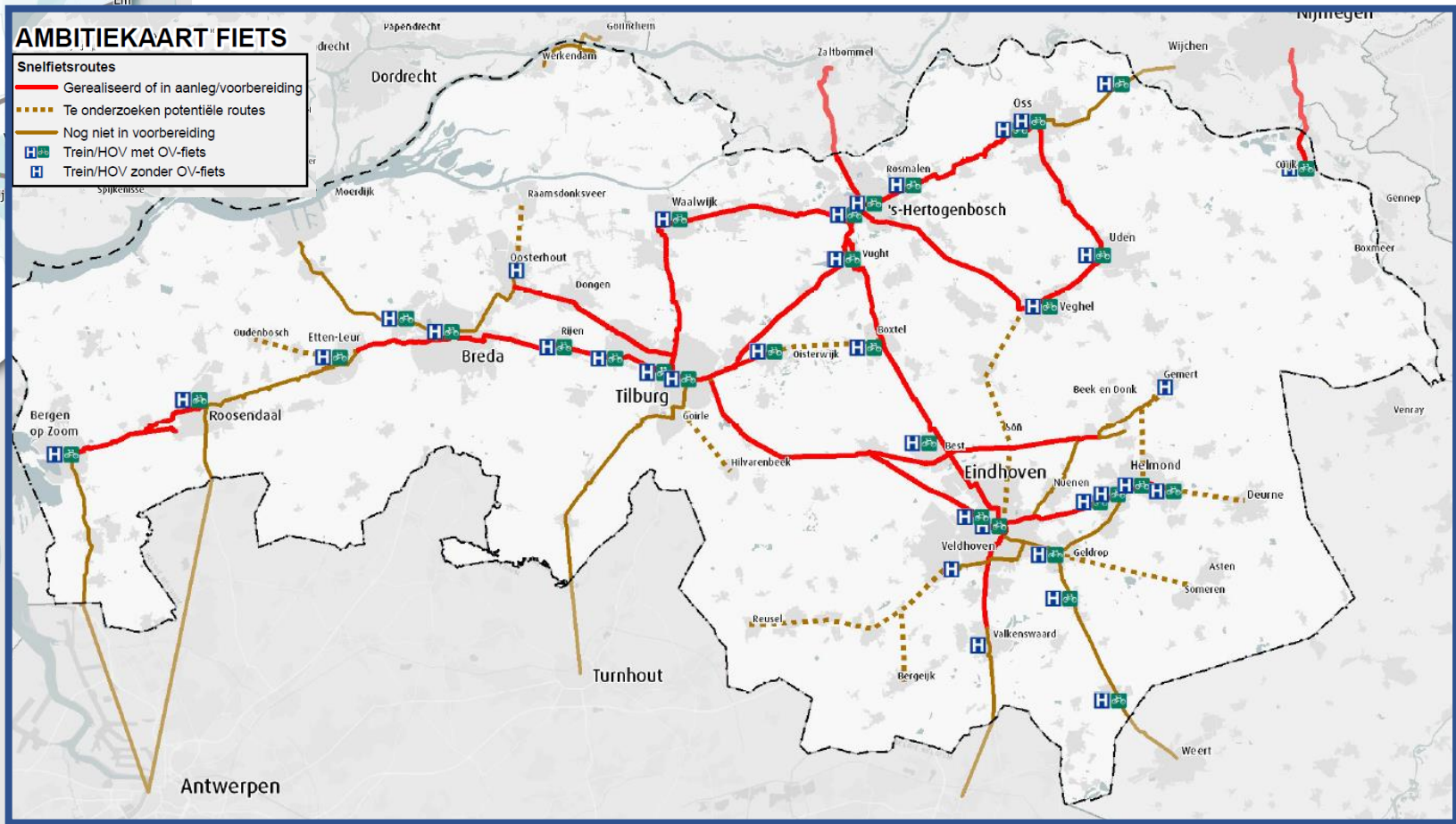
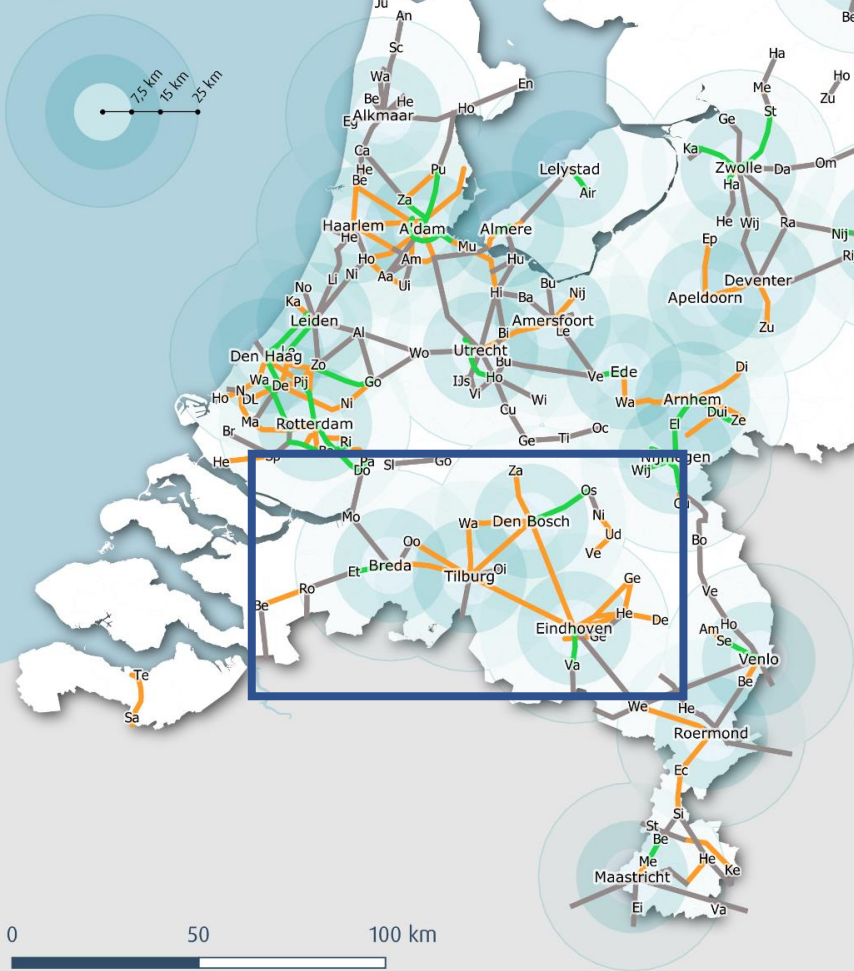




## Legenda

- Bestaande routes
- Realisatie
- Ambitie / Planvorming

## Daily Urban System





← Kaatsheuvel 2  
Efteling 2

← Waalwijk 7

← Loonse en  
Drunense Duinen

Loon op Zand 1  
Tilburg 9 →

3687  
029





BAS



F261

Tilburg - Waalwijk







# Research building blocks



Wayfinding  
Tilburg



VR study



Cycle Highway  
Academy



Online survey



Cycle along



Polls



Exploratory  
Cycle behaviour  
Cases



Intercept  
Survey

A background image showing a tree-lined street. Two people are riding e-bikes away from the camera on a paved path. The path is bordered by a yellow line on the right. There are large trees on both sides of the path, and a black metal fence is visible on the right. The scene is outdoors during the day.

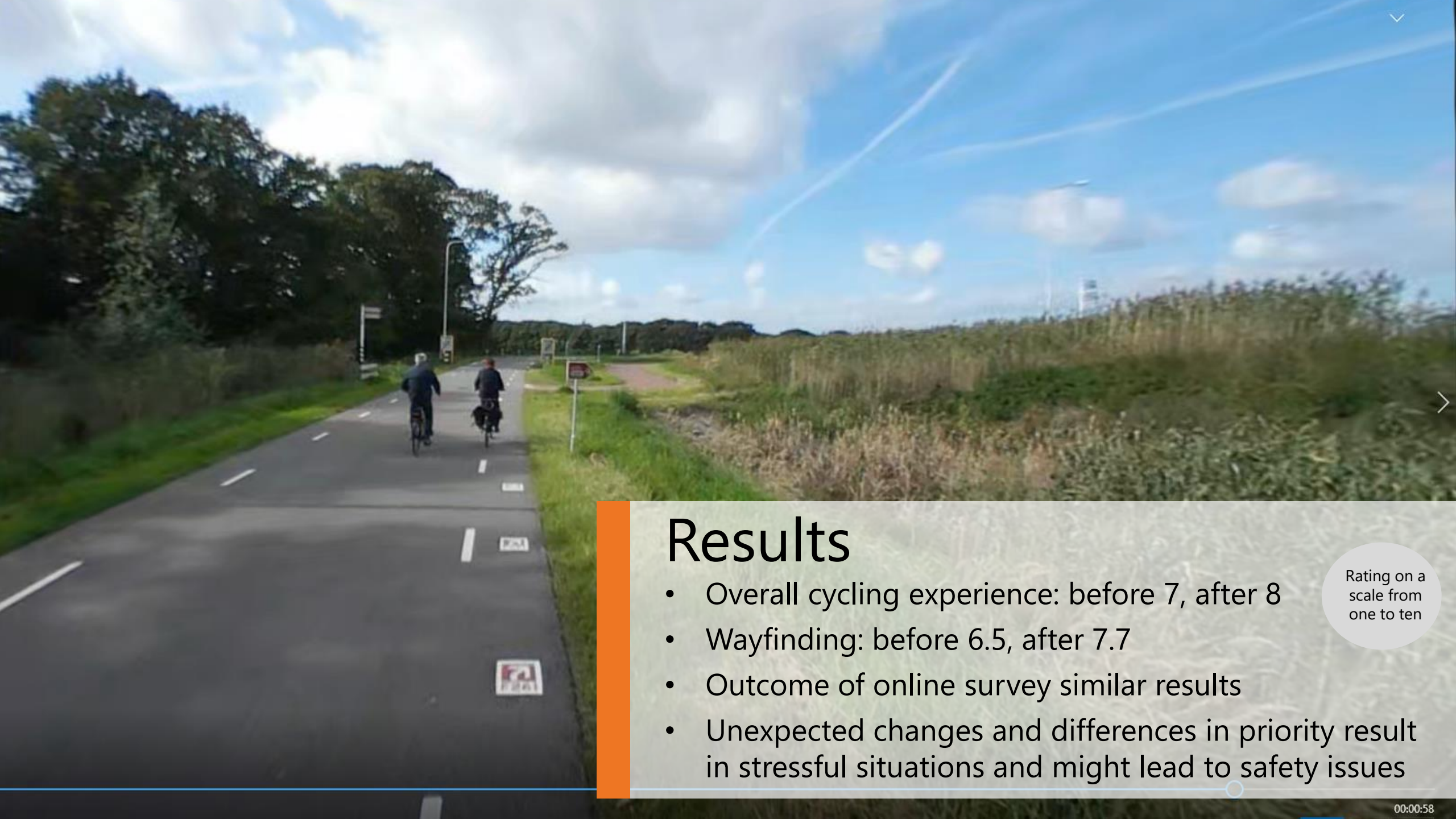
# Tilburg-Waalwijk (NL) case

- Test new wayfinding concepts
- Participants: 12
- Type of bike: e-bike
- Cycle track: 18 km cycle highway
- Before and after implementing new wayfinding









# Results

- Overall cycling experience: before 7, after 8
- Wayfinding: before 6.5, after 7.7
- Outcome of online survey similar results
- Unexpected changes and differences in priority result in stressful situations and might lead to safety issues

Rating on a  
scale from  
one to ten













# New wayfinding for CH

- Advance notice sign (before crossing/situation)
- Route continuation sign (after crossing/situation)
- Use of color-box for cycle highway number
- Use of F-numbers
- Enlargement of white textbox



Picture made by Witteveen + Bos







- January 2021: official announcement new wayfinding for cycle highways
- More about the research? van Lierop, D., Soemers, J., Hoeke, L., Liu, G., Chen, Z., Ettema, D., & Kruijf, J. (2020). [Wayfinding for cycle highways: Assessing e-bike users' experiences with wayfinding along a cycle highway in the Netherlands](#) *Journal of Transport Geography*, 88.





December 2020 | Polis Webinar

Lisette Hoeke  
Hoeke.L@buas.nl



Picture made by Witteveen+Bos