

# POLIS

CITIES AND REGIONS FOR TRANSPORT INNOVATION

regio arnhem  
nijmegen

Mobility management during major construction works  
Matthias Van Wijnendaele *beliris.brussels*

# Annual Conference 2020

VIRTUAL EVENT | 30 NOVEMBER-3 DECEMBER 2020

A thick yellow line starts with a white dot on the left, extends horizontally across the top, then curves downwards and to the right, ending with a yellow dot. The line has a smooth, rounded appearance.

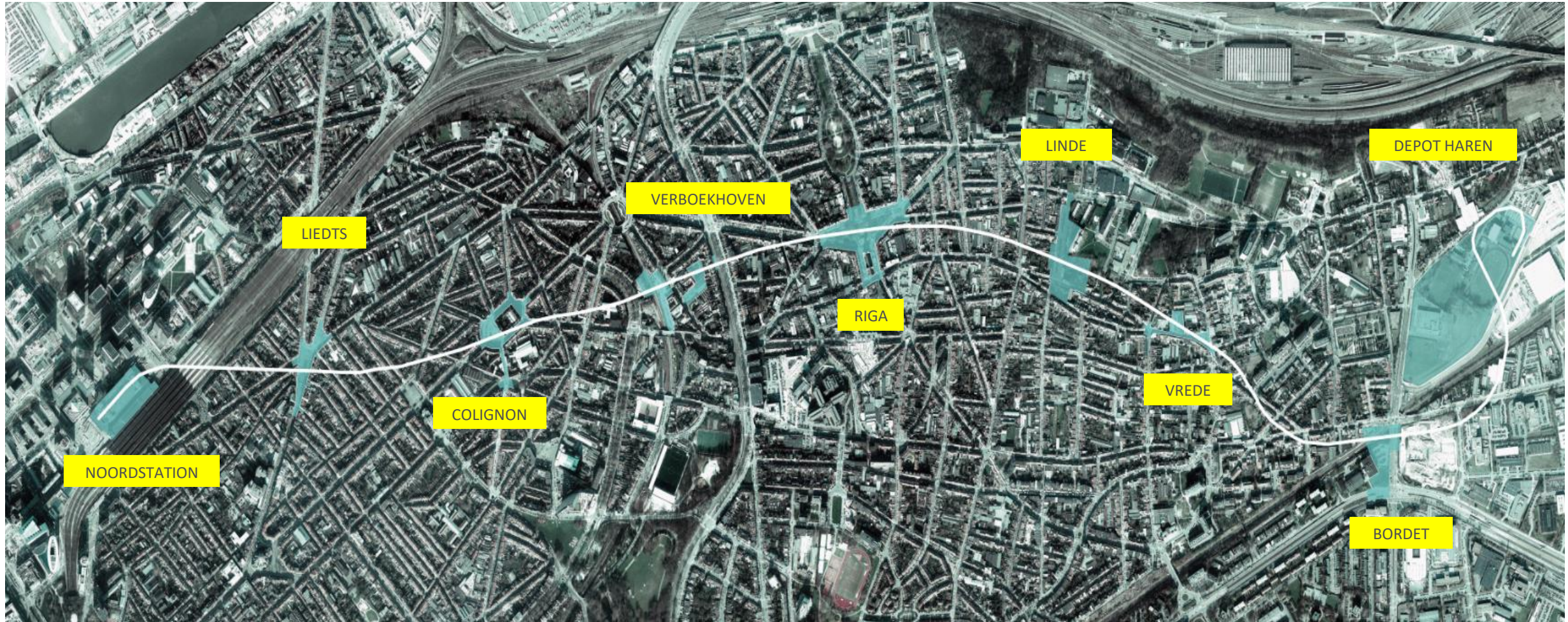
# Mobility management during major construction works *Metro 3 Brussels*

November 2020





# 5 km tunnel and 7 new metro stations & public spaces

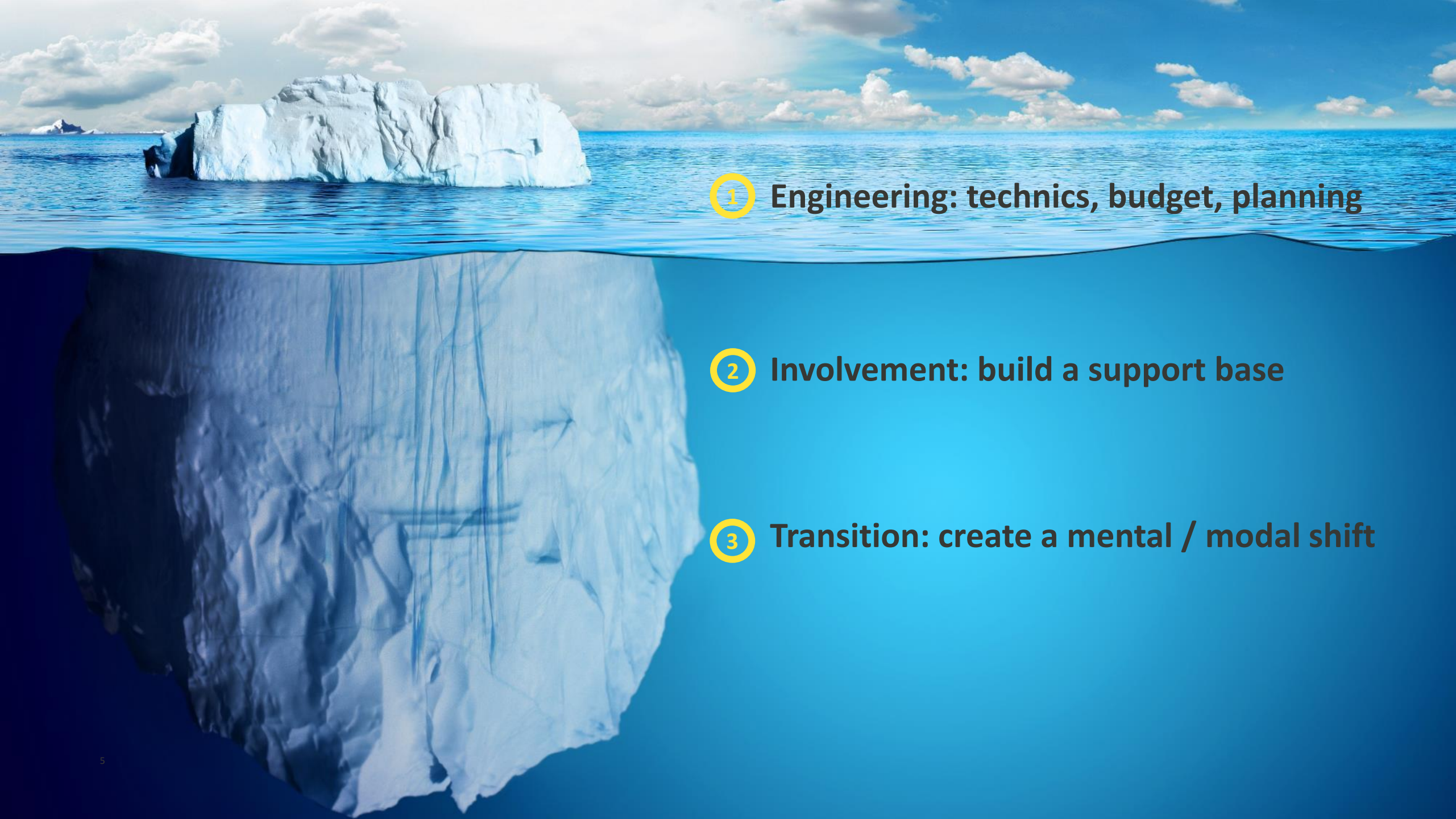




# 5 km tunnel and 7 new metro stations & public spaces







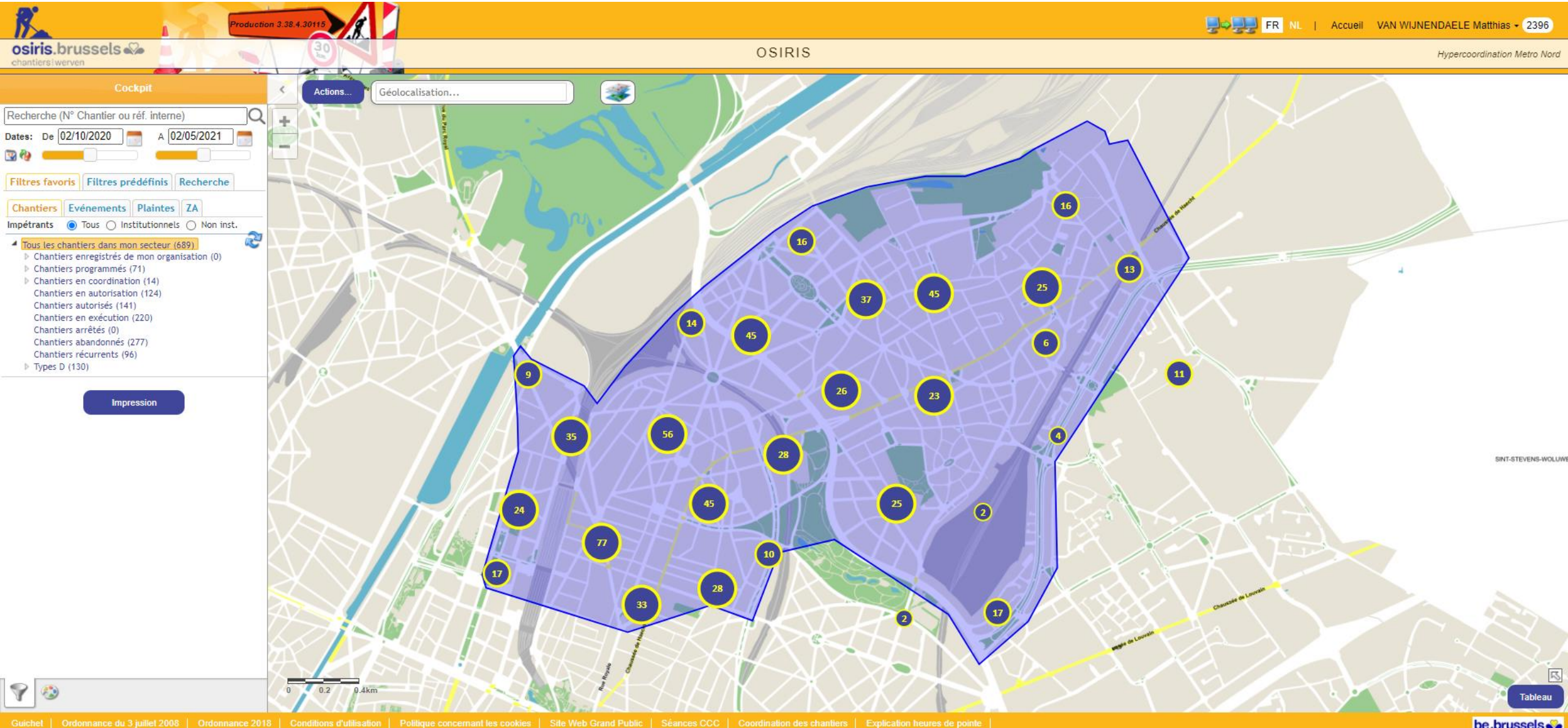
① **Engineering: technics, budget, planning**

② **Involvement: build a support base**

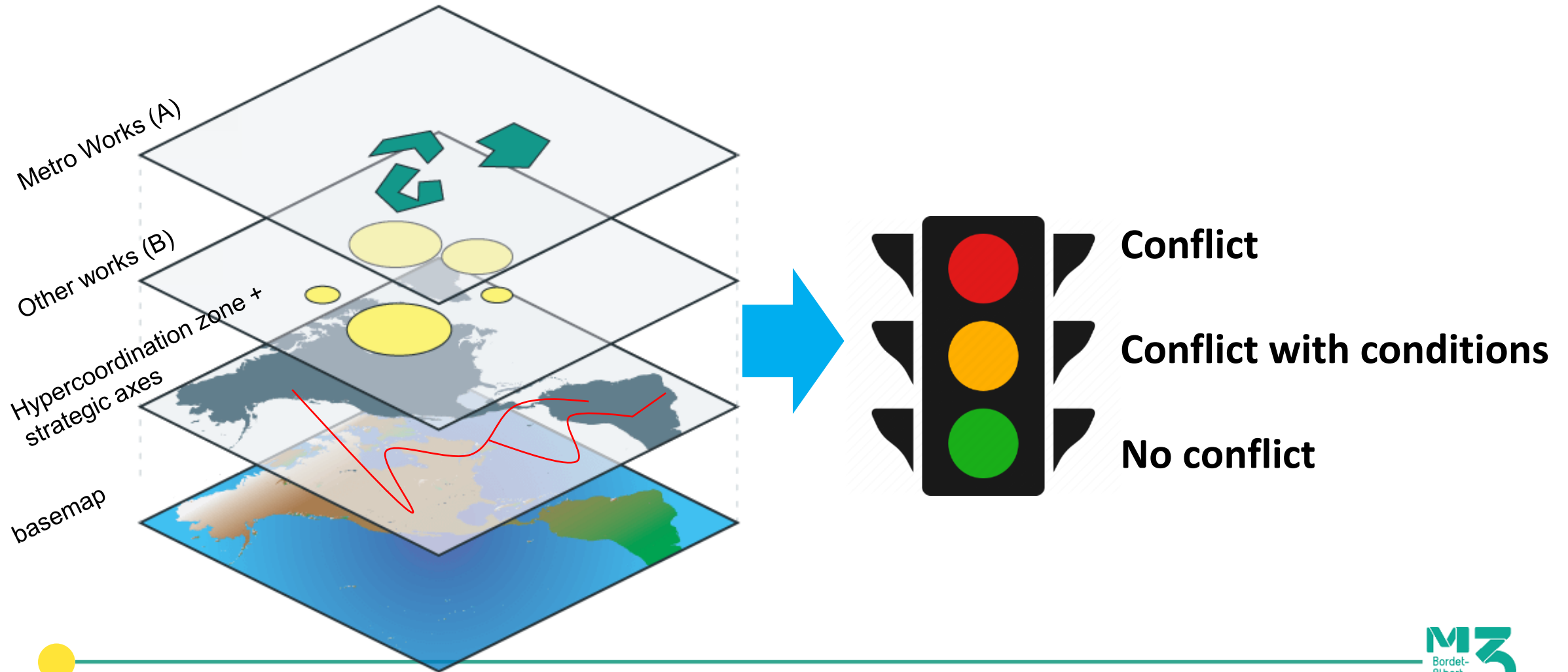
③ **Transition: create a mental / modal shift**



# Traffic management : planning metro works



# Traffic management : planning metro works





# Traffic management : planning metro works

The screenshot displays a traffic management application interface. On the left, a 'Layers' panel lists various data sources with checkboxes:

- ☐ Bewegwijzing
- ☒ Bruggen
- ☒ DRIP's [BETA]
- ☒ Google Traffic
- ☒ Hectometerpalen
- ☒ Matrixborden [BETA]
- ☒ P2000
- ☒ Reistijd [BETA]
- ☐ Telpunten [BETA]
- ☒ Waze afsluitingen [BETA]
- ☐ Waze files [BETA]
- ☒ Waze meldingen
- ☐ Waze onregelmatigheden [BETA]
- ☒ Wegstatus
- ☒ Werkzaamheden

The main map area shows a street network in Rotterdam with various traffic signs and labels. A pop-up window for 'Onderhoudswerkzaamheden Gemeente Rotterdam - Van der Duijn van Maasdamweg' provides details about road works, including the date and time (29-10-2020 03:25:05 uur) and a URL for more information.

On the right side, a list of alerts is displayed, including 'Gevaar, Dieren op de weg' and 'Gevaar, Gat in de weg'. Below these, several 'Afsluiting, Afsluiting - evenement' alerts are shown, detailing road closures for events in Rotterdam, such as 'Buys Ballotaan, Rotterdam' and 'Van der Duijn van Maasdamweg, Rotterdam', with dates and times.



# Traffic management in the past

Car orientation

Manual counting & simulation studies

Information collection from multiple actors

Decision by a closed group of experts





# Traffic management in the past

Car orientation

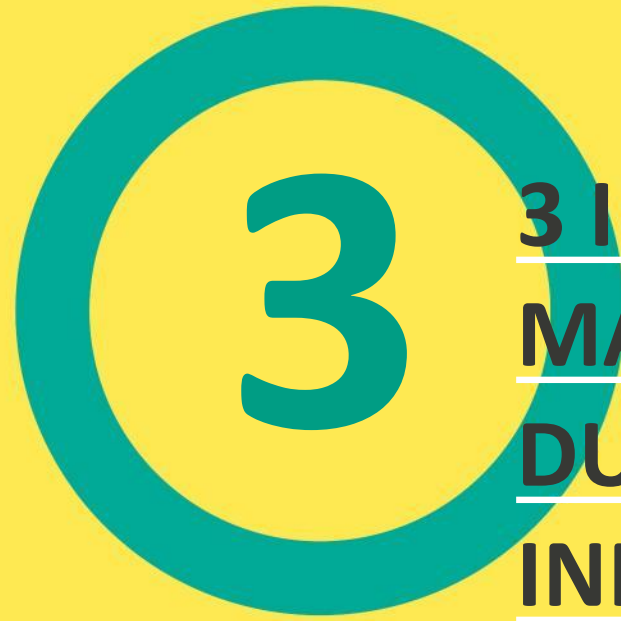
Manual counting & simulation studies

Information collection from multiple actors

Decision by a closed group of experts







# **3 INNOVATIONS IN TRAFFIC MANAGEMENT DURING MAJOR INFRASTRUCTURE WORKS**





# Change 1 : goodmove.brussels

## A SUMP for 2030 (approved 2020)

less main roads or connectors

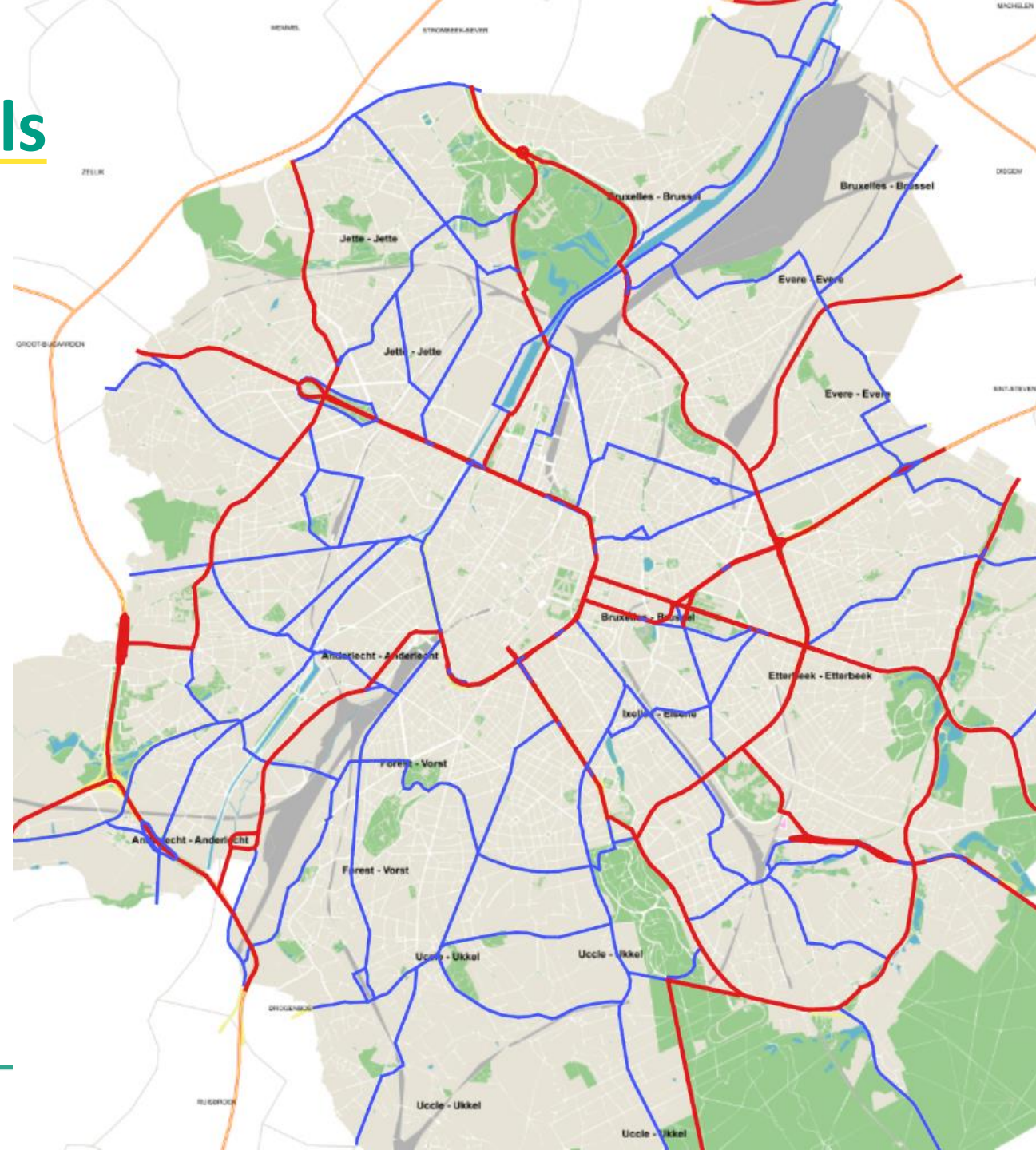
more places to ☕

less 🚌

more 🚊 & 🚲 lanes

mobility for all

*data.mobility.brussels/mobigis and compare Iris 2 ⇔ SMV Auto*

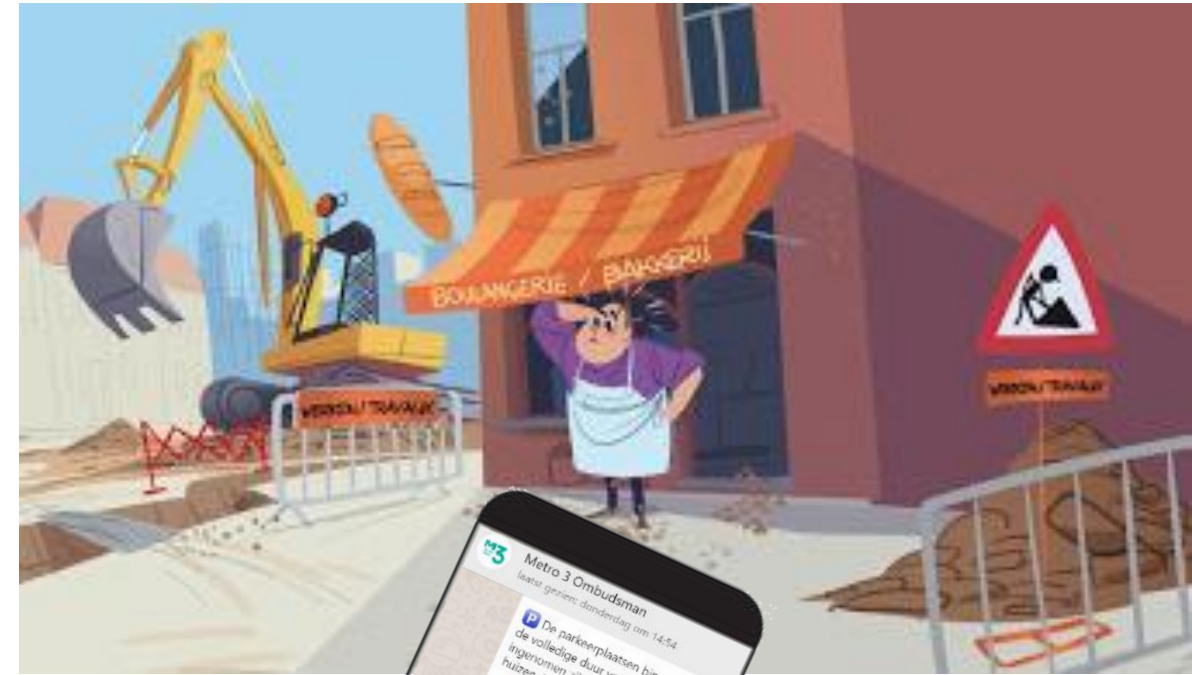


# Change 2 : people involved

Good communication

Disturbances

Get involved... *Telraam.net*





BIENVENUE CHEZ VOS COMMERÇANTS !  
WELKOM BIJ UW HANDELAARS!





LES B  
DES ENFAN  
DE LIEDTS





Clément  
Claire  
Angel  
Valentine  
Inès  
Amine

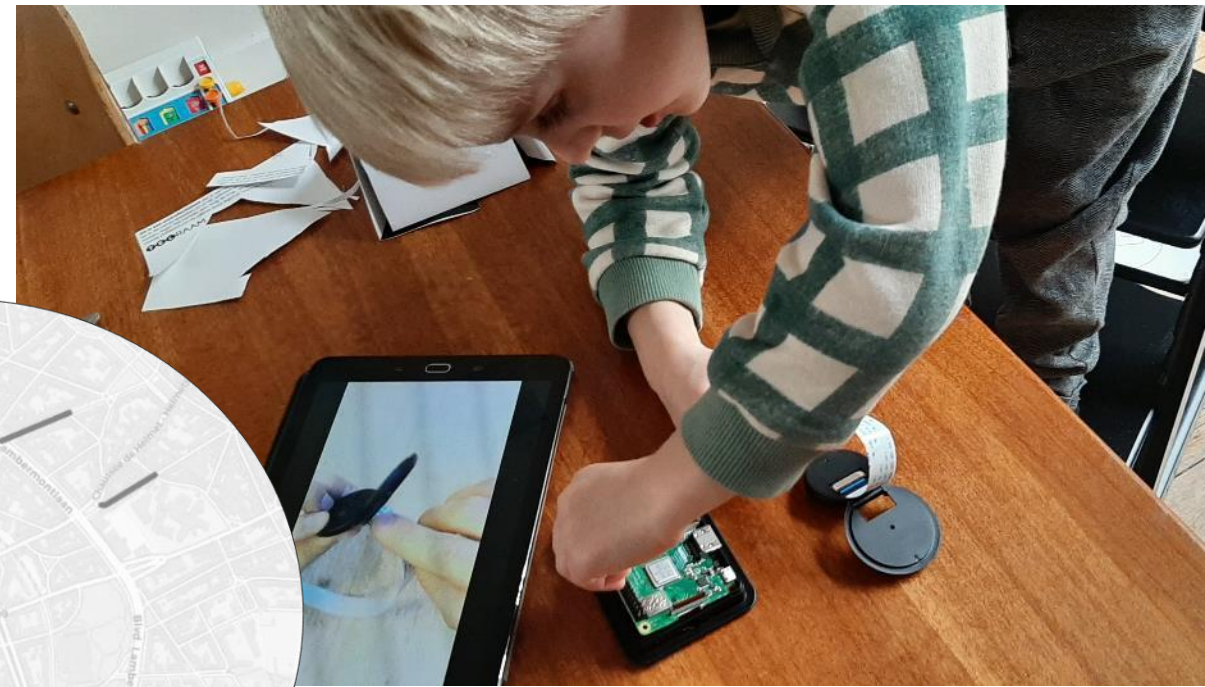


## Change 2 : people involved

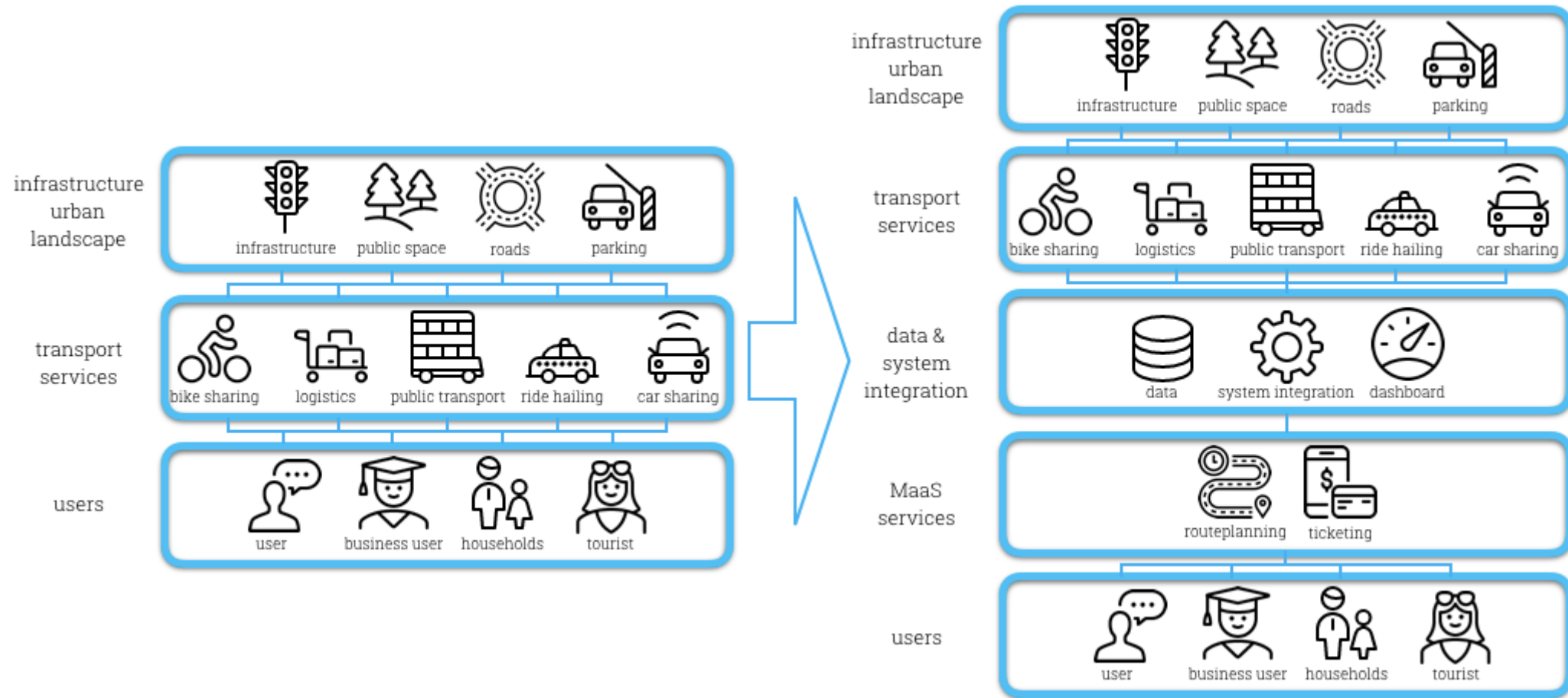
Good communication

Disturbances

Get involved... *Telraam.net*

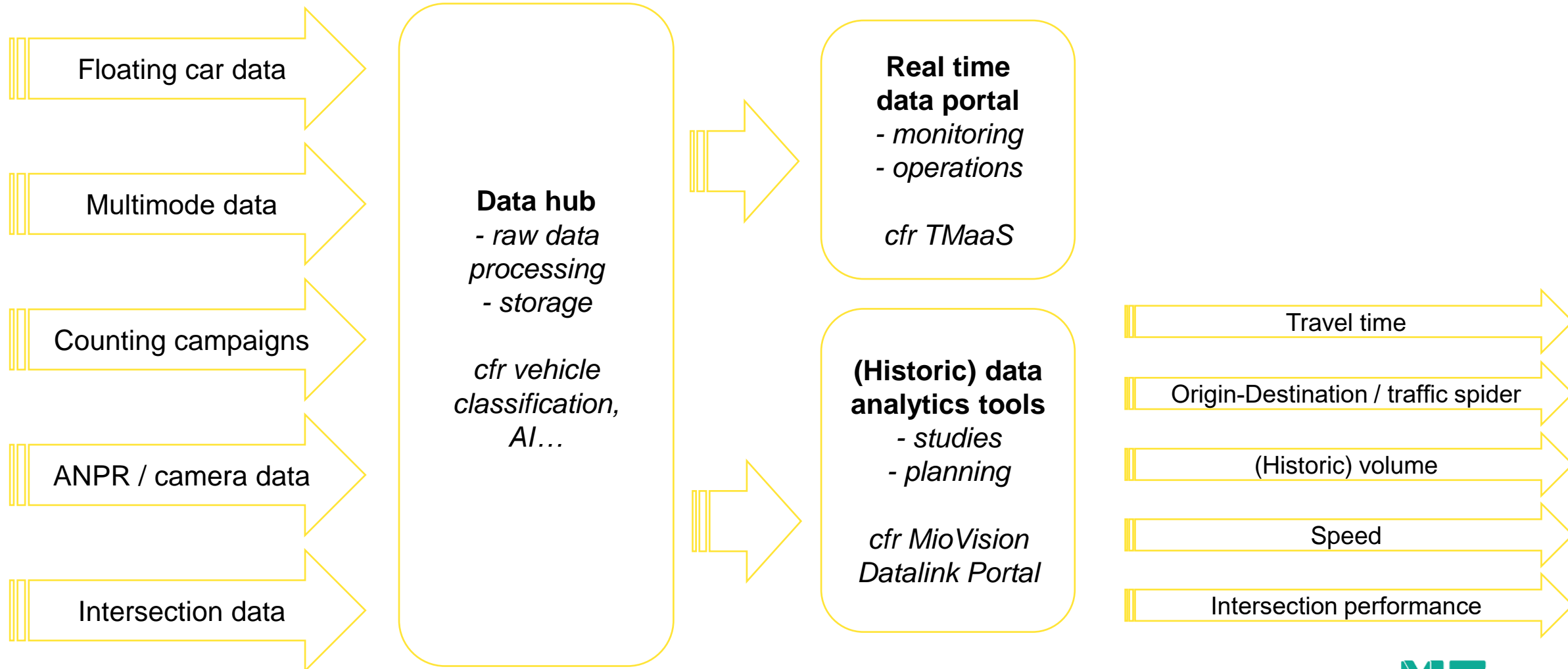


# Change 3 : mobility data revolution





# Data revolution







# Data revolution

Floating car data

Multimode data

*ODIQ Google  
Be-Mobile  
TomTom GPS nav  
Here GPS*

**All modes?**  
*Bike Citizens  
Bike Data Project*

...

Origin-Destination - bike

Traffic volume - bike



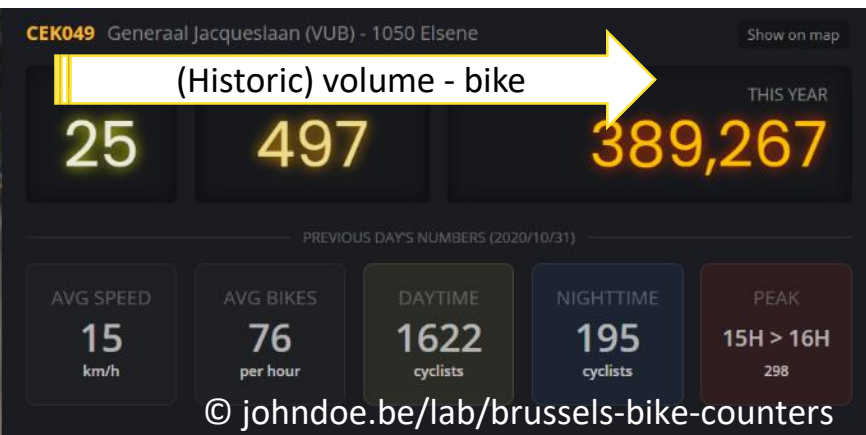
# Data revolution

Counting campaigns

ANPR / camera data

Intersection data

Radar  
camera  
AI  
ANPR  
...





# Data revolution

Counting campaigns

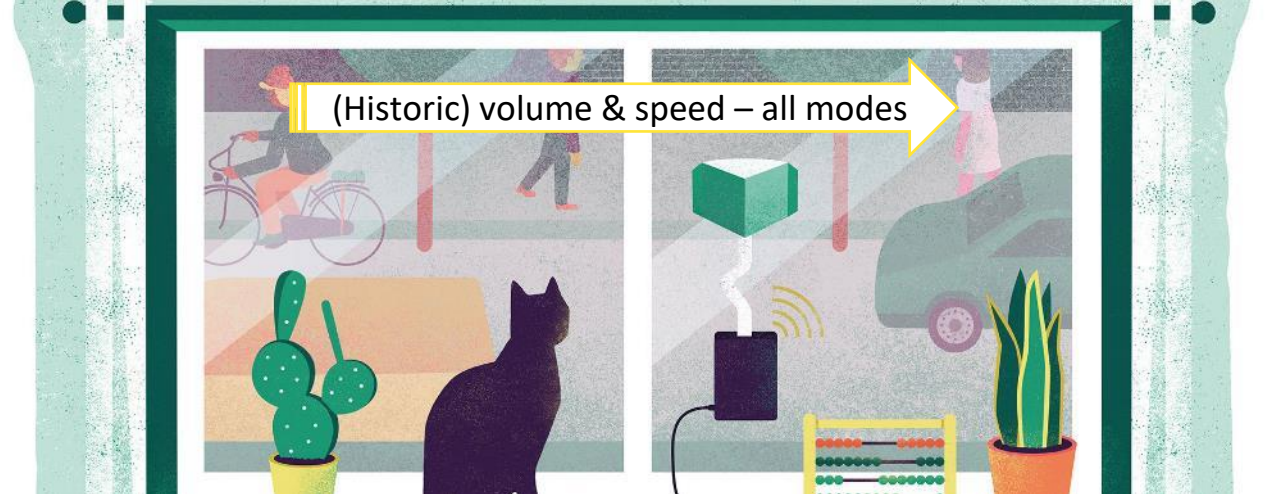
ANPR / camera data

Intersection data

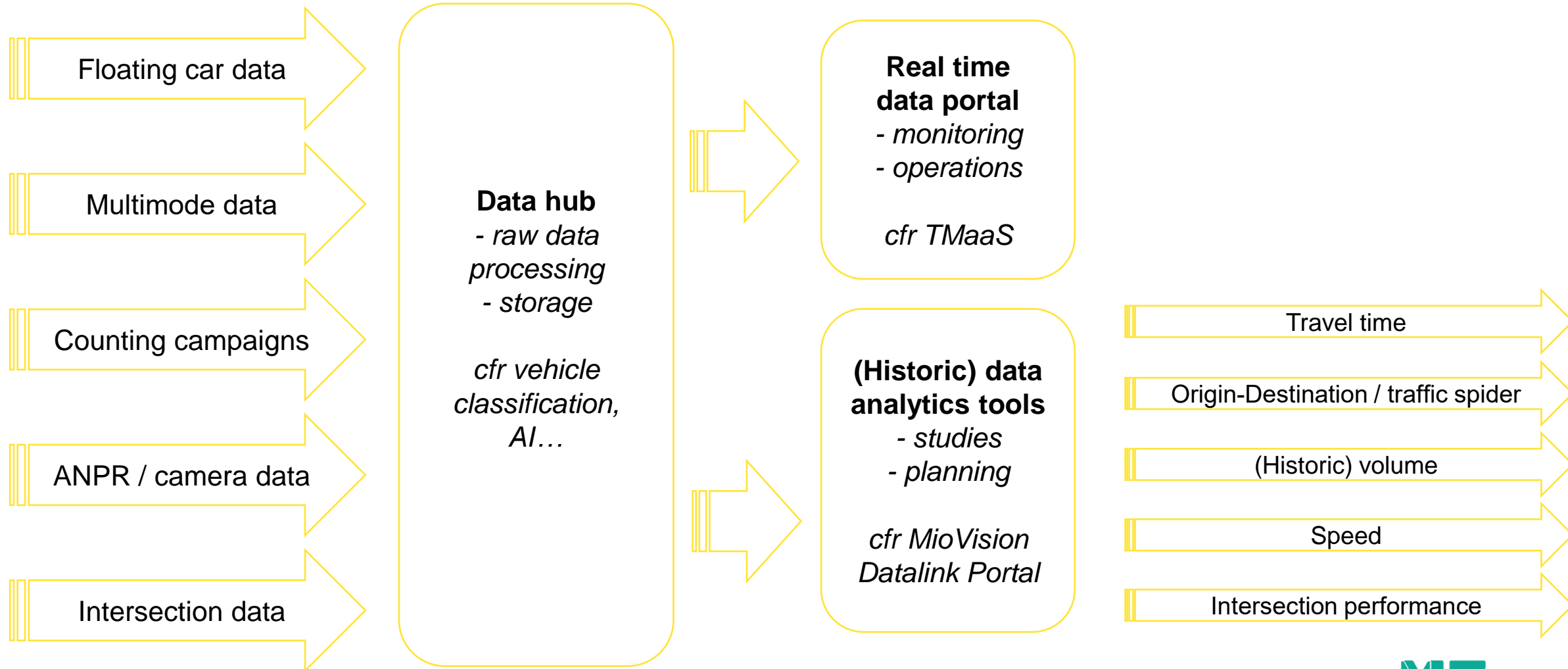
*Radar  
camera  
AI  
ANPR  
...*



(Historic) volume & speed – all modes



# Data revolution

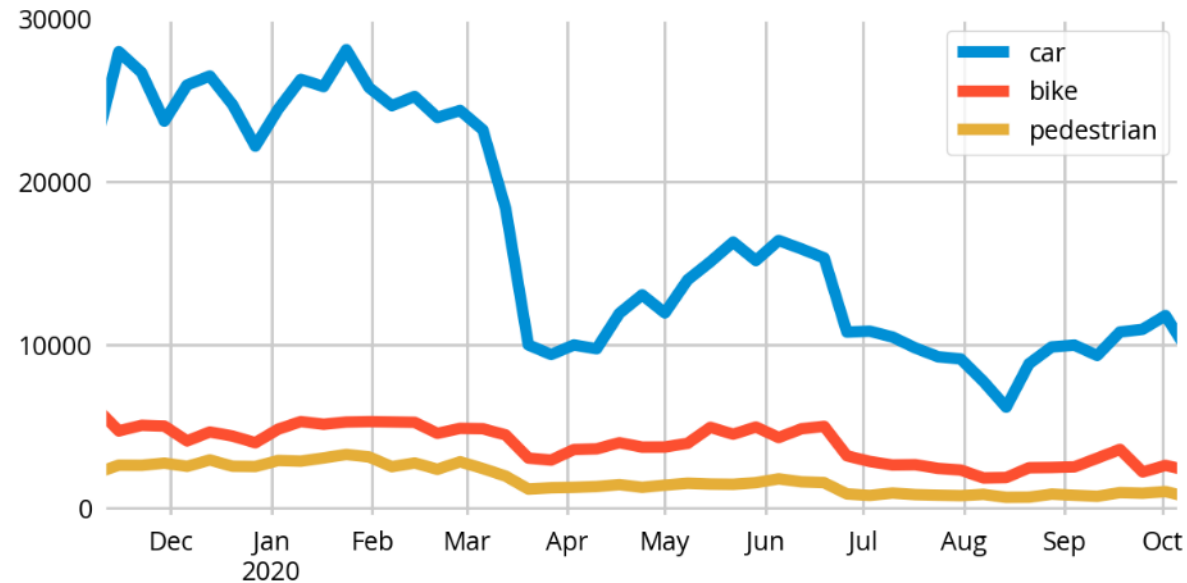




# Data revolution

## Traffic in Brussels, 2020

Average weekly traffic count in 74 streets - Data telraam.net - Visualisation reinventingthewheel.eu



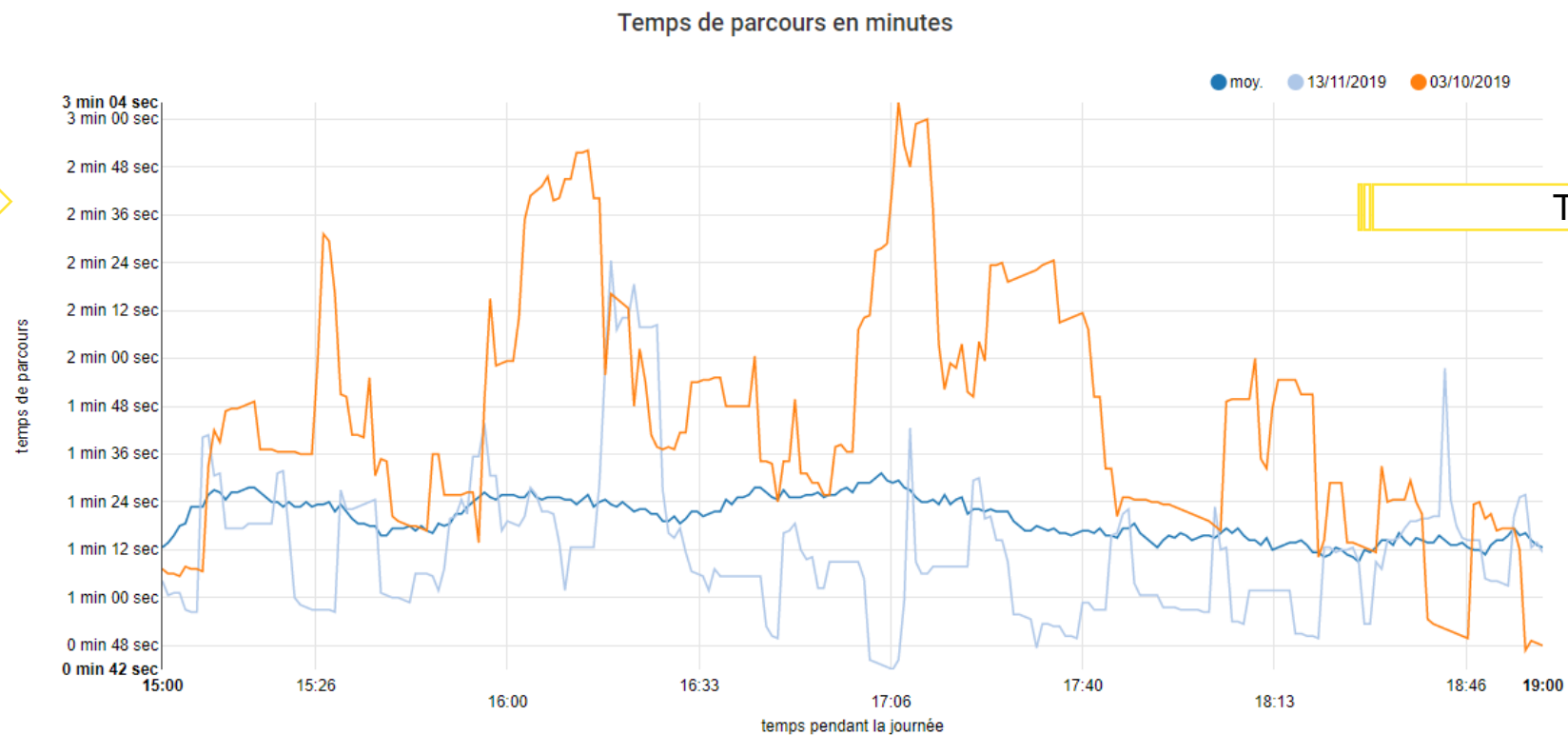
ANPR / camera data

(Historic) volume & speed – all modes

# Data revolution



Floating car data



Travel time



# Conclusion : traffic management during construction works



**Write use case & determine output first**

**Use (historic, all mode) mobility data**

**Use (fast) analytics tools**



# Conclusion : traffic management during construction works



Write use case & determine output first

Use (historic) mobility data

Use (fast) analytics tools

**Avoid car focus, SUMP is your guide**

**Road closures & construction works can learn us about mobility behavior**

**Infrastructure works create a mental shift**



# Conclusion : traffic management during construction works



Write use case & determine output first

Use (historic) mobility data

Use (fast) analytics tools

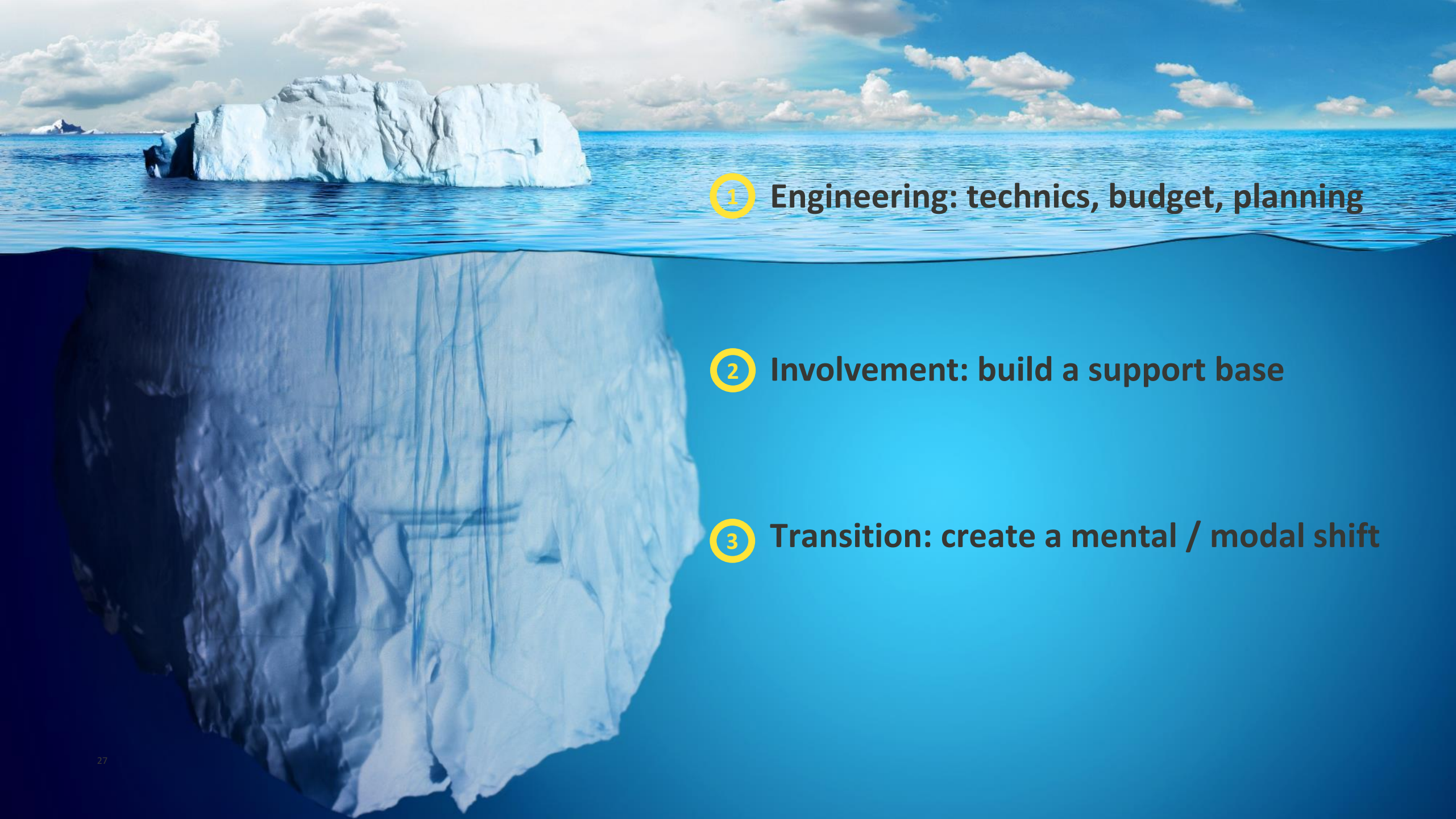
Avoid car focus, SUMP is your guide

Road closures & construction works can learn us about mobility behavior

Infrastructure works create a mental shift

**The end goal: quality of life**





① **Engineering: technics, budget, planning**

② **Involvement: build a support base**

③ **Transition: create a mental / modal shift**



# Questions?

**Matthias Van Wijnendaele**

**Public Works Coordinator  
Beliris.brussels**

