



Transport for  
**West Midlands**

# NETWORK RESILIENCE EVOLUTION THROUGH INNOVATION

POLIS 30 November 2020

Deborah Fox, Head of Demand Management,  
Transport for West Midlands, United Kingdom

Sponsored by

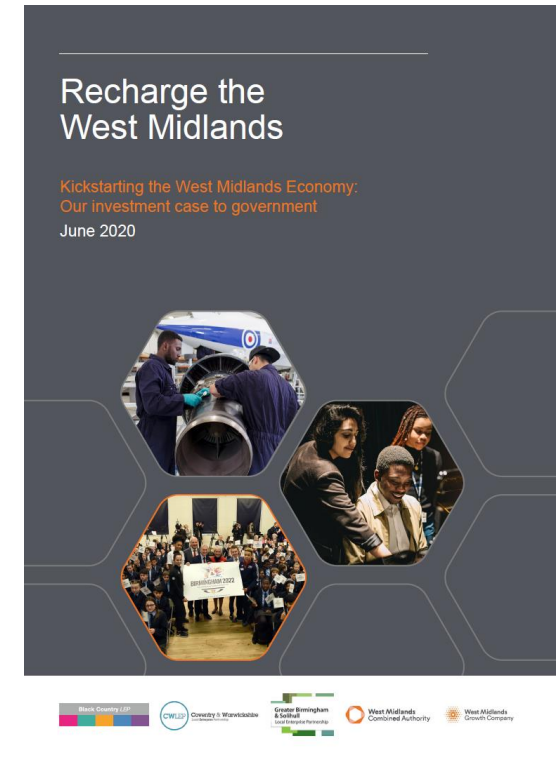
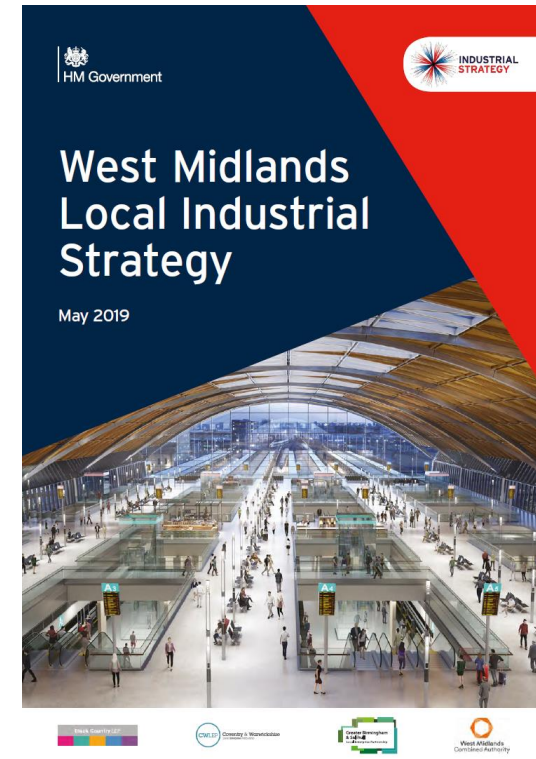
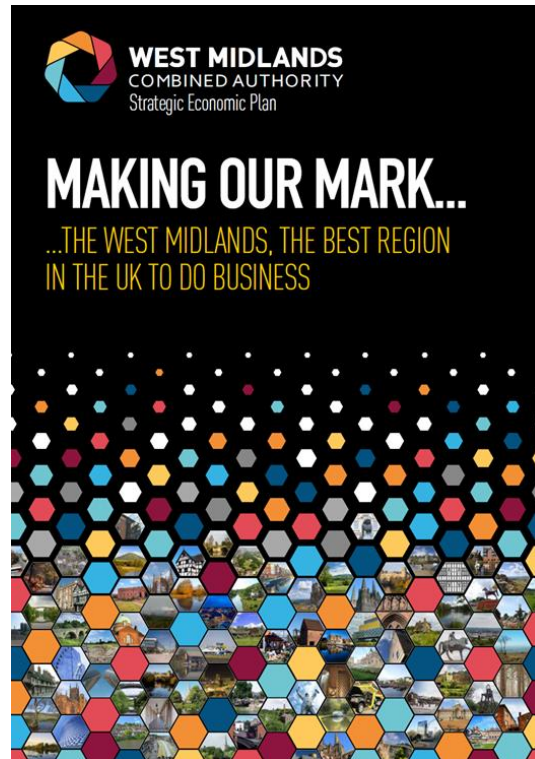


- 
1. Strategic context
  2. Key traffic challenges facing the West Midlands
  3. Network Resilience Live Lab

Meeting the challenge is about  
understanding transport + technology  
+ our PEOPLE

# Strategic context in the West Midlands, UK

*“Building a healthier, happier, better connected and more prosperous West Midlands”*





Record

# 8.4 billion miles

driven on the region's roads in 2016



Public transport use (2016/2017)

Bus (81%)



Rail (17%)



Metro (2%)



## Transport for West Midlands

### Key Route Network key statistics

# 50%

Of road traffic is carried on

# 7%

Of the road network



# 17.7mph

Average weekday peak speed



Over

# 800,000

Daily bus trips



### A growing region

Between now and 2035, our region will grow every day, by:

# 100 people

Which is the equivalent of filling an extra...



# 1.5 buses

or



# 84 cars

or

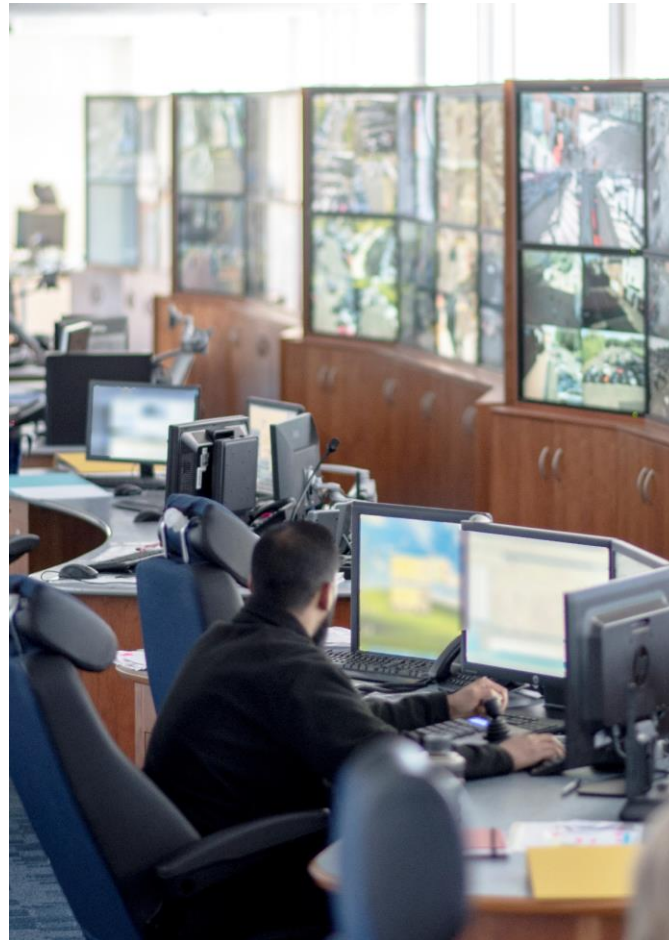


# 0.5 trams

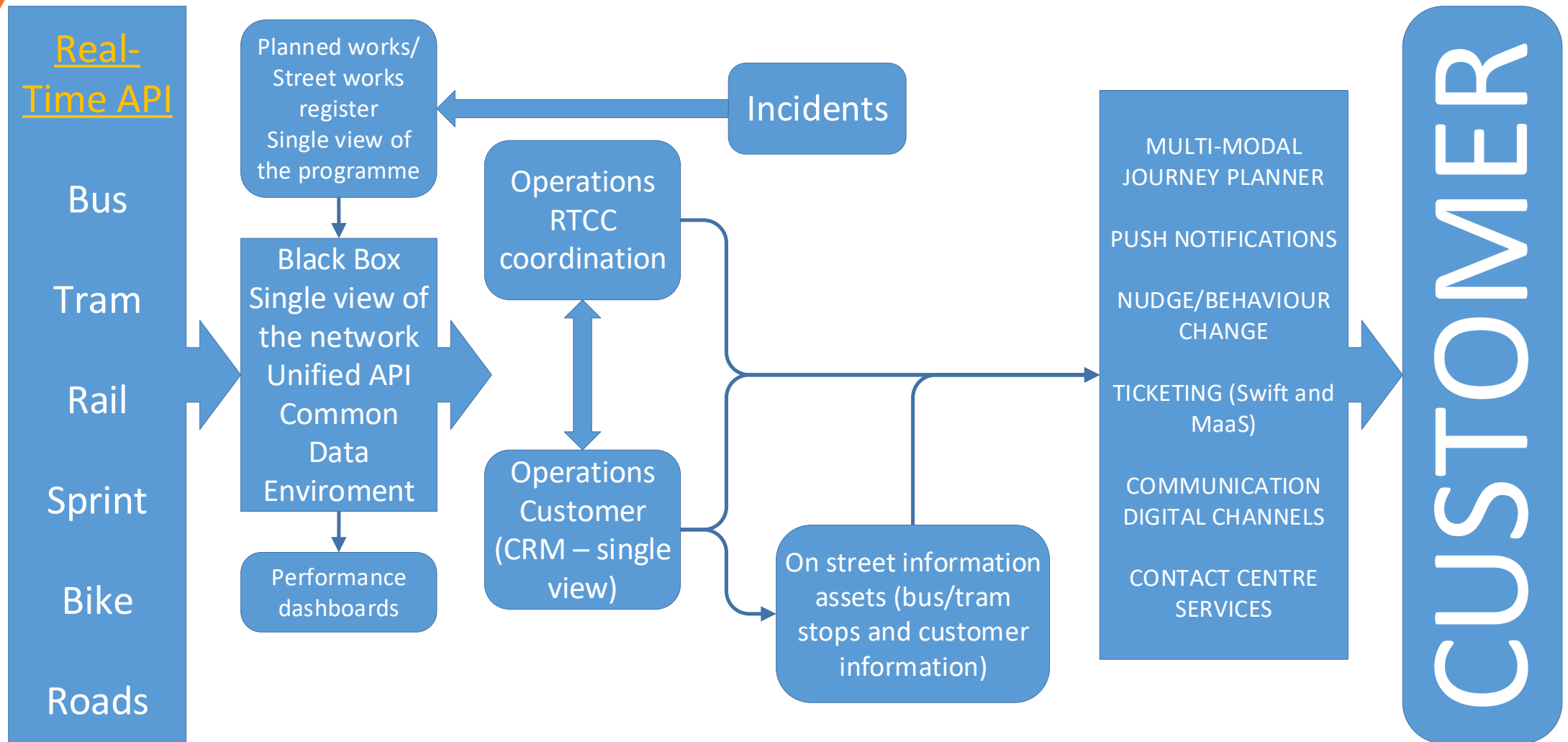


## A multi-modal centre for monitoring the transport network and planning for impacts

## A multi-modal centre for monitoring the transport network and planning for impacts



# A revolution in citizen engagement



# Communications and engagement strategy

- Nudge tactics
- More sustainable travel
- Reduced congestion
- Healthier citizens

Create positive change



- Collaboration and partnership
- Technological solutions
- Real time
- Targeted activity

Minimise impacts

- One version of the truth
- Reliable / accurate

# A456

## Five Ways Underpass closed until 2021

Stuck in delays today?

Plan ahead for a better  
journey tomorrow





# Network Resilience Live Lab May '19 - Nov '21



Transport for  
West Midlands

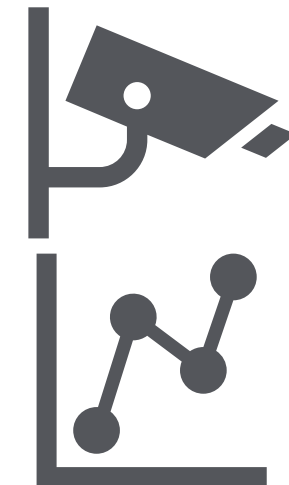
## ADEPT SMART Places - Live Labs



# ADEPT

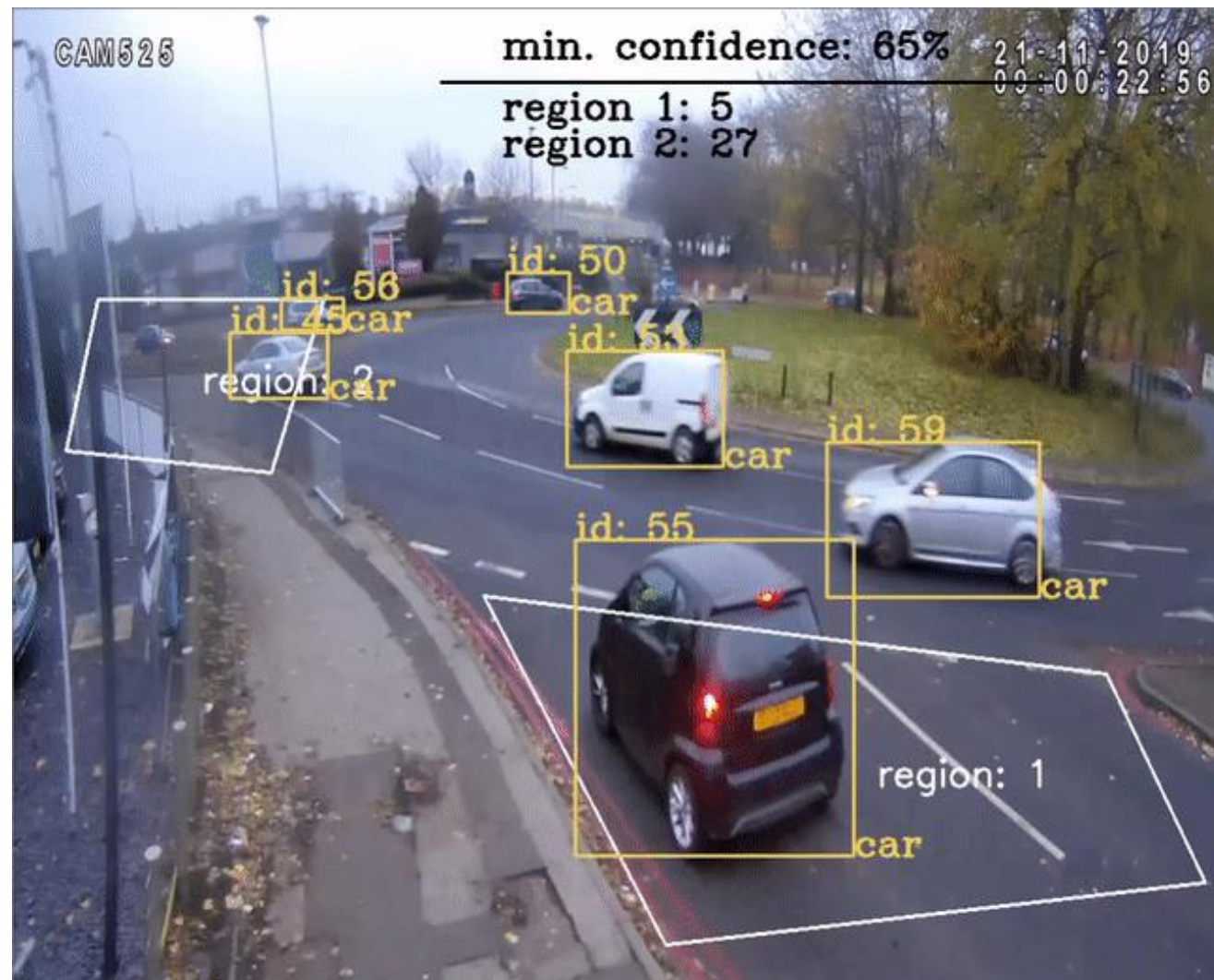
Association of Directors of  
Environment, Economy, Planning & Transport

In Partnership  
With

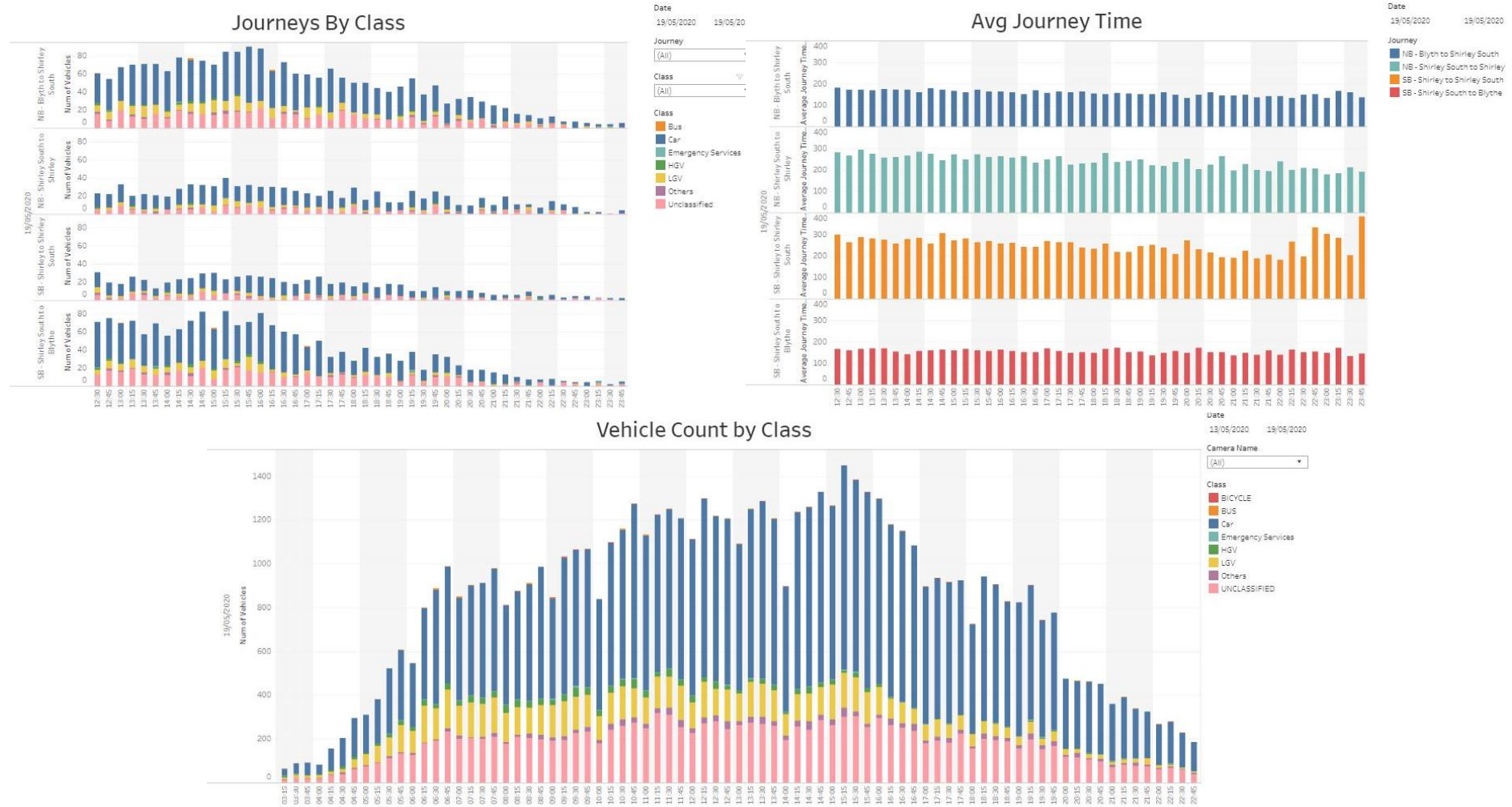


AD **LIVELABS**

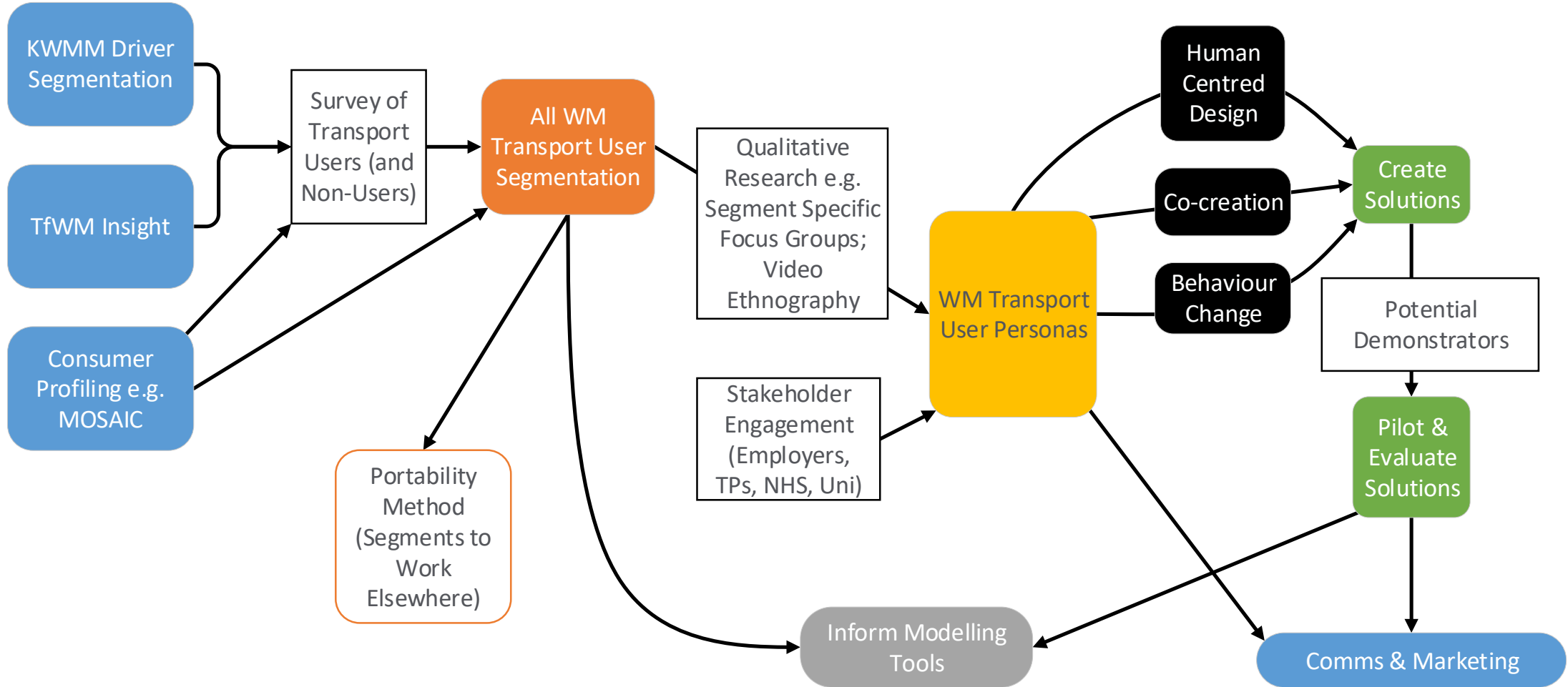
## Data and Testing – video capture



# Data and testing - analytics

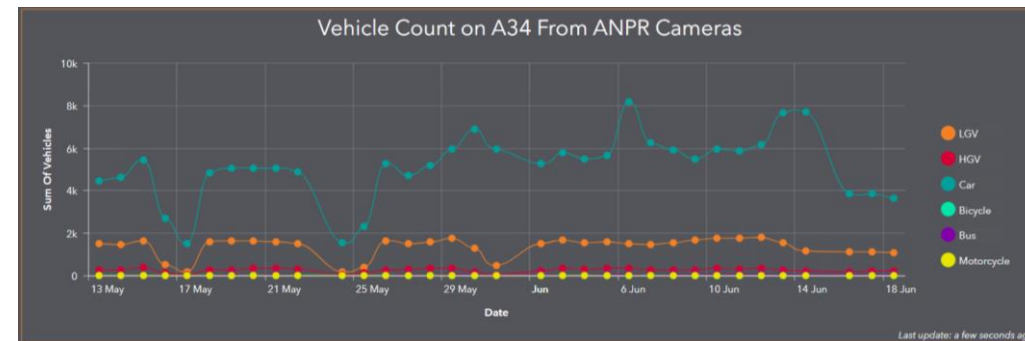
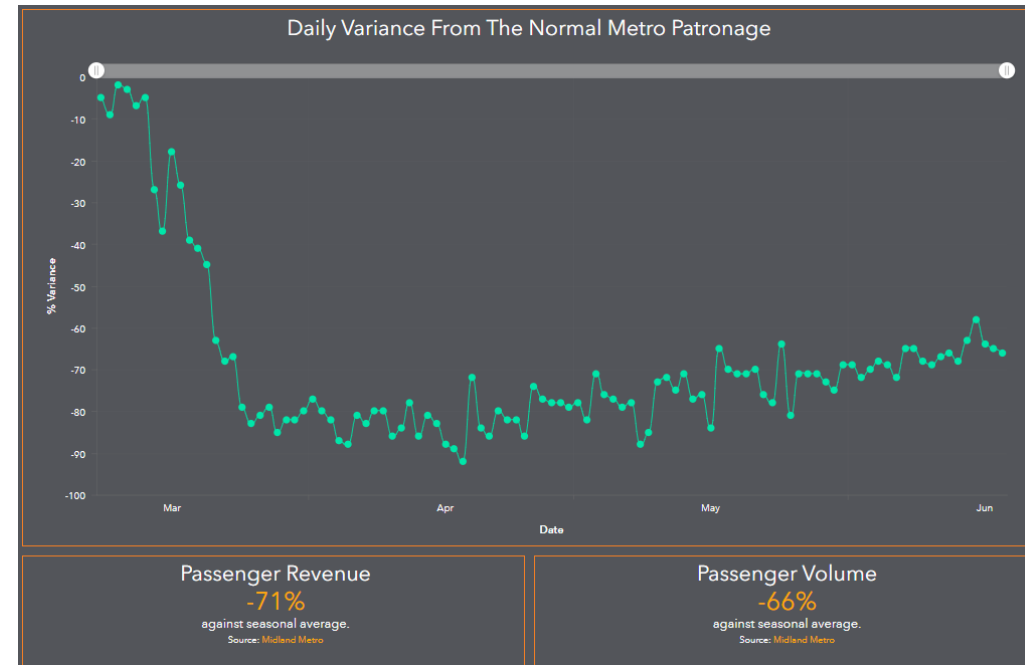
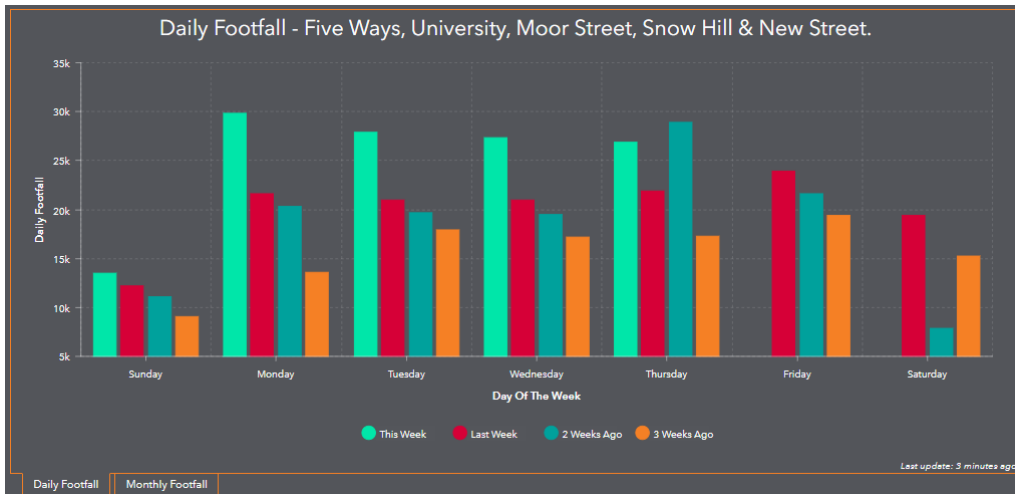
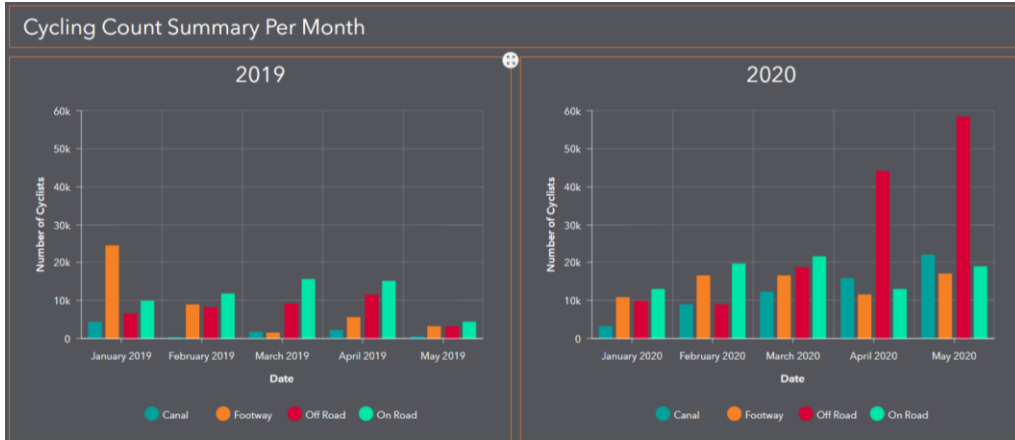


# Travel personas





# COVID-19 applications

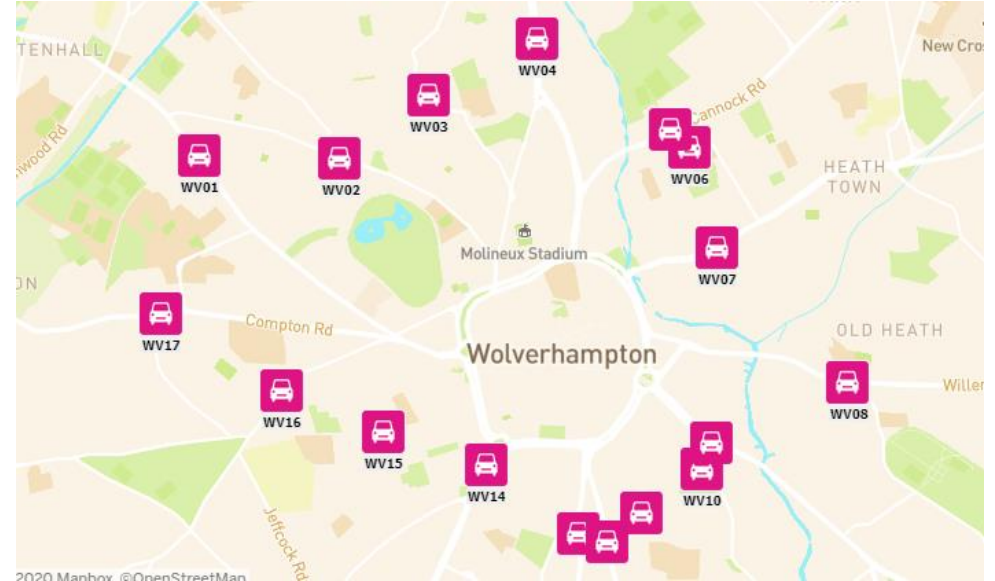


## Challenge

- The West Midlands has collected highways data for over 15 years for use in transport planning and modelling.
- However, the outdated technology and cost has resulted in counts being undertaken for 1 week every 2 years.
- Whilst this provides long term trend it no longer meets the needs for 24/7 data.

## Opportunity

- April 2018 TfWM first engaged with West Midlands Police.
- West Midlands Police captures Automatic Number Plate Recognition data as part of tracking criminal activity.
- However they cast aside the “normal” activity – the data that is valuable to TfWM and the local authorities/ municipalities.



**Wolverhampton cordon count data sites – providing road trends data for over 15 years**

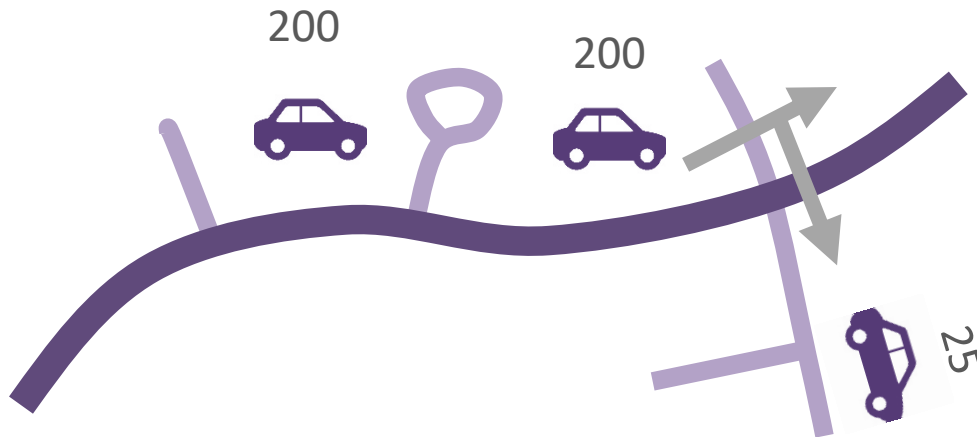
# The West Midlands Data Engine



# Solutions

## Using the West Midlands Police real time data – via QRO

**4.5 million** data points per day



```
{
  "vrnHash" : "61768db8d1a38f1c16d3e6eea812ef423c739068",
  "dateTime" : "2018-01-27T13:14:15",
  "classification" : 11,
  "locationId" : 1234,
  "locationX" : -3.3380599,
  "locationY" : 52.2747002,
  "xyType" : "WGS84",
  "vehDirection" : "T"
}
```

"FieldID": "FieldValue"

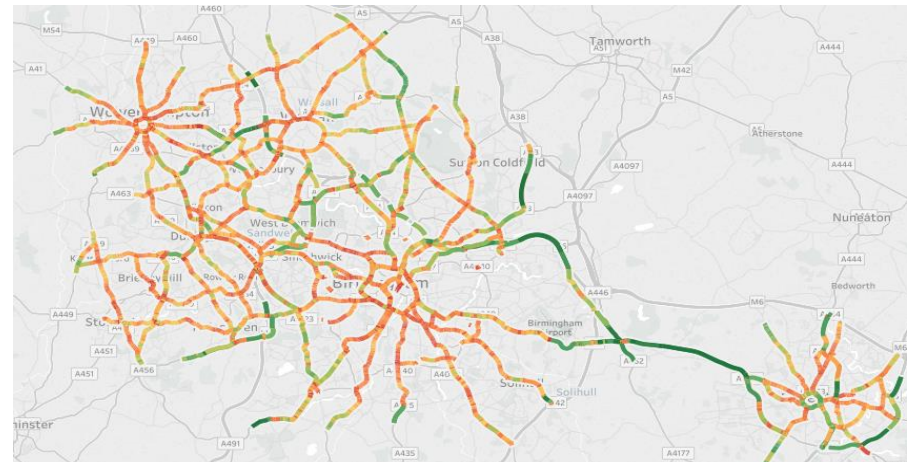
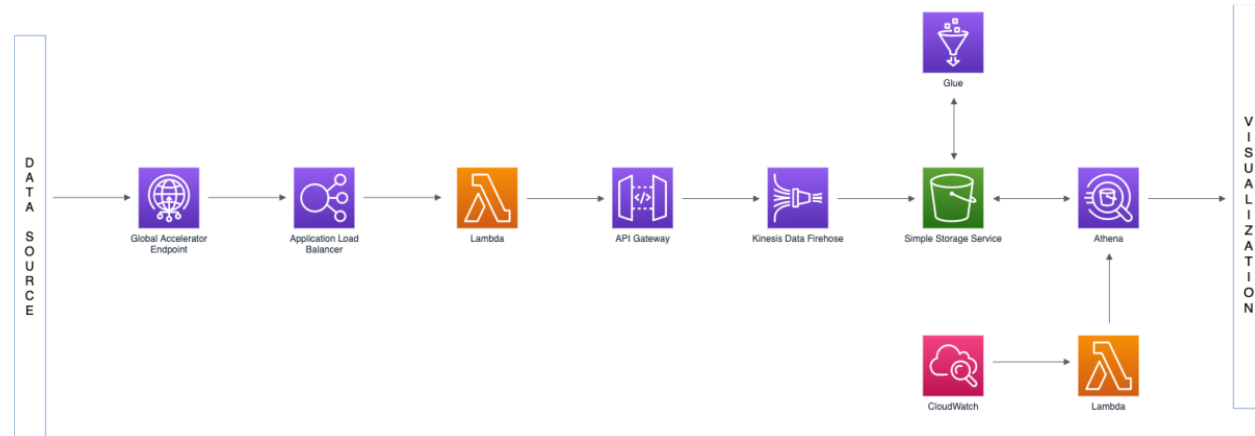
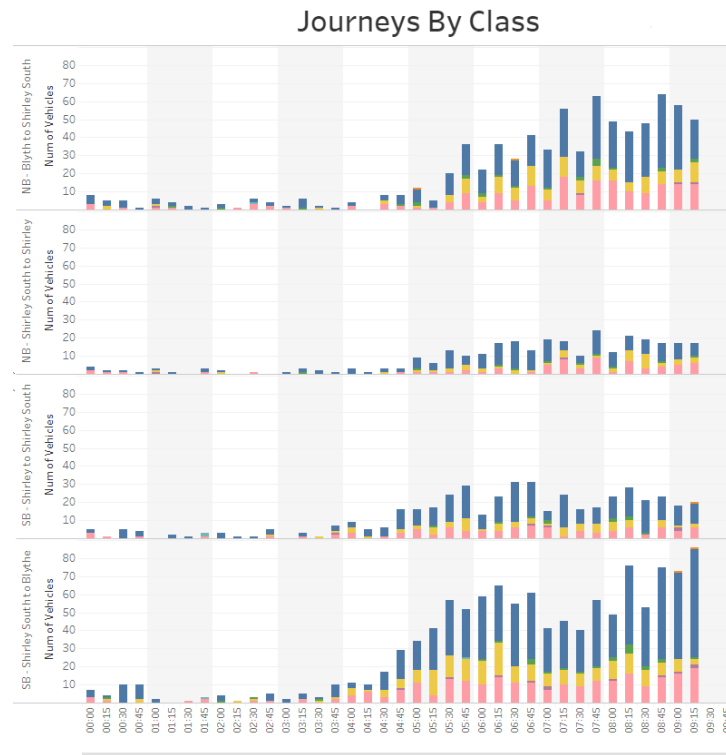
Which fields are sent can be configured to include any of the following ANPR data:

Data	FieldID	Description	FieldValue
Capture Time	CaptureTime	Plate read capture time	See section 2.5
Make	Make	Vehicle make	See section 2.6
Model	Model	Vehicle model	See section 2.6
Colour	Colour	Vehicle colour	See section 2.6
Class	Class	Vehicle classification	See section 2.7
Engine Type	EngineType	Vehicle engine type	See section 2.8



# Amazon Web Services realtime data

By gathering 24/7 data on the Key Route Network, in real time, it will be possible to have a near real time view on the main roads of the West Midlands and provide the data volume to deep learn standard travel patterns and therefore support more accurate traffic modelling.



## The benefits



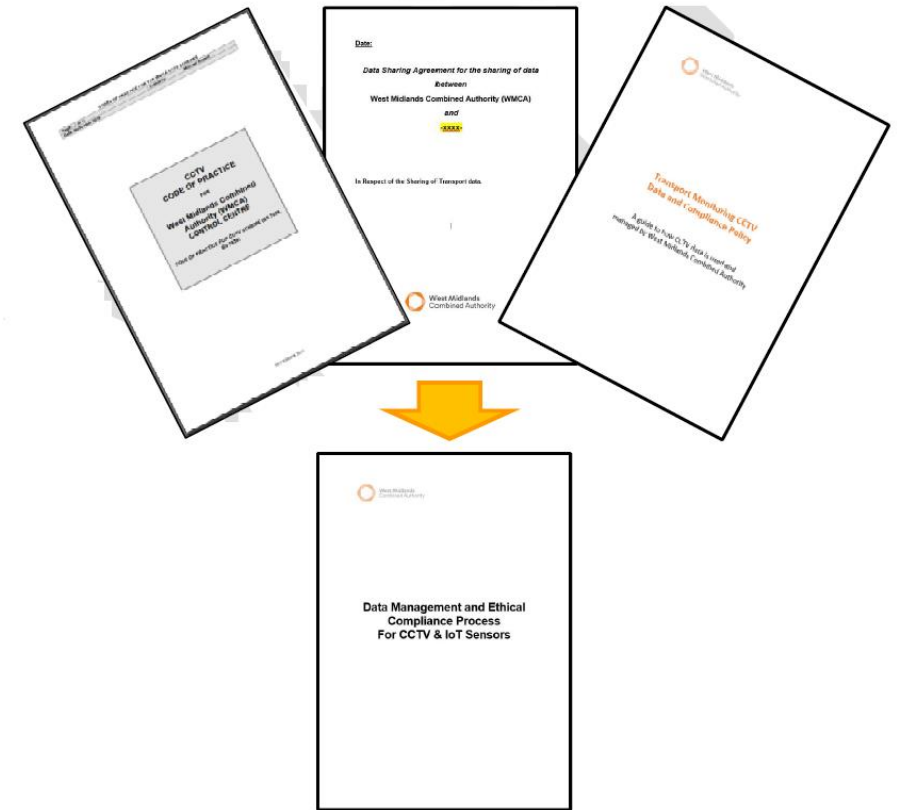
- West Midlands Police funded to deploy more ANPR cameras.
- TfWM receive higher volumes of data for much lower cost.
- TfWM utilise the Police framework for camera deployment.
- Public sector co-operation.

# Privacy, ethics and GDPR

In the project, we have produced:

- A memorandum of understanding between TfWM and West Midlands Police that includes privacy, data sharing and a service level agreement.
- A CCTV Data and Compliance policy.
- IoT Data Management and Ethical Compliance Process.
- Undertaking governance on the transport side.
- Introducing online workflow management of data sharing:

<https://www.informationsharinggateway.org.uk/>



**THANK YOU**  
**DEBORAH.FOX@TFWM.ORG.UK**

**NETWORK RESILIENCE LIVE LAB WWW.TFWM.ORG.UK/LIVELAB**

**RTCC VIDEO HTTPS://WWW.YOUTUBE.COM/WATCH?V=QEMFZHEIVI4**

**CONGESTION MANAGEMENT PLAN**  
**HTTPS://WWW.TFWM.ORG.UK/MEDIA/2917/CONGESTION-MANAGEMENT-PLAN**

Sponsored by

