

# POLIS

CITIES AND REGIONS FOR TRANSPORT INNOVATION

regio arnhem  
nijmegen

## TfGM's City System Plan for Health and Transport towards meeting decarbonisation goals

Stuart Blackadder

Logistics & Environment Officer  
Transport for Greater Manchester



Transport for  
Greater Manchester

Annual Conference **2020**



**#POLIS20**

# The Challenge

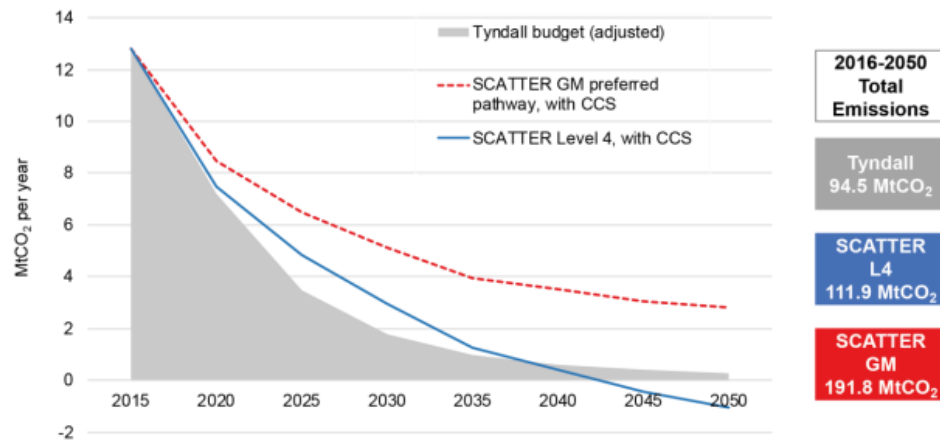


Figure 2 – Potential Carbon Reduction Pathways for Greater Manchester.

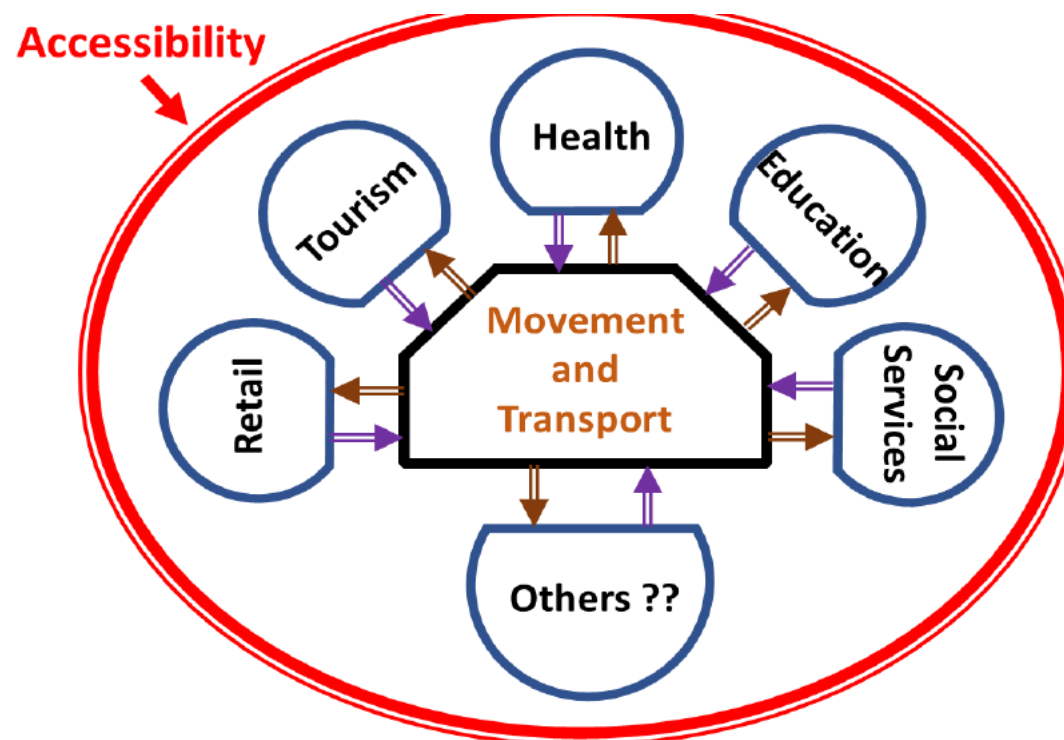
Source: Anethesis



- Cities face a major challenge in achieving carbon reduction targets (e.g. zero carbon by 2038 in Greater Manchester)
- SUMP's provide a strong foundation for meeting this challenge, but can be strengthened in several respects.

# The need for Cross-Sectoral Collaboration

- Total distance travelled overall must reduce;
- Most passenger and freight transport demand originates outside Transport Sector;
- Those organisations / sectors rarely take account of costs they are imposing on the transport system.



## KEY:

### Impact of Transport on Sector: ⇒

(e.g. Health)

+ = healthy travel

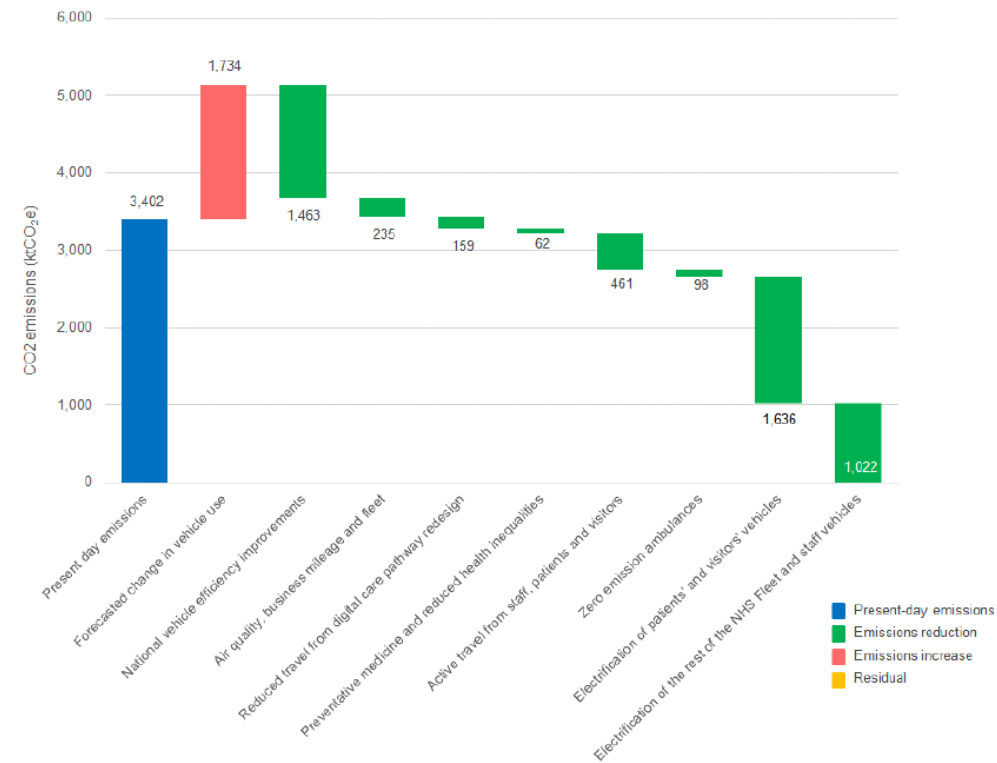
- = pollution, safety

### Impact of Sector on Transport: ⇒

- What demands do service delivery models and investments put on transport?

# e.g. NHS: Net Zero projections

Figure 8: Interventions to reduce transport and travel emissions



Source: 'Delivering a net zero NHS'

# SUMP PLUS

## WHAT?

Project activities focus on achieving four key objectives:



### OBJECTIVE 1

Develop context-specific mobility transformation pathways



### OBJECTIVE 2

Forge cross-sectoral links between transport, public services, and commerce



### OBJECTIVE 3

Implement and monitor cutting-edge mobility solutions

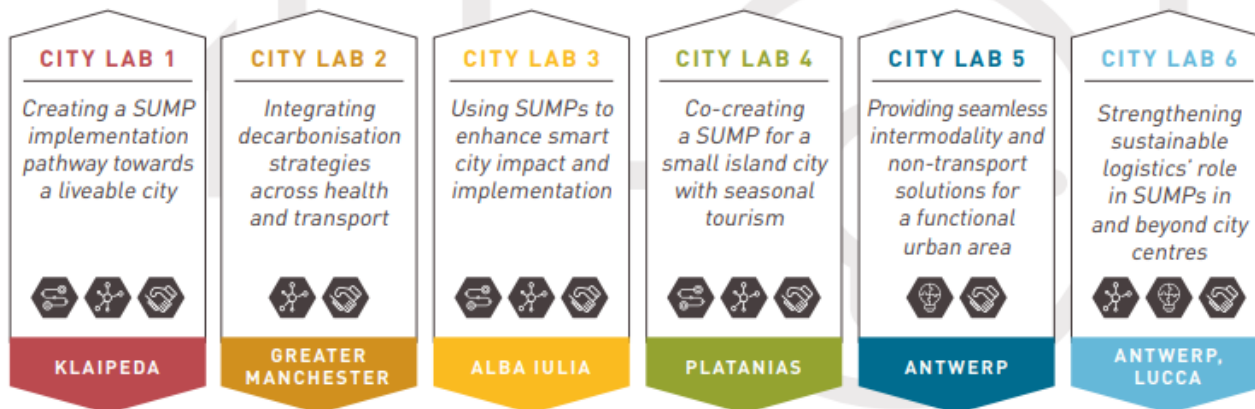


### OBJECTIVE 4

Create new forms of public-private partnerships and business models

## HOW?

The project works within co-creation laboratories in six cities across Europe.

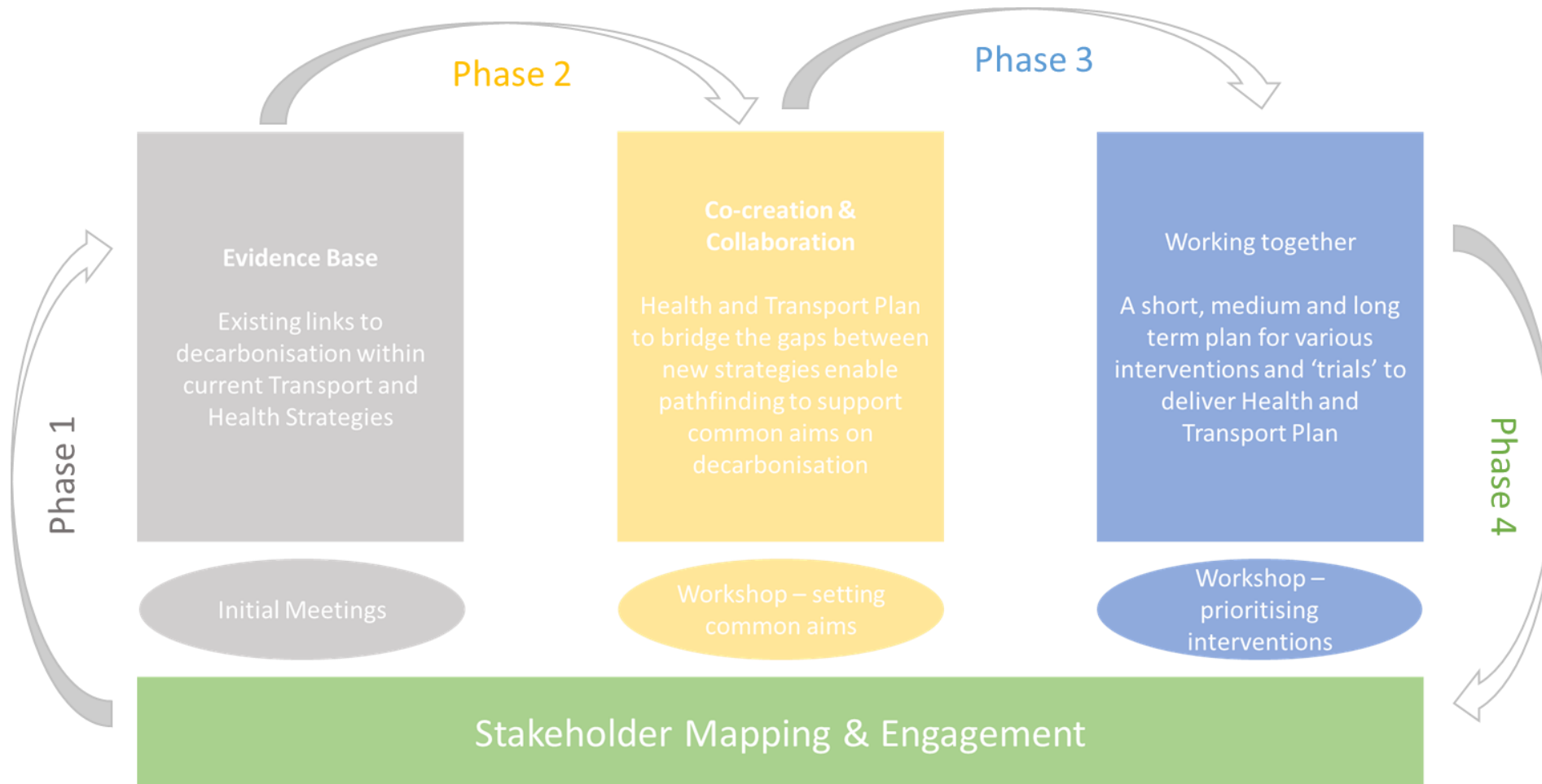


FOLLOWER CITIES REPLICATE THEIR ACTIVITIES



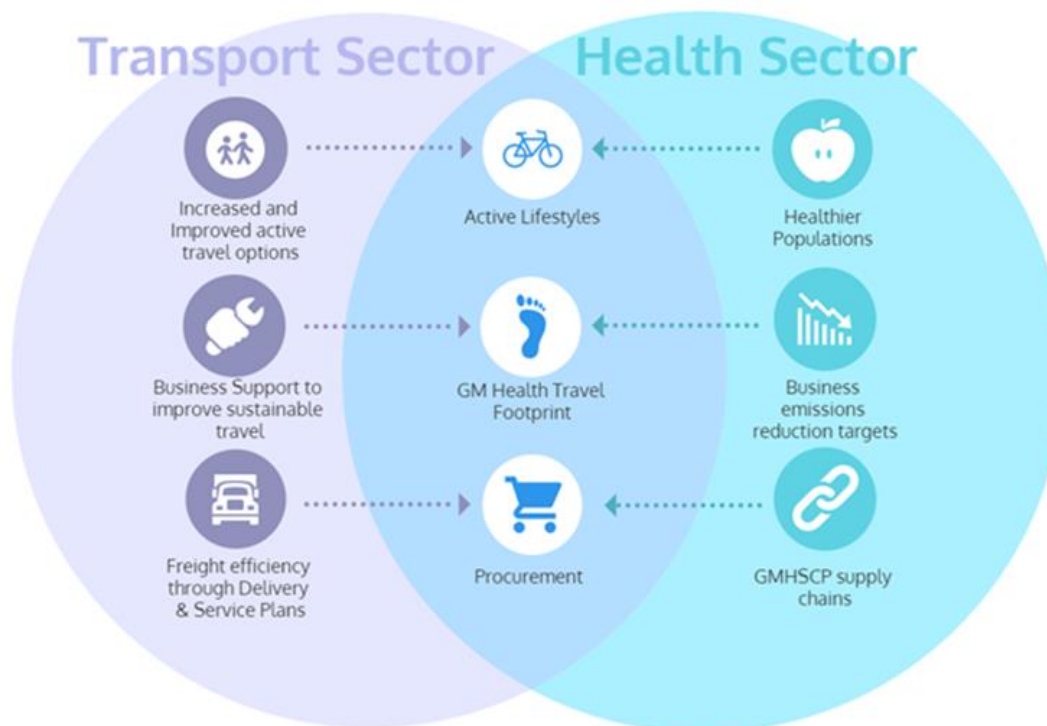
BASED ON THE SUMP-PLUS CITY TYPOLOGY

# GM approach



# Evidence Base

- Exploring existing connections between transport and health sector in Greater Manchester
- **Pre- SUMP PLUS** – used for baseline purposes
- **Sources:** Local Transport Strategies & Local Health Strategies, Interviews, Other Data sets
- **Themes:**
  - Modal Shift
  - Switching Fuels
  - Shorter Health Related Trips
  - Reduced Volume of Personal Travel
- Recommendations:
  - Building on existing links
  - Identifying gaps / missed opportunities



# Themes of the Plan – a Hierarchy

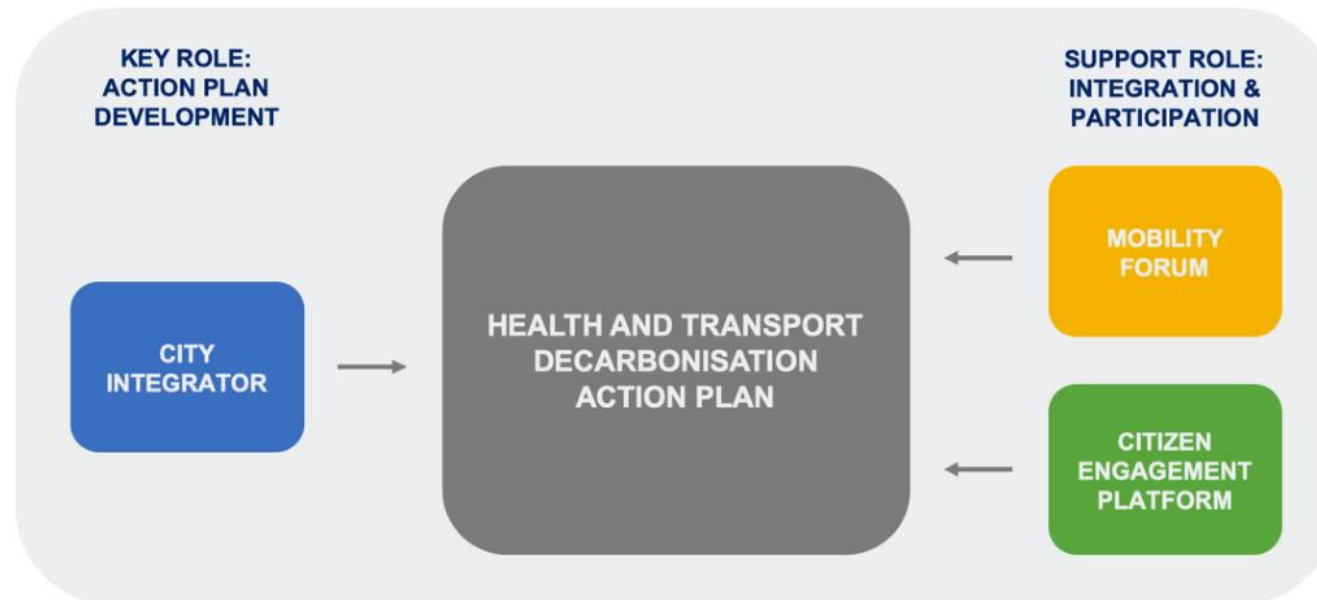
	Transport Benefit	Type of Intervention	Examples
<b>“Partnerships”</b> – Where the focus of engagement activity is to support a transport measure	Reduced carbon and air pollution	Clean air regulations	Clean air zone
		Cleaner vehicle fuels	Electric vehicles
	Changing transport mode shares	Improved public transport services	More frequent buses
		Improved walking & cycling facilities	New cycle network
<b>“Links”</b> –Where the focus of engagement is to improve accessibility to healthcare services, with the potential to reduce longer trips that contribute to congestion and air pollution.  (Often non-transport)	Reduced volume of personal travel	Shared mobility	e-scooters
		Health-related visits to patients’ homes	District nurses
		Home deliveries	Prescriptions
		In-home service provision	Dialysis machine
	Shorter Health-related Trips	Internet communication	Remote consultations
		Localisation of health facilities	District health centres

# Themes of the Plan – a Hierarchy

	Transport Benefit	Type of Intervention	Examples
<b>“Partnerships”</b> – Where the focus of engagement activity is to support a transport measure	<b>Reduced carbon and air pollution</b>	Clean air regulations	Clean air zone
		Cleaner vehicle fuels	Electric vehicles
	<b>Changing transport mode shares</b>	Improved public transport services	More frequent buses
		Improved walking & cycling facilities	New cycle network
<b>“Links”</b> –Where the focus of engagement is to improve accessibility to healthcare services, with the potential to reduce longer trips that contribute to congestion and air pollution.  (Often non-transport)	<b>Reduced volume of personal travel</b>	Shared mobility	e-scooters
		Health-related visits to patients’ homes	District nurses
		Home deliveries	Prescriptions
		In-home service provision	Dialysis machine
	<b>Shorter Health-related Trips</b>	Internet communication	Remote consultations
		Localisation of health facilities	District health centres

# Co-Creation and Collaboration

- The engagement process uses EIP's Best Practice:

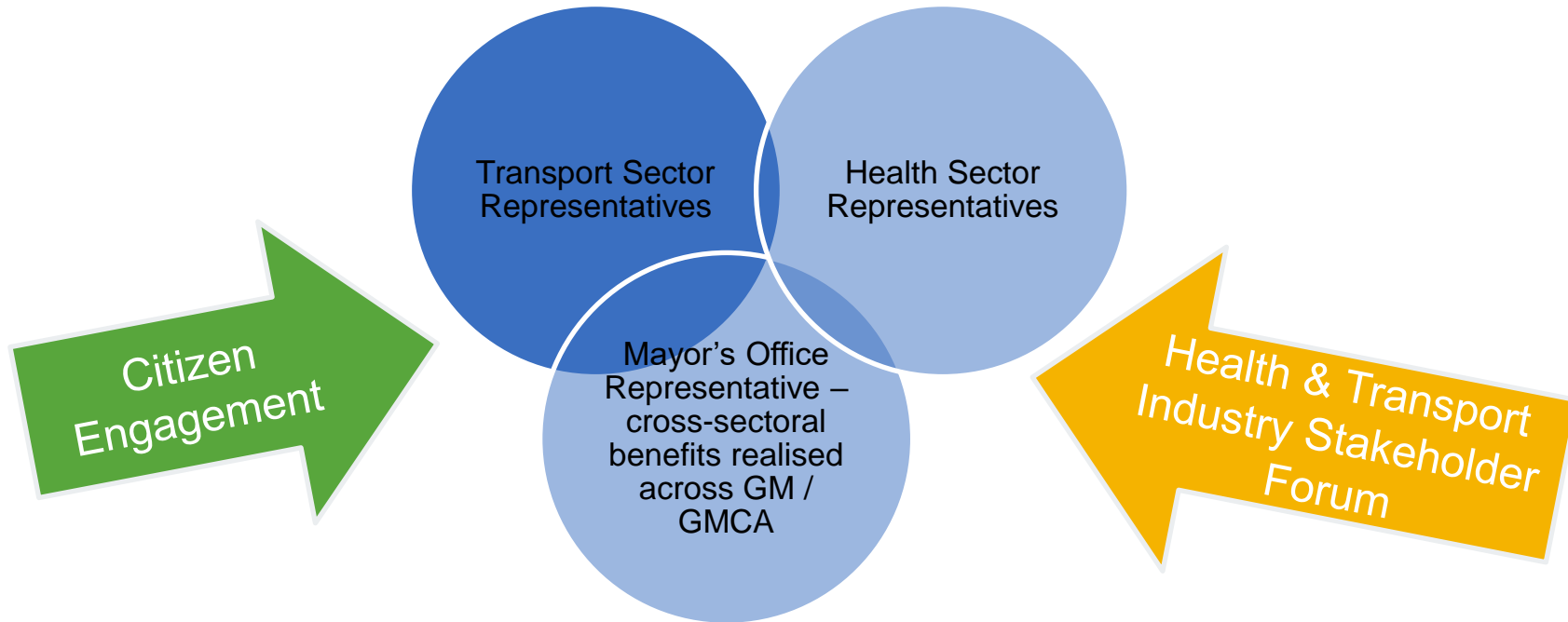
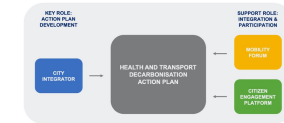


ENGAGEMENT INSTRUMENTS	2020				2021												2022				
	09	10	11	12	01	02	03	04	05	06	07	08	09	10	11	12	01	02	03	...	08
Mobility Forum																					
City Integrator																					
Citizen Engagement																					



# Co-creation and Collaboration What does this look like in GM?

## City Integrator “GM Travel Board”



European Integrated Projects

Thank you for listening!

Please email me if you have any specific questions

- Stuart Blackadder – [Stuart.Blackadder@tfgm.com](mailto:Stuart.Blackadder@tfgm.com)

Legal Disclaimer: The sole responsibility for the content of this presentation lies with the authors. It does not necessarily reflect the opinion of the European Union. The European Commission is not responsible for any use that may be made of the information contained therein. All images are provided by the respective partners (unless otherwise noted) and are approved for reproduction in this publication.

**POLIS Conference 2020**



**#POLIS20**