

POLIS

CITIES AND REGIONS FOR TRANSPORT INNOVATION

regio arnhem
nijmegen

Annual Conference 2020

On-demand Transportation Platform Adaptive Smart Mobility in Alentejo

Carmen Carvalheira
Alentejo Region Vice President

On-demand Transportation Platform

Adaptive Smart Mobility in Alentejo



Alentejo Region

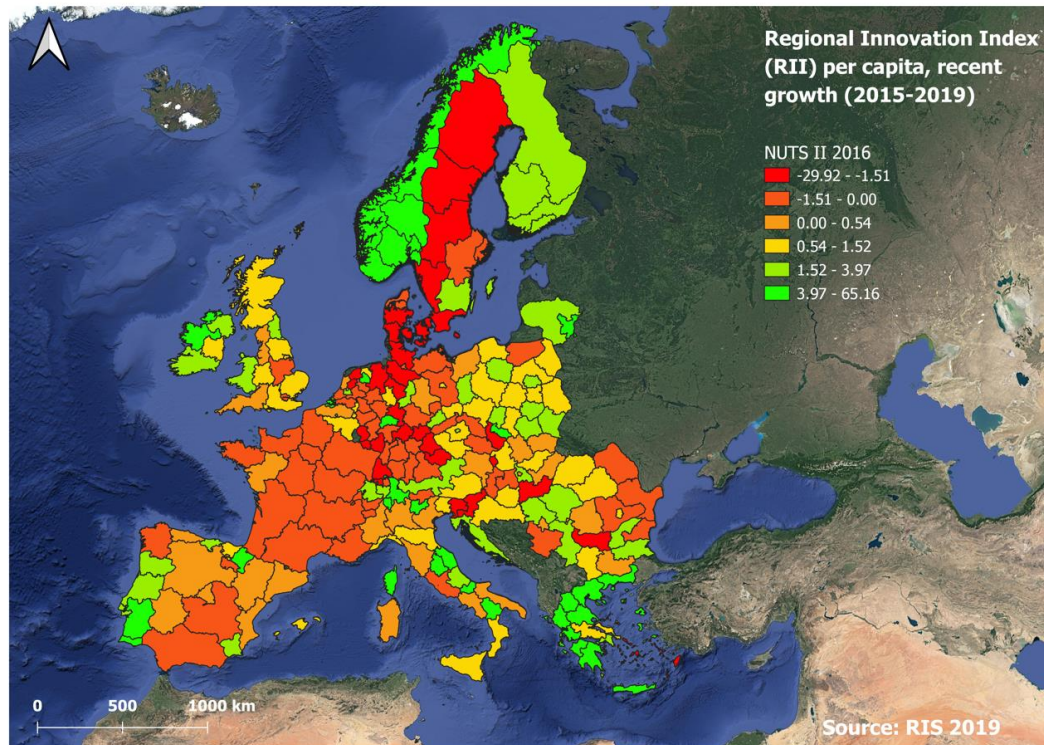
- **Largest Portuguese region:** around 1/3 of the country one of largest European NUTII regions
- **Least populated region:** 7,1% of country population (22.9% > 65 years old).
- **NUTS II: 5 sub-regions / 58 municipalities / 400 parishes.**
- European top 10 in several combined innovation indicators.



On-demand Transportation Platform

Adaptive Smart Mobility in Alentejo

Alentejo, Emerging Region



- A innovative rural territory with **new trends have emerged in the regional digital and smart economy.**
- Regional Innovation Scoreboard 2019: shown an **increase of Alentejo innovation performance over time.**

On-demand Transportation Platform

Adaptive Smart Mobility in Alentejo



Alentejo Green Deal

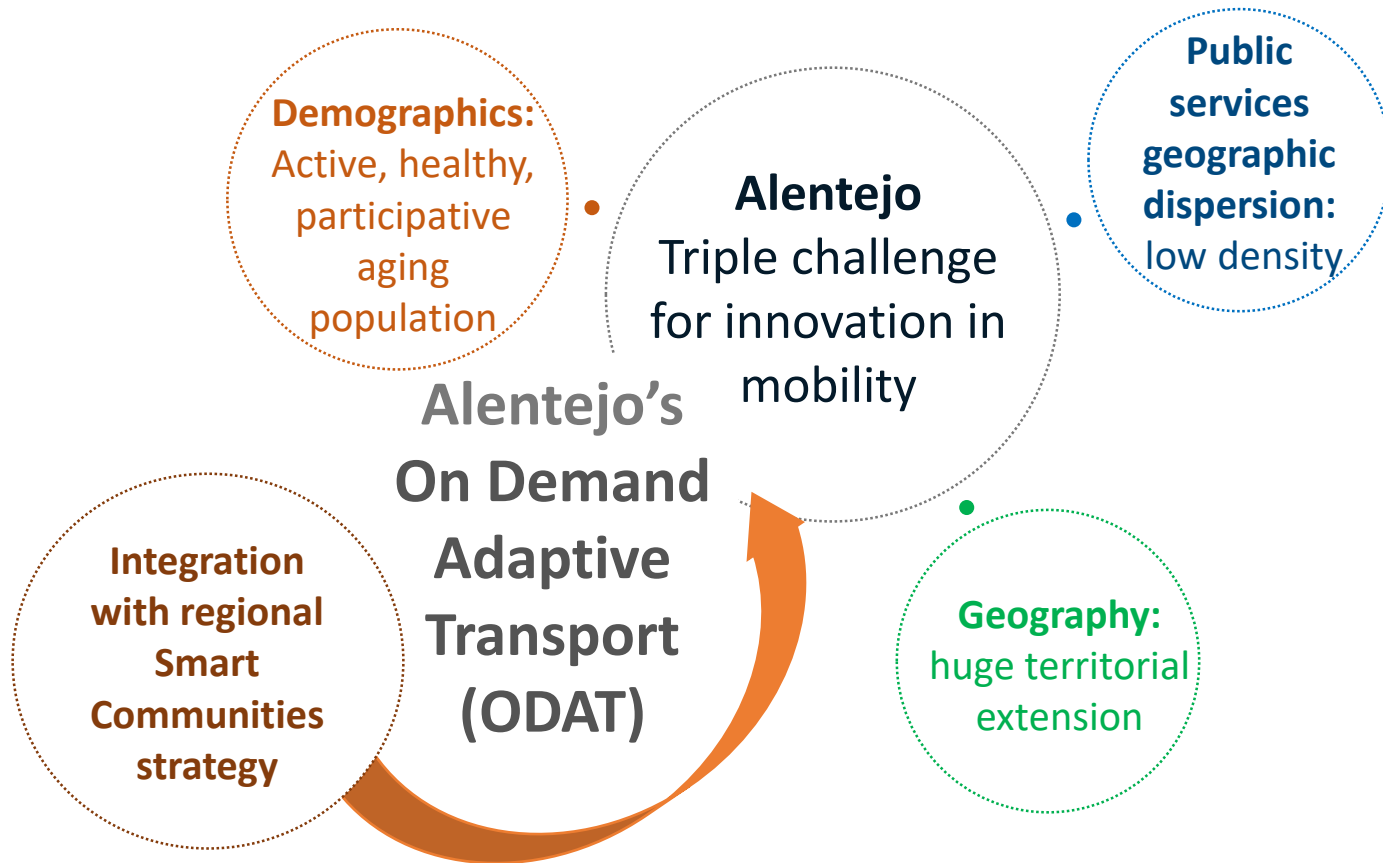
- The successful implementation of the Green Deal can only be achieved if European Regions develop and implement place-based **“Regional Green Deal strategies.”**
- It will promote the mobilisation of **research and innovation** in the region to **foster a just and sustainable societal transition** aiming at **‘leaving nobody behind’**.



On-demand Transportation Platform

Adaptive Smart Mobility in Alentejo

Mobility as a Smart Service in Alentejo



On-demand Transportation Platform

Adaptive Smart Mobility in Alentejo



Mobility as a Smart Service in Alentejo

On-demand-adaptive-transport is a digitally-based smart service to increase coverage of the existing public transport network **linking all Small and Medium-Sized Cities and villages** (providing all citizens with adapted universal, wide, open, fair and just access to public services).

- **Pilot phase [2020]:** 5 regional municipalities.
- **Implementation phase [2021 on]:** all regional municipalities [5 + 53] and other transport modes, including integration of socially oriented, school focused and health related mobility onto an integrated adaptative smart mobility service.

On-demand Transportation Platform

Adaptive Smart Mobility in Alentejo

Mobility as a Smart Service in Alentejo

- The user initiates the **trip** through a request (web platform).
- trip is carried out by **taxis or vehicles of the municipality**.
- vehicles will **only undertake routes** if the service has been **requested** and go to reserved stops combining savings on CO₂ and costs with high coverage levels adapted to the demand specific needs related to access to public services.

TRANSPORTE A PEDIDO

Mobilidade como Serviço | Percursos e Horários | Dúvidas Frequentes | Informações

PLATAFORMA DE MOBILIDADE COMO SERVIÇO DO ALENTEJO - TRANSPORTE A PEDIDO

O seu serviço de transporte público por marcação da Região do Alentejo.

Percurso e Horários

Dúvidas Frequentes

Para Reservar Transporte

Veja Como Reservar

Horário de Atendimento

09:00 a 12:30 dias úteis

COMO FUNCIONA

1. Procure se informar sobre os percursos e horários aqui antes de ligar
2. Ligue para o número de atendimento e reserve o seu transporte
3. Os operadores registam o seu pedido
4. A plataforma processa o seu pedido e otimiza o trajeto
5. O operador telefona-lhe e confirma-lhe a reserva, indicando qual o horário na paragem
6. O pedido com a ordem de serviço é comunicado ao motorista
7. Aguarde pelo transporte à hora e local agendado

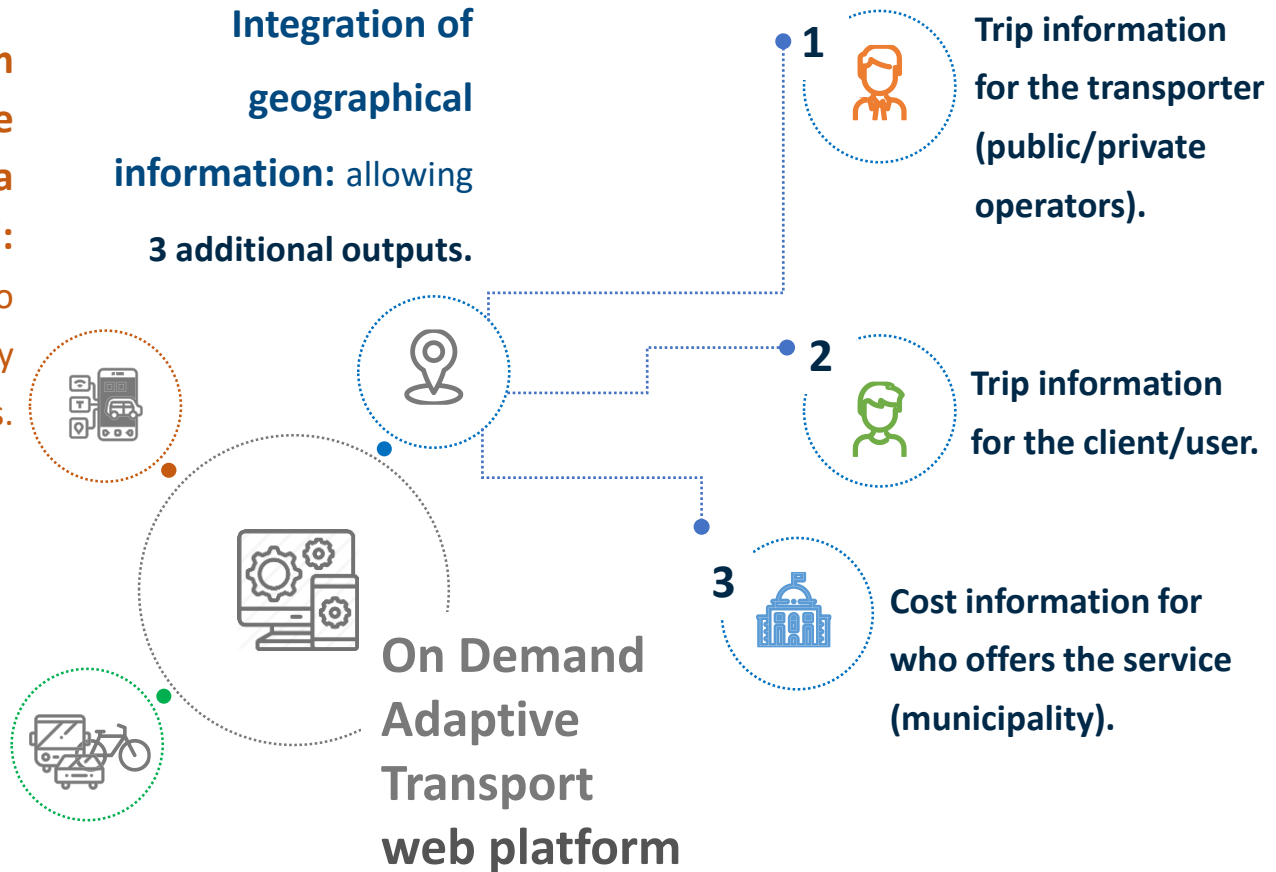
On-demand Transportation Platform

Adaptive Smart Mobility in Alentejo

Innovation

Evolving from “On Demand Adaptive Transportation” to “Mobility as a Smart Service”: adjusted to the user needs, access to public services and territory specificities.

Association of all modes of public transport: users can book a trip with more than one transport mode, for travel between different municipalities.



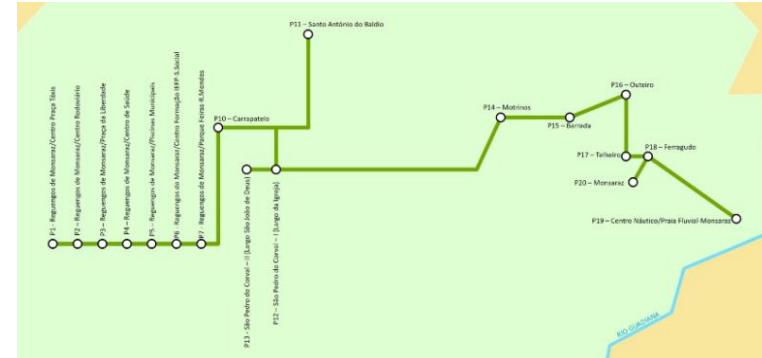
On-demand Transportation Platform

Adaptive Smart Mobility in Alentejo



Results

1. Very good acceptance from the public and the adherent public services.
2. ODAT platform prepared to collect project data and quantify indicators.
3. Online travel reservation and mobile smart application.
4. Integration between public, private and social actors: municipal public service + taxis + school transportation + non-emergency patient transport to health care.



Reguengos	Tarrafal	Quarteira	Quinta	Beja	Silves	Sabão	Alentejo	Faro
Mês (10000) - dia	Mês (15000) - sexta	Tarrafal (18000) - dia	Tarrafal (17000) - sexta					

PARADA	HORARIO
P1 - Reguengos de Monsaraz/Centro Praça Taxis	10:00:00
P2 - Reguengos de Monsaraz/Centro Rodoviário	-
P3 - Reguengos de Monsaraz/Praca da Liberdade	-
P4 - Reguengos de Monsaraz/Centro de Saúde	-
P5 - Reguengos de Monsaraz/Piscinas Municipais	-
P6 - Reguengos de Monsaraz/Centro Formação IEFP-S. Social	-
P7 - Reguengos de Monsaraz/Parque Feiras-R. Mendes	-
P10 - Carrapatelo	-
P11 - Santo António do Baldo	-
P12 - São Pedro de Carval - I (Largo da Igreja)	-
P13 - São Pedro de Carval - II (Largo São João de Deus)	-
P14 - Matosinhos	-
P15 - Barrada	-
P16 - Outeiro	-
P17 - Telheira	-
P18 - Ferragudo	-
P20 - Monsaraz	-
P19 - Centro Náutico/Praia Fluvial-Monsaraz	11:09:00



On-demand Transportation Platform

Adaptive Smart Mobility in Alentejo



Lessons learned

1. Learn and adapt to the characteristics of the pilot municipalities foreseeing to respond to all the Alentejo municipalities associated in the second phase.
2. Guarantee legal support for the current project and for the second phase where all other modes of public transport will be integrated.



serviço disponível no concelho de

MOURA

RESERVAS **300 079 000**

On-demand Transportation Platform

Adaptive Smart Mobility in Alentejo



Authors

Carmen Carvalheira, Vice-president of CCDR Alentejo / Alentejo Regional Authority: carmen.carvalheira@ccdr-a.gov.pt (presenting)

Inês Silva, IrRADIARE Science for Evolution: ines.silva@irradiare.com (contacting author)

Marcos Nogueira, Alentejo/Europe Initiative: marcos.nogueira@alentejo-brussels.eu (co-author)