

# Planning user-centric electromobility: the importance of user acceptance

**3 November**

**14:00 – 15:00**

**(this webinar will be recorded)**



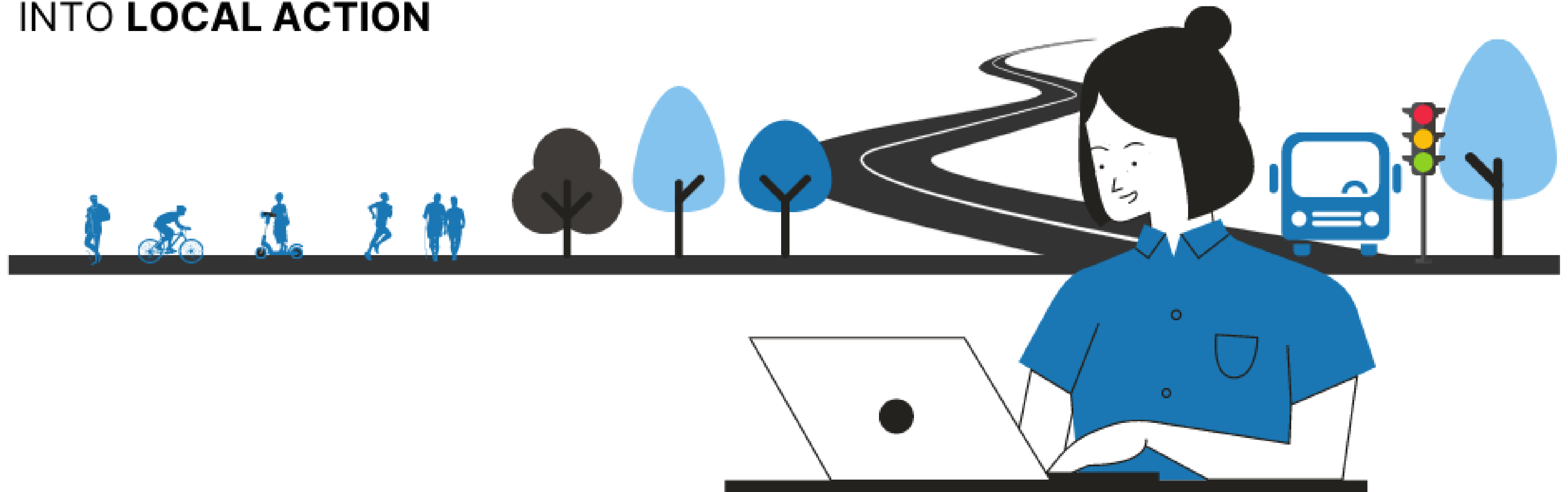
# Mobilising Mobility

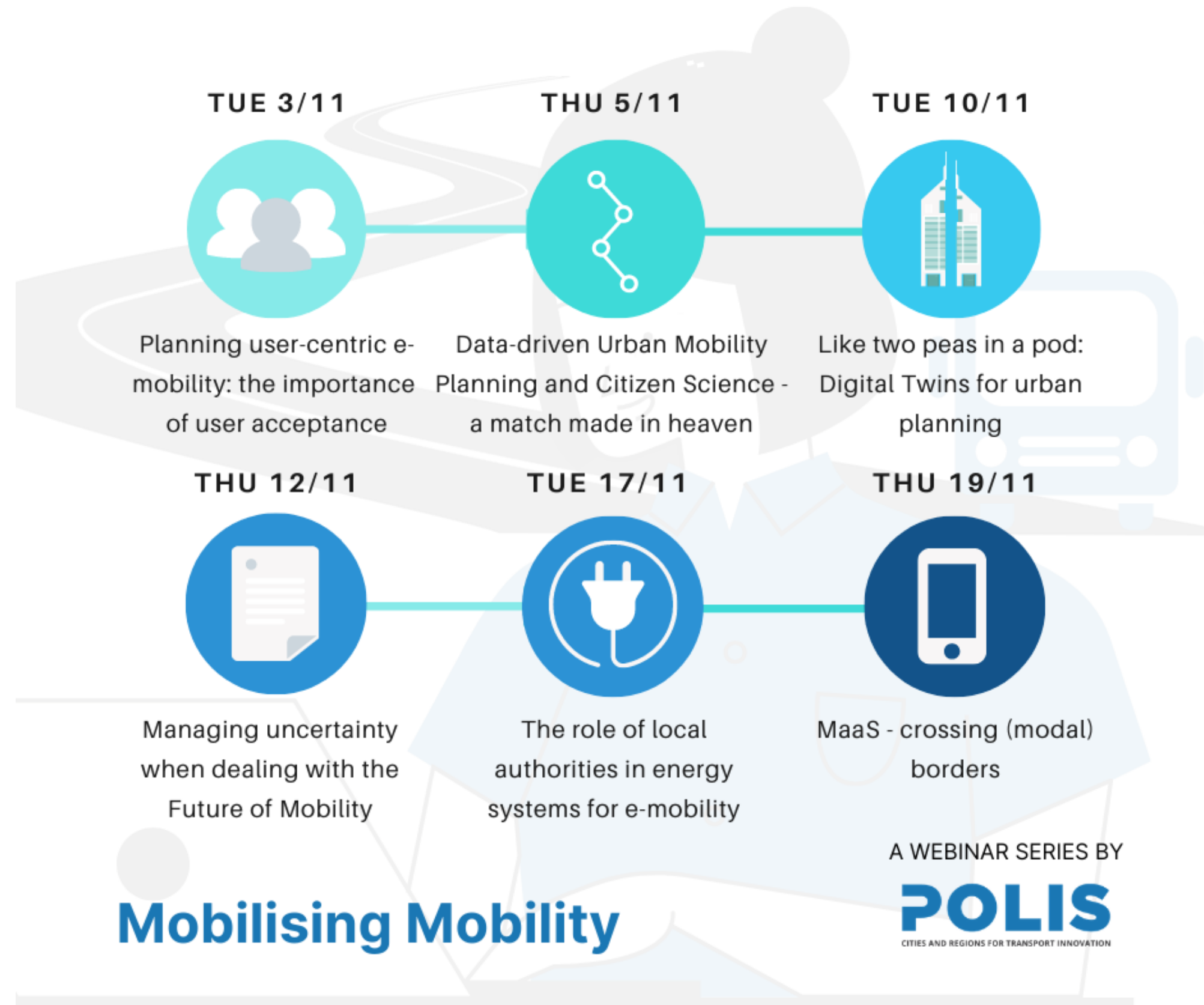
TURNING EUROPEAN TRANSPORT INNOVATION  
INTO LOCAL ACTION

A WEBINAR SERIES BY

**POLIS**

CITIES AND REGIONS FOR TRANSPORT INNOVATION





TUE 3/11



Planning user-centric e-mobility: the importance of user acceptance

THU 5/11



Data-driven Urban Mobility Planning and Citizen Science - a match made in heaven

TUE 10/11



Like two peas in a pod: Digital Twins for urban planning

THU 12/11



Managing uncertainty when dealing with the Future of Mobility

TUE 17/11



The role of local authorities in energy systems for e-mobility

THU 19/11



MaaS - crossing (modal) borders

# Mobilising Mobility

A WEBINAR SERIES BY

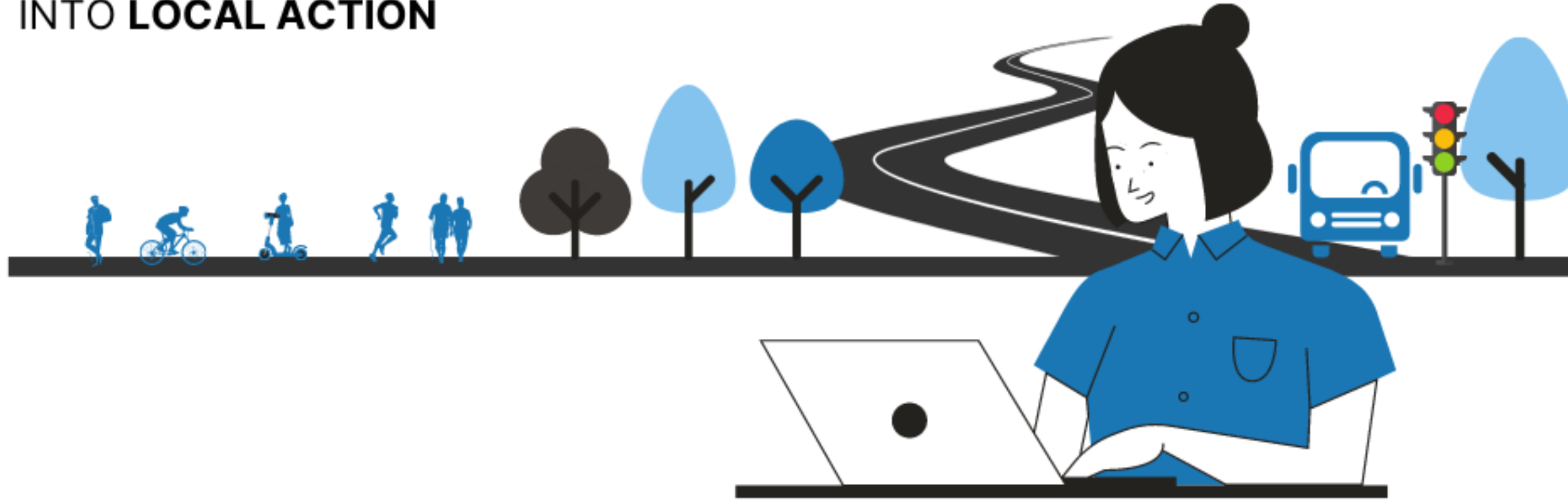
**POLIS**  
CITIES AND REGIONS FOR TRANSPORT INNOVATION

# Mobilising Mobility

TURNING EUROPEAN TRANSPORT INNOVATION  
INTO LOCAL ACTION

A WEBINAR SERIES BY

**POLIS**  
CITIES AND REGIONS FOR TRANSPORT INNOVATION



**Next webinar! →**

**‘Data-driven Urban Mobility Planning and Citizen  
Science: a match made in heaven**

**Thursday, 05 November, 14.00 – 15.00 CEST**

# POLIS

CITIES AND REGIONS FOR TRANSPORT INNOVATION

We are going  
**VIRTUAL!**

POLIS CONFERENCE 2020 | 30 NOVEMBER-3 DECEMBER 2020



# Planning user-centric electromobility: the importance of user acceptance



3 NOVEMBER 2020 - 14:00-15:00 CEST

**Mobilising  
Mobility**



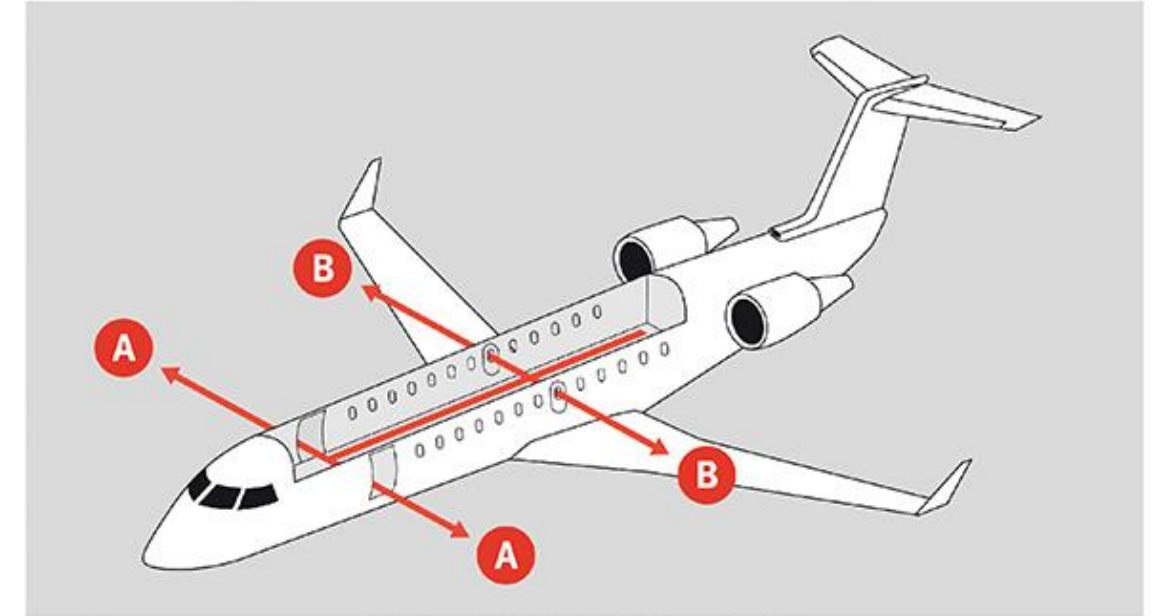
“...on board this webinar...”

This meeting is being **recorded**.

The **recording** will be sent to you.

Please keep microphone **muted** when not speaking.

Use the **Q&A box** to write your questions.

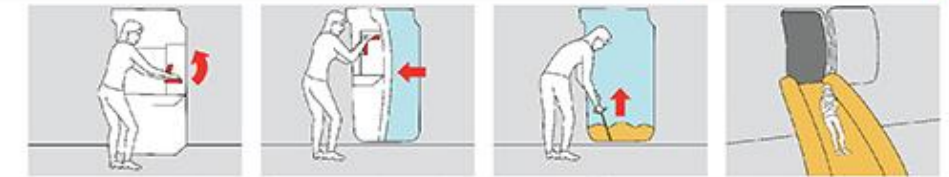


Please take a few moments now to locate your nearest exit / Prosimo vzemite si nekaj trenutkov, in poiščite vam najbližji izhod.

**EVACUATION**  
EVAKUACIJA



**EXIT A**  
IZHOD A



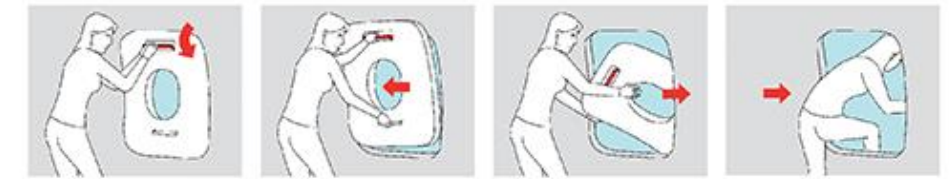
Doors can be opened by moving the handle upwards.  
Vrata odprete s premikom ročala navzgor.

Open the doors by pushing them aside.  
Odprite vrata s potiskom v stran.

Pull the cord to inflate the inflatable slide.  
S potegom na vrv aktivirajte napihljivo blazino.

Leave the plane by jumping on the inflatable slide.  
Zapustite letalo s skokom na napihljivo blazino.

**EXIT B**  
IZHOD B



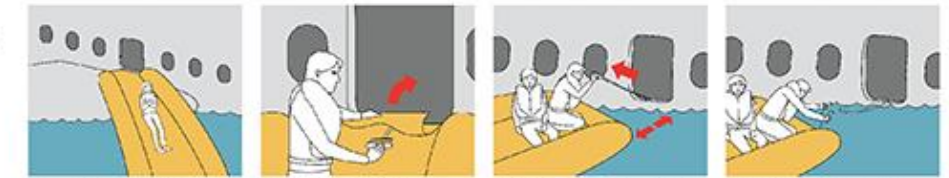
Doors can be opened by moving the handle downwards.  
Vrata odprete s premikom ročala navzdol.

Lift the doors and move them aside.  
Dvignite vrata in jih umaknite v stran.

Throw the doors from the airplane.  
Vrata ločite iz letala.

Exit the airplane.  
Zapustite letalo.

**WATER LANDING**  
PRISTANEK NA VODI



Jump onto the inflatable slide.  
Skočite na napihljivo blazino.

Lift the cover to reveal the handle.  
Vzdignite prekrivalo.

Pull the handle to create a distance.  
Oddaljite se s potegom na ročico.

Cut the rope to detach the raft.  
Za odstranitev črna prerežite vrv.

# Moderator



Lieselot Vanhaverbeke,  
Vrije Universiteit Brussel (VUB)



# Speakers



Matilde Chinellato,  
Eurocities



Juan Gimenez Pla,  
Instituto de  
Biomecanica de  
Valencia (IBV)



Javier Julve,  
Electromaps