

# Introduction to the eHUBS project

Arjen Rodenburg – eHUBS Project Manager  
Polis webinar – 10 September 2020

# Interreg North-West Europe eHUBS

EUROPEAN UNION

European Regional Development Fund

THEMATIC PRIORITY:



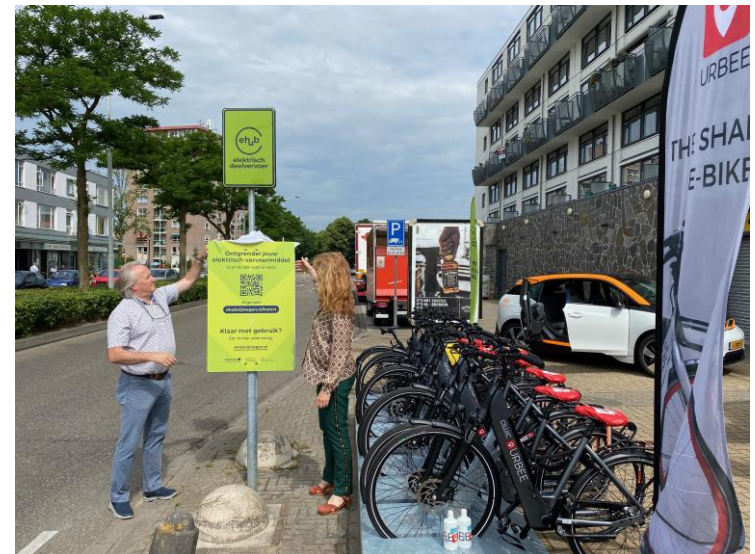
PROJECT  
AREA



Project objectives: eHUBS will demonstrate that shared and electric shared mobility (e-bikes, e-scooters, e-cargobikes, and electric cars) are affordable and attractive alternatives to private cars. eHUBS will contribute to less emissions, less car use, and to the critical mass needed for the business case of electric and shared mobility

# What are eHUBS?

- Physical clusters of shared and electric mobility modes
- Tailored to local conditions & needs: neighbourhoods, city centres
- Can be linked together in a network, as well as connected to the existing PT-network
- Bring together e-bikes, e-cargo bikes, e-scooters and/or e-cars and charging infrastructure
- Can vary in size, type of location, and type of offer
- Integration with transport system through MaaS



# eHUBS outputs

- 92 eHUBS in 7 pilot cities:
  - Amsterdam
  - Leuven, launch end of September
  - Nijmegen / Arnhem, first eHUBS are operational
  - Manchester
  - Dreux
  - Kempten
- 2,400 Shared e-bikes, e-cargobikes (and other LEV's) + 670 shared EV's
- Toolkit for other cities to implement eHUBS
- Evidence that eHUBS contribute to less cars and related reduced emissions



# Partnership



**7 pilot cities, 2 e-mobility providers,  
3 universities, 4 network organisations**

Additional shared mobility providers will be selected by the involved cities, mostly through tenders

# Intermediary results

- State of the art report on shared e-mobility
- Heat maps based on data analysis
- Technical and functional requirements
- Joint methodology to select locations
- Strategic and operational plans per city
- Ten recommendations to stimulate the uptake of shared electric mobility hubs.
- Prototype of a Service Level Agreement
- Report identifying 5 prototypes of business models for eHUBS
- Contribution to standard API (TOMP)
- First eHUBS operational (Nijmegen / Arnhem / Leuven)
- Questionnaire in pilot cities with some first insights: to be addressed by TU Delft + University of Newcastle

## More information

Website: <https://www.nweurope.eu/projects/project-search/ehubs-smart-shared-green-mobility-hubs/>

Linkedin: <https://www.linkedin.com/company/ehubs-nwe/>

Twitter: [https://twitter.com/eHUBS\\_NWE](https://twitter.com/eHUBS_NWE)

Newsletter: sign up!

