

An aerial photograph of a large crowd of people, many wearing yellow and black vests, forming a human pyramid on a paved plaza. The plaza has a geometric pattern of light and dark tiles. In the background, there are trees, a bench, and a small red and green structure.

# Achievements in Kruševac during EUROPEAN MOBILITY WEEK 2019

- Jelena Nikolić, Architect  
Advisor for sustainable urban mobility  
and energy efficiency
- City of Kruševac, Serbia

**POLIS** webinar series  
Campaigns to support zero-emission mobility solutions

15 September 2020

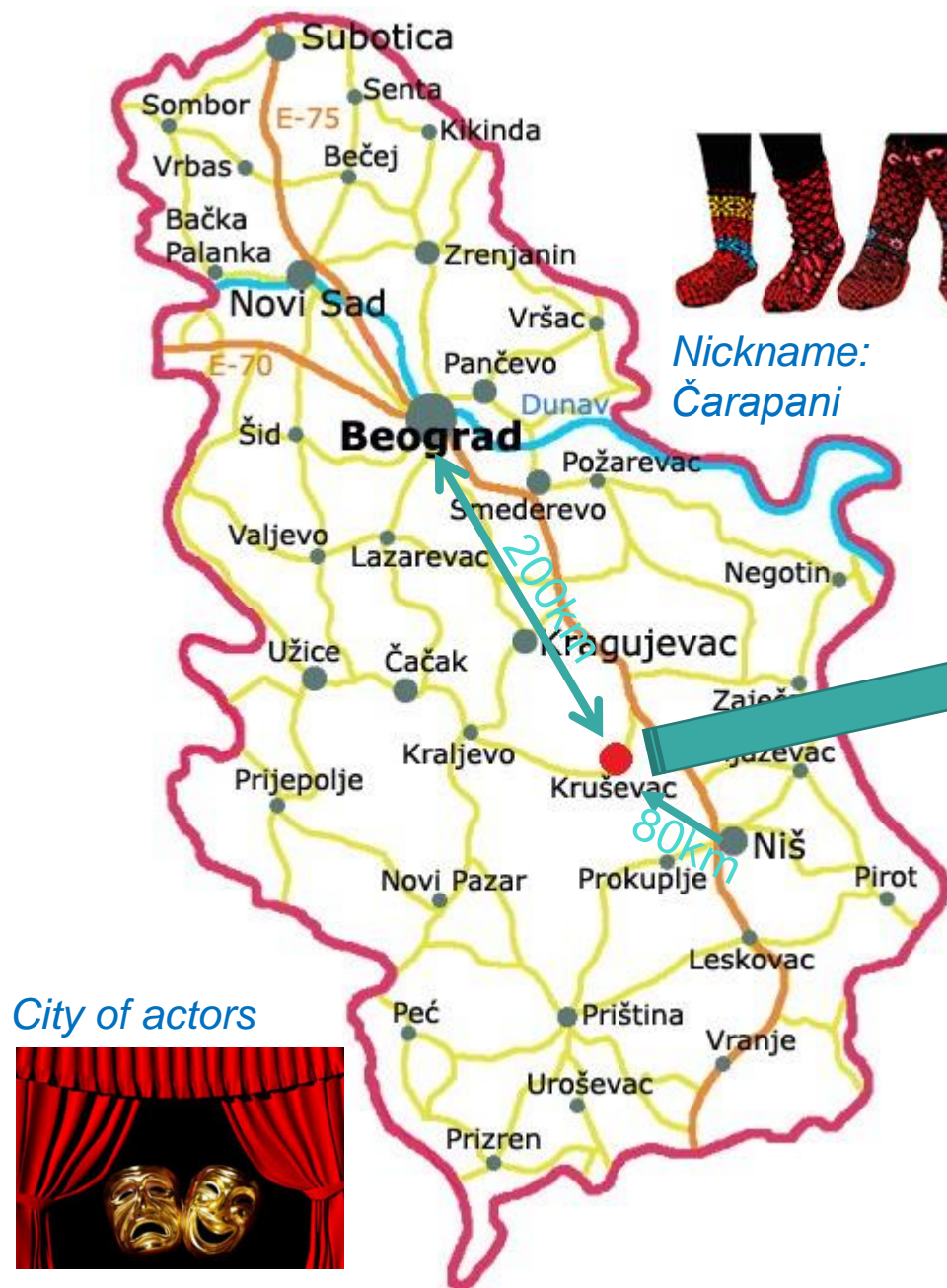
# -INFORMATION ABOUT CITY-



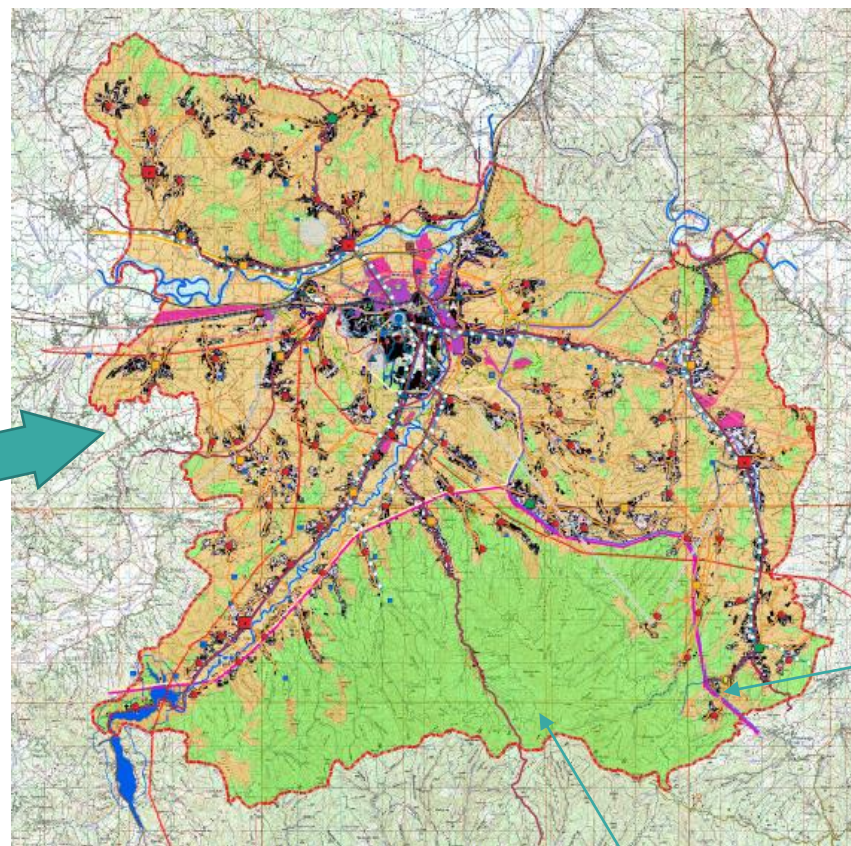
City of Kruševac, Serbia



Nickname:  
*Čarapani*



City of actors



[www.krusevac.rs](http://www.krusevac.rs)

Mountain  
Jastrebac



- Established 1371.
- Medieval capital
- Medium-sized city
- 101 settlement
- 854 km<sup>2</sup>
- 127.429 inhabitants
- 81.399 inhabitants in Urban and 11 suburban settlements (63%)

Ribarska Spa





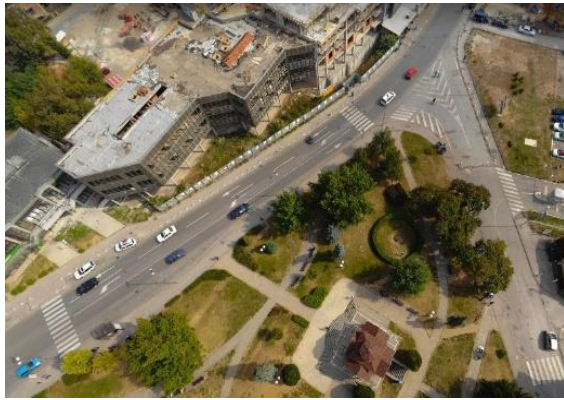
Permanent measures 2019



Reconstruction of Kostrunica square and Dositejeva street:  
on street parking lots in two streets were removed, part of the street is closed and turned into a park (extension of the square and park area), construction of round about on junction, creation of bike lanes on both sides, improvement of the sidewalks, new pedestrian paths, new greenery, new urban furniture



Before / After



Before / After



## Permanent measures 2019

Reconstruction of Balkanska street included following works:  
renovation of sidewalks (both sides, new pavement),  
reconstruction of road surface,  
creation of bike lanes (both sides),  
improvement of greenery,  
reconstruction of junctions and  
construction of roundabouts, instead of traffic lights.



Before / After





Before / After



Before / After





## Visibility of all road users



## Activities for all



Around 50 local partners, incl. Association of diabetics and Association of Persons with Disabilities

Temporary measure: closing the main street in the city center for motor traffic, every day from 18-22h

- 2015 - 7 days during the European Mobility Week (16-22 September)
- 2016 - during the summer of July, August to September 22
- 2017 - from 1 June to the beginning of October
- 2018- from 1.May til 1.October
- 2019- from 19 April til 10 October



*Everyday situation- street used by vehicles*



*Play out street*

#### Effects:

- Positive responses of citizens
- Raising awareness about the public space use
- The problem of street parking
- Moving the route of the bus lines and the bus stop
- city center will have a new look in 2021

## Video EMW



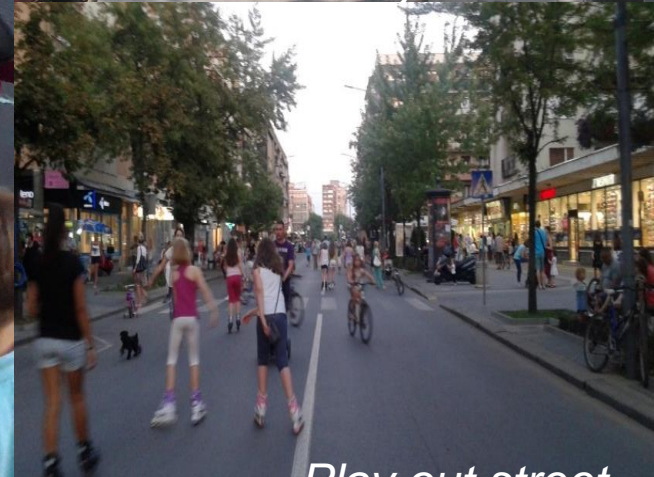
Public participation



Car-free day



street used by vehicles



Play out street





August 2020



August 2020



August 2020



# Activities in EMW 2020



New public space



New pedestrian bridge

- Survey in all cities
- The ROADPOL Safety Days (EDWARD)
- Cycling tours



New cycling infrastructure



campaign



2 new PT lines- E-buses- free for citizens and tourists

**Hvala!**  
**Thank you!**

City of Kruševac, Serbia  
**Jelena Nikolić, Architect**  
Advisor for sustainable urban mobility  
and energy efficiency

[jelena.nikolic@krusevac.rs](mailto:jelena.nikolic@krusevac.rs)  
[nikolicjelena@gmail.com](mailto:nikolicjelena@gmail.com)  
[LinkedIn](#)

[Video EMW](#)

