

27-28 November 2019, Brussels

## SESSION 3G. WHAT DO PEOPLE WANT? WHAT DOES THE CITY NEED?

# “SUMP IN ROME: THE PROCESS OF CO-CREATION AND ITS APPROVAL”



**Ing. Fabio Nussio**  
International Co-operation  
Mobility Agency of the City of Rome



**PUMS**  
Piano Urbano  
della Mobilità  
Sostenibile



ROMA 



**RISORSE**  
PER ROMA *spa*



# Mid term infrastructural measures – SUMP in Italy

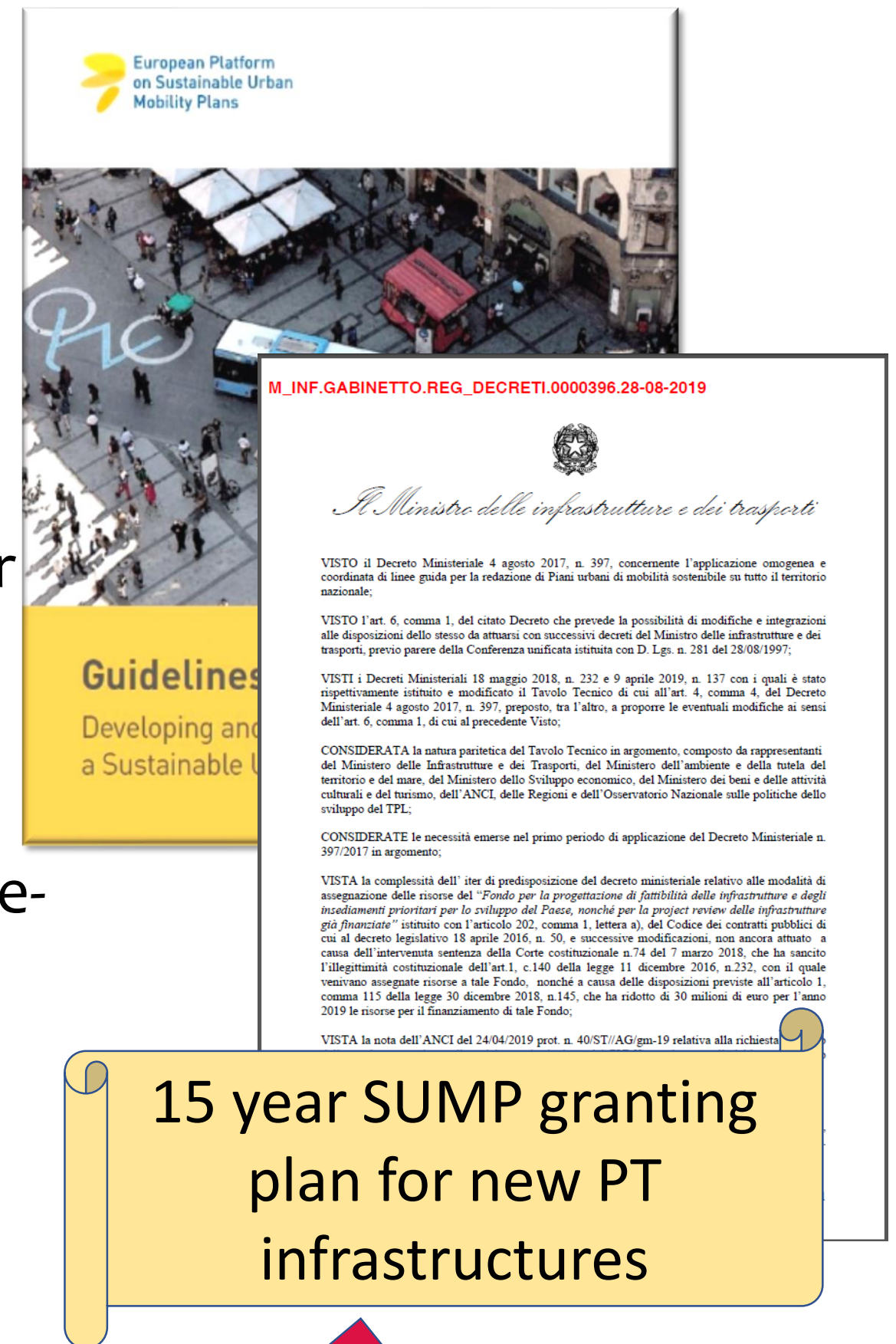
2

EU provides at Local level Best Practice and Guidelines:

- **CIVITAS** and **ELTIS** best practice exchange;
- *Guidelines for Sustainable Urban Mobility Planning (SUMP)*, now in the 2<sup>o</sup> edition
- **Action Plan for Urban Mobility**
- **Europe on the Move**: Package of measures for a more connected and less polluting mobility

**Italian Ministry of Transport (MIT)** set a co-ordinated table with local government and stakeholders:

➔ adoption in 2017 of the **National Guidelines for SUMP in Italian Cities**, revised in 2019, where the plan in each city need to be approved **within 2020**.





## Rome PUMS guidelines adoption and publication in 2017

“Fixed Intervention Plan”: Definition of a priority list

**Opening of the portal for citizen participation**

Analysis of the proposals received in the listening phase

1st Listening phase



Participation process with organization of events on each relevant topic

Building scenarios for each Component Plan

Checking the General and Specific Objectives Plan

**SUMP Document drafting**

Official Participation phase.

**Adoption and publication of the SUMP – 8/19**

2nd Listening phase

Consultation phase



Strategic Environmental Impact Assessment (EIA) – To be approved by Region

Official Observation phase - ending in November 2019

Integration of the approved observations and EIA feedback inside the SUMP

**SUMP final approval by Local Authority**

Overcome the present “traffic approach” towards “Plan for people” with:

- **Improve integration** of mobility resources
- **Multimodality** & **reduction of private car ownership**
- **Safety** levels increase for PT and road traffic
- **Public transport** capacity increase
- **Soft & sharing mobility** increase (car pooling, car, bike, van sharing, mobility manager activities)
- Less **congestion** and atmospheric & acoustic **pollution** - energy consumption reduction – **CO<sub>2</sub>**





# PARTICIPATION APPROACH: [WWW.PUMSROMA.IT](http://WWW.PUMSROMA.IT)

## 1<sup>a</sup> LISTENING PHASE

18 SEPTEMBER  
2017

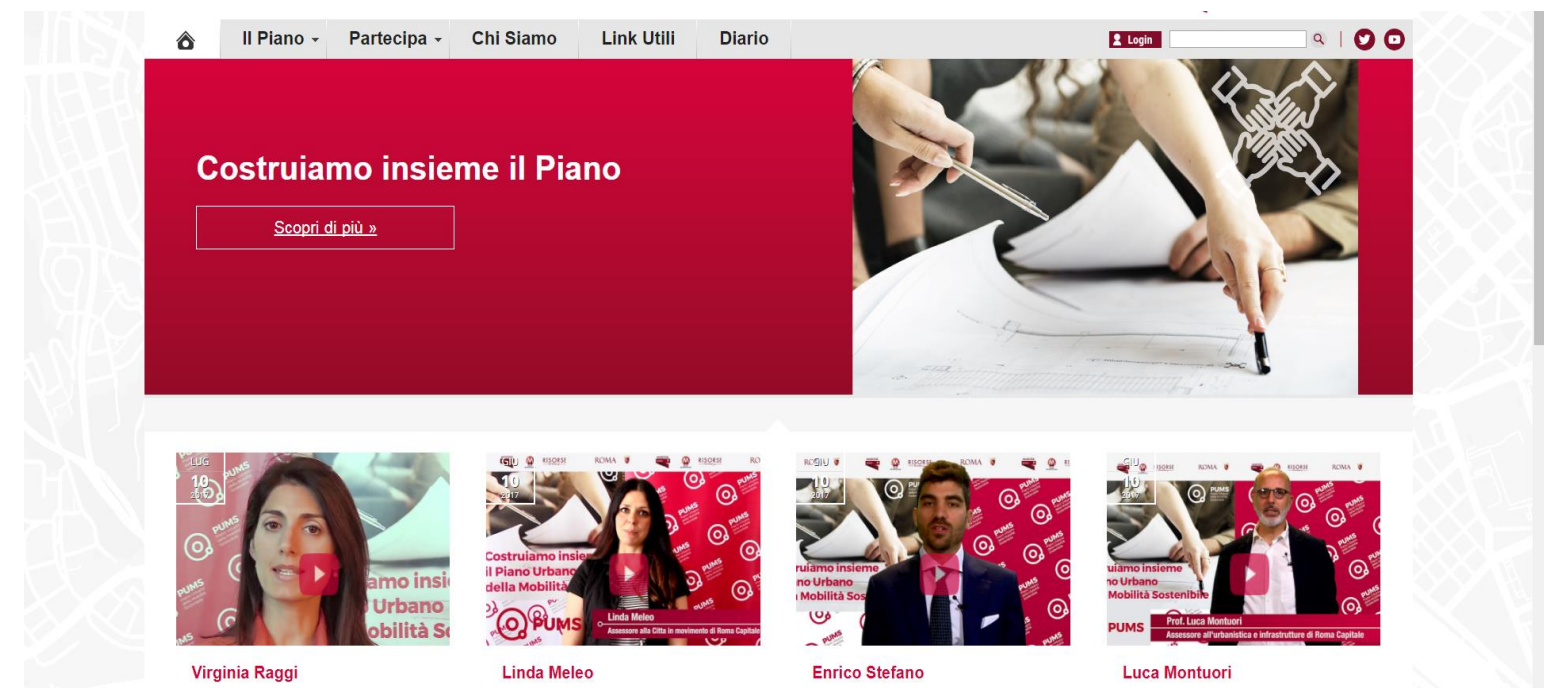
Listening phase

28 FEBRUARY  
2018

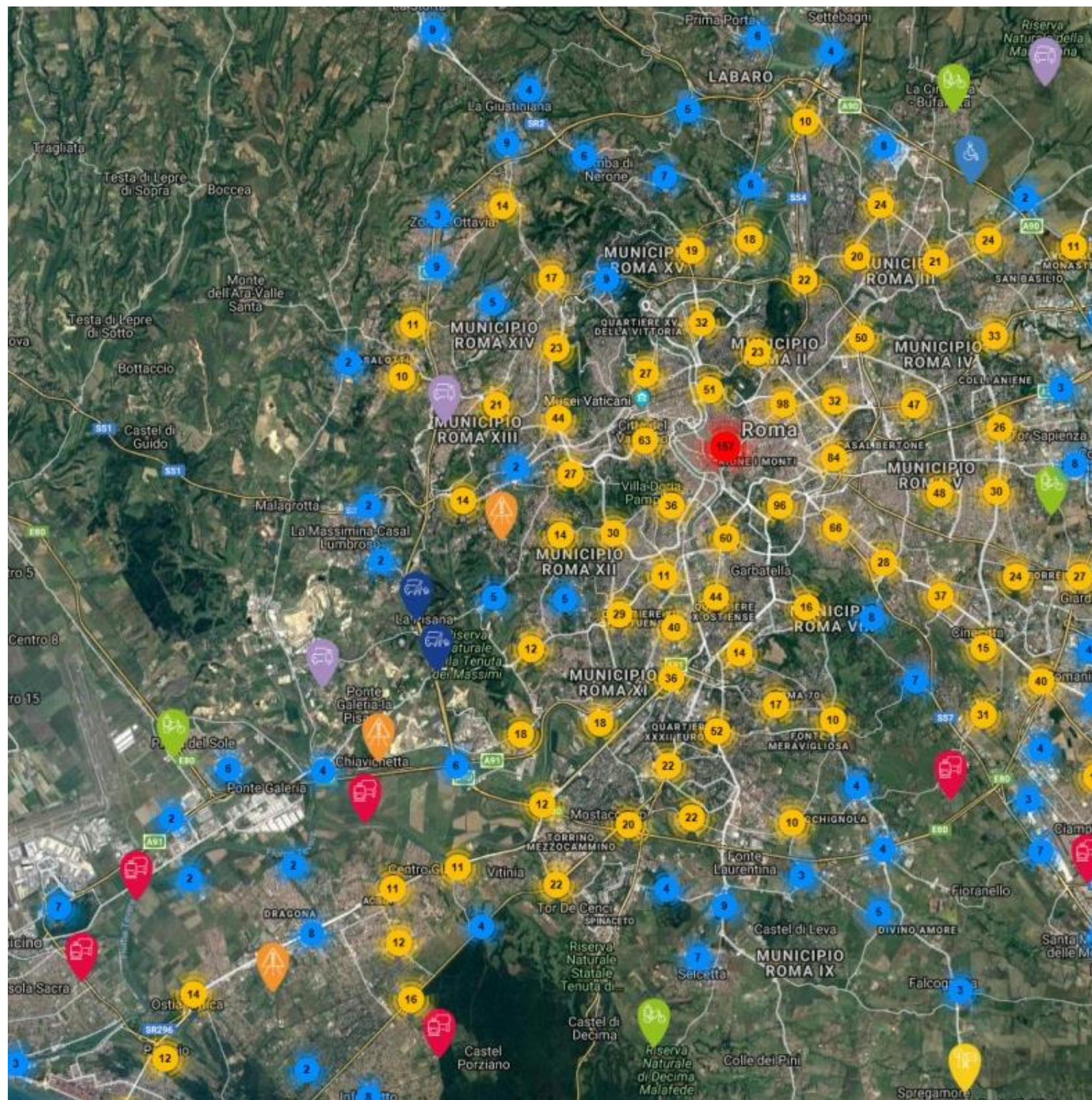
At the same time:

- **Public meeting** in City District
- **Interview** and analysis  
(published on the Portal)
- **account** on *social channel*

*Twitter@PumsRoma*







## 1st LISTENING PHASE

### The figures

RECEIVED PROPOSALS	4,106
PUBLISHED PROPOSALS	2,668
COMMENTS MADE	3,132
CONTACTS	43,651
VOTES CAST	28,123
MEAN TIME	4,3 MIN

**All the proposals have been examined and each one has been answered**





## Rome PUMS guidelines adoption and publication in 2017

“Fixed Intervention Plan”: Definition of a priority list

**Opening of the portal for citizen participation**

Analysis of the proposals received in the listening phase

1st Listening phase



Participation process with organization of events on each relevant topic

Building scenarios for each Component Plan

Checking the General and Specific Objectives Plan

**SUMP Document drafting**

Official Participation phase.

**Adoption and publication of the SUMP – 8/19**

2nd Listening phase

Consultation phase



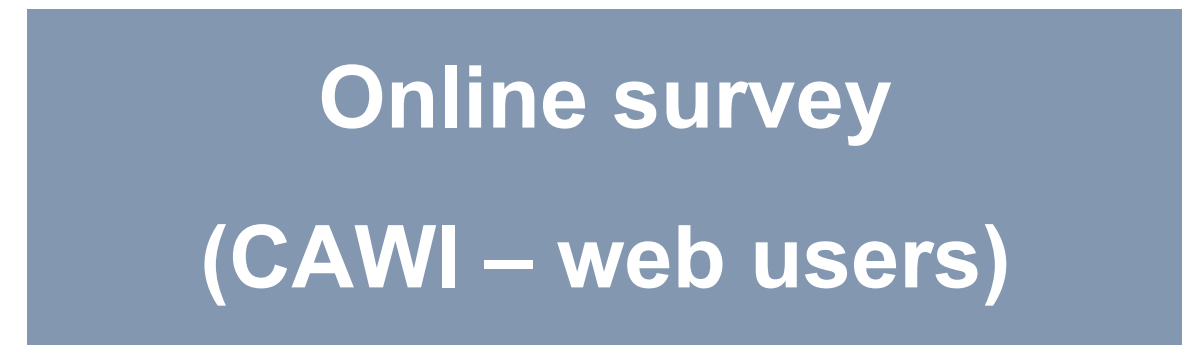
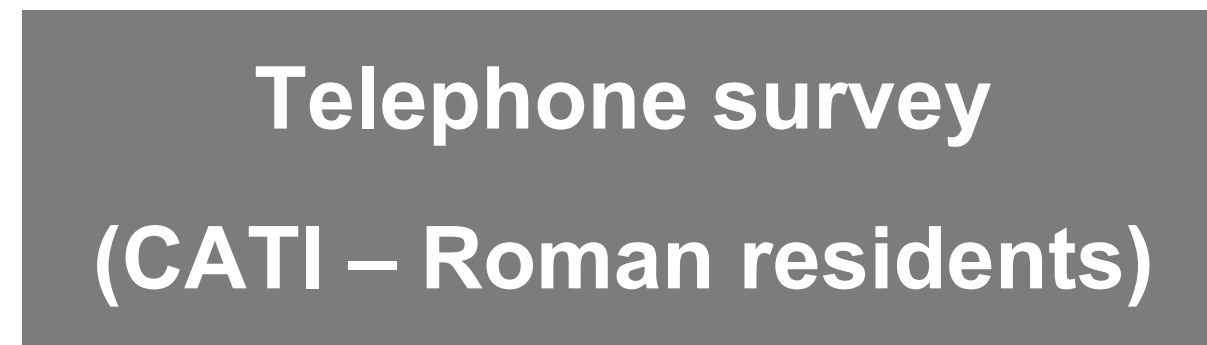
Strategic Environmental Impact Assessment (EIA) – To be approved by Region

Official Observation phase - ending in November 2019

Integration of the approved observations and EIA feedback inside the SUMP

**SUMP final approval by Local Authority**

## 2<sup>a</sup> LISTENING PHASE



2.000

+

5.415

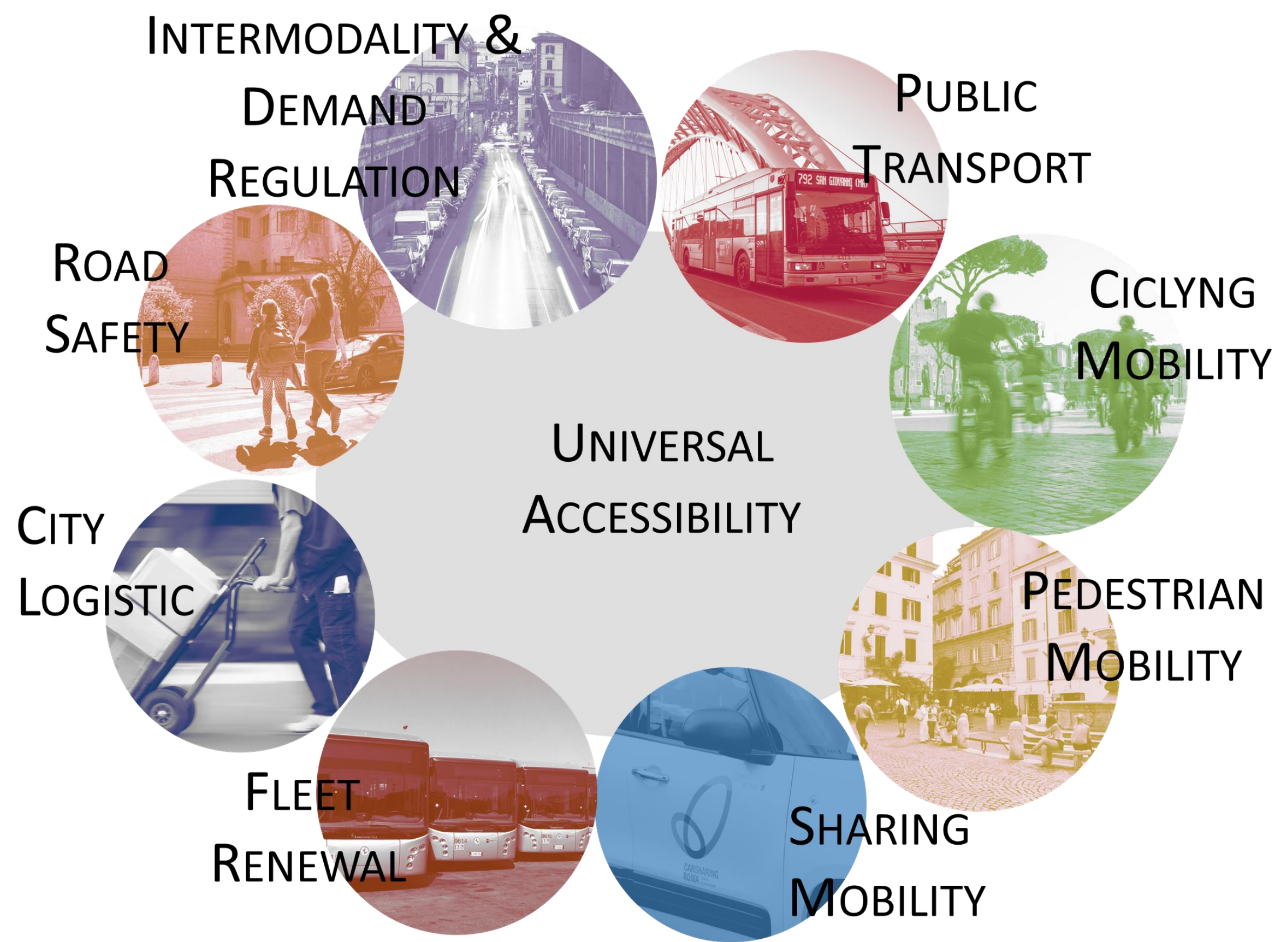
6.814 contacts



## RANKINGS

TOP 3	BY PHONE	ON LINE
1	Reduce the <b>accident rate</b>	Strengthen <b>infrastructure for LPT</b>
2	Reduce <b>traffic jams and congestion</b>	Reduce <b>traffic jams and congestion</b>
3	Reduce polluting <b>emissions</b>	Promove urban <b>ciclyng</b>

# SUMP Proposal: MAIN COMPONENTS



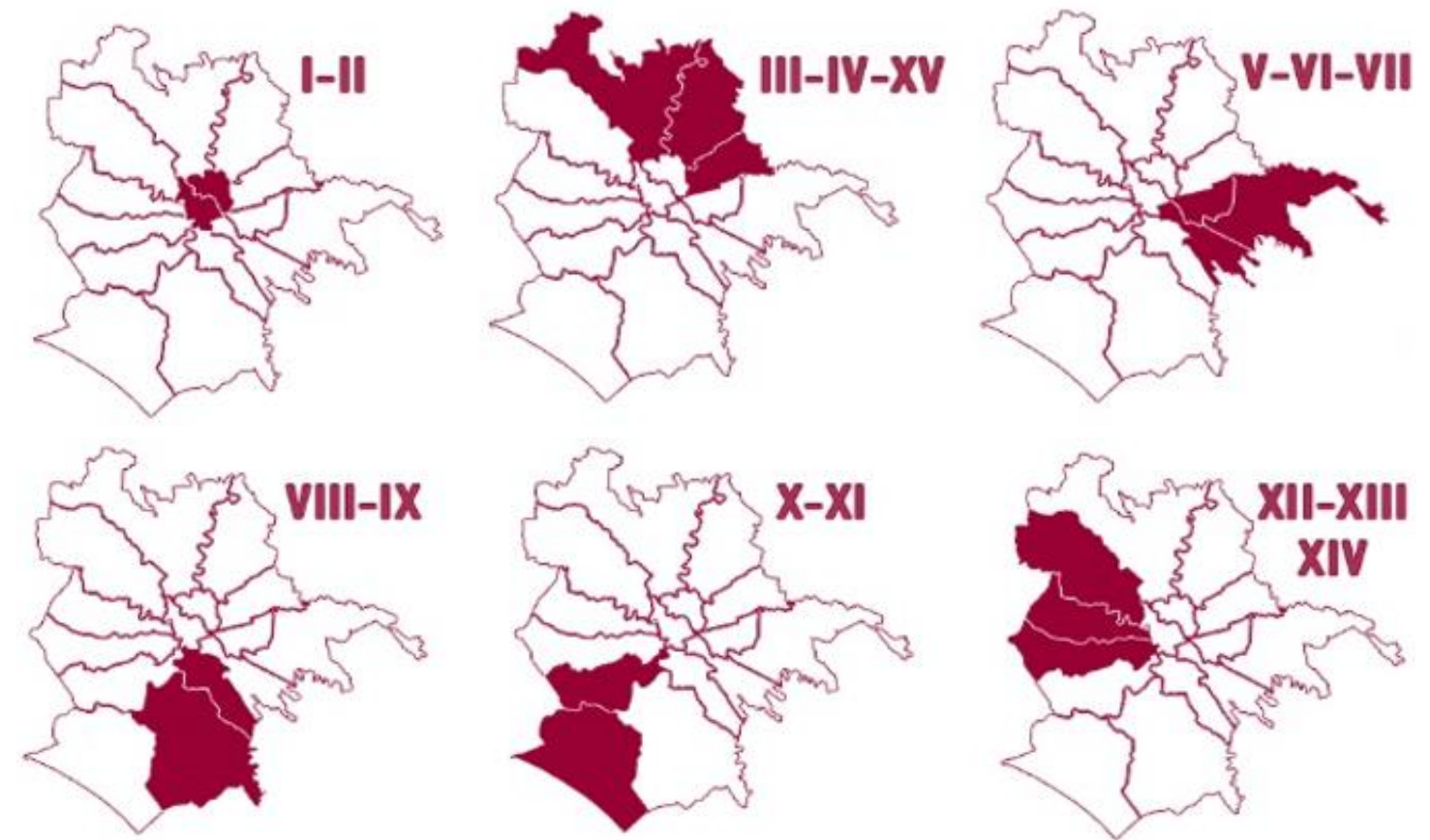


# CONSULTATION PROCESS on the SUMP PROPOSAL - 1

## BUILDING TOGETHER FINAL SUMP SCENARIO: MARCH-MAY 2019

This municipal Consultation involved City Users, Associations, Stakeholders, Business Owners, City Districts representants.

The municipal area was divided into **six** territorial areas defined by the union of two or three Municipalities and, for each area and **three meetings** have been held.



Institutional stakeholders (**trade unions**, the **business owners** categories, commerce and tourism association and the **Municipality Commissions**) were also involved in other meetings.

# CONSULTATION PROCESS on the SUMP PROPOSAL - 2

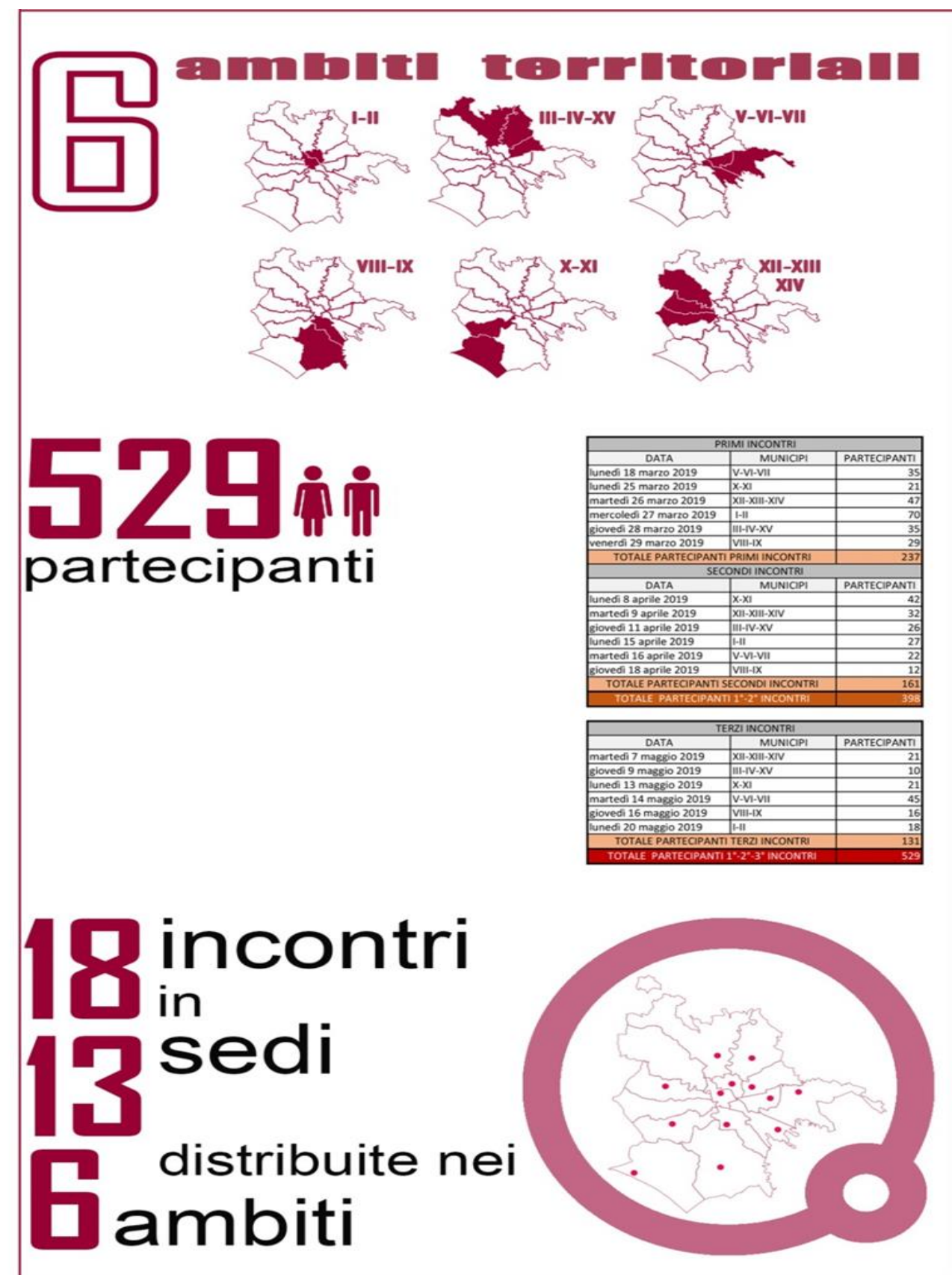
**First meeting:** illustration of SUMP proposal and its projects by theme, first questions and considerations;

## In the second meeting

SUMP by geographical area.  
Compilation of specially prepared forms and presentation of alternative choices by the citizens in the plenary session.

## The third meeting

Illustration of the results of the first two meetings and sharing of the results also through their graphic representation





# CONSULTATION PROCESS on the SUMP PROPOSAL - 3

The **proposals and observations** have been summarized on tables and tables and classified into **5 themes** relating to public transport, intermodality, cycling, environmental islands and shared transport / logistics / security detecting some macro-needs:

- improve the **quality and supply of public transport** - increase capacity, especially by strengthening the metropolitan and railway lines, with interventions on offer side and **intermodality**;
- Improve **road safety**
- complete itineraries and routes dedicated to **soft mobility**, especially **cycle-pedestrian** in order to improve the network effect and safety.

Participation path SUMP Proposal	N° Proposals	%
Public Transport	135	45%
Intermodality	36	12%
Ciclyng	76	25%
Env & pedestrian Areas	20	7%
Sharing+Logistic+Safety	34	11%
<b>TOTAL Proposal</b>	<b>301</b>	<b>100%</b>

# THE APPROVED SUMP (D.A.C. 60/19 – AUGUST 2, 2019)

DOCUMENTS AVAILABLE ON  
[HTTPS://WWW.PUMSROMA.IT/PARTECIPA/DELIBERE  
-DI-GIUNTA/](https://www.pumsroma.it/partecipa/delibere-di-giunta/)



**PUMS**  
Piano Urbano  
della Mobilità  
Sostenibile



ROMA



**RISORSE**  
PER ROMA *spa*



# REFERENCE SCENARIO: Rail PT Network





# SUMP SCENARIO: Whole Rail PT Network

16



legenda

**M** linee metropolitane

- A** Anagnina-Monte Mario FS
- B** Casal Monastero-Laurentina
- B1** A1 Scambiatore Nord-Laurentina
- C** Monte Compatri/Pantano-Farnesina
- D** Ojetti-EUR Agricoltura
- E** Piramide/Ostiense-Ostia C.Colombo
- F** Flaminio/Piazza del Popolo-Montebello

**T** linee tramviarie

- 1** Stazione Termini-Auditorium/Città della Musica
- 2** Flaminio/Piazza del Popolo-Vigna Clara
- 3** Cornelia-Ponte Mammolo
- 4** Togliatti/Abellie-stazione Trastevere
- 5** piazza dei Gerani-stazione Termini
- 6** largo Preneste-stazione Ostiense
- 7** Basilica S.Paolo-Ponte Mammolo
- 8** largo Preneste-Casaletto
- 9** piazza dei Gerani-piazzale Clodio
- 10** Ponte Mammolo-Basilica S.Paolo
- G** metroltram Giolitti-Scambiatore A1 Sud
- H** metroltram Torre Angela-Anagnina

**FL** linee ferroviarie regionali

- 1** Orte-Fiumicino Aeroporto
- 2** Roma Tiburtina-Tivoli-Avezzano
- 3** Roma Tiburtina-Cesano-Viterbo
- 41** Roma Termini-Frascati
- 42** Roma Termini-Albano Laziale
- 43** Roma Termini-Velletri
- 5** Roma Termini-Civitavecchia-Grosseto
- 6** Roma Termini-Cassino
- 7** Roma Termini-Minturno/Scauri
- 8** Roma Termini-Nettuno
- 9** Roma Flaminio/Piazza del Popolo-Viterbo
- 10** Anello metropolitano

**EX** servizio espresso Termini-Fiumicino Aeroporto

capolinea bus regionali

bus per aeroporti

treni nazionali

parcheggio di scambio

limite di validità della tariffa urbana Metrebus

Metro & railways: + 45 km;  
Cableways, other: +10 km;  
Tranway branches: + 58 km;  
New stations/stops: 185



# SUMP SCENARIO: PT Network

17

## *First interventions for the next 5 years*

SHORT TERM < 5 anni	Financing request
Cableway Battistini-Casalotti	2018
Cableway Villa Bonelli-Magliana-Eur Magliana	2018
Tram branch Verano-Stazione Tiburtina	2018
Tram connection Piazza Vittorio-Largo Corrado Ricci Fori Imperiali/Piazza Venezia	2018 2019
Tram Line Roma-Giardinetti da Termini a Tor Vergata	2018
East tangential tramway link Subaugusta-Viale Palmiro Togliatti-Ponte Mammolo	2018
Tram connection Stazione Termini-Piazza Venezia-Piazza Risorgimento	2019
Upgrading and upgrading of the railway line Roma Lido and transformation into Metro E	
Upgrading and upgrading of the railway line Roma Nord and its transformation into Metro F	
New stations Torrino e Giardini di Roma on Roma-Lido	
Improvement of station node Ostiense-Piramide MB-Porta S.Paolo	
Link Ponte Lungo Metro A- Stazione Tuscolana FL	
Link Libia Metro B1-Stazione Nomentana FL	

# SUMP SCENARIO: Demand Management

18

## Adoption of the C40 protocol - FFFS

"FOSSIL FUEL FREE STREETS" (FFFS) Declaration with two objectives:

- Purchase of **only emission-free PT vehicles starting from 2025**
- Realization of at least one **urban area "with zero emissions"** from transport within 2030

## UVAR in the Railway Ring Area

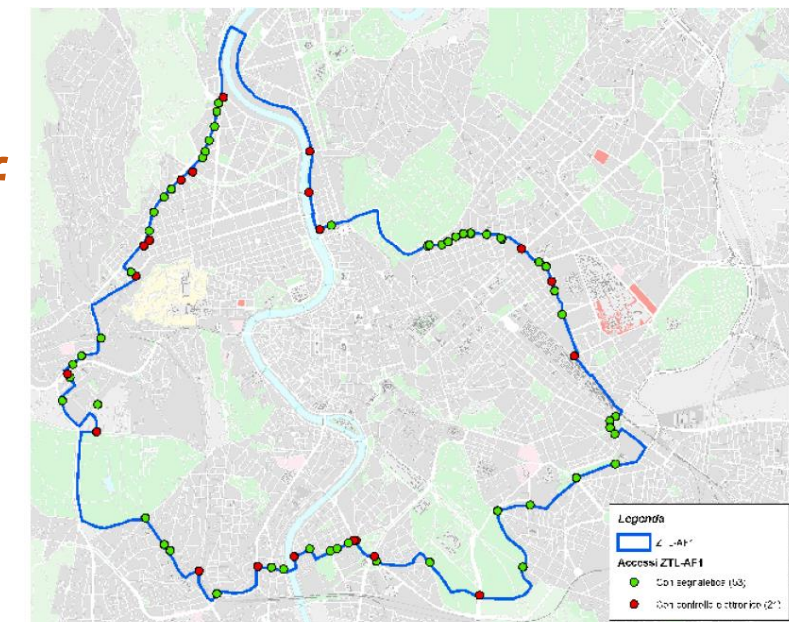
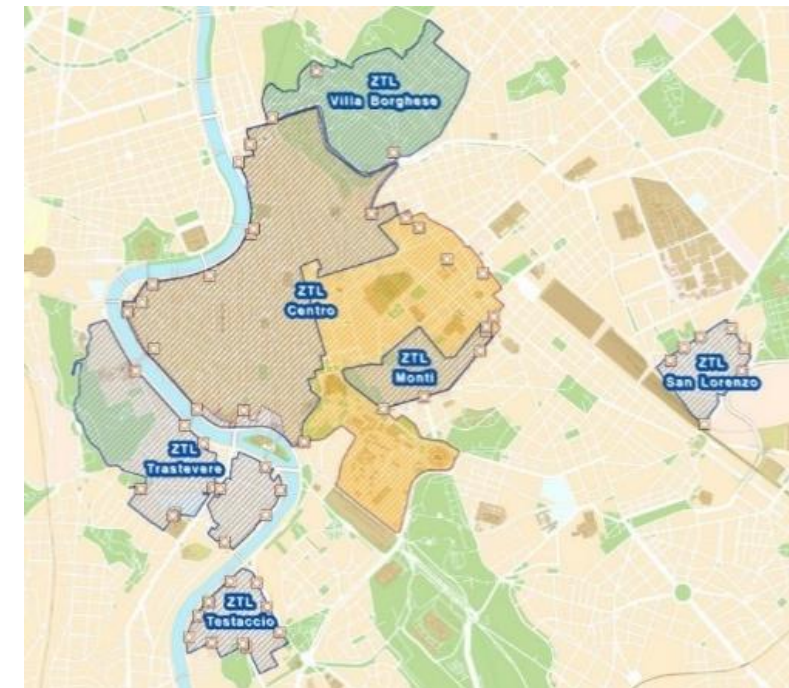
Installation of the **53 gates of the ZTL AF1 - VAM** missing for vehicle control. towards "**Pollution Charge**" model and **MaaS** promotion.

## Policies for on-street parking

Adjustment and strengthening of the the hourly rates, with **reduction of free permits for categories**.

## Upgrading P&R

Extension of the P&R system with new controlled parking areas and extensions of existing ones.





## DEVELOPMENT OF CICLYNG MOBILITY

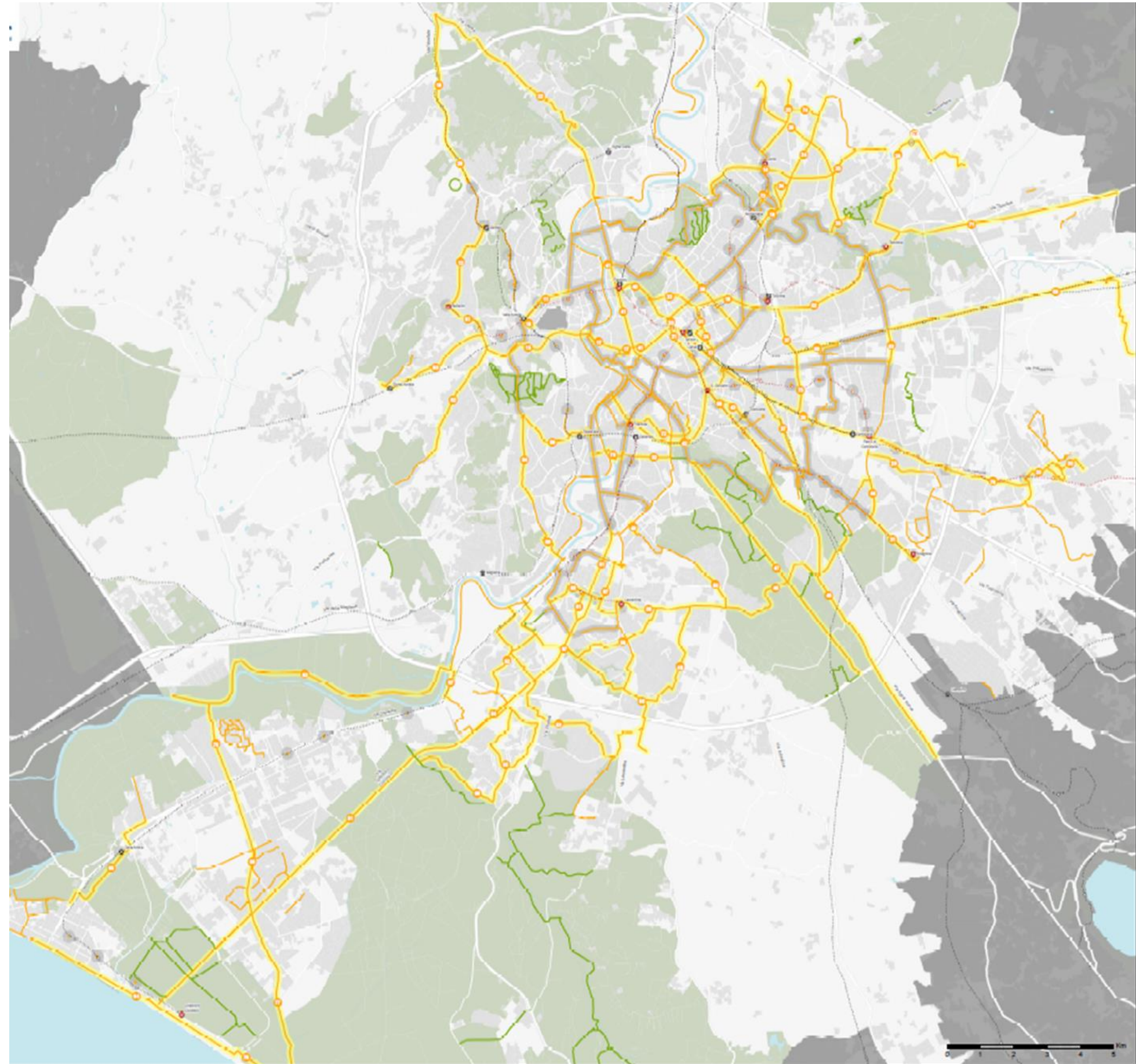
**SUMP Scenario: 304 km of new cycling routes**

## DEVELOPMENT OF PEDESTRIAN AND ENVIRONMENTAL AREAS

**SUMP Scenario**

**80 new complex pedestrian and semi-pedestrian areas:**

## SUMP SCENARIO





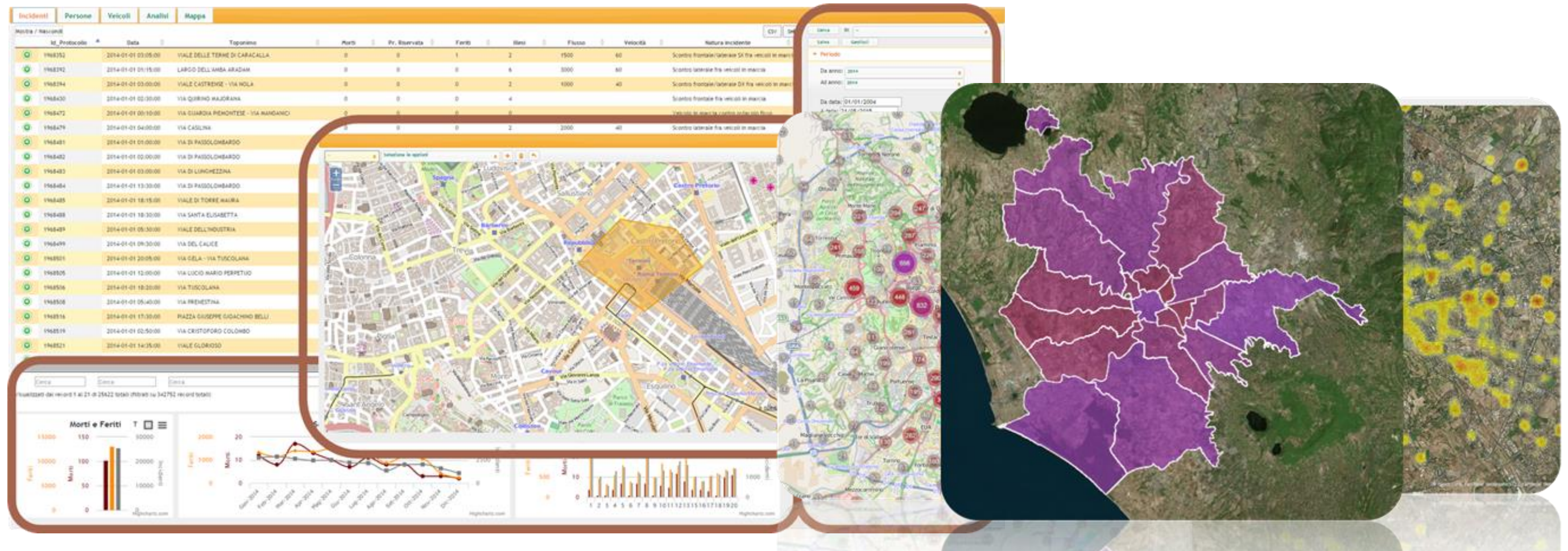
## DEVELOPMENT OF SHARING MOBILITY: SUMP SCENARIO

- Give further impulse **to car / bike / scooter sharing schemes, car-pooling** and taxis towards low environmental impact solutions and rewarding criteria for operators in the external areas of the city
- Favor **Mobility Manager (MM)** soft mobility projects for home-school connection and for Home Work Travel Plans.
- Support adoption of **smart working** in the whole Municipality.

# Road Safety

The dedicated Centre is now expanding to gather and process all accidents data of the Urban Police (approx 30.000 record/yr).

According to **safety priorities and critical situations**, interventions are planned **with increasing investment each year**.



## TOPIC

**ROAD SAFETY Management**

## Present situation

129 deaths;  
17.306 serious injuries

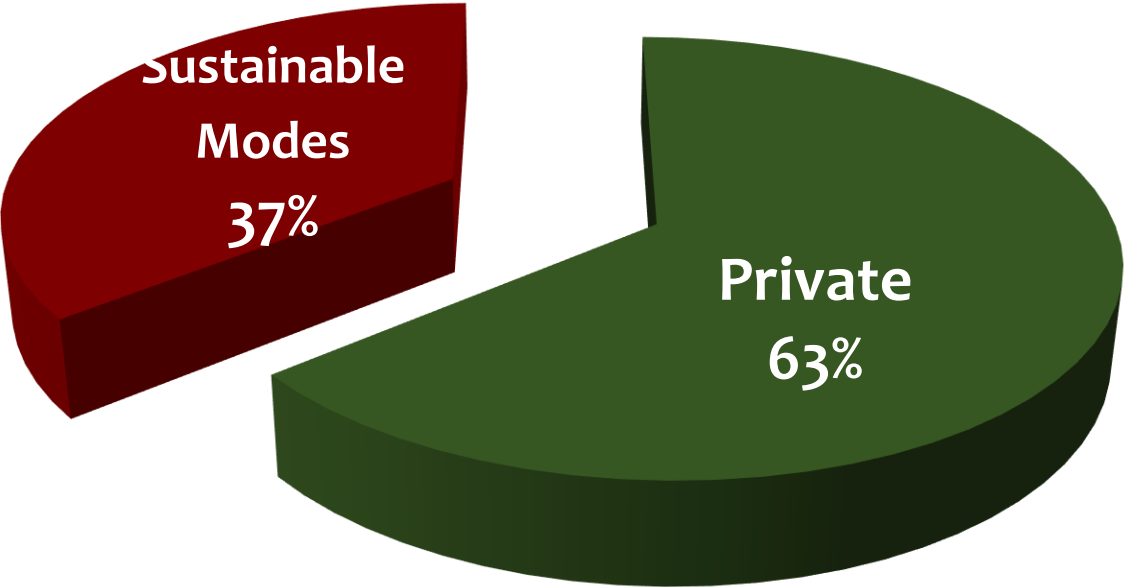
## SUMP Scenario

- 50% deaths;  
- 50% serious injuries

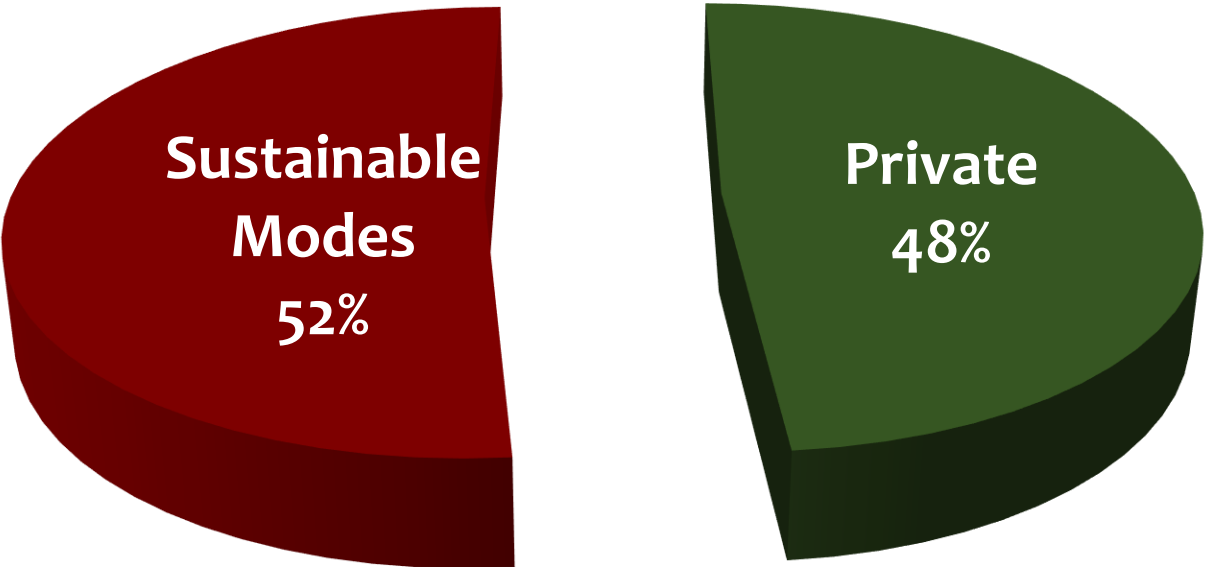


MODAL CHANGE

Reference Scenario (SR)



SUMP Scenario (SP)





Rome PUMS guidelines adoption and publication in 2017

“Fixed Intervention Plan”: Definition of a priority list

Opening of the portal for citizen participation

Analysis of the proposals received in the listening phase

1st Listening phase



Participation process with organization of events on each relevant topic

Building scenarios for each Component Plan

Checking the General and Specific Objectives Plan

**SUMP Document drafting**

Official Participation phase.

2nd Listening phase

Consultation phase

**Adoption and publication of the SUMP – 8/19**



Strategic Environmental Impact Assessment (EIA) – To be approved by Region

Official Observation phase - ending in November 2019

Integration of the approved observations and EIA feedback inside the SUMP

**SUMP final approval by Local Authority**



27-28 November 2019, Brussels

# Thank you for your attention!



International Co-operation  
Mobility Agency of the City of Rome  
[fabio.nussio@romamobilita.it](mailto:fabio.nussio@romamobilita.it)

