



# On-street European Standard Parking Award





## The European Standard Parking Award – Parking in Europe

### Off-street



26,1 M  
parking  
spaces

“Europe 2013”



Since 2007  
more than **300**  
**ESPA Awards**

### On-street



14,7 M  
parking  
spaces

“Europe 2013”

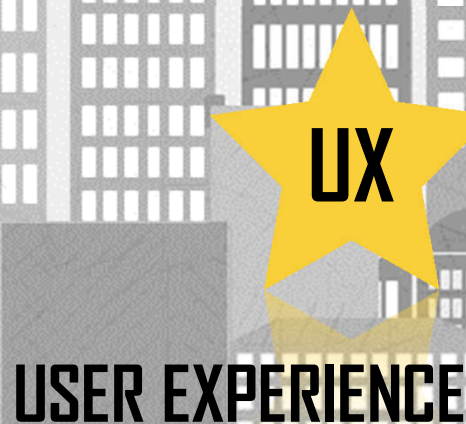


**EPA** has established an award for excellence in **on-street** parking regulation systems. The Award ensures the quality of service in regulated on-street **controlled parking zones** by establishing a set of minimum standards for a good basic quality in structure and services. The standard is to be improved in the future.



## The European Standard Parking Award – On street

Regulation Systems can differ a lot from one location to another across Europe. It's easier to establish a standard for parking structures. We've focused just on main things, looking for quality of each system and also on its impact on mobility.



*Evaluates user experience related to vertical and painting signals, regulation, free parking spaces and attention to the user.*

*Moreover reviews appeals quality, characteristics and process time of appeals.*



## The European Standard Parking Award – On street

Regulation Systems can differ a lot from one location to another across Europe. It's easier to establish a standard for parking structures. We've focused just on main things, looking for quality of each system and also on its impact on mobility.



UX



E

**ENFORCEMENT**

*Audits enforcement results, staff formation, reporting notifications, clamping service and towing away service.*



## The European Standard Parking Award – On street

Regulation Systems can differ a lot from one location to another across Europe. It's easier to establish a standard for parking structures. We've focused just on main things, looking for quality of each system and also on its impact on mobility.

**UX**

**E**

**PA**

**PAYMENT/ACCES**

*Assess facilities/services referring to payment channels, pricing, payment systems, park registration, payment and penalty charges: how to access to the system.*



## ESPA - On street: Introduction

### Who is the standard award for?

The proposal has to be submitted by the public authority where the regulation takes place and, optionally, by the operator.

### Basics

A candidate system must operate in one single municipality and be managed by a single operator. All other systems must apply separately.

EPA will reward those system that regulates one or more type of spaces. Being not mandatory the regulation of all spaces of each type.

Only one assessment form will be used for the evaluation of a candidate. This assessment form will be separated into the mentioned typologies plus one for general information. Thus, a candidate can reach / pass the standard for, one, or more categories, and get the award for each of them.



## ESPA - On street: Typologies

Taking as a reference the EPA's document "Scope of parking in Europe – Data Collection", typologies of parking spaces are classified as follows:

General public use

Resident use

Other type of spaces

Loading & Unloading

Motorbikes

General public use: private vehicles can park there for a limited period of time, usually paying an amount of money (e.g. 2 €/h for 2 hours as maximum).

- This is the more common typology, since all cars and uses can be here.
- All regulated spaces that are not within the other typologies will go here.
- Regulated spaces that can be used for different purposes during the regulated hours will go here.

Minimum n° spaces required: 500

## ESPA - On street: Typologies

Taking as a reference the EPA's document "Scope of parking in Europe – Data Collection", typologies of parking spaces are classified as follows:

General public use

Resident use

Other type of spaces

Loading & Unloading

Motorbikes

Resident only: exclusively for authorized residents.

- If spaces within the controlled parking zone dedicated to residents in part of the time,  
apply to this typology for this time
- There can be exceptions

Minimum n° spaces required: 500





## ESPA - On street: Typologies

Taking as a reference the EPA's document "Scope of parking in Europe – Data Collection", typologies of parking spaces are classified as follows:

General public use

Resident use

Other type of spaces

Loading & Unloading

Motorbikes

- **Loading & unloading:** Regulated controlled parking zones reserved for vehicles (vans, lorries, etc.) that need to load or unload goods close to their destination.

To achieve the awards, the proposal requires to be complemented by one of the typologies: general public use or resident use.

Minimum n° spaces required: 100



## ESPA - On street: Typologies

Taking as a reference the EPA's document "Scope of parking in Europe – Data Collection", typologies of parking spaces are classified as follows:

General public use

Resident use

Other type of spaces

Loading & Unloading

Motorbikes

- **Motorbikes:** Regulated controlled parking zones allocated to parking motorbikes, two and three-wheeled scooters (exclusively signaled controlled parking zones).

To achieve the awards, the proposal requires to be complemented by one of the typologies: general public use or resident use.

Minimum n° spaces required: 100



## ESPA - On street: Typologies

Taking as a reference the EPA's document "Scope of parking in Europe – Data Collection", typologies of parking spaces are classified as follows:

General public use

Resident use

Other type of spaces

Loading & Unloading

Motorbikes

- **Other reserved spaces:** Regulated controlled parking zones reserved for handicapped users, police, hotels, taxis, etc.

To achieve the awards, the proposal requires to be complemented by one of the typologies: general public use or resident use.

Minimum n° spaces required: 50



## ESPA – On street: How to apply?



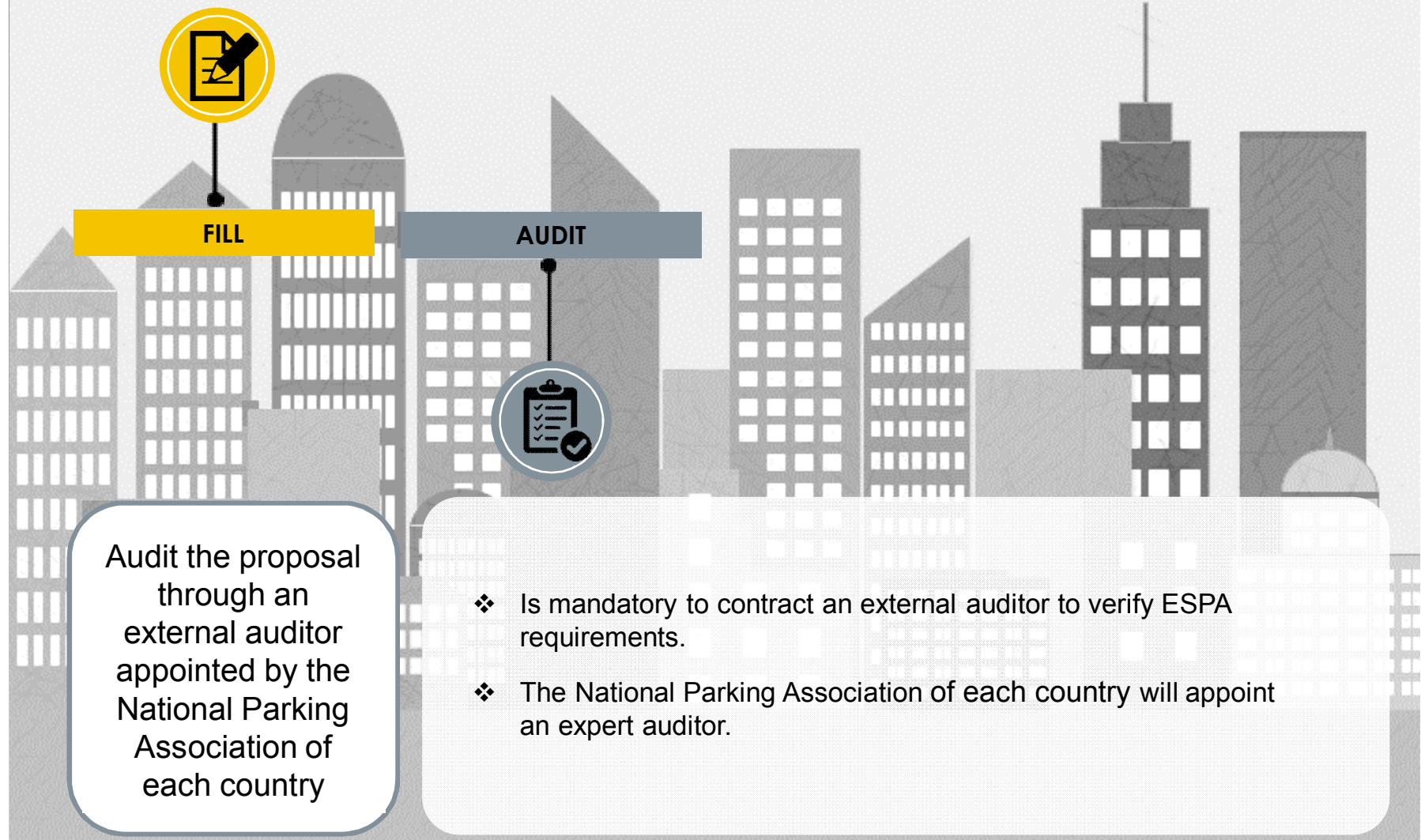
FILL

Download and fill the  
ESPA on-street form:

<http://www.europeanparking.eu/>

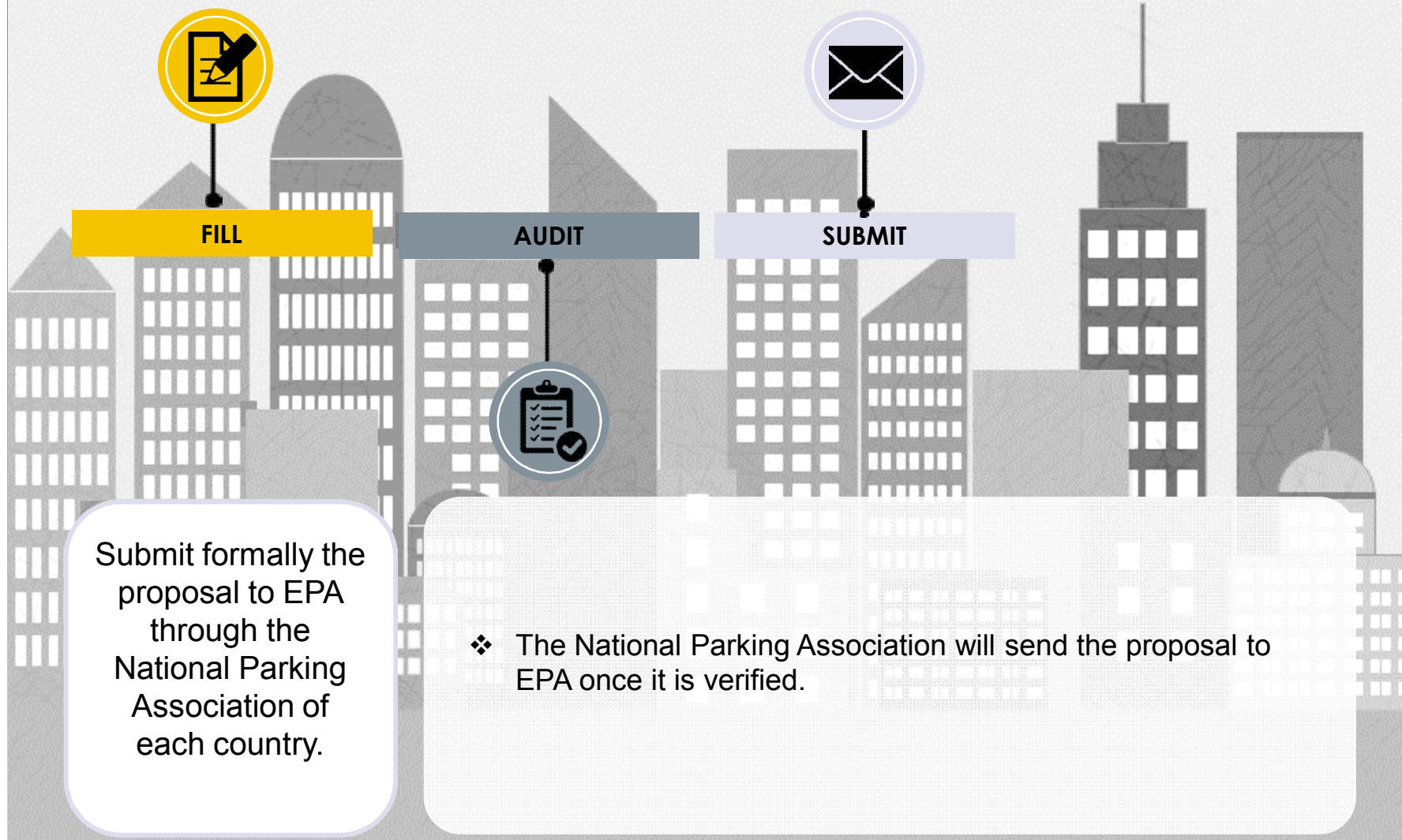
- ❖ Assessment form (one general file) 
- ❖ Complementary Documentation (one file per each category submitted) 
  - A brief description of the city context related to parking (parking pressure, regulation policies...)
  - Other (maps, photos...)
- ❖ Parking/mobility official report (optional)

## ESPA – On street: How to apply?



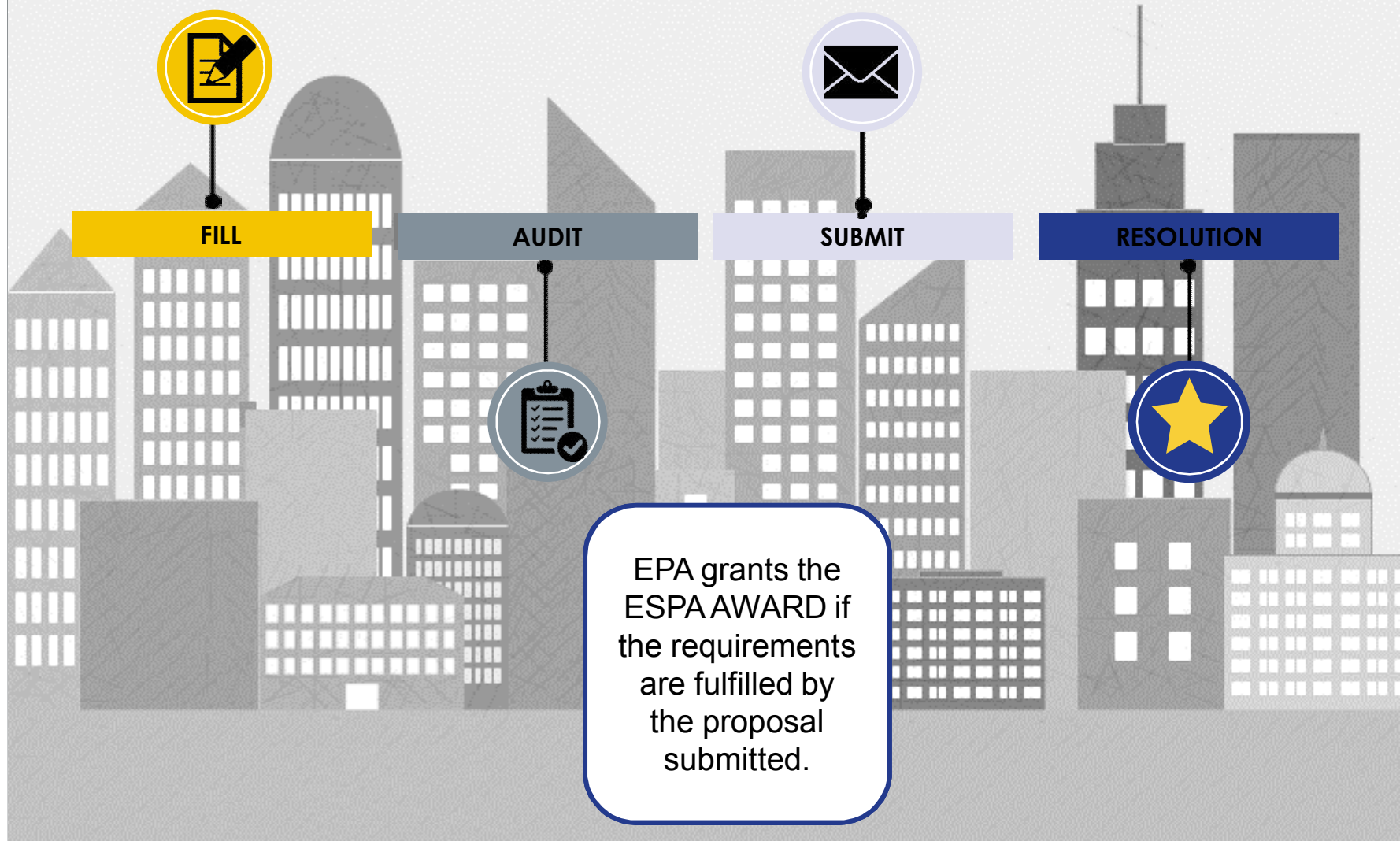


## ESPA – On street: How to apply?





## ESPA – On street: How to apply?



## ESPA – On street: The award

The awarded proposals will receive:

A Signal made from acryl glass, similar to ESPA Off street award.

A PDF file to be reproduced by the awarded local authority and posted by itself in the elements of its choice (on the asphalt at every space, the signs, the P&D machines, the Website ...).



EPA will charge a fee, similarly to what is done in the Off- street ESPA award.

**IMPORTANT!! EPA's design cannot be edited or changed.**



## ESPA – On street: The Golden award

**Golden ESPA award** is a granted of quality for on-street parking controlled parking zones.

To obtain the ESPA on-street golden award the candidate should apply and pass all the typologies controlled parking zones that are regulated in the city, having a minimum of 3 different typologies.

For instance: General public use, resident use, and Load/Unloading.

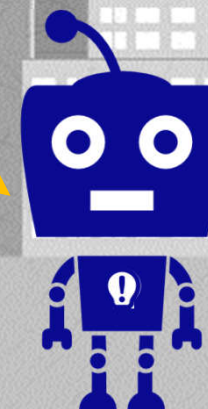


## ESPA – On street: FAQ's

What if the same space  
have different users  
depending on the time  
slot of the day?

In that case, both systems have to submit  
separately in the corresponding typologies.

Example: A controlled parking zone with spaces  
dedicated for rotation (shopping, etc) from 8 to 20  
and exclusive for residents from 20 to 8. The  
same spaces can apply for both typologies, the  
general and the exclusive for residents use.





# JOIN ON-STREET PARKING QUALITY!



For more information, please visit:

<http://www.europeanparking.eu/en/awards/>