

**SUMP-SEAP  
International  
Experience  
Exchange Workshop  
18 June 2013!**

# Do you want to link sustainable energy and urban mobility?

*Join an **International Experience Exchange Workshop** and interact with mobility and energy practitioners, local decision makers and experts on **Sustainable Urban Mobility Planning** and **Sustainable Energy Action Plan** development – the event is free of charge!*

## ***Making cities liveable – A more integrated planning approach for a sustainable future***

Many European cities have poor public transport infrastructure, consume too much energy and suffer from congestion. As a result, they face challenges in integrating policy and adopting approaches that encourage behaviour change, especially in the areas of mobility and energy. Due to the car dependency and the high energy demand of transport, there is a growing need to integrate transport planning with other aspects of urban planning.

Although considerable effort has been made across Europe to promote **Sustainable Urban Mobility Plans (SUMP)** and **Sustainable Energy Action Plans (SEAP)**, cities and urban areas still face a number of challenges. In order to create synergies between both types of plans, transport and energy managers should combine their resources in SUMP and SEAP development to reach common goals more efficiently.

The **International Experience Exchange Workshop** seeks to bring together decision makers, practitioners, mobility experts, energy experts and other stakeholders for the sake of outlining how SEAP and SUMP can be better integrated to benefit cities, citizens and businesses. Representatives will be present from cities currently engaged in reviewing their energy and mobility behaviours.

The workshop contributes to:

- identifying the possible synergies between the SEAP and SUMP development processes,
- an insight into some of the barriers to the effective implementation of integrated energy and mobility actions,
- sharing good practices and lessons learnt from professionals involved in urban mobility and energy policies,
- raising the awareness of local and regional administrations about the interdependency of energy and mobility,
- exchange and collaboration at a local level between experts on SEAP & SUMP development.

*“Transport has become more energy efficient, but EU transport still depends on oil and oil products for 96% of its energy needs.”*

*Transport White Paper*

*“Transport represents approx. 30% of the final energy consumption in the EU. Cars, trucks and light vehicles are responsible for 80% of the final energy consumed in the transport sector.”*

*SEAP Guidebook*

### *Common SUMP & SEAP objectives:*

- *Reduction of GHG emissions*
- *Reduction of energy consumption*
- *Increase in energy efficiency*
- *Behaviour change*
- *A better quality of life*

### *References / policy framework:*

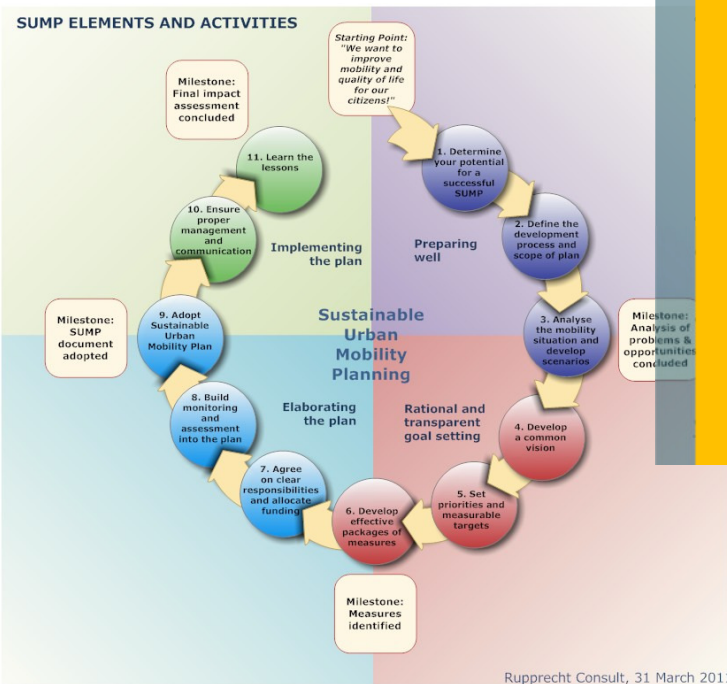
- *Transport White Paper 2011*
- *EU 20-20-20 Climate & Energy package*
- *Action Plan on Urban Mobility 2009*

## What's in it for you?

If your city, town or organisation is committed to sustainable mobility and/or sustainable energy, you are invited to attend the experience exchange workshop.

You will help inform future guidance on linking SEAP and SUMP and gain insight in how to ensure more energy efficient urban mobility.

Planning for People



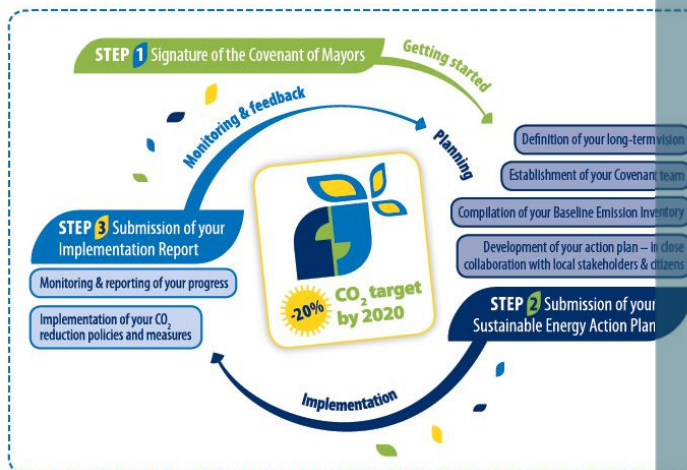
A **Sustainable Urban Mobility Plan (SUMP)** is a strategic plan designed to satisfy the mobility needs of people and businesses in cities and their surroundings for a better quality of life. It builds on existing planning practices, taking consideration of integration, participation, and evaluation principles. Key characteristics of sustainable urban mobility planning are:

- Active involvement of all stakeholders and the engagement of citizens
- Commitment to sustainability
- Looking "beyond borders" (integrated approach across sectors, cooperation between authority levels and institutions, coordination across neighbouring authorities)
- Focus on achieving ambitious, measurable targets
- Targeting cost internalisation i.e. reviewing transport costs and benefits for society
- Including all steps of the life cycle of policy making and implementation

For more information on the SUMP approach see [www.mobilityplans.eu](http://www.mobilityplans.eu)



## Step-by-step SEAP process



A **Sustainable Energy Action Plan (SEAP)** is a document that shows how Covenant of Mayors signatories will reach their commitment by 2020. It is built under the concept of integrated planning and a holistic approach to local energy systems. It defines concrete reduction measures, together with time frames and assigned responsibilities which translate the long-term strategy into action. Some success factors of the SEAP development process:

- Secure long-term political commitment
- Setting a clear vision of the desired future
- Gaining support from stakeholders and citizens
- A dedicated team and clear responsibilities
- Building on already-existing policies or activities
- Gaining inspiration from peers

For more information on the SEAP approach see [www.eumayors.eu/actions/sustainable-energy-action-plans\\_en.html](http://www.eumayors.eu/actions/sustainable-energy-action-plans_en.html)

## Location and registration

We invite you to join the International Experiences Exchange Workshop on the

**18<sup>th</sup> of June 2013**

The event will take place at:

**Marivaux Hotel, Boulevard Adolphe Max 98, B-1000 Brussels**

Time: 10:00 – 16:00

Please register online on [www.managenergy.net](http://www.managenergy.net).

You will receive a confirmation e-mail and a detailed agenda before the workshop.

**Register by the  
13<sup>th</sup> of June  
2013!**