



EUROPEAN CITIES AND REGIONS NETWORKING
FOR INNOVATIVE TRANSPORT SOLUTIONS

Networking to develop innovative technologies and policies for local transport

Suzanne Hoadley, Polis

What is Polis?

Network

European cities & regions

Innovation

Transport



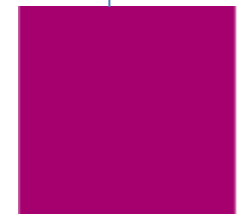
environment
& health



mobility
& traffic efficiency



safety
& security



economic
& social aspects

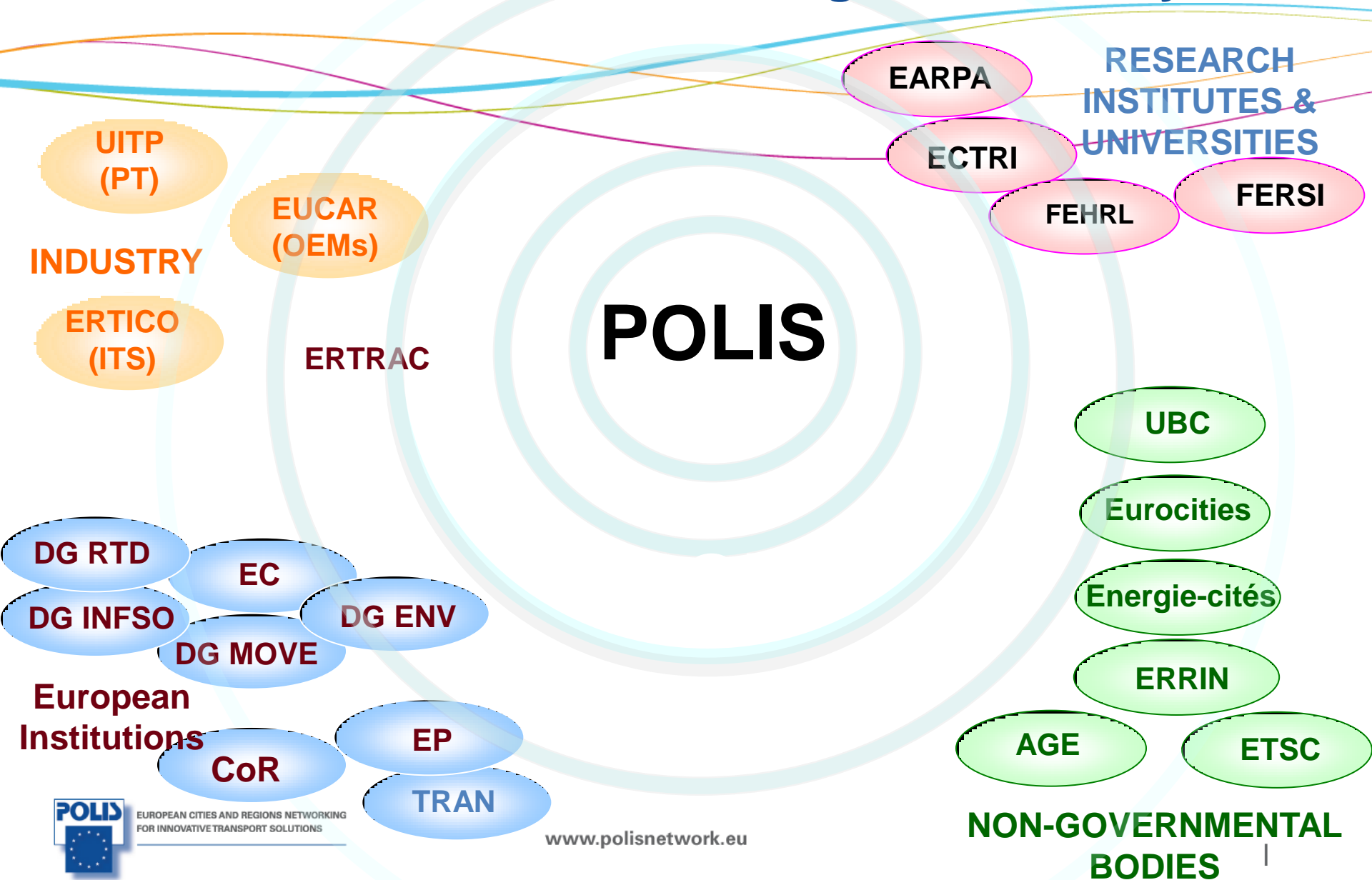


EUROPEAN CITIES AND REGIONS NETWORKING
FOR INNOVATIVE TRANSPORT SOLUTIONS

www.polisnetwork.eu

24 February 2012 | 2

POLIS: At the heart of European networking and initiatives on urban and regional mobility



ITS – the main application areas

Traffic/network management

Traffic light control



Public transport priority



Demand management (enforcement)



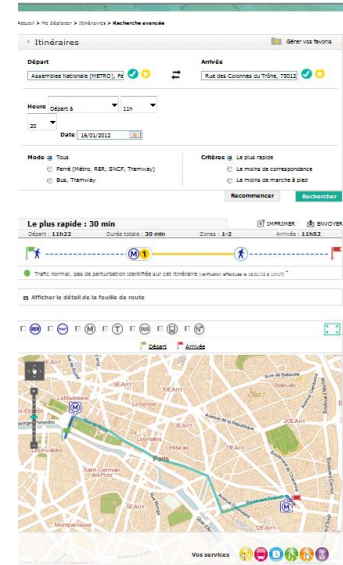
London launches congestion charging

Real-time information



Information services

Multimodal info



Payment systems & other areas



ITS – a tool to support policy

Traffic/network management

Information services

Payment systems

Other areas

Transport policy objectives

Traffic efficiency

Pollution reduction

Road safety

Inclusive transport

Modal shift

Less congestion

Multi-modal trips

Seamless mobility

Improved safety for pedestrians & cyclists

Less noise

Reliable information

More walking and cycling

Accessible transport

Smoother traffic flow

Higher car occupancy

Increase public transport patronage

Fewer & less severe road accidents

Less air pollution

Fewer CO2 emissions



ITS deployment challenges

- **Difficult to sell ITS to policy/decision makers**
 - ITS is not as visible as other transport measures (new road, bridge or bus)
 - Expected ITS benefits tend to materialise in medium to long-term
 - Impacts of ITS not widely understood/assessed
- **Local authorities' ITS needs are solution-oriented, technology neutral**
- **Technological issues**
 - Legacy and proprietary systems
 - Need to build on existing systems
 - Overcome vendor lock-in – reduce costs and open the market
 - Technology developing fast
 - Gap between research and deployment widening
 - Future proofing of ITS investments

ITS deployment challenges

- **Difficult to sell ITS to policy/decision makers**
 - ITS is not as visible as other transport measures (new road, bridge or bus)
 - Expected ITS benefits tend to materialise in medium to long-term
 - **Impacts of ITS not widely understood/assessed**
- **Local authorities' ITS needs are solution-oriented, technology neutral**
- **Technological issues**
 - **Legacy and proprietary systems**
 - **Need to build on existing systems**
 - **Overcome vendor lock-in – reduce costs and open the market**
 - Technology developing fast
 - Gap between research and deployment widening
 - Future proofing of ITS investments

ITS impacts assessment

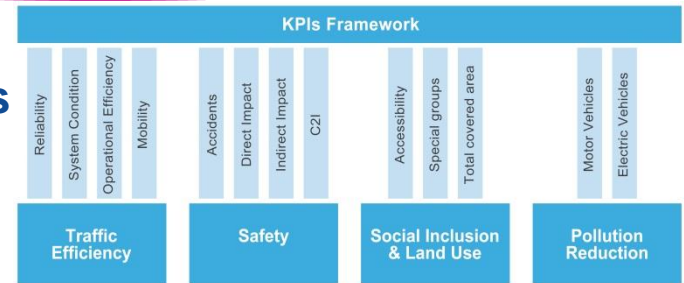


CONDUITS project (2009-2011 - FP7)

- Developed ITS key performance indicators

Why are ITS KPIs needed?

- Assess benefits (post-deployment)
- Enable comparison across cities (benchmarking)
- Assist traffic managers to make decisions (pre-deployment)



Why are the CONDUITS KPIs useful?

- No common evaluation framework used by cities & regions to assess ITS impacts
- Most existing evaluation methodologies assess impact on one policy area only (eg, traffic efficiency)
- Include weighting for different modes (car, public transport, cycling, pedestrian)

Open ITS systems – POSSE & EC's Digital Agenda

POSSE – Promoting Open Standards and Specifications in Europe

- **3-year Interreg project to start soon**
- **Objectives**
 - Promote the concept of open ITS systems in Europe building on existing UK and German experiences (and specifications)
 - Build the capacity of selected cities to initiate an open ITS systems process
 - Improve understanding of the impact of open ITS systems on cost savings
 - Explore expansion of existing open specifications to new ITS areas (cooperative systems, smartphones, etc)

Digital Agenda – Action 23

- **Guidelines on use of ICT standards in public procurement**
- **Draft guidelines released**

ITS needs for local authorities – solutions not technologies

- ITS developments and policy at EU level tend to focus on motorways and private transport
- City/regional needs for *ITS solutions enabling multi-modal, seamless sustainable mobility* not always given much attention
- Polis' response: Position statement on *Research/cooperation needs for urban and regional network management and ITS*
 - Defines network management and its changing face
 - Presents needs for ITS research and innovation according to the network management hierarchy (strategic, tactical and operational)
 - Needs grouped under four key headings:
 - Increased value and further development of existing assets
 - User devices, interfaces & applications, including mobile phones
 - Integrated network management
 - Open systems and data
- **Statement and needs matrix can be download from Polis internet**

Polis ITS priority topic 2012 – Data: the fuel of ITS

Main trends

- 1. Cost of data gathering/processing & information services rising**
- 2. Local authorities are no longer the only traffic data gatherer and information service provider**
 - Private sector holds huge amount of data coming from moving sources (as opposed to fixed roadside detectors) such as GSM, GNSS, vehicle data
 - Private sector taking over public sector in information service provision (eg, navigation devices, Smart phone apps, Google transit & traffic)
 - Social networks also playing a bigger role in information provision
- 3. Public authorities increasingly making data available to general public (European Directive on re-use of public sector information/PSI Directive – 2003)**
- 4. EU's ITS Directive (2010) requiring public authorities to make all road and traffic data available**

Huge implications and opportunities for public authorities

How will Polis address this topic?

- **Gather current practice on open data in area of transport**
- **Learn from experiences (good and bad)**
- **Discuss contractual (& financial?) arrangements for accessing transport data**
- **Come up with recommendations for building open data platforms**
- **Define requirements for specifications on open transport data and relay these to ITS Unit of DG MOVE**



Polis projects on ITS

c o n d u i t s

CoCities



POSSE

stadium
ITS for large events

Freilot

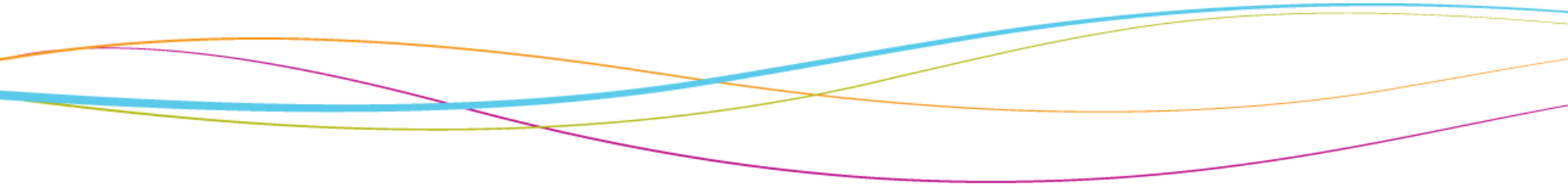
Molecules

Enhanced Wisetrip



EUROPEAN CITIES AND REGIONS NETWORKING
FOR INNOVATIVE TRANSPORT SOLUTIONS

www.polisnetwork.eu



Suzanne Hoadley
Polis
shoadley@polisnetwork.eu

