

atac

ROMA



# Road Safety Day

**Conference in Paris  
13/10/08**

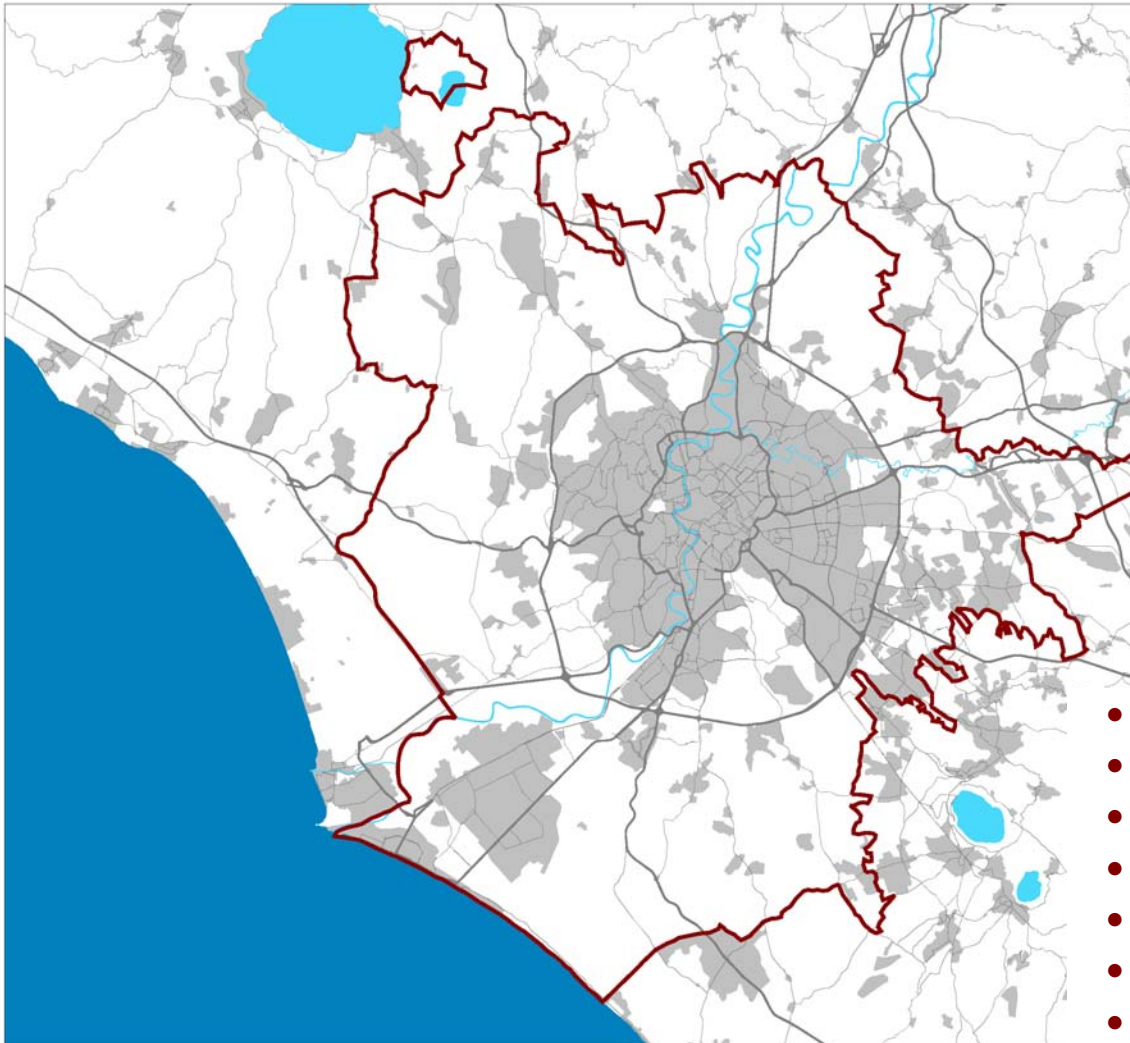
**Mobility sector in Rome and Road safety:  
commitments, research and plans.**

**Fabio Nussio\*, Alessandro Fuschiotto\*\*.**

(\* ) Head of international Co-operation

(\*\* ) Head of Planning and Safety Division

## The context: Rome



Municipal Area	1.285 skm
Population	2.800.000
Road Network	km 5.000
Vehicles	2.650.000
cars	1.950.000
2 wheels	550.000
goods delivery	150.000
Daily Trips	6.100.000
Peak-hour Trips	650.000

- The historic and cultural heritage
- Narrow and not modifiable roads
- The status of Italian Capital City
- The inner presence of the Vatican City
- The Attitude (85 vehicles/100 citizens)
- The Tourists (>23 millions per year)
- Tourist coaches: 200.000 per year

## Rome: The impacts and the mobility Agency role

### Modal Shift in Rome

Private vehicles	54%
Public Transport	24%
Pedestrians+bike	22%

#### Traffic inducing :

- Energy disruption
- Congestion
- Pollution
- Safety risks

#### Impacting on:

- Health
- City attractiveness
- Economic growth
- Quality of life



### Management of the Mobility



Comune di Roma

atac

ROMA



### New Mobility Agency

- Planning, Regulating and Controlling Mobility (Public and Private);
- ITS tools, infomobility & Mobility Centre;
- Permits and user contacts;
- Assets Property (Networks, Depots, Rolling Stocks)

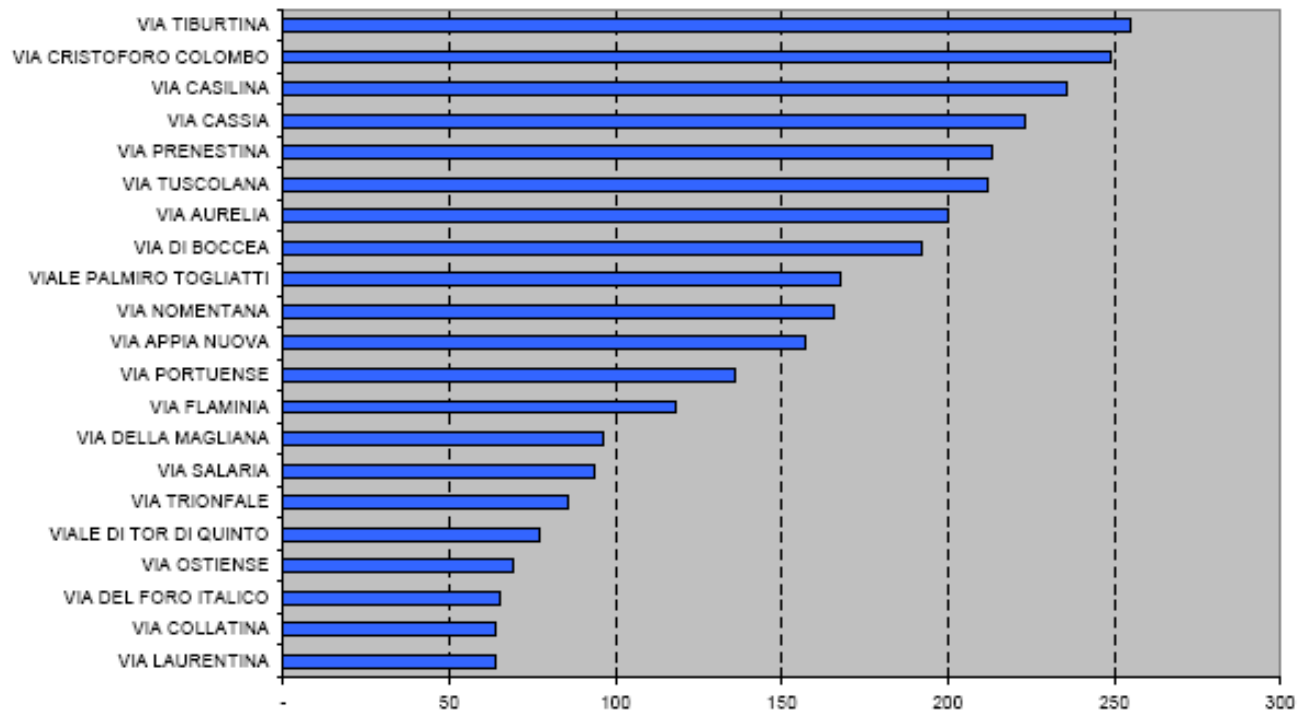
## Some Road Safety data in Rome

Accidents in Rome : about 20.000/y (deaths/injured)

Deaths: 215, injured 25.000 (2006)

PTW: 20% of total accidents, PT: 1%, Private car: 72%

Decrease in number of accidents, increase of danger: 2003/06 +30%deaths



**Black Spots: Ranking of the more dangerous 20 roman streets: n°accidents/year.**



## The Rome Plan for Road Safety

The City Council of Rome approved in June 2008 the Plan for Road Safety for the years 2008-10. Willing of the Administration is the:

- Improvement of the road safety in Rome and **reduction of dead and injured** in road accidents;
- Definition of dedicated new tools and structures;
- Beginning of an **inter-institutional dialogue** on such topic with Lazio Region, Province of Rome, the Government and the other large cities in Europe.

The plan will be developed by **specific workgroups in the Municipality**, supported by a **dedicated new structure**, inside the Mobility Agency (**ATAC**).

- **International co-operation** is positively seen and ATAC is already participating to the e-SUM project for 2-wheels road safety.
- Rome Municipality is dedicating to this Road Safety Plan **more than 4,5 M€**, including the contribution coming from the Region and the National Government.
- **More than 1,2 M€** are dedicated for the set-up of the Monitoring Centre.



## Topics of the Rome Plan for Road Safety 2008-10

- Detailed analysis of road safety in the city of Rome and **its critical areas** (“Black points”);
- Publication of the **Municipal Plan for Road Safety (MPRS)**;
- Publication of the **MPRS yearly program** and analysis on its effects, including the evaluation of cost/efficiency for each intervention, according to the national guidelines (National Plan for Road Safety);
- Design, implementation and operation of the **Monitoring Centre for Road Safety** together with Mobility Department and Urban Police.
- Development of a pilot action for the requalification of the road signalling;
- Development of a pilot project to reorganise traffic rules in order to favour mobility choices in coherence with road safety values;
- **“Safety Cities”** project, whose aim is to push national and regional Governments and the local administrations itself to set laws, rules and programs more adherent to road safety principles. Rome **will promote awareness initiatives and proposals**, looking for national and international agreements and common solutions.

## A practical example: PTWs in Rome

### Data on PTWs in Rome

- Motorcycles: 360.000 (pre-Euro 55.000)
- Mopeds: 155.000 (pre-Euro 70.000)
- Users inside the City Centre: 250.000
- Use Every day: 44%
- Use with bad weather (rain): 74% of the standard users
- Study: 14%, work: 53%, freetime: 18%, other: 15%

### Powered Two Wheels PLUS:

- Possibility to access any city zone: no LTZ or RP
- No parking Problem
- Possibility to guarantee time respect in city movements
- Comfort driving, agile, city models designed.
- Good weather conditions in southern European cities .
- Economic and image (young and sportive).

### Powered Two Wheels MINUS:

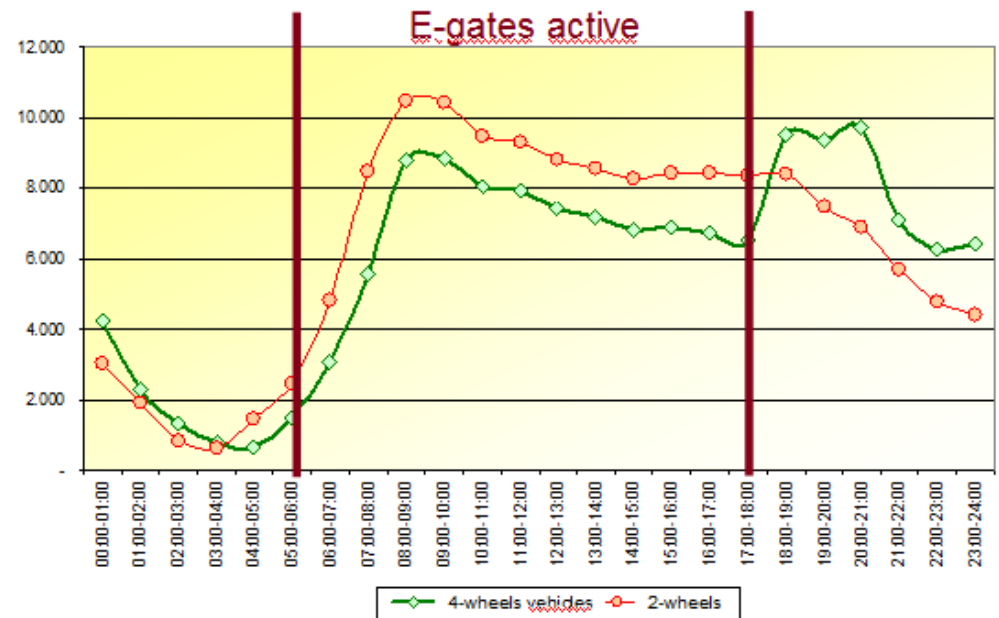
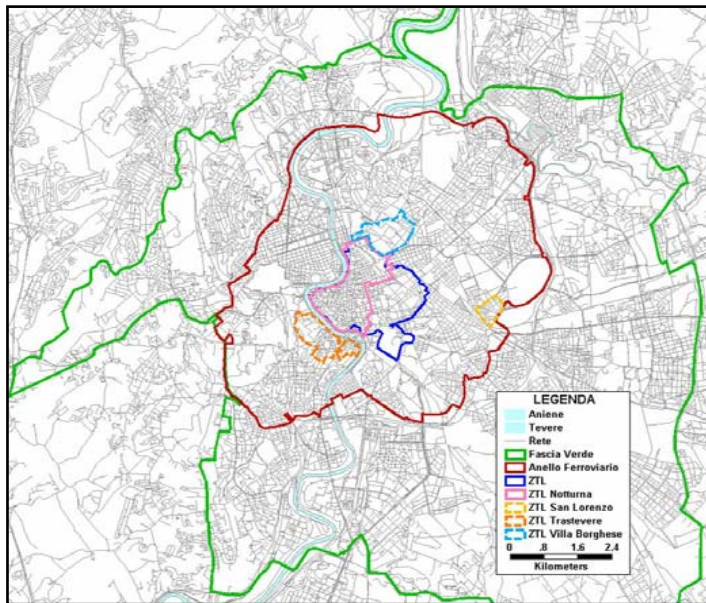
- Road safety (driving risk. More vulnerable and fragile)
- Environment (pollution and noise)
- Parking places and improper use of public space

**In Barcelona the number of motorbikes involved in road accidents has increased 21% in 2005. In 2006, the number has increased 19%.**

**In Rome, accident rate of PTW is 30 greater than Public Transport.**

## Rome, LTZ passage of cars and PTWs

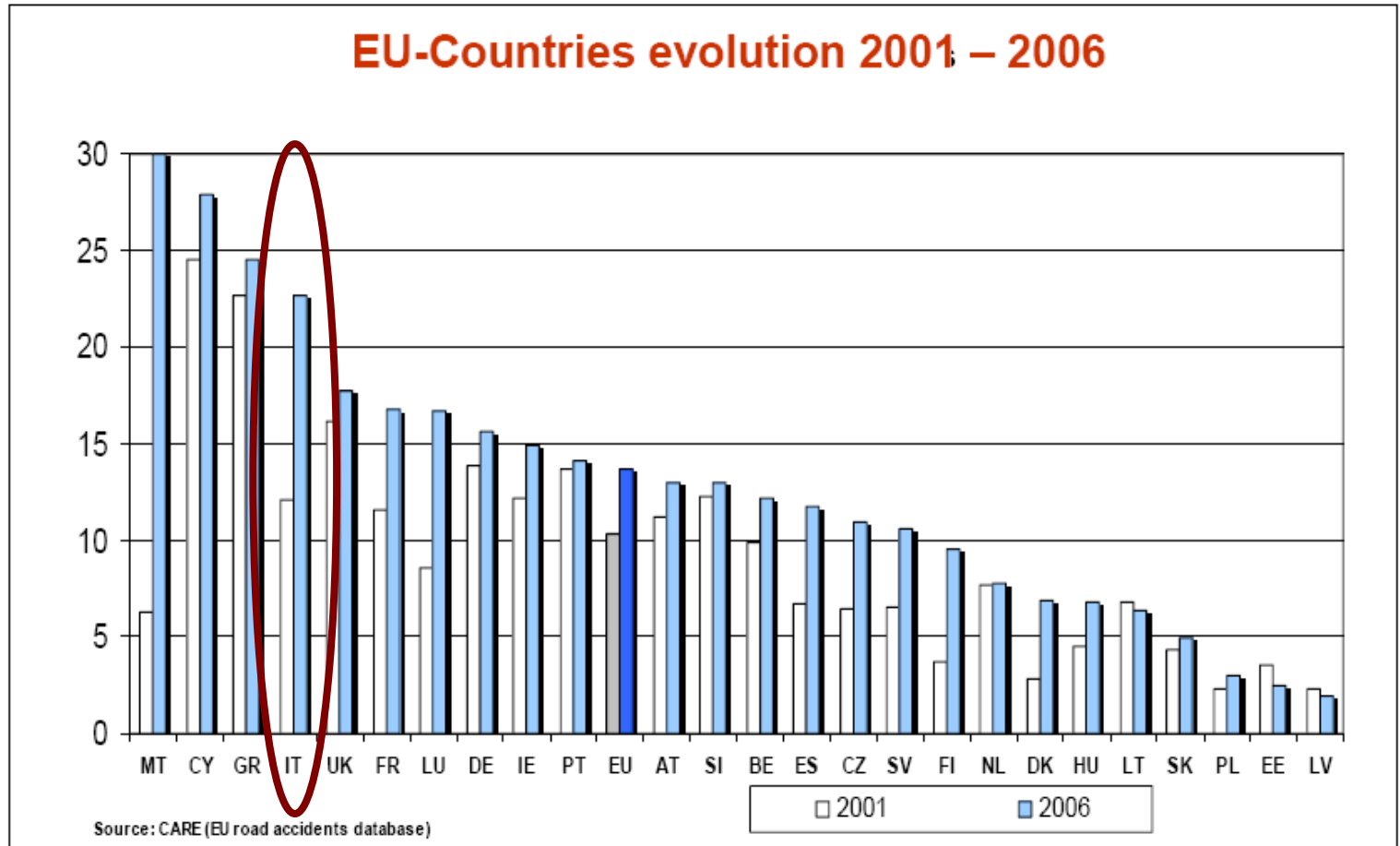
- **Electronic Access System:** operative in Rome since 2001 from 6.30-18.00
- Enlarged to other district (Trastevere – San Lorenzo - Monti – Testaccio – Night schemes) in 2006/8
- Traffic flow reduction: **about 18%.**
- **2 wheels: higher than 4-wheels in the restriction periods**





## Road Safety and PTWs

% Motorcycle and Moped fatalities / All fatalities



## What to do for PTWs: Improve road safety

- Motorbikes and Road Safety **Working Group** within the **Municipalities**.
- **Better comprehension** of motorbike accidents (reconstruction of accidents).
- Develop **Role of European Co-operation: The e-SUM project** (inter-ventures...).
- Educate **The e-SUM project** (and practise course).
- **Road Safety education** to children
- **Good practices guide**.
- **IMPACTS** network: **motorbike working group** (Paris, London, Barcelona, Madrid).
- **Awareness campaigns and Urban Police** road safety campaigns.
- Different **motorbike publications** (magazines, leaflets, etc).

## The e-SUM Project

**eSUM (european Safer Urban Motorcycling):** a constant reduction in P2W accidents can be achieved addressing P2W safety

**Cooper**

**Indust**

**Cities a**

- impr
- iden
- appl
- dem

### Results of e-SUM project

- eSUM Diagnosis of Urban Motorcycling Safety,
- Best Practice Guidance for Improving Urban P2W Safety,
- Demonstrations for Improving Urban P2W Safety,
- Potential Impacts for Improving Urban P2W Safety,
- Downloadable promoting safer P2Ws models on European City Streets

**wledge**

**rers, to:**

**Plans;**

eSUM best practice are to be transferred to cities across Europe

# Thank you!

Fabio Nussio, ATAC SpA  
Head of International Relations  
fabio.nussio@atac.roma.it

Alessandro Fuschiotto,  
Head of Planning & Safety Division  
alessandrofuschiotto@atac.roma.it

[www.atac.roma.it](http://www.atac.roma.it)