



# Streetscape Guidance 2009: Executive Summary

## A guide to better London Streets

MAYOR OF LONDON

Transport for London





# Introduction

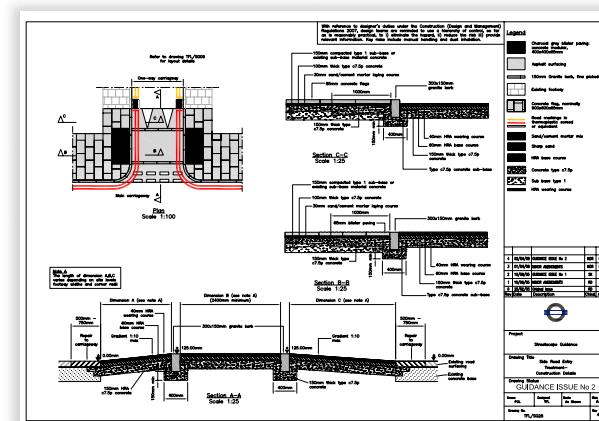
London is a fine city made up of grand streets, beautiful open spaces and world-class architecture. Teams of creative, talented and dedicated people help to ensure it retains its character by developing and maintaining urban spaces in the city.

To ensure that the design of our streets receives a consistently high level of care and attention, Transport for London (TfL) has written Streetscape Guidance. The vision contained in the Guidance is for the streetscape to provide a quiet backdrop to our city and to enhance its character and activities, rather than overpower or dominate them. The Guidance has been developed for the Transport for London Road Network (TLRN), however the principles can be applied to any roads in the Capital.

We encourage all those whose work has an impact upon the look and feel of the city to become familiar with the Guidance, so that together we can improve the city and ensure that the streets are places that people want to spend time in as well as travel through.

TfL will continue to review and revise Streetscape Guidance. Your thoughts will help us to keep improving it, so please turn to page 7 for more information about how you can tell us what you think.

**All images in this summary are pages from Streetscape Guidance 2009: A Guide to Better Streets which can be downloaded from [tfl.gov.uk/streetscape](http://tfl.gov.uk/streetscape)**



Details are provided to guide design and construction

## Design teams

TfL encourages users of the Guidance to work in multi-disciplinary design teams. This approach ensures that all aspects of the street's role as a place to spend time in and as a transport conduit are considered and understood.

TfL also supports Urban Design London ([www.urbandesignlondon.com](http://www.urbandesignlondon.com)), which provides training and networking opportunities, supporting this vision of collaborative working.

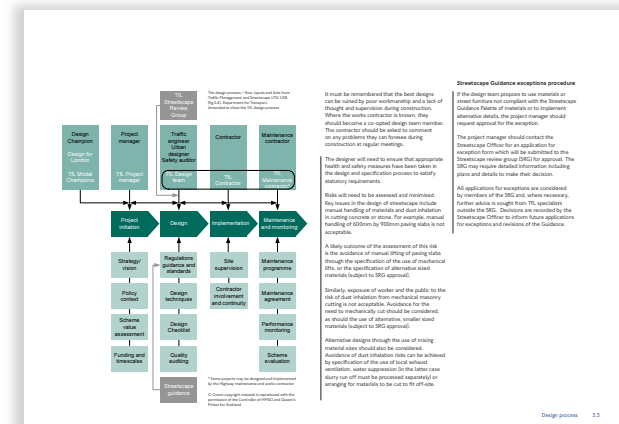
## Sharing the space

Visitors to the Capital and those who live or work here have varied requirements of the city's streets. The Guidance pays particular attention to the needs of cyclists, pedestrians and people with visual or mobility impairments.

To encourage urban design that caters for such diverse needs, TfL sponsors an annual Institution of Highways and Transportation award. The award recognises those projects which incorporate best practice, take a sustainable approach, and embrace accessibility, inclusiveness and equality.



The Guidance caters for the needs of all users of the street



### Multi-disciplinary teams deliver a holistic approach

# Key design principles

A consistent approach to design and workmanship is essential for a high quality streetscape. A set of key design principles underpin Streetscape Guidance, complementing TfL's vision to create the world's best managed streets for a world-class city. These principles are fully outlined in Streetscape Guidance, and summarised below.

## Sustainable design

Designs should make a significant contribution to tackling climate change and to protecting and enhancing the local environment.

## A holistic approach

Those who work on the TLRN are encouraged to consider the effect of their work on all street users; the local, regional and national policy context; and the surrounding landscape and townscape.

## Consistency and clarity

A consistent approach to the design and management of the TLRN will improve legibility across the network. A multi-disciplinary design team approach and the recommended palette of materials will help to achieve this.

## Integration and co-ordination

TfL works with London's boroughs and other London-based organisations to share information and collaborate in the design and management of London's streets. This ensures that skills and knowledge are utilised for the benefit of the local area. Taking a consultative approach means that work is informed by a wide range of stakeholders.

## Understanding the requirements

Whilst the primary role of the TLRN is to assist the movement of people and goods, the needs of all users of the network should be taken into consideration. Consultation with a wide group of stakeholders assists in determining priorities for action.



Trees in the right place enhance the local environment

## Design for people

As well as catering for the needs of vehicles, the TLRN must address the needs of pedestrians and cyclists. This means providing uncluttered and well-lit footways and cycle paths, with street furniture placed in a coordinated and logical manner. Routes should reflect the direction in which people want to travel with limited need for pedestrian signage.

## Reduction of crime and disorder

Design teams have a duty to ensure that all projects minimise the scope for crime and create a safe and secure environment where people do not feel under threat. This should be considered in conjunction with other key design principles to ensure appropriate balance, and with the advice of Community Safety Managers.

## Function and safety

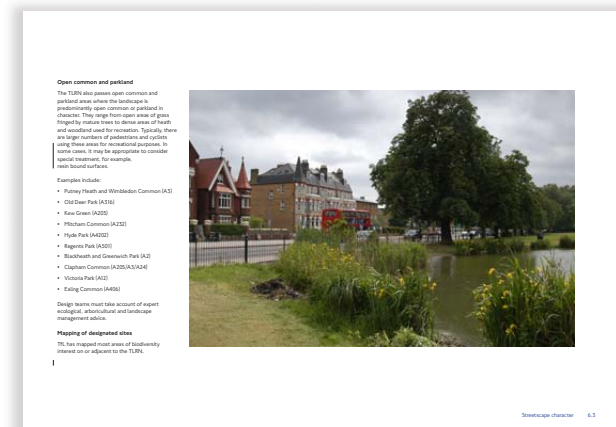
The design and management of the streets must enable all to use the space efficiently and safely for the purposes that they are designed. This includes the encouragement of appropriate design speeds, using lighting that illuminates the area sensitively, and improving legibility so that bollards, guardrails, signs and road markings are kept to a minimum.

## Recognition of local context and distinctiveness

Streetscape design must respect the character of the place through which the TLRN passes, not only the physical attributes of landscape and townscape, but also the activity, vitality and distinctiveness of the local community.

## Access for all

The public realm is a place where people of all abilities have the right to move around and to socialise easily. TfL takes its duty to protect this right for people with mobility and visual impairments very seriously.



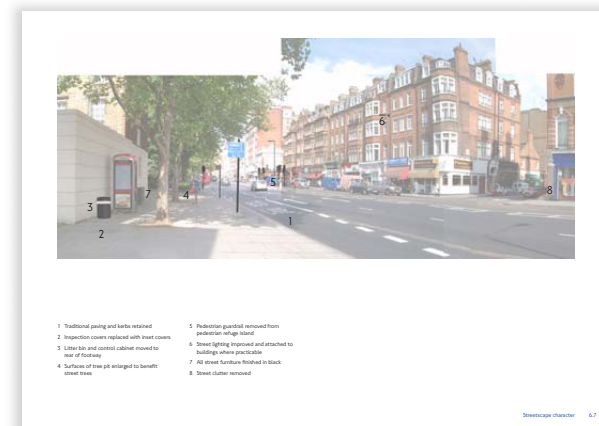
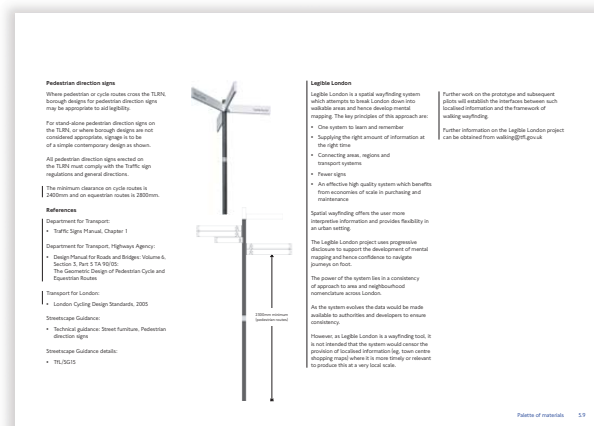
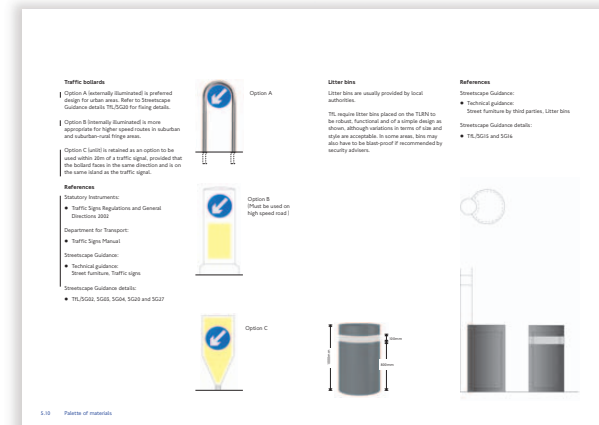
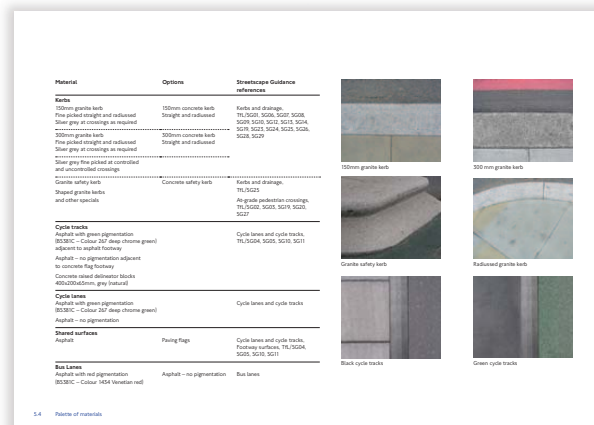
## Materials and maintenance

Appropriate investment and continual care is necessary to ensure safe, serviceable and sustainable streetscapes. This can be achieved by using proven, durable materials and focusing on the values of simple, ageless design and quality workmanship both in build and subsequent maintenance.

## Palette of materials

A recommended palette of materials is included in the Guidance. Every team that contributes to the look and feel of the streetscape of the TLRN is encouraged to use the recommended materials and street furniture across the TLRN. The materials selected for the palette are durable, unobtrusive and meet the needs of all road users. The recommendations have been endorsed by London Remade, following their sustainability audit of a sample of the materials in the palette.

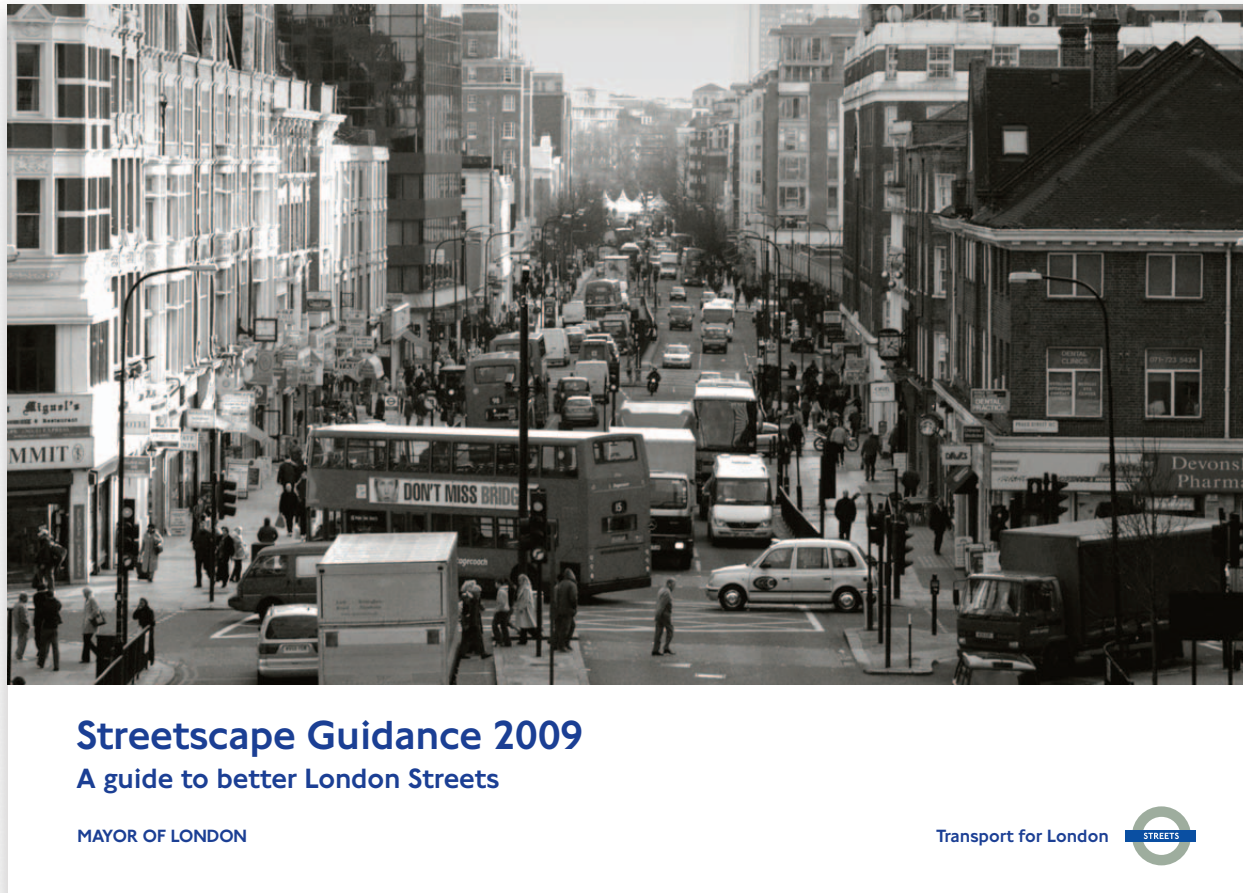
We recognise, however, that a 'one size fits all approach' is not always successful and exceptions are made to enable the use of particular materials outside the recommended palette to reflect special circumstances.



The palette guides the choice of materials



# Feedback on the Streetscape Guidance



## Downloading the Streetscape Guidance

You can download the Streetscape Guidance at [tfl.gov.uk/streetscape](https://tfl.gov.uk/streetscape)

TfL will continue to review and revise the Guidance for currency and to ensure that it continues to be of value to design teams and across London. As part of this process, TfL invites you to comment on the Guidance by responding to the questionnaire that was sent with this executive summary. If you have any additional comments, or you didn't receive the questionnaire, send an email to [StreetscapeGuidance@tfl.gov.uk](mailto:StreetscapeGuidance@tfl.gov.uk)

TfL recognises the benefits to be gained from working with London local authorities and those other key stakeholders with a particular interest in the look and feel of London's streets and will continue to do so, especially where their policies and guidance on streetscape issues may differ from those of TfL.

Collaboration with London local authorities and contractors on highway-related initiatives is a continuing process. This includes sharing knowledge on design and materials, developing specifications and exploring the opportunities to reuse streetscape materials.

Transport for London  
Palestra, 197 Blackfriars Road,  
London, SE1 8NJ

Website: [tfl.gov.uk/streetscape](http://tfl.gov.uk/streetscape)  
Email: [StreetscapeGuidance@tfl.gov.uk](mailto:StreetscapeGuidance@tfl.gov.uk)  
Telephone: 020 3054 0211

Developed by: Environment Team,  
Surface Transport  
Published by: Communications Planning,  
Surface Transport

Document number: STR/023  
January 2009