



22-23 November 2018, Manchester

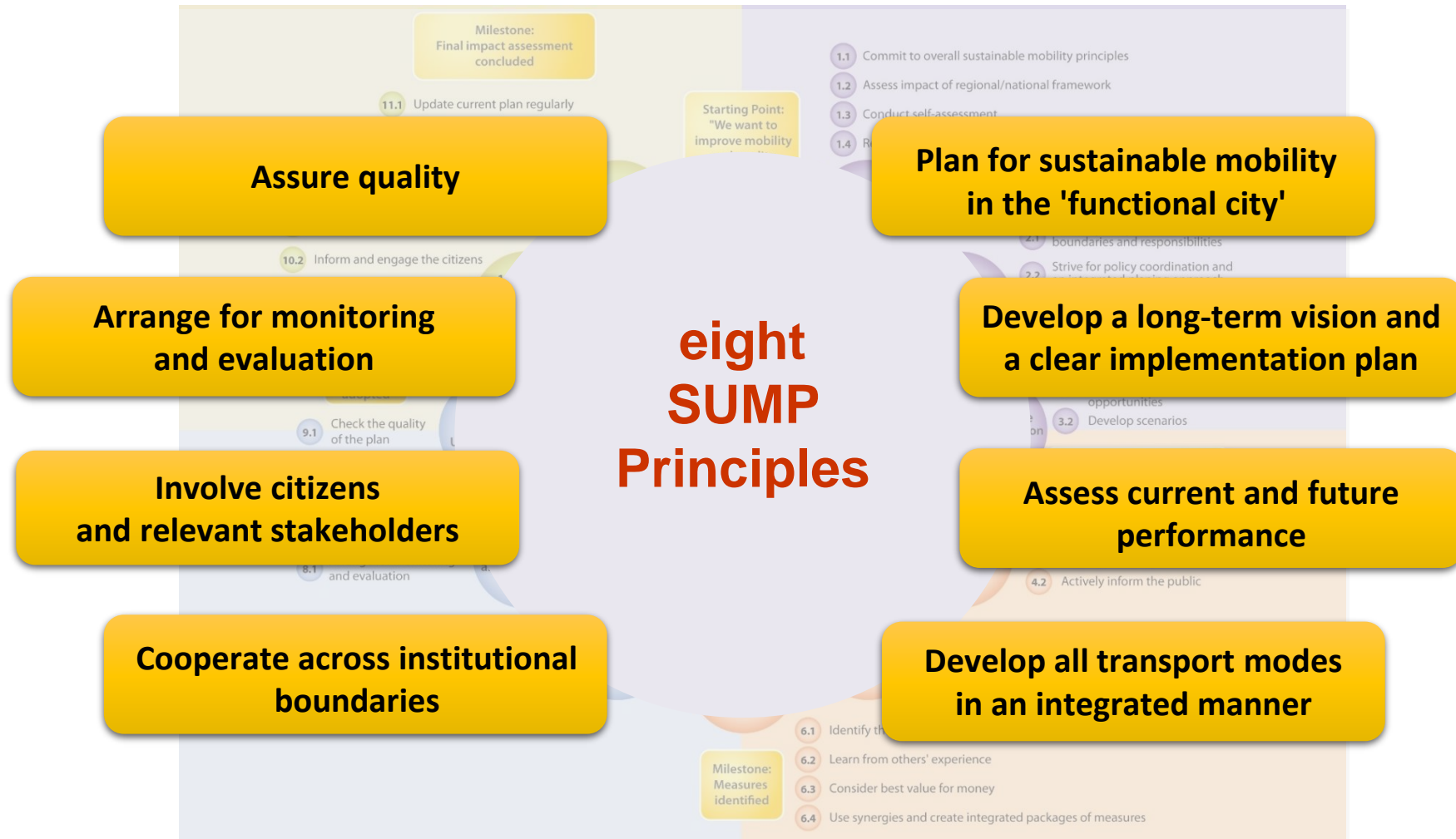
# How cities assess and improve strategic mobility planning with the updated online SUMP Self-Assessment tool

## Session 3E. SUMPS: Time to take stock

Lasse Brand, Rupprecht Consult

Polis Conference 2018 | 22 November 2018, Manchester, UK

# Sustainable Urban Mobility Planning Principles



# Benefits of Sustainable Urban Mobility Planning



Image: Eltis/ H. Schiffer

# Benefit: Better access to funding (examples)

- European Structural and Investment Funds
  - INTERREG
  - Urban Innovation Actions
  - URBACT
- European Investment Bank
  - JASPERS
  - ELENA
- Horizon 2020
  - CiViTAS Demo Projects (IA)
- Connecting Europe Facility (CEF)
- European Bank for Reconstruction and Development (EBRD)
- MobiliseYourCity, GIZ, AFD and other development funding
- National funding

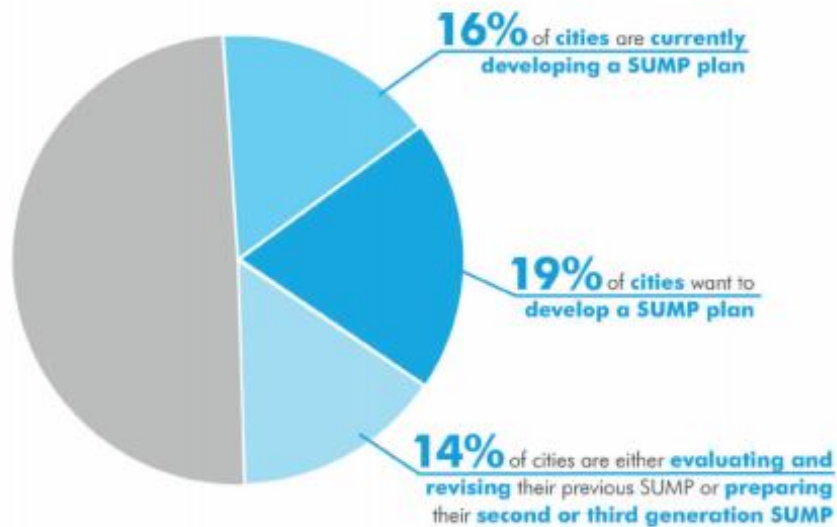


Images: BKK Centre for Budapest Transport

# Status: SUMP-UP Needs Assessment report

“A total of 1,000 SUMP-UPs have been identified in Europe.”

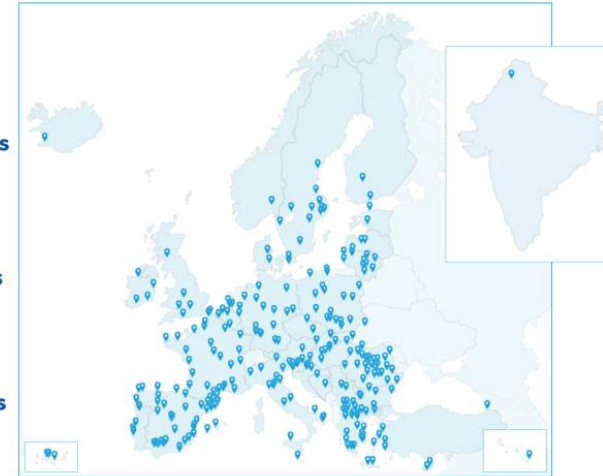
(The Status of SUMP-UPs in EU Member States report, CIVITAS SUMP-UP and Prosperity, 2018)



1 Survey with **328** city responses

1 Focus group with **18** mobility experts

Interviews with **10** national experts

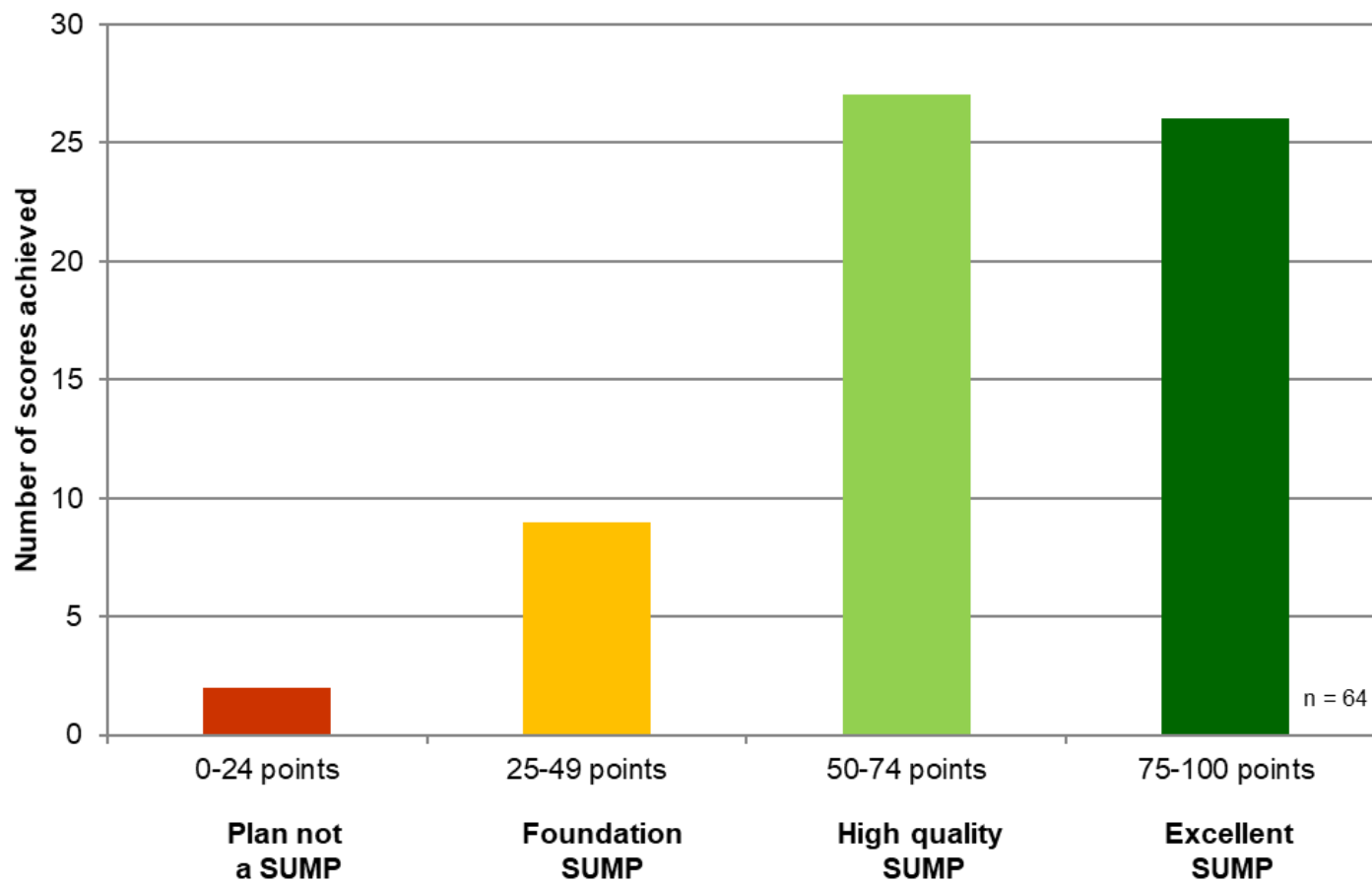


Download the main results report

Download the full needs assessment report

<http://sumps-up.eu/reports/>

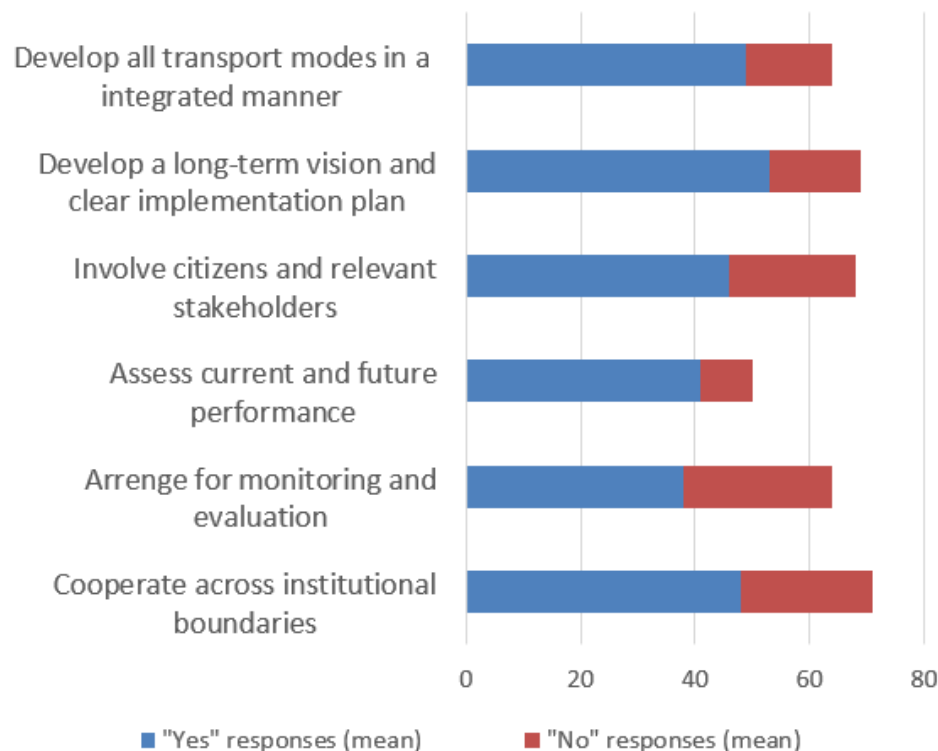
# Status: SUMP Self-Assessment



Source: Evaluation of sufficiently complete SUMP Self-Assessment responses, CHALLENGE, 2016

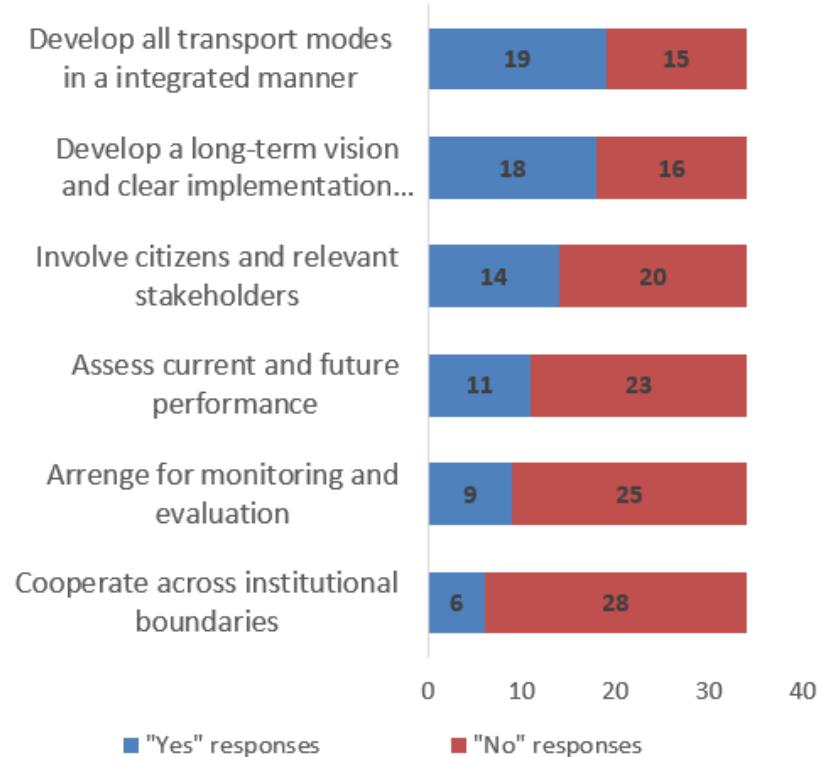
# Status: SUMP Principles

## SUMP Self-assessment



Source: Evaluation of sufficiently complete SUMP Self-Assessment responses, CH4ALLENGE, 2016

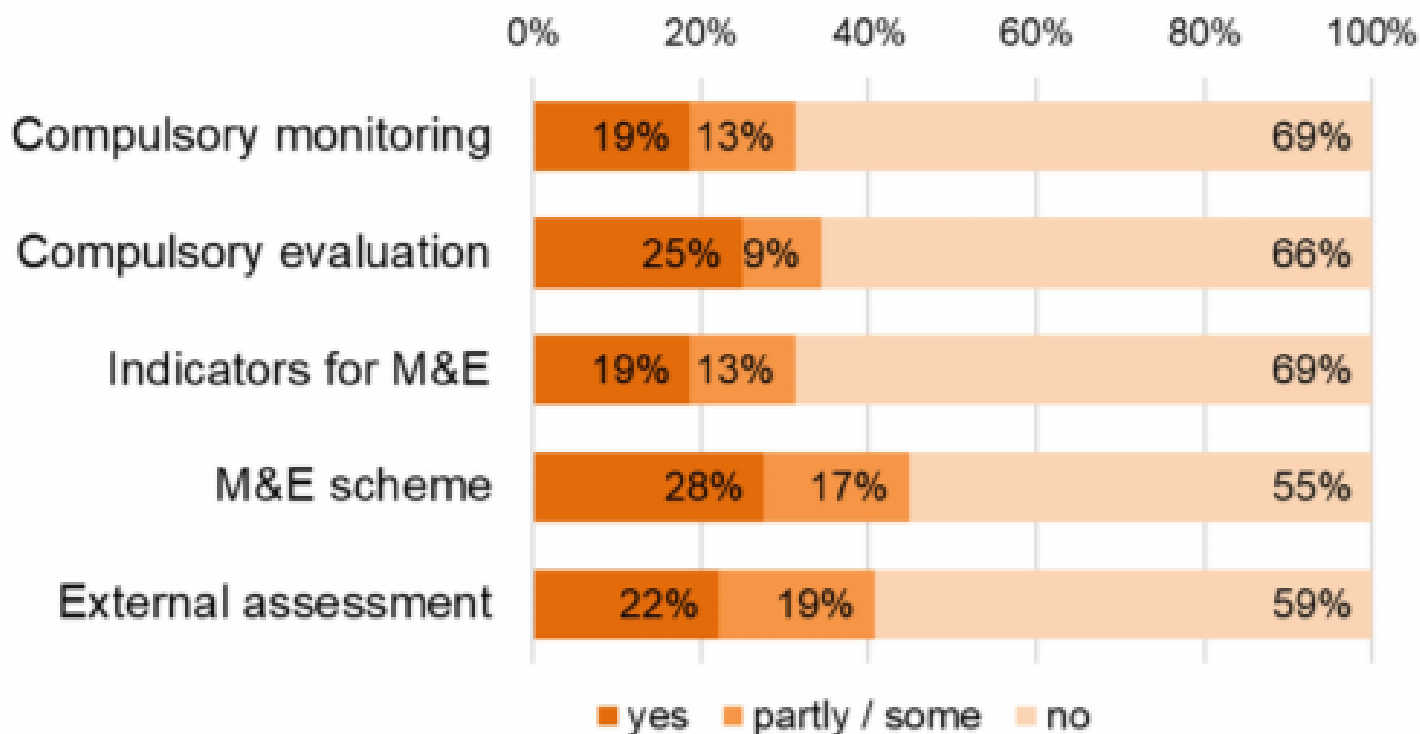
## SUMPs-UP learning programme



Source: City level evaluation Interim report, SUMPs-Up Deliverable 7.2, 2018

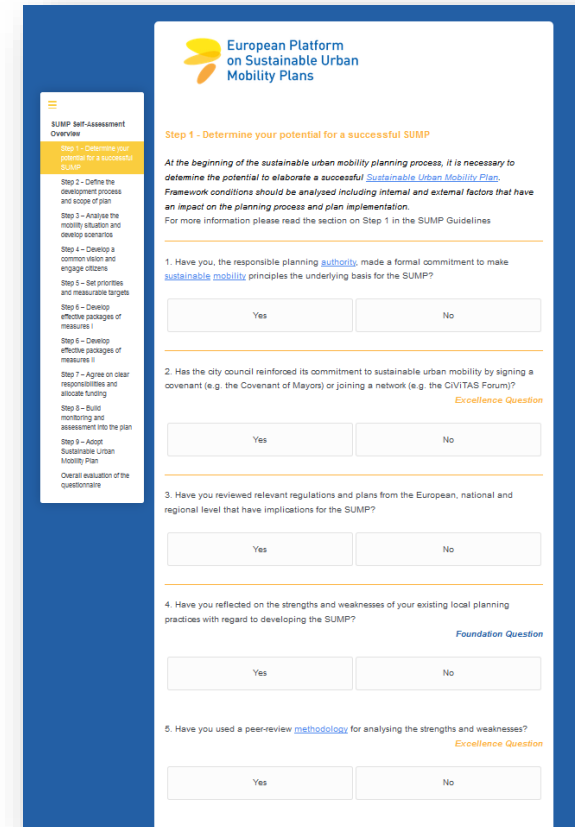
# Examples of national support for SUMP

Figure 8: Existing elements of monitoring and evaluation (M&E) of SUMPs



# Online SUMP Self-Assessment

- Developed in close cooperation with DG MOVE and EASME in the CH4ALLENGE project
- **Online and free to use**
- Allows **anonymous assessment**
- Simple concept of **100 yes-no questions** balanced across the SUMP principles
- Assessment of **SUMP development process**
- Primary use to **assess plan after completion**. Additionally to assess previous plans or to give guidance before/ during plan preparation.
- Provides **feedback on strengths and weaknesses** for SUMP steps and principles



The screenshot shows the 'SUMP Self-Assessment Overview' page. On the left is a sidebar with a list of steps from Step 1 to Step 9, with Step 1 highlighted. The main content area is titled 'Step 1 - Determine your potential for a successful SUMP'. It contains introductory text about the planning process and a list of five questions, each with 'Yes' and 'No' response buttons. Questions 1, 2, and 3 are marked as 'Excellence Question', while questions 4 and 5 are marked as 'Foundation Question'.

**SUMP Self-Assessment Overview**

**Step 1 - Determine your potential for a successful SUMP**

At the beginning of the sustainable urban mobility planning process, it is necessary to determine the potential to elaborate a successful [Sustainable Urban Mobility Plan](#). Framework conditions should be analysed including internal and external factors that have an impact on the planning process and plan implementation. For more information please read the section on Step 1 in the SUMP Guidelines

1. Have you, the responsible planning authority, made a formal commitment to make sustainable mobility principles the underlying basis for the SUMP?

Yes No

2. Has the city council reinforced its commitment to sustainable urban mobility by signing a covenant (e.g. the Covenant of Mayors) or joining a network (e.g. the CIVITAS Forum)? *Excellence Question*

Yes No

3. Have you reviewed relevant regulations and plans from the European, national and regional level that have implications for the SUMP?

Yes No

4. Have you reflected on the strengths and weaknesses of your existing local planning practices with regard to developing the SUMP? *Foundation Question*

Yes No

5. Have you used a peer-review methodology for analysing the strengths and weaknesses? *Excellence Question*

Yes No

**Available on Eltis**  
[www.eltis.org/mobility-plans/theSUMPprocess](http://www.eltis.org/mobility-plans/theSUMPprocess)

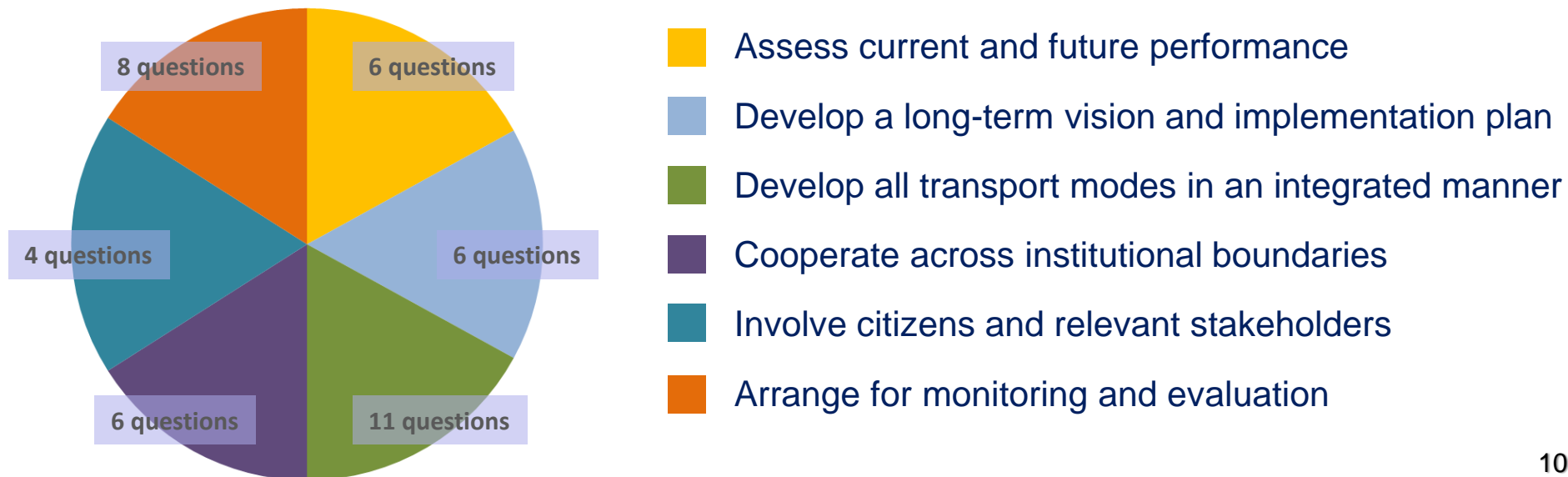
# Updated SUMP Self-Assessment

Comprehensive revision:

- Lower number of questions with **answer scales**
- **Tailor-made sets of questions** for different starting points and conditions (larger cities, smaller cities, regions, **cities without a SUMP**)

Main practical use:

- **helps cities to identify strengths & weaknesses to improve planning**



# Updated SUMP Self-Assessment

Q15. Which of the following urban mobility related issues have been analysed for the SUMP?

*This includes recent previous analyses that have been used for the SUMP. Please select all options that apply.*

- ☐ Air pollution and traffic noise
- ☐ Traffic safety
- ☐ Traffic congestion
- ☐ Liveability of streets
- ☐ Accessibility to services, employment and education

Q38. Safety and security: Does the SUMP present measures to improve safety and security of all transport modes?

- ☐ Not at all
- ☐ To a small extent
- ☐ To a moderate extent

Q22. Does the SUMP contain an accepted long-term vision of urban mobility?

- ☐ No long-term vision in the SUMP
- ☐ Vision is accepted only in the mobility department
- ☐ Vision is accepted in the entire administration
- ☐ Vision is accepted in the administration and by some external stakeholders
- ☐ Vision is accepted in the administration and by most external stakeholders

5) In the last year, how often did you **meet with other departments** of your administration (e.g. for environment, for urban development, etc.) to coordinate your activities?

- ☐ Never
- ☐ Once
- ☐ Two or three times
- ☐ Every two or three months
- ☐ Every month or more often

11) In the last year, which **evaluation methods** did you use to evaluate mobility measures after implementation? *Please select all options that apply.*

- ☐ Only intuitive assessment
- ☐ Satisfaction survey about the measure
- ☐ Traffic counting or other method to measure the (mobility) situation afterwards
- ☐ Traffic counting or other method to measure the mobility situation before and afterwards
- ☐ Other method

## Assessment of SUMP document



Image: Rupprecht Consult



Image: BKK Centre for Budapest Transport



Image: City of Ghent

## Assessment of planning activities

# Other SUMP support products



<http://sumps-up.eu/>



# SLP call coming on 28 November!

## ATTENTION ALL LOCAL AND REGIONAL AUTHORITIES!

- Need advice on implementing a Sustainable Urban Mobility Plan (SUMP)?
- Want to deepen your knowledge on SUMP financing and procurement?
- Ready to join forces with other cities facing similar mobility challenges?

## THEN CIVITAS SUMPS-UP IS HERE TO HELP!



THE CIVITAS INITIATIVE  
IS CO-FINANCED BY THE  
EUROPEAN UNION

We are launching a call for cities to join our final SUMP Learning Programme (SLP), which is set to start in June 2019. We encourage planning authorities (of all sizes) with considerable experience in sustainable urban mobility planning to apply.

Cities involved in the SLP will:

- Receive support from SUMPS-Up mobility experts and a peer review from fellow participants;
- Take part in a range of activities that mix online and face-to-face learning and exchange;
- Test and apply urban mobility planning tools specific to their local contexts.

Be sure to look out for the call! It will close on 11 January 2019.

[WWW.SUMPS-UP.EU/CALLS-FUNDING](http://WWW.SUMPS-UP.EU/CALLS-FUNDING)



Image: iStock / wallix

# Thank you!

**How cities assess and improve strategic mobility planning with the updated online SUMP Self-Assessment tool**

Rupprecht Consult – Forschung & Beratung GmbH

Lasse Brand

**Feedback and questions welcome**

[sump@rupprecht-consult.eu](mailto:sump@rupprecht-consult.eu)

[www.rupprecht-consult.eu](http://www.rupprecht-consult.eu)

[www.sumps-up.eu](http://www.sumps-up.eu)

**Legal Disclaimer:** The sole responsibility for the content of this presentation lies with the authors. It does not necessarily reflect the opinion of the European Union. The European Commission is not responsible for any use that may be made of the information contained therein. All images are provided by the respective partners (unless otherwise noted) and are approved for reproduction in this publication.



THE CIVITAS INITIATIVE  
IS CO-FINANCED BY THE  
EUROPEAN UNION