

Lutske Lindeman
City of Rotterdam

October 9, 2014

Rotterdam programme on Sustainable mobility & electric vehicles

Rotterdam
electric 



Today's venue



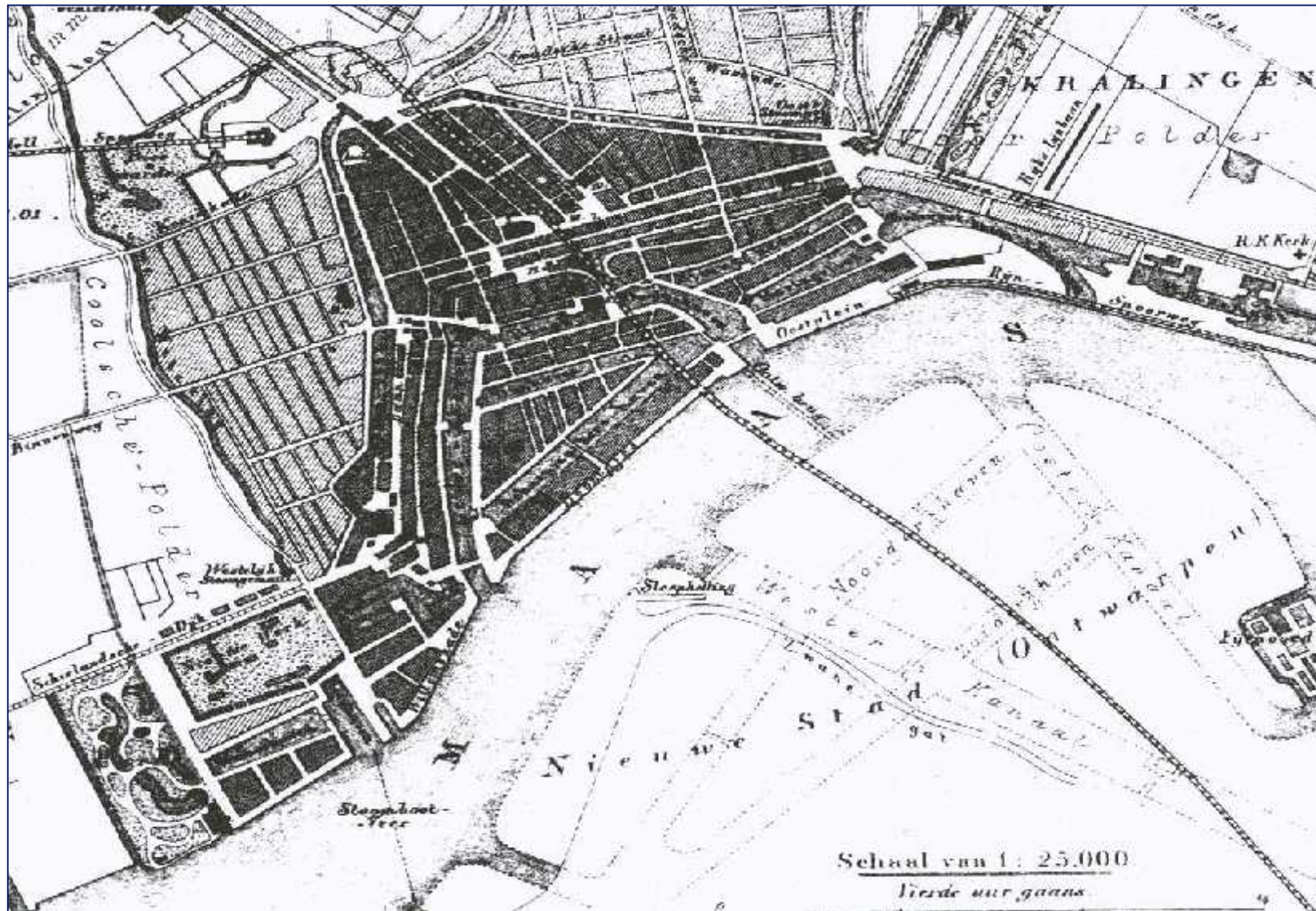
Introduction to Rotterdam



**614.000 Inhabitants, 1.200.000 in the region
nr. 1 port of Europe**



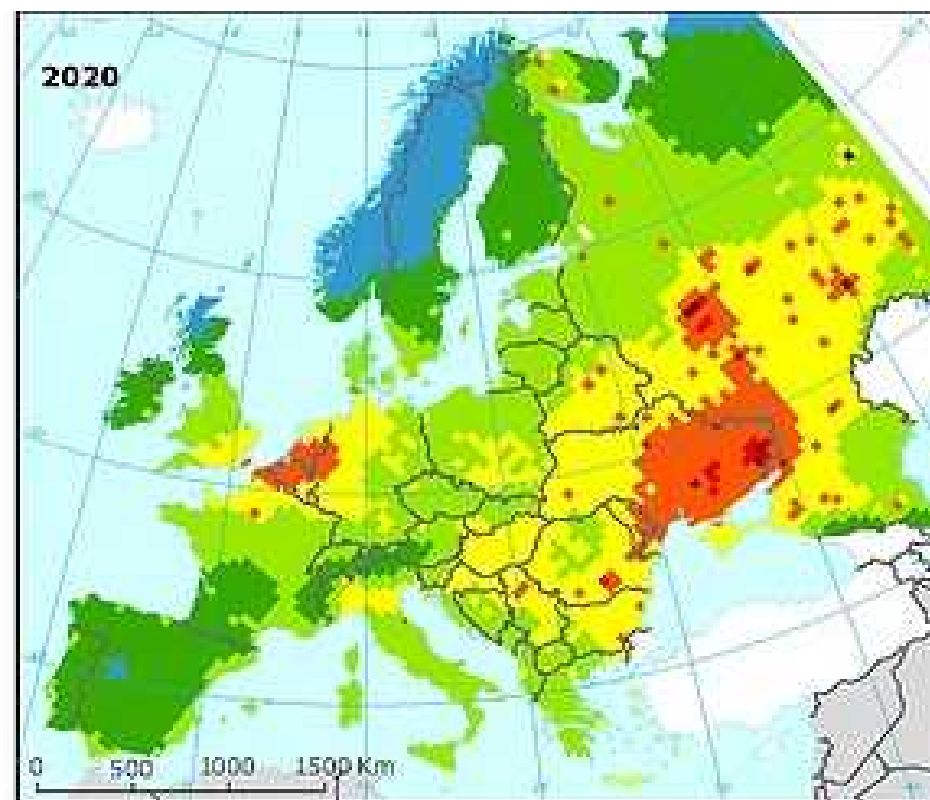
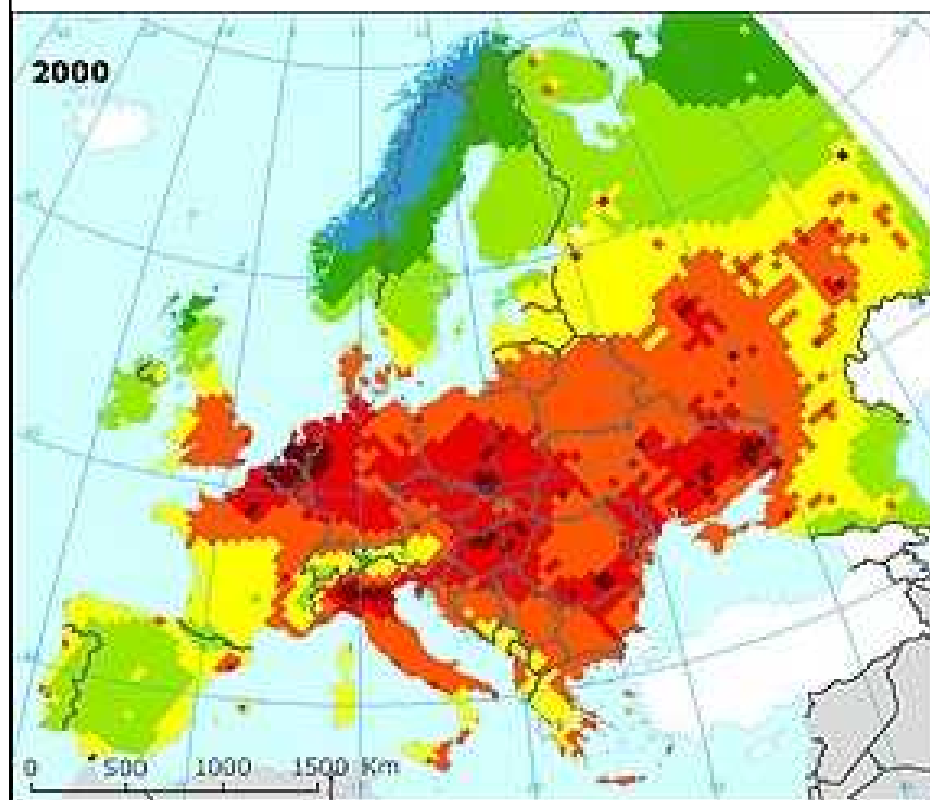
Rotterdam 1880



Rotterdam 2014



Air pollution



Loss in statistical life expectancy that can be attributed to man-made emissions of $PM_{2.5}$

Months 0-1 1-2 2-4 4-6 6-9 9-12 12-36 Outside report coverage



Complementary solutions for cleaner air and a healthier city



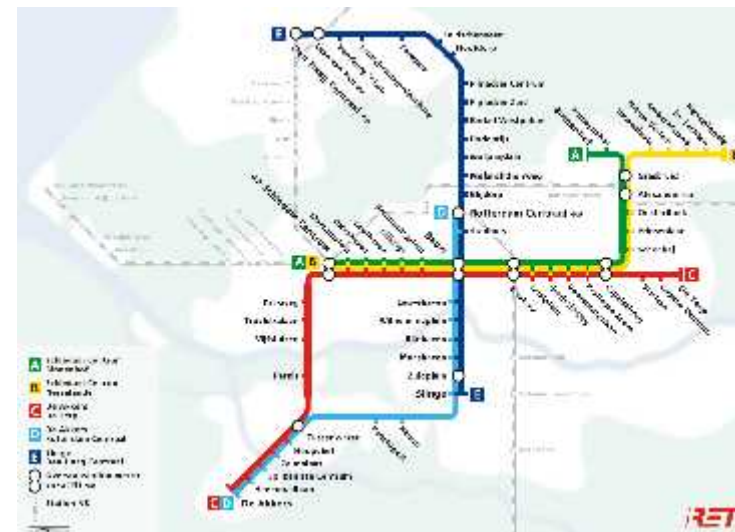
Pedestrian areas and connections



Cycling network



Parking strategy



Public Transport (Rotterdam subway)



Sustainable mobility



Clean use

Clean vehicles

Clean fuels





Rotterdam Electric



Rotterdam Electric: more than charging infrastructure

Innovative projects

Policy innovations

Communication

National & European cooperation

Fuel innovations: talking at national level

Hydrogen refueling station (3 in NL)

Attracting the market

Create own test cases – being frontrunner

Trial & error

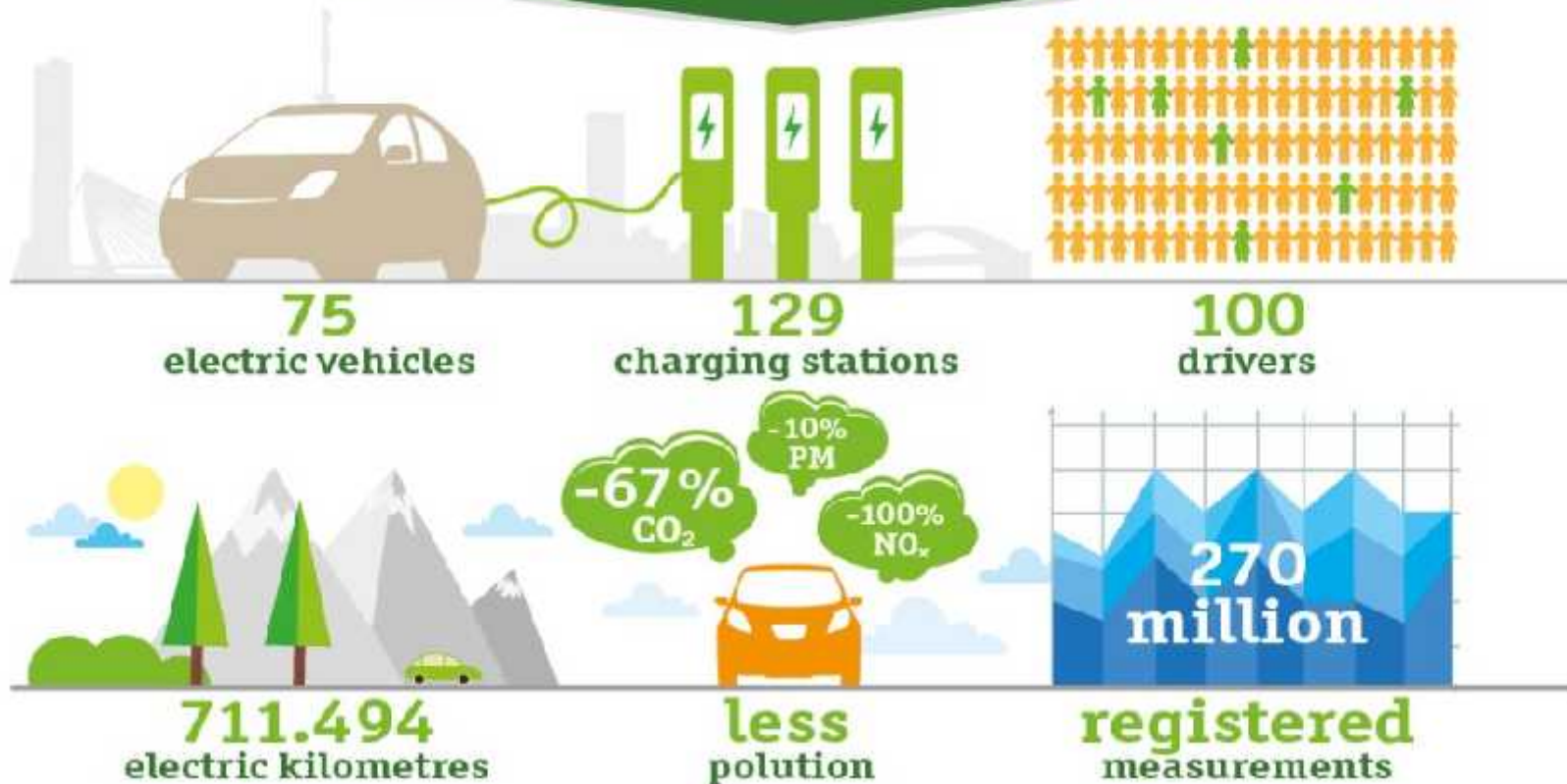


Rotterdam Tests Electric Vehicles



RotterdamTests
ElectricVehicles

from april 1st 2012 to april 1st 2013
we tested the following:



Zero-emission urban distribution



Zero emission taxi



Zero emission bus

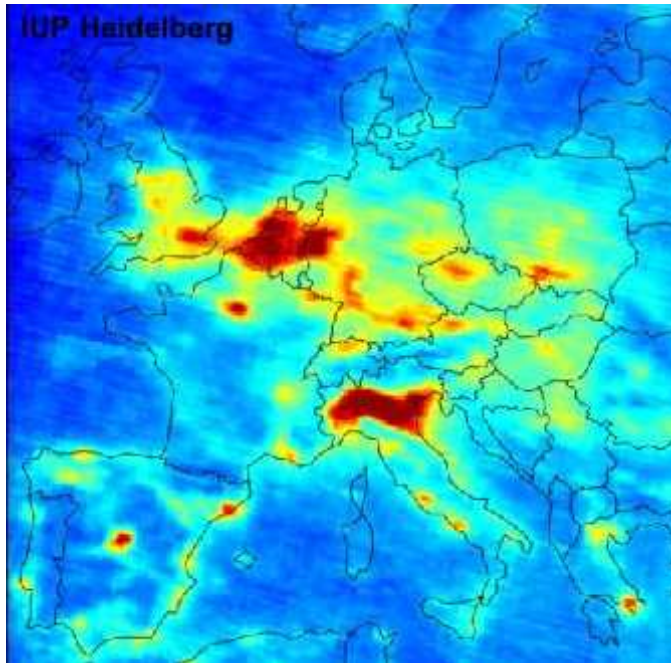


Electric Vehicle Center (HNR | EVC)



Purpose (why)

- Air quality and health
- Economic growth & branding
- Expectation inhabitants and responsibility public space



Approach, the city's role

1. Setting the frame (policy)

Who, where, when

2. Initiating

Attracting companies

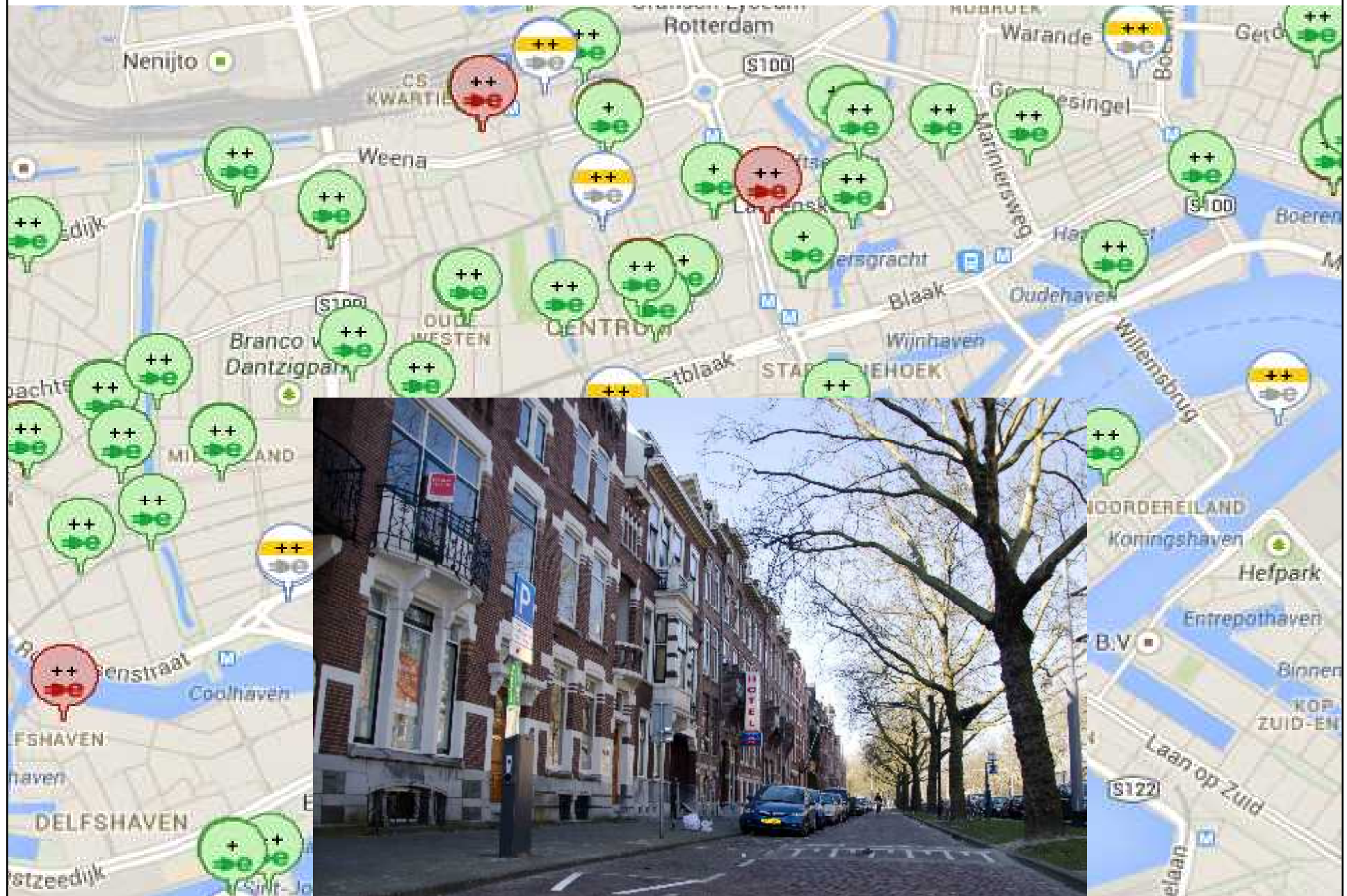
Working towards business cases

3. Withdrawal

Where possible



Charging points



History charging points

2011 – okt	First public charging point Netherlands in Rotterdam (e-Laad)
2012 – dec	100 charging points in Rotterdam (public, semi-public & private)
2013 – dec	584 points
2014 – jan	813 points
2014 – july	1.000 points in Rotterdam
2014 – sep	1.500 points larger Rotterdam area



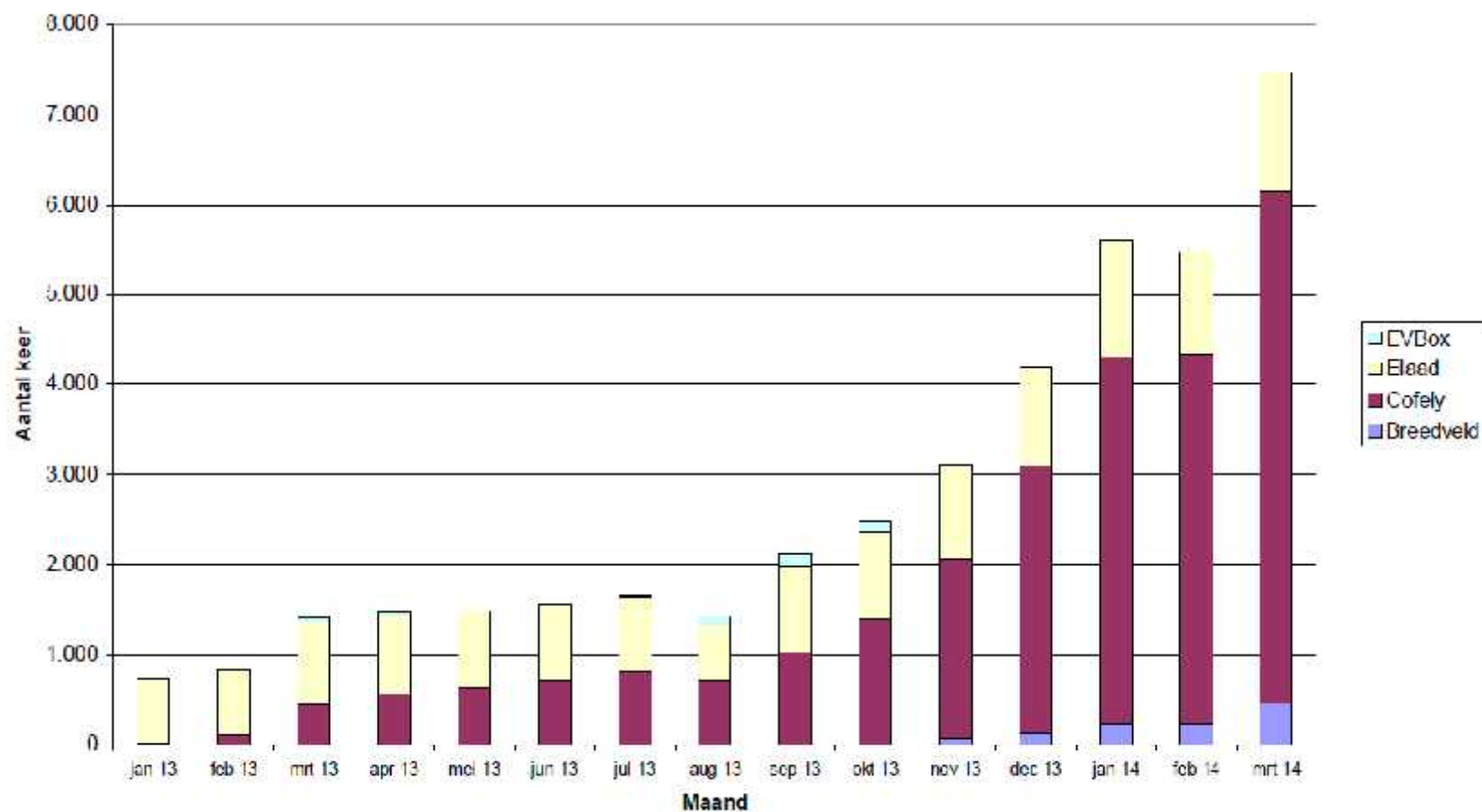
Usage of charging infrastructure (2013)

Ambition: 1000

now: 1000+

end 2014: 1650

Aantal keren gebruik oplaadpalen Rotterdam



Effects of charging points

	2013	Q1-2014
kWh	422.000	267.000
km	2.110.000	1.337.000
CO ₂	311 tons	231 tons
NO _x	538 kg	341 kg
PM ₁₀	5,3 kg	3,3 kg

Charging infrastructure reduces pollution



Communications and lobby

City branding

in 2013 1.168 media coverings
visits from USA, Canada, EU, NL
nominations Awards

EU Partners

LIFE, TIDE, Clean Fleets, FREVUE, EEO,
Polis, Hyer, sharing knowledge and
lobby

Collaboration

NKL, national vision on fuels, G4,
focusareas, FET,
RVO (keeping tabs on vehicles and infra)





Lutske Lindeman

l.lindeman@rotterdam.nl

+31 10 4896395

**Rotterdam
electric** 

