

First findings of mandatory SUMPs in Romania



ENDURANCE SUMP workshop, Brussels, 25 February

Background :

Sustainable Urban Mobility Plan is a strategic plan designed to satisfy the mobility needs of people and bussines in the cities and their surroundings for a better quality of life at present and in the future.

The development of Sustainable Urban Mobility Plans (SUMPs) for the major Romanian cities was agrees, as a priority by the Ministry of Regional Development and Public Administration and the European Commision, to become the frame of urban transport projects to be financed under the Operational Programme Regional Development for the 2014-2020 period with European Regional Development Fund.

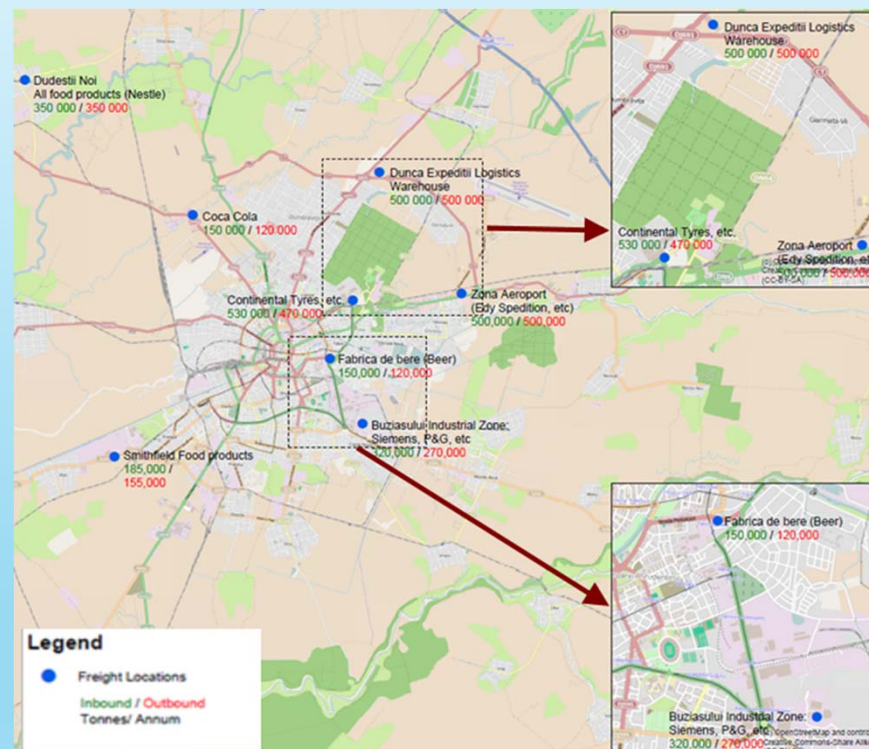
SUMP serves regional planning and mobility modelling the needs and priorities of Spatial Development Department of the territorial administrative unit, and follows five objectives:

- **Economy** – Improving the efficiency of transport services and transport infrastructure
- **Environment** – Reducing the need for motorised travel, and reducing the environmental impact and energy consumption of transport activity
- **Accessibility** - Ensuring an optimum level of accessibility in local areas and across the study area
- **Safety** – Providing a safe and secure environment for the population and workforce
- **Quality of Life** – Reducing the impact of transport infrastructure and activity on the urban environment

Economy

Improving the efficiency of transport services and transport infrastructure.

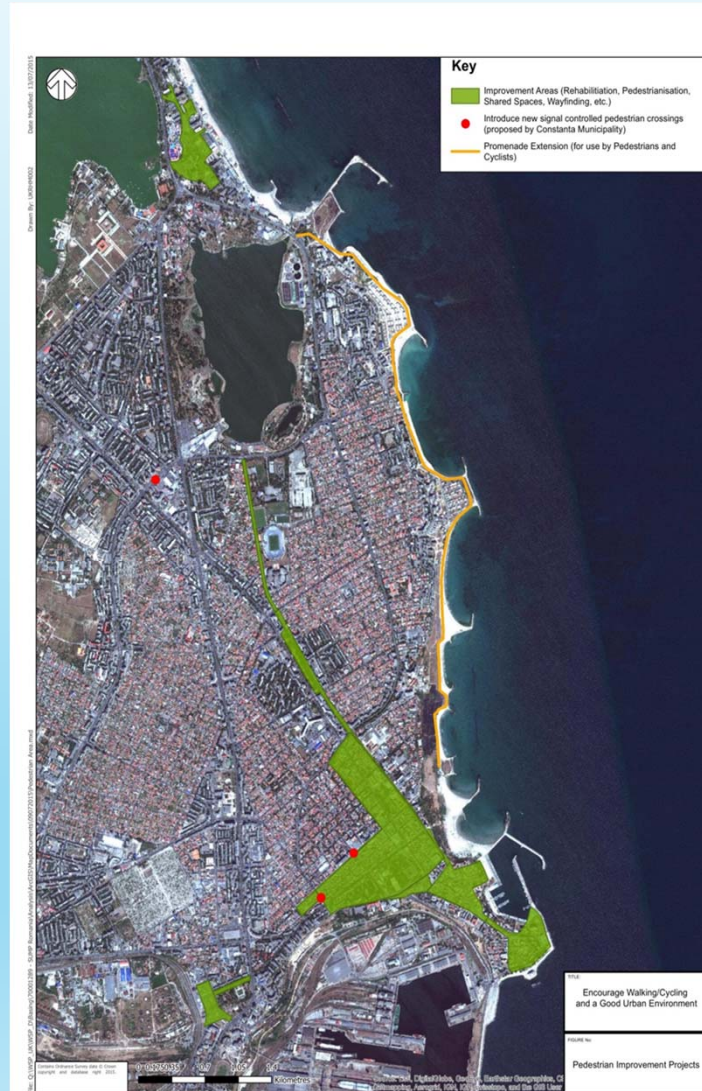
Timișoara study case



Environment

Reducing the need for motorised travel, and reducing the environmental impact and energy consumption of transport activity

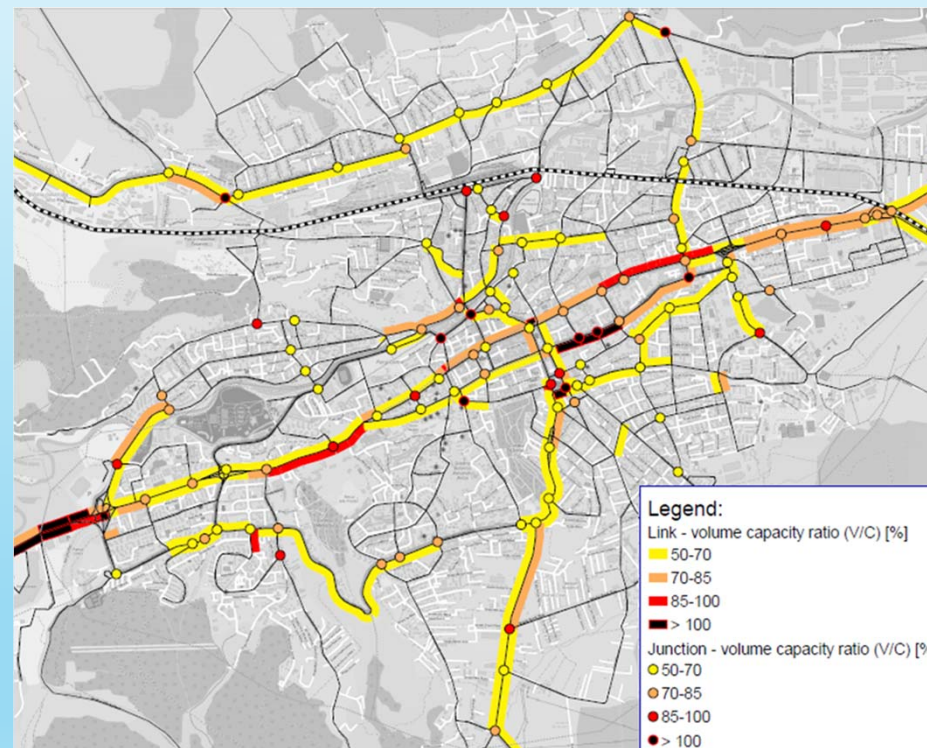
Constanța study case



Accessibility

Ensuring an optimum level of accessibility in local areas and across the study area

Cluj Napoca study case



Safety

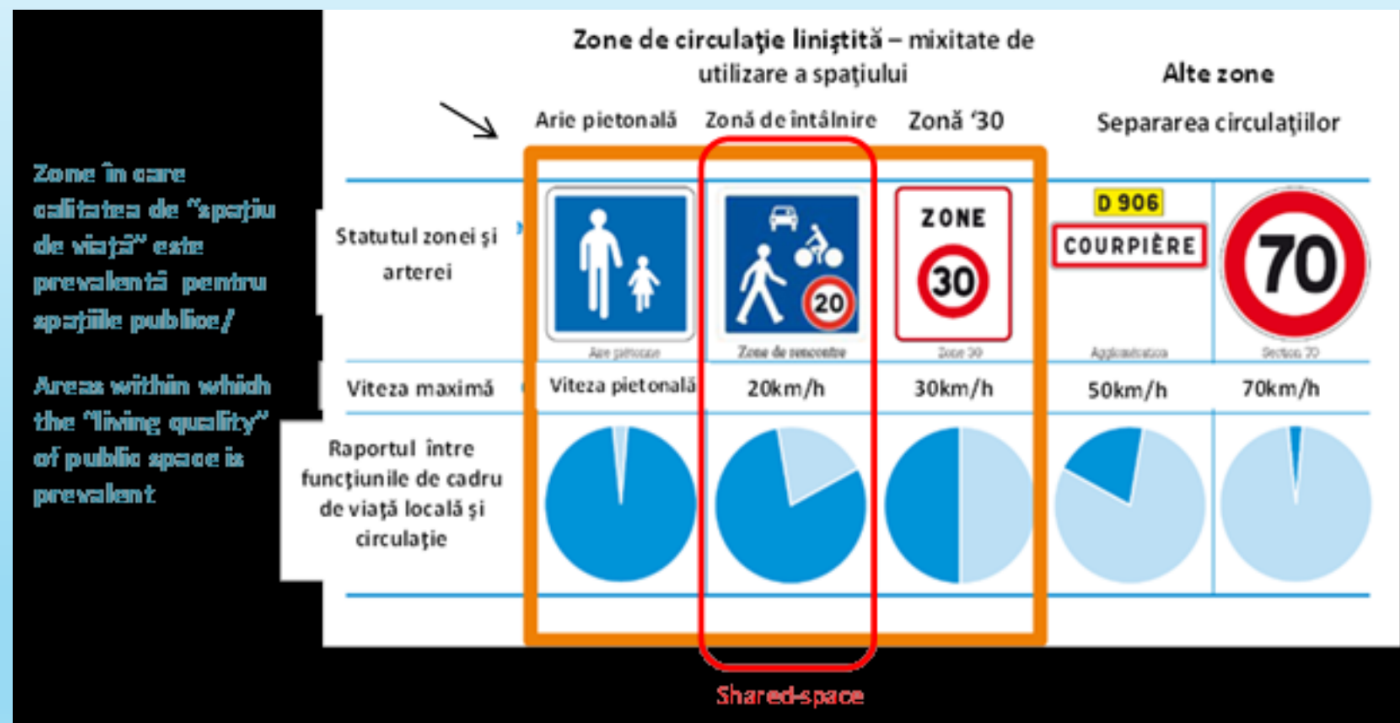
Providing a safe and secure environment for the population and workforce

Ploiești study case



Reducing the impact of transport infrastructure and activity on the urban environment

laşi study case



Follow – up :

The Romanian Law on town and country planning and the city planning was updated with the urban mobility plan concept. The Urban Mobility Plan is a :

1. Complementary strategy of territorial development documentation suburban / metropolitan and general urban plan (PUG);
2. Tool for strategic planning and territorial cohesion by which is related to spatial development of towns and peri-urban area / metropolitan with the needs of mobility and transport of persons and goods;
3. Urban Plan is the main target localities accessibility in better integration of different modes of transport and mobility;
4. Urban Mobility Plan addresses all forms of mobility and transport, including public and private transport, freight and passengers, motorized and non-motorized moving or stationary;
5. Urban Mobility Plan territory includes territorial administrative unit within the PMU generated in the territorial waters or metropolitan administration, which can be defined by a specialized study.

Thank you!

ing. Cezar Grozavu, public manager

Ministry for Regional Development and Public Administration, Apolodor Str. 17, Sec.5, Bucharest

cezarcgrozavu@mdrap.ro

www.inforegio.ro / www.mdrap.ro

