



# ***EU loves SUMPs***

**Isabelle Maës, European Commission**  
**Christof Marx, EASME**



European  
Commission

# Why & What

## The starting point

Transport provides vital functions to cities, enabling economic growth and access to jobs

At the same time, urban transport is still focused on conventionally-fuelled passenger cars, leading to:

- **Congestion**
- **Climate change** impact: urban transport accounts for 23% of **CO<sub>2</sub>** emissions from transport
- **Health impact** related to ambient **air quality** (NO<sub>x</sub>, PM emissions)
- **Road accidents**: urban areas still account for 40% of all road fatalities (approx. 11.000 per year)



## What the EU does

- Transport is a shared responsibility between the EU and the Member States
  - The **subsidiarity principle** applies
- Urban mobility is essentially a local responsibility; however local authorities should not be left alone
- That is why there is a long tradition of EU support:
  1. Setting the policy framework
  2. Offering funding & financing
  3. Facilitating the exchange of experience and best practice
  4. Raising awareness



## The 2013 Urban Mobility Package

[http://ec.europa.eu/transport/themes/urban/ump\\_en.htm](http://ec.europa.eu/transport/themes/urban/ump_en.htm)

- Calls for action from the Member States
- Commits to reinforce EU support
- Gives help for cities to develop Sustainable Urban Mobility Plans
- Gives recommendations for coordinated action in: Urban logistics, Urban access regulations, ITS deployment in urban areas, Urban road safety



## Help for cities to develop SUMP

- Member States are invited to assess their current urban mobility and develop an approach that ensures coordinated action at national, regional and local level
- The Commission proposes a concept for SUMP (content, process) based on experiences from across the EU
- The Commission commits to setting up a Platform on SUMP to coordinate EU action and provide a one-stop-shop portal ([www.eltis.eu](http://www.eltis.eu))



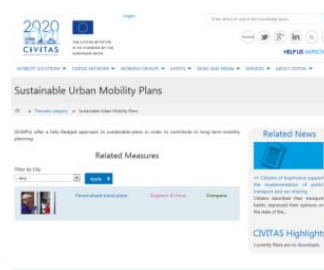
European  
Commission

# A European Platform



European  
Commission

# A plethora of SUMP-related projects



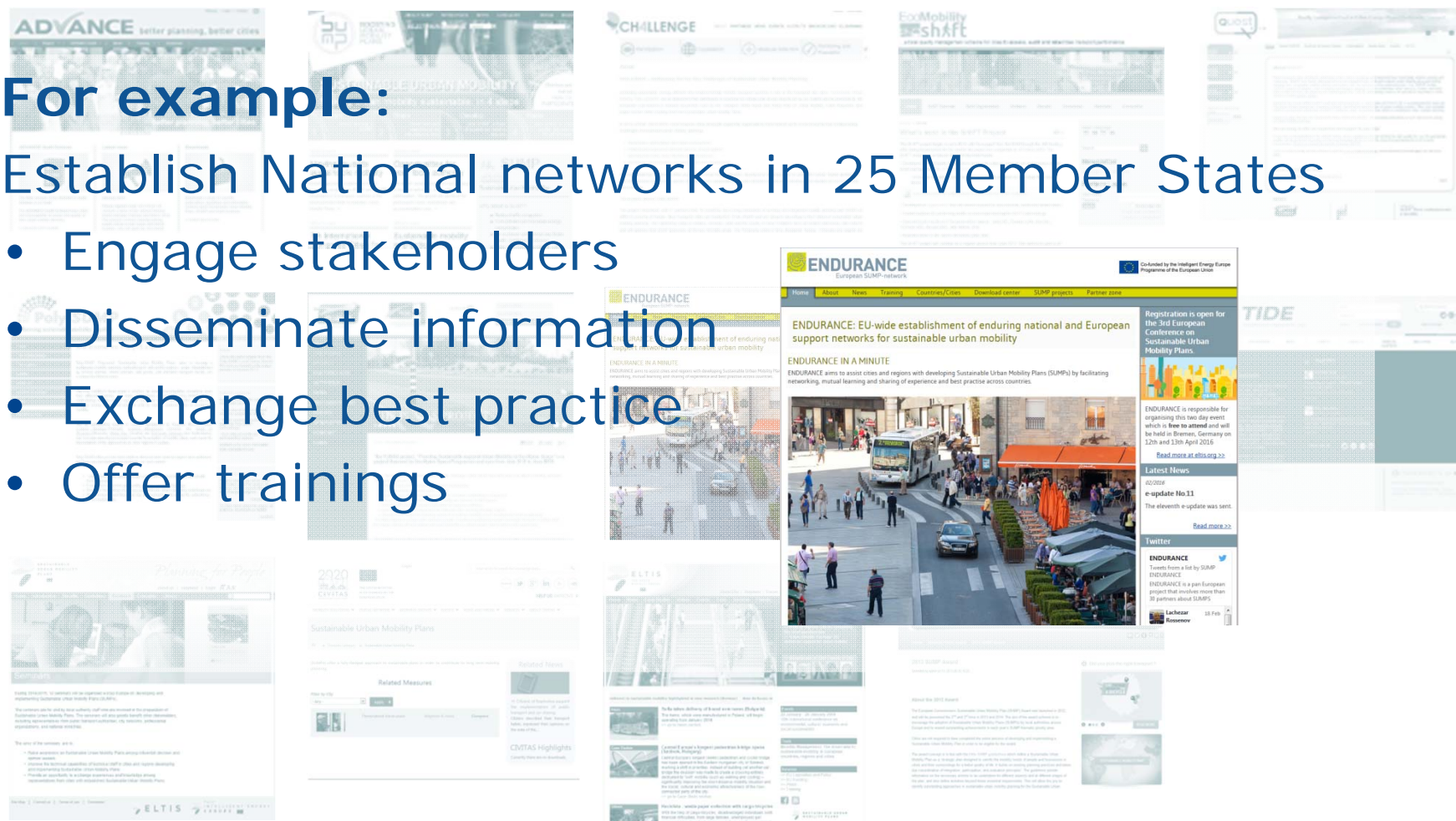


# A plethora of SUMP's related projects

For example:

Establish National networks in 25 Member States

- Engage stakeholders
- Disseminate information
- Exchange best practice
- Offer trainings



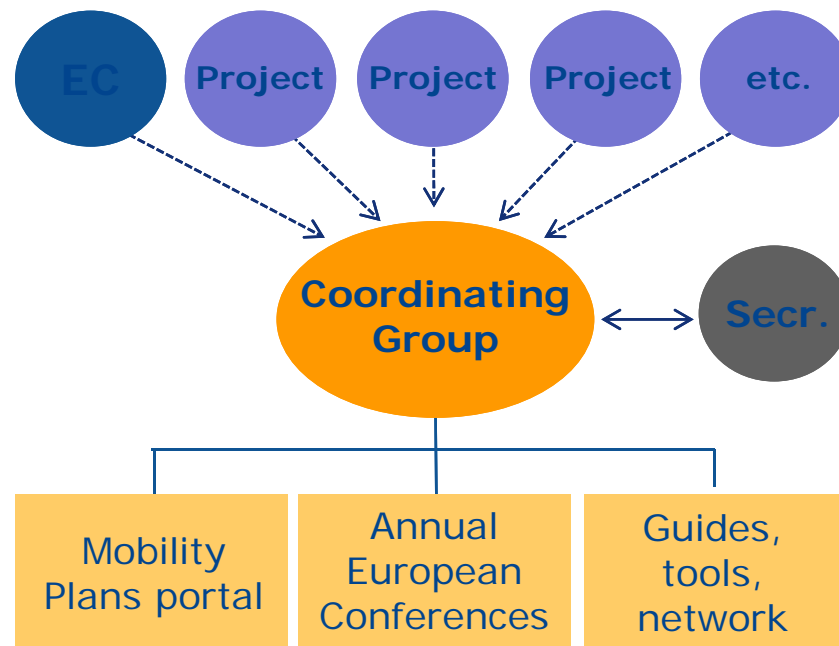


## Platform objectives

- Support the further development of the SUMP concept and tools
- Provide interested parties with a "one-stop shop"
- Realise synergies from coordination and cooperation across the different actions
- Increase the visibility for EU-supported actions on SUMPs

## Platform elements

- Coordinating Group





## Platform elements

- Coordinating Group
- Common visual identity





European  
Commission

## Platform elements

- Coordinating Group
- Common visual identity
- Portal on [www.eltis.org](http://www.eltis.org)

The screenshot shows the Eltis website homepage. At the top, there is a navigation bar with the Eltis logo, the tagline 'The urban mobility observatory', and links for 'Search', 'Contact us', 'FAQ', 'Cookies', and 'Legal notice'. Below the navigation bar, there are four main sections: 'DISCOVER', 'RESOURCES', 'PARTICIPATE', and 'MOBILITY PLANS'. A large red arrow points to the 'MOBILITY PLANS' section. Below these sections, there is an 'Eltis Spotlight' section with a call to action for the 'EU Sustainable Energy Awards'. To the right, there is a 'Friends of Eltis' section with a list of activities and a 'Become a Friend' button. At the bottom, there are sections for 'Case studies' and 'News'.



## Platform elements

- Coordinating Group
- Common visual identity
- Portal on [www.eltis.org](http://www.eltis.org)
- Annual conferences

*'Planning the efficient city'*

□ [www.eltis.org/SUMP2016](http://www.eltis.org/SUMP2016)

Der Senator für Umwelt,  
Bau und Verkehr



**3<sup>rd</sup> European Conference on  
Sustainable Urban Mobility Plans**

**Save the Date**

**12 -13 April 2016**

Bremen, Germany



In collaboration with the





European  
Commission

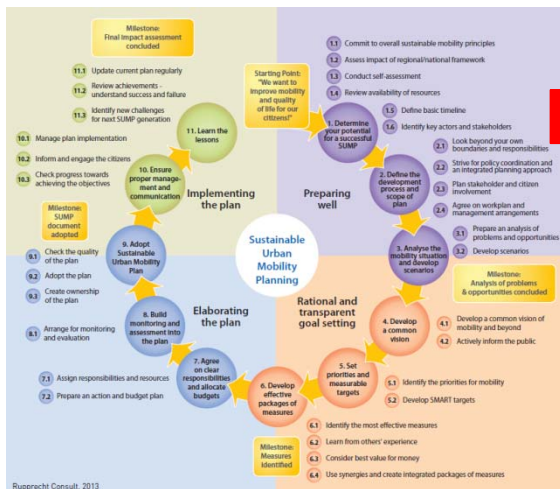
# Assessing a SUMP



European Commission

# The SUMP Self-Assessment Tool

- Builds on SUMP concept
- Reflects process of the SUMP Guidelines:



[www.eltis.org/mobility-plans](http://www.eltis.org/mobility-plans)



## SUMP Self-Assessment Overview

✓ Step 1 - Determine your potential for a successful SUMP

### Step 2 - Define the development process and scope of plan

Step 3 - Analyse the mobility situation and develop scenarios

Step 4 - Develop a common vision and engage citizens

Step 5 - Set priorities and measurable targets

Step 6 - Develop effective packages of measures I

Step 6 - Develop effective packages of measures II

Step 7 - Agree on clear responsibilities and allocate funding

Step 8 - Build monitoring and assessment into the plan

Step 9 - Adopt Sustainable Urban Mobility Plan

Feedback on the tool

### Step 2 - Define the development process and scope of plan

The *Sustainable Urban Mobility Plan* development process needs to be tailored to the local situation. This includes as a crucial step the definition of the geographical scope of the plan, which should cover the functioning urban area. Stakeholder cooperation and policy integration are other fields that need to be addressed in this phase, which should be concluded with an agreement on the work plan and management arrangements. For more information please read the section on [Step 2](#) in the SUMP Guidelines

13. Has a [cooperation process](#) been established by all [neighbouring authorities](#) on the spatial coverage of the [SUMP](#)?

Foundation Question

Yes	No
-----	----

14. Does the [SUMP](#) cover the ["functional city"](#) (i.e. an area defined by main commuter flows) that goes beyond administrative boundaries?

Yes	No
-----	----

15. Have you and [neighbouring authorities](#) agreed on roles and responsibilities for [SUMP](#) development?

Yes	No
-----	----

Go back to Step 1

Go back to Main Menu

Continue to Step 3







European  
Commission

# Further developments



## What's next?

- The Urban Agenda developed by DG REGIO will establish partnerships on urban mobility, which will include the SUMP process
- The Commission will come forward with urban mobility indicators and a scoreboard, which will serve amongst others the first phase of the SUMP process
- EASME will soon publish, under the CHALLENGE project, four guidance documents on specific parts of the SUMP process i.e. 1) Participation (2) Institutional Cooperation (3) Measures selection and (4) Monitoring and Evaluation
- JASPERS will organize in the 2<sup>nd</sup> half of this year SUMP trainings for countries not covered in 2015 and who have expressed interest



**Thank you for your attention!**

**Contacts:**

[Isabelle.Maes@ec.europa.eu](mailto:Isabelle.Maes@ec.europa.eu)

[Christof.Marx@ec.europa.eu](mailto:Christof.Marx@ec.europa.eu)