



Improving local planning processes and developing quality sustainable urban mobility plans

Session: Urban Mobility in Transition

Susanne Böhler-Baedeker, Rupprecht Consult – Forschung & Beratung GmbH

Polis Conference 2016

1 December 2016, Rotterdam, The Netherlands

- Achievements and take-up of the SUMP concept
- Assessment of SUMP performance
- Outlook about future activities for quality SUMP

“The EU loves SUMP”



- EU policy framework:
 - Action Plan on Urban Mobility (2009)
 - Transport White Paper (2011)
 - Urban Mobility Package (2013)
- Recommends member states to develop a national framework and support cities
- Finances research on and coordination of SUMP activities
- SUMP as a requirement for financial support (Structural and Investment Funds)



Images: BKK Centre for Budapest Transport

- Several member states have created a national framework to promote and guide SUMP development
- Many European cities are interested and would like to develop a SUMP
- Numerous EU projects contributed to cities being aware of the concept and seeing an added value
- EU projects and programmes have already supported cities in developing a SUMP
- There is a strong need for new planning techniques and instruments
- Numerous instruments exist, but:
 - Most instruments are only available in English
 - It is unclear, for which planning stage they are useful
 - External support is required to use them



Image: Rupprecht Consult

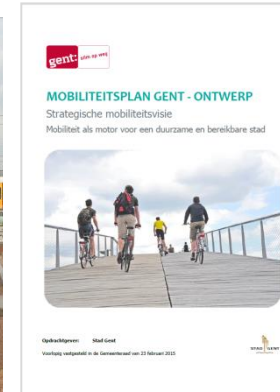
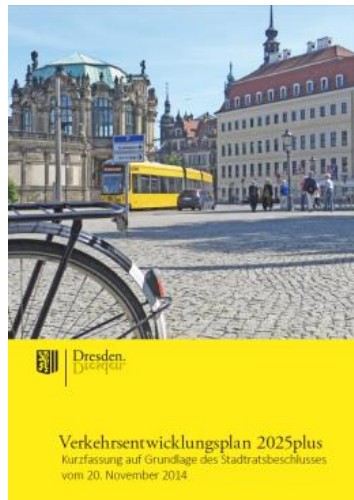
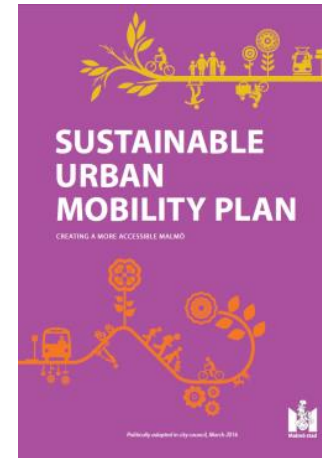


Image: BKK Centre for Budapest Transport

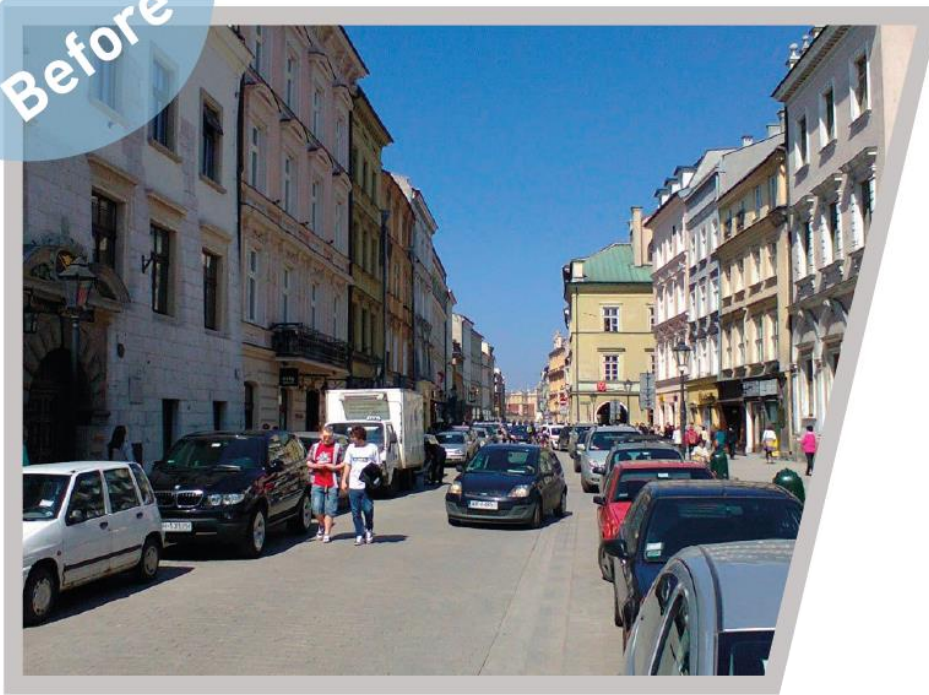


Image: City of Ghent

A new generation of transport planning: SUMP is becoming mainstream



Before



Krakow, Poland

Before



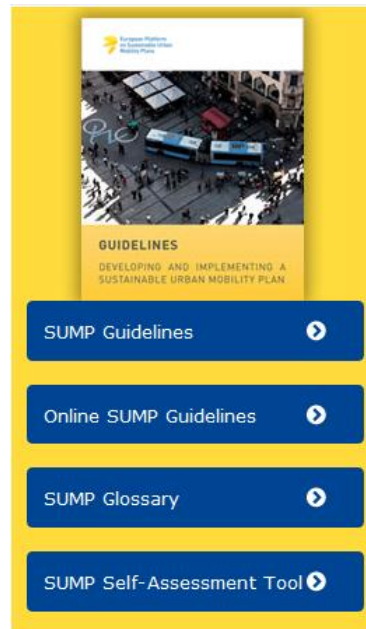
Ghent, Belgium

Before



Budapest, Hungary

Multiple SUMP knowledge resources and SUMP activities available



- Assessment and auditing
- Awards and campaigns
- Best practices
- Groups and platforms
- Guidance
- Tools
- Training material
- Annual SUMP conference



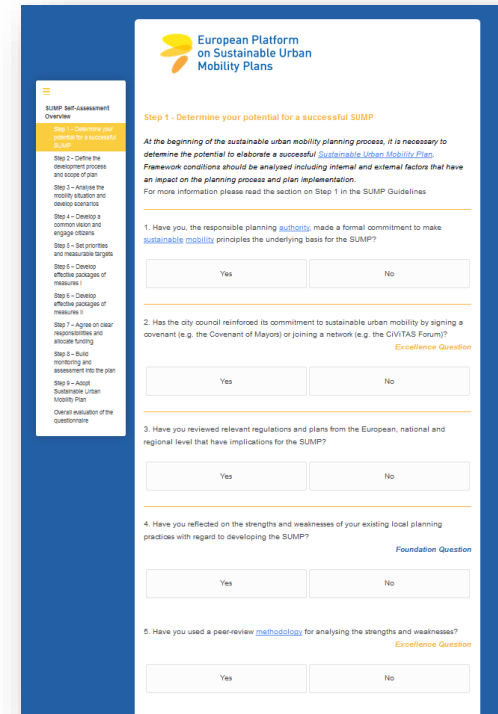
- European Commission's Urban Mobility Package (2013, Annex 1):
*"Local Planning Authorities should have **mechanisms to ensure the quality and validate compliance** of the Sustainable Urban Mobility Plan with the requirements of the Sustainable Urban Mobility Plan concept"*
- Various Operational Programmes in the EU's Structural and Investment Funds require local authorities to develop Sustainable Urban Mobility Plans

Cities, their stakeholders as well as Member States and European institutions require a **clear set of criteria** to decide whether a given plan does indeed meet the criteria of an "SUMP", as set out by the European Commission.

SUMP Self-Assessment: a tool to test the compliance with EU-policy



- Based on the **EC's SUMP concept** and **Guidelines** as presented in the Urban Mobility Package
- **Online** and **free to use**
- Simple concept of **100 yes-no questions**; each question represents **one point**
- An assessment of the SUMP **preparation process** and whether essential policy areas are covered as part of the **plan's content**
- **Foundation Questions** to set a minimum level of SUMP compliance and **Excellence Questions** to identify front-runners
- A system that allows **anonymous assessment**
- An online tool that is part of a **learning environment**



SUMP Self-Assessment Overview

Step 1 - Determine your potential for a successful SUMP

Step 1 - Determine your potential for a successful SUMP

At the beginning of the sustainable urban mobility planning process, it is necessary to determine the potential to elaborate a successful Sustainable Urban Mobility Plan. Framework conditions should be analysed including internal and external factors that have an impact on the planning process and plan implementation. For more information please read the section on Step 1 in the SUMP Guidelines.

1. Have you, the responsible planning authority, made a formal commitment to make sustainable mobility principles the underlying basis for the SUMP?

Yes No

2. Has the city council reinforced its commitment to sustainable urban mobility by signing a covenant (e.g. the Covenant of Mayors) or joining a network (e.g. the CIVITAS Forum)?

Yes No

3. Have you reviewed relevant regulations and plans from the European, national and regional level that have implications for the SUMP?

Yes No

4. Have you reflected on the strengths and weaknesses of your existing local planning practices with regard to developing the SUMP?

Yes No

5. Have you used a peer-review methodology for analysing the strengths and weaknesses?

Yes No

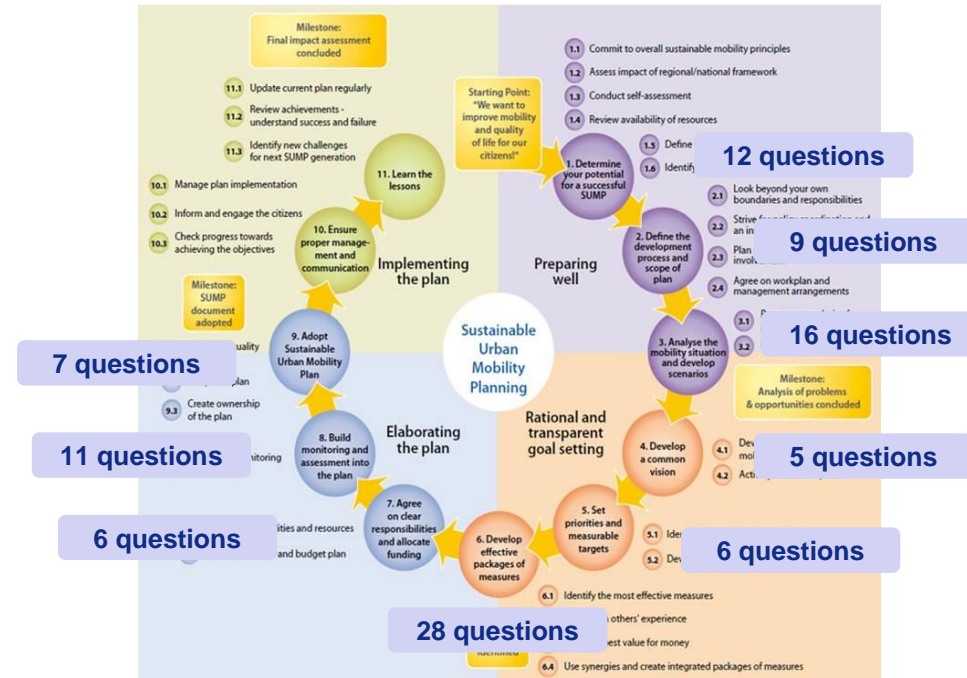
Overall evaluation of the questionnaire

Available on Eltis
www.eltis.org/mobility-plans/theSUMPprocess

Structure of the SUMP Self-Assessment

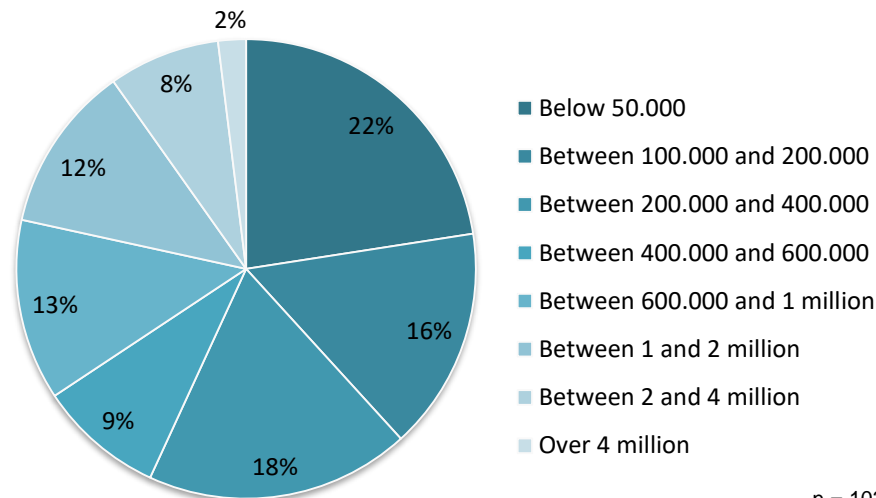
Each question is **labelled** with a **SUMP characteristic**:

- Long-term **vision** and clear **implementation plan**
- **Participatory** approach
- Balanced consideration of all **transport modes**
- Sectoral, vertical and spatial **integration**
- **Assessment** of current and future performance & cost-benefit analysis
- **Monitoring**, plan revision and reporting



- The SUMP Self-Assessment in numbers:
 - More than **260 users** visited the SUMP Self-Assessment in the trial phase (Sep 2015) and implementation phase (Oct 2015 – Aug 2016)
 - **88%** of respondents from **Europe**, **12%** from **non-EU countries**
 - **77%** of respondents indicated that they are assessing **their city's first SUMP**

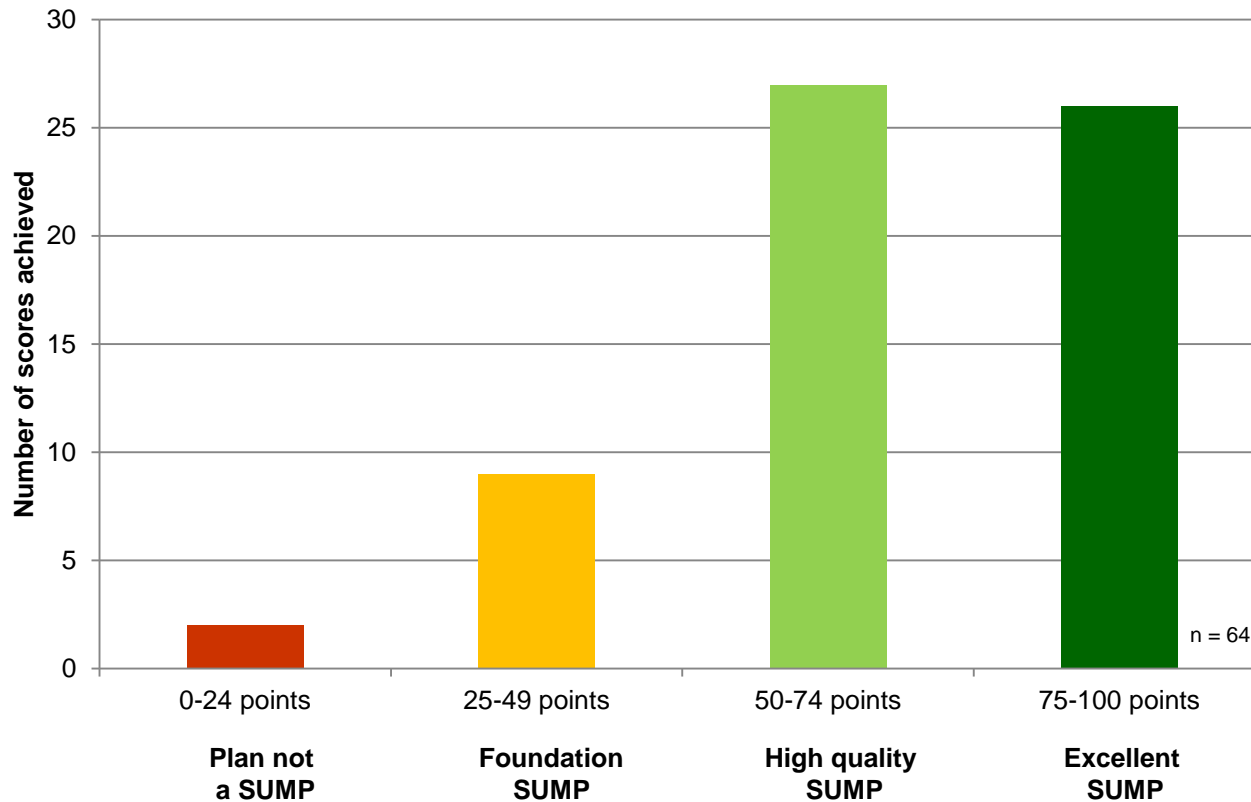
Population size of the city (based on geographic area covered by the SUMP)



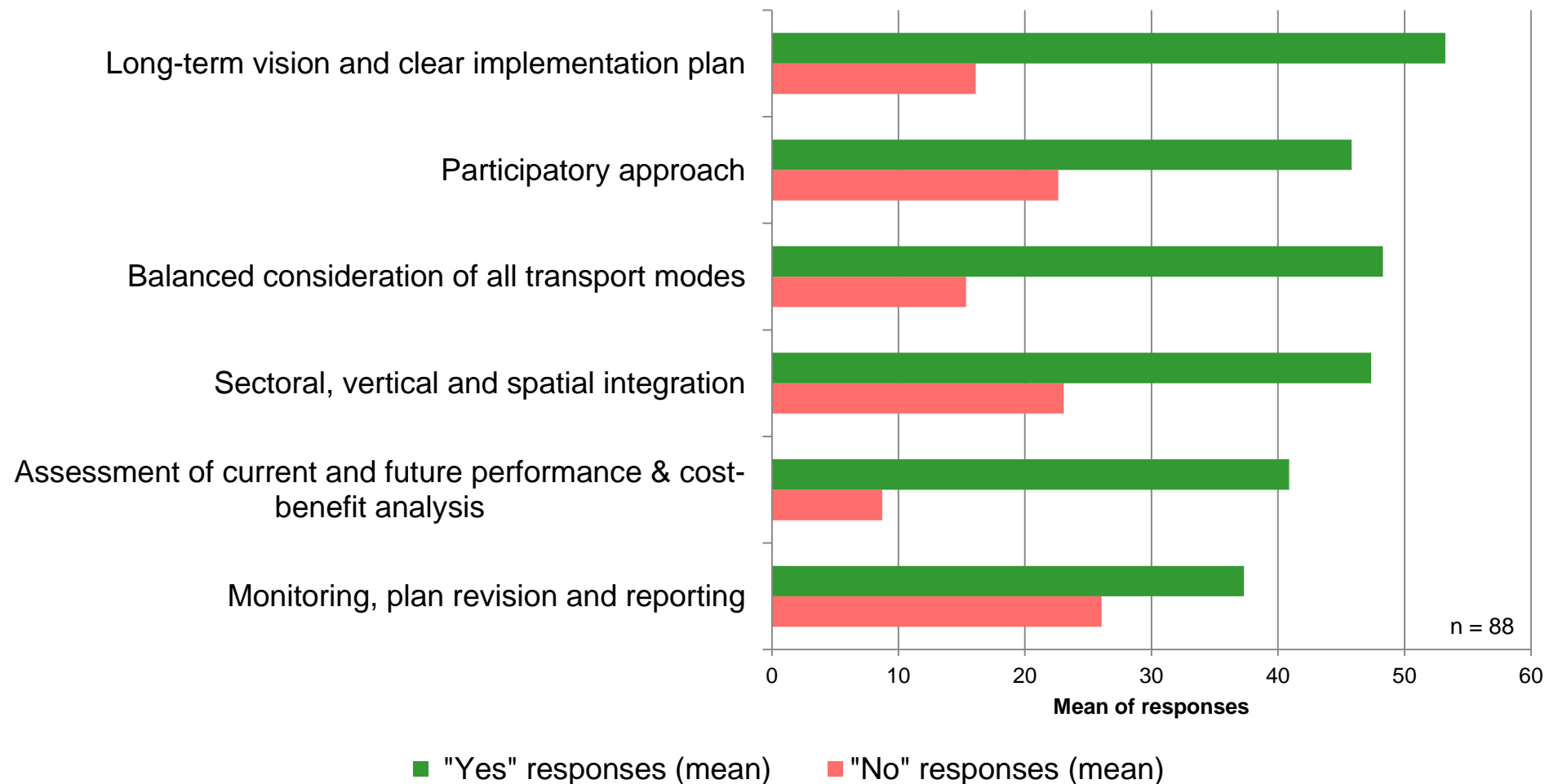
n = 102

Analysis of first year results

Score ranges and SUMP classification



- More than **80%** of respondents **have passed the SUMP Self-Assessment**
- The average score is **67 points** (incl. assessments that achieved 0-24 points)



Analysis of first year results

Easy and difficult questions

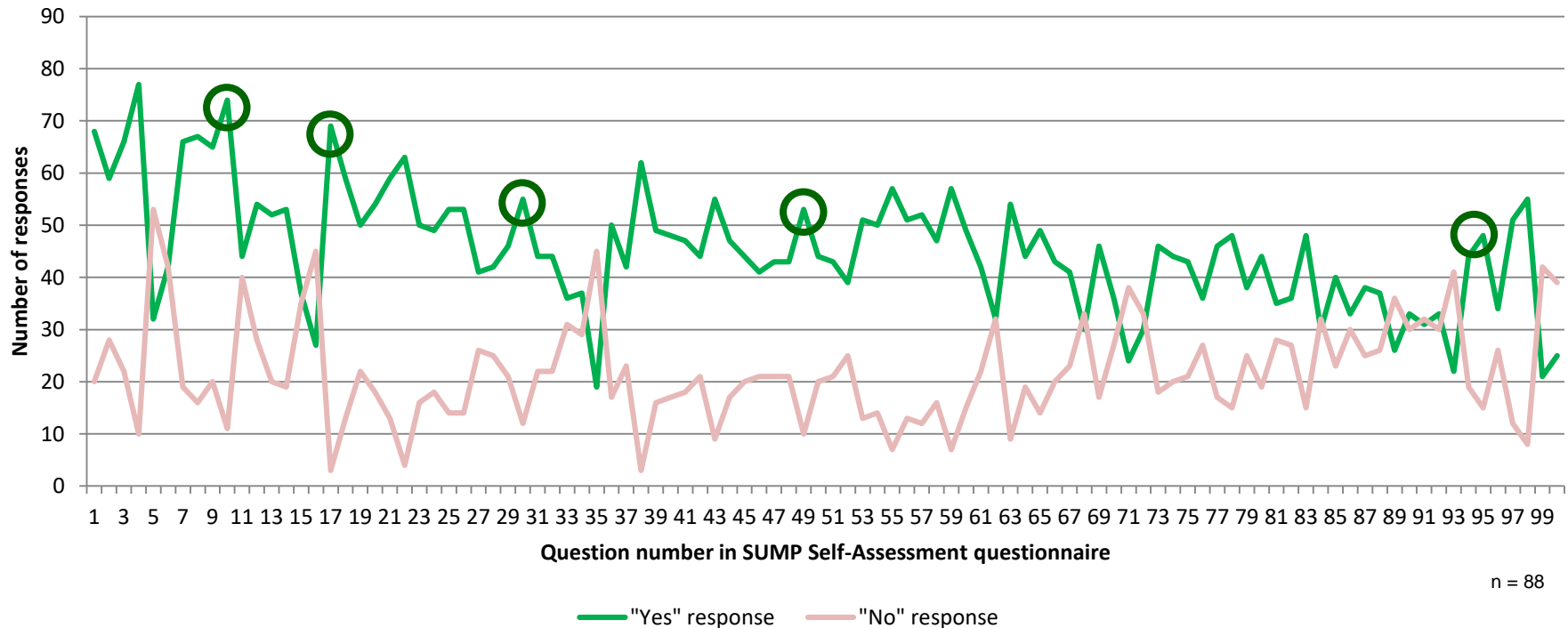
Q10: Have you carried out an **analysis of stakeholder constellations**?

Q30: Have you **prioritised the identified problems**?

Q49: Does the SUMP make clear how the **selected measures** will contribute to the **achievement** of the agreed **vision, objectives and targets**?

Q17: Does the SUMP refer to **policies and plans**, which already **exist or are being developed** on the local level?

Q95: Have you published a **final draft** of the SUMP to provide **stakeholders and citizens** with the opportunity to make **final comments**?



Analysis of first year results

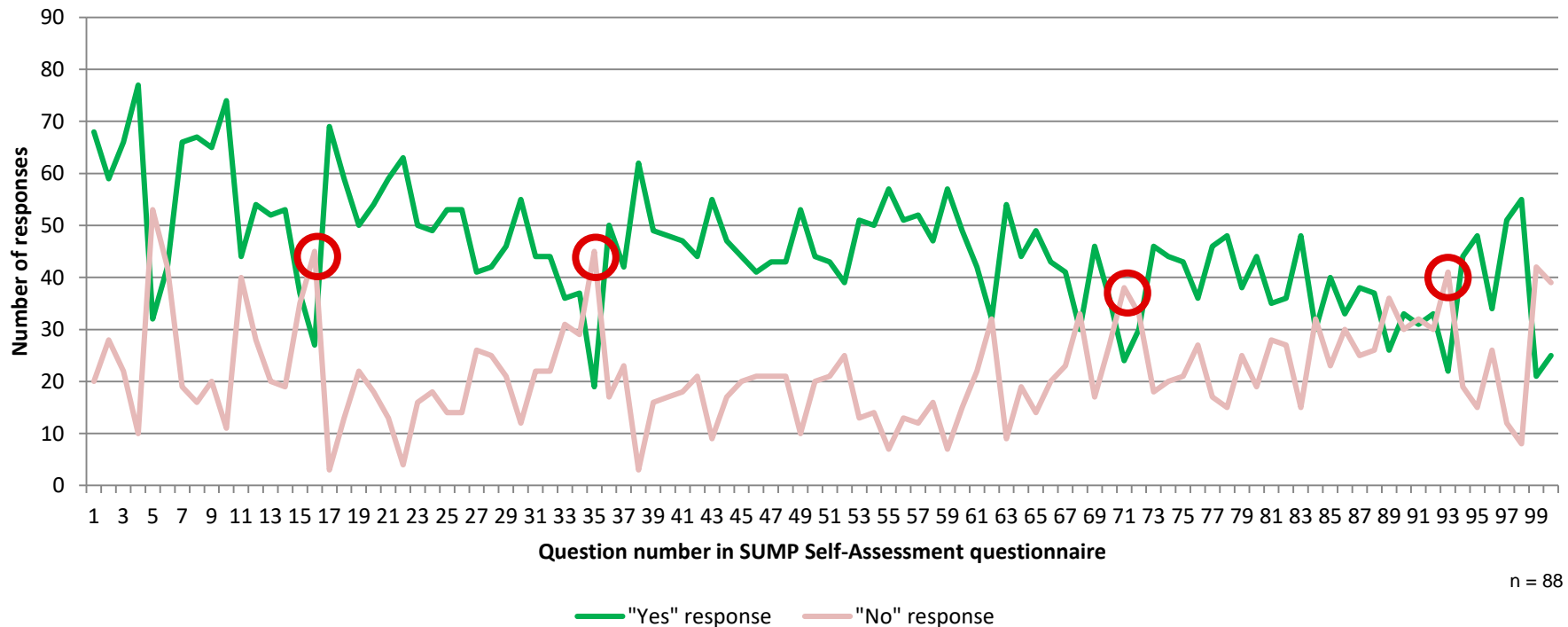
Easy and difficult questions

Q16: Have you established a **SUMP development team across neighbouring authorities** that has met on a regular basis?

Q35: Did the analysis of SUMP scenarios include an appraisal of the **resilience of the mobility system** in relation to expected and unexpected events for the spatial area of the SUMP?

Q71: Have you assessed the **external costs** and **benefits** associated with the implementation of measures and packages of measures?

Q93: Have you foreseen mechanisms for the **interactive engagement** of stakeholders and citizens during **SUMP monitoring and evaluation**?



- **Strong interest** in the tool by planning authorities and other stakeholders
 - **Planning practices** are reflected with the tool
 - Primary use after **plan completion**
 - **Training** and **capacity building** requirements in certain thematic areas
 - Due to anonymity and principle of trust (**self-assessment**), reliability of data is limited to a certain extent
 - **Operationalisation** of questions needs further attention
 - Complexity versus simplicity: **multi-aspects of questions**
 - **Foundation question** needs special attention
 - **Guidance requirement** due to: language, terminology, knowledge on SUMP guidelines
- **Revision** of the Self-Assessment Tool under SUMP-Up
- Wording
 - Interpretation of question
- Element of **project evaluation**
- Ex-post and ex-ante evaluation
 - Consideration of context conditions

- Based on a comprehensive analysis of the user needs

*large-scale survey,
interviews and
focus groups*

VALIDATE

- Based on a comprehensive analysis of the user needs

*large-scale survey,
interviews and
focus groups*

- Online SUMP Tool Inventory
 - *Collection of top 50 tools*
 - *Advanced search function for local context conditions*
 - *Interactive platform with user reviews*
- Guidance on SUMP measures & financing
- Enhanced SUMP Self-Assessment Scheme

SYSTEMISE

VALIDATE

SUMPs-Up promotes quality SUMPs

- Based on a comprehensive analysis of the user needs

*large-scale survey,
interviews and
focus groups*

- Online SUMP Tool Inventory
 - Collection of top 50 tools
 - Advanced search function for local context conditions
 - Interactive platform with user reviews
- Guidance on SUMP measures & financing
- Enhanced SUMP Self-Assessment Scheme

- Innovation Pilot Pool
 - Financial support to 100+ planning authorities & experts
- Urban Learning Alliances
 - Expert support, team learning and peer-to-peer exchange
 - Online courses, workshops, study visits and webinars
- Learning programme
 - Tailored capacity-building for 200+ individual mobility planners

ACCELERATE

SYSTEMISE

VALIDATE

Developing a SUMP tool inventory & training how and when to use specific tools



1. Identification of existing SUMP tools

- Quality assessment, participatory planning, regional cooperation, integrated planning, analysis and modelling, measure selection, benchmarking



50 best tools
identified
FEB2017

2. Comprehensive assessment

- Product type, SUMP stage, target group, duration, required input, copyright, year of last update, etc.
- Tool packages tailored to specific city profiles



Tools
assessed
AUG2017

3. Building the online SUMP Tool Inventory

- Innovative search and filter functionality
- Interactive platform with user reviews



Online
NOV2017

Thank you!

Improving local planning processes and developing quality sustainable urban mobility plans

Rupprecht Consult – Forschung & Beratung GmbH

Susanne Böhler-Baedeker

Feedback and questions welcome

sump@rupprecht-consult.eu

www.rupprecht-consult.eu

Rupprecht Consult has developed the SUMP Self-Assessment which is disseminated in the framework of the EU co-funded project CH4ALLENGE. The Self-Assessment Scheme is made available free of charge for non-commercial use and is subject to a Creative Commons licence ("attribution, non-commercial, no derivatives").



THE CIVITAS INITIATIVE
IS CO-FINANCED BY THE
EUROPEAN UNION