



EUROPEAN CITIES AND REGIONS NETWORKING
FOR INNOVATIVE TRANSPORT SOLUTIONS

Cooperation between Polis and THE PEP: Pan European Programme on Transport Health and Environment

8 April 2014
Brussels



Paul Curtis
London European Partnership for Transport

Polis È THE PEP Cooperation

THE PEP *Transport, Health and Environment*
Pan-European Programme



THE PEP È What is it?

- Pan European Programme on Transport Health and Environment
- Established 2002
- 56 European and Asian Ministry members (&US)
- Run by the WHO and UNECE
- Develops the linkages between TH&E policy and practice at ministerial level AND delivery at the local level:
HORIZONTAL + VERTICAL = CHANGE
- Develop tools, business cases and advocacy work
- Polis has cooperated with THE PEP for two years



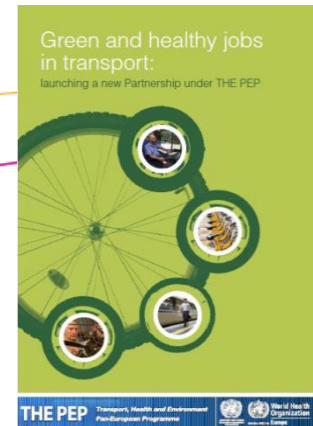
EUROPEAN CITIES AND REGIONS NETWORKING
FOR INNOVATIVE TRANSPORT SOLUTIONS

www.polisnetwork.eu

Polis Æ THE PEP Cooperation

THE PEP Æ Polis cooperation

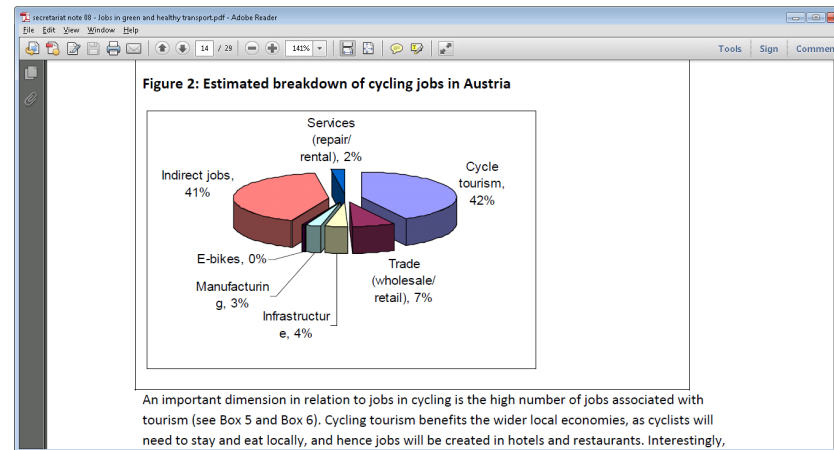
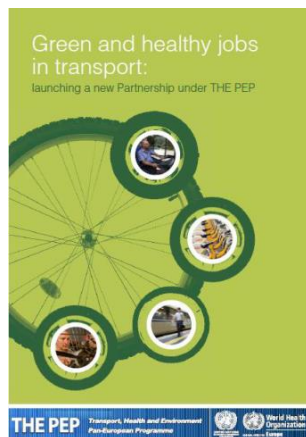
- Member of THE PEP Steering Committee & Extended Bureau
- Health Economic Assessment Tool: utilise, collect and share more examples heatwalkingcycling.org
- Green and Healthy Jobs from active travel, develop more
- Presentations and best practice on how cities are improving health and air quality through active mobility
- Joint policy, advocacy and lobbying: common message from local and ministerial levels. Position Paper.
- Funding bids



Polis È THE PEP Cooperation

THE PEP È Polis cooperation

- Green and Health Jobs research
- Add new dimension to business cases
- Scope for greater evidencing



Polis È THE PEP Cooperation



- **THE PEP Fourth High Level Meeting @ Transport Research Arena TRA Paris 14-16 April 2014**
 - Sets THE PEP objectives and work plan for 2014-2020
 - Contained in the *Paris Declaration* which Polis has contributed to:
 - » ...+the development of new and stronger partnerships with city networks ò +
 - » Priority Goal 5: to integrate transport, health and environmental objectives into urban and spatial planning policies

Polis È THE PEP Cooperation



- **Paris Declaration**

- **Priority Goal 5: to integrate transport, health and environmental objectives into urban and spatial planning policies**
- by adapting urban environments and mobility[transport] systems to prepare for demographic and environmental change, [including extreme weather events], and by developing integrated urban and spatial planning frameworks that reduce the impacts of transport on people and the environment and support green, resilient and health-friendly urban and suburban mobility and sustainable livelihoods.

Polis È THE PEP Cooperation



- **Polis - THE PEP side event at Transport Research Arena TRA Paris 14-15 April 2014**

- Bringing Polis local authorities and others together including ministries
- Broad platform to deliver our common message on Transport and Health
- Exploit new dissemination channels
- Attract new stakeholders

- **Participation in THE PEP Extended Bureau**

- Polis has engaged with EB in presenting local level best practice
- Agreement adopted November 2013

Polis È THE PEP Cooperation

Informal document no. 13
THE PEP Steering Committee, 11th session, 27-28 November 2013
Collaboration with Polis

ECONOMIC COMMISSION FOR EUROPE | **WORLD HEALTH ORGANIZATION**
REGIONAL OFFICE FOR EUROPE

HIGH-LEVEL MEETING ON TRANSPORT,
HEALTH AND ENVIRONMENT

Steering Committee of the Transport, Health and
Environment Pan-European Programme
Eleventh session
Geneva, 27-28 November 2013
Item 8(e) of the provisional agenda
Managing THE PEP

Strengthening synergies with international organizations and processes

Collaboration with Polis

1. Polis¹ is a network of European cities and regions working together to develop innovative technologies and policies for local transport. Since 1989, European local and regional authorities have been working together within Polis to promote sustainable mobility through the deployment of innovative transport solutions. Their aim is to improve local transport through integrated strategies that address the economic, social and environmental dimensions of transport.

Page: 1 of 2 Words: 852

Polis È THE PEP Cooperation

- **Polis - THE PEP Cooperation 2014 onwards**
 - Many areas of mutual interest
 - Agreement in place between two bodies to continue and formalise our joint working
 - Continue to develop and deliver common message at local, national and EU levels
 - Strategic development of policy
 - Tools, research and case studies
 - Polis WG on Transport and Health will lead on these actions

Polis È THE PEP Cooperation



Paul Curtis

London European Partnership for Transport

paul.curtis@lept-eu.org